

# Micro-CT study of Middle Ordovician *Spumellaria* (radiolarians) from western Newfoundland, Canada

Sarah Kachovich<sup>1,2</sup>  and Jonathan C. Aitchison<sup>2</sup>

<sup>1</sup>International Ocean Discovery Program, Texas A&M University, College Station, TX, 77845 <[kachovich@iodp.tamu.edu](mailto:kachovich@iodp.tamu.edu)>

<sup>2</sup>School of Earth and Environmental Sciences, The University of Queensland, Brisbane, QLD, 4072 <[jona@uq.edu.au](mailto:jona@uq.edu.au)>

---

**Abstract.**—A new, previously undescribed Middle Ordovician (middle Darriwilian: Dw2) radiolarian assemblage has been recovered from the Table Cove Formation at Piccadilly Quarry, western Newfoundland. Constituents of the fauna described herein are both distinctive and exceptionally well preserved. Three-dimensional X-ray micro-computed tomography ( $\mu$ -CT) is used to make a detailed examination of four key spumellarian specimens. This technology enables visualization of hitherto ambiguous details of the internal morphologies of key lower Paleozoic taxonomic groups, among which a lack of knowledge has impeded resolution of higher taxonomic rankings.

---

## Introduction

Radiolarian faunas have been reported from Ordovician strata globally from North America, Spitsbergen, Scotland, Russia, and China (see Danelian et al., 2017 and references therein). However, the biostratigraphic potential of this fossil group remains underdeveloped. Many gaps in knowledge and understanding of phylogenetic relationships exist due to the lack of precise taxonomic descriptions of many taxa (Noble et al., 2017). This is largely a result of difficulties experienced in examining details of internal structures, many of which are obscured by diagenesis and/or poor preservation. Moreover, the stratigraphic and paleogeographic ranges of many important morphological groups are poorly constrained because they are largely only reported from isolated occurrences commonly with uncertain stratigraphic assignment (Aitchison et al., 2017).

Western Newfoundland was chosen for this study because earlier investigations in lower Paleozoic rocks in this area have yielded numerous well-preserved radiolarian faunas from upper Cambrian to Lower Ordovician strata (Bergström, 1979; Aitchison et al., 1998; Zhang and Pratt, 2000; Won and Iams, 2002, 2011, 2013, 2015; Won et al., 2005; Maletz, 2007; Maletz and Bruton, 2007; Pouille et al., 2013). Previous work in the Middle Ordovician Table Head Formation also indicated the presence of radiolarians (Renz, 1990; Bergström, 1979; Zhang and Pratt, 2000; Maletz and Bruton, 2007) at Piccadilly Quarry, a well-known fossil locality. Thirty-nine species, eight of which are described herein, were recognized in our investigation.

The remarkable preservation of the fauna provided us with the opportunity to examine this entirely new assemblage with the aid of  $\mu$ -CT. All of the thirteen samples collected yielded useful radiolarians. However, the interiors of many of the spherical forms were commonly in-filled with calcite and pyrite and/or the delicate internal structures were missing. Therefore, an

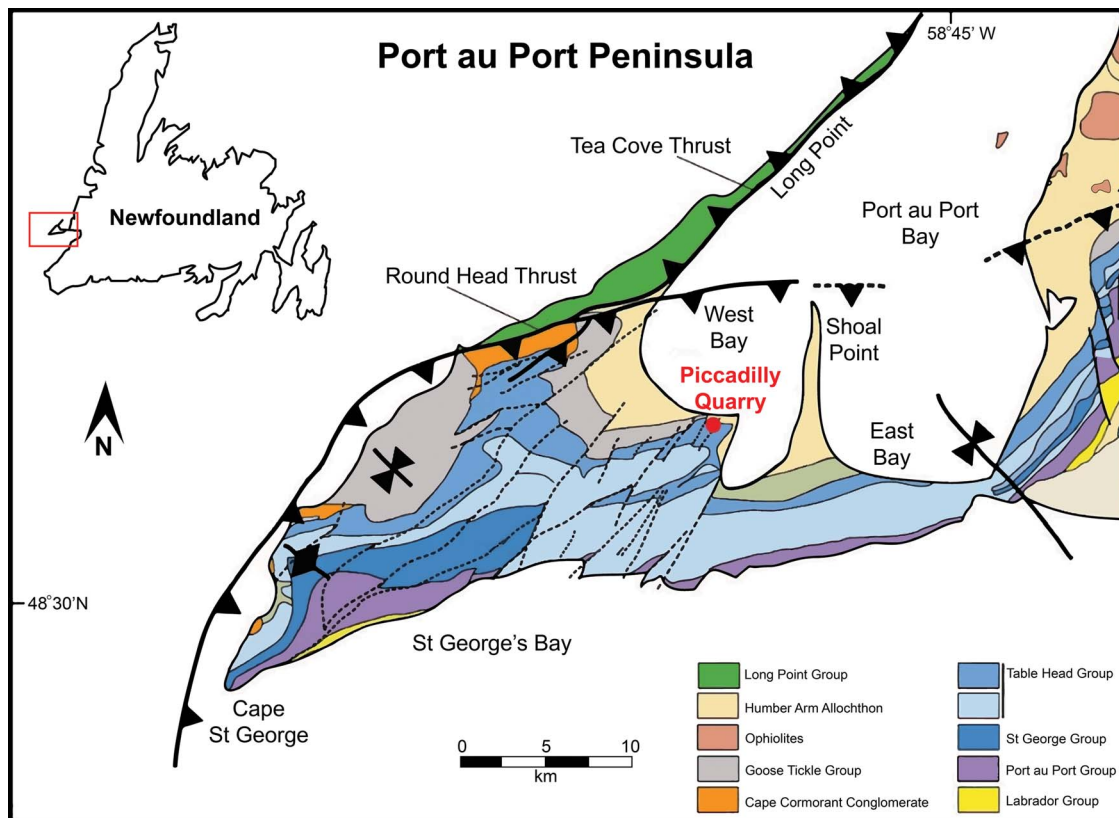
initial detailed investigation with the scanning electron microscope (SEM) and transmitted light microscope (TLM) was undertaken in order to identify and select the most promising specimens for  $\mu$ -CT imaging.

## Stratigraphic setting

Sedimentary sequences of western Newfoundland accumulated on a carbonate platform situated on a passive continental margin of an early Paleozoic microplate. It now incorporates the most north-east margin of the Appalachian Mountains that run through the North American continent. The Table Head Group of the Port au Port Peninsula area is well studied (Stenzel et al., 1990) and incorporates carbonate platform sediments of the Middle Ordovician Table Cove Formation.

*Locality information.*—Thirteen samples were systematically collected from dark gray nodules interstratified in a four-meter-thick section of fossiliferous, peloidal limestone of the Table Cove Formation, at the Piccadilly Quarry (also called West Bay Centre Quarry), Port au Port Peninsula, western Newfoundland (Fig. 1; 48°35'29.6"N 58°55'13.1"W WGS84). The Table Cove Formation was deposited in a slope-to-basin environment (Zhang and Pratt, 2000) and consists primarily of dark gray, thin-bedded argillaceous lime-mudstones interbedded with black calcareous shales (Stenzel et al., 1990). The limestone has a predominance of pelagic organisms where radiolarians commonly can be observed in abundance with a hand lens.

Samples yielded a diverse co-occurring assemblage of hexactinellid sponge spicules, conodonts, and rare lingulate organophosphatic brachiopods. A middle Darriwilian (late Dw2) age was established for the entire section (samples PD01 and PD13) based on the presence of several conodonts. Relevant zonal index species include pectiniform taxa such as



**Figure 1.** Locality map showing position of study area (after Cooper et al., 2001). Inset map shows Port au Port Peninsula's location in relation to Newfoundland.

*Histiodella kristinae* Stouge, 1984 and the genus *Polonodus* (Fig. 2). *Histiodella kristinae* has its first occurrence in the uppermost *Eoplacognathus pseudoplanus* Conodont Zone and allows regional correlation with the *Histiodella kristinae* sub-zone in western Newfoundland (late Dw2) (Stouge, 1984).

A middle Darriwilian assignment correlates with the *Holmograpthus spinosus* graptolite biozone tentatively assigned by Maletz and Egenhoff (2011) for the Table Cove Formation at this exposure. This is also supported by assignment to the graptolite *Nicholsonograptus fasciculatus* biozone for the overlying Black Cove Formation (Figs. 3, 4; Morris and Kay, 1966; Finney and Skevington, 1979; Williams et al., 1987; Maletz and Egenhoff, 2011).

**Radiolarian biostratigraphy.**—Although some intervals in the Ordovician have not yet provided useful radiolarian faunas, 12 assemblages are presently recognized (Aitchison et al., 2017) (Fig. 5). The Ordovician stratigraphy used herein follows North American and western Newfoundland zonal schemes for conodonts and graptolites. Middle Ordovician radiolarian stratigraphy follows the work of Nazarov and Popov (1980), Nazarov (1988), Danelian and Popov (2003), Jones and Noble (2006), MacDonald (2006), Pouille et al. (2013), and Aitchison et al. (2017). Key references used in construction of Figure 4, in addition to those mentioned in the text, are Maletz (2009) and Feltes et al. (2016).

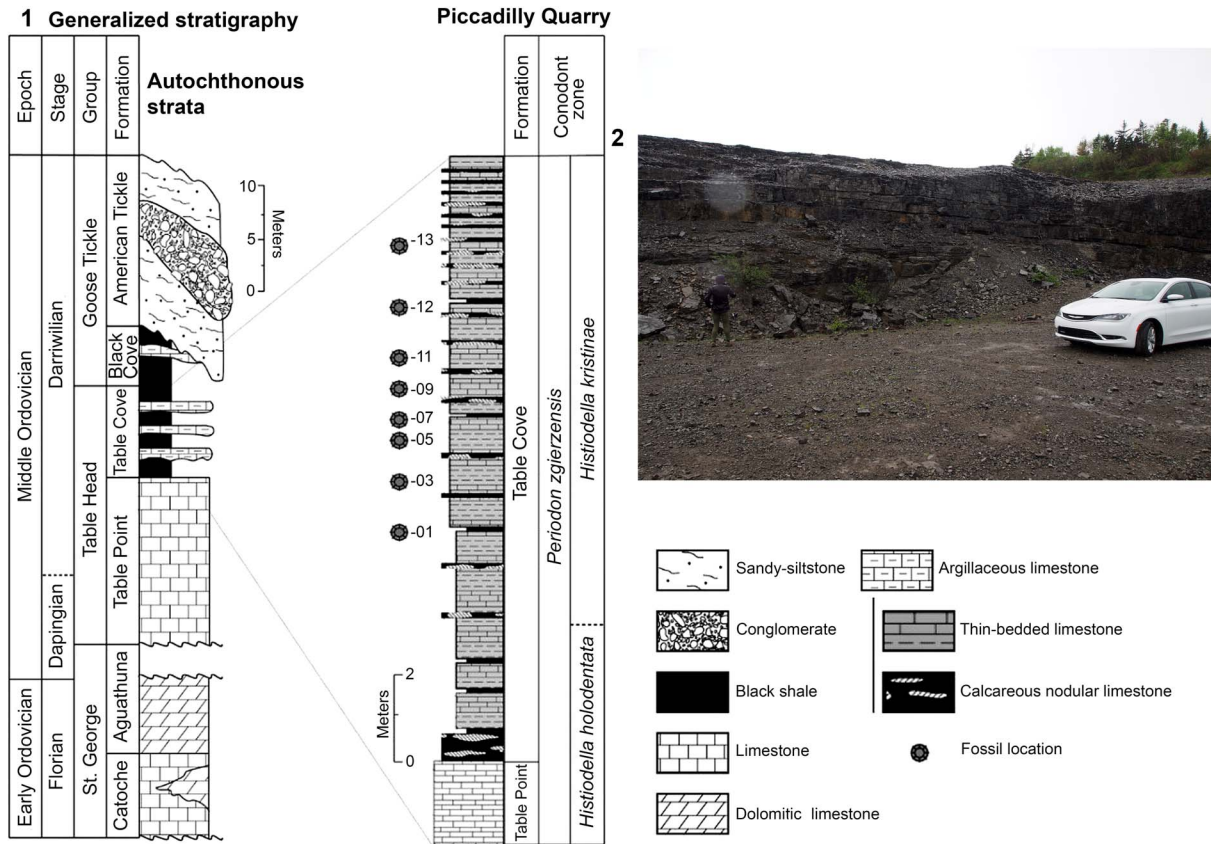
Correlations using graptolite data indicate that the material collected for this study comes from within the interval between the *Proventocitum procerulum* and *Haplentactinia*

*juncta-Inanigutta unica* radiolarian assemblages. This is an interval from which well-preserved Middle Ordovician radiolarian assemblages have also been reported from Kazakhstan (Nazarov et al., 1975, 1977; Nazarov and Popov, 1980; Nazarov, 1988; Nazarov and Ormiston, 1993; Danelian and Popov, 2003; Pouille et al., 2013, 2014). The *Haplentactinia juncta-Inanigutta unica* assemblage from the radiolarian-bearing Sample 19, reported by Nazarov and Popov (1980) from the North-Balkhash Region, Kazakhstan is the closest known assemblage in age, faunal composition and lithology. Nazarov and Popov's (1980) material comes from bedded argillaceous limestones situated at the lower part of the Kurchilik Formation (Apollonov et al., 1990; Dubinina, 2000). Although they provided a detailed description of the fauna, many taxonomic details require revision.

## Materials and methods

All samples were processed with 10% acetic acid for two months to free specimens. Once specimens were isolated from the matrix they were then sieved through a 250  $\mu$ m sieve and collected at the 63  $\mu$ m sieve. Residues were hand-picked for initial investigation with both SEM and TLM where relative abundance was calculated either at the species, genus, or family level depending on the difficulty of identification or state of preservation. Specimens were imaged using a Hitachi TM3030 desktop SEM at the Research Laboratory of the School of Earth and Environmental Sciences. A lower accelerating voltage (5 kV) was chosen for the secondary





**Figure 3.** Stratigraphic context of the Table Cove Formation at the Piccadilly Quarry: (1) lithostratigraphic log after Maletz and Egenhoff (2011) showing the sampled levels (PD01, -03, -05, -07, -09, -11, -12, and -13). Generalized stratigraphy after Knight (1991) and James et al. (1987); (2) field photo, facing southwest, of the exposure of gently dipping beds of rhythmically bedded limestone.

electron beam because uncoated samples were susceptible to charging. Specimens selected for  $\mu$ -CT imaging were transferred into a labeled micropaleontological slide for storage before sample preparation.

**Micro-CT imagery and analysis.**—Micro-CT images of selected radiolarians were obtained using the Xradia Versa 500 scanner at the University of Queensland Julius Kruttschnitt Mineral Research Centre. Details of the methodology employed are presented in Kachovich et al. (2019). A multiple specimen mount was used to minimize the opening of the chamber, thus minimizing the effect of thermal flux. Acrylonitrile butadiene styrene (ABS) plastic for 3D printing was selected for specimen mounting because of its low density (1.07 g/cm<sup>3</sup>) compared to radiolarian skeletons (~2.65 g/cm<sup>3</sup>). Ultraviolet (UV) curing resin NOA61 (1.231 g/cm<sup>3</sup>) was selected for its low density and ability to allow enough time for mount preparation and sample transferring.

The specimens were scanned with an X-ray source current of 77  $\mu$ A and beam voltage of 60 kV for four hours each. High

attenuation differences are needed to achieve radiographs with adequate phase contrast. Stacks of 970 images with 0.42  $\mu$ m resolution were reconstructed for each specimen. The acquired 3D data set was processed with volume reconstruction software built in the Xradia 500 scanner and exported as 32-bits stacks. Data were saved as grayscale TIFF images, which were then imported into Avizo® 9.4 software for 3D visualization and data analysis.

**Repository and institutional abbreviations.**—Specimens examined in this study are deposited in The University of Queensland (UQ), Brisbane, Australia. Other repositories include Muséum national d’Histoire naturelle (MNHN), Lille University of Science and Technology (USTL), and Geological Survey of Canada (GSC).

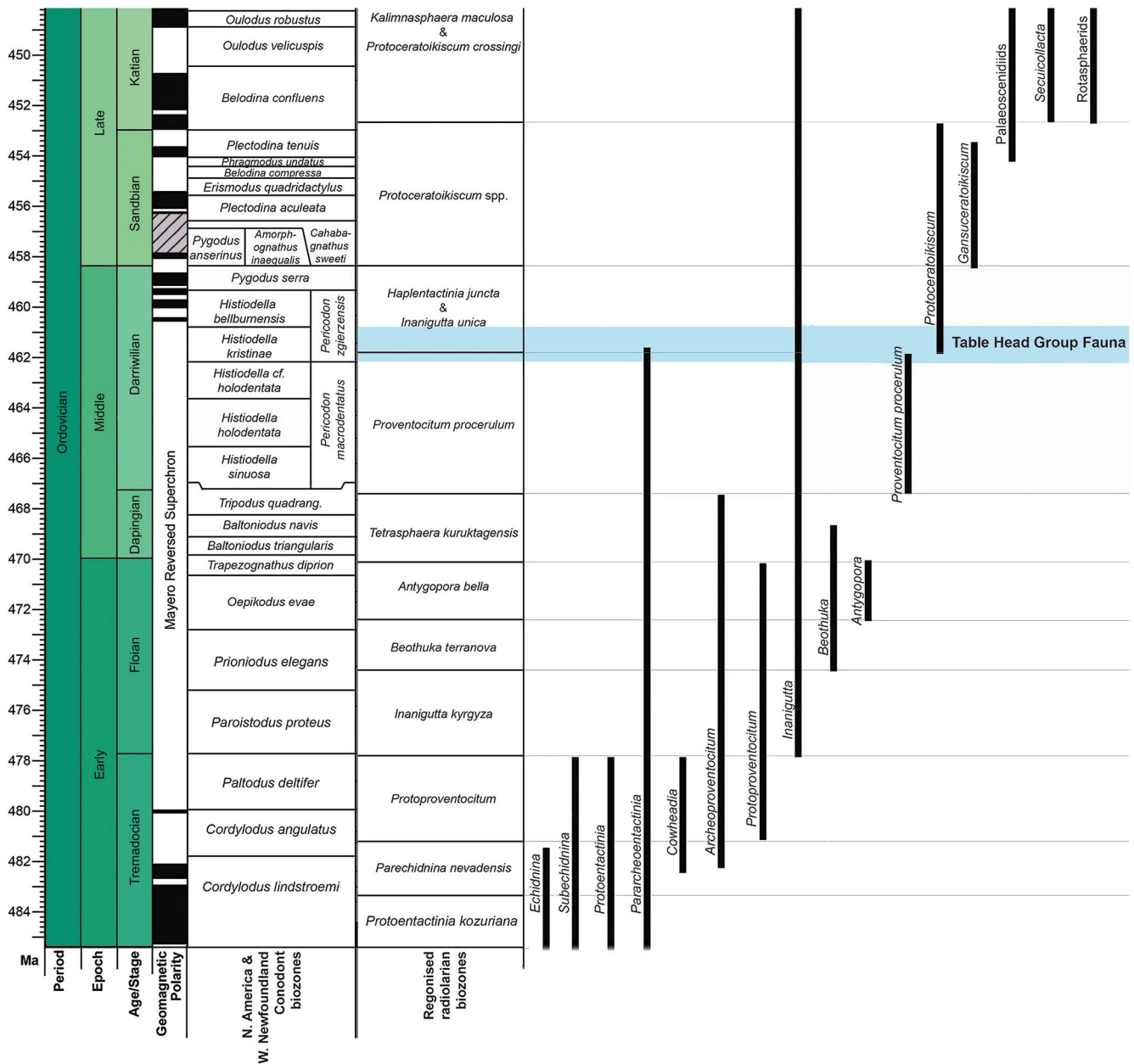
**Systematic paleontology**

Phylum Radiozoa Cavalier-Smith, 1987

Class Polycystina Ehrenberg, 1838, sensu Riedel, 1967

Order Spumellaria, Ehrenberg, 1875, sensu De Wever et al., 2001

**Figure 2.** Composite figure of scanning electron micrographs of the diverse assemblages of age-diagnostic conodonts, which were used for determining stratigraphic assignment. Scale bar: 100  $\mu$ m: (1, 2, 17, 21) *Paroistodus horridus* (Barnes and Poplavski, 1973) (PD13): (3–5, 11) *Protopanderodus cooperi* (Sweet and Bergström, 1962) (PD13): (6, 8) *Drepanodus reclinator* (Lindström, 1955) (PD05, PD10, respectively): (7, 9) *Parapanderodus elegans* Stouge, 1984 (PD13): (10) *Drepanoistodus costatus* (Abaimova, 1971): (12, 13) *Panderodus gracilis* (Branson and Mehl, 1933) (PD13): (14–16, 18) *Histiodella kristinae* Stouge, 1984 (15, 18 PD13; 16 PD05; 17 PD13): (19) *Polonodus* sp. (PD13): (20, 22) *Periodon macrodentatus* (Graves and Ellison, 1941) (PD13).



**Figure 4.** Ordovician radiolarian zonation, after Aitchison et al. (2017). The *Histioidella kristinae* subzone recognized in Samples PD01–PD13 is highlighted in blue.

*Remarks.*—Polycystines with radial arrangement of numerous spines with a distinct internal microsphere and without an internal spicular system. Spumellarians described herein are characterized by the presence of a small microsphere with a variable number of outer spheres. All spheres are connected to the microsphere by a variable number of outer spines.

Family Inaniguttidae Nazarov and Ormiston, 1984, sensu Noble, 1994, sensu Danelian and Popov, 2003

*Remarks.*—Identification to genus level within this family requires observation of the number and sizes of internal spheres in conjunction with an accurate assessment of the number of spines. Several genera are recognized based on the

number of spheres, spines, and the presence or absence of a pylome and a microsphere (Noble et al., 2017). These genera include: *Inanibigutta*, *Inanigutta*, *Inanihella*, *Oriundogutta*, *Plussatispila*, and *Triplococcus* (Caridroit et al., 2017).

Genus *Triplococcus* Danelian and Popov, 2003

*Type species.*—*Triplococcus acanthicus* Danelian and Popov, 2003, from siliceous limestone of the Akzhal Formation, southern Betpak-Dala desert, Kazakhstan, by original designation.

*Occurrence.*—Ordovician, upper Dapingian? to upper Darrivilian from Kazakhstan, China, Argentina, and

Taxa list		Histiodelia kristinae subzone												
		Table Cove Fm. Piccadilly Quarry, western Newfoundland												
		Sample number												
Family	Taxa	-01	-02	-03	-04	-05	-06	-07	-08	-09	-10	-11	-12	-13
Archeoentactiniidae	<i>Pararchoentactinia reedae</i> Won, 2002									1				
	<i>Sphaeroentactinia robusta</i> Won and Iams, 2015					3								1
	<i>Sphaeroentactinia</i> sp. aff. <i>S. integrata</i> Maletz and Bruton, 2007					4								10
	<i>Sphaeroentactinia</i> sp.					2								
Echidniniidae	<i>Echidnina</i> sp. cf. <i>E. conexa</i> Won, Iams and Reed, 2005		1											
Entactiniidae	<i>Provisocyntra</i> sp. A		10			19								31
	<i>Provisocyntra</i> sp. B		10			11				10				27
	<i>Spongentactinia</i> sp.					10				10				11
	<i>Spongentactinia armillata</i> (Fortey and Holdsworth, 1971)					2				10				11
	<i>Entactiniid</i> gen. et sp. indent.		2							1				
Haplentactiniidae	<i>Haplentactinia</i> sp.													3
Haplotaeniidae	<i>Haplotaeniatum</i> sp. cf. <i>H. vertigospongum</i> (Jones and Noble, 2006)		2			10				6				3
	<i>Haplotaeniatum</i> sp.													10
	<i>Syntagentactinia biocculosa</i> Nazarov, 1980					1								1
Inaniguttidae	<i>Inanibigutta</i> sp. A		1			1								3
	<i>Triplococcus acanthicus</i> Danelian and Popov, 2003	30	30	32	35	40	30	28	30	36		30	30	3
	<i>Triplococcus</i> sp. aff. <i>T. acanthicus</i> Danelian and Popov, 2003					10							15	3
	<i>Triplococcus aksuranesis</i> gr. Pouille and Danelian, 2013		12			9				8				50
	<i>Plussatispila</i> sp. cf. <i>P. cornwallisensis</i> MacDonald, 2006		3			6								10
Proventocitidae	<i>Archeoproventocitum nudifirmum</i> Won, Iams and Reed, 2007													1
	<i>Neopalaeospiculum</i> sp.		33	8		42		10	12	45		7	9	22
	<i>Palaeospiculum multifurcatum</i> Won, Iams and Reed, 2005		4							1				
	<i>Ramuspiculum</i> sp.		2			4								1
	<i>Svalbardospiculum</i> sp. aff. <i>S. hexaradiatum</i> (Won and Iams, 2002)					3								2
	<i>Palaeospiculid</i> gen. et sp. indent.		1											
Protoentactiniidae	<i>Protoentactinia</i> sp.					2								
	<i>Varispiculum ectospiculatum</i> Won and Iams, 2015													2
Pylentonemidae	<i>Pylentonemids</i> gen. et sp. indent.													1
Incertae Sedis	<i>Aspiculum</i> sp.													8
	<i>Nyfrieslandia</i> sp. aff. <i>N. complicata</i> Maletz and Bruton 2007					8								10
	<i>Nyfrieslandia</i> sp.					2				6				14
	<i>Westernbrookkia</i> sp.													7

Figure 5. Faunal diversity. List of radiolarian taxa recovered from Piccadilly Quarry samples with the number of specimens indicating relative abundance of different species.

Newfoundland (Danelian and Popov, 2003; Maletz et al., 2009; Pouille et al., 2013, 2014; herein).

Remarks.—*Triplococcus* can be distinguished from other inaniguttids chiefly by the greater number of closely spaced spheres. Pouille et al. (2013, p. 1144–1145) commented that *Triplococcus* is an inaniguttid “composed of three (possibly four) shells placed around a small microsphere from which originate five to twelve outer spines. The latter emerge from the bars of the microsphere as thin spines, becoming thicker rod-like spines from the median shell (second after the microsphere) onwards. Inner and median shells are rather closely spaced. The microsphere and inner shell’s wall structure consists of a thin layer, pierced irregularly, whereas the median and outer shells are regularly perforated. Numerous beams originate either from the surface of the inner shell or from the median shell. Outer spines may bear some apophyses indicating the possible presence of a fourth shell.”

Four specimens assignable to this genus were analyzed using  $\mu$ -CT. A small “primitive” pylome is commonly developed within each genus. Detailed observation of sphere walls revealed thin, bandage-like layers of silica (the term bandage is applied to refer to flat layers on the sphere wall that is made of perforations, sensu Maletz and Bruton, 2007), in contrast to rounded bars typical of many radiolarians. These coalesce into

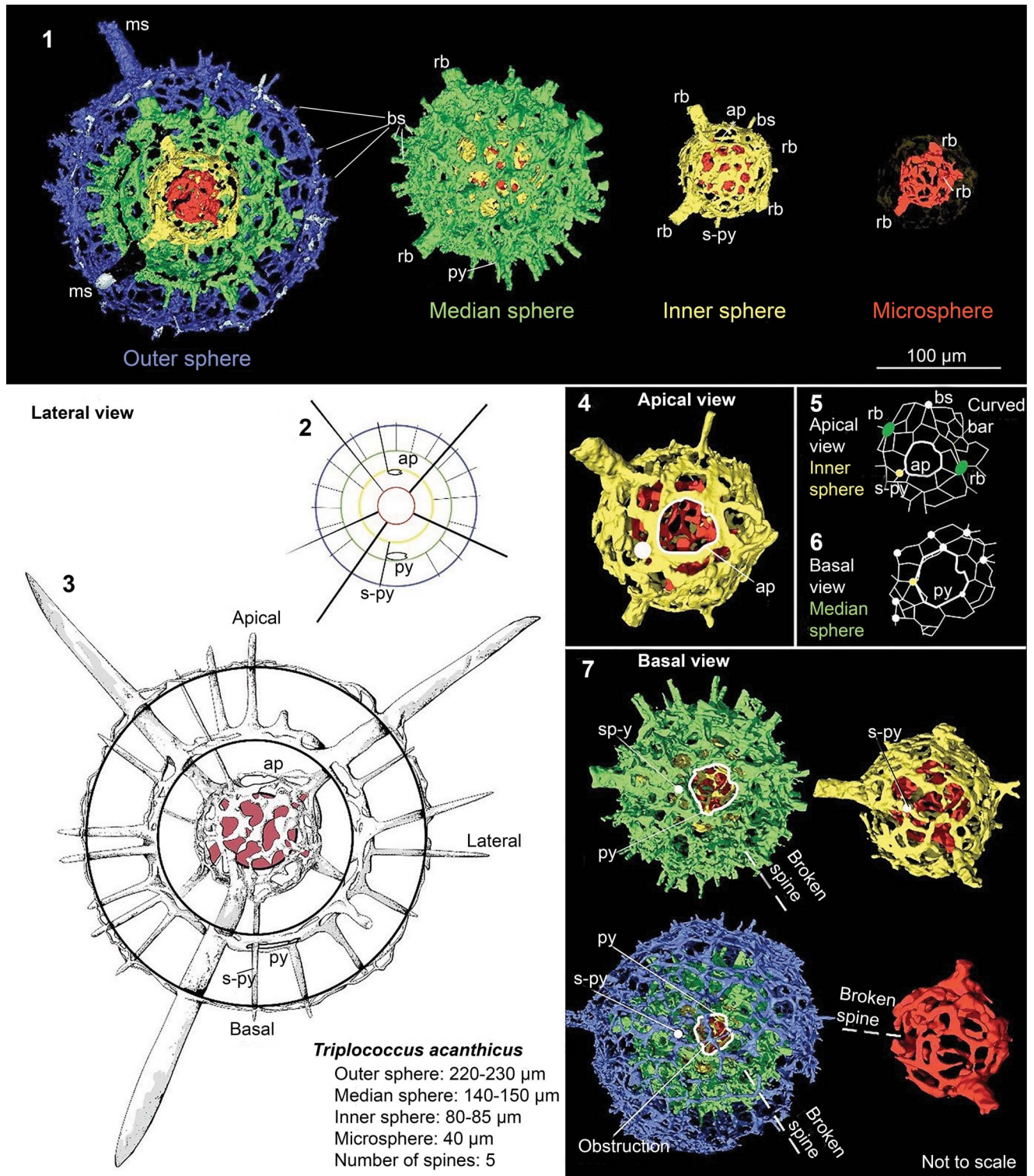
a thin spherical layer with irregular pores that pierce the surface. On complete specimens, the median sphere regularly develops high ridges between pore junctions, forming a hexagonal pattern on top of the primary bandage (Fig. 6.7). *Triplococcus* therefore can be distinguished easily from most multi-sphered inaniguttids by the thin bandages constructed on the inner spheres rather than a series of interconnected bars with a rounded cross-section. This unusual skeletal development has also been observed in the Lower Ordovician genus *Antygotopora* (Maletz and Bruton, 2007). The main difference between the skeletal wall of *Antygotopora* and *Triplococcus* is that in *Antygotopora* the bandages are very wide (~18  $\mu$ m) and the small pores (~9  $\mu$ m) have raised rims.

*Triplococcus acanthicus* Danelian and Popov, 2003  
 Figures 6, 7.6, 7.10, 7.13–18

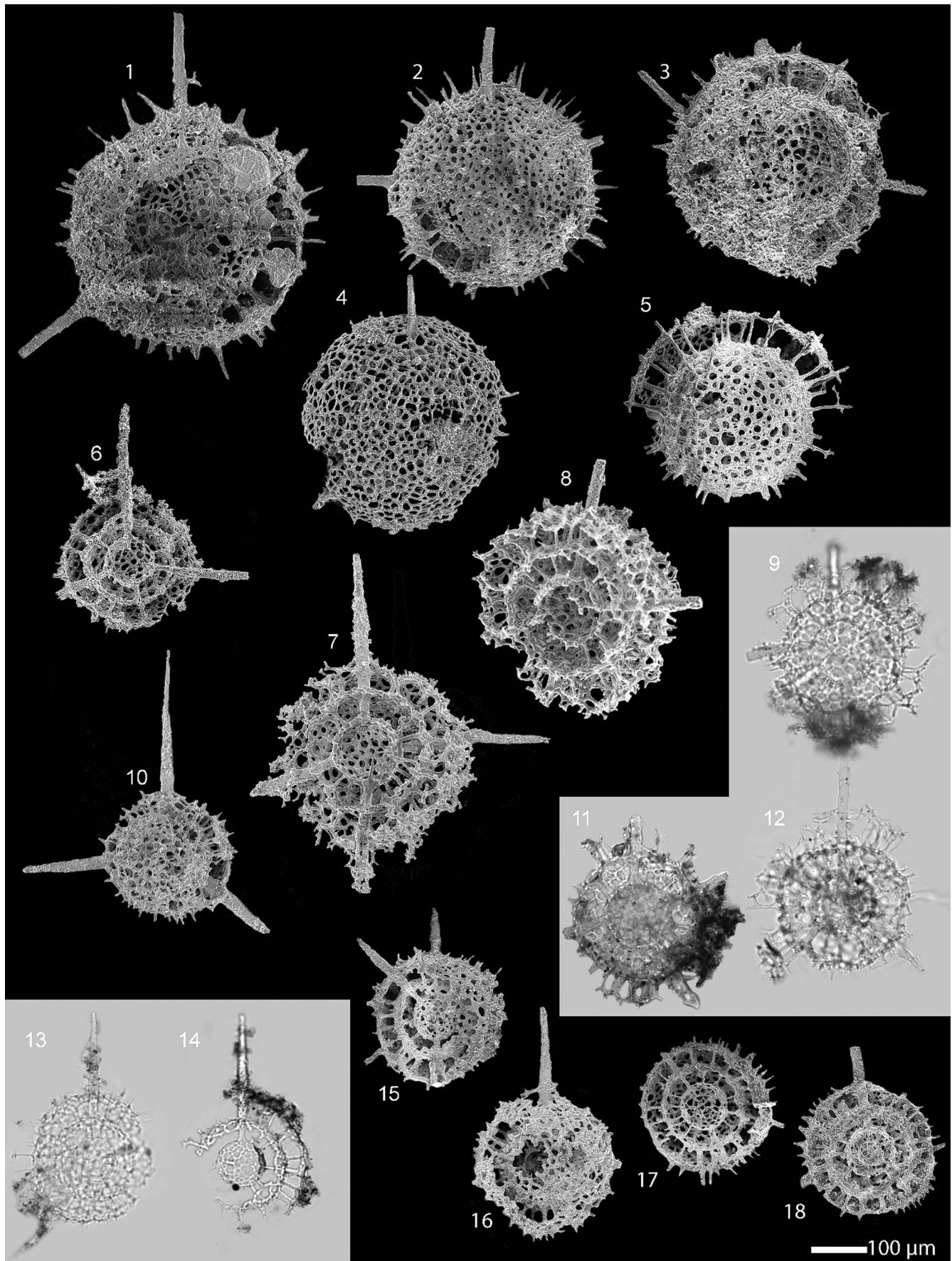
2003 *Triplococcus acanthicus* Danelian and Popov, p. 333, figs. 5g–5m, 6a–6c.

2015 *Triplococcus acanthicus*; Zong et al., figs. 4.12–4.15, 4.18.

Holotype.—Specimen (MNHN F62107) from the Akzhal Formation, southern Betpak-Dala desert, Kazakhstan (Danelian and Popov, 2003, fig. 5h).



**Figure 6.** *Triplococcus acanthicus* Danelian and Popov. A compilation of line drawings and  $\mu$ -CT models illustrating a heteropolar skeleton of radial symmetry originating from a structurally stable microsphere: (1) three spheres and a microsphere digitally segmented for individual observation. Outer sphere is also sliced in half in order to demonstrate the relationship between spheres and spines. Each segment is shown at the same scale; (2) diagram showing the configuration of spheres, spines, ap, py, and by-spine related to the s-py; (3) detailed diagram showing the true relationship between features; (4) apical view of the apical pore on the inner sphere. Planar extraction of the apical (5) view of the inner sphere and basal (6) view of the median sphere; (7) basal view of the primitive pylome on the median sphere and its relationship with the other spheres and microsphere. Apical pore (ap), pylome (py), by-spine (bs), by-spine related to the pylome (s-py), radial bar (rb), microsphere (ms).





*Emended diagnosis.*—Skeleton consisting of three encapsulated and perforated spheres, five main spines that traverse all spheres to join at a small microsphere. Numerous by-spines commonly originate from the inner sphere. The shape of external and internal spheres is almost perfectly spherical with a radial body plan. Main spines project outside the external sphere in the form of robust rod-like spines that taper only slightly distally. Variability in the origin of the by-spines at the external surface of the median sphere and occasionally the innermost sphere. Their projection outside the external sphere tapers relatively rapidly distally. The abundance of by-spines commonly increases from the external surface of the inner sphere to the median sphere, with the majority of by-spines present on the outer sphere.

*Occurrence.*—Ordovician, upper Dapingian? of the Akzhal Mountains, Balkhash Region, Kazakhstan (Danelian and Popov, 2003); China (Zong et al., 2015); middle Darrivilian from the Table Cove Formation, western Newfoundland (herein).

*Description.*—Skeleton consisting of three almost perfect spheres and a microsphere: outer sphere  $\text{\O}$ : 216–230  $\mu\text{m}$ ; well-defined median sphere  $\text{\O}$ : 140–152  $\mu\text{m}$ ; inner sphere  $\text{\O}$ : 80–85  $\mu\text{m}$ ; microsphere  $\text{\O}$ : 40  $\mu\text{m}$  ( $\text{\O}$  denotes the diameter of the sphere). Each sphere is typically thin, with irregular pore framework. Clear development of a fragile microsphere (rarely preserved on many specimens) was observed in a  $\mu\text{-CT}$  scan (M1S03; Fig. 6) and a few SEM images (Fig. 7.18, 7.19). No variation in size of the microsphere was observed. The microsphere consists of narrow bandages that form a thin sphere with irregular oval perforated pores. The inner sphere is also made of narrow bandages that are thickest close to an apical pore (apical pore  $\text{\O}$ : 38  $\mu\text{m}$ ; bandages: 6–12  $\mu\text{m}$  wide and  $\sim$ 1–2  $\mu\text{m}$  thick). Towards the basal region, bandages are 2.72–7.63  $\mu\text{m}$  wide and  $<$ 1  $\mu\text{m}$  thick. The pores have a diameter of 9–49  $\mu\text{m}$ ; average 11.8  $\mu\text{m}$  on the inner sphere. Typically, pores are oval, but some elongated shapes are also common.

Five equally dispersed outer spines ( $\sim$ 220  $\mu\text{m}$  long), with their widest diameter at their junction with the external surface of the outer sphere, are present. The five main spines traverse all spheres to join to the five radial bars developed on the microsphere without support structures. There is no evidence that these spines continue into the microsphere. In the  $\mu\text{-CT}$  scan, one main radial ray was not preserved at the microsphere, but spines continue inside from the outer sphere, indicating the likelihood that it was formerly present. Numerous by-spines originate on the external surface of the median sphere and 12 out of 43 of these by-spines originate from the outer surface of the inner sphere. The by-spines are short (up to 23  $\mu\text{m}$ ) and taper relatively rapidly, distally.

The median sphere contains a small un-rimmed, primitive pylome ( $\text{\O}$ : 48  $\mu\text{m}$ ), which is obstructed by the outer sphere

(Fig. 6.5). Pore shape, size, and configuration vary, even across a single specimen. The surfaces of the bandages usually bear large (8  $\mu\text{m}$  high) ridges, which support the by-spines and connect the pore junctions. Variation in the nature of the median sphere wall was observed on the same specimen ranging from a hexagonal pattern with semi-regularly sized pores to a labyrinth of thin bandages with irregular pores.

An apical pore ( $\text{\O}$ : 39  $\mu\text{m}$ ) is developed between two radial bars on the inner sphere. It is located in the opposite location to the primitive pylome on the median sphere. The apical pore (Fig. 6.4) roughly mimics the shape and the size of the pylome opening, compared to its size on the median sphere. Two small by-spines are located around the apical pore on the inner sphere and the pylome on the median sphere. These by-spines both originate from the inner sphere. Pores that directly surround the apical pore are slightly larger ( $\text{\O}$ : 20–23  $\mu\text{m}$ ) than those on the rest of the inner sphere ( $\text{\O}$ : 12  $\mu\text{m}$ ). Therefore, the symmetry of *Triplococcus acanthicus* is radial, but heteropolar.

*Materials.*—Three hundred and fifty-four specimens identified from the Table Cove Formation, Piccadilly Quarry, western Newfoundland.

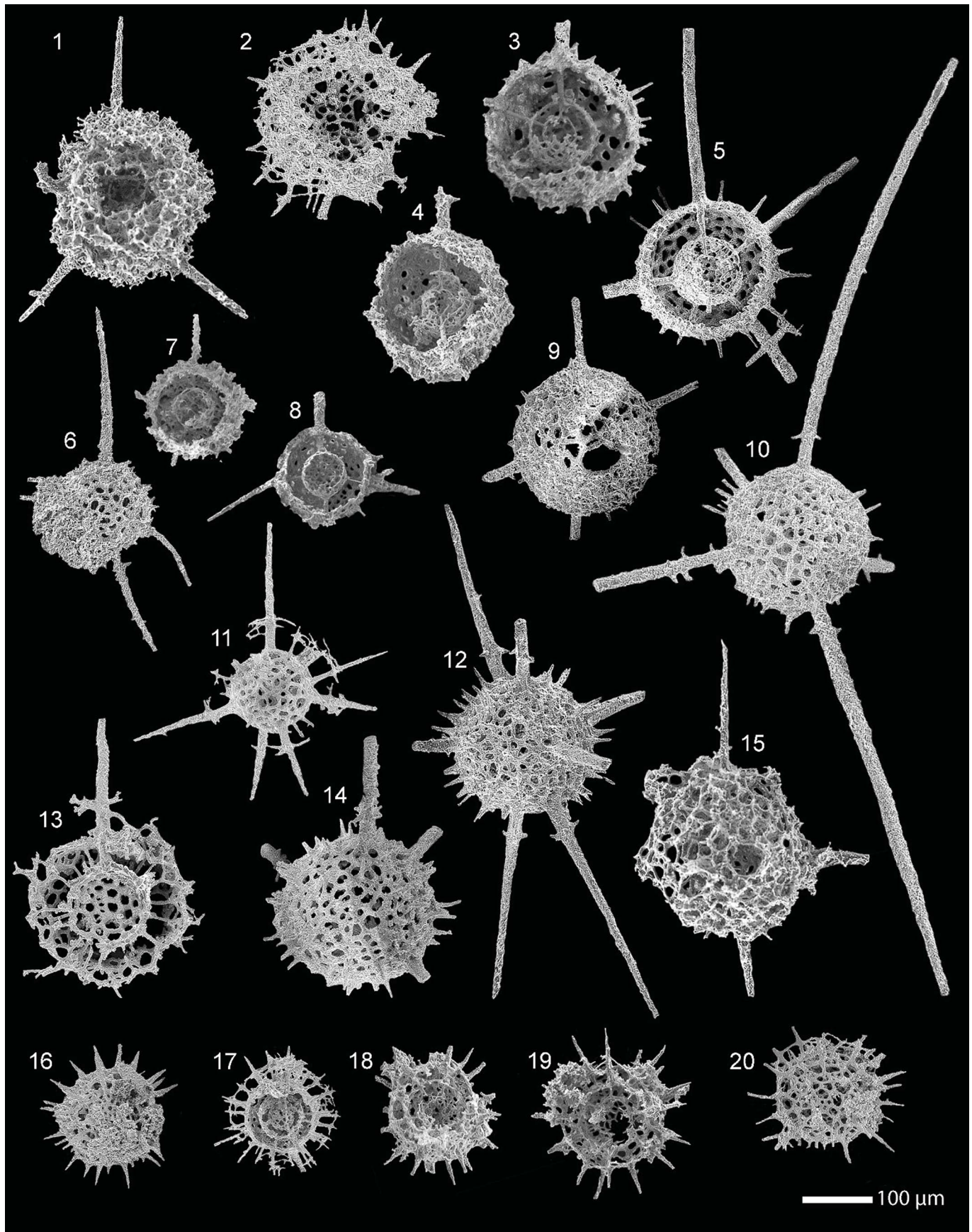
*Remarks.*—*Triplococcus acanthicus* is the smallest taxon assigned to the genus. It is also the most dominant taxon in all samples, comprising 36% of all radiolarian specimens. Although the microsphere was observed for the first time in this study, the structure of the inner sphere is considered to have greater taxonomic value. The polar nature of *T. acanthicus* is recognized for the first time due to the arrangement of spines, the presence of an apical pore on the inner sphere, and a pylome opening on the median sphere. Considerable variation is noted in the preservation of the skeleton among specimens, especially in wall thickness. The conspicuous hexagonal pattern at different ontogenic stages may cause confusion in taxonomy and reflects a distinct style of growth.

Danelian and Popov (2003) reported a slightly larger median sphere than that documented by Zong et al. (2015) or observed in our specimens (median sphere  $\text{\O}$ : 155–167  $\mu\text{m}$  in Danelian and Popov, 2003; 140  $\mu\text{m}$  in Zong et al., 2015; 140–152  $\mu\text{m}$  herein). The material in our study also exhibits less variation in the size of the outer sphere ( $\text{\O}$ : 216–230  $\mu\text{m}$  from 131 measured specimens) compared to the nine measured specimens reported by Danelian and Popov (2003; outer sphere  $\text{\O}$ : 214–257  $\mu\text{m}$ ).

*Triplococcus* sp. aff. *T. acanthicus* (Danelian and Popov, 2003)  
Figure 8.16–8.20

aff. 2003 *Triplococcus acanthicus* Danelian and Popov, p. 333, figs. 5g–m, 6a–c.  
aff. 2015 *Triplococcus acanthicus*; Zong et al., 2015, figs. 4.12–15, 4.18.

←  
**Figure 7.** Scanning electron and transmitted light micrographs of radiolarians extracted from the limestone at the Piccadilly Quarry, western Newfoundland, Canada. Scale bar = 100  $\mu\text{m}$ . (1–5) *Plussatispila* sp. cf. *P. cornwallisensis* MacDonald: (1–3, 5) from PD13; (4) from PD05; (7–9, 11, 12) comparison of the entactinarian, *Spongactinia armillata* (Fortey and Holdsworth, 1971) to show the external similarities with the spumellarians: (6, 10, 13–18) *Triplococcus acanthicus* Danelian and Popov from PD13.



**Occurrence.**—Middle Ordovician, middle Darriwilian from the Table Cove Formation, western Newfoundland (herein).

**Description.**—Small variant of *Triplococcus* with numerous thick by-spines where five of these spines originate at the external surface of the microsphere and the majority of the others originate at the inner sphere. By-spines are thickest between the median and outer sphere, then taper relatively rapidly distally. Some additional, thinner by-spines are also developed on the external surface of the median sphere. The shapes of external and internal spheres are slightly oblate, with a radial body plan. Sphere dimensions are similar to the median and inner sphere and microsphere of *T. acanthicus*: outer sphere  $\varnothing$ : 190–200  $\mu\text{m}$ ; median sphere  $\varnothing$ : 110–135  $\mu\text{m}$ ; inner sphere  $\varnothing$ : 75–80  $\mu\text{m}$ ; microsphere  $\varnothing$ : 45  $\mu\text{m}$ . Correlation between a smaller inner sphere ( $\varnothing$ : 75  $\mu\text{m}$  vs 80  $\mu\text{m}$ ) and longer by-spines (90  $\mu\text{m}$  vs 50  $\mu\text{m}$  long) is observed.

**Materials.**—Twenty-eight specimens identified from the Table Cove Formation, Piccadilly Quarry, western Newfoundland.

**Remarks.**—*Triplococcus* sp. aff. *T. acanthicus* lacks development of the five main spines that traverse all spheres, which is characteristic of *T. acanthicus*. However, five beams are developed on the microsphere, which is also seen in *T. acanthicus*. These beams do not develop into robust main spines, only into by-spines on the outer sphere. The five by-spines on the outer sphere that developed on the microsphere are indistinguishable from the numerous by-spines that develop on the inner sphere.

*Triplococcus aksuranensis* Pouille and Danelian in Pouille et al., 2013  
 Figures 8.3–8.5, 8.9, 8.10, 8.12, 8.15, 9

2013 *Triplococcus aksuranensis* Pouille and Danelian in Pouille et al., p. 1147, figs. 4.1–4.14, 6.2.  
 aff. 1975 *Pylentonema aperta* Nazarov, Popov, and Apollonov, p. 102, figs. 1, 2.  
 aff. 1988 *Cessipylorum apertum* Nazarov, p. 70, pl. 10, fig. 6.

**Holotype.**—Specimen (USTL1173/048) from the Shundy Formation, Balkhash Region, Kazakhstan (Pouille et al., 2013, fig. 4.3a).

**Occurrence.**—Middle Ordovician, upper Darriwilian of the Shundy Formation, Balkhash Region, Kazakhstan (Pouille et al., 2013); middle Darriwilian from the Table Cove Formation, western Newfoundland (herein).

**Description.**—Dimensions comparable to those of the holotype, *Triplococcus aksuranensis* Pouille and Danelian (Pouille et al.,

2013). Outer sphere  $\varnothing$ : 260–360  $\mu\text{m}$ ; median sphere  $\varnothing$ : 183–220  $\mu\text{m}$ ; inner sphere  $\varnothing$ : 90–110  $\mu\text{m}$ ; microsphere  $\varnothing$ : 50  $\mu\text{m}$ . The inner sphere and microsphere are typically thin and appear to be constructed of thin bandages producing irregular sub-circular, pores ( $\varnothing$ :  $\sim$ 10–25  $\mu\text{m}$ ). The median sphere is constructed from bandages with a thickened pore-frame, which is regularly perforated with numerous hexagonal to sub-circular pores ( $\varnothing$ : 5–20  $\mu\text{m}$ ). Occasionally a primitive pylome (20–25  $\mu\text{m}$ ) develops on the median sphere (Figs. 8.9, 8.15, 9). The rim of the pylome opening is fringed with a small ridge (5  $\mu\text{m}$  thick).

The outer sphere is thick and irregularly latticed with oval to angular-oval pores (more rarely rounded). The size of the pores is variable (9–30  $\mu\text{m}$ ). The microspheres and inner sphere are typically very thin and appear to be constructed by thin bandages producing irregular sub-circular, pores ( $\varnothing$ : 5–18  $\mu\text{m}$ ). A microspheres is commonly present, but is typically only partially preserved. Only relics of the outer sphere are preserved as apophyses in the Table Cove Formation material.

Six to eight outer spines originate from the microspheres, where six of the spines commonly develop into robust outer spines and the other two into long by-spines. Commonly, the robust main spines gradually thicken until the outer sphere, from which they can extend up to 590  $\mu\text{m}$  farther (average length 320  $\mu\text{m}$ ). Straight or curved rays may branch from the base of the outer spine and merge into the latticed outer sphere. Numerous short by-spines (up to 30  $\mu\text{m}$  long) originate from the pore-frame junctions of the median sphere and project where the outer sphere should be.

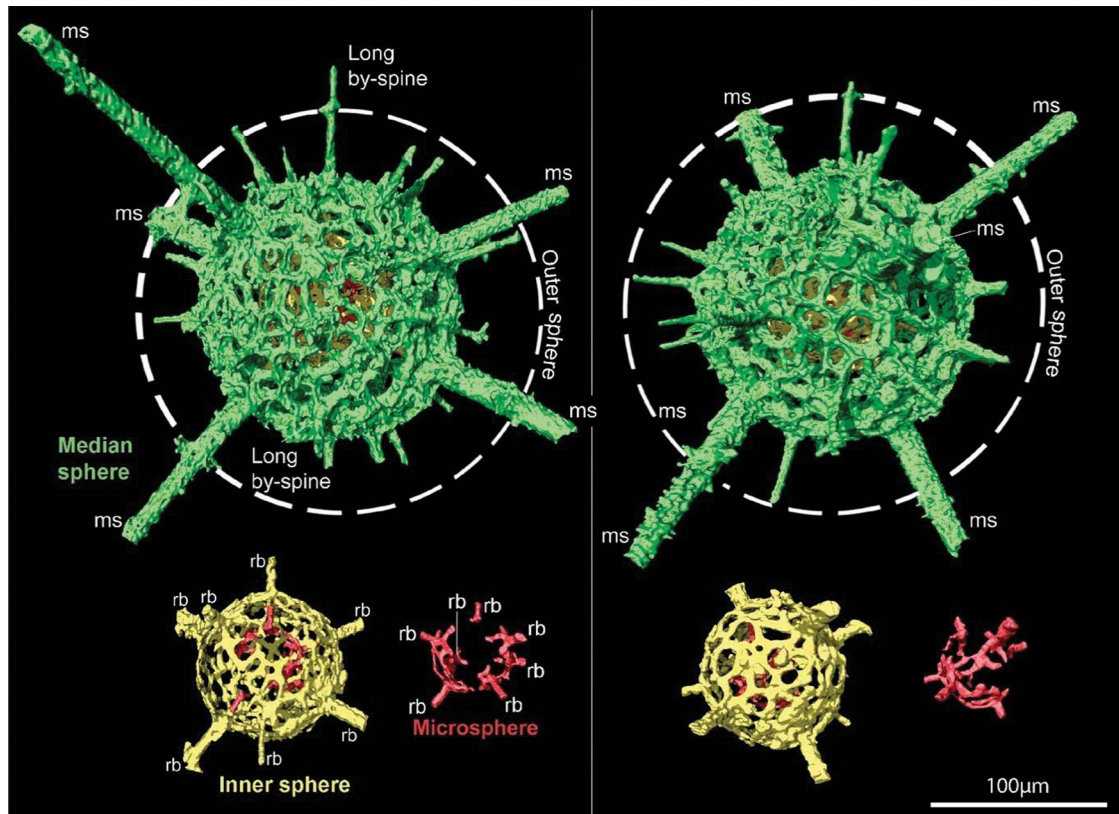
**Materials.**—Thirty-one specimens were identified, most likely in various stages of their ontogeny: two specimens from sample PD02, nine specimens from PD05, 10 specimens from sample PD09, and 10 specimens from sample PD13 from the Table Cove Formation, Piccadilly Quarry, western Newfoundland.

**Remarks.**—*Triplococcus aksuranensis* differs from *T. acanthicus* in its larger size (outer sphere  $\varnothing$ : 214–257  $\mu\text{m}$ ; median sphere  $\varnothing$ : 140–152  $\mu\text{m}$ ; inner sphere  $\varnothing$ : 80–85  $\mu\text{m}$  for *T. acanthicus*). *Triplococcus aksuranensis* has similar dimensions and structures to *Triplococcus akzhala* (Danelian and Popov, 2003) (median sphere  $\varnothing$ : 180–260  $\mu\text{m}$ ; inner sphere  $\varnothing$ : 90–100  $\mu\text{m}$  for *T. akzhala*). However, *T. akzhala* can be distinguished from *T. aksuranensis* by its ellipsoidal shape and greater number of outer spines (maximum 12 outer spines in *T. akzhala*, maximum eight outer spines in *T. aksuranensis*).

*Triplococcus aksuranensis* displays some morphological similarities with the *Inanigutta penrosei* group sensu Maletz and Bruton (2008) in the presence of two spheres and a microspheres. Juveniles or broken specimens of *T. aksuranensis* may also be confused with the genus *Inanihella*, which has a similar

**Figure 8.** Scanning electron micrographs of radiolarians extracted from the limestone at the Piccadilly Quarry, western Newfoundland, Canada. Scale bar = 100  $\mu\text{m}$ . (1) *Syntagactinia biocculosa* Nazarov, PD05; (2) *Haploaeniatum* sp. PD13; (3–5, 9, 10, 12, 15) *Triplococcus aksuranensis* Pouille and Danelian; (3–5, 10, 12) from PD13; (9, 15) from PD05; (6–8) *Inanigutta* sp. A.; (6, 8) from PD13; (7) from PD09; (11, 13, 14) comparison of broken specimens of the entactinarian, *Spongactinia armillata* (Nazarov), with the spumellarians to show the similarities of the inner shells, from PD13; (16–20) *Triplococcus* sp. aff. *T. acanthicus* (Danelian and Popov), PD13.





**Figure 9.**  $\mu$ -CT model of a digitally segmented *T. aksuranesis* from two orientations. The total length of the main spines was not scanned in an attempt to improve the resolution of the scan of the spheres. Seven main spines and two long by-spines. Radial bar (rb), microsphere (ms).

dimension for its microsphere ( $\text{\O}$ : 45–55  $\mu\text{m}$ ) and inner sphere ( $\text{\O}$ : 200–220  $\mu\text{m}$ ). *Inanihella* may also have a pylome on the outer sphere and can be distinguished from *Triplococcus* by the close spacing between its outer and inner sphere.

The long spines are diagnostic of this taxon, but are not always present or preserved. Noble and Aitchison (2000) defined a “long-spined inaniguttid zone 1” as a characteristic biostratigraphic interval covering the Darriwilian, which correlates with Nazarov’s (1988) *Haplentactinia juncta*-*Inanihella unica* Zone.

The material described herein is highly variable and could potentially belong to more than one species. Currently, the intra-specific variation among different taxa of the inaniguttid is not fully understood. A polarity can be argued because the two long by-spines extend at 120° to one another, as seen in *T. acanthicus* and the robust main spines are distributed on the lateral plane.

Our material is morphologically similar to *Triplococcus aksuranesis* reported by Pouille et al. (2013, fig. 4.1–4.14), which differs from the material in this study only in the number of outer spines and presence of numerous beams that originate at the surface of the median sphere rather than the surface of the inner sphere.

#### Genus *Plussatispila* MacDonald, 2006

*Type species.*—*Plussatispila magnilimax* MacDonald, 2006, from the upper Llandovery of the Cape Phillips Formation, Cornwallis Island, Nunavut, Canada, by original designation.

*Remarks.*—Larger taxa are more difficult to compare because their internal features can be more affected by infilling and breakage. Furthermore, the resolution of the number of spheres and spines number in the family Inaniguttidae remains elusive. Thus, synonymies should be approached with caution.

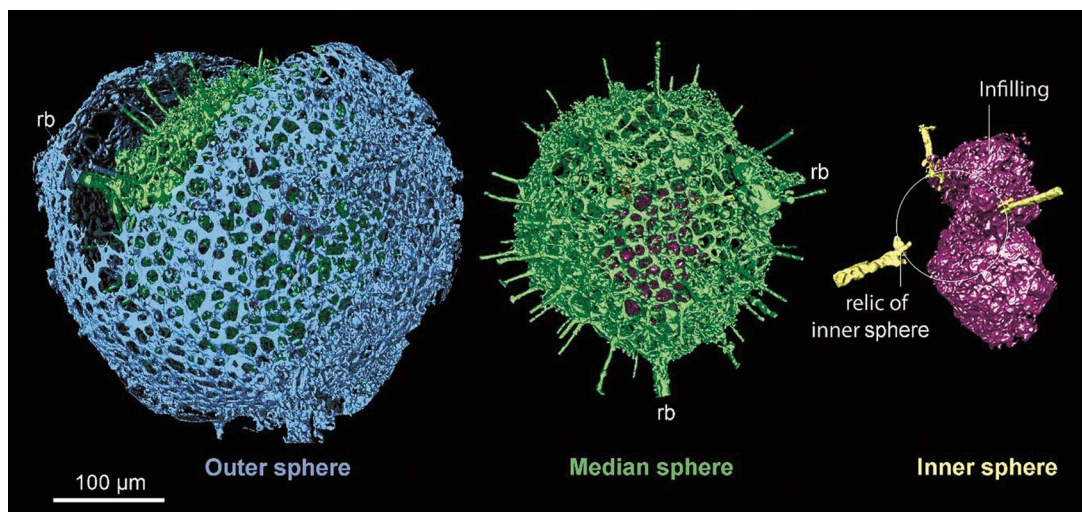
#### *Plussatispila* sp. cf. *P. cornwallisensis* MacDonald, 2006 Figures 8.1–8.5, 10

cf. 2006 *Plussatispila cornwallisensis* MacDonald, p. 34, figs. 3.2, 3.4, 3.6, 3.9, 7.1, 7.2, 7.4, 7.5, 7.7, 7.8, 7.11, 7.12.

*Holotype.*—Specimen (GSC 126515) from the upper Llandovery of the Cape Phillips Formation, Cornwallis Island, Nunavut, Canada (*Plussatispila cornwallisensis* MacDonald, 2006, fig. 3.2).

*Occurrence.*—Middle Ordovician, middle Darriwilian from the Table Cove Formation, western Newfoundland.

*Description.*—Outer sphere  $\text{\O}$ : 358–418  $\mu\text{m}$  (average 362  $\mu\text{m}$ ); median sphere  $\text{\O}$ : 250–297  $\mu\text{m}$ ; inner sphere  $\text{\O}$ :  $\sim$ 100  $\mu\text{m}$ . Secondary infilling and imperfect preservation preclude detailed observation of the microsphere. Specimens show no evidence of a fourth sphere. Numerous by-spines originate at the pore-junction of the median sphere. Twelve out of 18 specimens have by-spines that do not project to the external



**Figure 10.**  $\mu$ -CT model of a digitally segmented specimen of *Plussatispila* sp. cf. *P. cornwallisensis* MacDonald, M4S09 from sample PD13. Main spines are left out of the field of view in order to gain maximum resolution for the internal features. The inner sphere and microsphere have been destroyed by secondary infilling and the growth of calcite crystals (false color purple). Radial bar (rb).

surface of the outer sphere (Figs. 8.5, 10). The presence of a pylome is difficult to assess.

**Materials.**—Nineteen specimens identified from the Table Cove Formation, Piccadilly Quarry, western Newfoundland.

**Remarks.**—*Plussatispila* sp. cf. *P. cornwallisensis* is easily distinguished by its large size, even though it is commonly poorly preserved. This taxon can be distinguished from *Triplococcus* and other three-sphered inaniguttids by the larger diameter of the outer and median spheres (outer sphere  $\text{\O}$ : 358–418  $\mu\text{m}$ ; median sphere  $\text{\O}$ : 250–297  $\mu\text{m}$ ).

Our material can be compared to the lower Silurian (upper Llandovery) *P. cornwallisensis* reported by MacDonald (2006: outer sphere  $\text{\O}$ : 384–495  $\mu\text{m}$ ; median sphere  $\text{\O}$ : 240–303  $\mu\text{m}$ ; inner sphere  $\text{\O}$ : 83–98  $\mu\text{m}$ ). This could possibly extend the stratigraphic range of *P. cornwallisensis* to the Middle Ordovician. Our material differs by lacking the apophyses that develop on the radial beams between the inner and median sphere, and is likely to represent an intermediate form between *Plussatispila* and possibly *Triplococcus*.

#### Genus *Inanibigutta* Nazarov, 1988

**Type species.**—*Inanibigutta aksakensis* (Nazarov, 1975) from the dark gray argillaceous limestone of the lower part of the Bestamak Formation, Chingiz Range Kazakhstan, by original designation.

**Remarks.**—Preservation and obstruction of the internal elements makes the identification of the genus *Inanibigutta* difficult from the rest of the inaniguttids. It was curious to note the rarity of this this genus in our material when other authors report it at higher relative abundance from other localities (Fig. 5). Whether this is a true faunal bias or a selection bias is uncertain.

#### *Inanibigutta* sp. A

##### Figure 8.6–8.8

**Occurrence.**—Middle Ordovician, middle Darrivilian from the Table Cove Formation, western Newfoundland.

**Description.**—Spherical skeleton, with six main spines of approximately the same size (up to 310  $\mu\text{m}$  long). Main spines rod-like, thin, regularly narrowing towards a sharp distal end. No by-spines observed. Outer sphere ( $\text{\O}$ : 184–200  $\mu\text{m}$ ) with many small pores ( $\text{\O}$ :  $\sim$ 5–8  $\mu\text{m}$ ) of various shapes (from oval to purely hexagonal). Inner sphere large ( $\text{\O}$ : 90–100  $\mu\text{m}$ ), thin, with many small pores of various shapes but of approximately the same size. Microsphere ( $\text{\O}$ :  $\sim$ 50  $\mu\text{m}$ ) occasionally preserved.

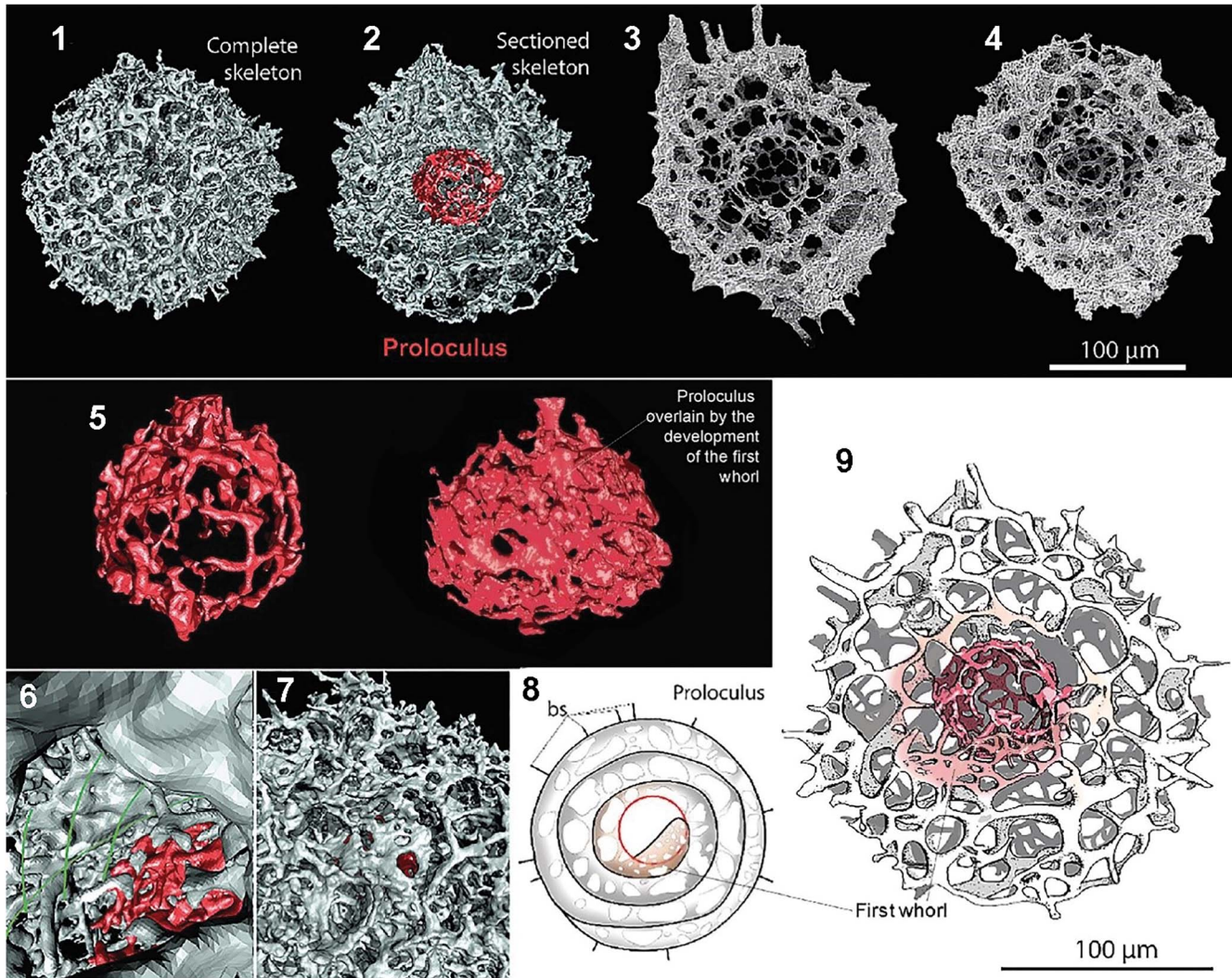
**Materials.**—Five specimens identified from the Table Cove Formation, Piccadilly Quarry, western Newfoundland.

**Remarks.**—It is difficult to distinguish *Inanibigutta* sp. A from the long-spined *Triplococcus aksuranensis* due to the identical sphere dimensions of *T. aksuranensis* (median sphere  $\text{\O}$ : 183–220  $\mu\text{m}$ ; inner sphere  $\text{\O}$ : 90–110  $\mu\text{m}$ ; microsphere  $\text{\O}$ : 50  $\mu\text{m}$ ). The only difference being that there is no growth of a fourth shells, like that seen in *T. aksuranensis*.

#### Family Haplotaeniataidae Won, Blodgett, and Nestor, 2002

**Emended diagnosis.**—Spherical skeleton with continuous but irregular whorls with a spiraliform arrangement. A microsphere is positioned at the innermost part of the skeleton and directly connected to the first whorl.

**Remarks.**—Emendment to the diagnosis of Won et al. (2002) is appropriate because a continuous spiral arrangement can be observed with the  $\mu$ -CT (Fig. 11). The first whorl begins from



**Figure 11.** Compilation of line drawings,  $\mu$ -CT models and SEM images illustrating *Haplotaeniatum* sp. cf. *H. vertigospongum* Jones and Noble. (1, 2)  $\mu$ -CT models with the microsphere identified in red; (3, 4) SEM images of a sectioned specimen of *Haplotaeniatum* sp. cf. *H. vertigospongum* Jones and Noble; (3) PD13; (4) PD09; (5) digitally segmented microsphere including the initiation of the first whorl; (6) view from inside the first whorl demonstrating the distinct gap and surface between whorls; (7) spongy outer sphere; (8) diagram showing configuration of the microsphere's irregular spiral structure and by-spines; (9) detailed diagram showing the relationship among the microsphere, spiraliform arrangement of whorls, and the by-spines.

the microsphere (some authors use the term proloculus) and is spirally arranged. The whorl continues in a relatively well-developed but irregular spiral structure throughout most of its skeleton to the outer surface where it then becomes discontinuous to form a closed, outer sphere. Although the extent of development of spiral structures may vary between taxa, the existence of a continuous spiral arrangement should be included in the family description.

Genus *Haplotaeniatum* Nazarov and Ormiston, 1990, sensu Won, Blodgett, and Nestor, 2002, sensu Jones and Noble, 2006

*Type species.*—*Haplotaeniatum labyrinthum* Nazarov and Ormiston, 1990, from the middle to upper Llandovery of the Sakmarskaya Suite, southern Urals, by original designation.

*Remarks.*—The genus *Haplotaeniatum* is restricted to forms with a weakly labyrinthine to spiraliform layering without a

distinct microsphere and outer sphere that can occur with or without major spines. The spiraliform layering is weak but recognizable in most sectioned specimens. However, due to the dense nature of the skeleton and the plane of the section being a function of how a specimen is sectioned, the spiraliform nature of the skeleton can still be difficult to distinguish on broken specimens.

It is difficult to discern the features that distinguish among species, but Middle Ordovician haplotaeniatids appear to differ from those of the Upper Ordovician in having a centrally positioned microsphere with a thinner meshwork.

*Haplotaeniatum* sp. cf. *H. vertigospongum* Jones and Noble, 2006  
Figure 11

cf. 2006

*Haplotaeniatum vertigospongum* Jones and Noble, p. 302, pl. 4, figs. 8, 9; pl. 6, fig. 6.

*Holotype*.—Specimen (UCMP 49802) from the lower Wenlock to upper Sheinwoodian of the Cape Phillips Formation, Arctic Canadian (Jones and Noble, 2006, pl. 4, fig. 8).

*Occurrence*.—Uppermost lower Silurian (Sheinwoodian) from the Cape Phillips Formation, Nunavut, Canada (Jones and Noble, 2006) and Middle Ordovician, middle Darriwilian from the Table Cove Formation, western Newfoundland (herein).

*Description*.—Test as per the genus description, consisting of three to four labyrinthine whorls in a spiraliform arrangement growing from a near-spherical microsphere ( $\text{\O}$ : 55–70  $\mu\text{m}$ ). The microsphere is centrally positioned and latticed with semi-regularly sized pores with irregular shape (pores  $\text{\O}$ : ~10  $\mu\text{m}$ ). The first whorl quickly develops into a loose meshwork consisting of interconnected loops after ~45  $\mu\text{m}$  of growth. Whorls are compact where the irregular spiraliform is generally difficult to distinguish, but can be recognized by the initial structure of the first whorl (Fig. 11). The first whorl begins from a distinct layer that is connected to the microsphere by a thickened growth with small, irregularly distributed pores (pore  $\text{\O}$ : 4–12  $\mu\text{m}$ ). The distance between the first whorl and the microsphere can range from 16–30  $\mu\text{m}$  before starting the next whorl. The whorls are continuous and can be followed in three-dimensional space with the  $\mu\text{-CT}$  model. Numerous thin beams are irregularly placed and connect between two whorls. The beams are generally not aligned, but intersect the beams in the previous whorl to produce an alternating arrangement of compartments in the three dimensions of space. The outermost whorl is bent out of the plane of coiling and closed to form a spherical outer sphere (outer sphere surface  $\text{\O}$ : 175–200  $\mu\text{m}$ ). The outer pores are irregularly shaped, sub-round to angular, and variable in size, giving the outer sphere a spongy appearance. Numerous by-spines cover the outer surface, which commonly consists of a protrusion of struts within the labyrinthine wall structure. No pylome was observed.

*Materials*.—Twenty-one specimens identified from the Table Cove Formation, Piccadilly Quarry, western Newfoundland.

*Remarks*.—The complex structure of *Haplotaeniatum* was studied with the  $\mu\text{-CT}$  to understand skeletal formation. Despite the regular shape in equatorial and axial thin section, the spiraliform structure cannot always be easily discerned. The meshwork is not interwoven tightly enough to define a spherical layer. The spiraliform structure was only visible in properly oriented cross-sections. However, the spiral is most pronounced in the area where the first whorl develops and this provides the clearest indicator of a spiral arrangement. The microsphere of haplotaeniatids differs from the microsphere observed in the multi-sphered inaniguttids by being directly connected to the next layer to form a spiral arrangement.

Our material is most closely comparable to *Haplotaeniatum vertigospongum* from the lower Silurian Cape Phillips Formation, Nunavut, Canada (Jones and Noble, 2006). Both lack any robust main spines, but the material in this study differs in its denser and more finely porous labyrinthine wall structure with numerous by-spines. The microsphere was not measured on *H. vertigospongum*. However, the outer sphere surface on

the material in this study is smaller (outer sphere  $\text{\O}$ : 175–200  $\mu\text{m}$ ; ~220–283  $\mu\text{m}$  in *H. vertigospongum*). This, however, could be a result of development of an extra whorl found in the Cape Phillips Formation material. Furthermore, *Haplotaeniatum* sp. cf. *H. vertigospongum* can be distinguished easily from other Middle Ordovician taxa assigned to *Haplotaeniatum* in its smaller size (outer sphere  $\text{\O}$ : 336–354  $\mu\text{m}$  in *H. circulus*; 296–354  $\mu\text{m}$  in *H. labyrinthum*) and slightly larger, centrally positioned microsphere ( $\text{\O}$ : 40–52  $\mu\text{m}$  in *H. circulus* Pouille, Danelian, and Popov, 2014; 38–43  $\mu\text{m}$  in *H. labyrinthum*; 55–70  $\mu\text{m}$  in *Haplotaeniatum* sp. cf. *H. vertigospongum*).

*Haplotaeniatum* sp. cf. *H. vertigospongum* differs from *H. tegimentum* Nazarov (Nazarov and Ormiston, 1990, fig. 9.8) in having a larger, eccentrically placed microsphere (55–70  $\mu\text{m}$  cf. 34–42  $\mu\text{m}$  in *H. tegimentum*), aligned compartments, and a more robust skeleton.

#### *Haplotaeniatum* sp.

#### Figure 8.2

*Occurrence*.—Upper Ordovician, middle Darriwilian from the Table Cove Formation, western Newfoundland.

*Description*.—Small specimen of *Haplotaeniatum* (outer sphere  $\text{\O}$ : 240  $\mu\text{m}$ ) with numerous by-spines (40  $\mu\text{m}$  long) where main spines are absent. Three, likely more, pseudo-spongy internal spheres displaying a slightly spiraliform arrangement.

*Materials*.—Ten specimens identified from sample PD13 from the Table Cove Formation, Piccadilly Quarry, western Newfoundland.

*Remarks*.—The innermost framework is broken, but the spiral structure can be detected. *Haplotaeniatum* sp. (Fig. 8.2) is noteworthy because it is noticeably larger than *Haplotaeniatum* sp. cf. *H. vertigospongum* (Fig. 11). Since the innermost structure is broken on all specimens observed, it cannot be identified to the species level.

Genus *Syntagentactinia* Nazarov in Nazarov and Popov, 1980

*Type species*.—*Syntagentactinia biocculosa* Nazarov in Nazarov and Popov, 1980, from the Middle Ordovician Bestamak Formation, Southwest Pre-Tschingiz, Kazakhstan.

*Syntagentactinia biocculosa* Nazarov in Nazarov and Popov, 1980

#### Figure 8.1

1980 *Syntagentactinia biocculosa* Nazarov in Nazarov and Popov, pl. 12, figs. 1–3.

2014 *Syntagentactinia biocculosa*; Pouille et al., p. 151, pl. 1, figs. 5–7.

2018 *Syntagentactinia* sp. aff. *S. excels* Yi et al., figs. 4E–H.

*Holotype*.—Specimen (GIN 4333-18a) from the Middle Ordovician Bestamak Formation, Southwest Pre-Tschingiz, Kazakhstan (Nazarov and Popov, 1980, pl. 12, fig. 1).

**Occurrence.**—Middle Ordovician, Kazakhstan (Nazarov and Popov, 1980); South China (Yi et al., 2018); middle Darriwilian from the Table Cove Formation, western Newfoundland.

**Description.**—The outermost sphere ( $\emptyset$ : 250  $\mu\text{m}$ ) is formed of a dense labyrinth of spongy meshwork that originates from two levels of apophyses branching from the primary spines. Internal framework consists of a small, centrally located, latticed microsphere ( $\emptyset$ : 50  $\mu\text{m}$ ). Four visible long, massive main spines (up to 150  $\mu\text{m}$  or more) outside the outer sphere. No secondary spines are present. Four to six thin beams radiate from microsphere and become thick, robust primary spines at the surface.

**Materials.**—Two specimens identified from the Table Cove Formation, Piccadilly Quarry, western Newfoundland.

**Remarks.**—*Syntagentactinia bioculosa* is distinguished from other members of the genus *Syntagentactinia* by its denser labyrinth and possession of six long, robust rod-like spines. Because the primary spicules of the observed specimens are broken, it is difficult to know the exact number of primary rays that originated from the microsphere of the specimens in the material. The skeleton structure and dimensions closely resemble those of *Syntagentactinia* sp. cf. *S. excelsa* (Nazarov and Ormiston, 1993). However, *Syntagentactinia* sp. cf. *S. excelsa* differs by having a looser latticed inner sphere and in having a more distinct inner cavity.

## Results

The absence of the radiolarian species *Haplentactinia juncta* (Nazarov, 1975), which is one of the characteristic species of the *Haplentactinia juncta*-*Inanigutta unica* assemblage (Nazarov and Ormiston, 1993; Danelian and Popov, 2003; Maletz, 2011) is notable. The absence of *H. juncta* as well as the distinctive genus *Protoceraoikiscum* seems inconsistent with the conodont and graptolite age assignment. However, *Protoceraoikiscum* has been only reported, so far, from relatively deep-water facies (Goto et al., 1992; Li, 1995; Danelian and Clarkson, 1998; Danelian, 1999; Cui et al., 2000; Buckman and Aitchison, 2001; Danelian and Floyd, 2001; Noble and Webby, 2009; Obut and Semenova, 2011). The absence of *Protoceraoikiscum* supports the suggestion of (Nazarov and Popov (1980) and Pouille et al. (2013) that this taxon potentially reflects a particular paleoecological preference.

All taxa reported from this site (Fig. 5) are used to determine the relative abundances of the groups discussed below. Although a large variety of forms can be documented, a dominance (96% of the relative abundance) of spherical radiolarians (with at least one well-developed sphere) is attributable to the entactinarians, spumellarians, and the aspiculids. Furthermore, one spumellarian genus, *Triplococcus*, dominates and characterizes the assemblage (48% of the relative abundance). A similar dominance of the genus *Triplococcus* (37%) was reported from a similar black to dark-gray micritic limestone lithology from the uppermost Darriwilian Shundy Formation of

Kazakhstan (Pouille et al., 2014). Other researchers examining the Shundy Formation have also commented on this characteristic composition (Nazarov, 1975, 1988; Nazarov et al., 1977; Nazarov and Popov, 1980; Nazarov and Ormiston, 1993; Danelian and Popov, 2003). Thus, it is likely that this similarity is due to similarities in sedimentary and oceanographical conditions, which favored large blooms of spumellarians.

## Discussion

Assessment of biodiversity is hindered by difficulties in observing internal features. Some specimens were successfully sectioned for SEM analysis using Dumitrică's method (e.g., De Wever et al., 2001), but very few clear images were obtained, creating uncertainty in identifications. This could explain the apparent difference in faunal compositions between the material reported in this study and that reported from a nearby locality by Renz (1990). Renz (1990) reported that 92% of the relative abundance was attributable to the Family Inaniguttidae. Whereas the inaniguttid genus, *Triplococcus*, comprises 48% of the fauna reported herein. Such differences among Ordovician radiolarian faunas may be a result of preservational bias. For example, most studies have been made from cherts (Danelian and Clarkson, 1998; Buckman and Aitchison, 2001; Danelian and Floyd, 2001) where the specimens are strongly recrystallized and the full original range of taxa may be indeterminate.

**Taxonomic review.**—A high degree of variability exists among the sizes of different spheres in many groups (e.g., inaniguttids). However, they all appear to be united within their families by the mode of construction of their skeletal features. The presence of homologous elements of the internal framework and its rudiments in the majority of radiolarians suggests the monophyletic origin of this group. They are constructed from pore-bars with slightly polygonal outlines or from bandages. Bandage-like development and labyrinthine skeletons first appeared in the Middle Ordovician (uppermost Floian to basal Dapingian; Maletz and Bruton, 2007). Radiolarians with these types of skeletal development represent the first known appearances of members of the order Spumellaria. In this study,  $\mu$ -CT images of *Triplococcus acanthicus* and *T. aksuranesis* reveal a development of the initial sphere with "bandages." *Haplotaeniatum* sp. cf. *H. vertigospongum* is revealed to be a labyrinthine species.

Examination of the structural development of sphere walls is necessary in the identification of extant taxa. However, taphonomy can easily affect the thickness and structure of a fossil skeleton. Even in the well-preserved specimens studied here, there is a varying degree of development from different regions on the same specimen. Depending on the angle of observation, this can affect the shape, size, and configuration of pores.

**Inaniguttidae.**—A brief review of the dominant Ordovician inaniguttids is provided here. Although first described over 30 years ago (Nazarov and Ormiston, 1984), the internal structures of the type species of several genera assigned to this family have never been clearly displayed and are in need of



revision. Currently, in order to differentiate between species within the inaniguttid genera, comparisons are based on a wide variety of the sphere dimensions, numbers of outer spines, sphericity, and spacing between spheres. For example, in spite of the overall morphological similarity of *T. acanthicus* and *T. aksuranensis*, *T. acanthicus* has smaller, robust spheres that can be easily identified (outer sphere  $\emptyset$ : 216–230  $\mu\text{m}$  in *T. acanthicus*;  $\emptyset$ : 290  $\mu\text{m}$  in *T. aksuranensis*). The practice of quantitatively comparing the dimensions of skeletal elements of spherical radiolarians among various morphotypes similar to that applied in studies of Cenozoic forms (Cortese and Björklund, 1998) is adopted here. Centrifugal growth is an essential part of skeletal development, allowing the living cell to increase in size as it grows. The relevance of the number of spheres, skeletal spines, and their connections needs to be seen from a phylogenetic view in order to differentiate homoplasies from homologies. Hollande and Enjumet (1960) remarked that there is a constant relationship between the structure and the size of the innermost skeleton and the morphology of the nucleo-axopodial complex they established. In other words, there is a constant relationship between the structure and size of the innermost skeleton and the systematics. Number of spheres is important, but considerable caution in identification is recommended because the internal features are generally delicate and fragile and, as a result, their preservation is uncommon.

When spheres are not all preserved, the median spheres of genus *Triplococcus* can easily be misidentified as spheres from one of the members of the genera *Inanihella*, *Inanibigutta*, and *Inanigutta*. Moreover, in other studies of Cenozoic radiolarians, it has been found that the number of spheres is variable depending on the ontogenic stage (Cleve, 1899; Petrushevskaya, 1967; Björklund, 1974; Itaki et al., 2003; Nishimura, 2003; Suzuki, 2006). MacDonald (2006) questioned the use of sphere number as a diagnostic feature, and Maletz (2011) argued that taxa in this family need to be re-evaluated because sphere number may also depend on the ontogenetic growth stage of the specimen being observed. Lastly, we are still uncertain about the limits of morphological variation in the dimensions of spheres between taxa. In our material, the inaniguttids were observed to have less variation in their species groups than those described in similar faunas by Danelian and Popov (2003) and Pouille et al. (2013).

Polarization of the skeleton is observed in the majority of the  $\mu\text{-CT}$  scans. This is not simply a single or homologous character in radiolarian evolution, but a general possibility and trend in many groups of radiolarians. It develops independently and is expressed in various ways and in different skeletal features. However, the type of polarization is unique and can occur as an eccentrically placed spicule or sphere, apical and basal pores, polarized spines, or as a pylome.

The presence of a pylome is variable and not a distinguishing criterion in many inaniguttids. However, the size of the pylome might be important. The presence of an indistinct pylome that is sometimes present on the median sphere of *Triplococcus aksuranensis* and *T. acanthicus* is a vague and unreliable feature for identification. It is noteworthy though because a similar pylome is used to distinguish the genus *Kalimnaspheera*, which can be externally similar to *Triplococcus*.

The microsphere of the inaniguttids is distinct from that in the haplotaeniids, and the phylogenetic relevance of the microsphere still needs to be explored in more detail. Although  $\mu\text{-CT}$  work has resolved some species-level problems, secondary infilling and poor preservation of the innermost features in our material precludes complete observation. The nature and relationship of the microsphere (if it existed) to other skeletal elements was not always revealed.

## Conclusions

The internal features of the radiolarians are much more complex than their external appearance suggests, with interlocking facets between numerous spheres of varying geometry and thickness. The mode of construction of their skeletal features is revealed to be a uniting feature within different clades of the order Spumellaria in the Middle Ordovician. The  $\mu\text{-CT}$  data from specimens of a new, previously undescribed radiolarian assemblage from the Table Cove Formation at the Piccadilly Quarry, western Newfoundland has provided a diagnostic tool for taxonomic assignment and an insight into the significance for the development of a natural taxonomy of Paleozoic radiolarians.

## Acknowledgments

We thank D. Wang and C. Evans at the University of Queensland Julius Kruttschnitt Mineral Research Centre (Brisbane, Australia) for their technical assistance and advice. Financial support towards investigation of early Paleozoic radiolarian evolution was provided by the Australian Research Council (ARC DP 1501013325 to Aitchison). Lastly, a big thanks to T. Danelian, O. Obut, and P. Noble for the helpful corrections to the manuscript.

## Accessibility of supplemental data

Data available from the UQ eSpace data repository. DOI: <http://dx.doi.org/10.14264/uql.2019.296>

## References

- Abaimova, G.P., 1971, New Early Ordovician conodonts from the southeastern part of the Siberian Platform: *Paleontological Journal*, v. 5, p. 486–493.
- Aitchison, J.C., Flood, P.G. and Malpas, J., 1998, Lowermost Ordovician (basal Tremadoc) radiolarians from the Little Port Complex, western Newfoundland (Lower Ordovician radiolarians, Newfoundland): *Geological Magazine*, v. 135, p. 413–419.
- Aitchison, J.C., Suzuki, N., Caridroit, M., Danelian, T., and Noble, P.J., 2017, Paleozoic radiolarian biostratigraphy, in Danelian, T., Caridroit, M., Noble, P., Aitchison, J.C., eds, *Catalogue of Paleozoic radiolarian genera: Geodiversitas*, v. 39, p. 503–531. doi:10.5252/g2017n3a5
- Apollonov, M.K., Zhemchuzhnikov, V.A., and Dubinina, S.V., 1990, Ordovician of the north-western Balkhash area: *Izvestiya Akademii Nauk Kazakhskoy SSR, Seriya Geologicheskaya*, p. 3–16. [in Russian]
- Barnes, C.R., and Poplawski, M.L.S., 1973, Lower and Middle Ordovician conodonts from the Mystic Formation, Québec, Canada: *Journal of Paleontology*, v. 47, p. 760–790.
- Bergström, S.M., 1979, First report of the enigmatic Ordovician microfossil *Konyrium* in North America: *Journal of Paleontology*, v. 53, p. 320–327.
- Björklund, K.R., 1974, A rare skeleton form in *Echinomma leptodermum* (Spumellarina, Radiolaria): *Sarsia*, v. 56, p. 43–46.
- Branson, E.B., and Mehl, M.G., 1933, *Conodont studies*: University of Missouri Studies, v. 8, p. 1–349.
- Buckman, S., and Aitchison, J.C., 2001, Middle Ordovician (Llandeilan) radiolarians from West Junggar, Xinjiang, China: *Micropalaeontology*, v. 47, p. 359–367. doi:10.2113/47.4.359

- Caridroit, M., Danelian, T., O'Dogherty, L., Cuvelier, J.C., Aitchison, J.C., Pouille, L., Noble, P.J., Dumitrica, P., Suzuki, N., Kuwahara, K., Maletz, J., and Feng, Q.L., 2017, An illustrated catalogue and revised classification of Paleozoic radiolarian genera: *Geodiversitas*, v. 3, p. 363–417.
- Cavalier-Smith, T., 1987, The origin of eukaryotic and archaeobacterial cells: *Annals of the New York Academy of Sciences*, v. 503, p. 17–54. doi:10.1111/j.1749-6632.1987.tb40596.x.
- Cleve, P.T., 1899, Plankton collected by the Swedish expedition to Spitzbergen in 1898: *Kongliga Svenska Vetenskaps-Akademiens Handlingar*, n. ser., v. 32, p. 1–48.
- Cooper, M., Weissenberger, J., Knight, I., Hostad, D., Gillespie, D., Williams, S., and Clark, E., 2001, Basin evolution in western Newfoundland: new insights from hydrocarbon exploration: *American Association of Petroleum Geologists Bulletin*, v. 85, p. 393–418. doi:10.1306/8626C901-173B-11D7-8645000102C1865D
- Cortese, G., and Björklund, K.R., 1998, Morphometry and taxonomy of *Hexacantium* species from western Norwegian fjords: *Micropaleontology*, v. 44, p. 161–172. doi:10.2307/1486068
- Cui, Z., Hua, H., and Song, Q., 2000, The Late Ordovician radiolarian assemblage of the North Qinling back-arc basin, China: *Acta Geologica Sinica*, v. 74, p. 254–259.
- Danelian, T., 1999, Taxonomic study of Ordovician (Llanvirn–Caradoc) Radiolaria from the Southern Uplands (Scotland, U.K.): *Geodiversitas*, v. 21, p. 625–635.
- Danelian, T., and Clarkson, E.N.K., 1998, Middle Ordovician Radiolaria from bedded cherts of the Southern Uplands: *Scottish Journal of Geology*, v. 34, p. 133–137. doi:10.1144/sjg34020133
- Danelian, T., and Floyd, J., 2001, Progress in describing Ordovician siliceous biodiversity from the Southern Uplands (Scotland, U.K.): *Transactions of the Royal Society of Edinburgh, Earth Sciences*, v. 91, p. 489–498. doi:10.1017/S0263593300008336
- Danelian, T., and Popov, L., 2003, Ordovician radiolarian biodiversity: insights based on new and revised data from Kazakhstan: *Bulletin de la Société géologique de France*, v. 174, p. 325–335. doi:10.2113/174.4.325
- Danelian, T., Aitchison, J.C., Noble, P.J., Caridroit, M., Suzuki, N., and O'Dogherty, L., 2017, Historical insights on nearly 130 years of research on Paleozoic radiolarians, in Danelian, T., Caridroit, M., Noble, P.J., and Aitchison, J.C., eds., *Catalogue of Paleozoic radiolarian genera: Geodiversitas*, v. 39, p. 351–361. doi:10.5252/g2017n3a2
- De Wever, P., Dumitrica, P., Caulet, J.P., Nigrini, C., and Caridroit, M., 2001, Radiolarians in the sedimentary record: London, Gordon and Breach, 533 p.
- Dubinina, S.V., 2000, Conodonts and zonal stratigraphy of the Cambrian–Ordovician boundary deposits: *Trudy GIN Rossiiskoi Akademii Nauk*, v. 517, p. 1–239. [in Russian]
- Ehrenberg, C.G., 1838, Über die Bildung der Kreidelfelsen und des Kreidemergels durch unsichtbare Organismen: *Abhandlungen der königlichen preussischen Akademie der Wissenschaften zu Berlin*, p. 59–147.
- Ehrenberg, C.G., 1875, Fortsetzung der mikrogeologischen Studien als Gesamt-Uebersicht der mikroskopischen Paläontologie gleichartig analysirter Gebirgsarten der Erde, mit specieller Rücksicht auf den Polycystinen-Mergel von Barbados: *Abhandlungen der königlichen preussischen Akademie der Wissenschaften zu Berlin*, p. 1–226.
- Feltes, N.A., Albanesi, G.L., and Bergström, S.M., 2016, Conodont biostratigraphy and global correlation of the Middle Darrivilian–Lower Sandbian Las Aguaditas Formation, Precordillera of San Juan, Argentina: *Andean Geology*, v. 43, p. 60–85. doi:10.5027/andgeoV43n1-a04
- Finnery, S.C., and Skevington, D., 1979, A mixed Atlantic-Pacific province Middle Ordovician graptolite fauna in western Newfoundland: *Canadian Journal of Earth Sciences*, v. 16, p. 1899–1902. doi:10.1139/e79-176
- Fortey, R.A., and Holdsworth, B.K., 1971, The oldest known well-preserved Radiolaria: *Bollettino della Società Paleontologia Italiana*, v. 10, p. 35–41.
- Goto, H., Umeda, M., and Ishiga, H., 1992, Late Ordovician radiolarians from the Lachlan Fold Belt, Southeastern Australia: *Memoirs of the Faculty of Science, Shimane University*, v. 26, p. 145–170.
- Graves, R.W., and Ellison, S., 1941, Ordovician conodonts of the Marathon Basin, Texas: University of Missouri, School of Mines and Metallurgy, *Bulletin Technical Series*, v. 14, p. 1–26.
- Hollande, A., and Enjument, M., 1960., Cytologie, évolution et systématique des Sphaeroidés (Radiolaires): *Archives du Muséum National d'Histoire Naturelle*, Paris, 7e. Série, v. 7, p. 1–134.
- Itaki, T., Ito, M., Narita, H., Ahagond, N., and Sakai, H., 2003, Depth distribution of radiolarians from the Chukchi and Beaufort seas, western Arctic: *Deep-Sea Research, Pt. I*, v. 50, p. 1507–1522.
- James, N.P., Botsford, J.W., and Williams, S.H., 1987, Allochthonous slope sequence at Lobster Cove Head: evidence for a complex Middle Ordovician platform margin in western Newfoundland: *Canadian Journal of Earth Sciences*, v. 24, p. 1199–1211. doi:10.1139/e87-115
- Jones, M.K., and Noble, P.J., 2006, Sheinwoodian (uppermost Lower Silurian) Radiolaria from the Cape Phillips Formation, Nunavut, Canada: *Micropaleontology*, v. 52, 289–315. doi:10.2113/gsmicropal.52.4.289
- Kachovich, S., Sheng, J., and Aitchison, J.C., 2019, Adding a new dimension to investigations of early radiolarian evolution: *Scientific Reports*, v. 9, p. 6450. doi:10.1038/s41598-019-42771-0
- Knight, I., 1991, Geology of Cambro-Ordovician in the Port Saunders (NTS 12I/1 1), Castors River (NTS 12I/15), St. John Island (NTS 12I/14) and Torrent River (NTS 12I/10) map areas: Newfoundland Department of Mines and Energy: Geological Survey Branch Report, p. 91–4, 138 p.
- Li, H., 1995, New genera and species of middle Ordovician Nassellaria and Albaillellaria from Baijingsi, Qilian Mountains, China: *Scientia Geologica Sinica*, v. 4, p. 331–346.
- Lindström, M., 1955, Conodonts from the lowermost Ordovician strata of south-central Sweden: *Geologiska Föreningens i Stockholm Förhandlingar*, v. 76, p. 517–604.
- MacDonald, E.W., 2006, Haplotaeniatumidae and Inaniguttidae (Radiolaria) from the Lower Silurian of the Cape Phillips Formation, Cornwallis Island, Nunavut, Canada: *Journal of Paleontology*, v. 80, p. 19–37. doi:10.1666/0022-3360(2006)080[0019:HAIRFT]2.0.CO;2
- Maletz, J., 2007, The Early Ordovician *Beothuka terranova* (Radiolaria) faunal assemblage in western Newfoundland: *Paläontologische Zeitschrift*, v. 81, p. 71–82. doi:10.1007/BF02988380
- Maletz, J., 2009, *Holmograptus spinosus* and the Middle Ordovician (Darrivilian) graptolite biostratigraphy at Les Méchins (Quebec, Canada): *Canadian Journal of Earth Sciences*, v. 46, p. 739–755. doi:10.1139/E09-048
- Maletz, J., 2011, Radiolarian skeletal structures and biostratigraphy in the early Palaeozoic (Cambrian–Ordovician): *Palaeoworld*, v. 20, p. 116–133. doi:10.1016/j.palwor.2010.12.007
- Maletz, J., and Bruton, D.L., 2007, Lower Ordovician (Chewtonian to Castlemainian) radiolarians of Spitsbergen: *Journal of Systematic Palaeontology*, v. 5, p. 245–288. doi:10.1017/S1477201907002039
- Maletz, J., and Bruton, D.L., 2008, The Middle Ordovician *Proventocitum procerulum* radiolarian assemblage of Spitsbergen and its biostratigraphic correlation: *Palaeontology*, v. 51, p. 1181–1200. doi:10.1111/j.1475-4983.2008.00803.x
- Maletz, J., and Egenhoff, S., 2011, Graptolite biostratigraphy and biogeography of the Table Head and Goose Tickle groups (Darrivilian, Ordovician) of western Newfoundland, in Guiterrez-Marco, J.C., Rabano, I., and Garcia-Bellido, D., eds., *Ordovician of the World, Cuadernos del Museo Geominero*, v. 14, p. 333–338.
- Maletz, J., Albanesi, G.L., and Voldman, G.G., 2009, Lower Darrivilian radiolarians from the Argentine Precordillera: *Geobios*, v. 42, p. 53–61. doi:10.1016/j.geobios.2008.09.002
- Morris, R.W., and Kay, M., 1966, Ordovician graptolites from the Middle Table Head Formation at Black Cove, near Port-au-Port, Newfoundland: *Journal of Paleontology*, v. 40, p. 1223–1229.
- Nazarov, B.B., 1975, Lower and middle Paleozoic radiolarians Kazakhstan (methods of investigation, systematics and stratigraphy): *Trudy Akademii Nauk SSSR: Geologic Institute*, v. 275, p. 1–203. [in Russian]
- Nazarov, B.B., 1988, Paleozoic Radiolaria, practical manual of microfauna of the USSR, Leningrad: *Radiolyarii Paleozoy*, v. 2, p. 1–232.
- Nazarov, B.B., and Ormiston, A.R., 1984, Tentative system of Paleozoic Radiolaria, in Petrushevskaya, M.G., and Stepanjants, S.D., eds., *Morphology, Ecology and Evolution of Radiolarians. Material from the IV Symposium of European Radiolarists EURORAD IV: Academiya Nauk SSSR, Zoological Institute, Leningrad, USSR*, p. 64–87.
- Nazarov, B.B., and Ormiston, A.R., 1990, The biostratigraphic potential of radiolarians from the Palaeozoic, in Chuashov, B.I., Zhaimoda, A.I., and Amon, E.O., eds., *Radiolaria in Biostratigraphy: Collected Proceedings: Ural'skoe otdelenie AN SSSR; Sverdlovsk*, p. 3–25, 121, 125, 126.
- Nazarov, B.B., and Ormiston, A.R., 1993, New biostratigraphically important Paleozoic Radiolaria of Eurasia and North America, in Blueford, J.R., and Murchey, B.L., eds., *Radiolaria of Giant and Subgiant Fields in Asia. Nazarov Memorial Volume: Micropaleontology, Special Publication*, v. 6, p. 22–60.
- Nazarov, B.B., and Popov, L.Y., 1980, Stratigraphy and fauna of the siliceous-carbonate sequence of the Ordovician of Kazakhstan (Radiolaria and inarticulate brachiopods): *Transactions of the Geological Institute of the Soviet Academy of Sciences*, v. 331, p. 1–192.
- Nazarov, B.B., Popov, L., and Apollonov, M.K., 1975, Radiolyarii nizhnego paleozoya Kazakhstana (Lower Paleozoic Radiolaria in Kazakhstan): *Izvestiya Akademii Nauk SSSR, Seriya Geologicheskaya* (Proceedings of the USSR Academy of Sciences, Geological Series), v. 10, p. 96–105.
- Nazarov, B.B., Popov, L.E., and Apollonov, M.K., 1977, Lower Paleozoic radiolarians of Kazakhstan: *International Geology Review*, v. 19, p. 913–920.
- Nishimura, A., 2003, The skeletal structure of *Prunopyle antarctica* Dreyer (Radiolaria) in sediment samples from the Antarctic Ocean: *Micropaleontology*, v. 49, p. 197–200.
- Noble, P.J., 1994, Silurian radiolarian zonation for the Caballos Novaculite, Marathon Uplift, West Texas: *Bulletins of American Paleontology*, v. 106, p. 1–55.
- Noble, P.J., and Aitchison, J.C., 2000, Early Paleozoic radiolarian biozonation: *Geology*, v. 28, p. 367–370.

- Noble, P.J., and Webby, B.D., 2009, Katian (Ordovician) radiolarians from the Malongulli Formation, New South Wales, Australia, a reexamination: *Journal of Paleontology*, v. 83, p. 548–561. doi:10.1666/08-179R.1
- Noble, P.J., Aitchison, J.C., Danelian, T., Dumitria, P., Maletz, Y., Suzuki, N., Cuvelier, J., Caridroit, M., and O'Dogherty, L., 2017, Taxonomy of Paleozoic radiolarian genera, in Danelian, T., Caridroit, M., Noble, P., and Aitchison, J.C., eds., *Catalogue of Paleozoic radiolarian genera: Geodiversitas*, v. 39, p. 419–502. doi:10.5252/g2017n3a4
- Obut, O.T., and Semenova, A.M., 2011, New data on Upper Ordovician radiolarians from the Gomy Altai (SW Siberia, Russia), in Guitierrez-Marco, J.C., Rabano, I., and Garcia-Bellido, D., eds., *Ordovician of the World: Instituto Geológico y Minero de España Cuadernos del Museo Geominero: Cuadernos del Museo Geominero*, v. 14, p. 403–406.
- Petrushevskaya, M.G., 1967, Radiolarians of the orders Spumellaria and Nassellaria from the Arctic Realm (materials of the Soviet Arctic Expeditions). *Studies in marine faunas*, 4 (12), results of biological investigations of the Soviet Arctic Expeditions of 1955–1958: *Issledovaniya Fauny Morei*, v. 3, p. 5–186. [in Russian]
- Pouille, L., Danelian, T., Pour, M.G., and Popov, L.E., 2013, New and revised inaniuttid Radiolaria and associated trilobites from the upper Darrivilian (Ordovician) Shundy Formation of Kazakhstan: *Journal of Paleontology*, v. 87, p. 1143–1159. doi:10.1666/12-106
- Pouille, L., Danelian, T., and Popov, L.E., 2014, A diverse Upper Darrivilian radiolarian assemblage from the Shundy Formation of Kazakhstan: insights into late Middle Ordovician radiolarian biodiversity: *Micropalaeontology*, v. 33, p. 149–163. doi:10.1144/jmpaleo2014-008
- Renz, G.W., 1990, Ordovician Radiolaria from Nevada and Newfoundland—a comparison at the family level: *Marine Micropaleontology*, v. 15, p. 393–402. doi:10.1016/0377-8398(90)90022-E
- Riedel, W.R., 1967, Some new families of Radiolaria: *Proceedings of the Geological Society of London*, v. 1640, p. 148–149.
- Stenzel, S.R., Knight, I., and James, N.P., 1990, Carbonate platform to foreland basin: revised stratigraphy of the Table Head Group (Middle Ordovician) western Newfoundland: *Canadian Journal of Earth Sciences*, v. 27, p. 14–26. doi:10.1139/e90-002
- Stouge, S., 1984, Conodonts of the Middle Ordovician Table Head Formation, western Newfoundland: *Fossils and Strata*, v. 16, p. 1–145.
- Suzuki, N., 2006, Ontogenetic growth and variation in the skeletal structure of two late Neogene *Sphaeropyle* species (Polycystina radiolarians): *Journal of Paleontology*, v. 80, p. 849–866. doi:10.1666/0022-3360(2006)80[849:OGAVIT]2.0.CO;2
- Sweet, W.C., and Bergström, S.M., 1962, Conodonts from the Pratt Ferry Formation (Middle Ordovician) of Alabama: *Journal of Paleontology*, v. 36, p. 1214–1252.
- Williams, S.H., Boyace, W.D., and James, N.P., 1987, Graptolites from the Lower–Middle Ordovician St. George and Table Head groups, western Newfoundland, and their correlation with trilobite, brachiopod, and conodont zones: *Canadian Journal of Earth Sciences*, v. 24, p. 456–470.
- Won, M.Z., and Iams, W.J., 2002, Late Cambrian radiolarian faunas and biostratigraphy of the Cow Head Group, western Newfoundland: *Journal of Paleontology*, v. 76, p. 1–33. doi:10.1017/S0022336000017315
- Won, M.Z., and Iams, W.J., 2011, Earliest Arenig Radiolarians from the Cow Head Group, Western Newfoundland: *Journal of Paleontology*, v. 85, p. 156–177. doi:10.1666/10-102.1
- Won, M.Z., and Iams, W.J., 2013, Early Ordovician (early Arenig) radiolarians from the Cow Head Group and review of the Little Port Complex fauna, Western Newfoundland: *Palaeoworld*, v. 22, p. 10–31. doi:10.1016/j.palwor.2012.11.001
- Won, M.Z., and Iams, W.J., 2015, Early/middle Arenig (late Floian) Radiolarian Faunal Assemblages from Cow Head Group, Western Newfoundland: *Palaeontographica Abteilung A*, v. 304, p. 1–63. doi:10.1127/pala/304/2015/1
- Won, M.Z., Blodgett, R.B., and Nestor, V., 2002, Llandoveryan (Early Silurian) radiolarians from the Road River Formation of East-Central Alaska and the new family Haplotaeiatumidae: *Journal of Paleontology*, v. 76, p. 941–964. doi:10.1017/S0022336000057796
- Won, M.Z., Iams, W.J., and Reed, K., 2005, Earliest Ordovician (early to middle Tremadocian) radiolarian faunas of the Cow Head Group, Western Newfoundland: *Journal of Paleontology*, v. 79, p. 433–459. doi:10.1666/0022-3360(2005)0792.0.CO;2
- Won, M.Z., Iams, W.J., and Reed, K., 2007, Late Tremadocian radiolarian faunas and biostratigraphy of the Cow Head Group, western Newfoundland, Canada: *Journal of the Korean Earth Science Society*, v. 28, p. 497–540. doi:10.5467/JKES.2007.28.4.497
- Yi, Y., Yuan, A., Aitchison, J.C. and Feng, Q., 2018, Upper Darrivilian (Middle Ordovician) radiolarians and ostracods from the Hulo Formation, Zhejiang Province, South China: *Journal of Earth Science*, p. 1–25. doi:10.1007/s12583-017-0951-6
- Zhang, X.G., and Pratt, B.R., 2000, A varied Middle Ordovician sponge spicule assemblage from Western Newfoundland: *Journal of Paleontology*, v. 74, p. 386–393. doi:10.1017/S0022336000031668
- Zong, R., Wang, Z., Gong, Y., Xiao, L., Wang, Z., and Fan, R., 2015, Ordovician radiolarians from the Yinisala ophiolitic mélange and their significance in western Junggar, Xinjiang, NW China: *Science China Earth Sciences*, v. 58, p. 776–783. doi:10.1007/s11430-014-4974-5

Accepted: 4 October 2019