

Distribution and potential habitat of the Vulnerable Himalayan wolf *Canis lupus chanco* in Bhutan

TASHI DHENDUP^{*1}, LETRO¹, TANDIN² and SONAM WANGDI¹

Abstract The rare Himalayan wolf *Canis lupus chanco* is categorized as Vulnerable on the IUCN Red List, and there is limited knowledge of its ecology and distribution. In Bhutan, the Himalayan wolf is one of the least known carnivores. Our aims in this study were to map the current distribution of the wolf in Bhutan and to identify potential habitats within the country. We compiled 32 records of wolf presence from camera-trap surveys and, using a maximum entropy approach, we estimated a potential habitat of 2,431 km², comprising c. 6.3% of Bhutan. However, wolf presence was localized and non-continuous. We recommend a detailed fine-scale habitat analysis in areas of potential habitat and genetic studies to investigate population structure. Knowledge of these matters will provide insights regarding connectivity and facilitate the development of conservation strategies for this threatened wolf.

Keywords Bhutan, camera-trap surveys, *Canis lupus chanco*, distribution, Himalayan wolf, *MaxEnt*, maximum entropy

The supplementary material for this article is available at doi.org/10.1017/S0030605324000127

The grey wolf *Canis lupus* is widely distributed across North America, Europe and Asia, yet faces extirpation in some locations, resulting in a distribution restricted to wilderness and remote areas (Boitani et al., 2023). A subspecies of the grey wolf, *Canis lupus chanco*, known as the Himalayan or Tibetan wolf, inhabits the Himalayas and Tibetan Plateau, and possesses unique genetic adaptations to high-altitude habitats (Werhahn et al., 2018; Joshi et al., 2020). Categorized as Vulnerable on the IUCN Red List, it has been estimated there are < 4,000 mature individuals, with a projected continuous decline (Werhahn et al., 2023). Although the wolves in Bhutan are most likely of the Himalayan subspecies, this has not yet been confirmed.

Little is known about the Himalayan wolf. It occurs in the upper trans-Himalayan region of India, Nepal, the Tibetan plateau and northern Bhutan. In Nepal, the wolf is highly threatened, with < 50 mature individuals recorded, and it

is categorized nationally as Critically Endangered (Jnawali et al., 2011). In Bhutan, the Himalayan wolf is rare and has been recorded mainly in the high alpine areas of Wangchuck Centennial and Jigme Dorji National Parks and Jigme Khesar Strict Nature Reserve. These records have been consistently associated with instances of livestock depredation (Wangchuk, 2004).

We compiled records of the wolf in Bhutan from bycatch in a snow leopard *Panthera uncia* survey during 2022–2023, which covered the northern protected areas and territorial forest divisions at elevations of 3,400–5,200 m (NCD, 2023; Plate 1). The survey area was divided into a 2 × 2 km grid, with a camera-trap station installed in each grid cell, at a location with high probability of snow leopard detection. Each camera-trap station consisted of two cameras, facing each other, to capture both flanks of passing animals. From August 2022 to January 2023, camera-trap stations were deployed across 310 locations. Additionally, we added one wolf record from a nationwide tiger *Panthera tigris* survey conducted during 2021–2022 and one from a survey for Pallas's cat *Otocolobus manul* in Jigme Dorji National Park in 2022.

To identify potential wolf habitats across Bhutan, we conducted habitat suitability modelling utilizing *MaxEnt* 3.4.0 (Philips et al., 2006; Supplementary Material 1). Prior to modelling, we checked for spatial autocorrelation amongst the records, retaining only one point per 1 × 1 km grid cell across the study area (Lham et al., 2021). A default *MaxEnt* model was implemented containing variables that included 19 bioclimatic variables, slope, aspect, elevation and land cover (see Supplementary Material 1 for details). We subsequently excluded variables contributing < 1% to the model (Gong et al., 2023). We then assessed the remaining variables for multicollinearity using the *vifcor* function, with a correlation threshold of 0.75, in the package *usdm* (Naimi et al., 2014) in R 4.3.1 (R Development Core Team, 2023).

We obtained 32 wolf presence points: 25 in Wangchuck Centennial National Park, four in Paro Forest Division, two in Jigme Dorji National Park and one in Jigme Khesar Strict Nature Reserve. From the nationwide snow leopard survey, the relative abundance index (calculated as the number of captures divided by the total sampling effort in days multiplied by 100) of wolves was 0.22, and the naïve occupancy (calculated as the number of camera-trap locations at which we detected wolves divided by the total number of camera-trap locations) was 0.1. The number of individuals captured per independent event was 1–4. The altitudinal range of grey wolf presence was 4,281–5,090 m.

*Corresponding author, tashidhend@gmail.com

¹Nature Conservation Division, Department of Forests and Park Services, Thimphu, Bhutan

²WWF Bhutan, Kawajangsa, Thimphu, Bhutan

Received 17 July 2023. Revision requested 14 September 2023.

Accepted 17 January 2024. First published online 6 May 2024.

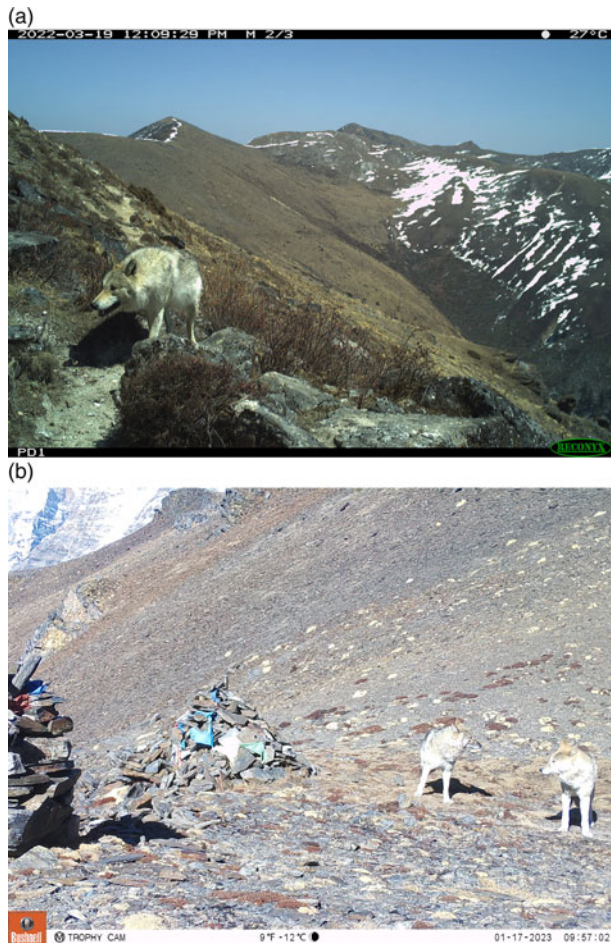


PLATE 1 (a) A Himalayan wolf *Canis lupus chanco* camera-trapped in Paro Forest Division in western Bhutan (elevation 4,557 m). (b) Two Himalayan wolves photographed at a high altitude pass between Soe and Lingzhi region of Jigme Dorji National Park (elevation 4,882 m).

The majority of wolf records occurred in alpine meadows (18 of 32), followed by juniper forests (6), rocky outcrops (3), scrubland (3), and ridge (1) and scree slopes (1). Amongst the camera stations, those strategically placed on ridgelines (13 of 32) recorded the highest number of wolf occurrences, followed by those on trails (11) and at the base of cliffs and valley bottoms (4 each). After checking for spatial autocorrelation, we used 31 location points for the *MaxEnt* model. The model demonstrated a high discriminatory power (area under curve = 0.970), estimating 2,431 km² of potential habitat in Bhutan (Fig. 1). The mean temperature of the warmest quarter (BIO10) was the most influential variable (Table 1).

There was a greater number of wolf records from Wangchuck Centennial National Park than in other locations. Despite extensive coverage in the nationwide snow leopard survey and reportedly having a high density of blue sheep *Pseudois nayaur*, which is a preferred wild prey for wolves in Bhutan, there were fewer wolf records in Jigme

Dorji National Park. There were no wolf records in Bumdeling Wildlife Sanctuary in the east, although the *MaxEnt* model predicts the presence of suitable habitat in the area. Discrepancies in prediction of suitable habitat by *MaxEnt* may arise if there are no records from particular regions or if ecological factors, such as prey availability, are not included in the model. Further research is required to identify key ecological variables for a detailed fine-scale habitat analysis in areas of potential habitat (Červinka et al., 2013; Rich et al., 2017; Wolf & Ripple, 2018). Jigme Khesar Strict Nature Reserve is proximal to the Indian state of Sikkim, where there have been wolf sightings (Choudhury, 2015), and it is possible that wolves move between these areas. Investigating gene flow and connectivity amongst wolf populations in Bhutan and neighbouring regions would provide a better understanding of genetic diversity, population structure and the impacts of barriers on gene flow. Knowledge of these matters is essential for effective conservation strategies, particularly within the broader Himalayan and Tibetan contexts.

In the Himalayas and Tibet, wolves rely on domestic prey as well as on wild prey species (Lyngdoh et al., 2020; Shrotriya et al., 2022). In Bhutan, blue sheep comprise the main wild prey of the wolf in high-altitude regions, with blue sheep densities relatively higher in western areas and declining towards the east (Lham et al., 2021). Other potential prey species include the Himalayan musk deer *Moschus chrysogaster*, marmot *Marmota himalayana*, goral *Naemorhedus goral* and serow *Capricornis thar* (NCD, 2023). Livestock also comprise a significant proportion of wolf prey, particularly in regions with limited natural prey and suboptimal livestock husbandry, as reported in the higher altitudes of Wangchuck Centennial National Park (Jamtsho & Wangchuk, 2016; Lyngdoh et al., 2020). Wolves frequently prey on livestock in the Park, especially adult yaks, resulting in economic losses that are nearly double those attributed to snow leopards and fostering negative attitudes towards wolves and other predators (Jamtsho & Katel, 2019). The absence of compensation for livestock losses increases the risk of persecution of wolves and threatens the long-term persistence of the species in Bhutan. Anecdotal sources describe a near extirpation of the wolf population in some parts of the country, and suggest that local people set fires in denning caves.

We have described the grey wolf distribution in the Bhutan Himalayas for the first time, and our findings suggest a restricted range for the species, in < 7% of the country. The IUCN Red List indicates wolf range in > 50% of Bhutan (Boitani et al., 2023), implying wolves are widespread across northern Bhutan. Our findings will help inform a revision of this assessment. There is a need to examine the dynamics of human–wolf conflict in Bhutan, for designing appropriate intervention strategies to minimize any conflict. A study of wolf diet using

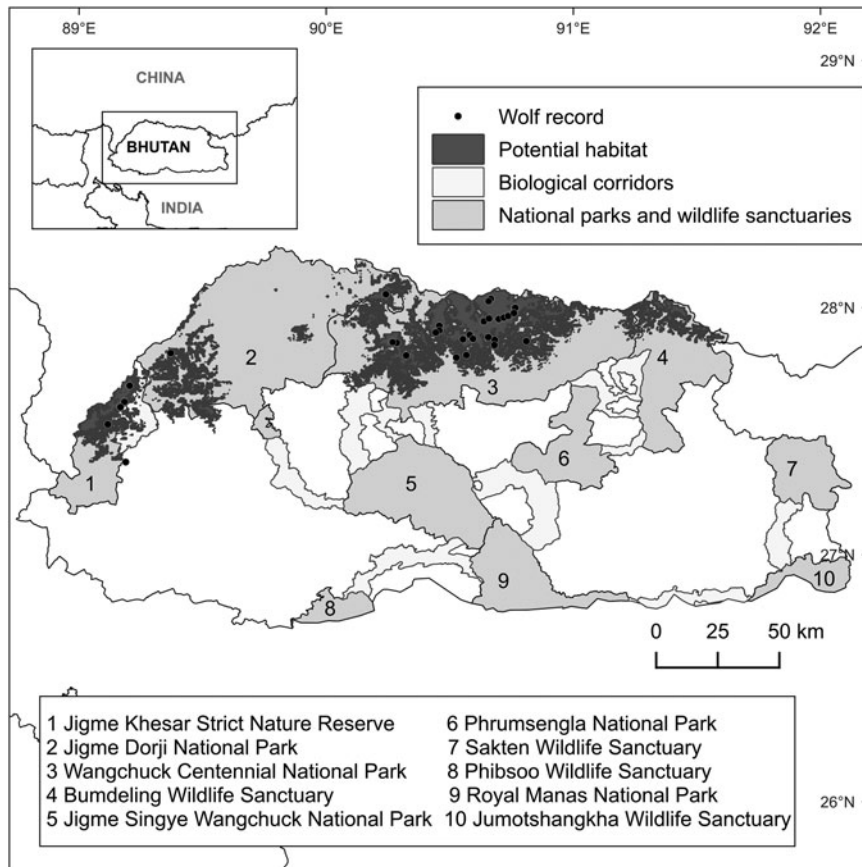


FIG. 1 Himalayan wolf *Canis lupus chanco* records in Bhutan, potential habitat for the wolf modelled with *MaxEnt*, and national parks and wildlife sanctuaries and the biological corridors connecting them.

TABLE 1 Relative contributions of four environmental variables to the model of potential habitat for the Himalayan wolf *Canis lupus chanco* in Bhutan (Fig. 1) using *MaxEnt*. We executed a full model with all 23 variables, and variables contributing < 1% were excluded from the final model.

Environmental variable	Description	Contribution (%)
BIO10	Mean temperature of warmest quarter	35.2
BIO7	Temperature annual range (BIO5–BIO6)	31.5
Land cover	Major land-cover types	18.5
BIO14	Precipitation of driest month	14.8

techniques such as DNA metabarcoding of scats would facilitate the identification of prey species and the degree of dependence on domestic livestock. In conclusion, to ensure the long-term survival of the Himalayan wolf, further investigation is needed in Bhutan of its distribution, ecology and abundance Himalayan and of the availability of suitable wild prey.

Acknowledgements We thank the Nature Conservation Division under the Department of Forests and Park Services for allowing us to use the nationwide snow leopard and tiger survey data.

Author contributions Data analysis: TD; writing: TD with input from all authors.

Conflicts of interest None.

Ethical standards This research abided by the *Oryx* guidelines on ethical standards.

Data availability The data that support the findings of this study are available from the corresponding author, TD, upon reasonable request.

References

- BOITANI, L., PHILIPS, M. & JHALA, Y. (2023) *Canis lupus* (amended version of 2018 assessment). In *The IUCN Red List of Threatened Species* 2023. [dx.doi.org/10.2305/IUCN.UK.2023-1.RLTS.T3746A247624660.en](https://doi.org/10.2305/IUCN.UK.2023-1.RLTS.T3746A247624660.en).
- ČERVINKA, J., ŠÁLEK, M., PADYŠÁKOVÁ, E. & ŠMILAUER, P. (2013) The effects of local and landscape-scale habitat characteristics and prey availability on corridor use by carnivores: a comparison of two contrasting farmlands. *Journal for Nature Conservation*, 21, 105–113.
- CHOUDHURY, A. (2015) The Tibetan wolf *Canis lupus chanco* Gray (Mammalia: Carnivora: Canidae) in northeastern India with a recent sighting from northern Sikkim, India. *Journal of Threatened Taxa*, 7, 7475–7476.
- GONG, S., GAO, Y., DUAN, H., GE, Y. & WEI, Y. (2023) Incorporating physiological data into species distribution models to predict the potential distribution range of the red-eared slider in China. *Ecological Indicators*, 154, 110749.

- JAMTSHO, Y. & KATEL, O. (2019) Livestock depredation by snow leopard and Tibetan wolf: implications for herders' livelihoods in Wangchuck Centennial National Park, Bhutan. *Pastoralism*, 9, 1–10.
- JAMTSHO, Y. & WANGCHUK, S. (2016) Assessing patterns of human–Asiatic black bear interaction in and around Wangchuck Centennial National Park, Bhutan. *Global Ecology and Conservation*, 8, 183–189.
- JNAWALI, S., BARAL, H., LEE, S., ACHARYA, K., UPADHYAY, G., PANDEY, M. et al. (2011) *The Status of Nepal's Mammals: The National Red List Series*. Department of National Parks and Wildlife Conservation, Kathmandu, Nepal. archive.nationalredlist.org/files/2015/10/The-Status-of-Nepals-Mammals-Red-List-compressed.pdf [accessed February 2024].
- JOSHI, B.D., LYNGDOH, S., SINGH, S.K., SHARMA, R., KUMAR, V., PRAKASH, T.V. et al. (2020) Revisiting the woolly wolf (*Canis lupus chanco*) phylogeny in Himalaya: addressing taxonomy, spatial extent and distribution of an ancient lineage in Asia. *PLOS One*, 15, e0231621.
- LHAM, D., COZZI, G., SOMMER, S., THINLEY, P., WANGCHUK, N., WANGCHUK, S. & OZGUL, A. (2021) Modeling distribution and habitat suitability for the snow leopard in Bhutan. *Frontiers in Conservation Science*, 2, 781085.
- LYNGDOH, S., HABIB, B. & SHROTRIYA, S. (2020) Dietary spectrum in Himalayan wolves: comparative analysis of prey choice in conspecifics across high-elevation rangelands of Asia. *Journal of Zoology*, 310, 24–33.
- NAIMI, B., HAMM, N.A.S., GROEN, T.A., SKIDMORE, A.K. & TOXOPEUS, A.G. (2014) Where is positional uncertainty a problem for species distribution modelling? *Ecography*, 37, 191–203.
- NCD (2023) *Snow Leopard Status in Bhutan: National Snow Leopard Survey Report 2022–2023*. Nature Conservation Division, Department of Forests and Park Services, The Ministry of Energy and Natural Resources, Royal Government of Bhutan, Thimphu, Bhutan.
- PHILIPS, S.J., ANDERSON, R.P. & SCHAPIRE, R.E. (2006) Maximum entropy modeling of species geographic distributions. *Ecological Modelling*, 190, 231–259.
- R DEVELOPMENT CORE TEAM (2023) *R: A Language and Environment for Statistical Computing*. R Foundation for Statistical Computing, Vienna, Austria. R-project.org [accessed July 2023].
- RICH, L.N., MILLER, D.A.W., ROBINSON, H.S., MCNUTT, J.W. & KELLY, M.J. (2017) Carnivore distributions in Botswana are shaped by resource availability and intraguild species. *Journal of Zoology*, 303, 90–98.
- SHROTRIYA, S., RESHAMWALA, H.S., LYNGDOH, S., JHALA, Y.V. & HABIB, B. (2022) Feeding patterns of three widespread carnivores—the wolf, snow leopard, and red fox—in the Trans-Himalayan landscape of India. *Frontiers in Ecology and Evolution*, 10, 1–13.
- WANGCHUK, T.R. (2004) Integrating yak herding communities into conservation and resource management planning processes in JDNP. In *Strategic Innovations for Improving Pastoral Livelihoods in the Hindu Kush–Himalayan Highlands; Volume II: Technical Papers* (eds C. Richard & K. Hoffmann), pp. 159–172. International Centre for Integrated Mountain Development, Kathmandu, Nepal.
- WERHAHN, G., HENNELLY, M., LYNGDOH, S.J., HABIB, B., VIRANTA, S. & SHROTRIYA, S. (2023) *Canis lupus ssp. chanco*. In *The IUCN Red List of Threatened Species 2023*. dx.doi.org/10.2305/IUCN.UK.2023-1.RLTS.T223987824.A223987841.en.
- WERHAHN, G., SENN, H., GHAZALI, M., KARMACHARYA, D., SHERCHAN, A.M., JOSHI, J. et al. (2018) The unique genetic adaptation of the Himalayan wolf to high-altitudes and consequences for conservation. *Global Ecology and Conservation*, 16, e00455.
- WOLF, C. & RIPPLE, W.J. (2018) Rewilding the world's large carnivores. *Royal Society Open Science*, 5, 172235.