

Galacto-oligosaccharides increase calcium absorption and gut bifidobacteria in young girls: a double-blind cross-over trial

Corrie M. Whisner¹, Berdine R. Martin¹, Margriet H. C. Schoterman², Cindy H. Nakatsu³, Linda D. McCabe⁴, George P. McCabe⁴, Meryl E. Wastney⁵, Ellen G. H. M. van den Heuvel^{2,6} and Connie M. Weaver^{1*}

¹Department of Nutrition Science, Purdue University, Stone Hall, 700 W. State Street, West Lafayette, IN 47907, USA

²FrieslandCampina, Stationsplein 4, 3818 LE, Amersfoort, The Netherlands

³Department of Agronomy, Purdue University, Stone Hall, 700 W. State Street, West Lafayette, IN 47907, USA

⁴Department of Statistics, Purdue University, Stone Hall, 700 W. State Street, West Lafayette, IN 47907, USA

⁵Metabolic Modeling Services, Stone Hall, 700 W. State Street, West Lafayette, IN 47907, USA

⁶Department of Epidemiology and Biostatistics, EMGO Institute for Health and Care Research, VU University Medical Center, Amsterdam, The Netherlands

(Submitted 30 August 2012 – Final revision received 9 January 2013 – Accepted 9 January 2013 – First published online 14 March 2013)

Abstract

Adolescence is a time for rapid growth that represents an opportunity to influence peak bone mass. Prebiotic agents, such as galacto-oligosaccharides (GOS), increase Ca absorption in animal models and postmenopausal women. The objectives of the present study were to investigate the dose–response relationship of GOS supplementation on Ca absorption during growth and to assess changes in colonic microbiota to better understand the mechanism by which GOS is acting. A total of thirty-one healthy adolescent girls aged 10–13 years consumed smoothie drinks twice daily with 0, 2.5 or 5 g GOS for three 3-week periods in a random order. Fractional Ca absorption was determined from urinary Ca excretion over 48 h at the end of each 3-week period using a dual stable isotope method. Faecal microbiota and bifidobacteria were assessed by PCR–denaturing gradient gel electrophoresis and quantitative PCR. Fractional Ca absorption after the 48 h treatment with control, 5 and 10 g GOS/d was 0.393 (SD 0.092), 0.444 (SD 0.086) and 0.419 (SD 0.099), respectively. Significant improvements in Ca absorption were seen with both low and high doses of GOS compared with the control ($P < 0.02$), but it was not a dose–response relationship. The increase in absorption was greatest in the urine collected after 24 h, which is consistent with lower gut absorption. Faecal bifidobacteria increased (control 10.89 (SD 13.86), 5 g GOS 22.80 (SD 15.74) and 10 g GOS 11.54 (SD 14.20)) with the GOS treatment ($P < 0.03$). The results suggest that daily consumption of 5 g GOS increases Ca absorption, which may be mediated by the gut microbiota, specifically bifidobacteria.

Key words: Prebiotic: Calcium absorption: Bifidobacteria: Galacto-oligosaccharides

Prebiotics have become more prevalent in foodstuffs with the growing interest in functional foods and their role in health and disease prevention. Non-digestible oligosaccharides meet the FAO and the WHO definition of a prebiotic⁽¹⁾ as they are thought to influence indigenous bacteria and have beneficial physiological effects, including a role in bone health. Adolescence is an important time period for maximising peak bone mass to prevent the development of osteoporosis later in life. The high bone mineral accrual velocity that occurs during adolescence presents a unique opportunity to influence peak bone mass through modifiable lifestyle factors, such as diet and exercise. Current Ca consumption is well

under the recommended 1300 mg/d for adolescents in the USA⁽²⁾. An alternative approach to improving Ca nutrition is to increase Ca bioavailability. A growing body of literature suggests that non-digestible oligosaccharides, including galacto-oligosaccharides (GOS), have beneficial effects on Ca metabolism and bone health through increasing Ca absorption⁽³⁾.

GOS are non-digestible carbohydrates consisting of chains of galactose with a glucose end piece, varying in chain length from two to eight monomers. They are produced by means of enzymatic conversion of lactose, and are being used on a large scale in infant nutrition, dairy products and

Abbreviations: BMC, bone mineral content; DGGE, denaturing gradient gel electrophoresis; GOS, galacto-oligosaccharides; rRNA, ribosomal RNA.

* **Corresponding author:** C. M. Weaver, fax +1 765 494 0674, email weavercm@purdue.edu

beverages. Other terms being used for GOS are transgalacto-oligosaccharides or β -GOS. GOS are believed to resist digestion, allowing it to be fermented in the large intestine, in particular by bifidobacteria to produce SCFA and decrease pH. In healthy adults, consumption of 10 g/d of GOS for 21 d resulted in significant increases in faecal bifidobacteria content⁽⁴⁾, while *in vitro* work has shown increased production of SCFA in the presence of GOS⁽⁵⁾. Changes in the intestinal surface area have also been associated with prebiotic consumption resulting in caecal hypertrophy^(6,7). In rats fed GOS diets, increased crypt depth and cell density in the proximal and distal colon were observed⁽⁸⁾.

Fermentation may directly increase Ca absorption through hydrogen ion exchange⁽⁹⁾ or indirectly through hypertrophy of the intestinal mucosa to increase the surface area for greater mineral diffusion. Several studies have shown a positive effect of GOS on Ca absorption^(8,10) and bone density^(11,12) in rats. Recently, we have shown that GOS increased Ca absorption and bone mineral density through decreased pH, increased bifidobacteria composition and increases in caecal wall and content weight⁽¹³⁾. Work in human subjects has been scarce with varying results. Supplementation with a gradually increasing dose from 5 to 10 g/d of GOS twice per d for 9 d increased Ca absorption by 16% in postmenopausal women⁽¹⁴⁾. Conversely, a similar study in young men has found no effect of 15 g/d of GOS for 21 d on Ca absorption⁽¹⁵⁾; however, this study did not allow enough gut transit time of the Ca tracer to include colonic absorption. No studies of GOS on Ca absorption have been reported in children and adolescents. Ca absorption fraction is up-regulated during pubertal growth, yet other prebiotics including fructo-oligosaccharides enhance Ca absorption efficiency during this life stage⁽¹⁶⁾.

The aims of the present study were to assess the effect of GOS given in a smoothie drink on Ca absorption in healthy premenarcheal girls, and to evaluate the timing of Ca absorption and changes in gut microbiota to speculate on the mechanism of action. We hypothesised that GOS would increase colonic Ca absorption in a dose–response manner associated with changes in the total number of microbiota and bifidobacteria.

Experimental methods

Subjects

Through local advertising, thirty-one premenarcheal girls between the ages of 10 and 13 years were enrolled in the present study. All subjects were healthy and were not taking any medications that could alter bone and Ca metabolism or gut microbial profiles. Additional inclusion criteria included consuming greater than 700 mg Ca/d as measured with a validated dietary assessment tool. Scores from this FFQ were previously associated with total hip bone mineral content (BMC) and femoral neck BMC after adjustment for covariates⁽¹⁷⁾. Dietary assessment tool scores measured at baseline were also predictive of BMC after 12 months⁽¹⁷⁾. Exclusion criteria included disordered Ca or bone homeostasis, BMI greater than the 90th percentile for age, smoking or drug use, autoimmune or inflammatory gastrointestinal diseases, broken bone within

last 6 months, disease affecting kidney function, dislike of smoothie drinks and regular consumption of foods containing prebiotics or probiotics. Subjects were asked to discontinue the use of vitamin and mineral supplements before consuming the smoothies and while participating in the study. They were also asked to avoid consuming products that contained probiotics and/or prebiotics over the course of the intervention. The present study was conducted according to the guidelines laid down in the Declaration of Helsinki, and all procedures involving human subjects were approved by the Institutional Review Board of Purdue University. Written informed consent was obtained from all subjects. The study was registered at ClinicalTrials.gov (ID: NCT01263847).

Study design

The present study was a randomised, double-blind cross-over trial with three treatments. Treatments consisted of smoothie drinks supplemented with 0, 2.5 or 5 g GOS (Vivinal[®] GOS Syrup containing 59% GOS (percentage of DM); see Table 1 for the typical composition of Vivinal[®] GOS; FrieslandCampina Domo) that were consumed twice per d, amounting to total GOS intakes of 0, 5 and 10 g/d.

Smoothie drinks (International Food Network Inc.) (see Table 2 for composition of smoothies) were consumed at breakfast and dinner for 3 weeks, followed by a clinical visit at Purdue which included a controlled diet, Ca absorption test, collection of all excreta and a breath test to identify methane producers, who lack or have a lower number of sulphate-reducing bacteria compared with non-methanogenic individuals⁽¹⁸⁾. Each phase was separated by a 2-week period to washout any effect of the intervention on gut colonisation. A baseline blood sample was taken at the start of the study to assess markers of health including Hb, haematocrit, C-reactive protein, serum Zn, Fe-soluble transferrin receptor and serum ferritin levels. Anthropometric measurements, bone strength measures by peripheral quantitative computer tomography and physical fitness assessments were also performed during one of the three treatment periods in order to check whether the children had normal bone characteristics based on a sex-specific reference. Clinical visits occurred Friday evening through Sunday night, during which time subjects were accommodated in either a Purdue University residence hall or a local hotel.

Diets

During the clinical visit, subjects were provided with controlled diets containing approximately 700 mg Ca plus the

Table 1. Typical composition of Vivinal[®] GOS Syrup

Formula components	DM (%)
Galacto-oligosaccharides	59
Lactose	21
Glucose	19
Galactose	1
DM	75

Table 2. Composition of smoothie drinks (%)

Ingredients	0 g GOS	2.5 g GOS	5.0 g GOS
Whole milk	59	59	59
Water	2.2	3.0	3.4
Pectin slurry*	13.1	13.4	13.7
Sucrose	3.0	3.0	3.0
Maize syrup	18.5	11.5	5.0
GOS syrup (Vivinal® GOS)†	0.0	5.9	11.7
Ca	2.9	2.9	2.9
Citric acid	0.9	0.9	0.9
Strawberry flavour and red colour	0.4	0.4	0.4
Total	100	100	100

GOS, galacto-oligosaccharides.

* Pectin slurry in each smoothie contained 2.6, 3 and 3.2% sucrose and 3.45, 3.35 and 3.30% pectin in 0, 2.5 and 5 g GOS smoothies, respectively.

† Confirmed by analyses with high-performance anion exchange chromatography with pulsed amperometric detection⁽⁶⁵⁾.

two smoothies with 300 mg Ca each (total Ca in the diet approximately 1300 mg/d). The diets were also controlled for fibre content, providing 15 g dietary fibre/d (with the exception of the prebiotics). Energy needs were calculated at baseline and were kept equal during the three clinical visits. Calculations were based on estimated resting and moderate activity energy expenditures using the Harris–Benedict equation⁽¹⁹⁾. During one washout period between the treatments, subjects were asked to complete a 6 d diet record to calculate habitual macro- and micronutrient intakes.

Bone health assessment

Baseline bone strength parameters were assessed on each subject using a series of peripheral quantitative computer tomography (XCT-2000; Stratec Medizintechnik GmbH) scans of the tibia and radius. In total, three sites were scanned on the tibia (4, 38 and 66%) in addition to the 4 and 20% sites on the radius. Non-dominant arms and legs were measured unless the subject had experienced a fracture in that limb (one participant had experienced a fracture in her non-dominant arm). Analyses of these scans were used to measure cortical and trabecular bone parameters (total area, bone mineral density, BMC, periosteal and endosteal circumferences). Normalised scores were calculated based on bone geometric parameters at the distal radius measured in 629 Caucasian males and females between the ages of 5 and 25 years using lambda, mu, sigma techniques⁽²⁰⁾.

Compliance

A total of forty-two smoothie drinks (two smoothies per d for 3 weeks) were provided to the subjects during each of the three study phases, and subjects were asked to return unopened drinks at the start of each clinical visit. Compliance of smoothie consumption was measured with compliance calendars and confirmed by counting the number of unopened smoothie bottles returned at each clinical visit. To complete the calendars, subjects were asked to place a sticker on a calendar for each smoothie they consumed. Collection of urine and faecal samples was monitored at all times throughout the clinical visit by research personnel. Staff accompanied

participants to the restroom to assure that samples were collected and labelled appropriately. The counsellor:participant ratio was 1:3.

Fractional calcium absorption

Following an overnight fast, participants provided a rising urine collection, followed by a fasting collection, on Saturday morning. After these initial urine collections, a stable Ca isotope, ⁴⁴Ca (15 mg), was given orally with a standardised breakfast meal that provided a total of 300 mg Ca. ⁴⁴CaCl₂ was added to the smoothies for each treatment and allowed to equilibrate overnight before consumption. A second stable isotope, ⁴³Ca (3.5 mg) as ⁴³CaCl₂, was given intravenously 1 h after the oral isotope. All urine samples were collected over the 48 h following isotope administration.

Urine samples were combined to form four 12 h urine aliquots (0–12, 12–24, 24–36 and 36–48 h). Urine samples were analysed for ⁴⁴Ca and ⁴³Ca enrichment by measuring isotope ratios (⁴⁴Ca:⁴²Ca and ⁴³Ca:⁴²Ca) via inductively coupled plasma MS (inductively coupled plasma-MS, Finnegan Element2; Thermo Scientific) and total Ca using atomic absorption spectrometry (AAS, AAnalyst 300; Perkin-Elmer) as described previously⁽²¹⁾. Ca absorption was calculated using enrichment values to calculate the Δ excess for ⁴⁴Ca and ⁴³Ca as a ratio of ⁴⁴Ca:⁴³Ca after accounting for natural abundance and doses given. The equation for fractional Ca absorption for each 12 h urine aliquot is shown below.

Fractional Ca absorption =

$$\left(\left[\left(\frac{{}^{44}\text{Ca}/{}^{42}\text{Ca} \Delta \text{excess}}{{}^{43}\text{Ca}/{}^{42}\text{Ca} \Delta \text{excess}} \right) \times \left(\frac{0.02083}{0.00135} \right) \right] \times \left[\frac{\text{intravenous dose}}{\text{oral dose}} \right] \right)$$

Kinetic modelling was used to calculate total Ca absorption over the 48 h treatment period for subjects where all data time points were collected (*n* 15, 15 and 16 for 0, 5 and 10 g GOS, respectively). Tracer ratios were converted to the percentage of the dose given, and the tracer in the urine as well as total Ca in the urine were fitted by a three-compartment model using the WINSAM program and average parameter values for teen girls⁽²²⁾. Parameters for absorption, excretion and exchange between the compartments were allowed to adjust for each subject so that the model fitted data for each subject.

Methane production

Only 30–50% of Western populations produce methane^(23–25). Methane producers have little to no sulphate-reducing bacteria. It was found that these bacteria have a greater metabolic diversity and capacity when compared with methanogenic bacteria, leading to differences in the turnover of fatty acids in the colon⁽¹⁸⁾. We hypothesised that those children who are identified as methane producers may show a higher GOS-induced enhancement of Ca absorption, possibly due to higher SCFA metabolism within the colon. During each clinical visit, subjects were asked to

exhale into a Quin Tron™ sample bag (QuinTron Instrument Company) at least 2 h after consuming a meal. This test was performed during each clinical visit to assure that the results were accurate, as participants sometimes had difficulties breathing into the bags correctly. Breath samples were then analysed for methane content using a Quin Tron™ Breath Analyzer (QuinTron Instrument Company). The threshold to identify methane production was >1 parts per million and participants were identified as methane producers when methane was detected in breath samples during two or more of the three clinical visits.

Weekly self-reported gastrointestinal symptoms

During each 3-week GOS intervention, subjects were asked to complete a weekly symptom survey over the phone. Data collected from these surveys included free-response answers and rankings on a scale of 0–5 (0 = absent or no symptom; 5 = severe occurrence of symptom) for the following symptoms associated with dietary fibre consumption: abdominal pain, bloating, flatulence, diarrhoea, bowel movement frequency and bowel movement consistency.

DNA extraction

Community DNA was extracted from all faecal samples collected from the subjects during their clinical visit to Purdue at the end of each of the three different GOS treatment tests. Subjects who did not defecate during any of their clinical visits were excluded from this part of the study. In total, faecal samples were collected from twenty-three subjects for DNA extraction. Subjects also collected faecal samples at home (labelled N) before beginning their first treatment. Subjects stored the baseline samples in their freezers until research personnel were notified to pick up and transport the samples to the clinical facility where they were stored in a freezer until processed. Extractions were done using the FastDNA Spin Kit for Soil (MP Biomedicals) adapted for human faecal samples as described previously⁽²⁶⁾. DNA quality and quantity was assessed using a NanoDrop 1000 spectrophotometer and NanoDrop 3000 fluorospectrometer (Thermo Scientific), respectively.

PCR–denaturing gradient gel electrophoresis

DNA was used to compare the bacterial communities between subjects by means of 16S ribosomal RNA (rRNA) gene PCR–denaturing gradient gel electrophoresis (DGGE), as described in detail previously⁽¹³⁾. The 16S rRNA gene was amplified by bacterial primers PRBA338F with a GC clamp and PRUN518R^(27,28). Agarose gel electrophoresis was used to determine the quality and quantity of PCR products before loading in equivalent quantities in DGGE gels. DGGE (DCode™ Universal Mutation Detection System; Bio-Rad Laboratories) was performed using 8% (w/v) polyacrylamide gels (40% acrylamide–bis solution, 37.5:1) in 1× Tris–acetate–EDTA (TAE) buffer with denaturing gradients (30–50, 35–55 and 45–65%). Then, three different gradients were used for

bacterial community analysis of each sample to optimise band separation to facilitate profile comparisons. All gels included DGGE band migration markers, made from rRNA gene PCR products from individual microbes, to aid in between-gel comparisons. Electrophoresis was initiated at 15 V for 10 min and then increased to 200 V for 5 h. Electrophoresis buffer (1 × TAE) was maintained at 60°C throughout. Gels were stained using SYBR Green I (Cambrex Bio Science), visualised on a UV transilluminator and photographed (UVP BioImaging system; UVP LLC).

Quantitative PCR

Quantitative PCR was performed using bifidobacteria and bacteria-specific primer sets using a My iQ thermal cycler (Bio-Rad), as described previously⁽¹³⁾. Bacterial 16S rRNA gene copy number assessment was performed as described for PCR–DGGE previously with the exception that the GC clamp was excluded from the primer. For bifidobacteria quantification, the primers Bif164F and Bif662R⁽²⁹⁾ were used and annealing was performed at 62°C, otherwise all conditions were the same as those used for bacteria. Quantitative PCR of each sample was performed in triplicate using the iQ SYBR Green Supermix (Bio-Rad) and 1 ng of template DNA. Positive controls and standard curves for quantification were made from the 16S rRNA gene of *Bifidobacterium bifidum* cloned into the pGEM-T easy vector (Promega). Standard curves were generated from 10-fold serial dilutions of plasmid DNA. Gene copy numbers were calculated based on total DNA and the percentage of bifidobacteria gene copies in total bacteria.

Statistical analysis

Statistical analysis was performed using SAS version 9.2 (SAS Institute). To understand the GOS effects on Ca absorption over time, a general linear model based on the following parameters was used: sequence, participant identifier (ID) nested within sequence, treatment, time and phase. ID nested within sequence was treated as a random variable with ID representing the subjects unique identifier and sequence, the order in which treatments were received. Variables were assessed for potential interactions including time × treatment and sequence × treatment interactions. The time × treatment interaction term in our general linear model was not significant; therefore, conclusions made about treatment differences apply equally to all time periods. Similarly, the interaction between sequence and treatment was also not significant. Group mean differences were determined using least significant difference *post hoc* comparisons when a variable was significant in the model. The sample size of twenty-three was calculated with an α error of 0.05 and 80% power to detect a difference in Ca absorption of 5.9%, assuming a standard deviation of 2.9 (SD 9.6)%⁽³⁰⁾.

To explore the effects of usual Ca absorption on the response to GOS, Pearson's correlations were used to evaluate correlations between the change in fractional Ca absorption on 5 or 10 g/d of GOS from control and fractional Ca absorption during the control period. Correlations were observed

when all data were combined together and individually by urine collection time point.

Digital gel images were analysed and PCR-DGGE fingerprint profiles compared using BioNumerics software (version 5.01; Applied Maths). Gels were scored for the presence or absence of DNA bands and all scores from different gradients were combined using the composite dataset function in BioNumerics (Applied Maths) to make a complete profile. Only bands with intensities of 3% or more were scored as present. DNA banding patterns were compared using Dice similarity indices to identify major contributors to the variation in fingerprints. Quantitative PCR results for bifidobacteria were compared independent of fractional absorption to look for treatment effects. This separate analysis was needed because faecal samples could not be collected in 12 h time intervals like urine. A general linear model including sequence, ID nested within sequence, treatment and phase was used for this analysis.

Data were removed from analyses in the event of antibiotic use, fractional Ca absorption resulting in values <0 or >1.0 for specific 12 h urine samples and non-compliant sample collection. In the event of antibiotic use, subject data were excluded for the phase during which antibiotics were prescribed as well as the following phase to account for any residual effects on faecal bacteria. Statistical significance was set at $P < 0.05$.

Results

A total of thirty-one healthy girls participated in the present study (Fig. 1). Of these, six subjects withdrew from the study (four were lost before treatment randomisation and two dropped out after the second treatment phase). Physical and clinical health characteristics of these participants were within normal ranges (Table 3).

Habitual dietary intakes

Diet records showed that participants habitually consumed approximately 1010 mg/d Ca and 13.8 (SD 7.4) g/d dietary fibre (Table 4). Habitual Ca intakes fell below the RDA of 1300 mg/d, but were higher than intakes reported from National Health and Nutrition Examination Survey (NHANES) data (988.6 (SD 47.1) mg/d) for girls 9–13 years of age⁽²⁾.

Fracture history and peripheral quantitative computer tomography

Of the study subjects, nine reported a fracture history during screening, having incurred one or more fractures >6 months before the study. Table 3 summarises bone density results of the distal radius, measured by peripheral quantitative computer tomography. The mean radius total density and trabecular density, for which there are reference data, were within the normal range based on sex-specific reference centile curves for age and height. The ranges in z -scores for total density and trabecular density of the radius were -2.2 to 2.5 and -0.2 to 3.7 , respectively.

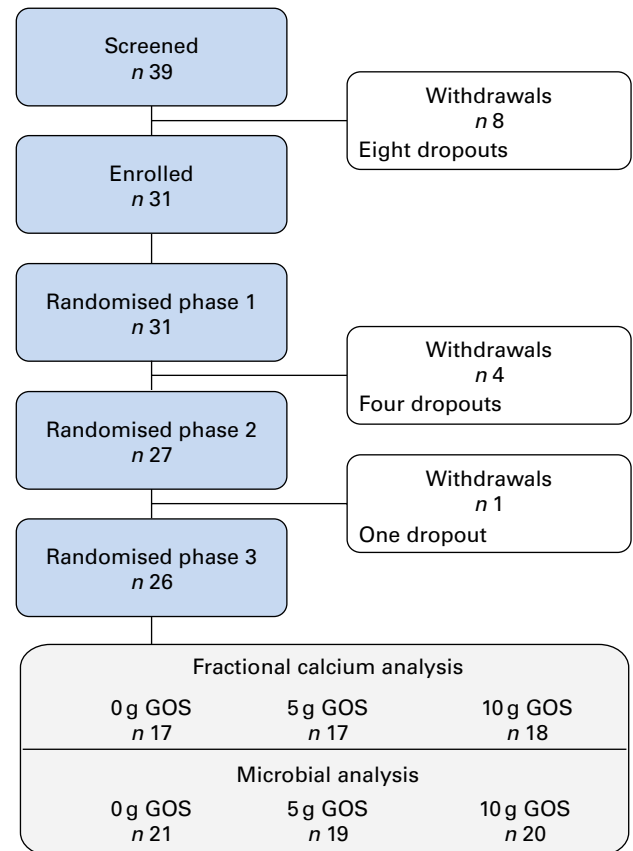


Fig. 1. Flow of participants through each phase of the study. Fractional calcium analysis: variation in the number of subjects is due to the omission of data from phases in which participants were non-compliant, taking antibiotics (subject data were excluded for the phase during which antibiotics were prescribed as well as the following phase to account for residual effects) or if calculated fractional calcium absorption was >1.00 . Microbial analysis: difference in the final number of subjects due to non-compliant faecal sample collection. GOS, galacto-oligosaccharides. (A colour version of this figure can be found online at <http://www.journals.cambridge.org/bjn>.)

Self-reported gastrointestinal symptoms

Mean scores for abdominal pain, bloating, flatulence and diarrhoea were all below 1, which represented hardly any gastrointestinal symptom (Fig. 2). There were no significant differences among the groups receiving 0, 5 or 10 g/d of GOS, for any of these symptoms. Bowel movement frequency was reported as every other day to once per d for all treatment groups and did not change with weekly surveys. Mean bowel movement consistency was reported normal across all the three phases with no differences across the 3 weeks of each treatment period.

Methane producers

Of the study participants, eight were confirmed as methane producers with a methane threshold >1 parts per million. χ^2 analysis indicated that the GOS-induced increase or decrease of fractional Ca absorption was not related to the methane status ($P = 0.71$).

Table 3. Baseline anthropometric and biochemical characteristics of the participants

 (Mean values and standard deviations, *n* 31)

Characteristics	Mean	SD
Age (years)	11.7	1.0
Height (cm)	151.1	9.1
Weight (kg)	43.6	9.9
BMI (kg/m ²)	18.9	2.6
BMI for age, percentile	57.3	24.3
Soluble transferrin receptor* (nmol/l)	19.4	3.6
C-reactive protein* (mg/l)	0.5	1.0
Ferritin* (ng/ml)	27.7	14.2
Hb* (g/l)	134	6.0
Haematocrit* (%)	39.6	1.8
Serum Zn* (µg/l)	827	169
4 % Radius, total area (mm ²)	231.5	59.2
4 % Radius, total BMC (mg/mm)	64.7	12.8
4 % Radius, total BMD (mg/cm ³)	285.4	45.0
4 % Radius, cortical thickness (mm)	1.4	0.2
4 % Tibia, total area (mm ²)	734.0	144.7
4 % Tibia, total BMC (mg/mm)	203.5	41.0
4 % Tibia, total BMD (mg/cm ³)	278.5	30.5
4 % Tibia, cortical thickness (mm)	1.9	0.1

BMD, bone mineral density.

* Reference ranges: soluble transferrin receptor, 8.8–28.1 nmol/l; C-reactive protein, 0.0–4.0 mg/l; ferritin, 10.0–291.0 ng/ml; Hb, 120–150 g/l; haematocrit, 35.0–45.0%; serum Zn, 700–1500 µg/l.

Fractional calcium absorption

Fractional Ca absorption data, determined in four consecutive 12 h urine aliquots, suggested a significant ($P=0.0132$) treatment effect (Table 5). Over all time points, 5 and 10 g GOS/d had significantly greater effects on fractional Ca absorption, but the response was not dose-dependent. Three-compartment kinetic modelling resulted in mean fractional Ca absorption over the 48 h test period for control, 5 and 10 g GOS of 0.393 (SD 0.092), 0.444 (SD 0.086) and 0.419 (SD 0.099), respectively. In turn, the improvements to fractional Ca absorption with the 5 g and 10 g treatments accounted for increases of 13.0 and 6.6%. Linear analysis also revealed a significant time effect ($P<0.0001$) for fractional Ca absorption (Fig. 3). Ca absorption peaked in the 24–36 h urine aliquot, resulting in significantly greater absorption than the earlier time points. Fractional Ca absorption remained elevated in the final urine aliquot (36–48 h), but did not differ significantly from the 24–36 h aliquot. Urinary total Ca excretion was unaffected by the presence of GOS (Table 5).

Microbial analysis and bacterial community

There were only twenty subjects included in the microbial analysis section because some subjects did not produce any faecal samples during the clinic visits or they were taking antibiotics. Of these twenty subjects, all but one submitted a faecal sample before the start of the study treatments (N). This subject was kept in the present analysis. During the clinic visit, the number of samples collected from each subject for each treatment varied from one to three, and the total number of samples available for microbiota analysis varied

from three to eight per subject across all treatments and baseline.

PCR-DGGE profiles from twenty adolescent girls were produced from samples collected before (N) and after 3 weeks of consuming the GOS treatments (0, 5 and 10 g/d) using 16S rRNA gene universal primers. Regardless of the treatment, the number of bands in a faecal bacterial community profile was similar, ranging from 16 to 35 (Table 6). There was no significant difference in average band numbers in profiles from subjects after they consumed the different GOS treatments, indicating that total dominant bacterial population numbers within communities were not influenced by GOS.

Similarities between fingerprint profiles within and between the subjects are illustrated in the dendrogram (using UPGMA; Unweighted Pair Group Method with Arithmetic Mean) of Dice similarity values (Fig. 4). A comparison of PCR-DGGE profiles from all subjects indicates that there is more similarity within each individual than by treatments (Fig. 4). Although specific bands distinguished treatments within an individual, these bands were not common to all subjects undergoing similar GOS treatments.

Dice similarity values between subjects typically ranged from 15 to 87% after the treatment and 19 to 74% before starting any treatment. Dice similarity values within subjects typically ranged from 55 to 100%, with the exception of one subject showing a similarity of 34%. In addition, the UPGMA clustering of the PCR-DGGE profiles within each subject indicated that the patterns were grouped by treatment (Fig. 4). This trend was seen in all the subjects examined.

Bifidobacteria quantification

Quantitative PCR using bifidobacteria-specific primers indicated that all subjects in the present study contained detectable levels of this bacterial group before and after the dietary treatment. After the dietary intervention, significant increases in bifidobacteria occurred (Table 7). The change in bifidobacteria, independent of the unit used, was significantly greater in subjects consuming the 5 g/d of GOS treatment compared with the control and 10 g/d of GOS treatments. The total bacterial copies were only significantly different when expressed as copies/ng faeces ($P=0.0043$) with the 5 g/d of GOS treatment resulting in greater amounts than the 10 g GOS and control treatments.

Table 4. Habitual dietary intakes of participants from 6 d diet records*

(Mean values and standard deviations; minimum and maximum values)

	Mean	SD	Minimum	Maximum
Energy intake (kJ/d)†	8155	2920	1121	17 443
Ca intake (mg/d)†	1010	260	461	1552
Dietary fibre intake (g/d)†	13.8	7.4	0.7	43.2
Soluble fibre (g/d)†	4.5	3.1	0.3	24.8
Insoluble fibre (g/d)†	9.2	5.1	0.4	30.8

 * Only values for individuals who completed the 6 d diet record were included (*n* 27).

† Average intake was estimated by averaging daily values from the 6 d diet record.

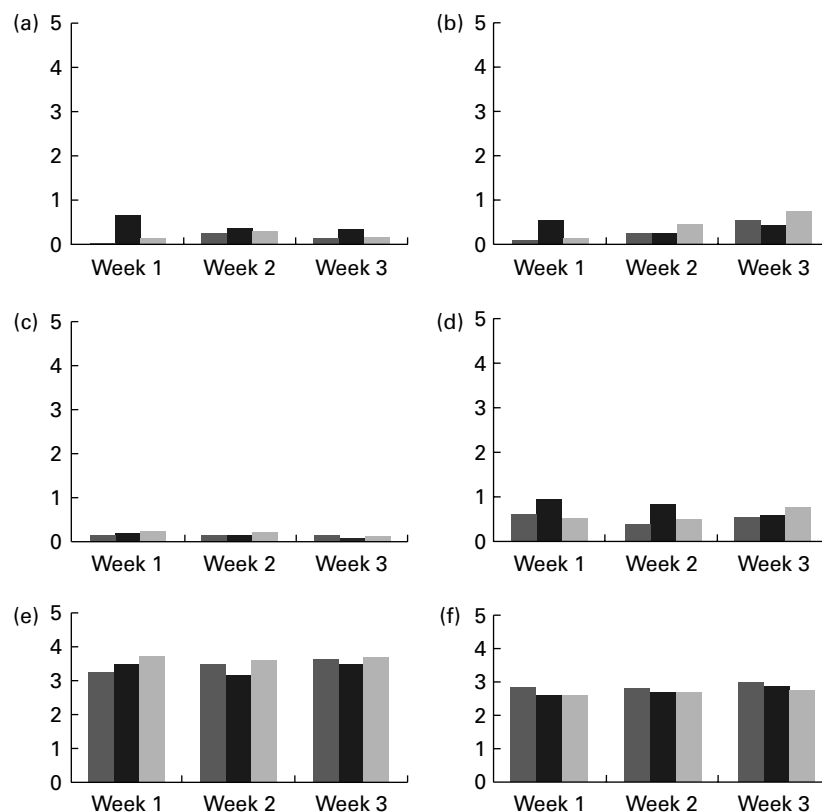


Fig. 2. Self-reported mean gastrointestinal symptoms collected from weekly surveys. (a) Bloating, (b) abdominal pain, (c) diarrhoea, (d) flatulence, (e) bowel movement frequency and (f) bowel movement consistency. Scoring key for (a)–(d): 0, none; 1, slight; 2, mild; 3, moderate; 4, moderately severe; 5, severe. Frequency scoring key for (e) and (f): 0, no bowel movement; 1, once/week; 2, twice/week; 3, every other day; 4, once/d; 5, more than once/d. Consistency key for (e) and (f): 0, diarrhea; 1, soft, semi-solid; 2, soft, solid; 3, normal; 4, hard but passes easily; 5, hard with constipation. ■, 0 g GOS; ■, 5 g GOS; ■, 10 g GOS.

Determinants of calcium absorption

Over all time points, the difference in fractional Ca absorption between the GOS and control treatments was inversely correlated with fractional Ca absorption during the control period ($r = 0.51$, $P < 0.0001$). Fractional Ca absorption on the control was significantly correlated with fractional Ca absorption response to 5 g/d of GOS at 12 h ($r = 0.65$, $P = 0.03$), 24 h

($r = 0.70$, $P = 0.02$) and 48 h ($r = 0.66$, $P = 0.03$) (Table 8) but not for the fractional Ca absorption response to 10 g/d of GOS.

Discussion

Adaptation to GOS supplementation for 3 weeks significantly affected Ca absorption and faecal microbe profiles in pre-adolescent girls habitually consuming at or near the daily

Table 5. Comparison of mean calcium absorption from the general linear model evaluating all 12 h urine aliquots together* (Mean values and standard deviations)

Outcome measure	Time (h)	0 g GOS/d			5 g GOS/d			10 g GOS/d			<i>P</i> (treatment effect)
		<i>n</i>	Mean	SD	<i>n</i>	Mean	SD	<i>n</i>	Mean	SD	
Fractional Ca absorption	12	17	0.31	0.08	17	0.35	0.07	18	0.34	0.08	0 g < 5 g, 10 g 0.0132
	24	17	0.39	0.08	17	0.44	0.08	18	0.42	0.13	
	36	17	0.43	0.12	16	0.46	0.09	18	0.44	0.13	
	48	17	0.41	0.08	16	0.43	0.09	18	0.41	0.14	
Urinary Ca excretion (mg/12 h)	12	17	40	29	17	36	28	18	40	24	0.2506
	24	17	39	19	17	34	25	18	42	21	
	36	16	35	20	16	32	22	18	37	18	
	48	17	40	25	17	35	29	18	44	18	

GOS, galacto-oligosaccharides.

* Urine sample aliquots are 12 (0–12), 24 (12–24), 36 (24–36) and 48 (36–48) h. Four subjects were treated with antibiotics during phase 2. Data from phase 2 and phase 3 were excluded from the analysis for these participants. Phases where subjects were non-compliant, measured by urine creatinine levels, were excluded from the analysis. Six subjects were excluded for non-compliance measured by urine creatinine. Two specific time points were excluded from the analysis for individual subjects when fractional absorption values were physiologically implausible (fractional absorption that was negative or greater than 1.00).

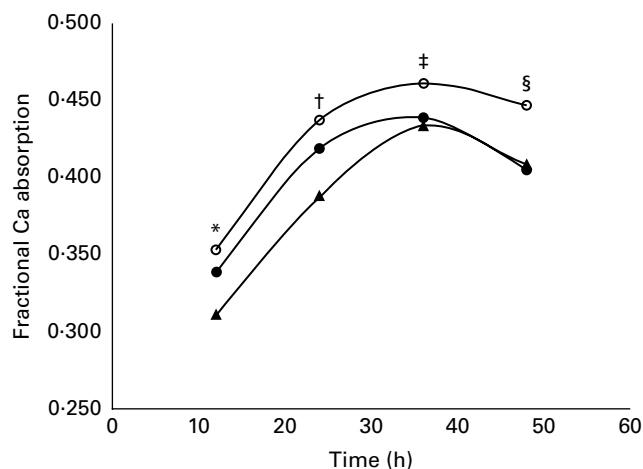


Fig. 3. Effect of time on mean fractional calcium absorption measured in 12 h urine aliquots. Girls treated twice daily with 2.5 g galacto-oligosaccharides (GOS, 5 g, ○—); girls treated twice daily with 5 g GOS (10 g, ●—); girls treated twice daily with 0 g GOS (0 g, ▲—). General linear analysis was used to assess the effect of time on fractional calcium absorption ($P < 0.0001$) and least significant difference *post hoc* comparisons were used to compare differences in fractional calcium absorption by time point (time effect for all treatments: * 12 h, † 24 h, ‡ 36 h, § 48 h; $P < 0.05$).

recommended Ca intake. There was no dose–response effect; treatment with 5 g/d of GOS elicited maximal benefit on fractional Ca absorption and bifidobacteria levels in the lower gut.

Calcium absorption

We observed a significant increase in Ca absorption with the consumption of 5 g/d of GOS. This suggests that a dose of 5 g GOS/d may be more effective at increasing Ca absorption in growing, pre-menarcheal girls than 10 g/d of GOS.

Mean fractional Ca absorption values from our model that used all time points for the control, 5 and 10 g/d of GOS treatments were 0.393 (SD 0.092), 0.444 (SD 0.086) and 0.419 (SD 0.099), respectively. The benefit of treatment with 5 and 10 g/d of GOS was 13.0 and 6.6%, respectively. This is of similar magnitude to the 8.3% increase in fractional Ca absorption in postmenopausal women consuming 5 g/d of lactulose⁽³¹⁾. This study is the only other study to investigate a dose–response using 5 and 10 g non-digestible oligosaccharide treatments, but unlike the present study in girls, the postmenopausal women consuming 10 g/d of lactulose had an additional 16.2% increase over the 5 g treatment⁽³¹⁾. Whether the lack of a dose–response effect in girls was due to the difference in age of the two study groups or is an anomaly requires further research.

In animals, dose-dependent effects on Ca absorption have been reported for inulin-type fructans⁽⁷⁾, lactulose⁽³²⁾ and galacto-oligosaccharides⁽¹³⁾. Although GOS effects on Ca absorption were not dose-dependent in the present study, data in rats have shown that GOS treatment has positive effects on bone independent of Ca absorption^(11–13). Trabecular-rich bones received the greatest benefit among 4-week-old male rats fed 0–8% GOS through decreased caecal pH, increased caecal wall and content weight, and a greater

proportion of bifidobacteria⁽¹³⁾. In addition, we previously reported that soluble maize fibre and soluble fibre dextrin positively influenced measures of bone geometry and strength in growing rats, independent of changes in Ca absorption⁽³³⁾. Lactulose stimulated Ca absorption in caecectomised rats⁽³²⁾, as the caecum is not essential for the stimulatory effects of vitamin D⁽³⁴⁾. In relation to prebiotics, fructo-oligosaccharide influences Ca absorption in the caecum of rats⁽³⁵⁾, but adaptation to the treatment has been reported in rats after 28–30 d of fructo-oligosaccharide feeding⁽¹⁰⁾, presumably through the down-regulation of the vitamin D endocrine system. Perhaps the independent bone effects seen in rats fed soluble fibres are the result of adaptation of the vitamin D system after 12 weeks of treatment. Effects on bone changes are not available in the present study cohort as bone measures were only assessed at baseline, and longer study duration is necessary to measure changes in human bone, making it difficult to speculate on the skeletal effects of GOS in the present study. Similarly, while vitamin D status did not differ after the treatment, other markers of the vitamin D endocrine system were not assessed.

The measurement of fractional Ca absorption in the urine over 48 h by 12 h urine samples allowed us to determine how absorption was affected by GOS as Ca was transported along the gut. Previous research has suggested that non-digestible oligosaccharides are poorly absorbed in the small intestine and later undergo acidic fermentation in the caecum and colon of rats which improves Ca absorption in the large intestine⁽³⁶⁾. Van den Heuvel *et al.*⁽³⁷⁾ found that a 36 h, rather than 24 h⁽¹⁵⁾, urine collection was necessary to measure this late fraction of absorbed Ca. We observed a peak in fractional Ca absorption in the urine pool collected between 24 and 36 h, which supports lower gut effects.

The approximate 10% increase in absorption with 5 and 10 g/d of GOS in the present study equates to an additional 130 mg/d or 49 g/year of Ca being absorbed and available for deposition into the bone. Assuming that total body Ca in an adult skeleton is about 900 g, the increase we observed with GOS would account for approximately 5.4% of the total skeleton. A long-term intervention reported a 6% increase in Ca absorption in boys and girls consuming 8 g/d of Synergy1[®] (Orafti), which accounted for an additional absorption of 55 mg Ca/d⁽¹⁶⁾. This study also resulted in a 35 g difference in bone mineral content after 1 year.

Table 6. Average number of bands in bacterial PCR–denaturing gradient gel electrophoresis fingerprint profiles before (N) and after the dietary galacto-oligosaccharide treatments (0, 5 and 10 g/d)*

Treatments	Range band number	Average band	
		Number	SD
Baseline (N)	17–33	22.6	3.8
0 g/d	19–35	26.0	3.8
5 g/d	18–32	25.3	3.7
10 g/d	15–33	23.9	4.7

* No significant difference in band numbers ($P > 0.05$).

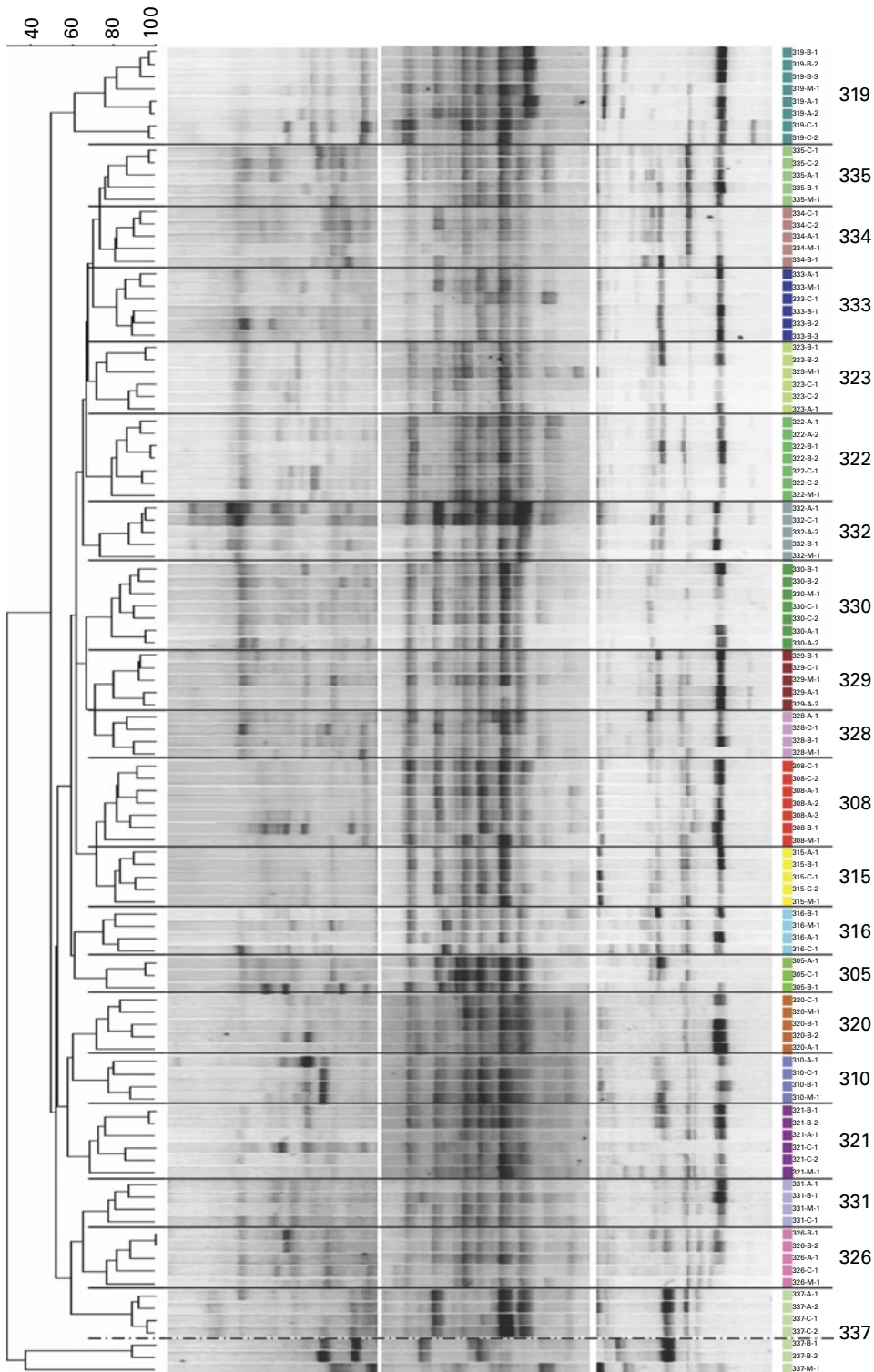


Fig. 4. Dendrogram of the denaturing gradient gel electrophoresis profiles of adolescent girls before (N) and after the three galacto-oligosaccharides treatments (A, 5 g GOS/d; B, 10 g GOS/d; C, control). Cluster analysis (UPGMA) using the Dice similarity index. Profiles were from all faecal samples collected on the last 3 d of each treatment. Bands were separated using the denaturing gradients 35–56 and 25–75%. (A colour version of this figure can be found online at <http://www.journals.cambridge.org/bjn>).

Table 7. Changes in bifidobacteria and total bacteria 16S ribosomal RNA gene copy numbers in subjects after the treatment with galacto-oligosaccharides (GOS)† (Mean values and standard deviations)

Measurement change from baseline	0 g GOS (n 21)		5 g GOS (n 19)		10 g GOS (n 20)		P
	Mean	SD	Mean	SD	Mean	SD	
Bifidobacteria (10 ⁵ copies/ng DNA)	2.19 ^a	3.88	5.05 ^b	4.16	2.68 ^a	3.36	<0.0069
Total bacteria (10 ⁵ copies/ng DNA)	0.96	2.33	1.30	2.11	1.09	2.12	NS*
Bifidobacteria (10 ⁷ copies/mg faeces)	0.49 ^a	3.91	5.17 ^b	4.04	2.57 ^a	3.37	<0.0007
Total bacteria (10 ⁷ copies/mg faeces)	0.91 ^a	2.25	1.33 ^b	2.17	1.05 ^{a,b}	2.18	0.0043
% Bifidobacteria of total bacteria	10.89 ^a	13.86	22.80 ^b	15.74	11.54 ^a	14.20	<0.0272

^{a,b,c} Mean values with unlike superscript letters were significantly different for treatment effects ($P < 0.05$).

* Mean values were not significantly different for treatment effects ($P > 0.05$).

† Comparisons were performed using linear models and *post hoc* *t* test. Quantitative PCR efficiencies >90%, R^2 of standard curves >0.996 with slopes ranging from -3.181 to -3.586.

Mean Ca excretion measured in the 12 h urine aliquots ranged from 32 to 44 mg and was unaffected by treatment ($P = 0.25$). Thus, the increased Ca absorbed is not excreted and should lead to improved Ca retention. In rats, GOS increased Ca absorption dose-dependently, which led to increased Ca retention⁽¹³⁾. In postmenopausal women, Ca excretion was not altered with transgalacto-oligosaccharide intakes of 20⁽¹⁴⁾ or 5 g/d and 10 g/d of lactulose⁽⁵¹⁾. Similarly, no relationship was seen between Ca absorption and urinary Ca excretion in adolescent boys consuming 15 g/d of oligofructose⁽³⁷⁾.

Few studies have investigated Ca absorption in response to modest prebiotic consumption such as the 5 g treatment used in the present study and the lactulose study described above in postmenopausal women⁽⁵¹⁾. Griffin *et al.*⁽³⁸⁾ reported an 18% increase in Ca absorption in 11–14-year-old girls in response to consuming 8 g/d of an inulin–oligofructose mixture. Similarly, Ca absorption in 9–13-year-old girls and boys consuming 8 g/d of a mixed short- and long-chain inulin-type fructan was 8.5% greater than that on the control⁽¹⁶⁾. Conversely, cereal fortified with 9 g/d of oligofructose-enriched inulin as part of a diet containing approximately 1500 mg/d of Ca in 11–13-year-old girls did not increase Ca absorption compared with a cereal without the non-digestible oligosaccharides⁽³⁹⁾. Most studies have used >10 g fibre^(14,15,36,40–45). Fructan fibres have also been proven effective in lower amounts between 1.1 and 1.75 g/d in postmenopausal women and young adults^(46,47). However, these fructans were combined with other possible absorption enhancers such as casein phosphopeptides. Therefore, further study of low prebiotic doses is important to translate to practical levels for consumers.

Gut microbe analysis

Bifidobacteria as a percentage of total bacteria increased with GOS treatment. Others have reported increases in faecal bifidobacteria and *Lactobacillus* species in animal models^(48,49) and human subjects^(50,51) in response to prebiotic consumption generally, and specifically with GOS consumption^(4,13,52,53), and a dose–response effect was observed in both rats⁽¹³⁾ and adult human subjects⁽⁵⁴⁾. Our lack of a dose–response effect of the microbiota to GOS may represent

a difference between adolescents and adults or a spurious observation. A potential threshold effect may also explain the lack of a dose–response where the difference in bifidobacteria proportion between the GOS and control treatments was inversely correlated with bifidobacteria proportions during the control period ($r = -0.54$, $P = 0.0001$). While GOS increased the proportion of bifidobacteria, inverse correlation suggests that individuals with naturally higher quantities of bifidobacteria may only experience an increase up to a certain threshold level.

Determinants of calcium absorption

Few studies have attempted to explore potential determinants of Ca absorption in relation to prebiotic consumption. Using multiple regression analysis, Griffin *et al.*⁽³⁰⁾ found Ca absorption on placebo as the only factor that explained the difference in fractional absorption with Synergy1[®] and placebo. Other factors included in the model, which have known associations with Ca absorption including, weight, height, age, race and Tanner stage, did not explain the beneficial response of Synergy1[®]. This finding is similar to the results from the present study as the fractional absorption response with 5 g/d of GOS was inversely correlated with fractional Ca absorption on control at 12, 24 and 48 h ($r < -0.65$, $P < 0.05$), but not in response to 10 g/d of GOS over all time intervals. No correlations between the benefit of GOS and variables related to diet, anthropometrics, physical fitness and gut bacteria were found; however, this may be due to the small variable ranges and sample size.

Table 8. Galacto-oligosaccharides (GOS) response and fractional calcium absorption correlations*

Urine aliquot	Ca absorption on control			Change in Ca absorption with 5 g GOS/d			Change in Ca absorption with 10 g GOS/d		
	<i>r</i>	<i>P</i>	<i>n</i>	<i>r</i>	<i>P</i>	<i>n</i>	<i>r</i>	<i>P</i>	<i>n</i>
0–12 h urine	-0.65	0.03	11	-0.41	0.19	12			
12–24 h urine	-0.7	0.02	11	-0.4	0.2	12			
24–36 h urine	-0.54	0.11	10	-0.42	0.17	12			
36–48 h urine	-0.66	0.03	11	-0.4	0.2	12			

* Pearson's correlations ($P < 0.05$).

The strengths of the present study included the cross-over design and controlled diets during the assessment of fractional Ca absorption by dual stable isotope techniques. Additionally, product compliance during the present study suggests the ease and feasibility of consuming GOS in daily life. This is especially important because prebiotics only cause transient changes in gut microbiota and therefore Ca absorption also. The high acceptance of GOS in the present study suggests that individuals could easily maintain consumption in the long term to obtain prolonged benefits for bone health. The limitations of the present study include the small sample size. Therefore, it was not possible to further explore the determinants of GOS-induced increases in Ca absorption in a multivariate model. Moreover, the number of faecal samples for microbiota fingerprint profiling was limited due to the shortened clinical visits.

Conclusion

In pre-menarcheal girls, twice daily consumption of GOS had positive, but no dose–response, effects on fractional Ca absorption and gut bifidobacteria. The response to GOS in fractional Ca absorption occurred as late phase absorption between 24 and 36 h, characteristic of lower gut absorption. Supplementation with 5 g/d of GOS improved Ca absorption and may increase peak bone mass accrual during adolescence by influencing microbial communities in the lower gut.

Acknowledgements

The present study was supported by FrieslandCampina, Stationsplein 4, Amersfoort, The Netherlands. The authors' responsibilities were as follows: C. M. Weaver, B. R. M., C. H. N., E. G. H. M. v. d. H., M. H. C. S., G. P. M. and L. D. M. designed the study; C. M. Whisner, B. R. M., C. H. N. and C. M. Weaver carried out the study; C. M. Whisner, B. R. M. and C. H. N. analysed the data; C. M. Whisner, C. M. Weaver and C. H. N. prepared the manuscript; B. R. M. assisted in writing the manuscript. All authors evaluated the manuscript and contributed their comments. E. G. H. M. v. d. H. and M. H. C. S. are employees of FrieslandCampina and C. M. Weaver serves on the Advisory Board of Pharmavite. All other authors have no conflicts of interest.

References

1. Food and Agriculture Organization, World Health Organization (2001) *The Food and Agriculture Organization of the United Nations and the World Health Organization Joint FAO/WHO Expert Consultation on Evaluation of Health and Nutritional Properties of Probiotics in Food Including Powder Milk with Live Lactic Acid Bacteria*. FAO/WHO Report no. 10-1-2001.
2. Bailey RL, Dodd KW, Goldman JA, *et al.* (2010) Estimation of total usual calcium and vitamin D intakes in the United States. *J Nutr* **140**, 817–822.
3. Park CY & Weaver CM (2011) Calcium and bone health: influence of prebiotics. *Funct Food Rev* **3**, 62–72.
4. Bouhnik Y, Flourie B, D'Agay-Abensour L, *et al.* (1997) Administration of transgalacto-oligosaccharides increases fecal bifidobacteria and modifies colonic fermentation metabolism in healthy humans. *J Nutr* **127**, 444–448.
5. Durand M, Cordelet C, Hannequart G, *et al.* (1992) *In vitro* fermentation of a galacto-oligosaccharide by human bacteria in continuous culture. *Proc Nutr Soc* **51**, 6A.
6. Rémésy C, Levrat MA, Gamet L, *et al.* (1993) Cecal fermentations in rats fed oligosaccharides (inulin) are modulated by dietary calcium level. *Am J Physiol* **264**, G855–G862.
7. Levrat MA, Rémésy C & Demigné C (1991) High propionic acid fermentations and mineral accumulation in the cecum of rats adapted to different levels of inulin. *J Nutr* **121**, 1730–1737.
8. Pérez-Conesa D, López G & Ros G (2007) Effects of probiotic, prebiotic and symbiotic follow-up infant formulas on large intestine morphology and bone mineralization in rats. *J Sci Food Agric* **87**, 1059–1068.
9. Rashka L & Daniel H (2005) Diet composition and age determine the effects of inulin-type fructans on intestinal calcium absorption in rat. *Eur J Nutr* **44**, 360–364.
10. Pérez-Conesa D, López G, Abellán P, *et al.* (2006) Bioavailability of calcium, magnesium and phosphorus in rats fed probiotic, prebiotic and symbiotic powder follow-up infant formulas and their effect on physiological and nutritional parameters. *J Sci Food Agric* **86**, 2327–2336.
11. Chonan O, Matsumoto K & Watanuki M (1995) Effects of galactooligosaccharides on calcium absorption and preventing bone loss in ovariectomized rats. *Biosci Biotechnol Biochem* **59**, 236–239.
12. Chonan O & Watanuki M (1996) The effect of 6'-galactooligosaccharides on bone mineralization of rats adapted to different levels of dietary calcium. *Int J Vitam Nutr Res* **66**, 244–249.
13. Weaver CM, Martin BR, Nakatsu CH, *et al.* (2011) Galactooligosaccharides improve mineral absorption and bone properties in growing rats through gut fermentation. *J Agric Food Chem* **59**, 6501–6510.
14. van den Heuvel EG, Schoterman MH & Muijs T (2000) Transgalacto-oligosaccharides stimulate calcium absorption in postmenopausal women. *J Nutr* **130**, 2938–2942.
15. van den Heuvel EGHM, Schaafsma G, Muijs T, *et al.* (1998) Non-digestible oligosaccharides do not affect calcium and non-heme iron absorption in young healthy men. *Am J Clin Nutr* **67**, 445–452.
16. Abrams SA, Griffin IJ, Hawthorne KM, *et al.* (2005) A combination of prebiotic short- and long-chain inulin-type fructans enhances calcium absorption and bone mineralization in young adults. *Am J Clin Nutr* **82**, 471–476.
17. Yang YJ, Martin BR & Boushey CJ (2010) Development and evaluation of a brief calcium assessment tool for adolescents. *J Am Diet Assoc* **110**, 111–115.
18. Gibson GR, Macfarlane S & Macfarlane GT (1993) Metabolic interactions involving sulphate-reducing and methanogenic bacteria in the human large intestine. *FEMS Microbiol Ecol* **12**, 117–125.
19. Harris J & Benedict F (1919) *A Biometric Study of Basal Metabolism in Man*. Washington, DC: Carnegie Institute of Washington.
20. Ashby RL, Ward KA, Roberts SA, *et al.* (2009) A reference database for the Stratec XCT-2000 peripheral quantitative computed tomography (pQCT) scanner in healthy children and young adults aged 6–19 years. *Osteoporos Int* **20**, 1337–1346.
21. Weaver CM, Rothwell AP & Wood KV (2006) Measuring calcium absorption and utilization in humans. *Curr Opin Clin Nutr Metab Care* **9**, 568–574.

22. Wastney ME, Ng J, Smith D, *et al.* (1996) Differences in calcium kinetics between adolescent girls and young women. *Am J Physiol* **271**, R208–R216.
23. McKay LF, Eastwood MA & Brydon WG (1985) Methane excretion in man – a study of breath, flatus, and faeces. *Gut* **26**, 69–74.
24. Pitt P, De Bruijn KM, Beeching MF, *et al.* (1980) Studies on breath methane: the effect of ethnic origins and lactulose. *Gut* **21**, 951–959.
25. Bond JH Jr, Engel RR & Levitt MD (1971) Factors influencing pulmonary methane excretion in man. *J Exp Med* **133**, 572–588.
26. Ariefdjohan MW, Savaiano DA & Nakatsu CH (2010) Optimization of DNA extraction kits for PCR-DGGE analysis of human intestinal microbial communities from fecal specimens. *Nutr J* **9**, 23.
27. Lane DJ (1991) 16S/23S rRNA Sequencing. In *Nucleic Acid Techniques in Bacterial Systematics*, pp. 115–175 [E Stackebrandt and M Goodfellow, editors]. New York: John Wiley & Sons.
28. Muyzer G, de Waal EC & Uitterlinden AG (1993) Profiling of complex microbial populations by denaturing gradient gel electrophoresis analysis of polymerase chain reaction-amplified genes coding for 16S rRNA. *Appl Environ Microbiol* **59**, 695–700.
29. Satokari RM, Vaughan EE, Akkermans ADL, *et al.* (2001) Bifidobacterial diversity in human feces detected by genus-specific PCR and denaturing gradient gel electrophoresis. *Appl Environ Microbiol* **67**, 504–513.
30. Griffin IJ, Hicks PMD, Heaney RP, *et al.* (2003) Enriched chicory inulin increases calcium absorption in girls with lower calcium absorption. *Nutr Res* **23**, 901–909.
31. Van den Heuvel EGHM, Muijs T, van Dokkum W, *et al.* (1999) Lactulose stimulates calcium absorption in postmenopausal women. *J Bone Miner Res* **14**, 1211–1216.
32. Brommage R, Binacua C, Antille S, *et al.* (1993) Intestinal calcium absorption in rats is stimulated by dietary lactulose and other resistant sugars. *J Nutr* **123**, 2186–2194.
33. Weaver CM, Martin BR, Story JA, *et al.* (2010) Novel fibers increase bone calcium content and strength beyond efficiency of large intestine fermentation. *J Agric Food Chem* **58**, 8952–8957.
34. Brommage R, Binacua C & Carrié AL (1995) The cecum does not participate in the stimulation of intestinal calcium absorption by calcitriol. *J Steroid Biochem Mol Biol* **54**, 71–73.
35. Ohta A, Ohtuki M, Takizawa T, *et al.* (1994) Effects of fructooligosaccharides on the absorption of magnesium and calcium by cecectomized rats. *Int J Vitam Nutr Res* **64**, 316–323.
36. Younes H, Coudray C, Bellanger J, *et al.* (2001) Effects of two fermentable carbohydrates (inulin and resistant starch) and their combination on calcium and magnesium balance in rats. *Br J Nutr* **86**, 479–485.
37. Van den Heuvel EGHM, Muys T, van Dokkum W, *et al.* (1999) Oligofructose stimulates calcium absorption in adolescents. *Am J Clin Nutr* **69**, 544–548.
38. Griffin IJ, Davila PM & Abrams SA (2002) Non-digestible oligosaccharides and calcium absorption in girls with adequate calcium intakes. *Br J Nutr* **87**, Suppl. 2, S187–S191.
39. Martin BR, Braun MM, Wigertz K, *et al.* (2010) Fructooligosaccharides and calcium absorption and retention in adolescent girls. *J Am Coll Nutr* **29**, 382–386.
40. Coudray C, Bellanger J, Castiglia-Delavaud C, *et al.* (1997) Effect of soluble or partly soluble dietary fibres supplementation on absorption and balance of calcium, magnesium, iron, and zinc in healthy young men. *Eur J Clin Nutr* **51**, 375–380.
41. Tahiri M, Tressol JC, Arnaud J, *et al.* (2003) Effect of short chain fructooligosaccharides on intestinal Ca absorption and Ca status in postmenopausal women: a stable isotope study. *Am J Clin Nutr* **77**, 449–457.
42. Van den Heuvel EG, Muijs T, Brouns F, *et al.* (2009) Short-chain fructo-oligosaccharides improve magnesium absorption in adolescent girls with a low calcium intake. *Nutr Res* **29**, 229–237.
43. Dahl WJ, Whiting SJ, Isaac TM, *et al.* (2005) Effects of thickened beverages fortified with inulin on beverage acceptance, gastrointestinal function, and bone resorption in institutionalized adults. *Nutrition* **21**, 308–311.
44. Holloway L, Moynihan S, Abrams SA, *et al.* (2007) Effects of oligofructose-enriched inulin on intestinal absorption of calcium and magnesium and bone turnover markers in postmenopausal women. *Br J Nutr* **97**, 365–372.
45. Tahiri M, Tressol JC, Arnaud J, *et al.* (2001) Five-week intake of short-chain fructo-oligosaccharides increases intestinal absorption and status of magnesium in postmenopausal women. *J Bone Miner Res* **16**, 2152–2160.
46. Adolphi B, Scholz-Ahrens KE, Vrese M, *et al.* (2009) Short-term effect of bedtime consumption of fermented milk supplemented with calcium, inulin-type fructans and caseinphosphopeptides on bone metabolism in healthy, postmenopausal women. *Eur J Nutr* **48**, 45–53.
47. Lopez-Huertas E, Teucher B, Boza JJ, *et al.* (2006) Absorption of calcium from milks enriched with fructooligosaccharides caseinophosphopeptides, tricalcium phosphate, and milk solids. *Am J Clin Nutr* **83**, 310–316.
48. Tzortzis G, Goulas AK, Gee JM, *et al.* (2005) A novel galacto-oligosaccharides mixture increases the bifidobacterial population numbers in a continuous *in vitro* fermentation system and in the proximal colonic contents of pigs *in vivo*. *J Nutr* **135**, 1726–1731.
49. Rodriguez-Cabezas ME, Camuesco D, Arribas B, *et al.* (2010) The combination of fructooligosaccharides and resistant starch shows prebiotic additive effects in rats. *Clin Nutr* **29**, 832–839.
50. Ben X, Li J, Feng Z, *et al.* (2008) Low level of galacto-oligosaccharides in infant formula stimulates growth of intestinal bifidobacteria and lactobacilli. *World J Gastroenterol* **14**, 6564–6568.
51. Bouhnik Y, Raskine L, Simoneau G, *et al.* (2004) The capacity of nondigestible carbohydrates to stimulate fecal bifidobacteria in healthy humans: a double-blind, randomized, placebo-controlled, parallel-group, dose–response relation study. *Am J Clin Nutr* **80**, 1658–1664.
52. Walton GE, van den Heuvel EG, Kosters MH, *et al.* (2012) A randomised crossover study investigating the effects of galacto-oligosaccharides on the faecal microbiota in men and women over 50 years of age. *Br J Nutr* **107**, 1466–1475.
53. Moro G, Minoli I, Mosca M, *et al.* (2002) Dosage-related bifidogenic effects of galacto- and fructooligosaccharides in formula-fed term infants. *J Pediatr Gastroenterol Nutr* **34**, 291–295.
54. Davis LMG, Martinez I, Walter J, *et al.* (2010) A dose dependent impact of prebiotic galactooligosaccharides on the intestinal microbiota of healthy adults. *Int J Food Microbiol* **144**, 285–292.
55. Slegte J (2002) Determination of trans-galactooligosaccharides in selected food products by ion-exchange chromatography: collaborative study. *J AOAC Int* **85**, 417–423.