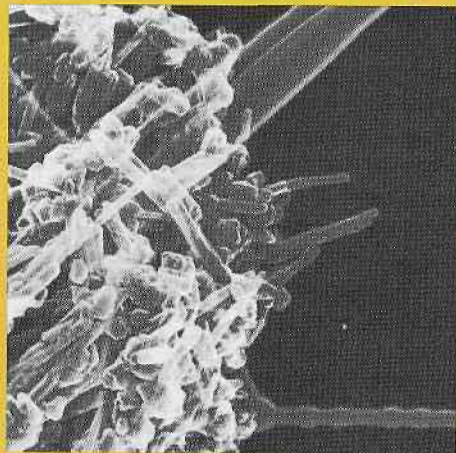
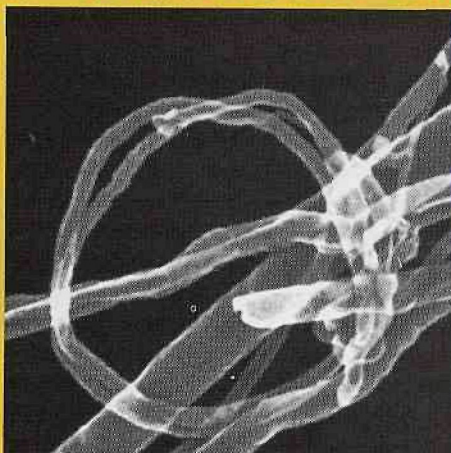


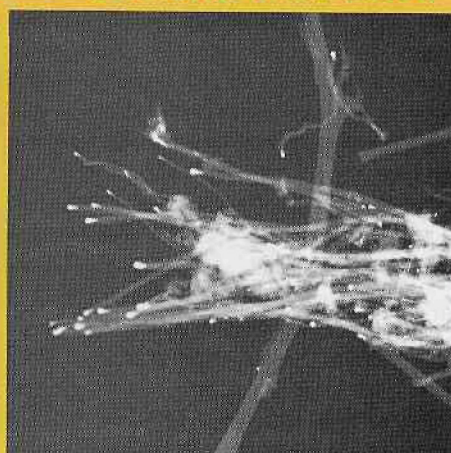
Have You Seen the Possibilities?



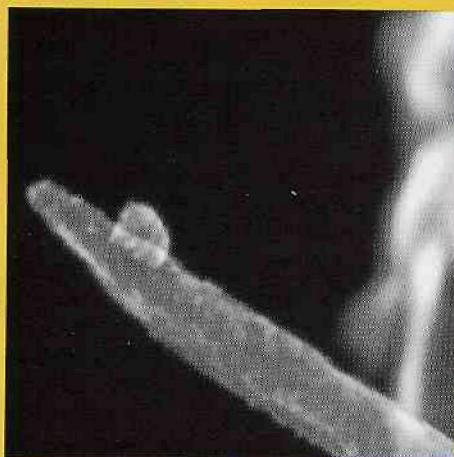
HD-2000 200kV x80.0k SE 300nm



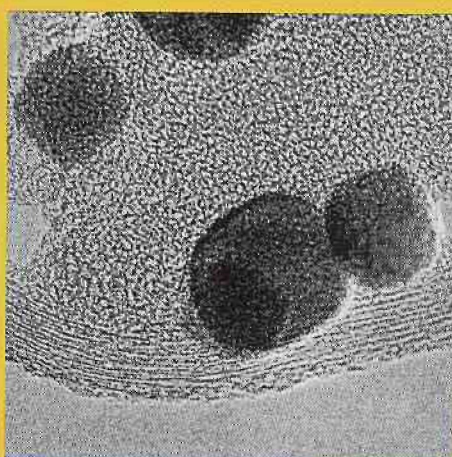
S-4800 30.0kV x200k SE(U) 200nm



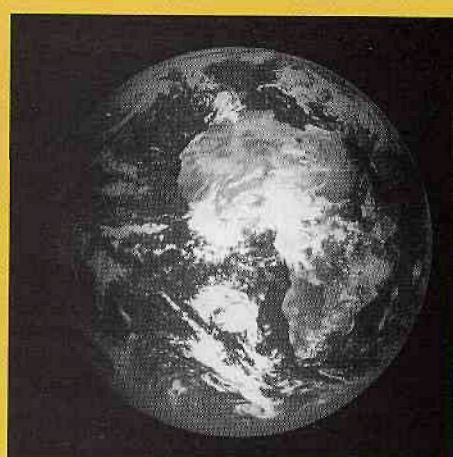
HD-2000 200kV x25.0k ZC 100nm



S-4800 30.0kV x500k SE(U) 100nm



HD-2000 200kV x1300k TE 20.0nm



VIEW FROM SATELLITE 6000km

We Have.

At Hitachi, we envision a world of endless possibilities.

We understand the impact nanotechnology will have on our planet, and provide products and services with value based on the latest advances in technology. Our wide variety of ELECTRON MICROSCOPES can enable scientists to explore new approaches to solving the world's most challenging problems and empower countless applications to produce stronger, faster, smarter materials that promise to enhance our lives for the better.

© Hitachi High Technologies America, Inc.

Electron Microscope Division Headquarters
5100 Franklin Drive
Pleasanton, CA 94588
Sales Phone: (800) 227-8877
Service Phone: (800) 253-3053
www.hitachi-hita.com

HITACHI
Inspire the Next

The Zen of TEM

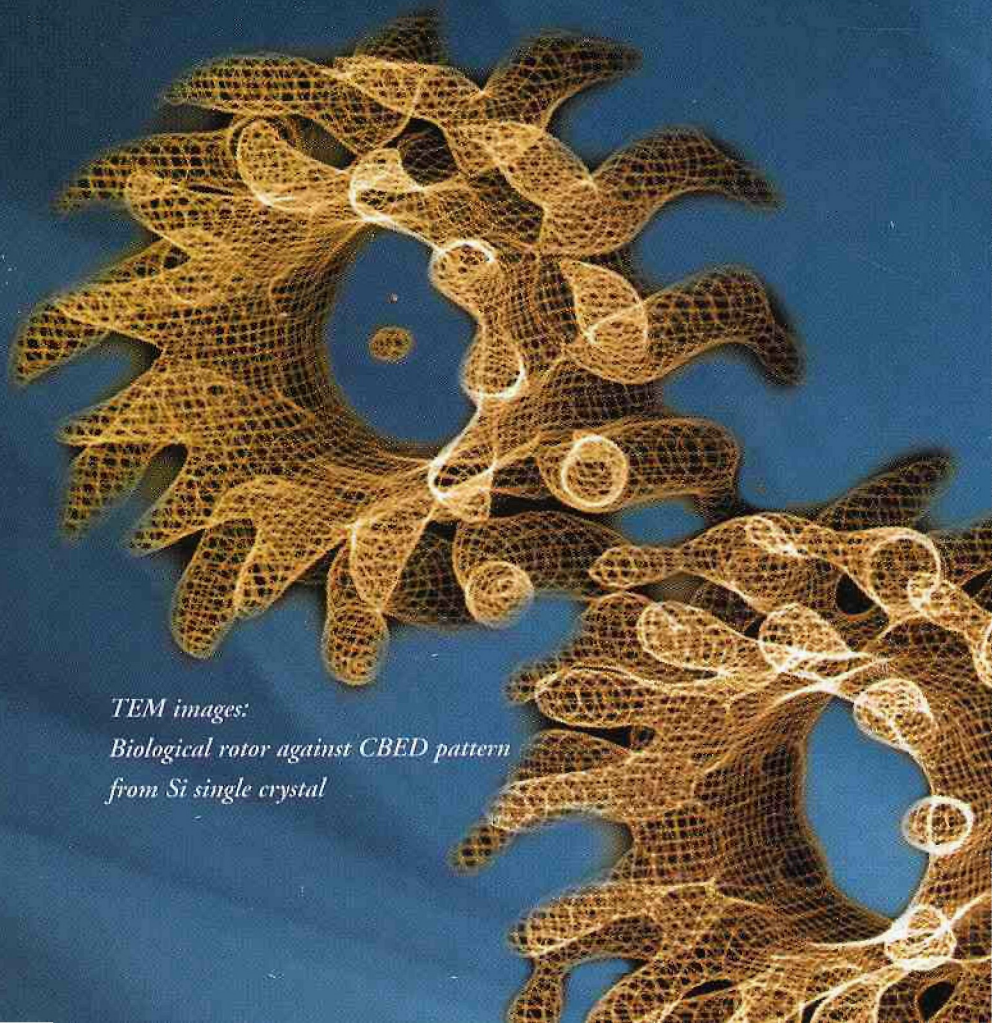
Take the simplest path to great discoveries at the nano level and beyond. Let JEOL help you discover the elusive details in your TEM samples.

Stability, cleanliness, and simplicity -- the essence of our new TEM technology -- produce unmatched image and data quality. JEOL's expertise in cryo-tomography, electron diffraction, in-situ microscopy, analytical EM, aberration-corrected sub-angstrom imaging, and holography will guide you through your most challenging explorations.

View our panorama of images at www.jeol.com/temgallery, contact your local JEOL representative, or speak with us at 978-535-5900.

Stability
Integrity of Performance
Greater Productivity

JEOL



*TEM images:
Biological rotor against CBED pattern
from Si single crystal*