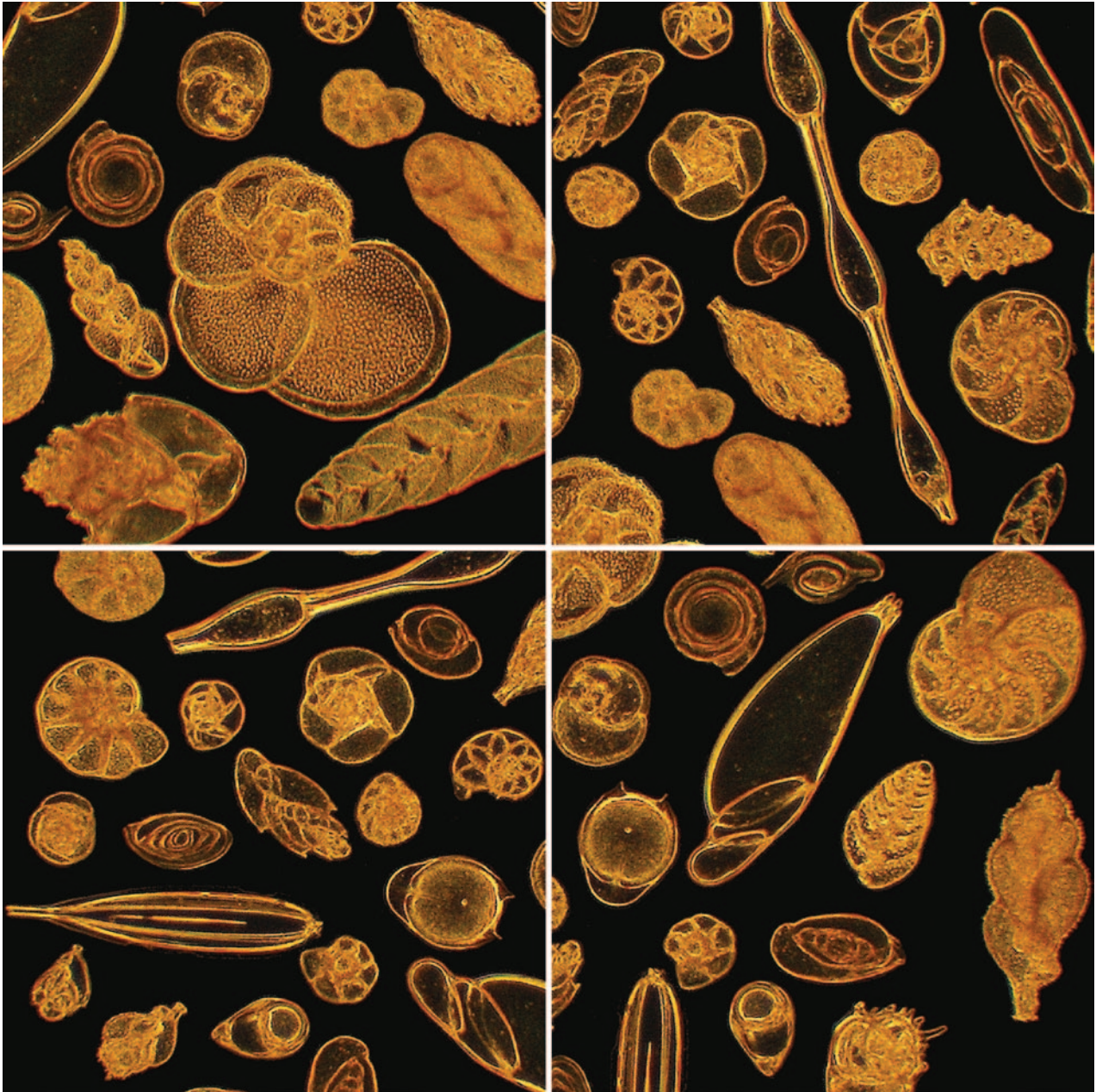


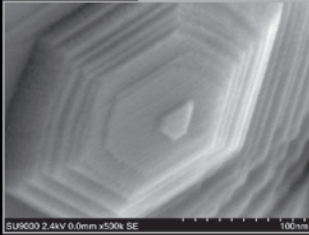
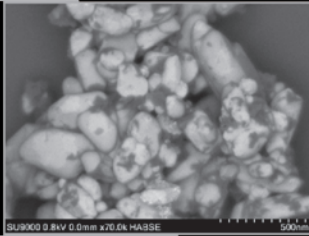
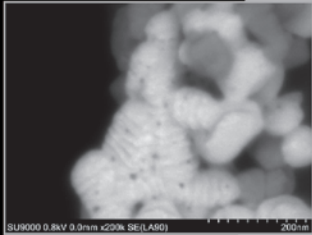
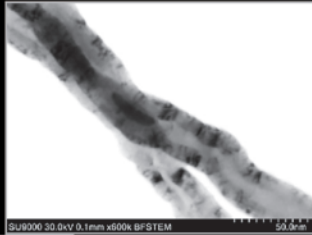
# Microscopy TODAY

Volume 21 Number 1 2013 January



# Explore the Future

## The NEW Hitachi SU9000 Ultra-High-Resolution Field Emission Scanning Electron Microscope



*All new Hitachi SEMs, TEMs, and FIBs are now offered with a 3-year parts warranty!\**

Hitachi's latest FE-SEM system, Model SU9000, is designed for ultra-high-resolution imaging, even for beam-sensitive specimens and advanced semiconductor devices that require stable observation at magnifications up to 3,000,000 times.

### When it counts, think Hitachi

\* Consumables and non-Hitachi accessories excluded. Offer valid in the United States only. Requires acceptance of additional Terms & Conditions. Hitachi High Technologies America reserves the right to terminate the 3-year parts warranty program at any time. Contact us for details.

Hitachi High Technologies America, Inc.  
toll free: 800-548-9001 (US & Canada)  
email: sales-LS@hitachi-hta.com

[www.hitachi-hta.com/su9000](http://www.hitachi-hta.com/su9000)  
[www.youtube.com/HitachiHT?A](http://www.youtube.com/HitachiHT?A)

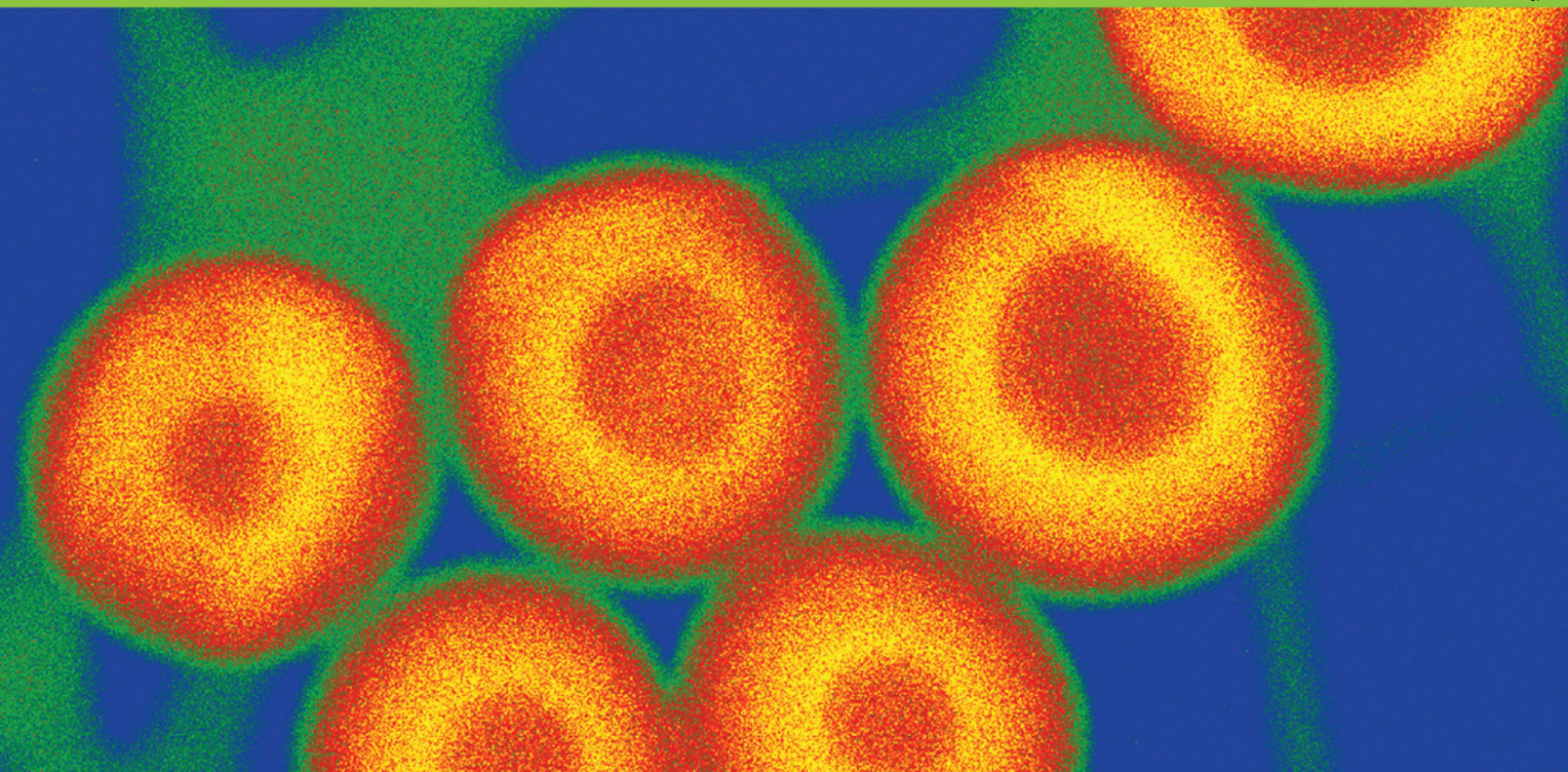
**HITACHI**  
Inspire the Next



**M&M** 2013  
**MICROSCOPY &  
MICROANALYSIS**  
August 4 – 8 • Indianapolis, IN

**Call for  
Papers  
NOW  
OPEN**

Paper Submission Deadline:  
**FEBRUARY 15, 2013**



Submit Your Paper:  
<http://microscopy.org/MandM/2013>

Visit the above website for program,  
registration, and hotel information.







# We Focus On Your Image

## TENGRA – 5.3 Megapixel Bottom-Mounted TEM CCD Camera

Olympus Soft Imaging Solutions has many years of experience serving the needs of the global EM community. By focusing on exceptional image quality for both Life and Materials Sciences, we have developed an acclaimed product range of high-quality side- and bottom-mounted TEM cameras over the years. Now it's time to complete this line-up with the TENGRA, our new 5.3 Megapixel TEM CCD bottom-mounted camera.

Boasting a superb price-performance ratio, this great camera meets the expectations of customers buying high-end TEM CCD cameras today – the combination of high resolution, high sensitivity, superior contrast, high frame rates, and comparably large field of view. With its excellent image quality, flexible navigation tools, digital live streaming, live image transfer, plus various other features, the TENGRA meets both stringent quality demands and market requirements. The TENGRA is of course also completely integrated into ITEM, our TEM imaging platform.

For further information:  
[info.osis@olympus-sis.com](mailto:info.osis@olympus-sis.com), [www.soft-imaging.net](http://www.soft-imaging.net)

# OLYMPUS

Your Vision, Our Future



# Contents

## Feature Article

**10 Upgrading Standard Bright-Field Microscopes for Dark-Field and Phase Contrast**

Jörg Piper

## From Here to Eternity

**18 From Galaxies to Nanocrystals: A Brief Trip Across 30 Orders of Magnitude**

A. Thorel and U. Dahmen

## Analysis and Microscopy

**22 Spectroscopy with a Light Optical Microscope**

Paul Martin

**28 Fast STEM Spectrum Imaging Using Simultaneous EELS and EDS**

Paolo Longo and Ray D. Twisten

**34 Quantitative Cathodoluminescence Opens New Areas of Investigation in Semiconductor Research and Production**

P. Corfdir, O. Gougeon, S. Sonderegger, and J.-D. Ganière

**40 The Open-Source Cornell Spectrum Imager**

Robert Hovden, Paul Cueva, Julia A. Mundy, and David A. Muller

## Meetings

**46 Microscopy & Microanalysis 2013 in Indianapolis**

Teresa Ruiz, Program Chair

**50 Microscopy & Microanalysis 2012**

Luke N. Brewer, Program Chair

## Departments

**7 Editorial**

**8 Carmichael's Concise Review**

**52 Microscopy Pioneers**

**54 Industry News**

**56 Product News**

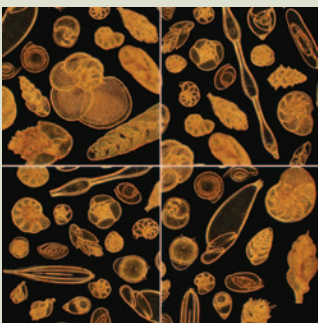
**58 NetNotes**

**63 Calendar of Meetings**

**65 Dear Abbe**

**66 Index of Advertisers**

### About the Cover



Dark-field image of foraminiferida taken with an upgraded bright-field microscope. Full width = 500  $\mu\text{m}$ .

See article by Piper.



# The SPI Supplies Family of Instruments

https://doi.org/10.1017/S155192952001113 Published online by Cambridge University Press



Excellence in sample preparation  
just a click away... [2spi.com](http://2spi.com)

Your results will never be better than your sample preparation. See how SPI Supplies can help you deliver the highest quality results for all your SEM/EDS, TEM and FESEM applications.

1. Osmium Plasma Coaters for FESEM Applications
2. SPI-MODULE™ Sputter/Carbon Coater Module
3. Gentle Mill™ Ion Milling System
4. Plasma Prep™ III Solid State Plasma Cleaner for cleaning TEM holders

5. Plasma Prep™ X Parallel Plate Plasma Etcher
6. Plasma Prep™ III Plasma Etcher with PPIII Process Controller
7. Vacu Prep™ II Turbo Pump Evaporation System
8. SPI-DRY™ Critical Point Dryer
9. Precision Spin Coater Spin coater



SPI Supplies Division of STRUCTURE PROBE, Inc.

P.O. Box 656 • West Chester, PA 19381-0656 USA  
Phone: 1-610-436-5400 • 1-800-2424-SPI (USA and Canada) • Fax: 1-610-436-5755 • [2spi.com](http://2spi.com) • E-mail: [sales@2spi.com](mailto:sales@2spi.com)

