

Precise effective temperatures of solar analog stars

D. Cornejo-Espinoza¹, I. Ramírez², P. S. Barklem³ and
W. Guevara-Day¹

¹Departamento de Astrofísica, Agencia Espacial del Perú, CONIDA

²McDonald Observatory and Department of Astronomy, University of Texas at Austin, USA

³Department of Physics and Astronomy, Uppsala University, Sweden

Abstract. We perform a study of 62 solar analog stars to compute their effective temperatures (T_{eff}) using the Balmer line wing fitting procedure and compare them with T_{eff} values obtained using other commonly employed methods. We use observed $H\alpha$ spectral lines and a fine grid of theoretical LTE model spectra calculated with the best available atomic data and most recent quantum theory. Our spectroscopic data are of very high quality and have been carefully normalized to recover the proper shape of the $H\alpha$ line profile. We obtain T_{eff} values with internal errors of about 25 K. Comparison of our results with those from other methods shows reasonably good agreement. Then, combining T_{eff} values obtained from four independent techniques, we are able to determine final T_{eff} values with errors of about 10 K.

Keywords. Lines Profiles, Stellar Atmospheres.

1. Introduction

The effective temperature (T_{eff}) is one of the most important parameters in the study of stars. For example, precise and accurate T_{eff} values allow us to reliably measure the chemical compositions of stars. Other important stellar parameters such as luminosity, radius, etc., can only be obtained once T_{eff} is known. A number of techniques have been devised to derive T_{eff} . In this work, we use the relative flux level in the wings of $H\alpha$ line profile as an indicator of the star's effective temperature (e.g., Gehren 1981, Barklem *et al.* 2002).

In studies of stars like the Sun, systematic errors can be minimized if the data are carefully treated with a differential analysis. Thus, very precise T_{eff} values can in principle be derived using high quality data of solar analog stars. The aim of this work is to derive T_{eff} values using model fits to the $H\alpha$ line wings of 62 solar analogs and to compare the results with the T_{eff} values derived using three other methods.

2. Determination of the effective temperature using $H\alpha$

The method we use consists of finding the best match to an observed $H\alpha$ line profile from a theoretical grid (see Fig. 1). Spectroscopic data acquired with the R. G. Tull coude spectrograph on the 2.7 m Telescope at McDonald Observatory, properly normalized, are employed. The spectral resolution is $R = 60,000$ and the average signal-to-noise ratio is 300. Spectral windows free from telluric lines in our solar spectrum (asteroid reflected sunlight) are identified first and later used for the entire sample. The model grid was calculated as in Barklem *et al.* (2002) and it has a fine spacing of 10 K in T_{eff} , 0.05 dex in $\log g$, and 0.05 dex in $[\text{Fe}/\text{H}]$. The T_{eff} and its error are derived using least squares minimization. We find $T_{\text{eff}} = 5752 \pm 16$ K for the Sun (error bar corresponds

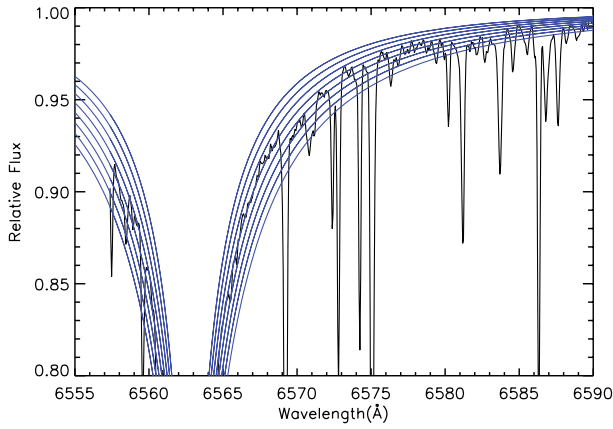


Figure 1. Our observed solar spectrum is superposed on a theoretical grid of H α line profiles.

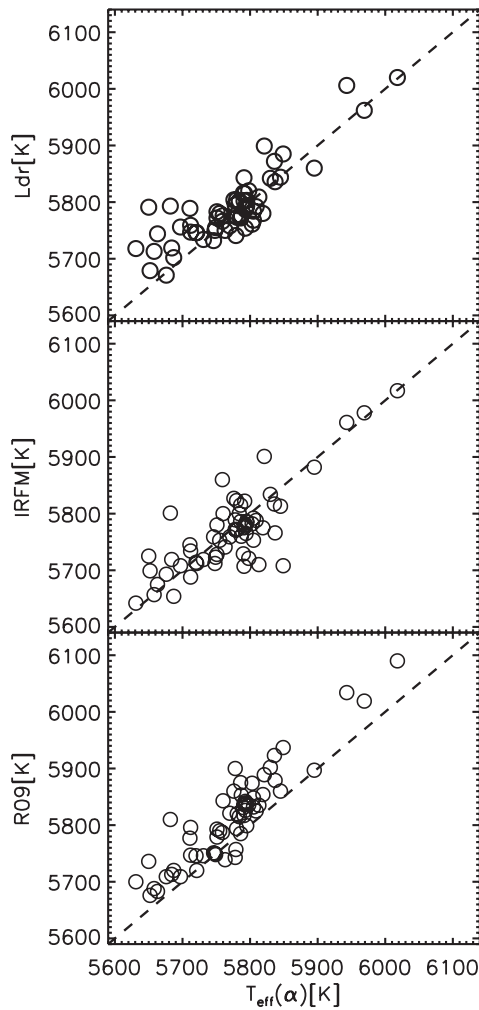


Figure 2. Comparison of our $T_{\text{eff}}(\text{H}\alpha)$ with T_{eff} values from the Ldr (upper panel), IRFM (middle panel), and R09 (lower panel) methods.

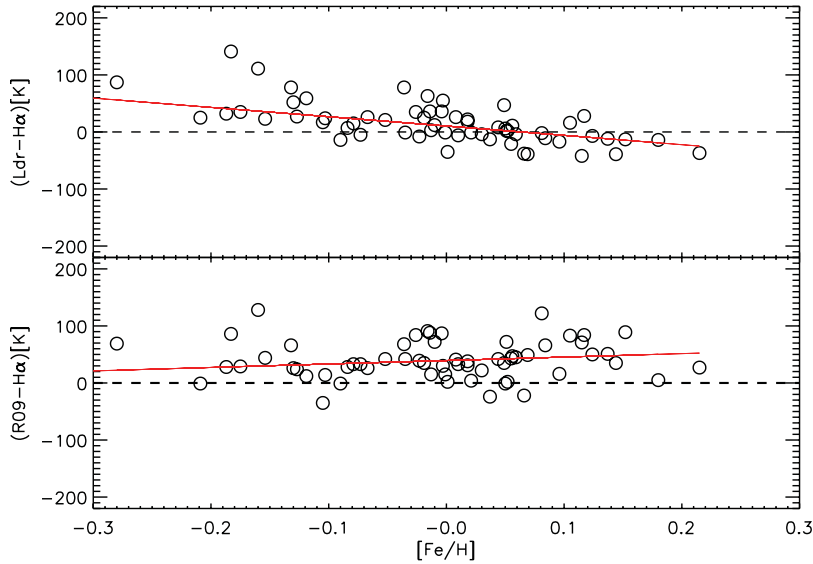


Figure 3. $T_{\text{eff}}(\text{Ldr}) - T_{\text{eff}}(\text{H}\alpha)$ residuals vs. $[\text{Fe}/\text{H}]$ (upper panel) and $T_{\text{eff}}(\text{R09}) - T_{\text{eff}}(\text{H}\alpha)$ residuals vs. $[\text{Fe}/\text{H}]$ (lower panel). Solid lines are linear fits to the residuals.

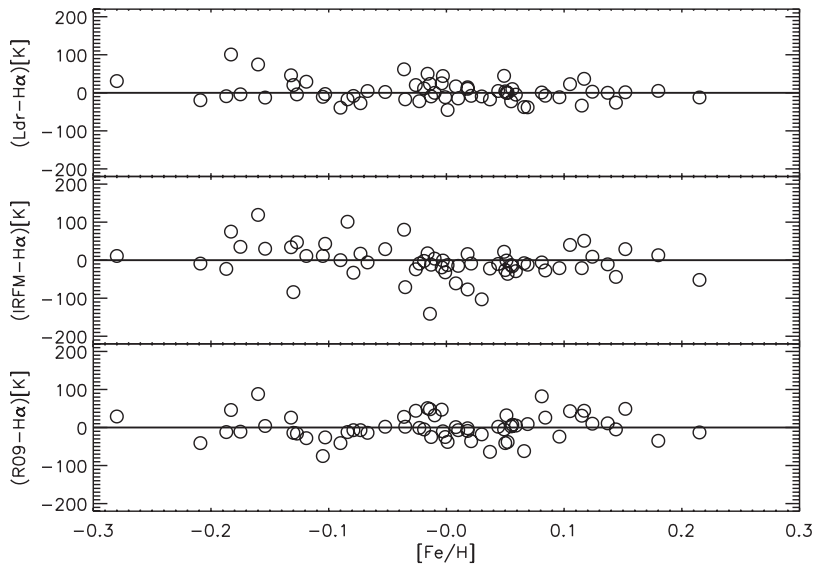


Figure 4. Residuals of T_{eff} value comparison from different methods after removing small trends and offsets.

to observational noise only). We applied zero point corrections to our solar T_{eff} 's based on solar spectrum adding the difference in temperature that forces the solar T_{eff} to be equal to 5777 K, adding the same temperature difference on the whole sample. Internal errors in our derived T_{eff} values are about 25 K. Note, however, that Barklem *et al.* (2002) point out that systematic errors can be as large as 80 K. Nevertheless, in our differential analysis of solar analog stars, we expect the systematic errors to have a small impact.

3. Comparison with other methods

Careful inspection of the residuals of the T_{eff} value comparisons revealed small offsets and trends with stellar parameters. For example, Ldr–H α showed a clear [Fe/H] dependency while R09–H α revealed an offset of about 40 K, as shown in Fig. 3. The former could be due to the fact that Ldr calibration formulae do not take [Fe/H] into account while the latter may be related to the degeneracy between T_{eff} and $\log g$ derived only from an iron line analysis (i.e., forcing excitation/ionization balance). We re-calculated the values of T_{eff} (R09) and T_{eff} (Ldr), thus eliminating the small trends and offsets with linear corrections. In this way, residuals of the T_{eff} comparisons are dominated by measurement errors (Fig. 4).

We compared our T_{eff} (H α) with the T_{eff} obtained from the method of the spectral line-depth ratios (Ldr; e.g., Gray & Johansson 1991, Gray 1994), using the calibration formulae by Kovtyukh *et al.* (2003). We also compared our temperatures with those from the infrared flux method (IRFM; e.g., Ramírez *et al.* 2005) T_{eff} scale, using the color calibrations by Casagrande *et al.* (2010). Finally, we also made a comparison with the values of T_{eff} obtained from the excitation equilibrium of Fe I lines, as derived by Ramírez *et al.* (2009, hereafter R09). Our T_{eff} (H α) values are in reasonably good agreement with those from the Ldr, IRFM, and R09 methods, as shown in Fig. 2.

4. Conclusions

Effective temperatures have been determined using the method of Balmer line fitting for a sample of 62 solar analog stars, with internal errors of about 25 K. The other methods discussed in this work have internal errors of about 35 K. The high precision of our T_{eff} values are useful to find small residual trends in the comparison with other methods. We find reasonably good agreement with the T_{eff} 's obtained with the Ldr, IRFM, and R09 methods, but small trends and offsets for the residuals are detected and removed with linear corrections. We argue that high accuracy effective temperatures, with errors of order 10 K, are possible to achieve for solar analog stars if several independent measurement are combined, mainly because the impact of errors is very small and can be understood and removed empirically.

Acknowledgments

I. R.'s work was performed under contract with the California Institute of Technology (Caltech) funded by NASA through the Sagan Fellowship Program. D. C. thanks the Organizing Committee of the event for the financial support, and J.F. Valle of the direction of Astrophysics of CONIDA - Space Agency of Perú, for his suggestions and CONIDA for its support. P. S. B is a Royal Swedish Academy of Sciences Research Fellow supported by a grant from the Knut and Alice Wallenberg Foundation.

References

- Barklem, P. S., Stempels, H. C., Allende Prieto, C. *et al.* 2002, *A&A*, 385, 951
- Casagrande, L., Ramírez, I., Meléndez, J. *et al.* 2010, *A&A*, 512, 54
- Gehren, T. 1981, *A&A*, 100, 97
- Gray, D. F. & Johanson, H. L. 1991, *PASP*, 103, 439
- Gray, D. F. 1994, *PASP*, 106, 1248
- Kovtyukh, V. V., Soubiran, C., Belik, S. I., & Gorlova, N. I. 2003, *A&A*, 559, 564
- Ramírez, I. & Meléndez, J. 2005, *ApJ*, 626, 465
- Ramírez, I., Meléndez, J., & Asplund, M. 2009, *A&A*, 508, L17