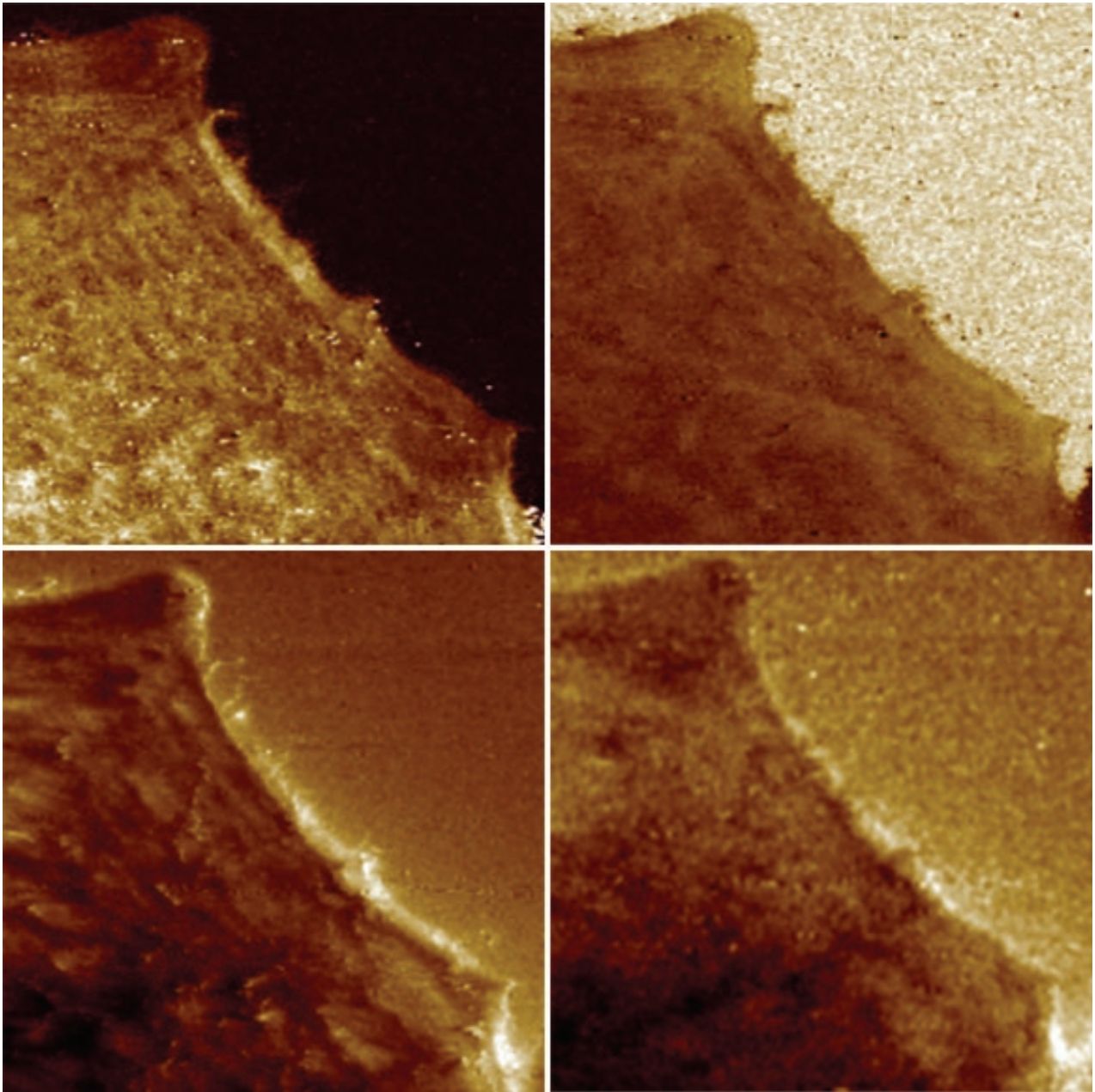


Microscopy TODAY

Volume 21 Number 6 2013 November

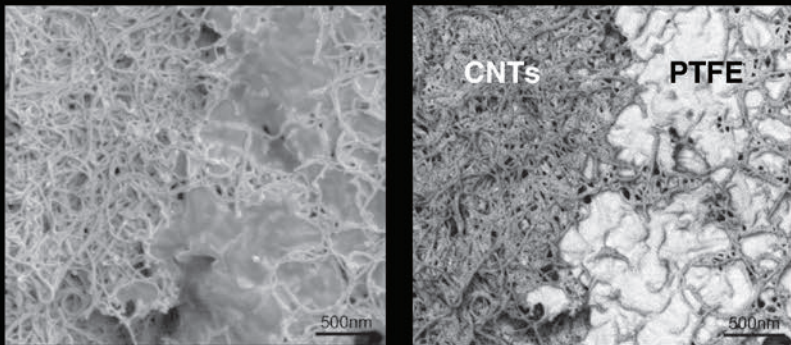


The Ultimate SEM Is Here!

All New Hitachi SU8200 Series Next-Generation CFE-SEM

Hitachi's next generation Cold Field Emission SEM offers unmatched low-voltage imaging and comprehensive analytical microanalysis with the uncompromised performance of CFE.

- Increased probe current for S/N and analytical performance.
- Unparalleled imaging throughput with improved CFE beam stability.
- Enhanced deceleration and new selective energy filter provide fine contrast differentiation of similar atomic number materials at low accelerating voltages.



Energy Filter OFF

Energy Filter ON

Sample: Carbon Nanotube (CNT) and Polytetrafluoroethylene (PTFE) composite film (protective film used for fuel cell) Sample Courtesy of Prof. Yoshiyuki SHOW, School of Engineering, Tokai University, Japan

Hitachi High Technologies America, Inc.
toll free: 800-548-9001 (US & Canada)
email: emdwebsite@hitachi-hita.com
www.hitachi-hita.com

Copyright © 2013 Hitachi High Technologies America, Inc. All rights reserved.

HITACHI
Inspire the Next

Microscopy Society of America Awards

Nominations are now open for the Microscopy Society of America Annual Awards. The awards process is one way in which the Microscopy Society of America recognizes the significant and diverse contributions that individuals make to our field. Deserving nominations for consideration should be submitted electronically no later than November 15th, 2013 to:

AssociationManagement@microscopy.org

The Main Society Awards Are

Distinguished Scientist Awards

These Awards recognize preeminent senior scientists from both the Biological and Physical disciplines who have a long-standing record of achievement during their career in the field of microscopy or microanalysis.

Burton Medal

The Burton Medal was initiated to honor the distinguished contributions to the field of microscopy and microanalysis of a scientist who is less than 40 years of age on January 1st of the award year. (Please note the change in the selection criterion regarding age.)

Outstanding Technologist Awards

These Awards honor technologists from both the Biological (Hildegard H. Crowley Award) and Physical Sciences (Chuck Fiori Award) who have made significant contributions such as the development of new techniques which have contributed to the advancement of microscopy and microanalysis.

Morton D. Maser Distinguished Service Award

This Award was initiated to recognize outstanding volunteer service to the Society as exemplified by Mort Maser, who served the Society for many years with great dedication. This award is made to honor an MSA member who has provided significant volunteer service to the Society over a period of years.

The Albert Crewe Award

The Albert Crewe Award was initiated to recognize the distinguished contributions to the field of microscopy and microanalysis in the physical sciences of a postdoctoral fellow of not more than 6 years' standing (since doctoral graduation).

The George Palade Award

The George Palade Award was initiated to recognize the distinguished contributions to the field of microscopy and microanalysis in the life sciences of a postdoctoral fellow of not more than 6 years' standing (since doctoral graduation).



Further details of the nomination process can be found on the society webpage at: www.microscopy.org

Raise your confidence

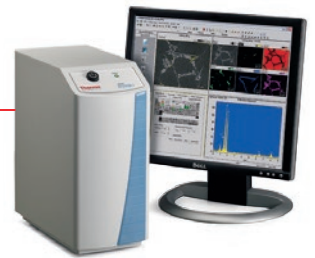
Spectral imaging on the **Thermo Scientific NORAN System 7** creates new opportunities to discover what is truly in your sample. Our UltraDry detector and analyzer electronics ensure that you collect as much data from the sample as possible. Go beyond simple elemental EDS map analysis; our exclusive COMPASS™ software processes spectral imaging data using principal component and statistical analyses to reveal unique phases and enrich your understanding of materials.

See what's really in your sample

• Discover more: thermoscientific.com/microanalysis



UltraDry EDS Detector
Fastest Collection, Most Accuracy



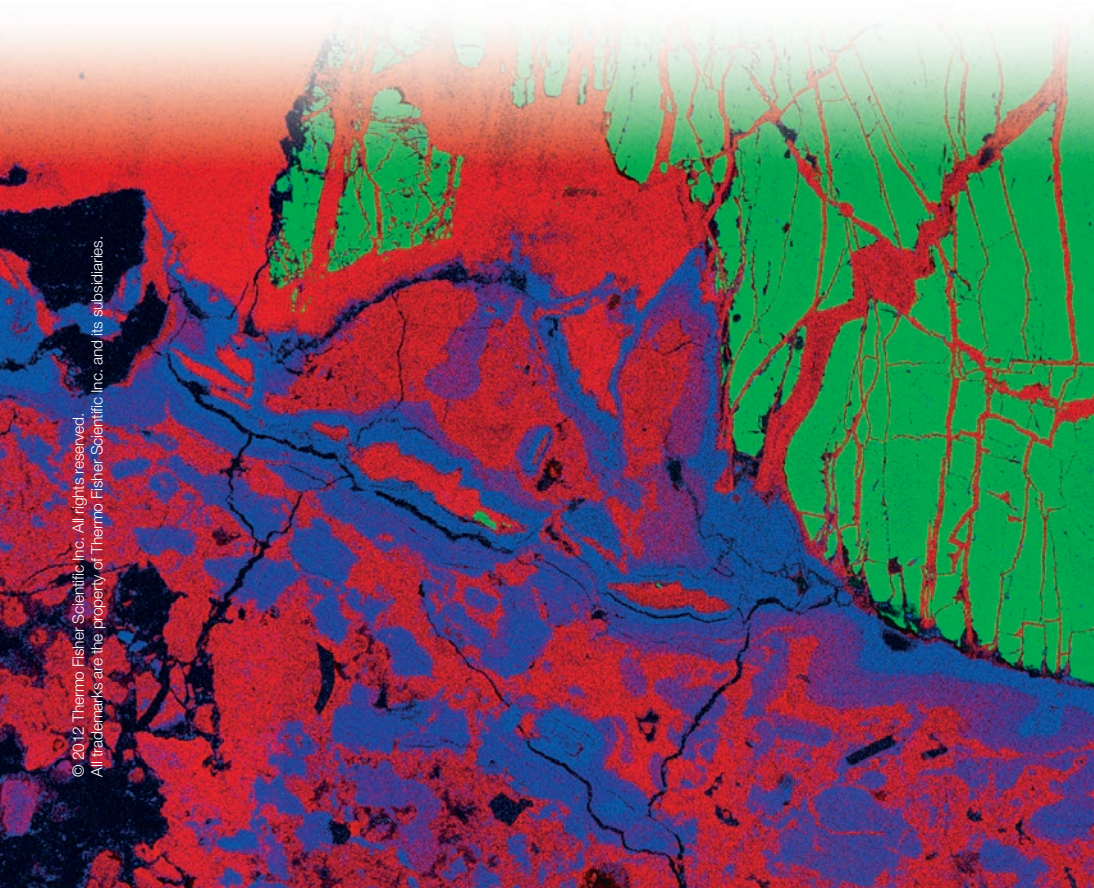
NORAN™ System 7
Integrated X-ray Microanalysis System



QuasOr EBSD
Simultaneous EDS. Better data.



MagnaRay WDS
Resolution with EDS Ease of Use



Contents

Scanning Probe Microscopy

- 12 Performing Quantitative Nanomechanical AFM Measurements on Live Cells**
Bede Pittenger and Andrea Slade
- 18 Lorentz Contact Resonance Imaging for Atomic Force Microscopes: Probing Mechanical and Thermal Properties on the Nanoscale**
Eoghan Dillon, Kevin Kjoller, and Roshan Shetty
- 26 AFM Integrated with SEM and FIB: A Synergistic Union**
Aaron Lewis, A. Komissar, A. Ignatov, Oleg Fedoroyov, E. Maayan, Dalia Yablon, and H. Taha
- 32 Scanning Microwave Microscopy for Nanoscale Electrical Characterization**
Geoffrey Anderson

Image Processing

- 38 Huygens STED Deconvolution Increases Signal-to-Noise and Image Resolution towards 22 nm**
Vincent Schoonderwoert, Remko Dijkstra, Grazvydas Luckinavicius, Oliver Kobler, and Hans van der Voort

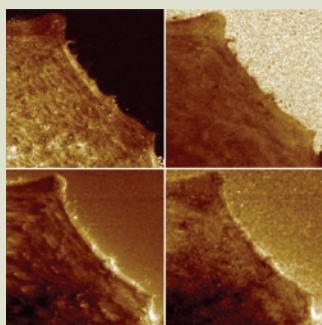
Opinion

- 70 A Modest Proposal for the Propagation of Information Concerning Radiation Damage in the TEM, and as Fodder for Pasturized Professors**
Ray Egerton

Departments

- | | |
|--------------------------------------|--------------------------------|
| 7 Editorial | 54 NetNotes |
| 8 Carmichael's Concise Review | 64 Calendar of Meetings |
| 46 Microscopy Pioneers | 68 Dear Abbe |
| 50 Industry News | 74 Index to Advertisers |
| 52 Product News | |

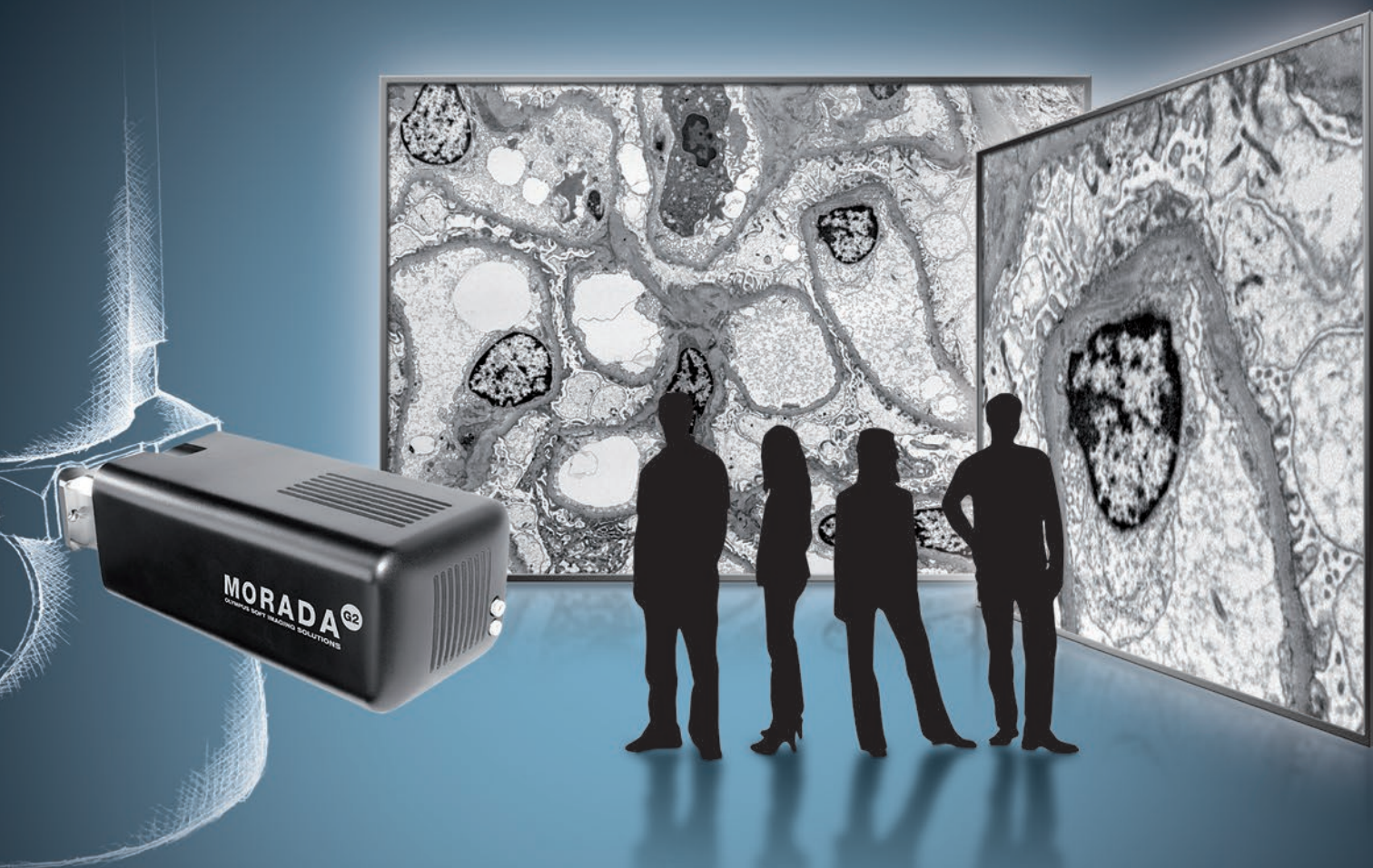
About the Cover



Atomic force microscopy mapping of the following nanomechanical properties in a live mouse cell: deformation, modulus, dissipation, and adhesion. Image width = 10 μm .

See article by Pittenger and Slade.

One image. Every detail. Keep track of your sample.



Morada G2 - 11 Megapixel side-mounted TEM CCD camera

Are you looking for a complete sample image? Are you interested in high resolution? Or do you need both - overview scans and image details? Whatever your requirements, the Morada G2 will be your camera of choice.

Experience a new method of TEM imaging and keep track of your sample. Survey your sample using an impressive field of view. Scan for interesting areas in real time. Zoom in on details instantly. Snap high-contrast, high-sensitivity and superior-resolution images. All these features and more make the Morada G2 perfect for every imaging task.

One image. Every detail. Just one camera. The Morada G2. Imaging solution for electron microscopy. Based on opto-digital know-how. Designed by customer requirements.

For further information: info.osis@olympus-sis.com,
www.soft-imaging.net

OLYMPUS

Your Vision, Our Future

