

*The Journal of*

THE HELICOPTER  
ASSOCIATION OF  
GREAT BRITAIN

CONTENTS include

THE PLACE OF THE HELICOPTER IN A  
MODERN ARMY

by Lt -Ccl P W Mead

FRENCH HELICOPTER DEVELOPMENTS

by L F G Legrand

LONDON  
4, THE SANCTUARY  
WESTMINSTER S W 1

Vol 13 No 3 JUNE 1959

# ROTOR BLADES

by **HORDERN-RICHMOND**



*Photograph of P531 reproduced  
by courtesy of Saunders Roe Ltd*

HELICOPTER, WIND TUNNEL AND AIRSCREW BLADES

The Saunders-Roe P 531 The blades for both the main and tail rotors of this new, turbine powered helicopter have been designed and manufactured by

**HORDERN-RICHMOND**

who also make tail rotor blades for Bristol and Westland helicopters, and supply Hydulignum for the main rotor blades of the BRISTOL "SYCAMORE" and "173" helicopters

Specialists in jigs and press tools of Hydulignum and Permaglass  
for the manufacture of aircraft components



**HORDERN-RICHMOND LIMITED** BRISTOL ROAD, GLOUCESTER

Telephone Gloucester 24941



Wherever helicopters fly on regular services whether from city centres or airfields in difficult terrain, the need for an all-altitude navigation system of high accuracy is vital. Only Decca provides such precise information continuously with pictorial presentation in the cockpit.



Being a low frequency hyperbolic navigation system Decca gives high-accuracy coverage down to ground level unaffected by weather or intervening obstacles. The system is so precise that it can be also used as an approach aid over more than a million square miles of Europe.

Because of Decca's high accuracy at all altitudes it is the only system that provides both close lateral separation in flight and flexibility in routing.

**THE DECCA  
NAVIGATOR**

*the world's most accurate  
navigation system*

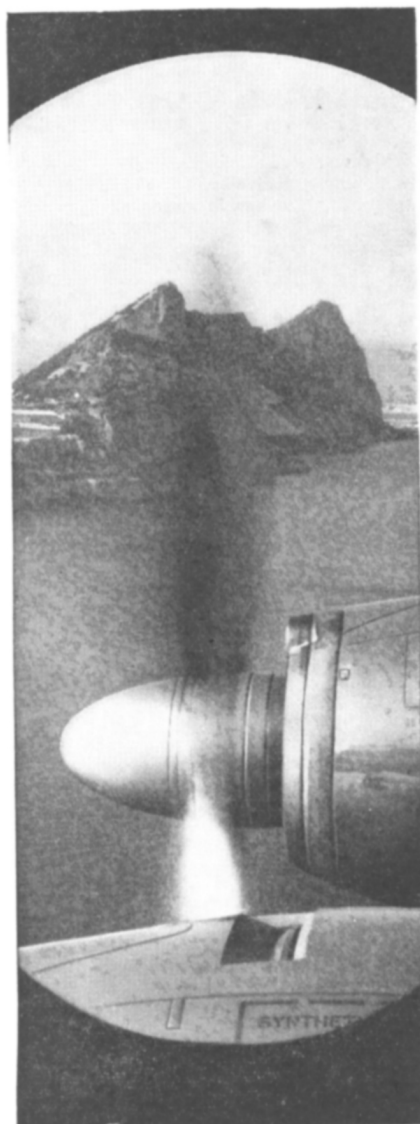
THE DECCA NAVIGATOR COMPANY LTD LONDON

# Up in the air...

. all over the world

the majority of modern aircraft  
depend on Rotax Units

Rotax have been specialists in  
the design and manufacture of  
electrical and starting systems for  
aircraft for more than 40 years  
Today, all Rotax facilities for  
research, development, manufacture  
and a comprehensive advisory  
service are at the service of the  
aircraft industries of the world



**ROTAX**

## Complete Electrical and Starting Systems for Aircraft

Rotax Limited Willesden Junction London N W 10  
Lucas Rotax (Australia) Pty Ltd Melbourne and Sydney Australia  
Lucas Rotax Ltd Toronto Montreal and Vancouver Canada

## Power for the Widgeon

The Alvis Leonides which powers the Westland Widgeon has already proved itself in many thousand hours of helicopter operation and is in extensive use with the Royal Navy, the Army, the Royal Air Force and many civilian operators.



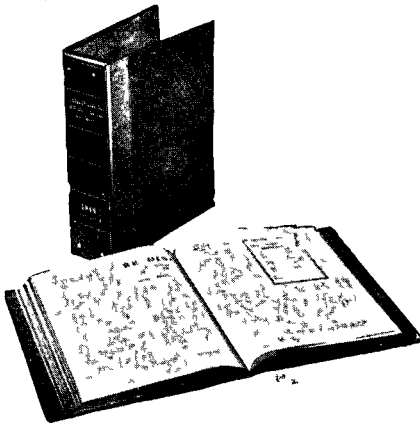
**ALVIS** LEONIDES AERO ENGINES  
ALVIS LIMITED COVENTRY ENGLAND

# **HELICOPTER DYNAMICS AND AERODYNAMICS**

By **P R PAYNE** This is the first really comprehensive treatment of helicopter theory by a practising designer of rotary wing aircraft. Correlating theory and practical results throughout, the author has constantly kept in mind the requirements of the industry. The book which is more up to date than anything yet published on the subject, contains the first accounts in book form of cantilever, stiff hinged, high flapping pin offset and other advanced forms of rotor, and also the rotor blade flutter. No prior knowledge of helicopter theory is required of the reader who is taken up to the most advanced theories and methods used in the modern design office.

*From booksellers, 84/- net*

**PITMAN** Parker Street, Kingsway, London, W C 2



## **PROTECT**

## **YOUR JOURNALS**

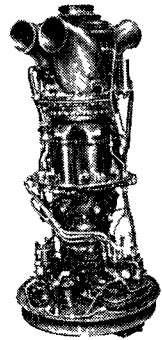
The Binders illustrated, in which the Association Journals can be readily clipped for preservation and easy reference, are available from the Association's Offices. The price is 15/- (Overseas postage extra), and this includes the Title in gold lettering on the spine.

**4 The Sanctuary, Westminster, S W 1**





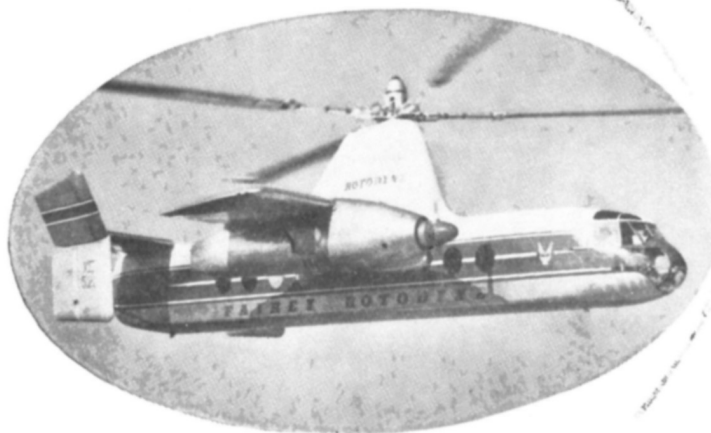
Whether it's at one end, as in the quietly efficient Westland Wessex whether it's at both ends, as in the outstanding Bristol 192 whether it's upright, horizontal or in any position in between, the Napier Gazelle free turbine engine will always satisfy the exacting demands of helicopter operation. Designed specifically for use in helicopters, the Napier Gazelle, with its "any angle" installation, relieves the designer of many accepted limitations and gives him more opportunity to make proper use of fuselage space.



# **NAPIER** **GAZELLE** FREE TURBINE ENGINE

*D NAPIER & SON LIMITED LONDON W3 A member of the English Electric Aviation Group*

# The World's fastest Rotorcraft



**ROTODYNE sets new world record at 191 m.p.h.**

Fairey's Rotodyne vertical take off airliner has established itself as the fastest rotorcraft in the world. On 5th January, 1959 it flew round a 62 mile closed circuit record course at an officially observed average speed of 191 m p h for a new world convertiplane speed record—at *cruising* power and *operational* weight.

This record almost 50 m p h faster than the corresponding helicopter record and 30 m p h faster than the absolute speed record for helicopters confirms Fairey's claim that the true V T O airliner is here now, for city-centre to city centre journeys needing no expensive air fields, wasting no valuable time.

THE FAIREY AVIATION COMPANY LIMITED

**FAIREY**

## Rotodyne

*Powered by Napier Eland turbo props*

HAYES MIDDLESEX  
ENGLAND AUSTRALIA CANADA



The Journal of  
**THE HELICOPTER ASSOCIATION**  
 OF GREAT BRITAIN

*President*  
 E MENSFORTH, CBE, MA, M I Mech E F R Ae S M I P E

*Past Presidents*  
 J G Weir CMG CBE F R Ae S  
 L Mensforth CBE MA M I Mech E F R Ae S M I P E  
 Marshal of the RAF Lord Douglas of Kirtleside GCB MC DFC  
 The Rt Hon Lord Brabazon of Tara GBE MC PC Hon F R Ae S

*Vice Presidents*  
 R A C Brie A F R Ae S A F I Ae S  
 G S Hislop Ph D B Sc (Eng) A R C S T M I Mech E F R Ae S

Offices 4, The Sanctuary, Westminster, S W 1 Tel Abbey 5160

VOL 13 No 3 JUNE, 1959 PRICE 10/6

*THE COUNCIL*

*Chairman*  
 J W Richardson A F R Ae S  
 B H Arkell A F R Ae S  
 J A J Bennett, D Sc Ph D  
 F R Ae S  
 R A C Brie A F R Ae S  
 A F I Ae S  
 A E Bristow A R Ae S  
 J A Cameron  
 L G Frise B Sc F R Ae S  
 A F I Ae S  
 W R Gellatly A F C  
 M H C Gordon  
 R Hafner F R Ae S  
 J E Harper A F C  
 N J G Hill A M I Mech E  
 A R Ae S M C A I  
 A McClements A R C S T  
 M I Mech E  
 J S Shapiro Dipl Ing  
 A F R Ae S  
 D L Hollis Williams, B Sc  
 F R Ae S

*Hon Secretary*  
 R H Whitby D I C A R C Sc  
 B Sc F R Ae S

*Hon Treasurer*  
 W G Leslie A C I S

*Asst Secretary*  
 Miss P Chute

*Journal Hon Editor*  
 B H Arkell A F R Ae S

*Technical Editors*  
 D M Davies MA A F R Ae S  
 A McClements A R C S T  
 M I Mech E  
 J S Shapiro Dipl Ing  
 A F R Ae S  
 R H Whitby D I C, A R C Sc  
 B Sc F R Ae S

*Librarian*  
 R W L Cure

*Auditors*  
 W B Keen & Co

The opinions expressed in papers read before the Association and in the discussions also recorded in this Journal are not necessarily those of the Executive Council or of the Association as a whole

**CONTENTS**

	<i>Page</i>
<b>THE PLACE OF THE HELICOPTER IN A MODERN ARMY</b>	
By Lt -Col P W MEAD	133
DISCUSSION	146
<b>FRENCH HELICOPTER DEVELOPMENTS</b>	
By L F G LEGRAND	157
DISCUSSION	176
<b>NOTICES</b>	185

**OBJECTS OF THE ASSOCIATION**

The objects of the Association are to collect, compile and disseminate information of a technical and semi technical nature pertaining to Helicopters and all other types of Rotating Wing Aircraft. The Association aims to work in close co operation with existing Aeronautical Bodies on matters affecting its objects and it may act as an Advisory Body in the promotion of legislation calculated to be of benefit to the development of Rotating Wing Aircraft

*Publications Manager*

S H Pilton Effingham House Arundel Street London WC 2

# WESTLAND

*opens the WAY*

STRAIGHT

IN TO

**WESTLAND**

# HELIPORT LONDON

YORK & LOMBARD ROADS · BATTERSEA S W 11

