

Original Paper

Cite this article: Duan C, Zhang X, Jin H, Cheng X, Wang D, Bao C, Zhou M, Ahmad T, Min J (2019). Meteorological factors and its association with hand, foot and mouth disease in Southeast and East Asia areas: a meta-analysis. *Epidemiology and Infection* **147**, e50, 1–18. <https://doi.org/10.1017/S0950268818003035>

Received: 2 July 2018

Revised: 20 September 2018

Accepted: 15 October 2018

Key words:

Hand; foot and mouth disease; meteorological factors; correlation coefficient; meta-analysis

Author for correspondence:

Hui Jin, E-mail: jinhui_hld@163.com

Meteorological factors and its association with hand, foot and mouth disease in Southeast and East Asia areas: a meta-analysis

Chunxiao Duan^{1,2}, Xuefeng Zhang³, Hui Jin^{1,2}, Xiaoqing Cheng¹, Donglei Wang¹, Cangjun Bao³, Minghao Zhou³, Tauseef Ahmad¹ and Jie Min¹

¹Department of Epidemiology and Health Statistics, School of Public Health, Southeast University, Nanjing (210009), China; ²Key Laboratory of Environmental Medicine Engineering, Ministry of Education, School of Public Health, Southeast University, Nanjing (210009), China and ³Jiangsu Provincial Center for Disease Control and Prevention, China

Abstract

Since the late 1990s, hand, foot and mouth disease (HFMD) has become a common health problem that mostly affects children and infants in Southeast and East Asia. Global climate change is considered to be one of the major risk factors for HFMD. This study aimed to assess the correlation between meteorological factors and HFMD in the Asia-Pacific region. PubMed, Web of Science, Embase, China National Knowledge Infrastructure, Wanfang Data and Weipu Database were searched to identify relevant articles published before May 2018. Data were collected and analysed using R software. We searched 2397 articles and identified 51 eligible papers in this study. The present study included eight meteorological factors; mean temperature, mean highest temperature, mean lowest temperature, rainfall, relative humidity and hours of sunshine were positively correlated with HFMD, with correlation coefficients (CORs) of 0.52 (95% confidence interval (CI) 0.42–0.60), 0.43 (95% CI 0.23–0.59), 0.43 (95% CI 0.23–0.60), 0.27 (95% CI 0.19–0.35), 0.19 (95% CI 0.02–0.35) and 0.19 (95% CI 0.11–0.27), respectively. There were sufficient data to support a negative correlation between mean pressure and HFMD (COR = –0.51, 95% CI –0.63 to –0.36). There was no notable correlation with wind speed (COR = 0.10, 95% CI –0.03 to 0.23). Our findings suggest that meteorological factors affect the incidence of HFMD to a certain extent.

Introduction

Hand, foot and mouth disease (HFMD) is a common infectious disease caused by a group of enteroviruses, including coxsackievirus A16 (CA16) and enterovirus 71 (EV71) [1]. Since the late 1990s, HFMD has been a concern in Asia-Pacific countries [2], including China, Japan, South Korea, Vietnam and Singapore. In March 2008, an outbreak led to the death of 23 children infected with EV71 in Fuyang city, Anhui Province, China [3]. According to statistics from the National Health and Family Planning Commission regarding category C infectious diseases, there were 994 882 cases of paediatric HFMD reported in China in 2014, including 16 872 (1.69%) severe cases and 624 (0.06%) fatal cases [4]. From January 2000 to December 2015, there were 2 521 199 cases of HFMD reported in Japan. The majority of cases involved were children under the age of 5 years; this age group accounted for, and more than 80.4% of the reported cases from 2000 to 2014 [5]. In Vietnam, the number of reported cases in 2008 and 2009 was approximately 10 000, twice that of 2007. The outbreak of HFMD in Vietnam in 2012 resulted in 157 654 cases, and the incidence remained high in the following years [6]. In 2008, the largest ever outbreak in Singapore was reported, a total of 29 686 cases, with one case resulting in death [7]. HFMD caused a heavy economic and social burden, resulting in an important public health problem that seriously threatened the life and health of children and infants.

Although China pioneered the development of an innovative EV71 HFMD vaccine, this vaccine was only effective to prevent HFMD caused by EV71 infection, and could not prevent HFMD caused by infection with other enteroviruses (including CA16) [8]. Therefore, identification of risk factors for HFMD, and targeted prevention and control would be of assistance in reducing the incidence of HFMD. Currently, a large number of studies at home and abroad have focused on the impact of meteorological factors on the incidence of HFMD [9–11]. Analysis and comparison of the HFMD data with the corresponding meteorological data revealed a certain correlation between incidence of HFMD and temperature, humidity and air pressure. Although these studies were able to show that the incidence of HFMD was closely related to meteorological factors, the results of the studies were not consistent. For example, a

© The Author(s) 2018. This is an Open Access article, distributed under the terms of the Creative Commons Attribution licence (<http://creativecommons.org/licenses/by/4.0/>), which permits unrestricted re-use, distribution, and reproduction in any medium, provided the original work is properly cited.

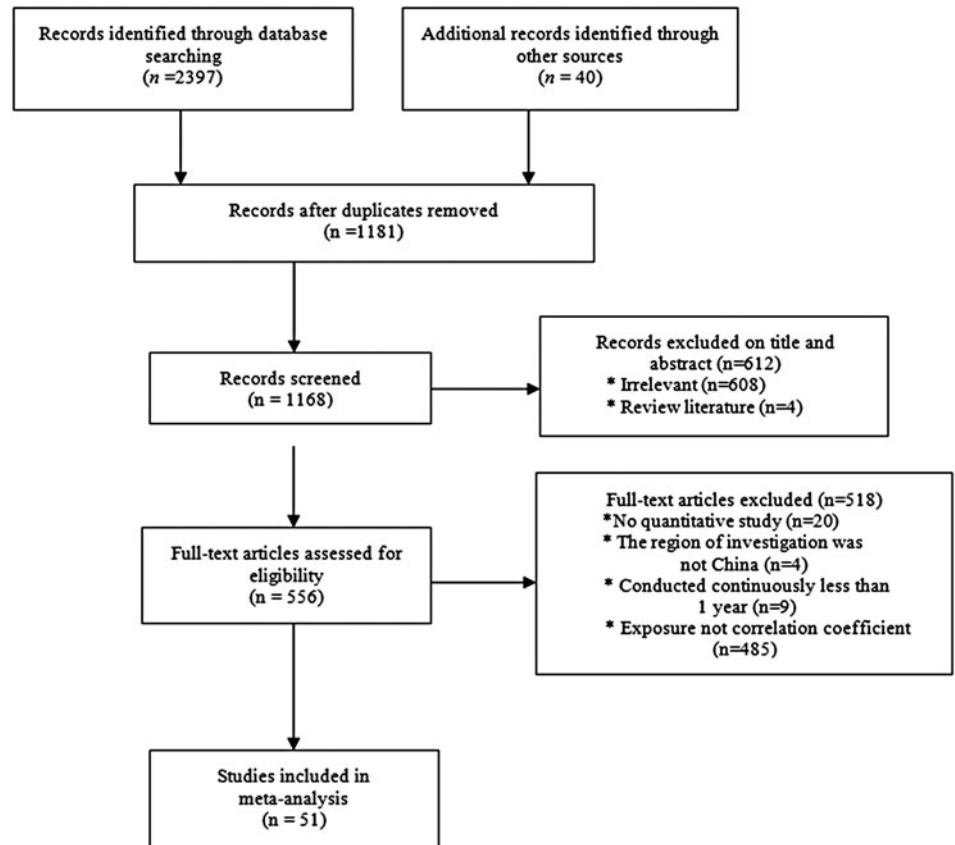


Fig. 1. Flowchart of study selection.

study conducted by Zhao *et al.* [9] reported a positive correlation between mean temperature and HFMD incidence, while Wei *et al.* [12] reported a negative result. In another example, Chen *et al.* [13] found that the mean pressure and HFMD incidence was negatively correlated, while Du *et al.* [11] reported a positive correlation. Wei *et al.* also reported no significant correlation between mean pressure and the incidence of HFMD. These inconsistencies also existed with respect to other meteorological factors.

It was clear from previous studies that the correlation between meteorological factors and HFMD were not consistent. Therefore, the current study was conducted to perform a meta-analysis of published articles, with the aim of identifying meteorological risk factors for HFMD and the role of these risk factors in the pathogenesis of HFMD. The aim is to provide baseline information and a scientific basis for prevention and control measures of HFMD.

Material and methods

Search strategy

A literature search was performed using PubMed, Web of Science, Embase, China National Knowledge Infrastructure, Wanfang Data and Weipu Database. We used the following key words: hand foot and mouth disease (HFMD), meteorological, climate change, temperature, precipitation, air pressure, humidity, wind speed and sunshine. Articles published before May 2018 were included in the current study. References from the retrieved documents were also checked to include any additional relevant articles.

Selection criteria

The inclusion criteria were as follows: (1) article language was Chinese or English; (2) study with a reported sample size; and (3) study provided clear correlation coefficient (COR), risk ratio (RR), odds ratio (OR) and incidence rate ratio (IRR) between meteorological factors and HFMD incidence.

Exclusion criteria were as follows: (1) review article; (2) repeatedly published papers; (3) articles with irrelevant data or lack of required information.

Data collection and quality assessment

The first author, year of publication, title, location, study period, time sample size, meteorological factors and COR were recorded on a form. To evaluate the impact of study quality on the results of the study, we designed an assessment programme according to standard guidelines [14–16]. The evaluation scheme included nine items assessing reporting quality, external validity and bias, with possible scores ranging from 0 (poor quality) to 10 (high quality). Each document was independently scored by two researchers and discrepancies were resolved jointly [8].

Statistical analysis

R software (R Foundation for Statistical Computing, Vienna, Austria) was used for meta-analysis. First, Q and I^2 statistics were used to estimate heterogeneity among studies. According to the Q -statistic, if P value of <0.10 indicates heterogeneity in the risk factors among studies, then in such cases the

Table 1. Characteristics of the 51 publications included in the meta-analysis

| Reference | Location | Study period | Time sample size | Statistical method | Resolution | Climate group |
|--------------------------|------------------|--------------|------------------|--|------------|---------------|
| Tian <i>et al.</i> [18] | Beijing, China | 2010–2012 | 36 | Bayesian spatiotemporal Poisson regression model | Monthly | Temperate |
| Li <i>et al.</i> [30] | Shandong, China | 2008 | 47 | Spatiotemporal mixed model | Weekly | Temperate |
| Chen [13] | Mainland, China | 2010–2014 | 60 | Spearman correlation analysis | Monthly | |
| Zhang and Wang [31] | Hainan, China | 2010–2014 | 60 | Univariate and multivariate linear regression analyses | Monthly | Tropical |
| Du <i>et al.</i> [32] | Guangdong, China | 2011–2014 | 208 | Seasonal autoregressive integrated moving average (SARIMA) model | Weekly | Subtropical |
| Wu <i>et al.</i> [22] | Hunan, China | 2009–2015 | 84 | Spatial autocorrelation and spatiotemporal cluster analysis | Monthly | Subtropical |
| Gou <i>et al.</i> [19] | Gansu, China | 2010 | 12 | Bayesian spatial conditional autoregressive model | Monthly | Temperate |
| Phung <i>et al.</i> [20] | Vietnam | 2011–2014 | 48 | Generalised linear model (GLM) | Monthly | Tropical |
| Zhao <i>et al.</i> [9] | Huainan, China | 2009–2014 | 312 | Distributed lag non-linear model (DLNM) | Weekly | Subtropical |
| Du <i>et al.</i> [11] | Mainland, China | 2011 | 12 | Classification and regression tree model (CART) | Monthly | |
| Jiang <i>et al.</i> [33] | Qingdao, China | 2007–2014 | 416 | Spearman rank correlation analysis | Weekly | Temperate |
| Han [34] | Jinan, China | 2007–2014 | 96 | Spearman correlation analysis | Monthly | Temperate |
| Song <i>et al.</i> [17] | Zhengzhou, China | 2010–2014 | 60 | Pearson correlation analysis | Monthly | Temperate |
| Dong and Wang [35] | Xinzheng, China | 2012–2015 | 48 | Logistic regression | Monthly | Temperate |
| Li <i>et al.</i> [36] | Suizhou, China | 2010–2014 | 60 | Multiple linear regression | Monthly | Temperate |
| Zhou and Gao [37] | Shanghai, China | 2010–2012 | 156 | Multiple linear stepwise regression | Weekly | Subtropical |
| Wang <i>et al.</i> [10] | Qinzhou, China | 2010–2015 | 72 | Multiple linear stepwise regression | Monthly | Temperate |
| You <i>et al.</i> [36] | Kunming, China | 2014 | 365 | Multiple linear regression | Daily | Subtropical |
| Gu <i>et al.</i> [38] | Jiangyin, China | 2009–2014 | 72 | Pearson correlation analysis | Monthly | Subtropical |
| Xu <i>et al.</i> [10] | Jiayuguan, China | 2008–2012 | 1825 | DLNM | Daily | Temperate |
| Zhou <i>et al.</i> [39] | Chengdu, China | 2011–2013 | 156 | logistic regression model | Weekly | Subtropical |
| Lin <i>et al.</i> [40] | Hangzhou, China | 2014 | 365 | Pearson correlation analysis | Daily | Subtropical |
| Zhou and Yu [41] | Nanjing, China | 2011–2014 | 48 | Multiple linear stepwise regression | Monthly | Subtropical |
| Kim <i>et al.</i> [25] | South Korea | 2010–2013 | 208 | Generalised additive model (GAM) | Weekly | Subtropical |
| Wei <i>et al.</i> [42] | Shanxi, China | 2009–2013 | 261 | SARIMA model | Weekly | Temperate |
| Xu <i>et al.</i> [43] | Beijing, China | 2010–2012 | 1095 | DLNM | Daily | Temperate |
| Luo <i>et al.</i> [42] | Guangzhou, China | 2009–2012 | 48 | Concentration and circular distribution method | Monthly | Subtropical |
| Feng <i>et al.</i> [44] | Zhengzhou, China | 2008–2016 | 312 | SARIMA model | Weekly | Temperate |
| Xiang <i>et al.</i> [45] | Shanghai, China | 2010–2013 | 208 | Back-propagation neural network model | Weekly | Subtropical |
| Li <i>et al.</i> [46] | Beijing, China | 2009–2013 | 60 | Multivariate linear regression | Monthly | Temperate |
| Song <i>et al.</i> [47] | Guangzhou, China | 2009–2013 | 252 | SARIMA model | Weekly | Subtropical |
| Feng <i>et al.</i> [48] | Zhengzhou, China | 2008–2012 | 234 | SARIMA model | Weekly | Temperate |

(Continued)

Table 1. (Continued.)

| Reference | Location | Study period | Time sample size | Statistical method | Resolution | Climate group |
|----------------------------|------------------|--------------|------------------|--|------------|---------------|
| Chen <i>et al.</i> [49] | Suzhou, China | 2012–2013 | 24 | Spearman's rank correlation analysis | Monthly | Subtropical |
| Wu [50] | Laiwu, China | 2010–2012 | 36 | Series analysis | Monthly | Temperate |
| Wei and Zhang [12] | Linyi, China | 2007–2012 | 72 | Pearson correlation analysis | Monthly | Temperate |
| Shi <i>et al.</i> [51] | Laiwu, China | 2011–2013 | 36 | Linear regression | Monthly | Temperate |
| Wang <i>et al.</i> [52] | Kunming, China | 2009–2012 | 36 | Univariate and multivariate linear regression | Monthly | Subtropical |
| Bo <i>et al.</i> [23] | Mainland, China | 2008–2009 | 12 | Spatial autologistic regression model | Monthly | |
| Huang <i>et al.</i> [53] | Guangzhou, China | 2008–2011 | 212 | GAM | Weekly | Subtropical |
| Liu <i>et al.</i> [54] | Weifang, China | 2007–2010 | 208 | Univariate correlation and stepwise multiple regression analyses | Weekly | Temperate |
| Liu <i>et al.</i> [54] | Hebei, China | 2009–2011 | 36 | Multiple linear stepwise regression | Monthly | Subtropical |
| Zhuang <i>et al.</i> [55] | Shanghai, China | 2005–2010 | 72 | Pearson correlation analysis | Monthly | Subtropical |
| Tian <i>et al.</i> [56] | Baoji, China | 2009–2011 | 156 | Principal component analysis | Weekly | Temperate |
| Liu <i>et al.</i> [57] | Renqiu, China | 2010–2012 | 36 | Pearson correlation analysis | Monthly | Temperate |
| Luo <i>et al.</i> [58] | Guangzhou, China | 2010–2011 | 24 | Non-parametric correlation analysis | Monthly | Subtropical |
| Zheng <i>et al.</i> [59] | Shenzhen, China | 2008–210 | 36 | Geographically weighted regression model (GWR) | Monthly | Subtropical |
| Wang <i>et al.</i> [60] | Liaocheng, China | 2009–2011 | 36 | Pearson correlation analysis | Monthly | Temperate |
| Hu and Dong[61] | Wuwei, China | 2008–2010 | 1095 | Pearson correlation analysis | Daily | Temperate |
| Onozuka and Hashizume [21] | Japan | 2000–2010 | 520 | DLNMs | Weekly | Subtropical |
| Hii <i>et al.</i> [2] | Singapore | 2001–2008 | 416 | Time-series Poisson regression model | Weekly | Tropical |
| MA <i>et al.</i> [62] | Hong Kong, China | 2000–2004 | 260 | Spearman's rank correlation analysis | Weekly | Subtropical |

Table 2. Summary of the studies included on the relationships between meteorological factors with HFMD

| Reference | Location | Mean temperature (°C) | Mean maximum temperature (°C) | Mean minimum temperature (°C) | Mean air pressure (kPa) | Rainfall (mm) | Average relative humidity (%) | Hours of sunshine (hour) | Mean wind speed (m/s) |
|--------------------------|------------------|-----------------------|-------------------------------|-------------------------------|-------------------------|---------------|-------------------------------|--------------------------|-----------------------|
| Tian <i>et al.</i> [18] | Beijing, China | 0.01 | n.a. | n.a. | n.a. | 0.01 | 0.01 | n.a. | n.a. |
| Li <i>et al.</i> [30] | Shandong, China | n.a. | 0.14 | 0.14 | -0.11 | n.a. | 0.07 | n.a. | 0.08 |
| Chen <i>et al.</i> [13] | Mainland, China | 0.71 | n.a. | n.a. | -0.56 | 0.54 | 0.40 | -0.09 | n.a. |
| Zhang and Wang [31] | Hainan, China | 0.90 | n.a. | n.a. | -0.73 | n.a. | n.a. | n.a. | -0.10 |
| Du <i>et al.</i> [32] | Guangdong, China | 0.66 | n.a. | n.a. | n.a. | n.a. | n.a. | n.a. | n.a. |
| Wu <i>et al.</i> [22] | Hunan, China | 0.17 | n.a. | n.a. | n.a. | 0.09 | 0.09 | n.a. | n.a. |
| Gou <i>et al.</i> [19] | Gansu, China | 0.08 | n.a. | n.a. | n.a. | n.a. | -0.02 | n.a. | n.a. |
| Phung <i>et al.</i> [20] | Vietnam | 0.01 | n.a. | n.a. | n.a. | 0.01 | 0.00 | n.a. | n.a. |
| Zhao <i>et al.</i> [9] | Huainan, China | 0.34 | n.a. | n.a. | -0.36 | 0.02* | -0.04* | n.a. | n.a. |
| Du <i>et al.</i> [11] | Mainland, China | 0.49 | n.a. | n.a. | 0.26 | n.a. | 0.31 | n.a. | n.a. |
| Jiang <i>et al.</i> [33] | Qingdao, China | 0.77 | n.a. | n.a. | n.a. | 0.33 | 0.51 | 0.01* | n.a. |
| Han [34] | Jinan, China | 0.72 | n.a. | n.a. | -0.66 | 0.16 | 0.11 | 0.18 | 0.01* |
| Song <i>et al.</i> [17] | Zhengzhou, China | 0.55 | n.a. | n.a. | -0.56 | 0.26* | -0.04* | 0.58 | 0.34 |
| Dong and Wang [35] | Xinzheng, China | 0.56 | n.a. | n.a. | -0.15 | 0.48 | 0.15 | -0.13 | 0.37 |
| Li <i>et al.</i> [36] | Suizhou, China | 0.50 | n.a. | n.a. | -0.62 | 0.41 | 0.25* | 0.31 | n.a. |
| Zhou and Gao [37] | Shanghai, China | 0.33 | 0.37 | 0.33 | -0.44 | 0.16 | 0.31 | n.a. | n.a. |
| Wang <i>et al.</i> [10] | Qinzhou, China | 0.84 | n.a. | n.a. | -0.73 | 0.42* | 0.84 | 0.67 | -0.62 |
| You <i>et al.</i> [36] | Kunming, China | 0.53 | n.a. | n.a. | -0.42 | 0.20 | 0.06* | n.a. | -0.06* |
| Gu <i>et al.</i> [38] | Jiangyin, China | 0.40 | n.a. | n.a. | -0.49 | 0.20* | 0.15* | 0.04* | 0.15* |
| Xu <i>et al.</i> [10] | Jiayuguan, China | 0.25 | n.a. | n.a. | -0.15 | 0.02* | -0.21 | n.a. | 0.13 |
| Zhou <i>et al.</i> [39] | Chengdu, China | 0.33 | 0.32 | 0.32 | -0.26 | 0.21 | -0.06* | n.a. | -0.02* |

(Continued)

Table 2. (Continued.)

| Reference | Location | Mean temperature (°C) | Mean maximum temperature (°C) | Mean minimum temperature (°C) | Mean air pressure (kPa) | Rainfall (mm) | Average relative humidity (%) | Hours of sunshine (hour) | Mean wind speed (m/s) |
|---------------------------|------------------|-----------------------|-------------------------------|-------------------------------|-------------------------|---------------|-------------------------------|--------------------------|-----------------------|
| Lin <i>et al.</i> [40] | Hangzhou, China | 0.85 | n.a. | n.a. | n.a. | 0.80 | 0.87 | n.a. | n.a. |
| Zhou and Yu [41] | Nanjing, China | 0.53 | n.a. | n.a. | n.a. | 0.58 | n.a. | 0.19* | n.a. |
| Kim <i>et al.</i> [25] | South Korea | 0.61 | n.a. | n.a. | n.a. | 0.39 | 0.49 | −0.15 | n.a. |
| Wei <i>et al.</i> [42] | Shanxi, China | 0.63 | 0.62 | 0.66 | n.a. | 0.26 | 0.19 | 0.26 | n.a. |
| Xu <i>et al.</i> [43] | Beijing, China | 0.83 | n.a. | n.a. | n.a. | 0.22 | 0.37 | 0.09 | −0.01* |
| Luo <i>et al.</i> [42] | Guangzhou, China | 0.47 | n.a. | n.a. | n.a. | 0.60 | 0.35 | n.a. | n.a. |
| Feng <i>et al.</i> [44] | Zhengzhou, China | 0.39 | 0.39 | 0.37 | −0.43 | 0.16 | −0.06* | 0.34 | 0.26 |
| Xiang <i>et al.</i> [45] | Shanghai, China | 0.38 | 0.40 | 0.38 | −0.49 | 0.11* | 0.13 | −0.04* | 0.07* |
| Li <i>et al.</i> [46] | Beijing, China | 0.71 | 0.71 | 0.71 | −0.76 | 0.65 | 0.41 | 0.12* | −0.04* |
| Song <i>et al.</i> [47] | Guangzhou, China | 0.17 | −0.04 | −0.22 | n.a. | 0.21 | 0.20 | n.a. | 0.05 |
| Feng <i>et al.</i> [48] | Zhengzhou, China | 0.65 | 0.63 | 0.62 | −0.65 | n.a. | −0.14 | 0.24 | n.a. |
| Chen <i>et al.</i> [49] | Suzhou, China | 0.57 | n.a. | n.a. | n.a. | 0.44 | 0.31 | 0.27 | 0.40 |
| Wu [50] | Laiwu, China | 0.57 | n.a. | n.a. | −0.73 | n.a. | 0.66 | 0.50 | 0.04* |
| Wei and Zhang [12] | Linyi, China | −0.36 | n.a. | n.a. | 0.19* | −0.19* | −0.57 | 0.37 | 0.15* |
| Shi <i>et al.</i> [51] | Laiwu, China | 0.58 | 0.60 | 0.80 | n.a. | n.a. | n.a. | n.a. | n.a. |
| Wang <i>et al.</i> [52] | Kunming, China | 0.58 | n.a. | n.a. | −0.67 | 0.21* | 0.36* | 0.15* | 0.25* |
| Bo <i>et al.</i> [23] | Mainland, China | 0.04 | n.a. | n.a. | n.a. | 0.04 | n.a. | n.a. | 0.02 |
| Huang <i>et al.</i> [53] | Guangzhou, China | 0.28 | n.a. | n.a. | n.a. | 0.28 | 0.27 | n.a. | 0.16 |
| Liu <i>et al.</i> [54] | Weifang, China | 0.49 | n.a. | n.a. | −0.15 | 0.15 | 0.09* | n.a. | −0.17 |
| Liu <i>et al.</i> [54] | Hebei, China | 0.61 | n.a. | n.a. | −0.69 | 0.20* | n.a. | n.a. | 0.39* |
| Zhuang <i>et al.</i> [55] | Shanghai, China | 0.33 | 0.27 | 0.34 | n.a. | 0.14* | 0.23* | 0.05* | n.a. |
| Tian <i>et al.</i> [56] | Baoji, China | 0.81 | n.a. | n.a. | −0.74 | 0.57 | n.a. | n.a. | n.a. |
| Liu <i>et al.</i> [57] | Renqiu, China | 0.58 | n.a. | n.a. | n.a. | n.a. | 0.51 | n.a. | n.a. |
| Luo <i>et al.</i> [58] | Guangzhou, China | 0.56 | n.a. | n.a. | n.a. | 0.68 | 0.44 | 0.19* | n.a. |

| | | | | | | | | |
|----------------------------|------------------|------|------|-------|-------|-------|--------|--------|
| Zheng <i>et al.</i> [59] | Shenzhen, China | 0.26 | n.a. | n.a. | -0.30 | n.a. | n.a. | n.a. |
| Wang <i>et al.</i> [60] | Liaocheng, China | 0.51 | 0.52 | 0.47 | 0.12* | 0.10* | 0.50 | -0.07* |
| Hu and Dong [61] | Wuwei, China | 0.79 | 0.79 | 0.77 | 0.34* | -0.81 | n.a. | 0.67 |
| Onozuka and Hashizume [21] | Japan | 0.01 | n.a. | n.a. | n.a. | 0.01 | n.a. | n.a. |
| Hii <i>et al.</i> [2] | Singapore | n.a. | 0.02 | -0.01 | 0.01 | n.a. | n.a. | n.a. |
| Ma <i>et al.</i> [62] | Hong Kong, China | 0.26 | 0.26 | 0.24 | 0.23 | 0.14 | -0.01* | 0.01* |

n.a., Data were not searched; *no statistical significance, $P > 0.05$.

random-effect model was used for the meta-analysis. Otherwise, the fixed-effect model was used. When we extracted data from the included literature, we found that most of the articles used Spearman correlation to analyse the relationship between meteorological factors and HFMD, for instance, Chen *et al.* [13], and the others used Pearson correlation to analyse this association, for example, Song *et al.* [17]. If the COR was not given in the article, we could extract the RR (risk ratio) [18–21], OR [22,23] and IRR (incidence rate ratio) [2] values. Among the Southeast Asian countries researched, the incidences were all <5% [2,20,21,23–25]. When the disease incidence is <5%, OR is an excellent approximation of RR, and IRR can be regarded as OR [26]. Then methods were available to convert the OR to COR [27]. The steps are as follows.

We converted from the log OR to the standardised mean difference (SMD) using

$$SMD = \lg OR \frac{\sqrt{3}}{\pi}, \tag{1}$$

where π is the mathematical constant (approximately 3.14).

We then could convert from the standardised mean difference (SMD) to the correlation (r value) using

$$r = \frac{SMD}{\sqrt{SMD^2 + A}}, \tag{2}$$

where A is the parameter related to the sample size (n_1 and n_2) of the two sets of data in the correlation analysis, where $n_1 \neq n_2$

$$A = \frac{(n_1 + n_2)^2}{n_1 n_2}. \tag{3}$$

The parameter (A) depends on the ratio of n_1 to n_2 , rather than the absolute values of these numbers. Therefore, if n_1 and n_2 are not sure, using $n_1 = n_2$, this will yield $A = 4$.

Summary statistics were then calculated, as most meta-analyses do not directly use CORs when combining CORs, because the variance of each COR is too dependent on the correlation [27–29]. The commonly used method is to calculate the sample COR (summary r value) of each study by Fisher’s Z transform. We calculated Fisher’s Z value and its standard error SE_z for analysis, which yield the summary effect (summary Z) and 95% confidence interval (CI). Then the summary Z value was transformed into the summary r value [29]. The formulas are as follows.

The transformation from sample COR (r value) to Fisher’s Z value is given by

$$\text{Fisher's } Z = 0.5 \ln \frac{1+r}{1-r}. \tag{4}$$

The standard error of Z is

$$SE_z = \sqrt{\frac{1}{n-3}}, \tag{5}$$

where n is the time sample size.

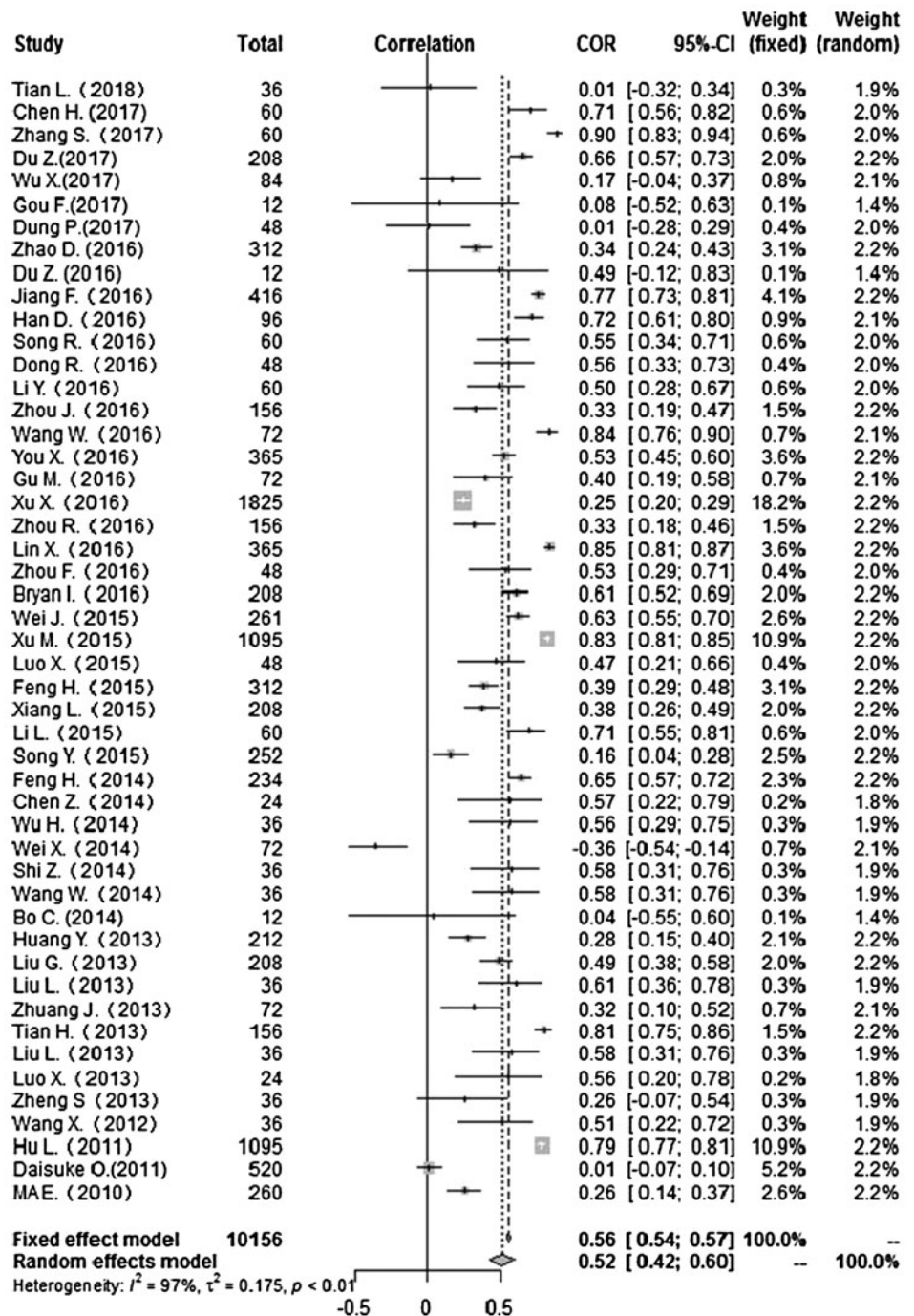


Fig. 2. Forest plot of the correlation between mean temperature and incidence of HFMD. COR, correlation coefficient; CI, confidence interval.

Then we convert each of summary Z values back to CORs (summary r) using

$$\text{Summary } r = \frac{e^{2Z} - 1}{e^{2Z} + 1}. \tag{6}$$

To calculate the summary r, and 95% CI. Based on the heterogeneity test results, we then judged the combination of effect values (summary r) using a random-effect model or a fixed-effect model. The hypothesis test was used to judge whether the correlation was statistically significant. The data were calculated and transformed using R software. Finally, forest plots were used to

indicate the effect size. Publication bias was assessed with funnel plots and Egger's test.

Results

Characteristics of eligible studies

A total of 2437 articles were retrieved and 51 articles were included in the present study (Fig. 1). Detailed information regarding the meta-analysis is provided in Tables 1 and 2.

All studies shown in Tables 1 and 2 were conducted in the Asia-Pacific areas; the time unit was month, week and day. The number of included studies were as follows: mean temperature

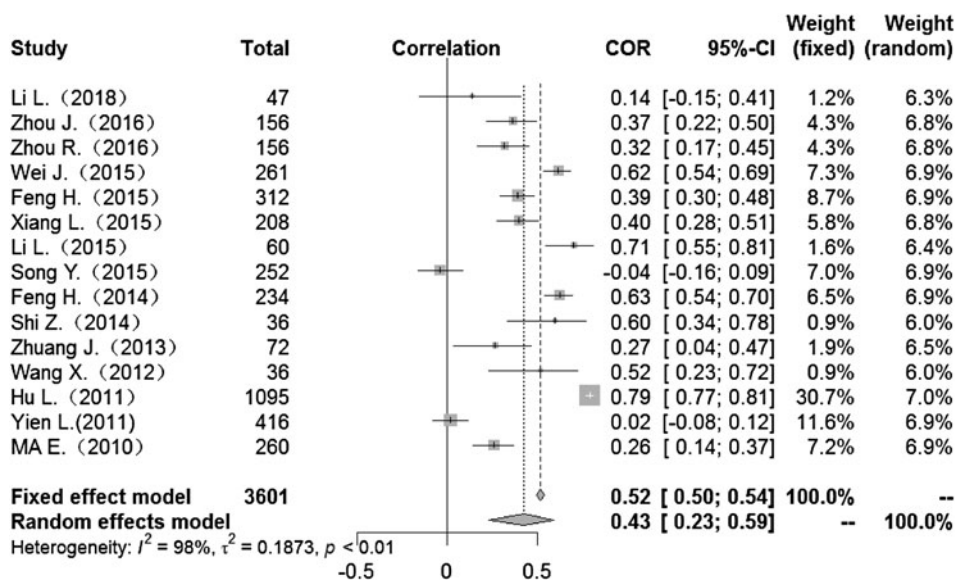


Fig. 3. Forest plot of the correlation between mean maximum temperature and incidence of HFMD. COR, correlation coefficient; CI, confidence interval.

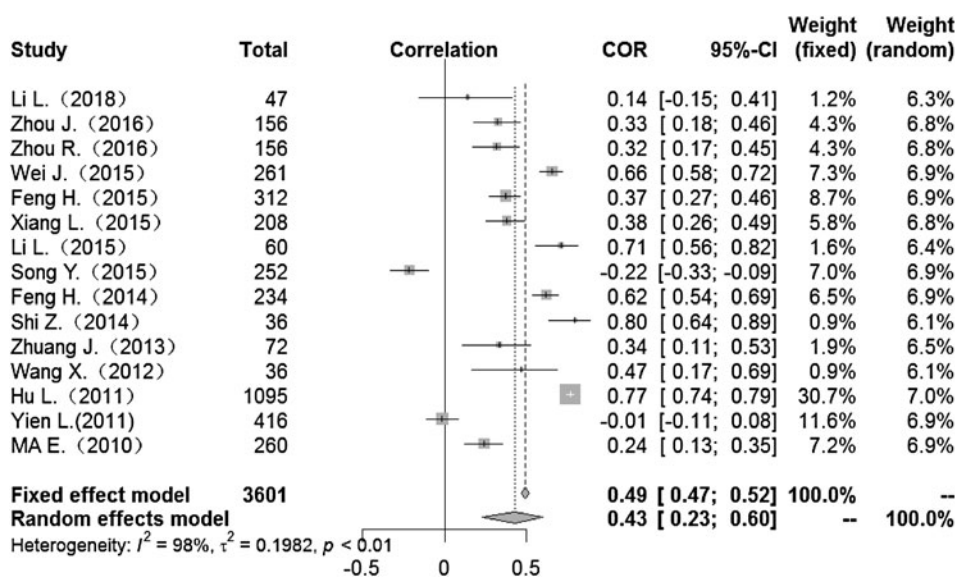


Fig. 4. Forest plot of the correlation between mean minimum temperature and incidence of HFMD. COR, correlation coefficient; CI, confidence interval.

(49 studies), mean maximum temperature (15 studies), mean minimum temperature (15 studies), mean air pressure (28 studies), rainfall (41 studies), average relative humidity (42 studies), hours of sunshine (24 studies) and mean wind speed (25 studies).

Correlation between meteorological factors and HFMD

Heterogeneity test: mean temperature ($I^2 = 97\%$, $P < 0.001$) suggested that there was heterogeneity, using the random-effects model to pool the effect values. The combined effect showed that the correlation between mean temperature and HFMD was statistically significant. CORs (mean temperature, mean air pressure and average wind speed with HFMD) were 0.52 (95% CI 0.42–0.60), -0.51 (95% CI -0.63 to -0.36) and 0.10 (95% CI -0.03 to 0.23) (Figs 2, 5, 9), the other CORs were displayed in the diagram (Figs 3, 4, 6, 7, 8), respectively, indicating that mean temperature and mean air pressure were correlated with HFMD.

The forest plots of other meteorological factors can be found in Table 3. The results of heterogeneity testing demonstrated statistically significant heterogeneity with respect to mean temperature, average maximum temperature, average minimum temperature, mean air pressure, rainfall, average relative humidity, sunshine hours and average wind speed, using a random-effects model to merge effect values (Table 3).

Subgroup analysis

The study also included subgroup analysis. In Table 4, the studies of daily resolution show that CORs of mean temperature, mean maximum temperature, mean minimum temperature, mean air pressure, rainfall and mean wind speed were highest compared with those of the remaining two groups, and the CORs of these factors were 0.70 (0.40–0.86), 0.79 (0.77–0.81), 0.77 (0.74–0.79), -0.57 (-0.89 to -0.16), 0.36 (0.09–0.58) and 0.21 (-0.17 to 0.54), respectively. In the subgroup analysis of humidity and hours of sunshine, the CORs in the subgroup of the month

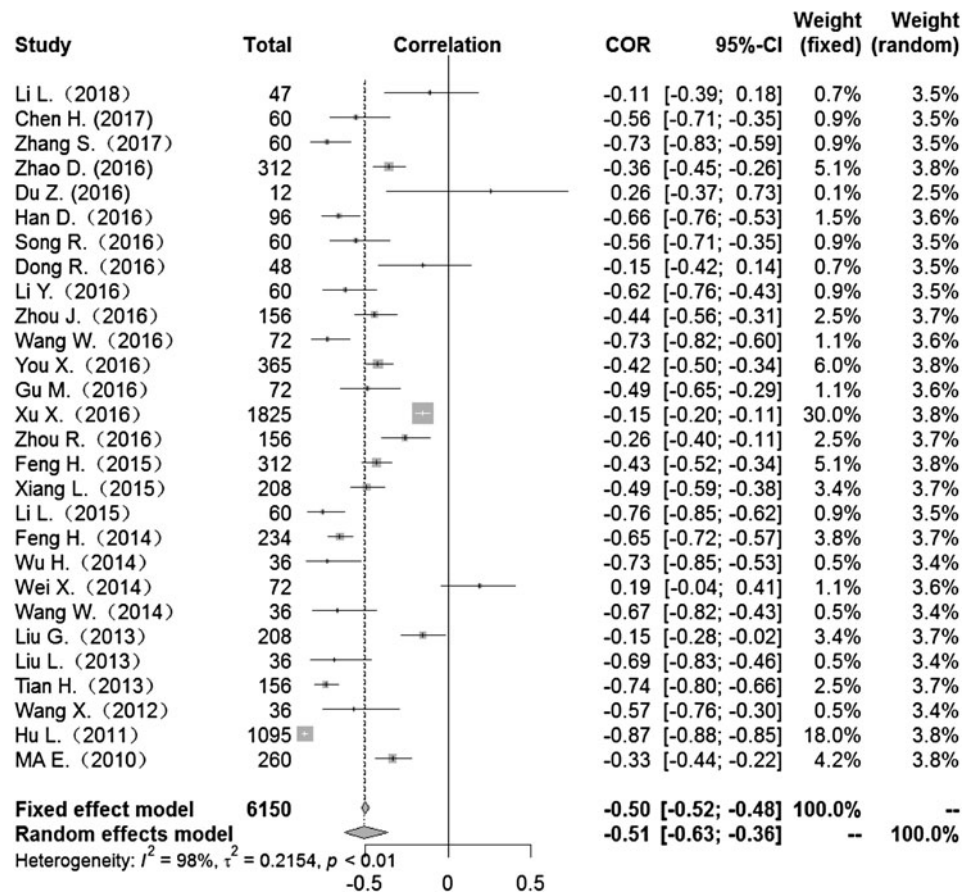


Fig. 5. Forest plot of the correlation between mean air pressure and incidence of HFMD. COR, correlation coefficient; CI, confidence interval.

were 0.25 (0.09–0.41) and 0.21 (–0.17 to 0.54) higher than the values of the other groups.

In subgroup analysis by regional climate, the studies of subtropical climate showed a slightly lower COR than the non-stratified group in relation to all the meteorological factors except average relative humidity, and the association of hours of sunshine with HFMD was not statistically significant and showed less heterogeneity ($I^2 = 19.7\%$, $P = 0.003$). The studies of tropical climate found no statistically significant correlation between the incidence of HFMD and any of the meteorological factors. The results of subgroup analysis based on exposed time resolution (climate group) were consistent with those without stratification, as shown in Table 4 (Table 5).

Sensitivity analysis and publication bias

Sensitivity analyses were performed to evaluate the effect of each study on the pooled results by excluding single studies sequentially. The findings showed that the stability of results not significantly differ after exclusion of individual studies. Funnel plot asymmetry was observed for studies of rainfall and mean temperature (Fig. 13). The funnel plots of other meteorological factors are shown in Table 6 (Figs 10–12). Egger's test was used to assess funnel plot asymmetry, as shown in Table 6. No publication bias existed in the meta-analysis.

Discussion

The current study found associations between meteorological factors and HFMD and indicated that these factors play an

important role in the occurrence of HFMD. The COR for mean temperature was 0.52 (95% CI 0.42–0.60), that for mean maximum temperature was 0.43 (95% CI 0.23–0.59). CORs for mean minimum temperature, rainfall, mean relative humidity and sunshine were 0.43 (95% CI 0.23–0.60), 0.27 (95% CI 0.19–0.35), 0.19 (95% CI 0.02–0.35) and 0.19 (95% CI 0.11–0.27), respectively. These meteorological factors showed positive correlations with HFMD. However, mean air pressure was negatively correlated with HFMD, while mean wind speed showed no significant association (COR 0.10; 95% CI –0.03 to 0.23). The mechanism of meteorological factors on HFMD remains unclear. Possible reasons to explain these findings may be that, first, elevated temperatures contribute to the survival, reproduction and transmission of enterovirus in the outside environment [63]. There is also a threshold for the influence of temperature on the incidence of foot and mouth disease [5]. With increases in relative humidity and total rainfall, HFMD-causative pathogens are more likely to adhere to the surfaces of objects in the environment, and the probability of human contact with infectious agents increases [64, 65]. Decreases in air pressure result in lowered immunity in humans, thus increasing the risk of disease [66]. With decreases in the duration of sunshine, the time people spend in outdoor activities is reduced, thus reducing the chance of patient contacts [67]. Although the mechanism is not clear, our study examines the association between weather factors and HFMD, indicating that weather factors affect the incidence of HFMD infection.

The results of this study were consistent with the majority of research findings. However, a study conducted by Wei *et al.* [12] reported that the average temperature had a negative

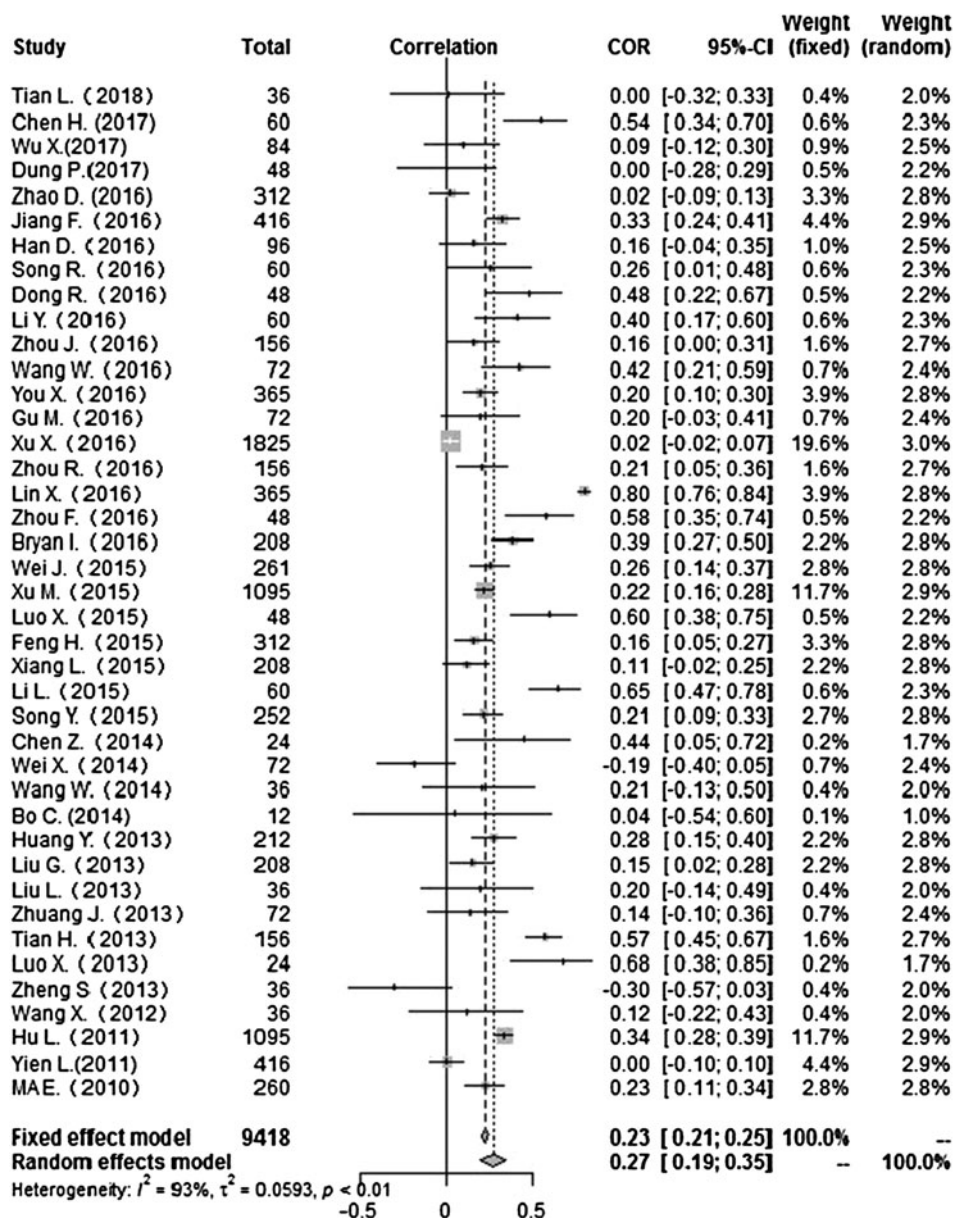


Fig. 6. Forest plot of the correlation between rainfall and incidence of HFMD. COR, correlation coefficient; CI, confidence interval.

correlation with HFMD incidence ($r = -0.36$, $P = 0.005$), a finding that might be accounted for by a gap between the start time of the study and the establishment and improvement of the HFMD surveillance system [68]. In addition, most of the results of Wang *et al.* [52] were not statistically significant. Therefore, we should be cautious in interpretation of this and other studies to prevent over-generalisation and drawing the wrong conclusion. There was no significant correlation in the present study between the average wind speed and the incidence of HFMD; although this finding was consistent with the conclusion of most of the other studies, the COR was small and conclusions should not be arbitrarily drawn.

In subgroup analysis, no statistical significance was reported between mean relative humidity and subgroup of days. The same pattern was reported for hours of sunshine. It is possible that different time scales have an impact on the results of the study; while on the other hand, the effect was non-significant among the larger sample size studies. On the time scale, there

was a lag effect in the subgroup of weeks, and there were seasonal problems in the monthly subgroup, all of which should be considered. It was concluded that time scales might be the factors affecting heterogeneity. As shown in Table 5, we found statistically significant association between meteorological factors and incidence of HFMD in subtropical and temperate regions. The subtropical and temperate climates are considered as those that are more suitable for the survival and reproduction of enteroviruses. Individuals living in these climates may participate in more outdoor activities, thereby increasing their exposure to pathogens [69, 70]. In the tropics, due to the existence of threshold, the excessive temperature may inhibit the survival and reproduction of the virus, thus reducing the opportunity for disease infection [5, 63].

The strength of our study is based on its design as a meta-analysis; this was the first meta-analysis to examine correlations between eight meteorological factors and the incidence of HFMD. We observed that some meteorological factors such as temperature, air pressure, duration of sunshine, humidity and

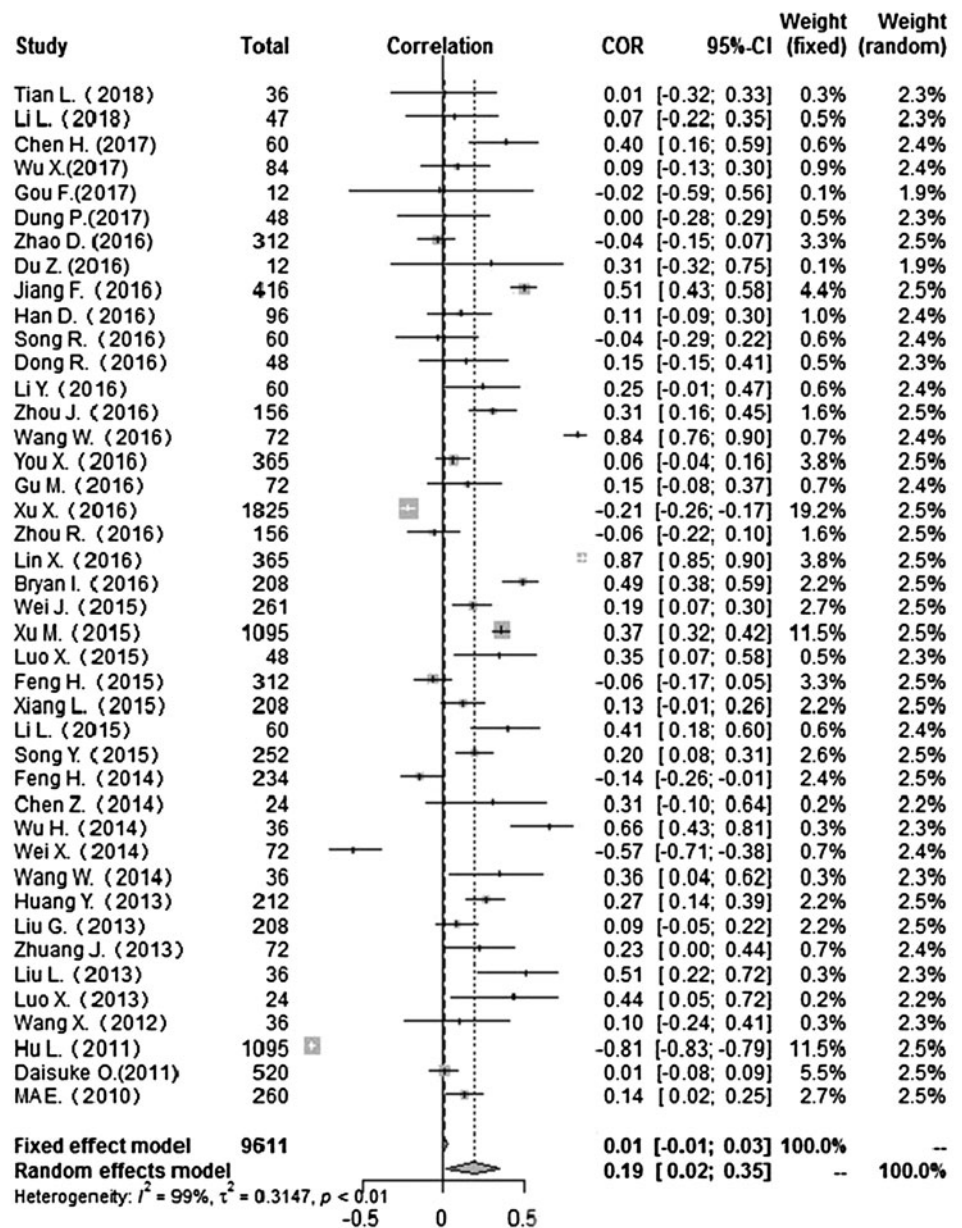


Fig. 7. Forest plot of the correlation between mean relative humidity and incidence of HFMD. COR, correlation coefficient; CI, confidence interval.

rainfall might be risk factors for HFMD and confirmed that these meteorological factors might affect the incidence of HFMD to a certain extent, more reliable and power than the conclusions obtained from single studies. As shown in Table 6, we found that publication bias was not statistically significant.

The study has some limitations. First, we found the significant heterogeneity between the studies included in this meta-analysis. All of the included studies were conducted in Southeast and East Asia, especially in China. So differences in regional and analytical methods might result in high heterogeneity in estimates from the literature. Most of the included studies that were conducted in subgroup analysis only analysed time resolution and regional climate. Additional possibilities such as national income should be considered to better understand sources of heterogeneity. The second limitation is that we only considered the eight meteorological factors affecting HFMD, ignoring other factors. In the present study, there were few studies of some of the meteorological factors involved, such as

mean maximum temperature, so the results might be biased. Confirmation and clarification of these findings will require larger sample size and wider research region, such as the studies reviewed were from other Asian countries or throughout the world. Lastly, the studies we examined in this meta-analysis were studies of association. The researches we included were cross-sectional designs that limited the causal inference. The true relationship between meteorological factors and HFMD could be more complex, and there are potential difficulties in accurately measuring complex associations. Therefore, the association between meteorological factors and HFMD might be one of many influencing factors.

In summary, among the eight meteorological factors examined, the average temperature, average maximum temperature, mean minimum temperature, mean air pressure, rainfall, mean relative humidity and sunshine were related to HFMD, indicating that these factors play important roles in the incidence of HFMD. However, only eight major meteorological factors were analysed

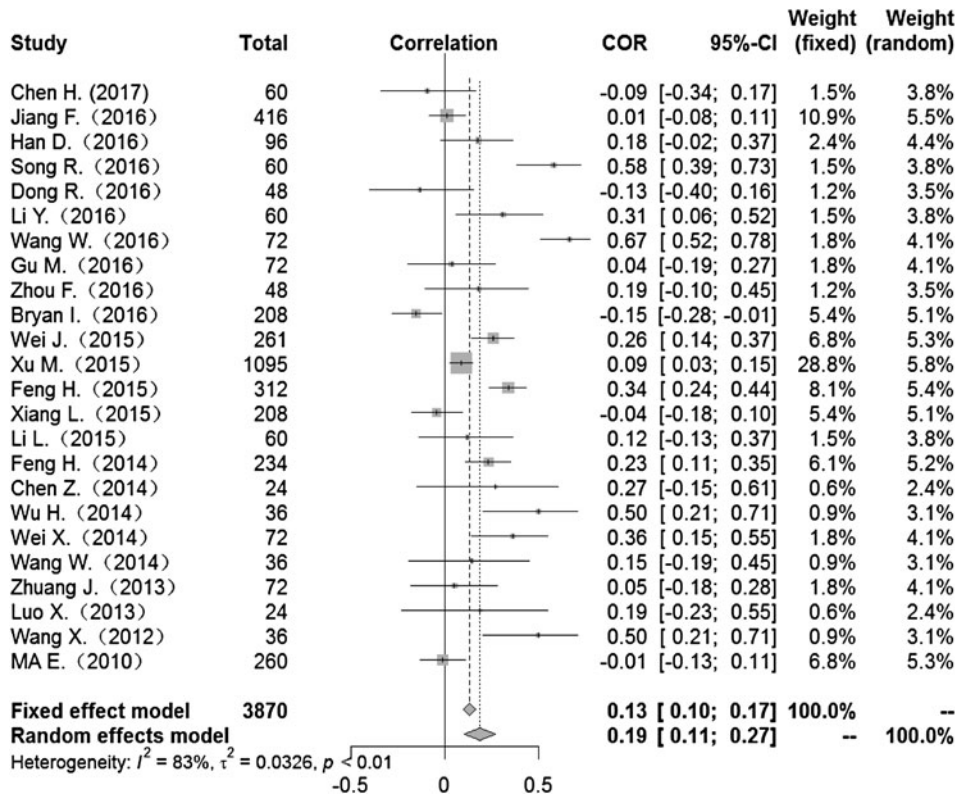


Fig. 8. Forest plot of the correlation between hours of sunshine and incidence of HFMD. COR, correlation coefficient; CI, confidence interval.

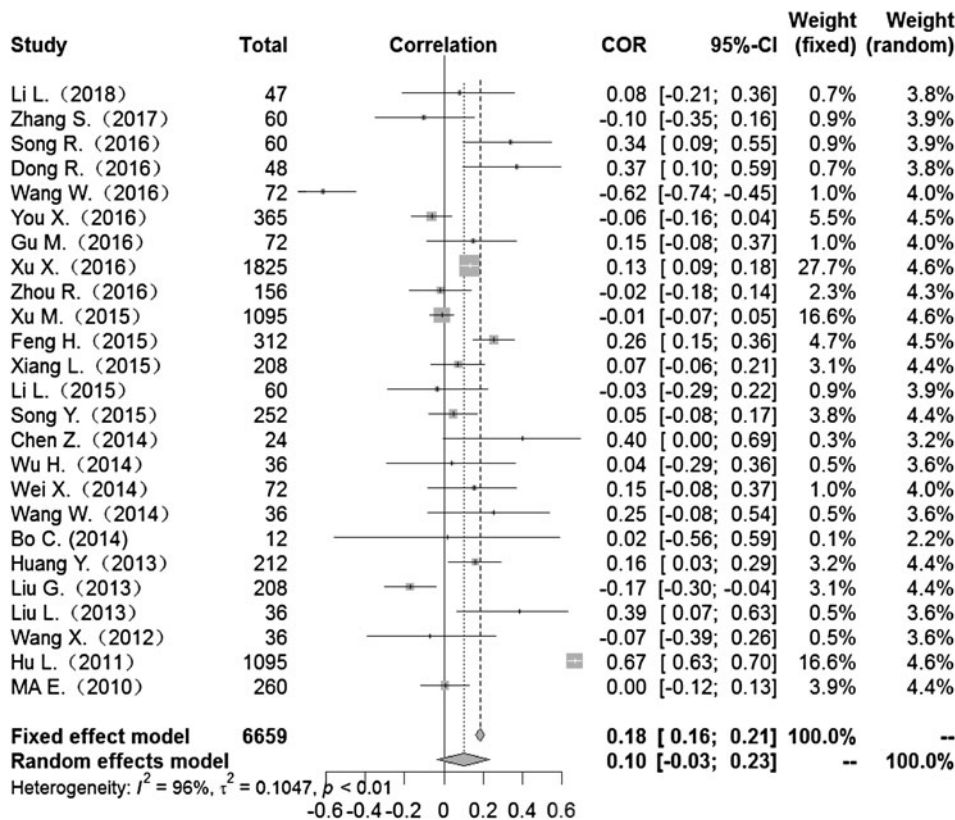


Fig. 9. Forest plot of the correlation between mean wind speed and incidence of HFMD. COR, correlation coefficient; CI, confidence interval.

Table 3. Meta-analysis of the correlation between meteorological factors and HFMD

| Meteorological factors | No. of studies | I^2 (P-value) | COR (95%CI) |
|-------------------------------|----------------|-----------------|------------------------|
| Mean temperature (°C) | 49 | 97% (P = 0.000) | 0.52 (0.42–0.60) |
| Mean maximum temperature (°C) | 15 | 98% (P = 0.000) | 0.43 (0.23–0.59) |
| Mean minimum temperature (°C) | 15 | 98% (P = 0.000) | 0.43 (0.23–0.60) |
| Mean air pressure (kPa) | 28 | 98% (P = 0.000) | –0.51 (–0.63 to –0.36) |
| Rainfall (mm) | 41 | 93% (P = 0.000) | 0.27 (0.19–0.35) |
| Average relative humidity (%) | 42 | 99% (P = 0.000) | 0.19 (0.02–0.35) |
| Hours of sunshine (hour) | 24 | 93% (P = 0.000) | 0.19 (0.11–0.27) |
| Mean wind speed (m/s) | 25 | 96% (P = 0.000) | 0.10 (–0.03 to 0.23)* |

*No statistical significance, $P > 0.05$; COR, correlation coefficient.

Table 4. Subgroup analysis of the correlation between meteorological factors and HFMD (time resolution)

| Meteorological factors | No. of studies | Month | No. of studies | Week | No. of studies | Day |
|-------------------------------|----------------|------------------------|----------------|------------------------|----------------|--------------------------|
| Mean temperature (°C) | 28 | 0.50 (0.37–0.61) | 16 | 0.48 (0.34–0.59) | 5 | 0.70 (0.40–0.86) |
| Mean maximum temperature (°C) | 4 | 0.54 (0.30–0.71) | 10 | 0.33 (0.17–0.48) | 1 | 0.79 (0.77–0.81) |
| Mean minimum temperature (°C) | 4 | 0.61 (0.35–0.78) | 10 | 0.31 (0.11–0.48) | 1 | 0.77 (0.74–0.79) |
| Mean air pressure (kPa) | 15 | –0.56 (–0.67 to –0.42) | 10 | –0.43 (–0.54 to –0.30) | 3 | –0.57 (–0.89 to –0.16) |
| Rainfall (mm) | 22 | 0.28 (0.16–0.39) | 14 | 0.22 (0.14–0.30) | 5 | 0.36 (0.09–0.58) |
| Average relative humidity (%) | 22 | 0.25 (0.09–0.41) | 15 | 0.15 (0.03, 0.26) | 5 | 0.09(–0.55 to 0.66) * |
| Hours of sunshine (hour) | 16 | 0.26 (0.13–0.38) | 7 | 0.10 (–0.04 to 0.23)* | 1 | 0.09 (0.03–0.15) |
| Mean wind speed (m/s) | 13 | 0.09 (–0.10 to 0.28)* | 8 | 0.06 (–0.04 to 0.15)* | 4 | 0.21 (–0.17 to 0.54)* |

*No statistical significance, $P > 0.05$.

Table 5. Subgroup analysis of the correlation between meteorological factors and HFMD (regional climate)

| Meteorological factors | No. of studies | Subtropical climate | No. of studies | Temperate climate | No. of studies | Tropical climate |
|-------------------------------|----------------|------------------------|----------------|---------------------------|----------------|------------------------|
| Mean temperature (°C) | 22 | 0.44 (0.31–0.55) | 22 | 0.58 (0.44–0.69) | 2 | 0.62 (–0.59 to 0.97)* |
| Mean maximum temperature (°C) | 6 | 0.26 (0.12–0.40) | 8 | 0.58 (0.40–0.72) | 1 | 0.02 (–0.08 to 0.12)* |
| Mean minimum temperature (°C) | 6 | 0.23 (0.03–0.42) | 8 | 0.60 (0.44–0.73) | 1 | –0.01 (–0.11 to 0.08)* |
| Mean air pressure (kPa) | 9 | –0.43 (–0.50 to –0.36) | 16 | –0.53 (–0.71 to –0.34) | 1 | –0.73 (–0.83 to –0.59) |
| Rainfall (mm) | 20 | 0.29 (0.15–0.43) | 16 | 0.26 (0.16–0.35) | 2 | 0.00 (–0.09 to 0.09)* |
| Average relative humidity (%) | 18 | 0.26 (0.07–0.44) | 21 | 0.12 (–0.14 to 0.37) * | 1 | 0.00 (–0.28 to 0.29)* |
| Hours of sunshine (hour) | 9 | 0.00 (–0.08 to 0.08)* | 14 | 0.29 (0.18–0.39) | n.a. | n.a. |
| Mean wind speed (m/s) | 10 | 0.08 (0.00–0.15) | 13 | 0.10 (–0.12 to 0.30) * | 1 | –0.10 (–0.35 to 0.16)* |

*No statistical significance, $P > 0.05$; n.a., data were not searched.

in this study. HFMD is a multifactorial disease that may be affected by additional meteorological factors (such as evaporation, water vapour pressure and radiation). Further analyses should examine various comprehensive indicators.

In conclusion, the results of this meta-analysis provide epidemiological evidence that meteorological factors (such as temperature and air pressure) may increase the incidence of HFMD in the Asia-Pacific regions. Further research should be

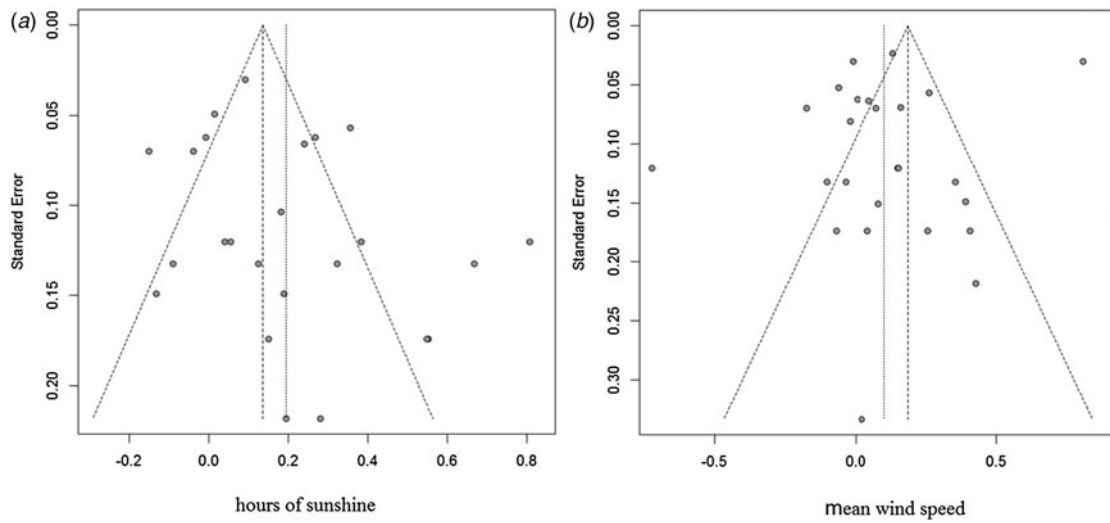


Fig. 10. Funnel plots of hours of sunshine and mean wind speed.

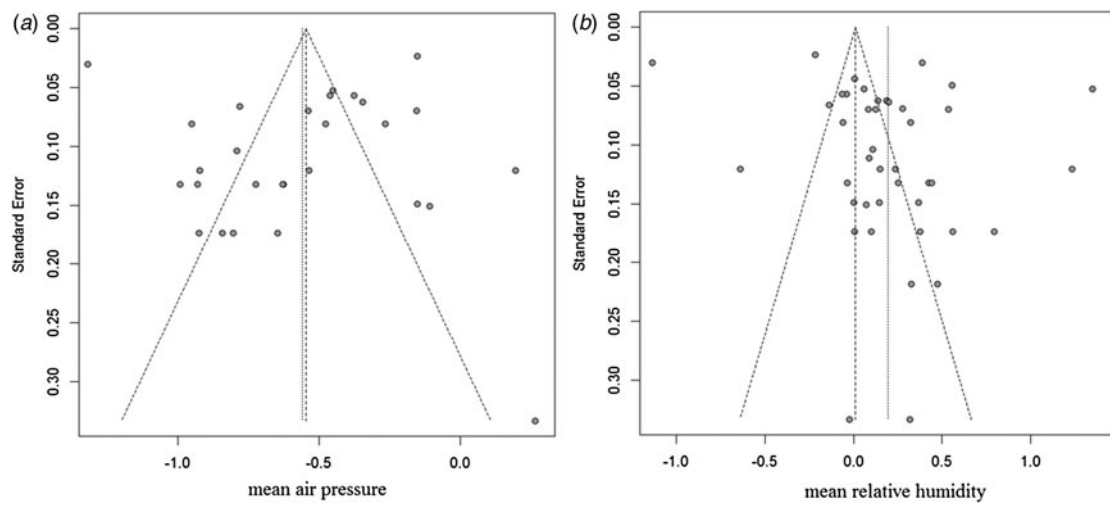


Fig. 11. Funnel plots of mean air pressure and mean relative humidity.

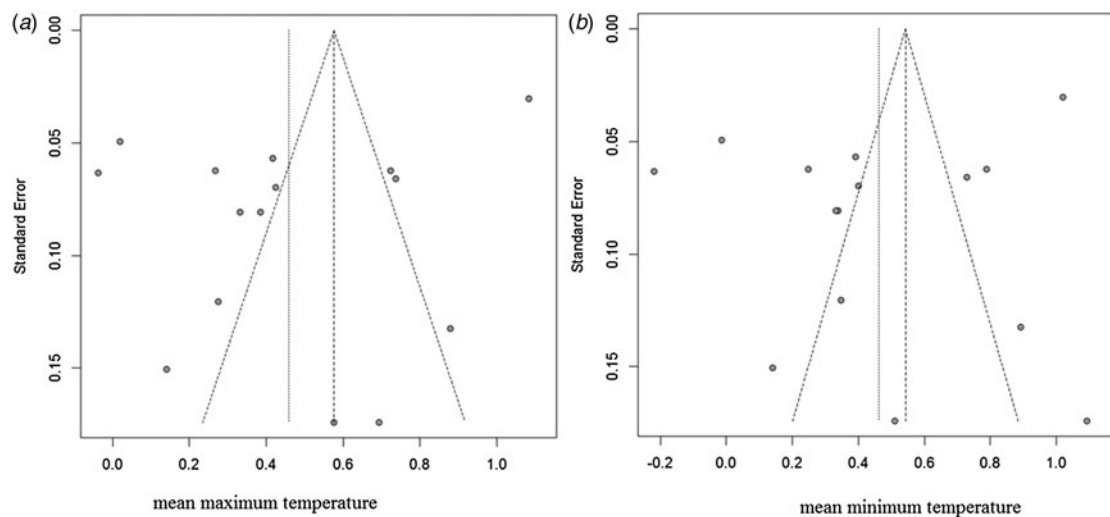


Fig. 12. Funnel plots of mean maximum temperature and mean minimum temperature.

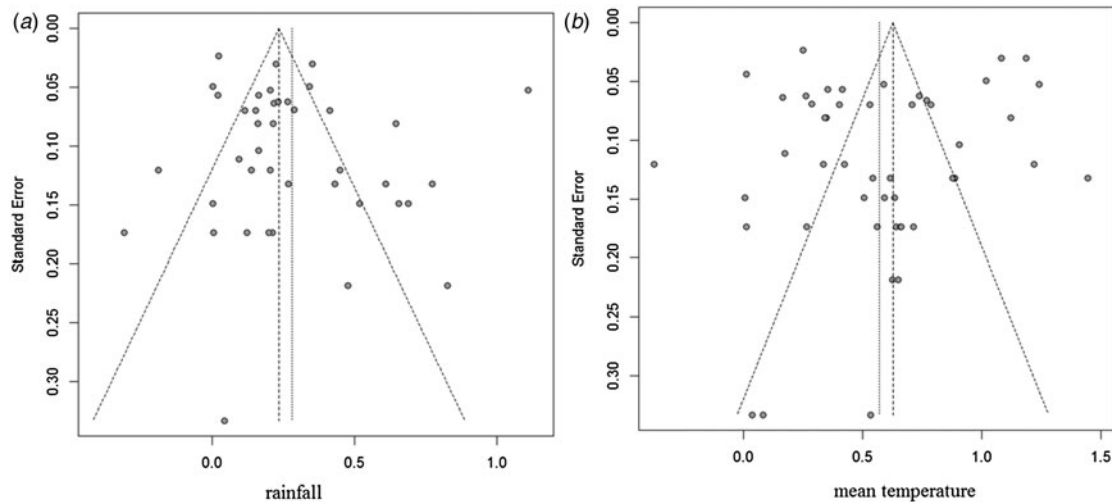



Fig. 13. Funnel plots of rainfall and mean temperature.

Table 6. The publication bias of meteorological factors

| Meteorological factors | Egger's test | |
|-------------------------------|--------------|---------|
| | P-value | t-Value |
| Mean temperature (°C) | 0.51 | -0.66 |
| Mean maximum temperature (°C) | 0.12 | -1.64 |
| Mean minimum temperature (°C) | 0.23 | -1.25 |
| Mean air pressure (kPa) | 0.84 | -0.20 |
| Rainfall (mm) | 0.25 | 1.17 |
| Average relative humidity (%) | 0.05 | 2.01 |
| Hours of sunshine (hour) | 0.12 | 1.60 |
| Mean wind speed (m/) | 0.29 | -1.90 |

performed to explain clearly the correlation between meteorological factors and HFMD in other areas of the world, outside the Asia-Pacific region. At the same time, monitoring these meteorological factors would play a warning role in the occurrence and prevalence of HFMD and could provide information useful in the development of prevention and control measures for HFMD, particularly in subtropical and temperate climates.

Author ORCIDs.  Chunxiao Duan 0000-0002-2023-1733
Donglei Wang 0000-0002-5888-7439

Financial support. Chinese National Natural Fund (81573258); Science Technology Demonstration Project for Emerging Infectious Diseases Control and Prevention (BE2015714); Jiangsu Provincial Six Talent Peak (WSN-002); Jiangsu Provincial Key Medical Discipline (ZDXKA2016008).

Conflict of interest. None.

References

1. **World Health Organization** (2011) A Guide to Clinical Management and Public Health Response for Hand, Foot and Mouth disease (HFMD).
2. **Hii YL, Rocklöv J and Ng N** (2011) Short term effects of weather on hand, foot and mouth disease. *PLoS ONE* **6**, e16796.
3. **Wan JF, Zhu LY and Liu H** (2008) Epidemiological analysis of hand, foot and mouth disease (EV71 infection) in Fuyang City. *Anhui Medical Journal* **29**, 344–345. doi: 10.3969/j.issn.1000-0399.2008.04.003.
4. **Sun H** (2015) National epidemic situation of notifiable infectious diseases in 2014. *Jilin Medical Information* **31**, 26–27.
5. **Sumi A et al.** (2017) Association between meteorological factors and reported cases of hand, foot, and mouth disease from 2000 to 2015 in Japan. *Epidemiology & Infection* **145**, 1.
6. **Nguyen HX et al.** (2017) Temporal and spatial analysis of hand, foot, and mouth disease in relation to climate factors: a study in the Mekong Delta region, Vietnam. *Science of the Total Environment* **581**, 766–772.
7. **Wu Y et al.** (2010) The largest outbreak of hand; foot and mouth disease in Singapore in 2008: the role of enterovirus 71 and coxsackievirus A strains. *International Journal of Infectious Diseases* **14**, e1076.
8. **Carlton EJ et al.** (2016) A systematic review and meta-analysis of ambient temperature and diarrhoeal diseases. *International Journal of Epidemiology* **45**, 117.
9. **Zhao D et al.** (2016) Impact of weather factors on hand, foot and mouth disease, and its role in short-term incidence trend forecast in Huainan City, Anhui Province. *International Journal of Biometeorology* **61**, 1–9.
10. **Xu XN, Wang JY and Li S** (2016) Study on lag effect of meteorological factors and hand-foot-mouth disease in Jiayuguan city, Gansu Province. *Chinese Journal of Public Health Management* **32**, 312–314. doi: 10.19568/j.cnki.23-1318.2016.03.008.
11. **Du Z et al.** (2016) The threshold effects of meteorological factors on hand, foot, and mouth disease (HFMD) in China, 2011. *Scientific Reports* **6**, 36351.
12. **Wei XJ and Zhang XL** (2014) Study on the correlation of key infectious diseases and climate in Linyi city and analysis of prediction model. *Journal of Community Medicine* **12**, 24–27.
13. **Chen HR et al.** (2017) Development of a risk prediction model for hand-foot-mouth disease based on meteorological factors. *Journal of Third Military Medical University* **39**, 1292–1297. doi: 10.16016/j.1000-5404.201701138.
14. **Higgins JP and Green S** (2011) Cochrane handbook for systematic reviews of interventions. *Naunyn-Schmiedeberg's Archiv für Experimentelle Pathologie und Pharmakologie* **5**, S38.
15. **Atkins D et al.** (2004) Systems for grading the quality of evidence and the strength of recommendations I: critical appraisal of existing approaches The GRADE Working Group. *BMC Health Services Research* **4**, 38. doi: 10.1186/1472-6963-4-38.
16. **Macfarlane TV, Glenny AM and Worthington HV** (2001) Systematic review of population-based epidemiological studies of oro-facial pain. *Journal of Dentistry* **29**, 451–467.

17. Song RL *et al.* (2016) Analysis of the incidence of hand foot and mouth disease in Zhengzhou City between 2010 and June of 2014. *Modern Preventive Medicine* **43**, 1119–1123.
18. Tian L *et al.* (2018) Spatio-temporal analysis of the relationship between meteorological factors and hand-foot-mouth disease in Beijing, China. *BMC Infectious Diseases* **18**, 158. doi: 10.1186/s12879-018-3071-3.
19. Gou F *et al.* (2017) Socio-ecological factors and hand, foot and mouth disease in dry climate regions: a Bayesian spatial approach in Gansu, China. *International Journal of Biometeorology* **61**, 137–147. doi: 10.1007/s00484-016-1197-9.
20. Phung D *et al.* (2017) Spatiotemporal variation of hand-foot-mouth disease in relation to socioecological factors: a multiple-province analysis in Vietnam. *Science of the Total Environment* **610**, 983–991.
21. Onozuka D and Hashizume M (2011) The influence of temperature and humidity on the incidence of hand, foot, and mouth disease in Japan. *Science of the Total Environment* **410**, 119–125.
22. Wu X *et al.* (2017) Spatio-temporal clustering analysis and its determinants of hand, foot and mouth disease in Hunan, China, 2009–2015. *BMC Infectious Diseases* **17**, 645. doi: 10.1186/s12879-017-2742-9.
23. Bo YC *et al.* (2014) Using an autologistic regression model to identify spatial risk factors and spatial risk patterns of hand, foot and mouth disease (HFMD) in Mainland China. *BMC Public Health* **14**, 358. doi: 10.1186/1471-2458-14-358.
24. Ji Y *et al.* (2012) Epidemiology of hand, foot and mouth disease in mainland of China, 2011. *Disease Surveillance* **27**, 676–679.
25. Kim BI *et al.* (2016) Effect of climatic factors on hand, foot, and mouth disease in South Korea, 2010–2013. *PLoS ONE* **11**, e0157500.
26. Rothman K, Greenland S and Lash T (2008) *Modern Epidemiology*, 3rd Edn. Philadelphia: Lippincott Williams & Wilkins, pp. 92–93.
27. Borenstein M *et al.* (2009) *Introduction to Meta-Analysis*, 1st Edn. Chichester: John Wiley & Sons Ltd, pp. 41–43.
28. Jiang WH *et al.* (2011) Application of meta package of R in the meta-analysis. *The Journal of Evidence-Based Medicine* **11**, 305–309.
29. Hedges LV and Olkin I (1985) Statistical methods for meta-analysis. *New Directions for Program Evaluation* **1984**, 25–42.
30. Li L *et al.* (2018) A spatiotemporal mixed model to assess the influence of environmental and socioeconomic factors on the incidence of hand, foot and mouth disease. *BMC Public Health* **18**, 274. doi: 10.1186/s12889-018-5169-3.
31. Zhang SL and Wang XF (2017) Epidemiological characteristics, etiological pathogen and meteorological factors analysis of hand, foot and mouth disease (HFMD) in Western Hainan Province, China, 2010–2016. *Biomedical Research – India* **28**, 5479–5483.
32. Du Z *et al.* (2017) Predicting the hand, foot, and mouth disease incidence using search engine query data and climate variables: an ecological study in Guangdong, China. *British Medical Journal Open* **7**, e016263.
33. Jiang FC *et al.* (2016) Meteorological factors affect the hand, foot, and mouth disease epidemic in Qingdao, China, 2007–2014. *Epidemiology and Infection* **144**, 2354–2362. doi: 10.1017/s0950268816000601.
34. Han DB (2016) Study on Relationship Between Morbidity of Hand-Foot-Mouth Disease with Meteorological Factors and Flood Events in Shandong Province, 2007–2014 (*Dissertation*). Shandong University, Jinan, CHN, 69pp.
35. Dong RR and Wang Y (2016) Investigation of the incidence of hand foot and mouth disease in children in Xinzheng city and the correlation analysis with climatic factors. *Chinese Journal of Control of Endemic Diseases* **31**, 1059–1059.
36. You XX *et al.* (2016) Analysis of the correlation between the incidence of hand foot and mouth disease and meteorological factors in Kunming, Yunnan Province, 2014. *Journal of Dermatology and Venereology* **38**, 284–286. doi: 10.3969/j.issn.1002-1310.2016.04.018.
37. Zhou J and Gao W (2017) Correlation between hand-foot-mouth disease and meteorological factors in Pudong Shanghai. *Journal of Environmental Hygiene* **7**, 262–266. doi: 10.13421/j.cnki.hjwsxzz.2017.04.002.
38. Gu MH *et al.* (2016) Relationship between epidemic trend of hand-foot-mouth disease and meteorological factors in Jiangyin City, Jiangsu Province. *Occupation and Health* **32**, 3410–3412. doi: 10.13329/j.cnki.zyyjk.2016.1064.
39. Zhou R, Jiang XM and Han DL (2016) Analysis of meteorological factors of different levels of HFMD incidence in Chengdu City, Sichuan Province. *Journal of Preventive Medicine Information* **32**, 1024–1026.
40. Lin XY, Zhao SY and Qi ZH (2016) Current characteristics of hand-foot-mouth disease and relationship with meteorological factors in Hangzhou in 2014. *Chinese Journal of General Practice* **14**, 1153–1155. doi: 10.16766/j.cnki.issn.1674-4152.2016.07.030.
41. Zhou F and Yu Y (2016) Study on relationship between climatic factors and HFMD in Qixia district of Nanjing during 2011 and 2014. *Medicine and Society* **29**, 54–56. doi: 10.13723/j.yxysh.2016.08.016.
42. Luo XF *et al.* (2015) Analysis of seasonal characteristics of hand foot and mouth disease by using the method of concentration, circular distribution and meteorological factors in Yuexiu District, Guangzhou, 2009–2013. *Chinese Journal of Health Statistics* **32**, 823–824.
43. Xu M *et al.* (2015) Non-linear association between exposure to ambient temperature and children's hand-foot-and-mouth disease in Beijing, China. *PLoS ONE* **10**, e0126171.
44. Feng HF *et al.* (2015) Effects of meteorological factors on occurrence of HFMD using time series analysis. *Journal of Zhengzhou University (Medical Sciences)* **50**, 171–176. doi: 10.13705/j.issn.1671-6825.2015.02.007.
45. Xiang LH *et al.* (2015) The model of back-propagation neural network about meteorological factors and hand-foot-mouth disease in Baoshan District, Shanghai City. *Chinese Journal of Disease Control & Prevention* **19**, 138–141. doi: 10.16462/j.cnki.zhjbjkz.2015.02.009.
46. Li LL *et al.* (2015) Relationship between meteorological factors and incidence of hand-foot-mouth disease in Fangshan District of Beijing. *China Tropical Medicine* **15**, 45–48. doi: 10.13604/j.cnki.46-1064/r.2015.01.016.
47. Song Y *et al.* (2015) Time series analyses of hand, foot and mouth disease integrating weather variables. *PLoS ONE* **10**, e0117296.
48. Feng H *et al.* (2014) Time series analysis of hand-foot-mouth disease hospitalization in Zhengzhou: establishment of forecasting models using climate variables as predictors. *PLoS ONE* **9**, e87916.
49. Chen Z *et al.* (2015) Epidemiological profiles of hand, foot, and mouth disease, including meteorological factors, in Suzhou, China. *Archives of Virology* **160**, 315–321. doi: 10.1007/s00705-014-2294-x.
50. Wu HC (2014) Research of Hand, Foot and Mouth Disease in Laiwu About Epidemic Characteristics and Correlation with Meteorological Factors (*Dissertation*). Taishan Medical University, Taian, CHN, 49pp.
51. Shi ZD, Wang HY and Wang JK (2014) Association of atmospheric temperature with incidence trend and cluster of hand, foot and mouth disease. *Chinese Journal of Public Health* **30**, 1586–1588.
52. Wang WM *et al.* (2014) Correlation between meteorological factors and incidence of hand-foot-mouth disease in Kunshan, Jiangsu Province. *China Tropical Medicine* **14**, 223–224. doi: 10.13604/j.cnki.46-1064/r.2014.02.026.
53. Huang Y *et al.* (2013) Effect of meteorological variables on the incidence of hand, foot, and mouth disease in children: a time-series analysis in Guangzhou, China. *BMC Infectious Diseases* **13**, 134–134.
54. Liu L *et al.* (2013) Relationship between meteorological factors and hand foot and mouth disease in Shijiazhuang, Hebei Province. *Chinese General Practice* **16**, 326–328.
55. Zhuang JL, Cai EM and Li Y (2012) Relationship between climatic factors and incidence of hand-foot-mouth disease in Changning District, Shanghai. *China Tropical Medicine* **13**, 910–912. doi: 10.13604/j.cnki.46-1064/r.2013.07.041.
56. Tian H, Yang PR and Ju ZF (2013) Effect of meteorological conditions on occurrence of hand-foot-mouth disease and the application of prediction model. *Chinese Journal of School Health* **34**, 451–453. doi: 10.16835/j.cnki.1000-9817.2013.04.024.
57. Liu LY *et al.* (2013) Study on the correlation between hand-foot-mouth disease and temperature, humidity in Renqiu of Hebei Province. *Chinese Journal of Primary Medicine and Pharmacy* **20**, 3684–3686. doi: 10.3760/cma.j.issn.1008-6706.2013.24.002.
58. Luo XF *et al.* (2013) Correlation analysis of 2010~2011 in, Guangzhou City Yuexiu District hand foot and mouth disease incidence and the meteorological factors and air pollution index. *China Journal of Pharmaceutical Economics* **9**, 82–184.

59. **Zheng S *et al.*** (2014) Epidemiological features of hand-foot-and-mouth disease in Shenzhen, China from 2008 to 2010. *Epidemiology & Infection* **142**, 1751–1762.
60. **Wang XG *et al.*** (2012) Analysis on relationship between climatic factors and HFMD, Liaocheng City, 2009–2011. *Preventive Medicine Tribune* **18**, 657–658. doi: 10.16406/j.pmt.issn.1672-9153.2012.09.036.
61. **Hu LL and Dong JR** (2011) The relationship between the epidemic of hand foot and mouth disease and meteorological conditions in Liangzhou District of Wuwei City, Gansu Province. *Gansu Science and Technology* **27**, 184–185.
62. **Ma E *et al.*** (2010) Is hand, foot and mouth disease associated with meteorological parameters? *Epidemiology and Infection* **138**, 1779–1788. doi: 10.1017/s0950268810002256.
63. **Salo RJ and Cliver DO** (1976) Effect of acid pH, salts, and temperature on the infectivity and physical integrity of enteroviruses. *Archives of Virology* **52**, 269.
64. **Yeager JG and O'Brien RT** (1979) Enterovirus inactivation in soil. *Applied & Environmental Microbiology* **38**, 694.
65. **Cheng J *et al.*** (2014) Associations between extreme precipitation and childhood hand, foot and mouth disease in urban and rural areas in Hefei, China. *Science of the Total Environment* **497–498**, 484–490.
66. **Maes M and De MF** (2000) Relationships of climatic data to immune and hematologic variables in normal human. *Neuro Endocrinology Letters* **21**, 127.
67. **Liu W *et al.*** (2015) Spatiotemporal dynamics of hand-foot-mouth disease and its relationship with meteorological factors in Jiangsu Province, China. *PLoS ONE* **10**, e0131311.
68. **Du ZC, Zhang WJ and Hao YT** (2016) Meta analysis of the correlation between the meteorological factors and the incidence of hand foot and mouth disease in China. *Chinese Journal of Health Statistics* **33**, 803–805.
69. **Suminski RR *et al.*** (2008) Meteorological conditions are associated with physical activities performed in open-air settings. *International Journal of Biometeorology* **52**, 189–197.
70. **Bélanger M *et al.*** (2009) Influence of weather conditions and season on physical activity in adolescents. *Annals of Epidemiology* **19**, 180–186.