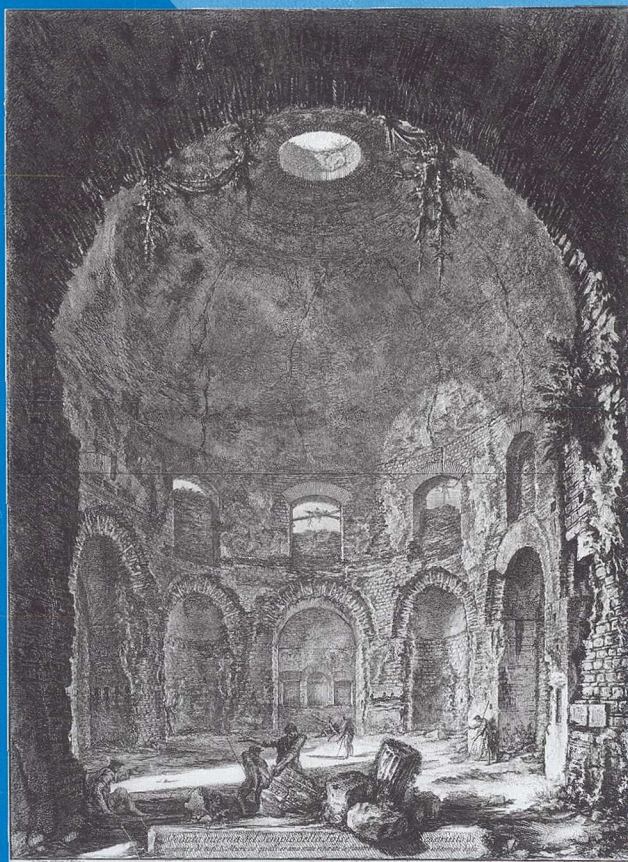


PMILA

Publications of the
■
Modern Language
■
Association
■
of America
■

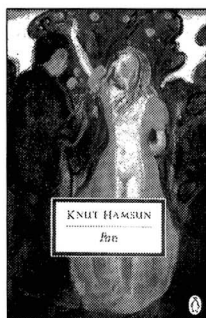


1 9 9 8

OCTOBER

VOLUME 113 ■ NUMBER 5

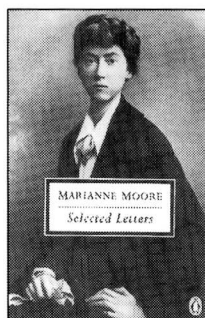
NEW MODERN CLASSICS FROM PENGUIN



KNUT HAMSUN
PAN

From Lieutenant Thomas Glahn's Papers Translated with an Introduction and Notes by Sverre Lynstad A remarkable new translation of one of Hamsun's most seductive stories. "The work contains a harmony found only in the highest types of poetry; it is actually poetry set in prose, and boasts the best traits of each."—Isaac Bashevis Singer.

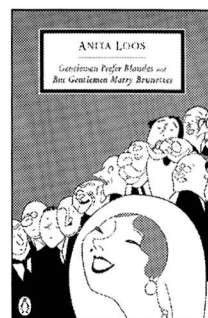
Penguin Classic/20 C 224 pp. 0-14-118067-6 \$9.95



MARIANNE MOORE
THE SELECTED LETTERS
OF MARIANNE MOORE

Edited with an Introduction by Bonnie Costello "This collection does not outdo Moore's poetry, but it complements the poems and exceeds in volume everything else she wrote...the letters are a clear addition to her oeuvre."—Donald Hall, *The Boston Sunday Globe*. Traces the life of one of the architects of modern American poetry through extensive and broad correspondence. A *New York Times* Notable Book.

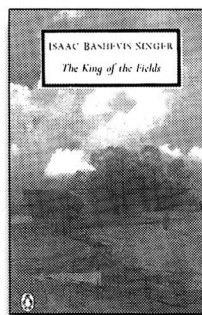
Penguin Classic/20 C 624 pp. 0-14-118120-6 \$15.95



ANITA LOOS
GENTLEMEN
PREFER BLONDES/BUT
GENTLEMEN
MARRY BRUNETTES

Introduction by Regina Barreca The tale that Edith Wharton called "the great American novel" is together at last in a two-in-one volume, beautifully reset, with original hilarious Ralph Barton illustrations restored throughout.

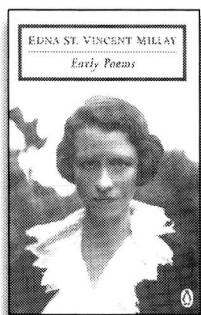
Penguin Classic/20 C 352 pp. 0-14-118069-2 \$12.95



ISAAC BASHEVIS SINGER
THE KING OF THE FIELDS

Translated from the Yiddish by the author From Nobel Prize-winner Isaac Bashevis Singer, an "impassioned narrative art which, with roots in Polish-Jewish tradition, brings universal human conditions to life."—Nobel Prize Committee.

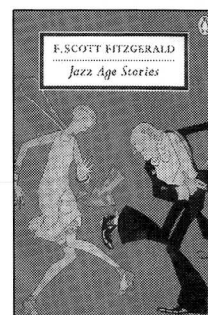
Penguin Classic/20 C 250 pp. 0-14-018668-9 \$11.95



EDNA ST. VINCENT MILLAY
EARLY POEMS

Edited with an Introduction and Notes by Holly Peppe "A sensuous freshness [inundates] the formal music of her work with a vigor and a specificity from beyond itself."—Amy Clampitt, *The New Republic*. Includes *Renascence*, *Second April*, and *A Few Figs from Thistles*.

Penguin Classic/20 C 320 pp. 0-14-118054-4 \$12.95



F. SCOTT FITZGERALD
JAZZ AGE STORIES

Edited with an Introduction by Patrick O'Donnell This new single volume gathers Fitzgerald's first two volumes of short fiction: *Flappers and Philosophers* and *Tales of the Jazz Age*, which together capture unforgettable images of modern America.

Penguin Classic/20 C 400 pp. 0-14-118048-X \$9.95

PENGUIN PUTNAM INC.

ACADEMIC MARKETING DEPT. ♦ 375 HUDSON ST. ♦ NEW YORK, NY 10014-3657

<http://www.penguinputnam.com>

October 1998

PMLA

Publications of the
Modern Language Association
of America

Volume 113, Number 5

Published six times a year by the association

The Modern Language Association of America

Officers for the Year 1998

President: ELAINE SHOWALTER, *Princeton University*
First Vice President: EDWARD W. SAID, *Columbia University*
Second Vice President: LINDA HUTCHEON, *University of Toronto, Saint George Campus*
Executive Director: PHYLLIS FRANKLIN

Executive Council

For the term ending 31 December 1998

FRANCES SMITH FOSTER, *Emory University*
PETER UWE HOHENDAHL, *Cornell University*
FRANK TROMMLER, *University of Pennsylvania*

For the term ending 31 December 1999

HEATHER DUBROW, *University of Wisconsin, Madison*
CATHERINE PORTER, *State University College of New York, Cortland*
EVE KOSOFKY SEDGWICK, *Duke University*
ERIC J. SUNDQUIST, *Northwestern University*

For the term ending 31 December 2000

MARGARET W. FERGUSON, *University of California, Davis*
ROBERT SCHOLES, *Brown University*
GEORGE YUDICE, *New York University*

For the term ending 31 December 2001

DAVID BARTHOLOMAE, *University of Pittsburgh, Pittsburgh*
KIRSTEN M. CHRISTENSEN, *University of Texas, Austin*
VIRGINIA WRIGHT WEXMAN, *University of Illinois, Chicago*
ANTHONY C. YU, *University of Chicago*

Trustees of Invested Funds

JOHN H. D'ARMS, *New York, New York*
CAROLYN G. HEILBRUN, *New York, New York*
MALCOLM B. SMITH (Managing Trustee), *New York, New York*

PMLA (ISSN 0030-8129) is published six times a year, in January, March, May, September, October, and November, by the Modern Language Association of America. Membership in the association is open to persons who are professionally interested in the modern languages and literatures. Annual dues, which include subscription to *PMLA*, are based on members' incomes and are graduated as follows: student members (seven years maximum), \$20; new regular members (first year), \$35; regular members (income under \$15,000), \$25; regular members (income \$15,000–\$20,000), \$40; regular members (income \$20,000–\$30,000), \$50; regular members (income \$30,000–\$40,000), \$65; regular members (income \$40,000–\$50,000), \$75; regular members (income \$50,000–\$60,000), \$85; regular members (income \$60,000–\$70,000), \$95; regular members (income \$70,000–\$80,000), \$105; regular members (income over \$80,000), \$125; joint members (two individuals sharing the same household, who receive one subscription to *PMLA* but two copies of all other publications), add \$20 to dues category of higher-income member; foreign members, same as regular members (use the American-dollar equivalent to ascertain the dues category). Membership applications are available on request.

The subscription price of *PMLA* for libraries and other institutions is \$108. An institutional subscription including a bound volume at the end of the year is \$243, domestic and foreign. Agents deduct four percent as their fee. Single copies of the January, March, May, and October issues can be purchased for \$12 each; the September (Directory) issue is \$50; the November (Program) issue is \$35.

Issues for the current year are available from the Member and Customer Services Office of the association (212 614-6381; membership@mla.org). Claims for undelivered issues will be honored if they are received within six months of the publication date; thereafter the single-issue price will be charged.

For information about the availability of back issues, write or call Periodicals Service Company, 11 Main Street, Germantown, NY 12526-5635 (518 537-4700; <http://www.periodicals.com>). Early and current volumes can be obtained on microfilm from UMI, 300 North Zeeb Road, PO Box 1346, Ann Arbor, MI 48106-1346 (800 521-0600; <http://www.umi.com>).

The office of publication and editorial offices are located at 10 Astor Place, New York, NY 10003-6981 (212 475-9500; pmlasubmissions@mla.org).

All communications concerning membership, including change-of-address notifications, should be sent to the Member and Customer Services Office, MLA, 10 Astor Place, New York, NY 10003-6981 (212 614-6381; membership@mla.org). If a change of address also involves a change of institutional affiliation or a new e-mail address, that office should be informed of this fact at the same time.

Periodicals postage paid at New York, NY, and at additional mailing offices.

©1998 by The Modern Language Association of America. All rights reserved. Printed in the United States of America.

Library of Congress Catalog Card Number 12-32040. United States Postal Service Number 449-660.

POSTMASTER: Send address changes to *PMLA*, Member and Customer Services Office, Modern Language Association of America, 10 Astor Place, New York, NY 10003-6981.

Publications of the Modern Language Association

Published six times a year Indexes: Vols. 1–50, 1935; 51–60, 1945; 51–79, 1964

Editor: MARTHA BANTA, *University of California, Los Angeles*

Managing Editor: JUDY GOULDING

Assistant Editor: ERIC WIRTH

Editorial Assistant: JOHN D. GOLBACH

Advertising Manager and Submissions Associate: ANNABEL SCHNEIDER

Administrative Assistant: ANGEL BUTTS

Editorial Board

GILES B. GUNN, 1998, *University of California, Santa Barbara*

ROBERTA LEE JOHNSON, 1998, *University of Kansas*

ANTON KAES, 1999, *University of California, Berkeley*

CAROL THOMAS NEELY, 1998, *University of Illinois, Urbana*

TILOTTAMA RAJAN, 1999, *University of Western Ontario*

D. N. RODOWICK, 1999, *University of Rochester*

Advisory Committee

MICHAEL AWKWARD, 2000, *University of Pennsylvania*

DANIEL BALDERSTON, 1999, *University of Iowa*

DENNIS BARON, 2001, *University of Illinois, Urbana*

SARAH BECKWITH, 2000, *Duke University*

CHARLES BERGER, 2000, *University of Utah*

LAUREN BERLANT, 2000, *University of Chicago*

CAROL L. BERNSTEIN, 1999, *Bryn Mawr College*

MARC E. BLANCHARD, 1999, *University of California, Davis*

WALTER COHEN, 2000, *Cornell University*

LISA EDE, 1999, *Oregon State University*

ED FOLSOM, 2001, *University of Iowa*

RAE BETH GORDON, 1999, *University of Connecticut, Storrs*

GEORGE B. HUTCHINSON, 1999, *University of Tennessee, Knoxville*

ULLRICH G. LANGER, 1999, *University of Wisconsin, Madison*

TOMISLAV Z. LONGINOVIĆ, 2001, *University of Wisconsin, Madison*

ANGEL G. LOUREIRO, 1999, *University of Massachusetts, Amherst*

TIMOTHY C. MURRAY, 1999, *Cornell University*

WOLFGANG NATTER, 2001, *University of Kentucky*

FELICITY A. NUSSBAUM, 2000, *University of California, Los Angeles*

ANNE LAKE PRESCOTT, 1999, *Barnard College*

JOHN RICHETTI, 2001, *University of Pennsylvania*

MATTHEW C. ROUDANE, 2000, *Georgia State University*

ROBERTA RUBENSTEIN, 2000, *American University*

JEFFREY T. SCHNAPP, 2000, *Stanford University*

DAVID SIMPSON, 2000, *University of California, Davis*

C. LYNNE TATLOCK, 2001, *Washington University*

JEAN-JACQUES THOMAS, 1999, *Duke University*

PRISCILLA L. WALTON, 2001, *Carleton University*

MARC A. WEINER, 2001, *Indiana University, Bloomington*

PHILIP M. WEINSTEIN, 2000, *Swarthmore College*

KATHLEEN E. WELCH, 1999, *University of Oklahoma*

A Statement of Editorial Policy

PMLA welcomes essays of interest to those concerned with the study of language and literature. As the publication of a large and heterogeneous association, the journal is receptive to a variety of topics, whether general or specific, and to all scholarly methods and theoretical perspectives. The ideal *PMLA* essay exemplifies the best of its kind, whatever the kind; addresses a significant problem; draws out clearly the implications of its findings; and engages the attention of its audience through a concise, readable presentation. Manuscripts in languages other than English are accepted for review but must be accompanied by a detailed summary in English (generally of 1,000–1,500 words) and must be translated into English if they are recommended to the Editorial Board. Articles of fewer than 2,500 words or more than 9,000 words are not considered for publication. The word count includes notes but excludes works-cited lists and translations, which should accompany foreign language quotations. The MLA urges its contributors to be sensitive to the social implications of language and to seek wording free of discriminatory overtones.

Only members of the association may submit articles to *PMLA*. Each article submitted is sent to at least one consultant reader and one member of the Advisory Committee. Articles recommended by these readers are then sent to the members of the Editorial Board, who meet periodically with the editor to make final decisions. Until a final decision is reached, the author's name is not made known to consultant readers, to members of the Advisory Committee and the Editorial Board, or to the editor. Because the submission of an article simultaneously to more than one refereed journal can result in duplication of the demanding task of reviewing the manuscript, it is *PMLA*'s policy not to review articles that are under consideration by other journals. An article found to have been simultaneously submitted elsewhere will not be published in *PMLA* even if it has already been accepted for publication by the Editorial Board.

Submissions, prepared according to the *MLA Style Manual and Guide to Scholarly Publishing*, should be sent in duplicate and addressed to the Managing Editor, *PMLA*, Modern Language Association, 10 Astor Place, New York, NY 10003-6981. With each submission please include a self-addressed envelope and enough postage for both copies to be returned. Authors' names should not appear on manuscripts; instead, a cover sheet, with the author's name and address and the title of the article, should accompany each manuscript. Authors should not refer to themselves in the first person in the submitted text or notes if such references would identify them; any necessary references to the author's previous work, for example, should be in the third person.

Criticism in Translation

MLA members are invited to submit to the *PMLA* Editorial Board proposals for translations. Articles, as well as chapters or sections of books that can function as independent units, will be considered. The originals may be in any language. Two types of proposals are welcome: (1) significant scholarship from earlier periods that has not lost its forcefulness and whose retrieval in English in *PMLA* would be a noteworthy event for a broad body of readers or (2) contemporary work of sufficient weight and potential influence to merit the attention of the field as a whole.

A member who wishes to make a proposal should first ascertain that no previous English translation exists. The proposer should then provide the managing editor with the following materials: (1) a photocopy of the original essay, (2) an extended summary of the entire essay in English, (3) an introductory statement of approximately 1,000 words, prepared in accordance with MLA style, that will be published with the essay if the essay is accepted, (4) information on the copyright status of the original (if the translation is accepted for publication, the proposer will be responsible for obtaining permission to print it). In addition, if the proposer wishes to serve as translator of the essay or to designate a translator (who must also be an MLA member), a 1,000-word sample of the translation should be submitted; otherwise the Editorial Board will select a translator.

The translated essays should normally not exceed *PMLA*'s 9,000-word limit. The Editorial Board will approve or decline the proposals, evaluate the quality of the translations, and cooperate with the proposers and translators.

Contents

Special Topic	1070
Forthcoming in <i>PMLA</i>	1070
Editor's Column. Diplomatic Relations	1071
Sublimity and Skepticism in Montaigne <i>David L. Sedley</i>	1079
Drama, Performativity, and Performance <i>W. B. Worthen</i>	1093
The Reconstruction of Whiteness: William Wells Brown's <i>The Escape; or, A Leap for Freedom</i> <i>John Ernest</i>	1108
Forum <i>Letters on PMLA Abroad and PMLA and Graduate Studies</i>	1122
Final Report of the MLA Committee on Professional Employment	1154
Evaluating the Mission, Size, and Composition of Your Doctoral Programs: A Guide 1178	
Forthcoming Meetings and Conferences of General Interest	1188
Index of Advertisers	1189
Professional Notes and Comment	1210
Announcements 1210	
Journal Notes 1214	
Meeting of the MLA Executive Council 1216	
Abstracts	1246
Contents of Volume 113 (1998)	1247

Cover illustration: Giambattista Piranesi (1720–78), Veduta interna del Tempio della Tosse (“Interior View of the Tempio della Tosse”), 1764, etching, 24¹³/₁₆” × 18⁵/₁₆” (63.1 × 46.5 cm). Fine Arts Museums of San Francisco, Achenbach Foundation for Graphic Arts, 1963.30.2968.