

Philips has been a leader in electron microscopy since the pioneering days of 1949. And we have never looked back, always pushing our technology to the cutting edge of what is physically possible. We are fortunate to count many of the world's top scientists, researchers and engineers among our clients. Meeting their critical requirements is our number one priority.

Joining forces with FEI Company in 1997, a pioneer in focussed ion beam technology, strengthened the company. Together, our full range of Philips and FEI brand instruments provides complete solutions for all imaging and microanalytical needs. And our world-wide service and support network ensures maximum reliability and performance.

1999 marks the 50th anniversary of selling our first instrument. A moment to look back with pride and to look forward with confidence as we move into the new millennium.

# Half a Century of Leadership



**FEI Company**  
7451 NW Evergreen Parkway  
Hillsboro, Oregon 97124  
Tel: 503 640 7500  
Fax: 503 640 7509  
E-mail: marcom@eo.ie.philips.nl  
www.feic.com

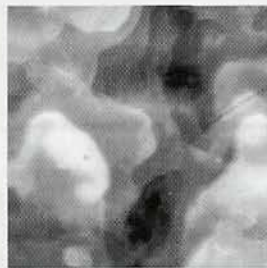
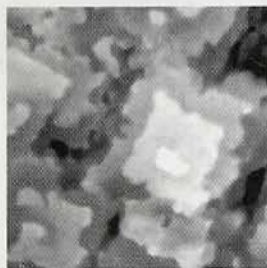


# PHILIPS

*Let's make things better.*



# As Easy As It Looks



PEO at 60°C with evidence of melting clearly shown after 2 minutes.

- ▶ **Based on a Simple PC Interface.**
- ▶ **Intuitive Operation with a Mouse Alone.**
- ▶ **Capable of Imaging Under Either Ambient or High Vacuum and at Both High and Low Temperatures.**
- ▶ **Fully Vibrationally Isolated.**
- ▶ **Capable of Wet or Dry Imaging.**
- ▶ **Variable Gas Pressure/Temperature.**

The new JSPM-4200 is a multipurpose turnkey Scanning Probe Microscope (SPM) capable of imaging using a myriad of different modes and

## NEW - Multi-Environmental

# SPM

## Scanning Probe Microscope

accessories. Imaging modes include STM, STS (Scanning Tunneling Spectroscopy), CITS (Current Imaging Tunneling Microscopy), AFM, LFM (Lateral Force Microscopy), Non-contact Mode AFM, Discrete Contact Mode AFM, Lateral Modulation LFM, MFM (Magnetic Force Microscopy), and Force Modulation Microscopy.

If you would like to learn more about JEOL SPM's please give us a call and arrange for your own hands-on demonstration so that we can prove to you that it really is "As Easy As It looks".

JEOL USA, Inc., 11 Dearborn Road, Peabody, MA 01960  
Tel: 978/535-5900 • Fax: 978/536-2205  
Email: [spm@jeol.com](mailto:spm@jeol.com) • WEB: <http://www.jeol.com>

# JEOL