

THE BRITISH JOURNAL OF PSYCHIATRY

Volume 143

Published monthly

DECEMBER 1983

Founded in 1853 as the *Asylum Journal* and known as the *Journal of Mental Science*
from 1855 to 1963.

EDITOR

Hugh Freeman

ASSOCIATE EDITORS

Martin Roth Kenneth Rawnsley

ASSISTANT EDITORS

Sidney Crown
John Cutting
Gaius Davies
Alan Kerr

Margaret Little
Julian Leff
Henry Rollin
Andrew C. Smith

Philip Snaith
William Spry
Peter Tyrer
Gregor Wilkinson

EDITORIAL MANAGEMENT

Jacqueline Yates

ASSISTANT FOR THE BULLETIN

Alison Campbell

Correspondence, manuscripts, books for review, for both the *Journal* and the *Bulletin* should be addressed to the Editor, 17 Belgrave Square, London SW1X 8PG (Tel 01-235 8857). See inside front cover for further instructions.

Advertising enquiries, correspondence and copy should be addressed to Mr. Peter T. Mell, Advertisement Manager, PTM Professional Publications Ltd, 282 High Street, Sutton, Surrey SM1 1PQ (Tel 01-642 0162 PBX).

Subscriptions for non-members of the College are payable directly to the printers, Headley Brothers Ltd, to whom all queries about missing or faulty copies should be addressed within six months of publication and who also supply on order Special Publications and Gaskell Books.

Annual subscription rates 1983 (12 issues post free)

Inland: Institutions £65.00; Individuals £55.00

Overseas: Institutions £90.00, US\$200.00; Individuals £75.00, US\$165.00

Single copies of the Journal, £6.00, US\$12.00 (post free).

Bargain: Special American private subscription \$45.00 for 12 issues post free, to personal subscribers affirming the Journal is for their own use and naming the institution to which they belong and which already subscribes at the institutional rate. For residents of North America only.

USA Mailing Agents, Expeditors of the Printed Word Ltd., 527 Madison Avenue, Suite 1217, New York, NY 10022. 2nd Class postage paid at New York City, NY. (USPS No. 536-870).

Back issues published in 1982 may be purchased from Headley Brothers Ltd and all previous issues from William Dawson & Sons Ltd, Cannon House, Folkestone, Kent, England (Tel 0303 57421).

Printed by Headley Brothers Ltd, Ashford, Kent TN24 8HH, England (Tel 0233 23131).

© 1983 THE ROYAL COLLEGE OF PSYCHIATRISTS

The Retreat, York

for Psychiatric Illnesses

Founded in 1792 by the Quaker, William Tuke, who established the tradition of concern for patients as individuals The Retreat is a 200-bedded private registered nursing home surrounded by extensive grounds on the outskirts of the historic City of York. It is easily reached by rail and motorways.

Care and treatment is offered for all types of psychiatric illness on the short or long term in a sympathetic and friendly atmosphere. Patients suffering from neuroses, psychoses, alcoholism and dementia are treated by the full-time consultant psychiatrists in surroundings suitable for their individual needs. Outpatient facilities are available by appointment with the consultant medical staff.

The Nursing Home is a registered charity and is able to offer inclusive care in shared accommodation from £27.00 per day or in single rooms at slightly increased charge. The Nursing Home is recognised by the main private patient schemes.

For further details apply to The Medical Director, The Retreat, York YO1 5BN (Telephone 0904 412551).

ACADEMIC PRESS



A Volume in the PERSONALITY AND
PSYCHOPATHOLOGY Series

SYMPTOMATIC AFFECTIVE DISORDERS

**A STUDY OF DEPRESSION
AND MANIA ASSOCIATED
WITH PHYSICAL DISEASE
AND MEDICATION**

F.A. Whitlock
1983, 240pp., \$27.00/£18.00 (UK only)
ISBN: 0-12-747580-X

Most affective disorders, particularly depression, are classified with little regard to such physical causes as brain damage or reactions to various drugs. *Symptomatic Affective Disorders* examines various affective disturbances in physically ill patients. Beginning with an outline of the nature and frequency of these disorders, the book discusses neuroanatomical and biochemical factors that may cause depression or mania when disturbed by disease.

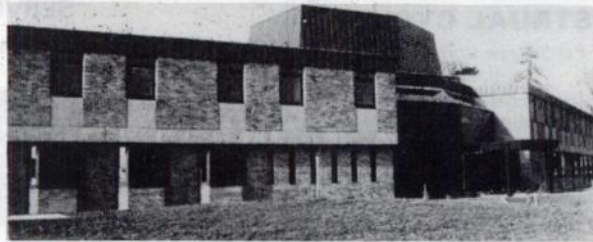
ADOLESCENT AND PRE-ADOLESCENT PSYCHIATRY

John Evans
1982, 520pp., \$39.50/£21.80 (UK only)
0-12-791168-5 (Academic Press)
0-8089-1473-1 (Grune & Stratton)

This book is intended for all those involved in the care and treatment of disturbed youngsters, and will have a special relevance for those beginning their career. It is divided into three parts. The first describes personality and family functioning in the normal, the neurotic and the delinquent youngster. The second describes clinical syndromes. The third deals with brief treatments and longer-term individual psychotherapy as well as family therapy. A strength of this volume is its comprehensive coverage and the way in which themes are developed and constantly cross-referenced to form a coherent picture of the field.

24-28 OVAL ROAD, LONDON, NW1 7DX
111 FIFTH AVENUE, NEW YORK, NY 10003, USA

PRIVATE PSYCHIATRIC TREATMENT



SPENCER HOUSE

A new purpose-built admissions unit
for short-stay treatment.

For further information, write – postage free – to the
Medical Director, FREEPOST, St. Andrew's Hospital, Northampton NN1 5DG.
Telephone (0604) 29696

St. Andrew's Hospital



Handbook of Psychiatry Volume 2

Mental Disorders and Somatic Illness

Edited by **M. H. LADER**

This new volume in the *Handbook of Psychiatry* deals principally with neurology and those medical disorders most closely related to psychiatry.

Contributors: D. P. Birkett; M. R. Bond; J. L. Crammer; J. Cutting; G. W. Fenton; M. F. Folstein; A. H. Ghodse; J. L. Gibbons; K. Granville-Grossman; B. J. Gurland; A. D. Isaacs; R. Kumar; M. H. Lader; P. R. McHugh; C. D. Marsden; H. G. Morgan; I. Oswald; D. Ricks; M. Victor.

Hard covers £30.00 net
Paperback £12.95 net

Methodology in Evaluation of Psychiatric Treatment

Edited by **T. HELGASON**

Intended essentially as a source book for research workers, this composite volume reviews and evaluates the various methods available for quantifying the success of psychiatric treatment, particularly in difficult areas such as social and psychotherapy.

£17.50 net

Historical Origins of the Concept of Neurosis

JOSÉ M. LÓPEZ PIÑERO

Translated by **D. BERRIOS**

Professor López Piñero looks in depth at the historical evolution of the concept of neurosis from the eighteenth century onwards, and demonstrates in detail its dependence upon such fundamental medical concepts as cause, function and regulation.

£17.50 net

CAMBRIDGE UNIVERSITY PRESS



Wiley

THE REAL MENSTRUAL CYCLE

by **D. Asso**, *Department of Psychology, University of London Goldsmiths' College*

This book provides the first fully documented account of the present knowledge of the physiological, bodily, psychological and behavioural elements of the whole cycle. The wide and perpetual influence of the cycle is made clear and the biological and learned mechanisms of its effects are explored. The book will therefore be useful to many groups of specialists and interested people.

October '83 approx. 208pp
0471 90043 5 (cloth) approx. \$37.00/£18.50
0471 90175 X (paper) approx. \$13.90/£6.95

THEORY AND PRACTICE OF PSYCHIATRIC REHABILITATION

edited by **F.N. Watts**, *MRC Applied Psychology Unit, Cambridge* and **D.H. Bennett**, *Bethlem Royal and Maudsley Hospitals, London*

This book is concerned with the needs of the psychiatric patient when maintaining or re-acquiring a normal life in the community. It looks at rehabilitation in the specific context of clinical syndromes e.g. schizophrenia, and drug and alcohol abuse. Particular attention is given to social and domestic roles as well as employment, and to the newer forms of community-based rehabilitation.

December '83 approx. 384pp
0471 90147 4 approx. \$39.95/£19.50

BENZODIAZEPINES DIVIDED A Multidisciplinary Review

edited by **M.R. Trimble**, *Department of Psychological Medicine, National Hospital for Nervous Diseases, London*

This book sets out to explore the various aspects of the Benzodiazepine controversy by bringing together experts from several disciplines to discuss the subject from as many different angles as possible. The result is a lively and readable account of the issues currently under debate.

September '83 344pp
0471 90199 7 \$34.00/£18.00

BODY MOVEMENT AND INTERPERSONAL COMMUNICATION

by **P. Bull**, *Department of Psychology, University of York*

September '83 222pp
0471 90069 9 \$24.95/£12.50



John Wiley & Sons Ltd.
Baffins Lane, Chichester
Sussex PO19 1UD, England

THIS IS A SPECIAL MESSAGE
ADDRESSED TO THE MEDICAL
PROFESSION AND TO WORKERS IN
THE PROBATION AND SOCIAL
SERVICES



THE RICHMOND FELLOWSHIP

provides a network of Therapeutic Communities throughout the United Kingdom offering a supportive environment to emotionally disturbed adults and young people as well as catering for developmentally handicapped children.

For information please write to:

**The Admissions Officer,
The Richmond Fellowship,
8 Addison Road, London W14 8DL,
or telephone: 01-603 6373.**

1959-1983: TWENTY-FOUR YEARS OF CARING

NOTICE TO ADVERTISERS

Applications for advertisement
space in
The British Journal of Psychiatry
should be made to:

PTM PROFESSIONAL PUBLICATIONS LIMITED

282 High Street,
Sutton, Surrey SM1 1PQ
Telephone: 01-642 0162

A new depot neuroleptic to help solve the psychotic puzzle.



Prescribing information is available overleaf.

Piportil

DEPOT PIPOTHIAZINE PALMITATE

From May & Baker the company that developed Largactil.

New Piportil depot is a unique phenothiazine derivative from May & Baker, the company that helped to revolutionise the treatment of psychoses with the introduction of Largactil.

Clinical trials show Piportil depot to exert a potent antipsychotic action against a wide range of symptoms^{1,4} Piportil depot is a fast acting^{5,6} phenothiazine, and causes minimal sedation⁶ and depression^{3,5}

These benefits, together with its four week duration of action^{2,7} facilitate rapid and maintained social integration for your psychotic patients,³ helping you to solve the psychotic puzzle.

Piportil

DEPOT

A new way to treat the
many facets of psychoses.



Prescribing Information: Dosage: (Adults) Initially 25mg (0.5ml) by deep intramuscular injection into the gluteal region to assess susceptibility of patient. Dosage should be increased by increments of 25 or 50mg at appropriate intervals until a satisfactory response is obtained. Most patients respond to a dose of 50-100mg (1-2ml) every 4 weeks. Patients should be stabilised under psychiatric supervision. Contraindications: Marked cerebral arteriosclerosis, phaeochromocytoma, renal or liver failure, severe cardiac insufficiency or hypersensitivity to other phenothiazine derivatives. Precautions: A history of convulsive disorders or marked extra-pyramidal reactions to oral phenothiazines, in pregnancy and lactation. Side-effects: Reversible extra-pyramidal reactions, sleep disturbance, depression, blurred vision, asthenia, impotence, dry mouth, nausea, amenorrhoea, galactorrhoea, hypotension, hyperhidrosis and weight gain have been observed occasionally. Corneal or lenticular cloudiness have not been observed with Piportil alone, but in treatment with phenothiazine preparations in high dosage over a long period, there is a risk of such side-effects occurring. Local reactions at site of injection are rare. Presentations: Boxes of 10 x 1ml (50mg) and 10 x 2ml (100mg) ampoules. Product Licence No. (F10012/017). **References:** 1. Singh A N, Sawani B, Curr Ther Res, 1979; 25:121. 2. Albert J M, Eise R, Cooper S F, Curr Ther Res, 1980; 27:897. 3. Valenueve A, Fontaine P, Curr Ther Res, 1980; 27:411. 4. Lapierre Y, Diel, 2nd World Congress Psychiat Barcelona 1978. Biological Psych Today 1979. Elsevier Holland Biomedical Press, pages 1087-1094. 5. Johnson R E, J Int Med Res, 1979; 7:187. 6. Ibi T M, Reesberg B, Patterson C, Amin A, Wadud A, Herrman W M, Curr Ther Res, 1978; 24:689. 7. Simpson G, Varga V, Curr Ther Res, 1975; 17 No. 3:276-280. Further information is available on request. May & Baker Ltd., Dagenham, Essex RM10 7XS. Piportil depot is a trademark. MA 1971.

