

JOURNAL OF MENTAL SCIENCE.

Asylum Reports have been received for 1912-13 from those marked with an asterisk:—COUNTRY.—Beds, Berks, Bucks,* Cambridge, Carmarthen,* Chester, Chester (Parkside), Cornwall, Cumberland,* Denbigh, Derby,* Devon, Dorset,* Durham, Essex, Glamorgan,* Gloucester, Hants,* Isle of Wight, Hereford, Hertford, Kent (Barming),* (Chartham),* Lancashire (Lancaster), (Rainhill), (Prestwich),* (Whittingham), Leicester, Lincoln (Kesteven), (Bracebridge), London (Colney Hatch), (Hanwell), (Banstead), (Canehill), (Claybury), (Bexley), (Stone, Dartford),* Middlesex, Monmouth,* Norfolk, Northampton, Northumberland,* Nottingham, Oxford, Salop,* Somerset (Wells), (Taunton), Stafford (Stafford),* (Burnatwood),* (Cheddleton),* Suffolk,* Surrey (Brookwood),* (Netherne),* Sussex (East), (Chichester), Warwick, Wilts,* Worcester,* Yorkshire (Wakefield),* (Wadsley), (Menston), (Clifton), (Beverley); BOROUGH.—Birmingham (Winson Green), (Rubery Hill), Bristol, Canterbury, Cardiff,* Derby,* Exeter, Hull, Hayward's Heath,* Ipswich, Leicester, Middlesbrough,* Newcastle, Norwich, Nottingham, Plymouth, Portsmouth, Sunderland, West Ham.* HOSPITALS.—Manchester, Wonford, Barnwood,* Albert, Lincoln, St. Luke's, St. Andrew's, St. Ann's,* Coppice, Warneford,* Coton Hill, Bethlem,* Earlswood,* Bootham,* Retreat,* Colchester,* Broadmoor, Isle of Man; Metropolitan Asylums Board (Caterham),* (Darenth),* (Leavesden),* (Tooting Bec),* (Rochester House); Aberdeen (Kingseat),* Argyll, Ayr,* Dumfries,* Edinburgh,* Midlothian, Fife, Dundee, Montrose, Inverness,* Lanark, Barony, Glasgow, (Royal),* (Woodilee),* Govan,* Gartloch,* Kirklands, Perth,* Murthly, Roxburgh,* Stirling,* Baldovan, Armagh, Ballinasloe, Belfast, Carlow, Castlebar, Clonmel, Cork, Downpatrick,* Ennis, Enniscorthy, Farnham, Kilkenny, Killarney, Letterkenny, Limerick, Londonderry, Maryborough, Monaghan, Mullingar, Omagh, Palmerston, Richmond St. Patrick's, Sligo, Waterford.

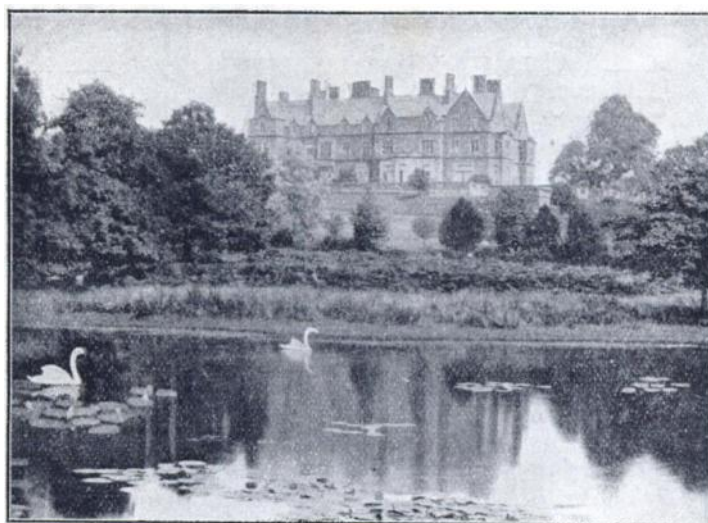
The following Asylum Reports have also come to hand:—Egypt, Cape of Good Hope, Nova Scotia, New Brunswick, Victoria, New York, Massachusetts Hospital, Ontario, Verdun, Warren, Pennsylvania, Philadelphia Friends, Binghamton, Willard, Northampton, Long View, South Australia, Cleveland, Matteawan, New South Wales, Agra and Oudh, Assam, Madras, Bengal, Bombay, Central Provinces, Rangoon, Punjab, North-Western Provinces, Tezpur, Mississippi, Pennsylvania Hospital, Washington, Utica, Long Island, Virginia Central, Illinois West, New Hampshire, Butler, Maryland, Pennsylvania West, South Mountain, Manhattan, Indiana East, Connecticut, Carolina N., Dakota N., Ohio, Carthage, Buffalo, Michigan East, Missouri, Alt Scherbitz, Massachusetts Board, Virginia West, Pennsylvania, Danville, Sheppard and Pratt Hospital, Baltimore, Pennsylvania, Harrisburg, Pennsylvania, Norristown, Aarhus, Lebanon,* Hudson River, Rochester, Taunton, Iowa, Jamaica, Grahamstown, Pretoria, Egypt, Albany, Tarrytown, Straits Settlements, Lower Austria.

Authors of Original Papers receive 25 reprints of their articles free of cost if application be made on the slips when returning proof. If any *extra* reprints are required, notice should be at the same time sent to the Printers, Messrs. ADLARD and SON, Bartholomew Close, London, E.C., who will supply them at a fixed charge. Unless instructions are sent by authors of Papers when the proofs are returned, no copies can be guaranteed.

The copies of the *Journal of Mental Science* are regularly sent by carrier, who in every case obtains a receipt of delivery, to the Ordinary and Honorary Members of the Association. Complaints of non-receipt of the JOURNAL should be sent to Messrs. ADLARD. Any change of address should be intimated to the General Secretary.

BOREATTON PARK.

Founded by the late W. H. O. SANKEY, M.D., F.R.C.P., for the reception of a limited number of ladies and gentlemen mentally afflicted, and now conducted on the same lines by his son, E. H. O. SANKEY, M.A., M.B., B.C.Cantab.



The house, a first-class country Mansion, specially adapted for its purpose, stands about 400 ft. above the sea and commands magnificent views of Welsh mountain scenery.

The Gardens slope to the West and lead to the Deer Park, one of the oldest in the kingdom.

There is fishing both for trout and coarse fish in the pools in the Deer Park and the right of fishing in about 5 miles of the River Perry is leased.

There are Hot Houses and Orchard House.

Private Golf Course of 18 holes, Tennis Courts and Croquet Lawns.

So far as possible the patients of both sexes take their meals and associate at all times with the family of the Superintendent, the object being to make the house as much as possible like an ordinary country house.

Arrangements can be made for friends of the Patients to reside in the house should they desire to do so.

There is good stable accommodation, and Horses, Carriages and Motor are provided.

For further particulars apply—

Dr. SANKEY, Boreatton Park, Baschurch, Salop.

' . . . the best, most instructive and useful Journal going.'

3d. **PUBLISHED** **3d.**
ON WEDNESDAYS.

THE
CLINICAL JOURNAL

— A WEEKLY RECORD OF —
CLINICAL MEDICINE & SURGERY

With their Special Branches.

THE CLINICAL JOURNAL was founded in 1892 with the object of **SPECIALLY REPORTING** and publishing **CLINICAL LECTURES** given by the leading Physicians and Surgeons of the day—Lectures for the most part delivered at the Hospitals to a few score of Students and quite lost to the General Practitioner who, however much he may desire to keep himself in touch with the progress of the times, is usually unable to attend.

Appreciation of this enterprise is shown by the present position of the Journal, its increasing circulation throughout the world, and the numerous letters received from subscribers.

New subscribers are strongly recommended to secure the **BACK VOLUMES**. It may be confidently asserted that no collection of Lectures more reliable and interesting, nor material of greater practical value, is available to the General Practitioner.

Subscribers write:—

"I consider of all the Medical Journals the 'Clinical Journal' is of the greatest use to the busy general practitioner."

"The fact is the Journal contains the very sort of article the country practitioner wants."

". . . the Journal has been useful to me in deciding points, many of which are not in text-books."

Ordinary Subscription Terms, { 52 weeks - 15/6
payable in advance { 26 " - 8/-
13 " - 4/-

3d. * A SPECIAL REDUCTION OF TWENTY PER CENT. **3d.**
is allowed on the above ordinary subscription terms to those subscribers signifying their intention of taking the Journal for not less than two years.

The Medical Publishing Company, Ltd., 23, Bartholomew Close, E.C.

NEW BOOK. Price 2/- net. Illustrated.

**INDUSTRIES FOR THE FEEBLE-MINDED
AND IMBECILE.**

A HANDBOOK FOR TEACHERS.

By A. BICKMORE, Craftsman.

ADLARD & SON, BARTHOLOMEW CLOSE, E.C.

**BARNSLEY HALL,
BROMSGROVE.**

Mental Private Patients
OF BOTH SEXES
are received in connection with
the Worcestershire Asylum.

EXTENSIVE PRIVATE GROUNDS IN THE BEAUTIFUL LICKEY DISTRICT.

Charge: ONE GUINEA WEEKLY.

For further particulars and necessary forms apply to the MEDICAL SUPERINTENDENT.

NOTICE TO ADVERTISERS.

**All Communications concerning Advertisements
in 'The Journal of Mental Science' should be
addressed to**

Messrs. ADLARD & SON,

Bartholomew Close, London, E.C.

Telephone: Holborn 927.

Mental or Physical Fatigue



A PARTIALLY PRE-DIGESTED MILK AND WHEATEN FOOD.

When brain or body is weary the digestive powers are weakened and distaste for ordinary food is often experienced. Under such circumstances the "ALLENBURYS" DIET is especially valuable. It is pleasant to take, easily digested and assimilated, and speedily restorative. Thus it helps the system to recover tone and vigour.

By the use of the "ALLENBURYS" DIET all trouble of peptonising milk and farinaceous foods is overcome. In the sick room it will be found extremely useful as the food is easily digested and assimilated, is quickly made, and only the exact quantity required need be prepared at a time.

The "ALLENBURYS" DIET is made from pure, rich milk and whole wheat, both ingredients being partially pre-digested during manufacture. It can be taken by those who cannot digest cow's milk, and provides a light and very nourishing diet for Invalids, Dyspeptics and the Aged.

For travellers by sea or land this complete food will be found exceedingly valuable.

Made in a minute. Add boiling water only.

A Sample with full particulars sent free on request.

ALLEN & HANBURYS Ltd.,
37 Lombard Street, London, E.C.

SOUTH BEACON,
HADLOW DOWN, BUXTED, SUSSEX.
ESTABLISHED 1892.

Telegrams: "Hadlow Down." Stations: Buxted, Mayfield or Heathfield.

**40 Acres of
Farm and
Recreation
Ground.
Riding,**



**Driving,
Motoring,
Golf
and all
Outdoor
recreations.**

For the Treatment of Nervous or slight Mental Breakdown.

TERMS FROM 3 GUINEAS PER WEEK.

THE CROFT.



A comfortable cottage residence, where one gentleman can have special care and attention without necessarily coming into contact with other patients.

If desirable he can enjoy all the recreations provided at South Beacon—Motoring, Riding, Golf.

UNDER MEDICAL SUPERVISION.
MALE NURSES' (TEMPERANCE) CO-OPERATION.
 LIMITED.

Only Addresses— { London: 10, THAYER STREET, MANCHESTER SQUARE, W.
 Manchester: 235, BRUNSWICK ST. (Facing Owens College).
 Edinburgh: 7, TORPHICHEN STREET.
 Birmingham: 75, HAGLEY ROAD.

Superior Trained MALE NURSES for Medical, Surgical, Mental, Dipsomania, Fever, and Travelling Cases supplied at a moment's notice, Day or Night. All Nurses supplied by this Association are TOTAL ABSTAINERS. SKILLED MASSEURS supplied. Terms: £1 16s. 6d. to £3 3s. per week. Nurses to receive their own fees.

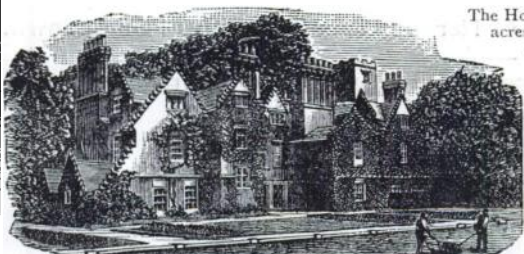
ALL NURSES FULLY INSURED AGAINST ACCIDENT.

Telephones { (London), 633, Paddington.
 (Manchester), 4899, Central.
 (Edinburgh), 3715, Central.
 (Birmingham), 2106, Midland.

Telegrams { "Assuaged, London."
 "Assuaged, Manchester."
 "Assuaged, Edinburgh."
 "Assuaged, Birmingham."

W. WALSH, Secretary.

The Moat House, Tamworth, Staffs.
 Stations: L. & N.W. and Mid. Railways.



The House stands in grounds of ten acres (within five minutes' drive of either Station), and is devoted to the Care and Treatment of a few Ladies suffering from Nervous and Mental Disorders, who enjoy the comforts, privacy, and occupations of home-life. Voluntary Patients are received without Certificates.

A Home for Nervous and Mental Cases.

For terms, etc., apply to the Resident Licensees:
 EDWARD HOLLINS, M.A.Camb., J.P., or (Mrs.) S. A. MICHAUX.

TRAINED NURSES' DEPARTMENT AT THE RETREAT, YORK.

Staffed by Nurses who have been trained for four years in the Retreat and conducted upon a profit-sharing basis. Mental and Nervous cases only undertaken. Terms 2 guineas weekly. Male Nurses £2 10 0.

Apply, MATRON, Retreat, York.

Nat. Tel. 112.

ALWAYS USE
REFLEX

FLOOR POLISH.

REQUIRES NO MIXING WHATEVER.

Brilliantly Polishes Floors, Linoleums, Floorcloths, &c.

Economical, Cleanly, Healthful; Maximum of Lustre for Minimum of Labour.

GEO. T. COX & SONS, Ltd.,

9 & 10, ST. MARY-AT-HILL, EASTCHEAP, LONDON, E.C.

This Polish is specially adapted for use in Public Institutions and other large establishments. Samples Free on application.

JOURNAL OF MENTAL SCIENCE.

CONTENTS FOR JULY 1914.

Pages

Original Articles.—

The Biological Conception of Insanity; by John Turner, M.B.—Healing and Training (Heil und Bildung); by Dr. Alexander Nener.—Some Observations on Early Nervous and Mental Cases, with Suggestions as to Possible Improvement in our Methods of dealing with them; by Dr. A. Helen Boyle.—Epilepsy; A Theory of Causation founded upon the Clinical Manifestations and the Therapeutic and Pathological Data; by J. J. M. Shaw, M.A., M.D.—Some Cases of Psychological Interest from Private Practice; by J. E. Middlemiss, M.R.C.S.Eng., L.R.C.P.Lond.—The *Rôle* of Hypnotics in Mental Diseases, with Indications for their Selection and Employment; by Richard Eager, M.D.Aber.—The Relationship between Epilepsy and Tuberculosis; by B. Henry Shaw, M.B. . . . 351—493

Clinical Notes and Cases.—

A Case of Hereditary Deaf-mutism with Pedigree; by O. P. Napier Pearn, M.R.C.S.(Eng.), L.R.C.P.(Lond.).—Pigment occurring in the Dentate Nuclei of the Cerebellum in a Chronic Case of Graves' Disease associated with Scleroderma and Insanity; by J. R. Perdrau, M.B., B.S.(Lond.).—A Case of Loss of Memory; by Wm. Leggett, B.A., M.D. . . . 493—499

Recent Medico-Legal Cases.—

Park *v.* Park.—Felstead *v.* The Director of Public Prosecutions.—Rex *v.* Coelho 500—516

Epitome.—

Progress of Psychiatry during 1913: America, by Dr. WILLIAM McDONALD; Italy, by Prof. G. C. FERRARI and Dr. G. ZUCCARI . . . 516—523

Epitome of Current Literature.—

1. Physiological Psychology.—2. Asylum Reports 523—531

Notes and News.—

The Medico-Psychological Association of Great Britain and Ireland.—South-Western Division.—Northern and Midland Division.—Scottish Division.—Irish Division.—The Royal Society of Medicine.—Notice of Meetings.—Appointments 531—540

ADLARD AND SON, IMPR., LONDON AND DORKING.