

VOL. 108. No. 455.

JULY, 1962

THE JOURNAL OF MENTAL SCIENCE

(THE BRITISH JOURNAL OF PSYCHIATRY)



BY AUTHORITY OF
THE ROYAL MEDICO-PSYCHOLOGICAL ASSOCIATION

London

H. K. LEWIS & CO. LTD

PUBLISHED SIX TIMES A YEAR

SINGLE COPIES £1 NET

ANNUAL SUBSCRIPTION £6 POST FREE

JOURNAL OF MENTAL SCIENCE

(THE BRITISH JOURNAL OF PSYCHIATRY)

EDITOR-IN-CHIEF

Eliot Slater

CO-EDITOR

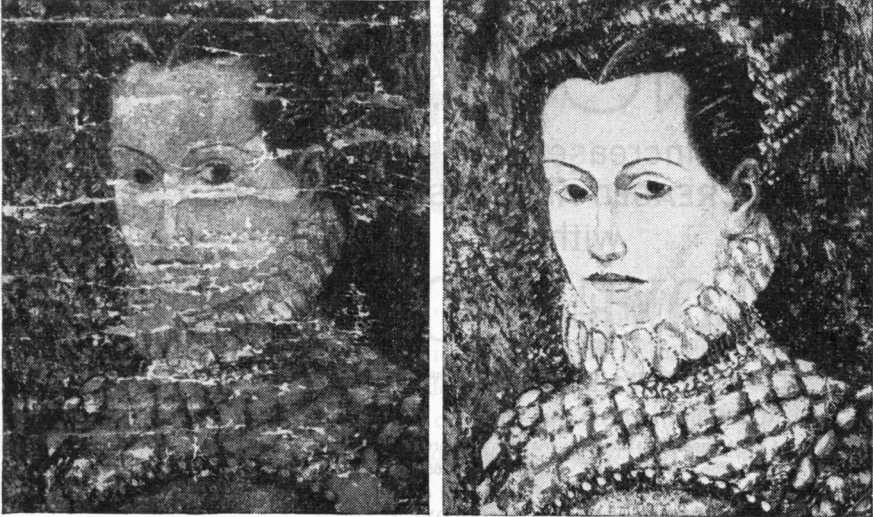
Alexander Walk

BOARD OF ASSESSORS

E. W. Anderson	E. H. Hare	John Pollitt
A. A. Baker	G. R. Hargreaves	D. A. Pond
R. F. Barbour	*Denis Hill	Felix Post
John Bowlby	J. Hoenig	K. Rawnsley
G. M. Carstairs	W. W. Kay	*W. Linford Rees
*L. C. Cook	L. G. Kiloh	*B. W. Richards
A. J. Coppen	B. H. Kirman	Derek Richter
Valerie Cowie	Denis Leigh	J. A. Fraser Roberts
L. Crome	*T. F. Main	J. T. Robinson
*Desmond Curran	Paul Mallinson	T. Ferguson Rodger
Peter Daniel	V. Meyer	*Martin Roth
D. Russell Davis	*W. M. Millar	Peter Sainsbury
H. V. Dicks	Louis Minski	William Sargent
M. A. Falconer	*A. B. Monro	P. D. Scott
*Richard Fox	W. L. Neustatter	Patrick Slater
Graham A. Foulds	Ian Oswald	E. Stengel
R. K. Freudenberg	G. Pampiglione	R. Ström-Olsen
J. M. Frisch	C. M. B. Pare	J. M. Tanner
Gerald Garmany	*M. Partridge	F. Kräupl Taylor
T. C. N. Gibbens	A. Spencer Paterson	R. F. Tredgold
J. G. Gibson	Malcolm Piercy	*W. Warren
A. M. Halliday	F. E. Pilkington	J. K. Wing
Max Hamilton	John Pippard	

*Also members of Journal Committee

in depression restore the premorbid personality



Promptly but smoothly, 'Parnate' restores the depressive patient's normal personality. The action of 'Parnate' is clear cut and specific—it relieves the symptoms of depression. The onset of recovery is prompt because 'Parnate' acts within the first few days of treatment. The course of recovery is smooth because 'Parnate' causes no overstimulation or euphoria.

'Parnate' is indicated in reactive and other psychoneurotic depressions, endogenous depressions (including the depressive phase of manic-depressive psychosis and other depressive states associated with psychoses), and involuntal melancholia.

Parnate

a true antidepressant effect,
more quickly achieved

Each 'Parnate' tablet contains 10 mg. tranylcypromine as the sulphate.
Issued in containers of 50 and 500.

SK & F Smith Kline & French Laboratories Ltd
Welwyn Garden City, Herts

'Parnate' (brand of tranylcypromine) is a trade mark

PT:PA92

NOW...
for increased pain—
INCREASED ANALGESIA
with

'DOLOXENE COMPOUND-65'

Trade Mark

Brand

DEXTROPROPOXYPHENE & ACETYLSALICYLIC ACID COMPOUND

Analgesia is increased when you prescribe 'DOLOXENE COMPOUND-65' because it contains twice the amount of 'DOLOXENE' as does regular 'DOLOXENE COMPOUND'. It combines 65 mg. 'DOLOXENE' with phenacetin, acetylsalicylic acid and caffeine to give pronounced analgesia, particularly in inflammation and pain associated with recurrent or chronic illness. Side effects are minimal.

'DOLOXENE', chemically unique among analgesics, elevates the pain threshold by depressing the sensory area of the brain. In extensive trials by over a hundred investigators in more than 6,300 patients, 89.8% experienced relief of pain after receiving 'Doloxene' alone or in combination.

INDICATIONS:

Acute, chronic or recurrent pain of:
Rheumatism · Arthritis · Dysmenorrhoea
Malignancy · Trauma · Neuritis · Migraine
also in dental pain, post-operative pain
and muscular pain.



PRESENTATION:

'Pulvules' 'DOLOXENE COMPOUND-65'
(65 mg. 'Doloxene')

also,

'Pulvules'

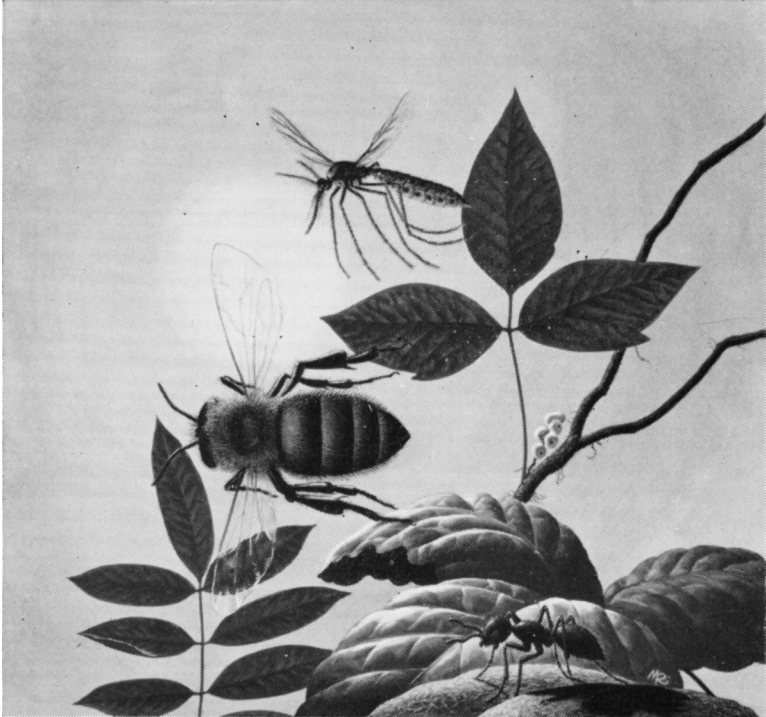
'Doloxene Compound' (32 mg. 'Doloxene')

'Pulvules' 'DOLOXENE' 65 mg.

'Pulvules' 'Doloxene' 32 mg.

ELI LILLY AND COMPANY LIMITED BASINGSTOKE ENGLAND

What do these have in common? SUMMERTIME SKIN DISTRESS...



... and ADCORTYL-A

Summer, with its emphasis on outdoor activities, brings a notable increase in skin distress. Common offenders include poisonous plants, insect bites, and sunburn. Adcortyl-A Lotion with Graneodin and Adcortyl-A Spray bring

rapid anti-allergic, antipruritic, and anti-inflammatory responses to warm-weather dermatitis. Adcortyl-A Lotion with Graneodin, in addition, affords proved antibacterial action.

ADCORTYL-A LOTION WITH GRANEODIN

Squibb Triamcinolone Acetonide with Neomycin and Gramicidin (Graneodin)

ADCORTYL-A SPRAY

Squibb Triamcinolone Acetonide Aerosol

SQUIBB



A Century of Experience Builds Faith

'Adcortyl' and 'Graneodin' are trade marks. Adcortyl-Δ is available overseas as Kenacort-A.

STELAZINE



'Fifty chronic schizophrenics of the most deteriorated kind . . . who had previously been treated for many years with other methods, were treated with Stelazine; 18 were much improved and 17 were moderately improved.'

Med. Proc. (1960) **6**, 109

'The conclusion is drawn that "Stelazine" is a drug of value in the treatment of such patients and therefore likely to be even more useful in patients previously untreated by phenothiazine drugs.'

Med. J. Aust. (1961) **1**, 776

'There was often a remarkable degree of return of insight . . . The nursing staff and relatives were unanimous in describing the better rapport they were able to obtain with patients.'

Brit. med. J. (1959) **i**, 549

'At the end of 6 months there was a generalized improvement in all the patients treated; 8 patients were fit to leave hospital in the care of their relatives.'

Med. Proc. (1960) **6**, 169

' . . . ["Stelazine"] proved extremely useful in regressed and withdrawn catatonics refractory to other therapies; 58 per cent of the [eighty] patients treated with . . . ["Stelazine"] improved, with 26 per cent being discharged or ready for discharge.'

Illinois Med. J. (1961) **119**, 331

'There was no somnolence. The routine blood and urine tests did not reveal any signs of toxicity. In concluding the authors say trifluoperazine has shown itself to be of value in the treatment of chronic schizophrenia. (*Summary of translation.*)

Canad. psychiat. Ass. J. (1959) **4**, 239

STELAZINE

—often effective in patients unresponsive to other neuroleptic agents, insulin coma, and ECT

'Stelazine' is available as: Tablets of 5 mg., Ampoules of 1 mg., Concentrate (containing 10 mg./ml.). Also tablets of 1 mg. and sustained-release 'Spansule' capsules of 2 mg.

in chronic schizophrenia

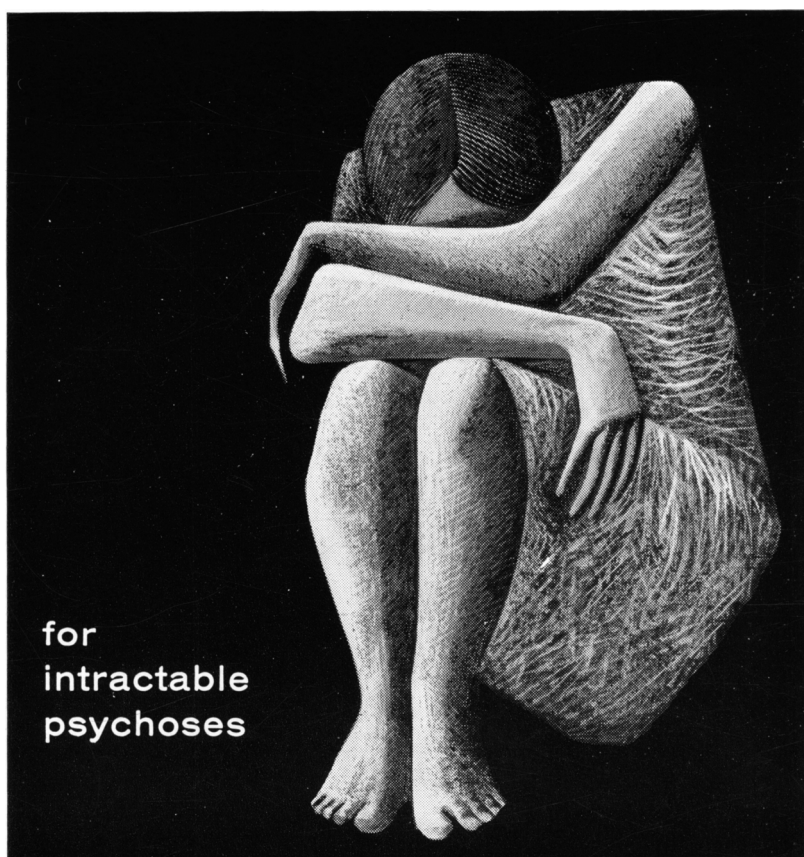


The 'hard core' of patients refractory to every known therapy is a major problem in the mental hospital. These patients need the most diligent nursing, and their presence for many years is harmful to the morale of their fellow-patients and the hospital staff. 'Stelazine' has brought the hope of recovery for many such people. Investigators lay stress on the drug's ability to motivate withdrawn and apathetic patients, as well as its better-known tranquillizing effect in hostile and aggressive cases.



SMITH KLINE & FRENCH LABORATORIES LTD
Welwyn Garden City, Herts

'Stelazine' (brand of trifluoperazine) and 'Spansule' are trade marks Brit. Pat. Nos. 742007, 813861, 857547
SZ:PA82 (col)



for
intractable
psychoses

'Majeptil'

trade mark

brand

THIOPROPERAZINE METHANESULPHONATE

for the management of acute and chronic
schizophrenia of all degrees and types, and for acute mania
and other states of excitation

Tablets of 1 mg., 5 mg., 10 mg. and 25 mg.

Ampoules of 1 ml. (7.5 mg.) of solution for injection



An **M&B** brand
Medical Product

Manufactured by

MAY & BAKER LTD

MA8829

DISTRIBUTORS PHARMACEUTICAL SPECIALITIES (MAY & BAKER) LTD · DAGENHAM



depressive
illness

Niamid[†]

brand of nialamide

specific treatment

Initially
two 25 mg. tablets
three times a day,
to be reduced
according to the
requirements of the
individual patient.
Average
maintenance dose
75 mg. daily.

marketed in the United Kingdom by

HARVEY PHARMACEUTICALS

a department of Pfizer Ltd · Sandwich · Kent

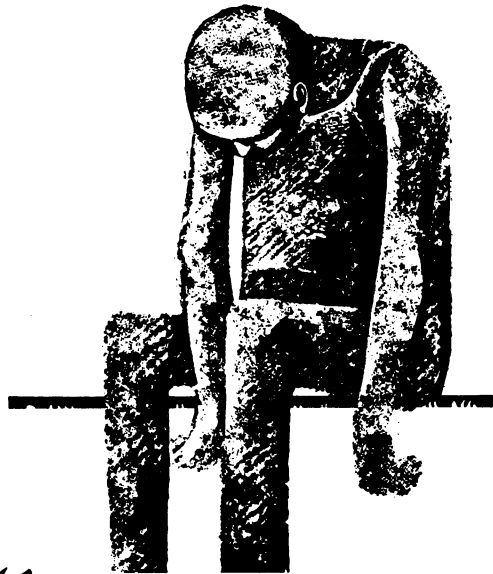


in epilepsy

prevent the problem that can arise from
interrupted anti-convulsant therapy

Phenobarbitone Spansule

sustained-release capsules



for the
unresponsive
psychotic

'Stemetil'
trade mark brand

PROCHLORPERAZINE

effective in acute and chronic schizophrenia, manic depressive psychoses, alcoholism and narcotic addictions.

Unlike the still more potent neuroleptics, 'Stemetil' exerts its rapid psychopharmacological effect within a fairly wide dosage range (75 to 150 mg. daily). Hence, when necessary, it is relatively easy to modify dosage and control side-effects without impairing therapeutic efficacy.

'Stemetil' is a safe drug. Following its use in hundreds of thousands of patients during the last four years there are only five reported cases of jaundice and one of agranulocytosis.

PRESENTATIONS

Tablets of 25 mg., Forte Syrup [25 mg. per fluid drachm (3.6 ml.)], injection solution (12.5 mg. per ml.), suppositories of 25 mg.



An M&B brand Medical Product

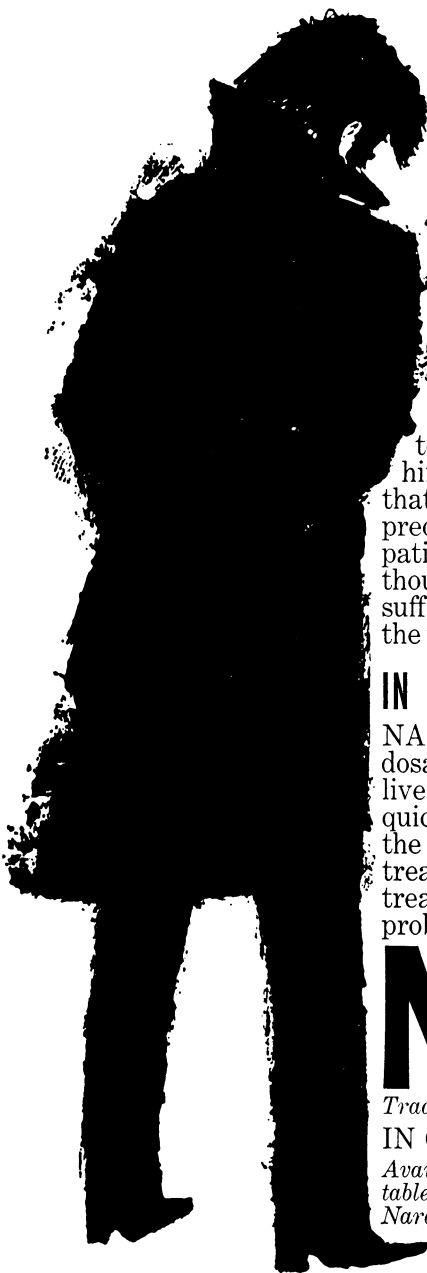
MANUFACTURED BY

MAY & BAKER LTD

DISTRIBUTORS : PHARMACEUTICAL SPECIALITIES (MAY & BAKER) LTD · DAGENHAM

MA9405





THE OUTCAST

'The fairest things in life
are Death and Birth
And of these two
the fairer thing is death.'

Ode to the Setting Sun Francis Thompson
Was Francis Thompson a depressive?
One strongly suspects so. Certainly
he was a mystic and predisposed
to bouts of severe melancholy. He saw
himself as an outcast, alone—he felt
that life was not worth living; he was
preoccupied with death. Many of **your**
patients may show just such a morbid
thought-pattern. For these modern-day
sufferers effective therapy is possible:
the treatment is NARDIL.

IN MILD TO MODERATE DEPRESSION

NARDIL is safe and is effective at low dosage levels. Toxic effects on blood or liver are extremely rare. NARDIL acts quickly. Response is usually seen within the first weeks or even days of treatment. NARDIL provides reliable treatment for depressives—often the problem patients of a busy practice.

NARDIL

Trade Mark

Brand of phenelzine

IN GENERAL PRACTICE

Available in bottles of 100 and 500 sugar-coated tablets each containing 15 mg. phenelzine.

Nardil is known in some countries as 'Nardelzine'
(trade mark)

WILLIAM R. WARNER & CO. LTD., EASTLEIGH,
HAMPSHIRE. Tel: EASTLEIGH 3131



Ph. 178

'Mysoline' can open the window to a new world

"... 'Mysoline' in general showed itself to be more active than phenytoin and phenobarbitone in controlling epileptic syndromes in children and returning them to normal."

Lattante (1958), 29, 522

- * *Wide range of activity* . . . strikingly successful in most forms of epilepsy.
- * *Beneficial effect* on condition and outlook . . . brings new-found confidence and increased sociability.
- * *Well tolerated* . . . no sedative or other side effects to interfere with normal schooling and recreation.

Available in tablets of 0.25 G. and as a palatable oral suspension. Basic N.H.S. cost: 3/6d. for 30 tablets dispensed from packs of 1,000, and 4/6d. for 100 ml. of suspension.

Mysoline—helps epileptics to lead normal happy lives

Primidone B.P.

TRADE MARK

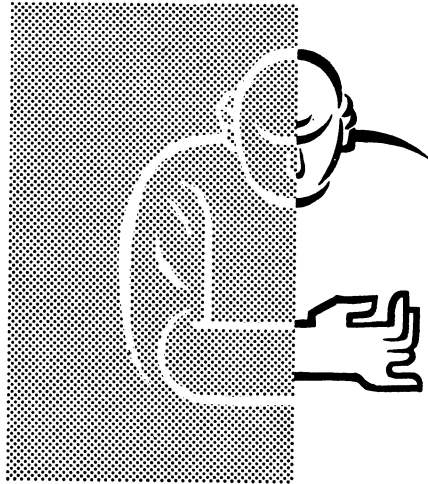
IMPERIAL CHEMICAL INDUSTRIES LIMITED

PHARMACEUTICALS DIVISION
WILMSLOW CHESHIRE



DISIPAL (Regd.)

ORPHENADRINE HYDROCHLORIDE



1. Correction of Drug Induced Extra Pyramidal Symptoms
2. Parkinsonism
3. Senile and Presenile Depressions
4. Vertiginous and Post-Traumatic Dizziness

MANUFACTURED AND DISTRIBUTED IN THE U.K. BY

CAMDEN CHEMICAL CO. LTD
LONDON · WC1

For N.V. KONINKLIJKE PHARMACEUTISCHE FABRIEKEN V H BROCADES · STHEEMAN AND PHARMACIA · AMSTERDAM · HOLLAND
U.K. Patent Nos. 607258 and 743495

A British monoamine oxidase inhibitor

DRAZINE

FOR DEPRESSION

- only two 10 mg. doses a day
- stable response ● low toxicity
- rapid effect ● negligible side-effects

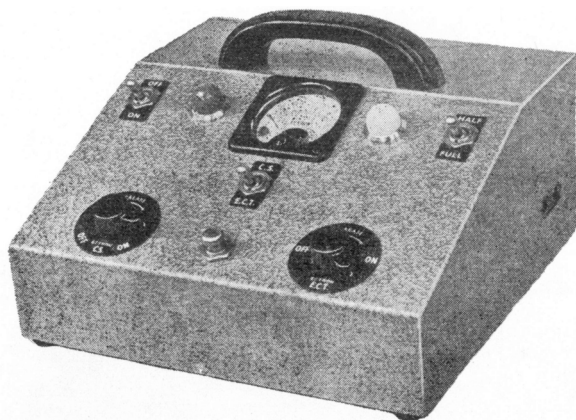
Each tablet of Drazine (phenoxypropazine) contains 5 mg. (1-Methyl-2-phenoxyethyl) hydrazine hydrogen maleate



Smith & Nephew Pharmaceuticals Limited WELWYN GARDEN CITY · HERTFORDSHIRE

'ECTONUSTIM'**E.C.T. APPARATUS and
CEREBRAL STIMULATOR**

(A.C. or D.C. Mains)



For a new improved E.C.T. technique which eliminates the need for muscle relaxants and anaesthetics.

Also:

'ECTONUS'

—E.C.T. apparatus

'ECTRON'

—E.C.T. apparatus

'ECTRON'

—Rubber Mouth Gag

'ECTRONOLYTE'

—Electrolyte Powder

Write for full details to: **ECTRON LTD**

39 NORTON ROAD, LETCHWORTH, HERTS, ENGLAND

Telephone: LETCHWORTH 2124



La Métairie

NYON (Switzerland)

Lake of Geneva

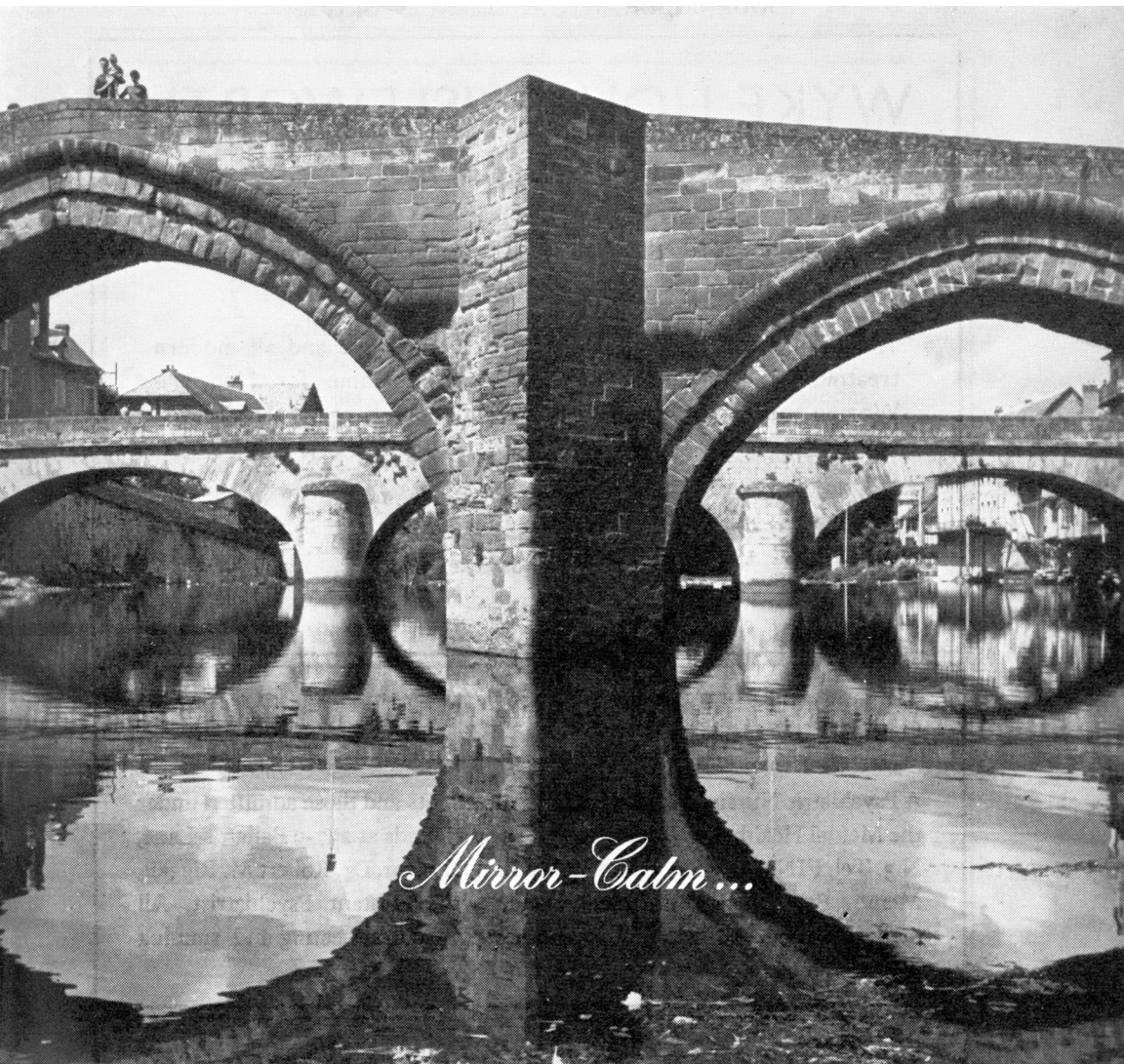
Private Nursing Home, Founded in 1857. Several villas in a large park

All types of modern Treatment for Mental & Nervous Diseases

Rest Cures - Psychotherapy
Biological Treatments - Chemotherapy

For further information: Apply to Dr. W. SEMADENI, Chief Doctor
Telephone 9.65.91

the tranquilliser pure and simple . . .



Mirror-Calm...

Espalion, Aveyron, France

“Thioridazine is so well tolerated that it appears an excellent phenothiazine for ambulatory patients, in particular for maintenance of patients after they leave hospital.”

J. ment. Sci. (1960) 106, 1417.

“Melleril has fewer side-effects than any other of the phenothiazine compounds . . .”

J. ment. Sci. (1960) 106, 732.

Melleril

BY SANDOZ

Tablets: Thioridazine hydrochloride
10 mg. 25 mg. 50 mg. 100 mg.

Syrup: 25 mg. thioridazine base in 4 ml.

. . . in senile agitation

WYKE HOUSE, ISLEWORTH

Tel. ISLeworth 7000

A Private Home for the individual treatment and care of Nervous and Mental Illness and Alcoholism.

The number of patients is limited to twenty-five and all modern treatments are available. This well-known Home for Men and Women and the Aged stands in its own grounds of 15 acres, seven miles from Marble Arch.

Further particulars from the Resident Physician

H. Pullar-Strecker,

M.D.

NORTHUMBERLAND HOUSE

A Psychiatric Nursing Home for informal patients and those admitted under the Mental Health Act. Situated in pleasant grounds at 237-9 Ballards Lane, N.3. Tel. FINchley 5283. Resident Medical Director, Dr. Robert M. Riggall, Memb. Brit. Psycho-Analytical Socy., with Assistant Psychiatrist. All modern treatments including psychotherapy. Central heating and running water in all rooms.

HITCHAM PLACE, BURNHAM, BUCKS.

(late Fenstanton, Christchurch Road, S.W.2)

A Private Home for the Care and Treatment of a limited number of Ladies with Mental and Nervous Disorders. Large Country Mansion with twenty acres of grounds in Green Belt. Home-like surroundings.

Apply: Dr. Madeline R. Lockwood, Resident Physician. *Telephone: Burnham 624*

CHISWICK HOUSE, MOSS LANE, PINNER, MIDDLESEX

Telephone Pinner 0234

Private Nursing Home for Nervous and Psychological Troubles, including Alcoholism and a certain number of long-term elderly cases.

All modern treatments. Forty patients of both sexes. Country house in six acres of grounds. Twelve miles north-west of London. Easily accessible from Baker Street to Pinner—22 minutes. Ten minutes walk from Pinner Station. Resident and visiting physicians.

Medical Director, Douglas Macaulay, M.D., D.P.M.

BARNWOOD HOUSE

GLOUCESTER

A PRIVATE HOSPITAL (outside the National Health Service), for the CARE and TREATMENT of NERVOUS and MENTAL DISORDERS. Within two miles of the Western and London Midland Regional Railway Stations at Gloucester, the Hospital is easily accessible by rail from London and all parts of the United Kingdom. It is beautifully situated at the foot of the Cotswold Hills, and stands in its own grounds of over 300 acres. Patients of both sexes are received for treatment. Special accommodation is also provided at THE MANOR HOUSE, which stands in its own grounds and is entirely separate from the main Hospital. All the most modern methods of treatment, including electric shock and prefrontal leucotomy, are used.

HUME TOWERS

27 BRANKSOME WOOD ROAD, BOURNEMOUTH

TELEPHONE: WESTBOURNE 64384

has been opened as an ordinary nursing home for all kinds of borderline mental and nervous breakdown, with special accommodation for geriatric cases in a separate villa. Applications for admissions should be made to the Resident Medical Officer, Hume Towers.

For Terms etc., apply to

Physician Superintendent

TELEPHONE: No. 66207 GLOUCESTER

CLINICAL ELECTRO- ENCEPHALOGRAPHY

L. G. Kiloh and J. W. Osselton

Price 50s.

Dr. Kiloh and Mr. Osselton have produced a book mainly for the clinician. It is brief, modest, but lucid, cogent and surprisingly comprehensive as a survey of existing knowledge. It will undoubtedly encourage more clinicians to seek to acquire expertise in this field, and its qualities are such as to commend it to some neurophysiologists and to encourage them to become more familiar with and to enquire into the problems of the neuropsychiatric clinic and the EEG laboratory.

BRAIN FUNCTION IN METABOLIC DISORDERS

Neurological Effects of
Alterations in Hydrogen
Ion Concentration

B. D. Wyke Price 35s.

This book is an unusually lucid account of the neurophysiological effects of acid-base imbalance. It is a work which is complementary to *Modern Trends in Anaesthesia-2* for, in the latter, neurophysiological effects are not discussed. It is a work which is bound to prove of great interest and value to all anaesthetists, physiologists and neurologists. Indeed, it cannot be too highly recommended.

BUTTERWORTHS

4&5 Bell Yard, London, W.C.2.

INDEX TO ADVERTISERS

Butterworth & Co. Ltd.	xviii
Camden Chemical Co. Ltd.	xii
Ectron Ltd.	xiv
Harvey Pharmaceuticals	vii
I.C.I. Ltd. Pharmaceutical Division	xi
Eli Lilly & Co. Ltd.	ii
Pharmaceutical Specialities (May & Baker) Ltd.	vi and ix
Sandoz Products Ltd.	xv
G. D. Searle & Co. Ltd.	xxii
Smith Kline & French Laboratories	i, iv, v, viii, xx
Smith & Nephew Pharmaceuticals Ltd.	xiii
E. R. Squibb & Sons Ltd.	iii
Vitamins Ltd.	xxiv
William R. Warner & Co. Ltd.	x
<u>Nursing Homes:</u>	
Barnwood House, Gloucester	xvii
Chiswick House, Pinner	xvi
Hitcham Place Burnham	xvi
Hume Towers, Bournemouth	xvii
La Métairie	xiv
Northumberland House	xvi
Wyke House, Isleworth	xvi

Enquiries regarding advertising in the

JOURNAL OF MENTAL SCIENCE

should be addressed to:—

Advertisement Manager

ALDRIDGE PRESS LTD

27 Chancery Lane London WC2

Telephone: HOLborn 8655/6

Telegrams: Presreps, Holb. London

can't cope
all day—



can't sleep
at night

'Amylozine Spansule' sustained-release capsules are indicated in chronic psychoneuroses and acutely apprehensive states, marked by agitation, insomnia, fatigue, phobias, vacillation, moodiness and fear. Each 'Amylozine Spansule' capsule contains trifluoperazine 2 mg. and amylobarbitone 64.8 mg. (gr. 1).

AMYLOZINE

provides tranquillity with controlled sedation

SK Smith Kline & French Laboratories Ltd
&F Welwyn Garden City, Herts

'Amylozine' and 'Spansule' are trade marks
Brit. Pat. Nos. 742007, 813861, 857547

SAM:PA112