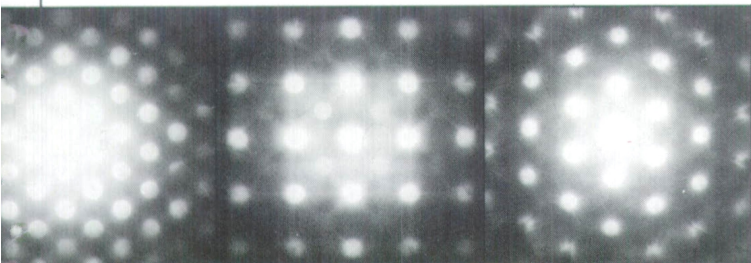


THE BEST WAY TO GET AN ANGLE ON CRYSTALS.



High resolution, electron microdiffraction analysis may require several tilt angles.

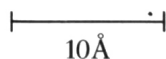
Please visit Booth No. 205 at the MRS Show in Anaheim, CA, April 30-May 2, 1991.

If you need to determine elemental composition and molecular or atomic structure of crystals in minerals, metals, ceramics or polymers, our JEM-2010 is the best high resolution, analytical microscope for the job.

The JEM-2010 is a 200 kV TEM with superior optics and high probe current. It is optimized for analytical performance

not only in the analytical configuration, but also in the ultra-high resolution configuration as well.

With the EDS accessory, elemental analyses may be performed using probes as small as 10Å.



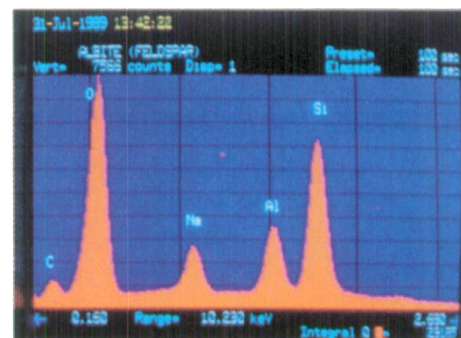
Equipped with the interchangeable, high resolution pole piece, the JEM-2010 is also an ultra-high resolution microscope with 1.9Å resolution over 10° of tilt and an x-ray collection angle of 0.07 steradians.

30°

Equipped with EDS, the JEM-2010 is capable of high sensitivity elemental analyses using probes as small as 10Å in diameter.

With its analytical pole piece, it offers 2.3Å resolution over 30° of tilt and an x-ray collection angle of 0.13 steradians. That is the best combination of analytical features of any instrument in the 200 kV class.

But the JEM-2010 is more than an analytical microscope.



High sensitivity elemental analysis is possible with the addition of an EDS system.

For purposes of analyzing obliquely oriented crystalline material in metal, mineral, ceramic or polymer matrices, the JEM-2010 offers 2.3Å resolution with a tilt angle of ± 30 degrees.



JEM-2010 Transmission Electron Microscope



Circle No. 2 on Reader Service Card.

Let us tell you more. Call (508) 535-5900. Or write JEOL USA, Inc., 11 Dearborn Road, Peabody, MA 01960.

IN R&D, THE FUTURE BELONGS TO THE FLEXIBLE

For as much as superconductivity is changing the future, there will also be changes in the projects you're working on.

That means the equipment you buy today should be designed to help you — not limit you — in the future.

If you decide on UHV's Model 6000 modular approach to deposition and sample processing, you can stay flexible enough to handle changes as they occur in super-conducting, semiconducting, optical, diamond or any other rapidly developing area of materials research and development.

A UHV system begins with the basics, a standardized ultra-clean, ultra-low pressure 5×10^{-11} Torr vacuum chamber (five sizes), pumps, vacuum gauges, gas controls, electrical distribution system, and a versatile sample manipulation stage.

To this, you can add (now or later) any one of dozens of options, including RF-DC sputtering, evaporation, MBE, ECR, ion sputtering or others, to create a unique R&D tool.

Write or call for UHV's complete 1991 catalog and price list. Let UHV help you stay flexible for the future, at an affordable price.



Ultra High Vacuum Instruments Inc.
Office Box 12, 1951 Hamburg Turnpike
Buffalo, N.Y. 14218 (716) 833-7534

BUILDING EQUIPMENT FOR THE WORLD'S LEADING SCIENTISTS AND ENGINEERS