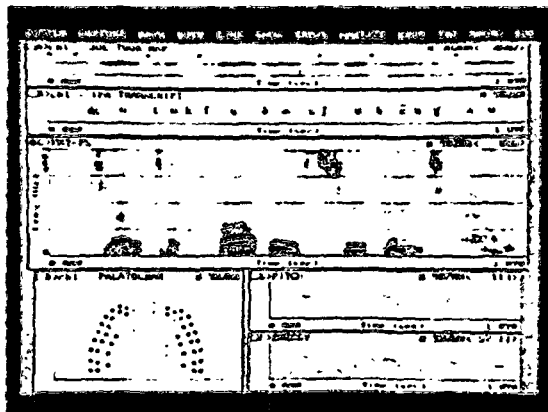
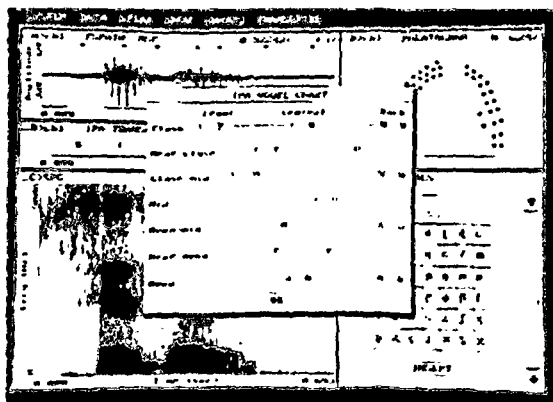


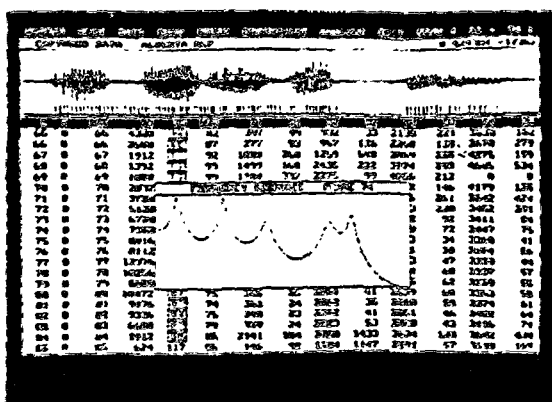
CSL offers the right tools for acoustic phoneticians.



The CSL contains extensive speech analysis capabilities. Files acquired with Kay's Palatometer allow physiological data to be compared to acoustic results.



The IPA Transcription Tutorial is presented in a multimedia environment. When students are unsure of proper transcription, a vowel or consonant chart can be displayed which speaks each phoneme and provides a spectrographic display with a click of the mouse.



The LPC numerical editor allows users to mark columns of data (e.g., specific formants or F_0 values) for quick, precise editing. A variety of functions is available.

CSL™/Computerized Speech Lab offers extensive analysis formats, editing functions, and other core capabilities that make it the instrument of choice for acoustic phoneticians. The CSL is a completely integrated system. It includes both hardware and software and works on a host PC personal computer. Some exciting features and options include:

Features

- Dual-channel data acquisition with CD-quality audio playback fidelity (four-channel option available)
- Extensive analysis formats including spectrograms, waveforms, LPC (slices and formant history), pitch, energy, and more
- On-screen IPA transcription tool with all 196 characters including diacritics
- Integration with Palatometer linguopalatal contact patterns to link phoneme production and acoustic results
- Extensive commands for editing, digital filtering, warping, splicing, mixing, and appending speech samples for precise manipulation

Programs for Research and Teaching

- Speech synthesis (LPC-derived, residual-driven, and pitch-synchronous) with both graphic and numerical editing of formant frequencies, bandwidths, and fundamental frequency
- Multimedia IPA teaching software with each spoken phoneme analyzed spectrographically and with built-in exercises for student practice
- Phonetic database offers 82 MB of speech sampled from 25 languages with over 1,870 samples on CD-ROM
- Real-time options including pitch, spectrograms, and LPC-based spectra; ideal for classroom demonstrations or lab exercises

Kay offers competitive package pricing and excellent support for the CSL. Call 1-800-289-5297 for more information.

KAY

Kay Elemetrics Corp.
2 Bridgewater Lane
Lincoln Park, NJ 07035-1488 USA
Tel: 1-800-289-5297 (In USA and Canada),
(973) 628-6200 • FAX: (973) 628-6363
E-mail: askus@kayelemetrics.com
Web: www.kayelemetrics.com

CSL™ is a trademark of Kay Elemetrics Corp.

CAMBRIDGE

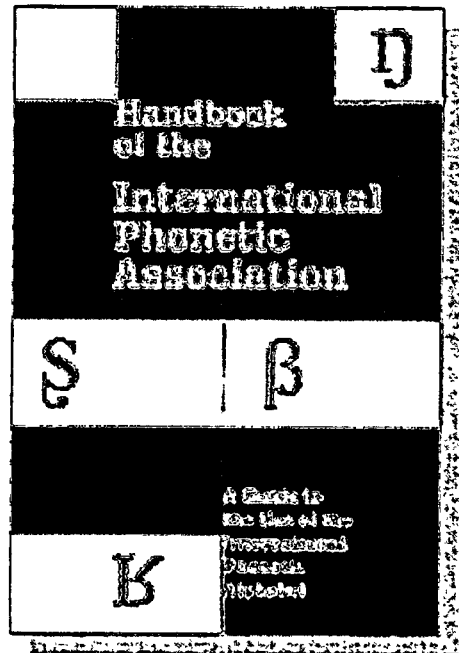
Handbook of the International Phonetic Association

A Guide to the Use of the International Phonetic Alphabet

This book is a comprehensive guide to the International Phonetic Alphabet, widely used for over a century to transcribe the sounds of languages. The *Handbook* is in three parts: Part I contains an introduction to phonetic description and exemplification of the use of phonetic symbols; Part II consists of 29 'Illustrations' of the application of the International Phonetic Alphabet to a range of languages; and Part III covers speech pathology, computer codings, and the history of the IPA. This is an essential reference work for phoneticians and linguists more generally.

£30.00 HB 0 521 65236 7 214pp

£10.95 PB 0 521 63751 1



This book is available to members of the International Phonetic Association at a discount of 50% off the hardback and 35% off the paperback. Please use the coupon below to place your order. Price includes p+p.

I wish to order my copy of the *Handbook of the International Phonetic Association*.

Please send me my copy of the Hardback £15.00* / Paperback £7.10* (price includes p+p).

I enclose a cheque* / Eurocheque (in sterling and made payable to Cambridge University Press)* / International Money Order* / Bank Draft* / Credit Card (Mastercard* Barclaycard* Visa* American Express*) * delete as applicable

Card No: _____ Expiry Date: _____

Name of cardholder _____ Signature _____

Address as registered by card company _____

_____ Postcode _____

Your name _____

Address _____

_____ Postcode _____

Please return this coupon to Emma Baxter, Cambridge University Press, The Edinburgh Building, Shaftesbury Road, Cambridge, CB2 2RU

Please allow 21 days for delivery within the UK.



The Edinburgh Building
Cambridge, CB2 2RU, UK
www.cup.cam.ac.uk

(This page may be photocopied)

International Phonetic Association

Subscription Form

The subscription to the Association is UK£13 (or US\$25) per annum. Payment can be made by cheque or by credit card using the form below. Life membership can be obtained by paying the equivalent of 15 years' annual subscription (UK£195 or US\$375). Student membership for one year is UK£6.50 (or US\$12.50) when accompanied by a letter from the student's department certifying full-time student status. For an institution or library, the subscription to JIPA is UK£26 (US\$50).

Member Information:

Please enrol me as a member of the International Phonetic Association, and send me the Journal and other publications as they are issued. *Please type or use BLOCK CAPITALS.*

Title: Prof./Dr./Mr./Ms./Mrs./Miss

Surname:

Other Names:

Postal Address:

Institutional Address (if different):

.....
.....
.....
.....
.....

.....
.....
.....
.....
.....

Telephone:

Fax :

E-mail Address:

Nationality:

Profession:

University Degrees or other distinction:

.....

Signature:

Date:

Contact information will be published in JIPA unless you make a request to the contrary. Please indicate if you do NOT wish any of the following to be published.

DO NOT PUBLISH: E-mail Telephone Fax

Payment:

I enclose a cheque, made payable to the International Phonetic Association, for UK£13/US\$25* being my subscription for the year 1999. *or:*

Please charge my Access / Visa / Mastercard / Eurocard (delete as appropriate) with the sum of UK£13* being my subscription for the year 1999. (Post or fax this information.)

** if paying life, student or institutional membership, please adjust this value.*

Card No:

Expiry Date:

Signature:

Date:

Name and Address as registered with the credit card company:

.....
.....
.....
.....

Send this form to:

Treasurer, International Phonetic Association
Centre for Language & Communication Studies
Arts Building, Trinity College
Dublin 2, Ireland
Fax: + 353 1 677 2694

International Phonetic Association

General Information

For general information on the International Phonetic Association contact:

Secretariat, International Phonetic Association
Department of Linguistics
University of Victoria
Victoria, B.C. V8W 3P4
Canada

Tel: (+1) 250 721-7424
Fax: (+1) 250 721-7423
E-mail: esling@uvic.ca

IPA on the Web

The IPA also maintains a site on the World Wide Web which provides information on the International Phonetic Alphabet, on available phonetic fonts and sound recordings, on subscription to the Association, and on examinations in phonetics. It also has links to other sources of information on phonetics. The address is:

<http://www.arts.gla.ac.uk/IPA/ipa.html>

Membership Services and Publications

The subscription to the Association is £13.00 (or US\$25.00) per annum, which should be sent each January to the Treasurer, International Phonetic Association, Centre for Language and Communication Studies, Trinity College, Dublin 2, Ireland or credited to U.K. Postal Giro Account No. 57 009 4208. Life membership is obtainable by paying the equivalent of fifteen years' annual subscription (£195.00 or US\$375.00). A membership application form is printed opposite.

Members receive two issues of the *Journal* each year. Back issues of the *Journal* (1971-1996) may be obtained from the Treasurer at the following prices:

1971-1974	£2.00 per volume	(to members £1.50)
1975-1976	£3.00 per volume	(to members £2.50)
1977-1978	£4.00 per volume	(to members £3.00)
1979-1982	£6.00 per volume	(to members £4.50)
1983-1986	£8.00 per volume	(to members £6.00)
1987-1991	£20.00 per volume	(to members £10.00)
1992-	£25.00 per volume	(to members £13.00)

Journal of the International Phonetic Association

NOTES FOR CONTRIBUTORS

Policy. The *Journal of the International Phonetic Association* (formerly entitled *Le Maître Phonétique*), is concerned with all aspects of the theory, description, and use of phonetics and phonology. Contributions are subject to review, and to the Editor's final decision as to publication. The primary language of the *Journal* is English, though contributions in other languages of wide scholarly currency, such as French, German, and Russian will be accepted. Contributions in English may use either British or American standard spelling and punctuation.

Manuscript style. Typewritten contributions may be submitted in double spacing with wide margins, printed on one side of the sheet only. The editors prefer, however, that contributions be submitted as computer files attached to an e-mail message to one of the editors, or on an accepted computer medium such as a disc or CD. Most standard word-processing formats (for either PC or Macintosh) are supported. Text should use 12 pt. Times font and IPA Kiel for phonetic symbols if possible. This font is available for purchase from Linguist's Software, Inc., PO Box 580, Edmonds, WA 98020-0580, USA. Alternatively, copies of this font to be used only for the preparation of manuscripts for submission to the *Journal* may be obtained on loan from the editors. Contributors may make their manuscripts conform to *JIPA* style by using the style sheet as a template, available from the editors.

The text should use two levels of headings: (1) Main headings placed above the paragraph, numbered, and formatted flush left, bold; (2) subheadings, also placed above the paragraph and formatted flush left, italic. Contributors are asked to suggest a running title of not more than 50 characters, including spaces. Acknowledgements (with a centred bold heading) follow the text and precede the references. Tables should be included in the text at the appropriate location. The style conventions of the *Journal* should be followed wherever possible, and the Editor reserves the right to alter contributions so that they conform to house style.

Abstracts. Contributions should include an abstract of between 50 and 200 words. Contributions in languages other than English should be accompanied by an abstract in English.

Footnotes and references. Footnotes should be avoided as far as possible. Citations are to be made *in the text* by giving in parentheses the name of the author and the year of publication, and where relevant the page(s) referred to: e.g. "... (Jones 1963) ...", or "... Jones (1983: 453) ...". Where essential, footnotes should be indicated in superscript consecutively throughout the text, and collected as a separate sheet at the end of the manuscript. All works referred to should be listed at the end of the article, using the following format:

References

- ESLING, J.H. (1996). Pharyngeal consonants and the aryepiglottic sphincter. *JIPA* 26, 65–88.
O'CONNOR, J.D. & ARNOLD, G.F. (1973). *Intonation of Colloquial English*. Second edition. London: Longman.
SAMPSON, G. (1987). Probabilistic models of analysis. In Garside, R., Leach, G. & Sampson, G. (editors), *The Computational Analysis of English*, 30–41. London: Longman.

Transcriptions and figures. Phonetic transcriptions should make use of the symbols and conventions of the Association's alphabet in its latest revision.

Figures may be submitted either as computer files, or as clear originals on paper. In either case they should be drawn to a standard that will allow them to be reproduced clearly in photo-reduction. If they are submitted as computer files, it is usually best to make them embedded objects in a word processing program. Black and white or grey scale reproduction is possible, but colours may not be used.

Proofs and offprints. Proofs will be sent to the author (or their nominee), who will be expected to correct them and return them to the Editor, by e-mail or airmail, within five days of receipt. The Editor may also confer with authors by e-mail; please supply an e-mail address if available. Upon publication, 25 copies of a contribution will be supplied to the author free of charge; further offprints may be purchased at cost.

Submission of manuscripts. Details for submission of manuscripts are given in the Editor's Note at the beginning of this issue.