

JOURNAL OF MENTAL SCIENCE.

Asylum Reports have been received for 1910 from those marked with an asterisk:—COUNTRY.—Beds, Berks, Bucks,* Cambridge, Carmarthen,* Chester, Chester (Parkside), Cornwall, Cumberland,* Denbigh, Derby,* Devon, Dorset,* Durham, Essex, Glamorgan,* Gloucester, Hants, Isle of Wight, Hereford, Hertford,* Kent (Barming),* (Chartham),* Lancashire (Lancaster), (Rainhill), (Prestwich),* (Whittingham), Leicester, Lincoln (Kesteven),* (Bracebridge), London (Colney Hatch), (Hanwell), (Banstead), (Canehill), (Claybury), (Bexley), (Stone, Dartford),* Middlesex, Monmouth,* Norfolk,* Northampton, Northumberland, Nottingham, Oxford, Salop,* Somerset (Wells), (Taunton), Stafford (Stafford),* (Burntwood),* (Cheddleton),* Suffolk,* Surrey, Sussex (East), (Chichester), Warwick, Wilts, Worcester,* Yorkshire (Wakefield), (Wadsley), (Menston), (Clifton), (Beverley); BOROUGH.—Birmingham (Winson Green), (Rubery Hill), Bristol, Canterbury, Cardiff,* Derby,* Exeter, Hull, Hayward's Heath,* Ipswich, Leicester, Middlesbrough,* Newcastle, Norwich, Nottingham, Plymouth, Portsmouth, Sunderland,* West Ham.* HOSPITALS.—Manchester, Wonford,* Barnwood,* Albert, Lincoln,* St. Luke's, St. Andrew's, St. Ann's, Coppice, Warneford, Coton Hill, Bethlem, Earlswood, Bootham, Retreat,* Colchester,* Broadmoor, Isle of Man; Metropolitan Asylums Board (Caterham),* (Darent),* (Leavesden),* (Tooting Bec),* (Rochester House); Aberdeen (Kingseat),* Argyll,* Ayr,* Dumfries,* Edinburgh,* Midlothian, Fife, Dundee, Montrose, Inverness,* Lanark, Barony, Glasgow, (Royal),* (Lenzie), Govan,* Gartloch,* Kirklands, Perth,* Murthly, Roxburgh,* Stirling, Baldovan, Armagh, Ballinasloe, Belfast, Carlow, Castlebar, Clonmel, Cork, Downpatrick,* Ennis, Enniscorthy, Farnham, Kilkenny, Killarney, Letterkenny, Limerick, Londonderry, Maryborough, Monaghan, Mullingar, Omagh, Palmerston, Richmond, St. Patrick's,* Sligo, Waterford.

The following Asylum Reports have also come to hand:—Egypt, Cape of Good Hope, Nova Scotia, New Brunswick, Victoria, New York, Massachusetts Hospital, Ontario, Verdun, Warren, Pennsylvania, Philadelphia Friends, Binghampton, Willard, Northampton, Long View, South Australia, Cleveland, Matteawan, New South Wales, Agra and Oudh, Assam, Madras, Bengal, Bombay, Central Provinces, Rangoon, Punjab, North-Western Provinces, Tezpur, Mississippi, Pennsylvania Hospital, Washington, Utica, Long Island, Virginia Central, Illinois West, New Hampshire, Butler, Maryland, Pennsylvania West, South Mountain, Manhattan, Indiana East, Connecticut, Carolina N., Dakota N., Ohio, Carthage, Buffalo, Michigan East, Missouri, Alt Scherbitz, Massachusetts Board, Virginia West, Pennsylvania, Danville, Sheppard and Pratt Hospital, Baltimore, Pennsylvania, Harrisburgs, Pennsylvania, Norristown, Aarhus, Lebanon,* Hudson River, Rochester, Taunton, Iowa, Jamaica, Grahamstown, Pretoria, Egypt,* Albany, Tarrytown, Straits Settlements, Lower Austria.

Authors of Original Papers receive 25 reprints of their articles free of cost if application be made on the slips when returning proof. If any *extra* reprints are required, notice should be at the same time sent to the Printers, Messrs. ADLARD and SON, Bartholomew Close, London, E.C., who will supply them at a fixed charge. Unless instructions are sent by authors of Papers when the proofs are returned, no copies can be guaranteed.

The copies of the *Journal of Mental Science* are regularly sent by carrier, who in every case obtains a receipt of delivery, to the Ordinary and Honorary Members of the Association. Complaints of non-receipt of the JOURNAL should be sent to Messrs. ADLARD. Any change of address should be intimated to the General Secretary.

MALE NURSES' (TEMPERANCE) CO-OPERATION. LIMITED.

Only Addresses — { London: 10, THAYER STREET, MANCHESTER SQUARE, W.
Manchester: 235, BRUNSWICK ST. (Facing Owens College).
Edinburgh: 7, TORPICHEN STREET.

Superior Trained MALE NURSES for Medical, Surgical, Mental, Dipsomania, Fever, and Travelling Cases supplied at a moment's notice, Day or Night. All Nurses supplied by this Association are TOTAL ABSTAINERS. SKILLED MASSEURS supplied. Terms: £1 16s. 6d. to £2 2s. or upwards per week. Nurses to receive their own fees.

ALL NURSES FULLY INSURED AGAINST ACCIDENT.

Telephones { (London), 638, Paddington.
(Manchester), 4690, Central.
(Edinburgh), 2716, Central.

Telegrams { "Assuaged, London."
"Assuaged, Manchester."
"Assuaged, Edinburgh."

W. WALSH, Secretary.

ALWAYS USE

REFLEX

FLOOR POLISH.

REQUIRES NO MIXING WHATEVER.

Brilliantly Polishes Floors, Linoleums, Floorcloths, &c.

Economical, Cleanly, Healthful; Maximum of Lustre for Minimum of Labour

GEO. T. COX & SONS, Ltd.,

9 & 10, ST. MARY-AT-HILL, EASTCHEAP, LONDON, E.C.

This Polish is specially adapted for use in Public Institutions and other large establishments. Samples Free on application.

Temperance Male Nurses' Co-operation.

London: 43, New Cavendish St., W.
Manchester: 176, Oxford Road.
Glasgow: 28, Windsor Terrace.

Superior trained Male Nurses for Medical, Surgical, Mental, Dipsomania, Travelling, and all cases. Nurses reside on the premises, and are always ready for urgent calls, Day or Night. Skilled Masseurs and good Valet Attendants supplied.

Terms from £1 16s. 6d. The Nurses are fully insured against accident.

TELEPHONES:
London: 1472 Paddington.
Manchester: 5213 Central.
Glasgow { 949 Charing X (Nat.)
 { 477 Central (P. O.)

TELEGRAMS:
"Tactear, London."
"Tactear, Manchester."
"Surgical, Glasgow."

M. D. GOLD, Sec.

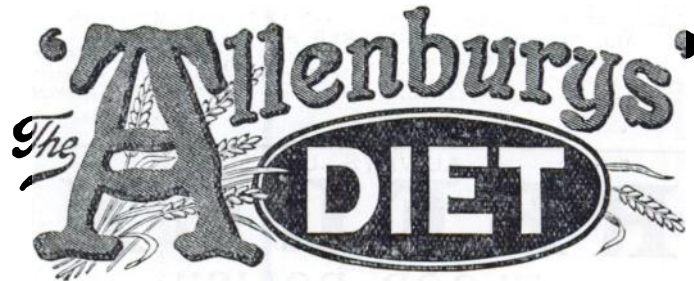
NOTICE TO ADVERTISERS.

All communications concerning Advertisements in 'THE JOURNAL OF MENTAL SCIENCE' should be addressed to

Messrs. ADLARD & SON,
Bartholomew Close,
London, E.C.

TELEPHONE: HOLBORN 927.

Mental or Physical Fatigue



A PARTIALLY PRE-DIGESTED MILK AND WHEATEN FOOD.

When brain or body is weary the digestive powers are weakened and distaste for ordinary food is often experienced. Under such circumstances the "ALLENBURYS" DIET is especially valuable. It is pleasant to take, easily digested and assimilated, and speedily restorative. Thus it helps the system to recover tone and vigour.

By the use of the "ALLENBURYS" DIET all trouble of peptonising milk and farinaceous foods is overcome. In the sick room it will be found extremely useful as the food is easily digested and assimilated, is quickly made, and only the exact quantity required need be prepared at a time.

The "ALLENBURYS" DIET is made from pure, rich milk and whole wheat, both ingredients being partially pre-digested during manufacture. It can be taken by those who cannot digest cow's milk, and provides a light and very nourishing diet for Invalids, Dyspeptics and the Aged.

For travellers by sea or land this complete food will be found exceedingly valuable.

Made in a minute. Add boiling water only.

A Sample with full particulars sent free on request.

ALLEN & HANBURYS Ltd.,
37 Lombard Street, London, E.C.

SOUTH BEACON,
HADLOW DOWN, BUXTED, SUSSEX.
ESTABLISHED 1892.

Telegrams: "Hadlow Down." Stations: Buxted, Mayfield or Heathfield.

**40 Acres of
Farm and
Recreation
Ground.
Riding,**

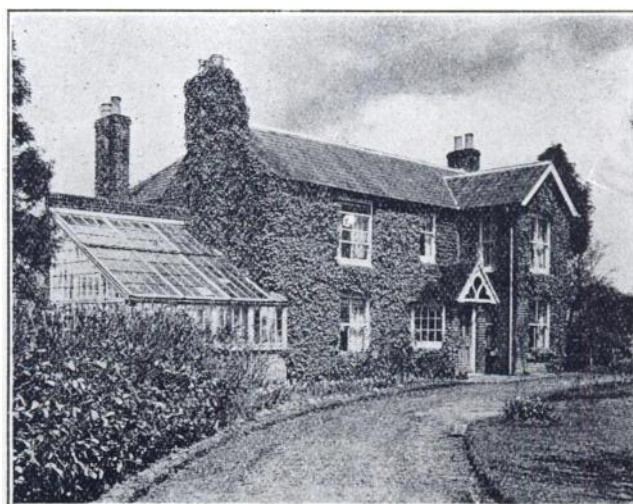


**Driving,
Motoring,
Golf
and all
Outdoor
recreations.**

For the Treatment of Nervous or slight Mental Breakdown.

TERMS FROM 3 GUINEAS PER WEEK.

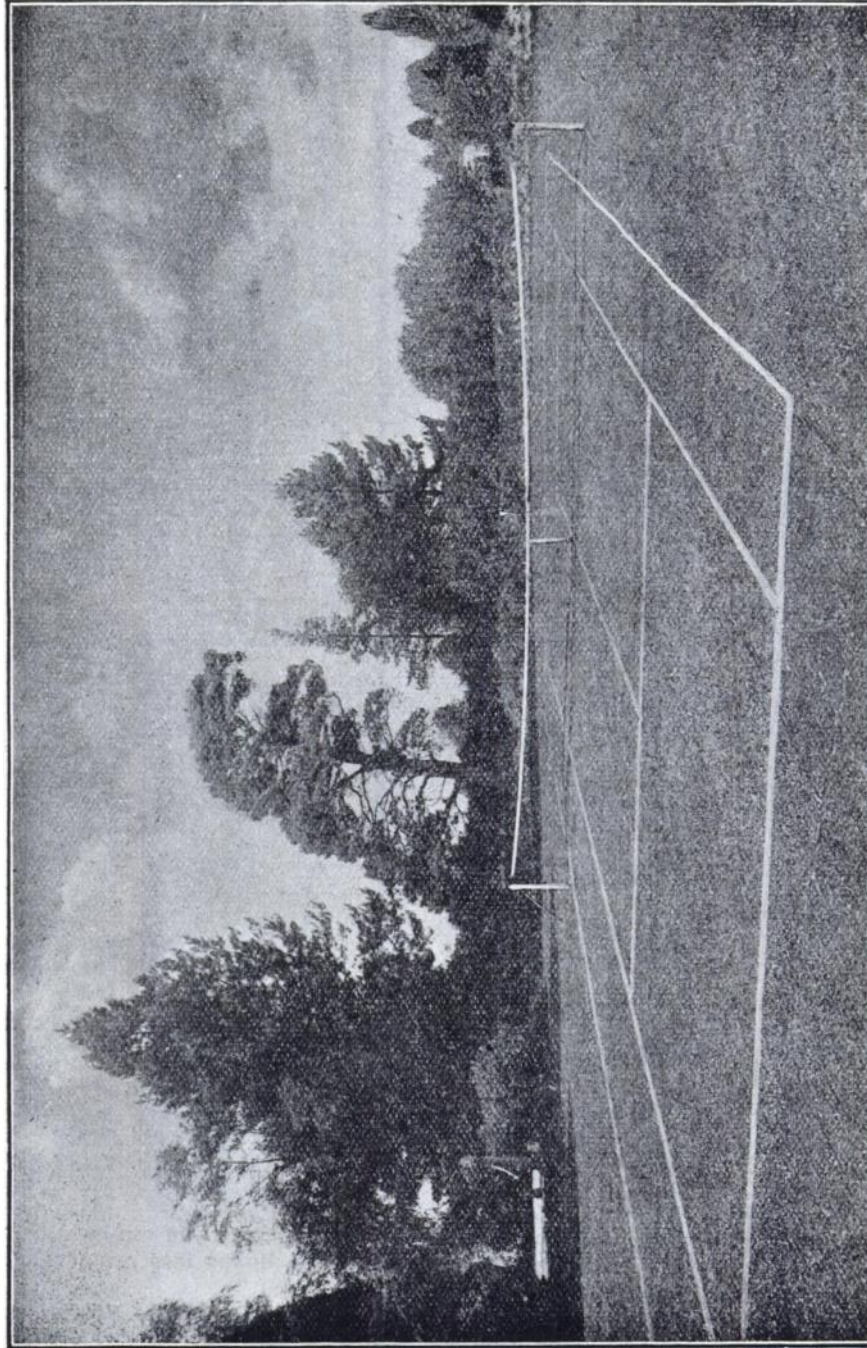
THE CROFT.



A comfortable cottage residence, where one gentleman can have special care and attention without necessarily coming into contact with other patients.

If desirable he can enjoy all the recreations provided at South Beacon—Motoring, Riding, Golf.

SOUTH BEAGON.



Separate Lawns for Oroquet, Lawn Tennis and Bowls. Golf.

JOURNAL OF MENTAL SCIENCE.

CONTENTS FOR JULY, 1912.

	Pages.
Original Articles.—	
The Production of Leucocytosis in the Treatment of Mental Diseases ; by R. Dods Brown, M.D., F.R.C.P.E., and Donald Ross, M.B., Ch.B.—Abnormal Development of Scalp ; by T. W. McDowall, M.D., and Colin McDowall, M.D.—Some Dreams and their Significance ; by Sir George H. Savage, M.D.—The Varieties of Dementia, and the Question of Dementia in Relation to Responsibility ; by Robert Jones, M.D., F.R.C.P.Lond.—An Investigation as to the Therapeutic Value of Thyroid Feeding in Mental Diseases ; by Richard Eager, M.D.Aber., M.P.C.—Emanuel Swedenborg : Psychologist ; by Hubert J. Norman, M.B.—The Physical Basis of Mental Disease ; by Ivy Mackenzie, M.B., B.Sc.	389—475
Clinical Notes and Cases.—	
Some Cases of " Medico-Legal " Interest ; by F. Rainsford, M.D.—Observations on a Case of Dementia Præcox ; by James Parker, L.R.C.S. & P.I.	476—487
Reviews and Notices.—	
A New Logic	488—493
Epitome.—	
Progress of Psychiatry in 1911 : America, by Dr. WILLIAM McDONALD, Jun. ; France, by RENÉ SEMELAI GNE ; Germany, by Dr. JOHANNES BRESLER.—A Review of the Congress of Alienists and Neurologists of French-Speaking Countries held at Tunis, April 1st to 7th, 1912, by Dr. ROBERT JONES	493—521
Epitome of Current Literature.—	
1. Physiological Psychology.—2. Clinical Psychiatry.—3. Pathology of Insanity	521—528
Notes and News.—	
The Medico-Psychological Association of Great Britain and Ireland.—South-Eastern Division.—South-Western Division.—Northern and Midland Division.—Irish Division.—Correspondence.—The Library of the Medico-Psychological Association.—Notices of Meetings.—Appointments	529—538

ADLARD AND SON, IMPR., LONDON AND DORKING.