

VOL. XCIII, NO. 391

APRIL, 1947

# THE JOURNAL OF MENTAL SCIENCE

(THE BRITISH JOURNAL OF PSYCHIATRY)



BY AUTHORITY OF  
THE ROYAL MEDICO-PSYCHOLOGICAL ASSOCIATION

EDITOR-IN-CHIEF  
**G. W. T. H. FLEMING**

CO-EDITORS  
**Alexander Walk and P. K. McCowan**

AND WITH THE ASSISTANCE OF

<b>E. D. Adrian</b>	<b>E. G. Holmes</b>
<b>F. C. Bartlett</b>	<b>C. J. McCarthy</b>
<b>S. M. Coleman</b>	<b>Alfred Meyer</b>
<b>C. J. C. Earl</b>	<b>Lionel S. Penrose</b>
<b>Sir A. Fleming</b>	<b>A. A. W. Petrie</b>
<b>F. L. Golla</b>	<b>E. T. O. Slater</b>
<b>W. Stephenson</b>	

LONDON  
**J. & A. CHURCHILL, LTD.**

Published Four times Yearly, Ten Shillings and Sixpence net

# THE JOURNAL OF MENTAL SCIENCE

---

Communications on general editorial matters, including MSS. for publication, books for review and other printed matter, and communications regarding the *Epitome* section, including journals to be abstracted, should be sent to the **Editor-in-Chief, Barnwood House, Gloucester.**

Communications and inquiries regarding sales should be addressed to the Publishers, **Messrs. J. & A. CHURCHILL, Ltd., 104, Gloucester Place, Portman Square, London, W.1;** and those regarding Advertisements to **Messrs. S. & H. FRETWELL, Ltd., 92, Fleet Street, London, E.C.4.** Phone: Central 7961.

---

## THE ROYAL MEDICO-PSYCHOLOGICAL ASSOCIATION

---

### PUBLICATIONS

From MESSRS. ADLARD & SON, LTD.,  
Bartholomew Press, Dorking.

**"The Clinical Study of Mental Disorders."** By J. R. LORD, C.B.E., M.D., F.R.C.P.E.  
Price 6/-. Postage 4d.

**The Charter and Bye-Laws of the Association.** Price 1/-. Postage 1d.

**Engraved Book-Plate of the Association.** Price 1/-. Postage 1d.

**Enquiry (History) Form,** supplied in three sizes: 16 pp., 9 $\frac{1}{2}$ " x 6 $\frac{1}{2}$ "; 8 pp., 12 $\frac{3}{4}$ " x 8" 4 pp., 16" x 10". Prices on application.

**Card of Practical Instruction.** Prices on application.

From MESSRS. J. & A. CHURCHILL, LTD.:

**Catalogue of the Library of the Royal Medico-Psychological Association.** 1928.  
Price 2/-. Post free.

From BAILLIÈRE, TINDALL & COX:

**"Handbook for Mental Nurses."** 7th edn. 1923. Price 7/- net.

**"Manual for Mental Deficiency Nurses."** 1931. Price 6/6 net.

**"Occupational Therapy Brochure."** 1938. Price 1/-.

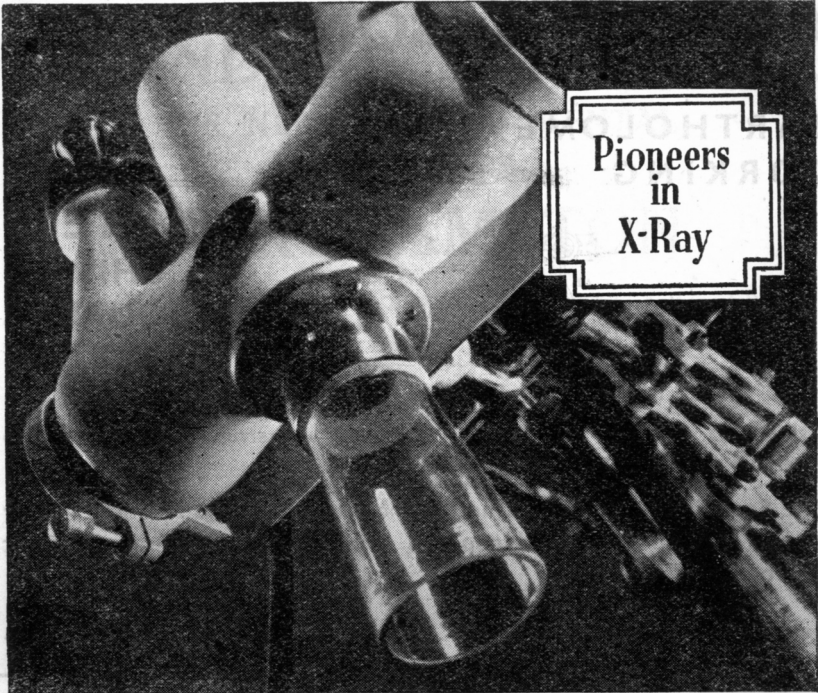
From the SECRETARY, 11 Chandos Street, London, W. 1:

**"Regulations and Rules for the Examinations for the Certificates of Proficiency in Mental Nursing and in Nursing Mental Defectives."** Price 1/-.  
Postage 1d.

**"Syllabuses for the Examinations for the Certificates of Proficiency in Nursing Mental Defectives."** Price 2d. each. Postage 1d.

**Examination Papers, 1928-38** (reprinted). Price 1/6. Postage 1d.

*Made and printed in Great Britain.*



*Tribute to Roentgen*

There can be no doubt that "Solus-Schall" X-Ray Equipment, today, challenges the best that the world produces. It can be for no other reason that it has been singled out for vital work in hospitals by the Government and the Medical Profession, as well as by industrialists everywhere, and that extensive orders are today being received from countries far and wide.

"Solus-Schall" concentrate the accumulated experience of over fifty years solely on the manufacture of X-Ray products and the full benefit of their knowledge and research is entirely at the disposal of interested persons, before and after purchase, operating through a Sales, Repairs, and Replacements Organisation throughout the country. Please write.

**SOLUS-SCHALL**

*\* Specialists in X-Ray Equipment for over Fifty Years \**

SOLUS-SCHALL LTD., 18 NEW CAVENDISH STREET, LONDON, W.1  
*Scientific S.S. 21*

# ADLARD & SON

LIMITED

**BARTHOLOMEW PRESS  
DORKING — SURREY**



**PRINTERS  
OF THIS ::  
:: JOURNAL**

ESTIMATES SUBMITTED PROMPTLY

FOUNDED IN 1766, the Firm has continued uninterruptedly, and is able to undertake **ALL CLASSES OF PRINTING.**

The Staff is **Specially Trained** in the production of all printed matter connected with **Private Hospitals and Homes, Medical, Scientific and other Institutions.**

Regd. Offices : 104/200 BISHOPSGATE, E.C.2.

Tel.: DORKING 2086.

## HOLME LACY HOSPITAL

**HOLME LACY  
HEREFORD ::**

**FOR LADIES SUFFERING FROM  
NERVOUS AND MENTAL DISORDERS.**

This Hospital is situated in 30 acres of garden with magnificent views of the Wye Valley, and homelike surroundings.

Every facility for specialized investigation and treatment provided.

Voluntary, Temporary and Certified patients received.

Terms from Four Guineas weekly.

For further particulars apply to the Physician-Superintendent.

Telephone : Burghill 4.

## Wonford House, Exeter

A Registered Hospital for treatment of mental disorders of the educated classes. Cases under certificate, voluntary and temporary patients, received for treatment. Modern methods of treatment available. Terms moderate.

Apply Medical Superintendent.

Tel. Exeter 2642

## MENTAL HOSPITALS, INSTITUTIONS, HOMES, ETC.

# ST. ANDREW'S HOSPITAL

## FOR NERVOUS AND MENTAL DISORDERS

# NORTHAMPTON

*President:* THE MOST HON. THE MARQUESS OF EXETER, K.G., C.M.G., A.D.C.

*Medical Superintendent:* THOMAS TENNENT, M.D., M.R.C.P., D.P.H., D.P.M.

This Registered Hospital is situated in 130 acres of park and pleasure grounds. Voluntary patients, who are suffering from incipient mental disorders or who wish to prevent recurrent attacks of mental trouble, temporary patients, and certified patients of both sexes are received for treatment. Careful clinical, bio-chemical, bacteriological, and pathological examinations. Private rooms with special nurses, male or female, in the Hospital or in one of the numerous villas in the grounds of the various branches can be provided.

### WANTAGE HOUSE

This is a Reception Hospital in detached grounds with a separate entrance, to which patients can be admitted. It is equipped with all the apparatus for the complete investigation and treatment of Mental and Nervous Disorders by the most modern methods; insulin treatment is available for suitable cases. It contains special departments for hydrotherapy by various methods, including Turkish and Russian baths, the prolonged immersion bath, Vichy Douche, Scotch Douche, Electrical baths, Plombières treatment, etc. There is an Operating Theatre, a Dental Surgery, an X-Ray Room, an Ultra-Violet Apparatus, and a Department for Diathermy and High-Frequency treatment. It also contains Laboratories for biochemical, bacteriological, and pathological research. Psychotherapeutic treatment is employed when indicated.

### MOULTON PARK

Two miles from the Main Hospital there are several branch establishments and villas situated in a park and farm of 650 acres. Milk, meat, fruit and vegetables are supplied to the Hospital from the farm, gardens, and orchards of Moulton Park. Occupational therapy is a feature of this branch, and patients are given every facility for occupying themselves in farming, gardening and fruit-growing.

### BRYN-Y-NEUADD HALL

The seaside house of St. Andrew's Hospital is beautifully situated in a Park of 330 acres at Llanfairfechan, amidst the finest scenery in North Wales. On the North-West side of the Estate a mile of sea-coast forms the boundary. Patients may visit this branch for a short seaside change or for longer periods. The Hospital has its own private bathing house on the seashore. There is trout-fishing in the park.

At all the branches of the Hospital there are cricket grounds, football and hockey grounds, lawn tennis courts (grass and hard courts), croquet grounds, golf courses, and bowling greens. Ladies and gentlemen have their own gardens, and facilities are provided for handicrafts, such as carpentry, etc.

For terms and further particulars apply to the Medical Superintendent (Telephone No. 2356 and 2357 Northampton), who can be seen in London by appointment.

## HEIGHAM HALL, NORWICH

### PRIVATE MENTAL HOME

for Nervous and Mental illness. All forms of treatment available. Fees from 4 gns. per week upwards, according to requirements. Vacancies occasionally exist at reduced fees on the recommendation of the patient's own physician.

Apply to Dr. J. A. SMALL.

TELEPHONE: NORWICH 20080.

## LAVERTOCK HOUSE SALISBURY WILTS

### PRIVATE MENTAL HOME FOR LADIES AND GENTLEMEN

Completely up to date. Lovely house and grounds (18 acres). Certified and uncertified cases taken. Facilities for going to the seaside.

ESTABLISHED OVER 200 YEARS

Apply to the Med. Supt. for illustrated brochure.

Tel.: SALISBURY 2612.

## MENTAL HOSPITALS, INSTITUTIONS, HOMES, ETC.

**CHEADLE ROYAL** CHEADLE,  
CHESHIRE

**A Registered Hospital for MENTAL DISEASES, and its  
Seaside Branch, GLAN-Y-DON, Colwyn Bay, N. Wales.**

THE object of this Hospital is to provide the most efficient means for the treatment and care of PATIENTS OF BOTH SEXES suffering from MENTAL and NERVOUS DISEASES. The Hospital is governed by a Committee appointed by the Trustees of the Manchester Royal Infirmary.

VOLUNTARY, TEMPORARY and CERTIFIED PATIENTS RECEIVED.

For Terms and further information apply to the MEDICAL SUPERINTENDENT.

Telephone: GATLEY 2231.

**CHISWICK HOUSE** Phone: PINNER 234  
PINNER,  
MIDDLESEX

**A Private Hospital for the Treatment and Care  
of Mental and Nervous Illnesses in Both Sexes.**

A modern country house, 12 miles from Marble Arch, in attractive and secluded surroundings. Fees from 10 guineas per week inclusive.

Cases under certificate, Voluntary and "Temporary" Patients received for treatment.

DOUGLAS MACAULAY, M.D., D.P.M.

**FENSTANTON,** CHRISTCHURCH ROAD,  
STREATHAM HILL, S.W. 2.

**Emergency Address: HITCHAM PLACE, BURNHAM, BUCKS.**

A Private Home for the Care and Treatment of a limited number of Ladies with Mental and Nervous Disorders. Certified, Temporary and Voluntary Patients received.

Large Mansion with 20 acres of grounds. Home-like surroundings.

Apply Dr. MADELINE LOCKWOOD, Resident Physician. Telephone: Burnham 624.

**HAYDOCK LODGE,** NEWTON-LE-WILLOWS,  
LANCASHIRE

For the reception and treatment of PRIVATE PATIENTS of both sexes of the UPPER AND MIDDLE CLASSES suffering from Mental and Nervous Disorders, Alcoholism and Drug Addiction, either voluntary, temporary or under certificate. Patients are classified in separate buildings according to their mental condition.

Situated in park and grounds of 400 acres. Self-supported by its own farm and gardens in which patients are encouraged to occupy themselves. Every facility for indoor and outdoor recreation. For terms, prospectus, etc., apply MEDICAL SUPERINTENDENT.

Telegraphic Address: "Street," Ashton-in-Makerfield.

Phone: 7311 Ashton-in-Makerfield.

**THE COPPICE, Nottingham,** REGISTERED HOSPITAL  
FOR MENTAL DISEASES.

President—THE RT. HON. EARL MANVERS, M.C.

This Institution, for the reception of Private Patients of both sexes of the Upper and Middle Classes only, at moderate rates of payment, is beautifully situated in its own grounds about two miles from Nottingham. Electro-Convulsion Therapy, Prolonged Narcosis, etc., carried out. There is a branch Seaside Villa at Lowestoft. **VOLUNTARY, TEMPORARY AND CERTIFIED PATIENTS ARE RECEIVED.**

For Terms, etc., apply to Dr. WOODS, Medical Superintendent.

Telephone: NOTTINGHAM 64117.

**CITY OF LONDON MENTAL HOSPITAL**  
Near DARTFORD, KENT.

Ladies and Gentlemen received for treatment as  
VOLUNTARY, TEMPORARY or CERTIFIED PATIENTS,  
at a weekly fee of £3 : 3 : 0 and upwards.

APPLY MEDICAL SUPERINTENDENT.

TELEPHONE: DARTFORD 2901  
2902

# TO COMBAT DEPRESSION characterized by 'chronic fatigue'

Sample  
and  
literature  
sent  
on the  
signed  
request of  
physicians

Depressed patients '...suffering from psychomotor inhibition complain of feeling tired, of not being able to get started on their daily tasks, and of an abnormal inclination to procrastinate. They make up their minds that they are going to do a certain thing but they never seem to get to it. Everything seems too big for them. ...' \*

'Benedrine' Tablets are particularly valuable in the presence of 'chronic fatigue'. They will, in most cases, help to overcome the depression and thus enable the patient to make a sincere and constructive effort to surmount his difficulties.

\* 'Fatigue as a Symptom in Depressed Patients,' *Journal—Lancet* (1945), 65, 233

## 'BENZEDRINE' TABLETS

MENLEY & JAMES LIMITED

123 COLDHARBOUR LANE, LONDON, S.E.5

BTC45

Each tablet contains 5 mg.  
amphetamine sulphate

# CLIFFDEN, TEIGNMOUTH

FOR THE EARLY TREATMENT OF  
NERVOUS DISORDERS AND PATIENTS  
. . . NEEDING REST AND CARE . . .

A well appointed House with spacious balconies and extensive views of the South Devon Coast. Beautiful Garden and own Dairy in 35 acres.

In the same grounds,

**ROWDENS**, a comfortable house with lovely views  
Private road to the beach

There is also a charming house,

**EBWORTHY, MANATON**,  
situated in 25 acres, 1,100 ft. up for bracing moorland air.

Resident Physicians :

BERTHA M. MULES, M.D., B.S. ANNE S. MULES, M.R.C.S., L.R.C.P.  
Telephones: TEIGNMOUTH 289 & 537.

# **VIRGINIA WATER HOLLOWAY SANATORIUM**

*for the Treatment of every kind of*

**NERVOUS AND MENTAL DISORDER**

*by modern methods, after full investigation*

**Voluntary, Temporary and Certified Patients**

The branch establishment at Canford Cliffs, Bournemouth,  
is reserved for the treatment of psychoneurosis

**Fees: first two months £8 8s. per week, thereafter £6 6s. per week;  
single bedrooms £2 2s. per week more. No other extras**

**Medical Superintendent: D. N. PARFITT, M.D., M.R.C.P., D.P.M.**

**Telephone: Wentworth 2241      Telegrams: "Sanatorium, Virginia Water"**

For particulars of Advertisements  
apply to—

**S. & H. FRETWELL LTD.**

**92, Fleet Street, London, E.C. 4**

---

**Telephone - - CENTRAL 5587/8**

---



THE  
**INTERNATIONAL JOURNAL**  
OF  
**PSYCHO-ANALYSIS**

Founded by

**ERNEST JONES**

*Official Organ of the International Psycho-Analytical Association*

Edited by

**ADRIAN STEPHEN**

With the assistance of

MARJORIE BRIERLEY (London)

C. P. OBERNDORF (New York)

SYLVIA PAYNE (London)

JOHN RICKMAN (London)

*Contents of Volume XXVII, Parts 1 & 2, 1946*

ORIGINAL PAPERS:

On Group Analysis	...	...	...	Foulkes, S. H.
An Unusual Neurosis Following Head Injury	...	...	...	Rosenberg, Elizabeth.
The Treatment of Psychoneurosis in the British Army	...	...	...	Thorner, H. A.
The Mental and the Physical Origins of Behaviour	...	...	...	Adrian, E. D.
Hypnotism and Suggestion (1888)	...	...	...	Freud, Sigmund.
From King Lear to the Tempest	...	...	...	Sharpe, Ella Freeman.
Object-Relationships and Dynamic Structure	...	...	...	Fairbairn, W. Ronald D.
A Valedictory Address	...	...	...	Jones, Ernest.
<i>Abstracts. Book Reviews. Publications Received. Obituary. Bulletin of the International Psycho-Analytical Association.</i>				

*Editorial Communications* should be sent to the Editor, Dr. Adrian Stephen, 1, Upper Harley Street, W.1, or to Dr. C. P. Oberndorf, 112 West 59th Street, New York.

*Business Communications* should be sent to the Publishers, Baillière, Tindall & Cox, 7 & 8 Henrietta Street, Covent Garden, London, W.C.2.

The Annual Subscription is **30s.** per Volume  
of Two Double-Parts

*Published for the Institute of Psycho-Analysis by*

**BAILLIÈRE, TINDALL & COX**

**7 & 8 Henrietta Street, London, W.C.2**

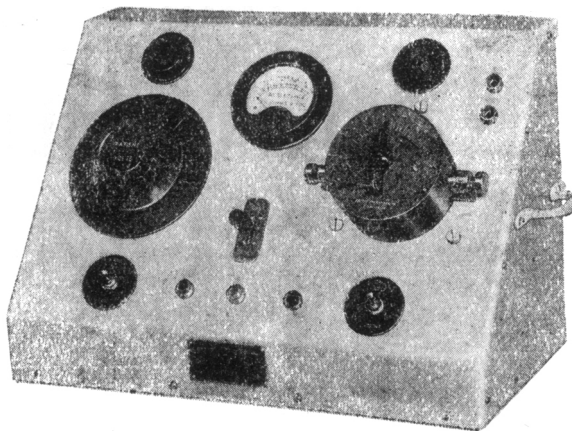
## ELECTRIC CONVULSION THERAPY

for treatment of Melancholia, Mental & Psychiatric Disorders  
(EDISWAN MODEL)

### MEDICAL

#### OBSERVATIONS:

Many thousands of cases have been successfully treated by this method, including sufferers from INVOLUTIONAL MELANCHOLIA, CLIMACTERIC DEPRESSION, RECENT MANIA, ACUTE PSYCHOSES AND OTHER PSYCHIATRIC DISORDERS.



A new apparatus constructed to specification of Mr. GREY WALTER. The ideal method for inducing epileptiform seizures. Administration is simple, speedy and effective. Complete amnesia of patient. Apparatus is portable and is in use in more than 250 Hospitals.

Please write for brochure describing technique together with clinical data and bibliography.

**COX-CAVENDISH ELECTRICAL CO., LTD.**

Phone : ] 45-47 Marylebone High Street, London, W. 1 [WELbeck 2886-7

## Northumberland House Green Lanes, Finsbury Park, N. 4

A PRIVATE HOSPITAL for the treatment of Mental and Nervous illnesses. Conveniently situated and easy of access from all parts. Six acres of ground, facing Finsbury Park. Voluntary and Temporary Patients received without certification. E.C.T., Group Psychotherapy. Trained Resident and Visiting Staff.

Telephone: Stamford Hill 7866/7 (2 lines.)      Telegrams: "Subsidiary, London."

For further particulars apply to the Medical Superintendent,

**ROBERT M. RIGGALL,**  
Member, British Psycho-Analytical Society.

## BETHLEM ROYAL HOSPITAL

Telephone: SPRINGPARK 1180-1181.

President: HER MAJESTY QUEEN MARY.  
**FOR NERVOUS AND MENTAL  
DISORDERS**

Phy.-Sup.: J. G. HAMILTON, M.D., D.P.M.  
**Monks Orchard, Eden Park,  
Beckenham, Kent**

This Registered Hospital is situated at Monks Orchard in some 250 acres of park, pleasure and farm grounds.

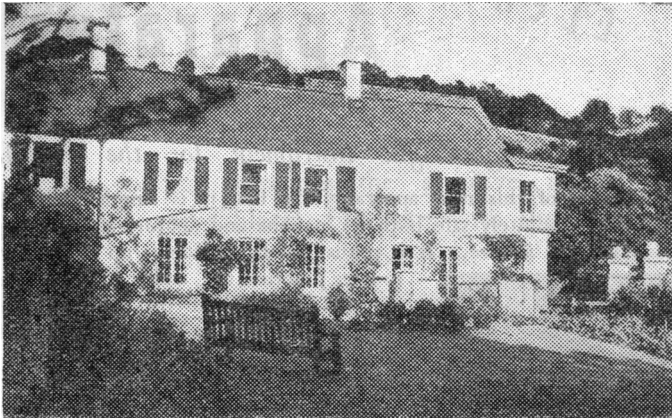
Applications can be considered on behalf of patients of the educated classes in a presumably curable condition. With a view to early treatment, voluntary or uncertified patients are admitted. Patients who can contribute 5 guineas weekly towards the cost of treatment and maintenance may be received as vacancies arise. The Committee will also consider applications for admission at lower rates and in certain cases will be prepared to admit patients free of charge. The comfort of sensitive patients is greatly enhanced by the fact that the majority are given single bedrooms.

Additional Accommodation for Male Patients is now available by reason of completion of war damage repairs.

The Medical Staff have access to a panel of Consultants in cases which present unusual symptoms requiring specialised investigation and treatment.

# BARNWOOD HOUSE

## GLOUCESTER



CRICKLEY COURT—ONE OF THE SEPARATE VILLAS

A REGISTERED HOSPITAL for the CARE and TREATMENT of LADIES and GENTLEMEN suffering from NERVOUS and MENTAL DISORDERS. Within two miles of the G.W. Railway, and L.M.&S. Railway Stations at Gloucester, the Hospital is easily accessible by rail from London, and all parts of the United Kingdom. It is beautifully situated at the foot of the Cotswold Hills, and stands in its own grounds of over 300 acres. Voluntary Patients of both sexes are also received for treatment. Special accommodation is also provided at four villa residences, all of which stand in their own grounds and are entirely separate from the main Hospital. All the most modern methods of treatment including electric shock and prefrontal leucotomy are used.

*For Terms, etc., apply to*

**G. W. T. H. FLEMING, M.R.C.S., L.R.C.P., D.P.M.,**  
**Physician Superintendent,**

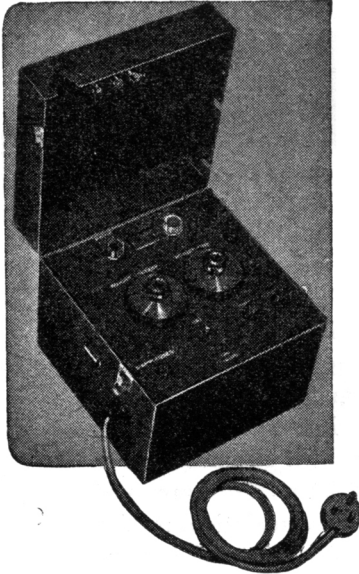
*who may be seen in London by appointment*

TELEPHONE: No. 6207 GLOUCESTER

# The Caplan ELECTROCONVULSANT Apparatus

## *An Improved Lightweight Instrument for the Psychiatrist*

The advantages of this new apparatus are that it is simple and quick to operate, it is absolutely safe both for patient and doctor, and it is light in weight and handy in size. It is robust so that it stands up to the strain of routine practical use, and it has been designed in such a way that the risks of technical breakdown have been reduced to a negligible minimum.



**STANDARD MODEL.** 200/250 volts, 50 cycles A.C. The output is 40-150 volts for 0.1-1.0 second. It is housed in a strong metal cabinet measuring 9 in. x 9 in. x 8 in., and weighs 16 lbs.

**PRICE 40 GNS.** One year's guarantee. Models are available for immediate delivery on 14 days trial.

Its improved design is based on the rejection of the idea that the convulsant dose can be calculated in advance by measuring the resistance of the patient. Circuits for the measurement of this resistance have therefore been eliminated, thus simplifying not only the construction but also the working of the apparatus (Gerald Caplan, *J.Ment.Sci.*, 1945, 91,200).

A new type of electronic time switch is incorporated, which gives an entirely safe and reliable performance under all conditions.

An arrangement of push button switches prevents accidents to the patient or the nursing staff while the electrodes are being adjusted, and at the same time reduces the actual procedure of administering the shock to its simplest terms. For this reason, and also because the apparatus is so small and easy to handle, the treatment time is greatly reduced.

## MULTITONE ELECTRIC COMPANY, LIMITED.

223-7 St. John Street, Clerkenwell, London. E.C.1

C.R.C.103

# **ELIXIR GABAIL**

(BROMO-VALERIANATE)

**The Ideal Sedative in all Nervous Affections**

Elixir Gabail combines the sedative action of Bromide and Chloral Hydrate with the nervine and anti-spasmodic deodorised Valerianate. Pharmaceutically it is as pleasant and palatable as it is efficacious from the therapeutic standpoint, the disagreeable odour and flavour of the Valerian having been completely removed without in any way impairing its therapeutic value.

**In Hysteria and Psychasthenia it relieves nervous excitement and produces a calm state of mind that is conducive to rapid recovery. It is also of value in states of temporary emotional excitement, in Hypochondriasis and Melancholia.**

**Dosage:** One tablespoonful in water twice or thrice daily. As a hypnotic: two tablespoonfuls in water at bedtime.

Supplied in bottles of 187 c.c. and in bulk for Hospital use.

*Literature and Samples on request.*

**THE ANGLO-FRENCH DRUG Co. Ltd.**  
**11-12, Guilford Street, London, W.C. 1**

---

## - Short sedation to *prolonged narcosis*

---

One of the advantages of 'Soneryl' brand butobarbitone is the ease with which, by graduating the dose, the degree of action may be varied from mildly sedative to the deeply hypnotic.

This is of particular interest in psychiatric practice for it enables the one drug to be used as a hypnotic in all the mental states from simple anxiety to intractable psychosis.

The most generally useful form of 'Soneryl' is the tablet of  $1\frac{1}{2}$  grains. For those cases where it is impracticable to give the drug by mouth, suppositories containing grains 3, grains 5, and grains 10 of the active product are available.

SUPPLIES : Tablets in containers of 12, 25, 100 and 500  
Suppositories in boxes of 5



*manufactured by*

**MAY & BAKER LTD**

*distributors*

**PHARMACEUTICAL SPECIALITIES (MAY & BAKER) LTD. DAGENHAM**

4715