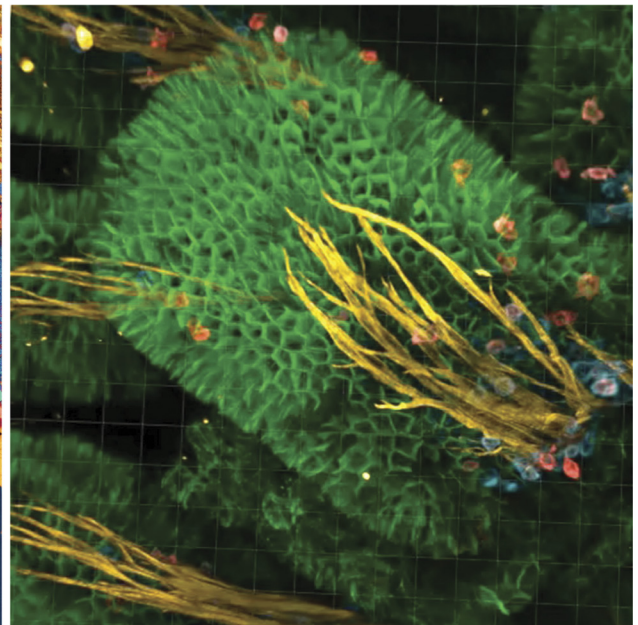
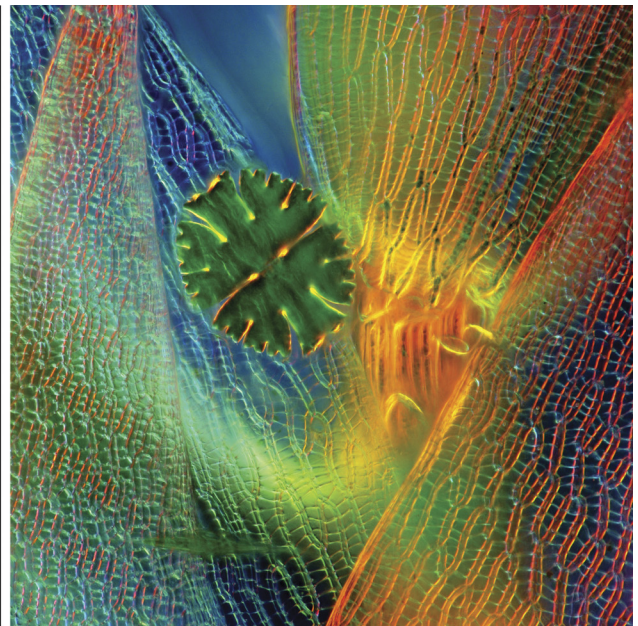


Microscopy TODAY

Volume 30 Number 5 2022 September



Radiation
hard

*unsaturated
Zero Loss Peak*

DECTRIS
detecting the future

<https://doi.org/10.1017/S151929522000943> Published online by Cambridge University Press

The highest
frame rate
*up to 18,000 frames
per second*

Noise-free
detection
*single-electron counting
across the whole spectrum*

High dynamic
range
*over seven orders of
magnitude*

The highest
count rate
*more than 1pA/pixel with
continuous readout*

Make the most of
electron microscopy with
hybrid-pixel detectors



*Represented data: EELS of h-Boron Nitride spectrum at 60 keV, 105 pA, 100 s exposure, collected with DECTRIS ELA ®.
Courtesy of NION Co*

Expand your Knowledge of Microscopy with MSA Membership!

Whether your primary focus is in light, electron, or scanning probe microscopy, or the biological or the physical sciences, MSA takes your knowledge to the next level!

Members Receive:

- A personal subscription to MSA's official journal, *Microscopy and Microanalysis*, and MSA's popular bi-monthly magazine, *Microscopy Today*.
- Peer Networking through the Society's Focused Interest Groups and Local Affiliated Societies.
- Discounts on books, journals and other educational materials.
- MSA Awards Programs, Scholarships, Speaker Opportunities, and more!



Join MSA Today!
Visit www.microscopy.org

DiATOME Diamond Knives

the incomparable
Diamond Knife for
all fields of research...

Please visit our website
for our complete range
of Diamond Knives:
www.diatomeknives.com

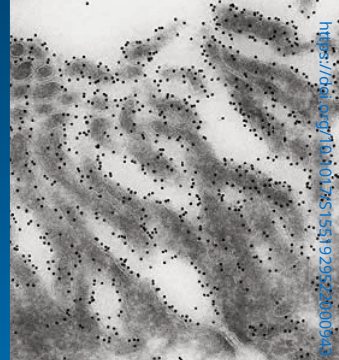
cryo 25°, 35°, 45°

Available for wet or dry sectioning.

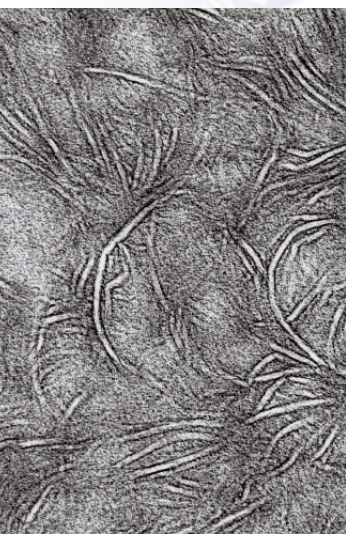
The Cryo 25° knife is designed for sectioning frozen hydrated specimens. The 25° angle results in the least possible compression and the best structure preservation.

The 45° knife is well suited for routine cryo sectioning.

The 35° knife allows you to section with considerable reduction of mechanical damage to the specimen (up to 20% less compression as compared to the 45° knife) and, in turn, better structural preservation of most frozen samples.



Immunogold labeling is present in the brushborder and endocytotic vesicles of a proximal tubular cell. 25,000x magnification. B. Guhl and J. Roth, Inst. for Cell- and Molecular Pathology, University of Zürich.



trimtool 20, 45, 90

One trimming tool for all of your trimming needs, be it at room or cryo temperatures.

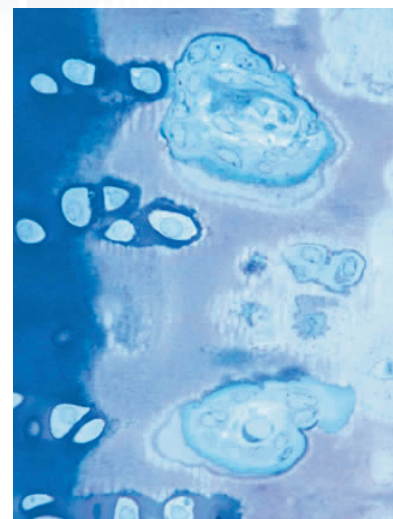
A well trimmed sample is a precondition for perfect section ribbons. Due to the extreme sharpness of our diamond blades, less mechanical damage is applied to the sample during trimming. Very shiny sample faces and precise sides are the result.

histo cryo

Available as boats for wet cryo sectioning, and triangular holders for dry cryo sectioning. Made of a special copper/nickel alloy, which guarantees the best heat/cold transmission.

- Knives are available in 45° angle.
- Section thickness range 0.2-2µm.
- Cutting edge length 4, 6, and 8 mm.

E. B. Hunziker, M. E. Müller Institute for Biomechanics, University of Bern. Rabbit joint, calcified cartilage/bone. X760



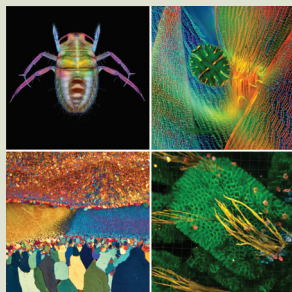
120,000x magnification. Ronald Walter, BASF Aktiengesellschaft, Polymer Physics, D-67056 Ludwigshafen.

DiATOME U.S.

P.O. Box 410 • 1560 Industry Rd. • Hatfield, Pa 19440
Tel: (215) 412-8390 • Fax: (215) 412-8450
email: info@diatomeknives.com • www.diatomeknives.com

Contents

About the Cover



2022 *Microscopy Today* Micrograph Awards prize winners. Clockwise from upper left: 1st Prize in the Published category, 1st Prize in the Open category, 1st Prize in the Video category, and the winner of the People's Choice Award.

See pages 15–20 to view all the award winners.

Awards

10 2022 *Microscopy Today* Innovation Awards

Charles Lyman

15 2022 *Microscopy Today* Micrograph Awards

Charles Lyman

Materials Science Applications

21 Analysis of Magmatic Crystal Destruction by Backscattered Electron Imaging

Robert Sturm

Biological Science Applications

24 Bacterial Degradation of Wood by Tunnel Formation: Role of TEM in Understanding the Intricate Architecture of Tunnels and the Cell Wall Degradation Process

Adya P. Singh, Shruti Singh, and Ehsan Bari

Education and Outreach

32 Using Benchtop Scanning Electron Microscopy as a Valuable Imaging Tool in Various Applications

Kayleigh Harvey and Grant Edwards

36 Fourier Ptychography Part II: Phase Retrieval and High-Resolution Image Formation

Lars Loetgering, Tomas Aidukas, Kevin C. Zhou, Felix Wechsler, and Roarke Horstmeyer

40 Ronchigram Simulation and Aberration Correction Training Using Ronchigram.com

Suk Hyun Sung, Noah Schnitzer, William Millsaps, Lena F. Kourkoutis, and Robert Hovden

Pioneers

44 Dr. John Spence: Beyond the Boundaries

Cameron Varano Casasanta

Highlights from *Microscopy and Microanalysis*

50 Frozen n-Tetradecane Investigated by Cryo-Atom Probe Tomography Levels

50 Probing Ferroelectric Behavior in Sub-10 nm Bismuth-Rich Aurivillius Films by Piezoresponse Force Microscopy

51 Correlative Approach for Atom Probe Sample Preparation of Interfaces Using Plasma Focused Ion Beam Without Lift-Out

Departments

- 7 Editorial
- 8 Carmichael's Concise Review
- 46 Industry News
- 48 Product News
- 52 Crossword Puzzle

- 54 NetNotes
- 62 Calendar
- 65 Dear Abbe
- 66 Index of Advertisers

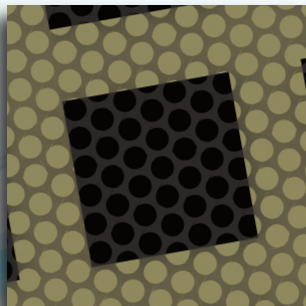
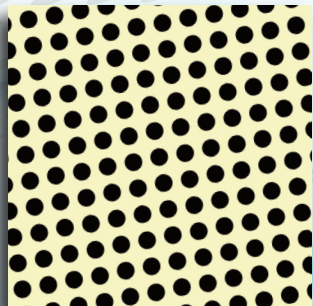
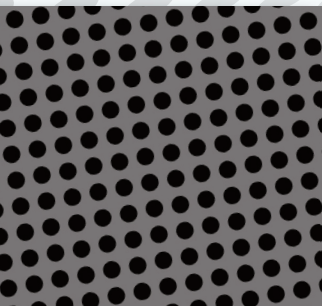
The C-flat™ Family of Holey Carbon, Gold TEM Grids

now by EMS...

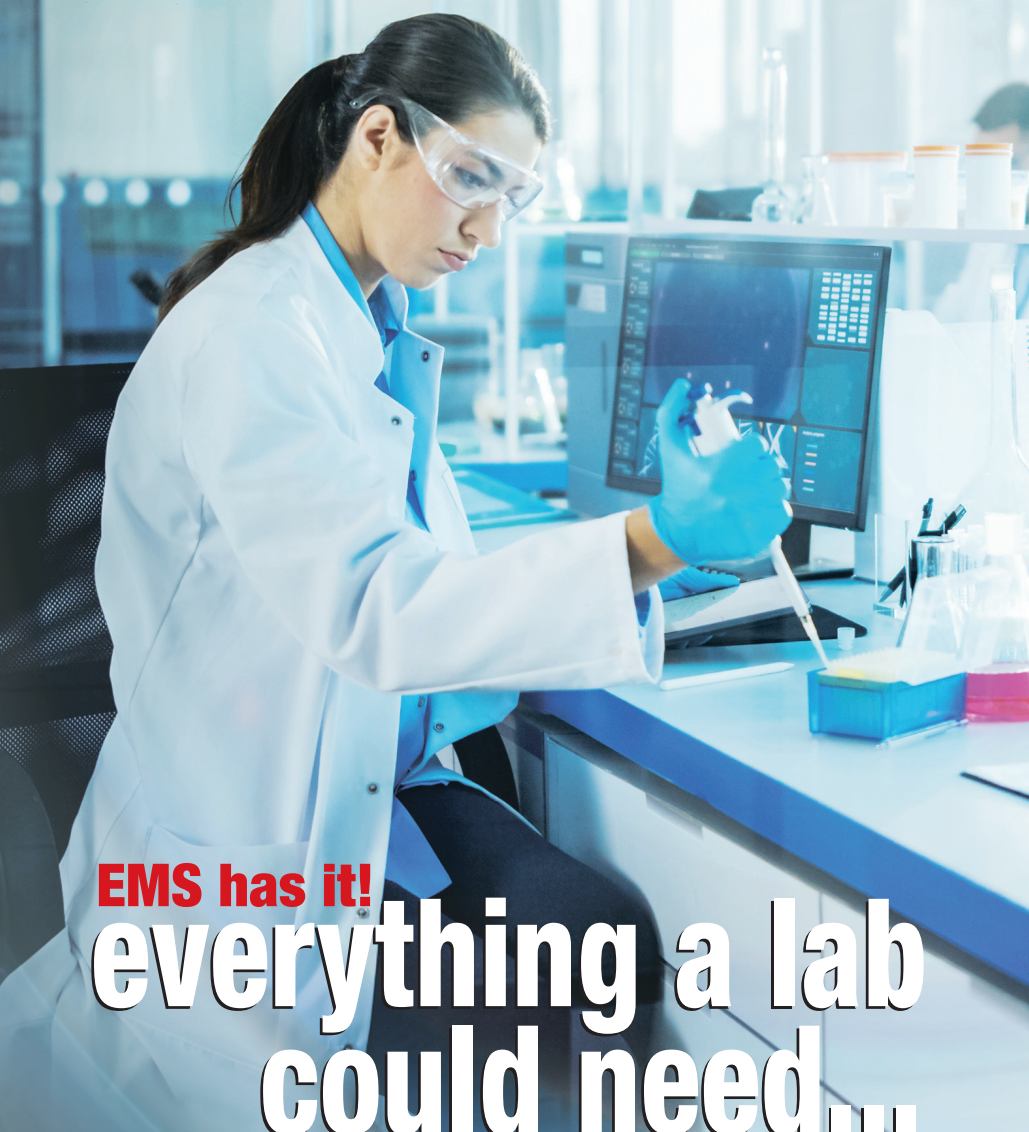
C-flat™ by EMS
in numerous
configurations

Au-flat™ by EMS
for high resolution
imaging

CD-flat™ by EMS
for automated S/TEM
imaging and metrology



You can count on the same advantages, the same high quality, and the same product selection that makes the C-flat Family the premier holey carbon/gold grids for S/TEM and Cryo-TEM.



EMS has it!
**everything a lab
could need...**

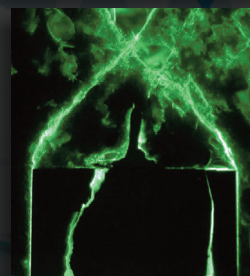
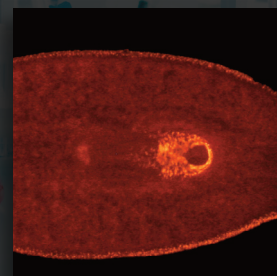
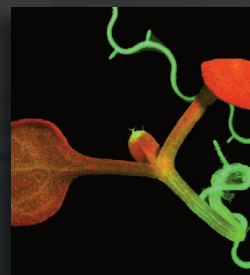
NIGHTSEA
Fluorescence Viewing Systems



For many years, NIGHTSEA has developed practical and economical solutions for viewing and photographing fluorescence in the lab and in the field. *Electron Microscopy Sciences is happy to announce that NIGHTSEA is now part of the EMS Family of Companies.*

APPLICATIONS...

- Pre-screening
- Microdissection
- Failure Analysis
- Genotype Sorting
- Forensics



**Electron
Microscopy
Sciences**

P.O. Box 550 • 1560 Industry Rd. • Hatfield, Pa 19440
Tel: (215) 412-8400 • Fax: (215) 412-8450
email: info@emsdiasum.com • www.emsdiasum.com

https://doi.org/10.1017/S155192252000943 Published online by Cambridge University Press