

# People in Political Science

## Activities

**Barbara L. Brown**, lecturer, department of political science, Southern Illinois University at Carbondale, has been appointed by the Clinton Administration to a four-year term as Public Interest Director of the Federal Home Loan Bank of Chicago.

**William Dixon**, professor, and **Lyn Ragsdale**, professor, department of political science, University of Arizona, were named new co-editors of *Political Research Quarterly* at the 1995 meeting of the Western Political Science Association. Dixon and Ragsdale will commence their five-year term of office in 1996.

**Fred I. Greenstein**, professor of politics, Princeton University, has been elected president of the International Society of Political Psychology. Greenstein became president-elect on July 1 and will assume the full duties of president on July 1, 1996.

**Jorge Heine**, a past president of the Chilean Political Science Association and currently Chile's ambassador to South Africa was elected as an associate member of the International Institute of Strategic Studies (IISS). Heine's most recent book, *The Last Cacique: Leadership and Politics in a Puerto Rican City* was selected by Choice Magazine as an Outstanding Academic Book of 1994.

**Loch K. Johnson**, Regents Professor, department of political science, University of Georgia, has been appointed Special Assistant to the Chairman of the Presidential Commission on Intelligence.

**Abraham F. Lowenthal**, director, Center for International Studies and professor of international relations, University of Southern California, has been named the first president of the Pacific Council on

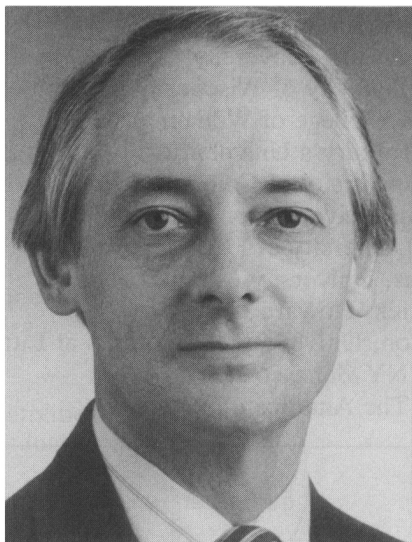
International Policy, a new Los Angeles-based non-partisan organization aimed at engaging thoughtful leaders from throughout the western part of North America in responding more effectively to international trends.

**David Pfeiffer**, professor, department of public management, Suffolk University, has been appointed by Massachusetts Governor William Weld to the Governor's Advisory Commission on Disability Policy.

**Susan J. Pharr**, professor, department of government, Harvard University, has been elected to the Board of Trustees of The Asia Foundation.

**William Richter**, associate provost for international programs, and professor, department of political science, Kansas State University, has been appointed by Senator Robert Dole to the Advisory Committee on the Records of Congress.

**John E. Schwarz**, professor, department of political science, University of Arizona, was elected Chair of the Faculty at Arizona. This is the highest elective office in the



Loch K. Johnson

University's system of faculty self-governance.

**Norman C. Thomas**, Charles Phelps Professor of Political Science, University of Cincinnati, has been named Distinguished Teaching Professor. This title, held only by three of a faculty of 1,400, is the highest honor the University gives in recognition of excellence in teaching.

**Edward Tufte**, professor of political science, statistics, and computer science, and senior critic in graphic design, Yale University, served as the keynote speaker at the dedication of the new Science Center at Connecticut College, where he was awarded an honorary degree of Doctor of Humane Letters. The citation noted that Tufte has "taught us new and remarkable ways to explore, communicate, document, and preserve knowledge" and also "new ways to use words and images to render complex information graphically."

**Thomas J. Volgy**, professor, department of political science, University of Arizona, was appointed executive director of the International Studies Association, effective March 1995. The offices of the association will be housed in the political science department at Arizona for a five year period.

## Administrative Appointments

**Robert Bernstein**, chair, department of political science, Auburn University.

**Linda P. Brady**, director, School of International Affairs, Georgia Institute of Technology.

**David A. Caputo**, president, Hunter College; formerly dean, School of Liberal Arts and professor of political science, Purdue University.

**Amy Gutmann**, Dean of the Faculty, Princeton University.

**John Hane**, interim chair, department of political science, Central Missouri State University.

**Karl F. Johnson**, director, L.P. Cookingham Institute of Public Affairs, University of Missouri-Kansas City.

**Sheldon Kamieniecki**, chair, department of political science, and director, environmental studies program, University of Southern California.

**Richard S. Katz**, chair, department of political science, State University of New York at Buffalo; formerly Johns Hopkins University.

**Suzanne J. Katsikas**, associate professor, department of political science, University of Texas at Arlington.

**Ann Kelleher**, chair, department of political science, Pacific Lutheran University.

**Steven Maynard-Moody**, chair, department of public administration, University of Kansas.

**Robert Montjoy**, director, Economic Development Institute, Auburn University.

**Thomas Ostrowski**, academic vice president and provost, Gannon University.

**Gregory Reinhard**, associate provost, Gannon University.

**Bernard H. Ross**, chair, department of public administration, School of Public Affairs, American University.

**Darrell M. West**, chair, department of political science, Brown University.

### New Appointments

**Javier G. Alcalde**, associate professor, Lee L. Morgan Chair of International Economic Affairs, Bradley University; formerly School of International Affairs, Clark Atlanta University.

**Sheri E. Berman**, assistant professor of politics, Princeton University.

**Marijke Breuning**, assistant professor, department of political science, Northeast Missouri State University; formerly University of Arkansas-Fayetteville.

**Charles Boix**, assistant professor, Ohio State University; formerly Harvard University.

**Daniel P. Carpenter**, assistant professor of politics, Princeton University.

**Ann Marie Clark**, assistant professor of international relations, department of political science, Purdue University.

**Sue E.S. Crawford**, assistant professor, department of political science, Creighton University; formerly Indiana University, Bloomington.

**Phillip Crewson**, assistant professor, department of political science, University of Cincinnati.

**Brian Crisp**, assistant professor, department of political science, University of Arizona; formerly Wake Forest University.

**Nolen M. Ellison**, Victor E. and Caroline E. Schutte/Missouri Professorship in Urban Affairs at the L.P. Cookingham Institute of Public Affairs, University of Missouri-Kansas City.

**Mark Fey**, assistant professor of politics, Princeton University.

**Colin Flint**, assistant professor, School of International Affairs, Georgia Institute of Technology.

**Nancy Fraser**, department of political science, New School for Social Research; formerly Northwestern University.

**Tim Groseclose**, assistant professor, Ohio State University; formerly Carnegie Mellon University.

**Robert Huckfeldt**, professor, department of political science, Indiana University.

**Cal Jillson**, professor and chair, department of political science, Southern Methodist University; formerly University of Colorado, Boulder.

**Thomas Moore**, assistant professor, department of political science, University of Cincinnati.

**James Nolte**, department of political science, New School for Social Research; formerly Vanderbilt University.

**Gwenn Okruhlik**, assistant professor, department of political science, University of Arkansas-Fayetteville; formerly St. Olaf College.

**Rosemary O'Leary**, associate professor, School of Public and Environmental Affairs, Indiana University-Bloomington; formerly Maxwell School of Citizenship and Public Affairs, Syracuse University.

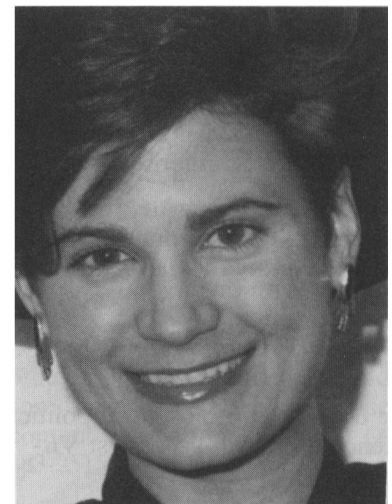
**Margaret M. Pearson**, associate professor, department of government and politics, University of Maryland, College Park.

**Alexander J. Reichl**, assistant professor, department of political science, Loyola University, New Orleans.

**George K. Romoser**, director, Technology, Society and Values Program, University of New Hampshire.

**Virginia Sapiro**, Sophonisba P. Breckinridge Professor of Political Science and Women's Studies, University of Wisconsin-Madison.

**Nancy E. Snow**, assistant professor, department of political science, New England College.



Nancy E. Snow

**Kathryn Stoner-Weiss**, assistant professor of politics and international affairs, department of politics and Woodrow Wilson School, Princeton University.

**Eduardo A. Velásquez**, assistant professor of politics, Washington and Lee University. Velásquez was

## People in Political Science

also recently awarded a "1995 Summer Stipend" by the National Endowment for the Humanities to begin a book-length project titled "The Character of Liberalism."

**Katja Weber**, assistant professor, School of International Affairs, Georgia Institute of Technology.

## Promotions

**Michael W. Bowers**, professor of political science, University of Nevada, Las Vegas.

**Eloise A. Buker**, professor of political science and women's studies, and director, Women's Studies Program, Denison University.

**Susan Collins**, assistant professor, department of political science, Southern Illinois University at Carbondale.

**Philip Davis**, reader in american studies, School of Arts and Humanities, De Montfort University, Leicester, UK. Davies was also recently elected secretary, British Association for American Studies.

**Bonnie Fisher**, associate professor with tenure, department of political science, University of Cincinnati.

**Howard Gillman**, associate professor of political science with tenure, University of Southern California.

**Mark Graber**, associate professor, department of government and politics, University of Maryland, College Park.

**Gerald Gryski**, professor of political science, Auburn University.

**Joe D. Hagan**, professor of political science, University of West Virginia.

**Timothy M. Hagle**, associate professor of political science with tenure, University of Iowa.

**John Hamman**, associate professor, department of political science, Southern Illinois University at Carbondale.

**Russell Hanson**, professor, department of political science, Indiana University.

**Samuel B. Hoff**, associate professor with tenure, department of history and political science, Delaware State University.

**James Hollifield**, alumni associate professor of political science with tenure, Auburn University.

**Joseph A. Ignagni**, professor with tenure, department of political science, University of Texas at Arlington.

**James M. Lindsay**, professor of political science, University of Iowa.

**Clifford M. Lytle**, University Distinguished Professor, department of political science, University of Arizona.

**Steven Maynard-Moody**, professor of public administration, University of Kansas.

**Robert Montjoy**, professor of political science, Auburn University.

**Cary J. Nederman**, associate professor with tenure, department of political science, University of Arizona.

**Barbara S. Romzek**, professor of public administration, University of Kansas.

**Etel Solingen**, associate professor, department of politics and society, University of California, Irvine.

**Alec Stone**, associate professor, department of politics and society, University of California, Irvine.

**Thomas J. Volgy**, professor, department of political science, University of Arizona.

**Cynthia L. Weber**, associate professor, department of political science, Purdue University.

## Retirements

**Wasif Abboushi**, department of political science, University of Cincinnati.

**Stanley Kelly, Jr.**, professor of politics, emeritus, department of politics, Princeton University.

**John P. Lovell**, professor, department of political science, Indiana University.

**Walter F. Murphy**, professor of politics, emeritus, McCormick Professor of Jurisprudence, emeritus, department of politics, Princeton University.

**Thomas O. Schlesinger**, professor, department of political science, Plymouth State College.

## Visiting and Temporary Positions

**Jeanne Nienaber Clarke**, associate professor of political science, University of Arizona, was appointed visiting scholar at the Army Corps of Engineers' Institute for Water Resources in Alexandria, Virginia. Clarke will be spending part of the summer and fall of 1995 in residence at the Institute's offices at the Humphreys' Engineering Center.

**Patrick J. Conge**, visiting assistant professor, department of political science, University of Arkansas-Fayetteville; formerly University of Minnesota.

**Raymond Duch**, associate professor of political science, University of Houston, is visiting the Hoover Institution at Stanford University from August, 1995 to January, 1996.

**James L. Waite**, professor of political science and chair, department of political science and geography, Central Missouri State University, will be a visiting exchange professor at the University of Vaxjo, Sweden, during the 1995-96 academic year.

## Awards

### AAAS Names New Fellows

The American Academy of Arts and Sciences has announced the election of 7 political scientists among its 162 new fellows. Founded in 1780 by John Adams and other leaders of the young republic, the Academy now includes more than 3800 Fellows and Foreign Honorary Members from a broad range of geographical, professional, and cultural backgrounds. New political science fellows include: