


# Government Targeting of Refugees in the Midst of Epidemics


Alex Braithwaite, Michael Frith, Burcu Savun and Faten Ghosn

We investigate how the outbreak of epidemics can affect host governments' targeting of refugees and violation of their physical integrity rights. We argue that governments target repression against refugees for two reasons. First, refugees are easily scapegoated for the arrival of epidemics at a time when governments are looking to shift the blame for their own poor performance. Second, crises provide circumstances for governments to engage in opportunistic repression to further their goal of coercing existing refugees to depart and deterring new refugees from arriving. Drawing upon a global dataset of countries for the years 1996 to 2015, we demonstrate that epidemic outbreaks do indeed increase the likelihood and scale of government repression targeting refugee populations. These effects are especially pronounced in countries with higher proportions of refugees hosted and in less democratic countries. Identification of this potential for government repression of refugees during epidemics is important in light of the grave scale of the ongoing COVID-19 pandemic. Our findings suggest the international community should be vigilant for signs of governments' mistreatment of vulnerable refugee populations to shift focus away from their own poor handling of crises such as the ongoing COVID-19 pandemic and opportunistically advance their goal of reducing the numbers of refugees hosted locally.


---

\*Data replication sets are available in Harvard Dataverse at: <https://doi.org/10.7910/DVNI/9810JX>

Alex Braithwaite  is Professor and Associate Director in the School of Government and Public Policy at the University of Arizona ([abraith@email.arizona.edu](mailto:abraith@email.arizona.edu)). His research focuses on the causes and geography of violent and nonviolent conflict, the causes and consequences of forced migration, and the use of concentration camps in processes of state control. His research is published in *British Journal of Political Science*, *International Studies Quarterly*, *Journal of Conflict Resolution*, *Journal of Peace Research*, and *Journal of Politics*, amongst other journals.

Michael Frith  is a Research Fellow at the Department of Security and Crime Science, University College London ([michael.frith@ucl.ac.uk](mailto:michael.frith@ucl.ac.uk)). His current research focuses on crime and security, in particular, on changes as a consequence of COVID-19 and related policies. His other research has concerned refugees and modelling and understanding their behaviour in and from conflict zones.

Burcu Savun is Associate Professor of Political Science at the University of Pittsburgh, specializing in International Relations ([burcu@pitt.edu](mailto:burcu@pitt.edu)). Her primary research interests include civil wars, terrorism, conflict resolution, forced migration, and refugees. Her research has been published in the *American Journal of Political Science*, *Journal of Politics*, *International Organization*, *International Studies Quarterly*, *Journal of Conflict Resolution*, and *Journal of Peace Research*.

Faten Ghosn  is Distinguished Professor in the School of Government and Public Policy at the University of Arizona and holds the Melody S. Robidoux Foundation Fund professorship ([fghosn@email.arizona.edu](mailto:fghosn@email.arizona.edu)). Her current research focuses on forced migration, obstacles to conflict and cooperation, effectiveness of transitional justice mechanisms in general, as well as in Lebanon. Her research is published in *British Journal of Political Science*, *International Negotiation*, *International Studies Quarterly*, *Journal of Peace Research*, and *Public Choice*, amongst other journals.

This is an updated version of the original article. For details please see the notice at <https://doi.org/10.1017/S1537592721003923>.

490 Perspectives on Politics

doi:10.1017/S1537592721001067

© The Author(s), 2021. Published by Cambridge University Press on behalf of the American Political Science Association. This is an Open Access article, distributed under the terms of the Creative Commons Attribution licence (<https://creativecommons.org/licenses/by/4.0/>), which permits unrestricted re-use, distribution, and reproduction in any medium, provided the original work is properly cited.

The COVID-19 pandemic has placed increasing pressure on governments to take measures to reduce the spread of the virus. As the number of deaths along with the economic and social costs of the pandemic accumulate, governments' handling of the crisis is placed under a spotlight. Governments typically have three options for responding to aggrieved publics: They can do nothing, use policy levers to address emerging pressures and grievances, or they can deploy tools of repression.<sup>1</sup> As they find themselves the target of public concerns and criticisms, the option of doing nothing appears to be off the table for most governments; it is simply too risky, because it likely threatens political survival. The option of addressing the concerns by initiating large-scale public policies would likely be more popular among the public, but the scale of the crisis may make this kind of response too costly or difficult to implement in a timely fashion.

As such, the employment of repressive tactics may be an attractive policy tool for governments to respond to crises promptly (Wood and Wright 2016).<sup>2</sup> However, indiscriminate repression, i.e., broad targeting of the general public, is likely to be unpopular and counterproductive for the goal of political survival (Kydd and Walter 2006, Carlson and Listhaug 2007). Rather, governments have incentives to strategically choose who to target to avoid paying broader electoral costs of repression (Bueno de Mesquita et al. 2003, Klein and Tokdemir 2019). There are strong incentives, therefore, for leaders to deflect criticism by targeting out-groups. In particular, refugee populations can be strategically attractive targets, because they typically hold little political power with which to punish culpable leaders (Savun and Gineste 2019).

Sure enough, there appears to be a number of examples of governments targeting refugee populations during the ongoing COVID-19 crisis. Right-leaning political leaders throughout the world have called for tougher actions to limit the mobility of migrants and refugees to counter the threat of the COVID-19 pandemic, suggesting that these vulnerable populations pose a risk as vectors of the disease.<sup>3</sup> In Hungary, for example, Prime Minister Viktor Orbán stated that migrants and the disease are connected because both “spread with movement.”<sup>4</sup> Similar logics have been expressed in Croatia, Greece, Italy, and the United States. In each instance, migrant and refugee populations are blamed for the (potential) arrival of the virus on local shores.<sup>5</sup> Some governments have gone beyond scapegoating refugees for the spread of the COVID-19 and resorted to violation of their rights within their borders. For example, Malaysian authorities arrested over 2,000 Rohingya refugees and put them in detention centers.<sup>6</sup> Similarly, in Lebanon, twenty-one municipalities introduced severe restrictions on the movement of Syrian refugees (but not Lebanese residents) as part of their efforts to combat the spread of COVID-19.<sup>7</sup>

In this article, we examine whether the outbreak of epidemics is associated with an increase in the violation of

physical integrity of refugees by host governments.<sup>8</sup> To do so, we outline a logic for government targeting of refugees during epidemics. We assume that epidemics place strains on economies and societies, potentially resulting in hardship for broad communities, which in turn leads to debate regarding the attribution of blame for ineffective management of the situation. Public attitudes towards refugee populations, and out-groups in general, are typically negative during economic and security crises (Davis and Silver 2004; Isaksen 2019; Savun and Gineste 2019). We expect a similar activation of in-group/out-group dynamics during periods of health crisis.

We also assume that governments prioritize their political survival and take actions in pursuit of this priority (Bueno de Mesquita et al. 2003). In response to the emergence of public concerns, governments have incentives to identify scapegoats and target them. Refugee populations are well suited as targets of government repression under these conditions. First, refugees are politically powerless and unable to impose electoral costs on governments.<sup>9</sup> Second, once in-group/out-group anger is activated, the public is increasingly intolerant and potentially even supportive of government targeting of out-groups (Davis and Silver 2004; Stephan, Ybarra, and Bachman 1999). Third, the targeting of refugees during crises can be thought of as opportunistic repression (Grasse et al. 2020) insofar as it might help governments achieve a pre-existing policy goal of encouraging refugee populations to return home and deter new refugees from attempting to enter the country in the future.

We also contend that while all refugee hosting countries may have some incentive to target repression against refugee populations in line with our general logic, there are likely sources of variation in their actual deployment of repression. Specifically, we develop three conditional logics in this paper. First, we suggest that the targeting of refugees depends, in part, upon the availability of suitable targets within the country. Thus, the likelihood should be conditioned by the relative size of the locally hosted refugee population. Second, we suggest that while health epidemics are often unpredictable, their impacts are influenced by political and institutional factors (Kahn 2005). Third, we suggest that democracies have incentives to provide public goods and, therefore, like more capable states, in general, will be better placed to manage the effects associated with the occurrence of epidemics, leaving more autocratic and less capable states more likely to resort to repression of refugees at such times.

In order to test the hypotheses derived from this logic, we design a series of multivariate statistical tests drawing upon evidence from the recent historical record of epidemics and government targeting of refugees between 1996 and 2015. These analyses do not include data on COVID-19. However, they cover a broad range of epidemics experienced across all regions over a number of decades. Accordingly, we believe that they provide

meaningful evidence to bring to bear to better understand the possible course of responses to the COVID-19 pandemic. Our results appear to support the logic of scapegoating and opportunistic repression of refugees in response to epidemics. Specifically, the analyses demonstrate that governments increase their violent targeting of refugee populations when epidemics are experienced locally. Moreover, we demonstrate that this effect is conditioned by the size of the refugee population hosted locally and the level of autocratic governance of the country.

We make two important contributions. First, we bring together literatures on health crises, forced migration, and government repression. We highlight one of the political consequences of epidemics by showing how refugees may be a target of violent repression by governments in their efforts to deflect blame for their poor handling of epidemics and to opportunistically deter refugees from staying in the country. Second, we contribute to understandings of the approaches that governments are willing to follow in order to ensure their political survival. Scapegoating of outgroups is not just rhetorical. Rather, governments seem willing to take the opportunity to use crises such as epidemics to target vulnerable populations of refugees. This reinforces the idea that refugees' suffering does not end once they leave their countries of origin.

### Repression as a Response to Epidemics

As Hafner-Burton, Helfer, and Fariss aptly note, "human rights are often the first casualties of crises" (2011, 673). The literature has long established that repression is a common tool that leaders employ when their survival in office is threatened.<sup>10</sup> Economic, social, and political shocks to the status quo are common such threats to which leaders might respond with repression. It is argued that this is because shocks to the political equilibrium often generate the potential for dissent (Poe and Tate 2004; Davenport 2007). Following this general logic, scholars have shown that governments deploy repression in response to shocks resulting from demographic shifts (Nordas and Davenport 2013), economic sanctions (Wood 2008), civil war in the neighborhood (Danneman and Ritter 2014), terrorism (Conrad et al. 2017), increasing refugee inflows (Wright and Moorthy 2018), and natural disasters (Wood and Wright 2016).

In the case of natural disasters, as an example, the logic would appear to be as follows. When natural disasters strike, at least two important effects are observed. Natural disasters result in hardship within local populations (Kahn 2005). This sense of hardship can serve to increase grievances within local populations. This can, in turn, result in responsible governments experiencing a decline in their real or perceived level of control over the state, which might threaten the survival of the incumbent in office (Quiroz Flores and Smith 2013). Both of these conditions seed potential instability in the country, which often

results in governments increasing their reliance upon repression (Wood and Wright 2016).

We argue that epidemics, i.e., widespread occurrence of an infectious disease in a population at a particular time, also represent shocks to the status quo that can challenge governments and even threaten leaders' political survival. This is because they hold the potential to create or exacerbate grievances in the societies experiencing them. Epidemics can provoke public concerns regarding the potential to be exposed to the pathogen. In the case of the emergence of COVID-19, it soon became clear that not only was the disease spreading, but it also seemed to be "infecting societies with a sense of insecurity, fear and fragmentation" (Erlanger 2020). This places attention on what governments are doing in response as a means of tackling the emerging threat and securing the well-being of their citizens. Thus, dissent may emerge as epidemics expose government deficiencies and inadequate responses, while also highlighting and exacerbating existing structural inequalities in society.<sup>11</sup> For example, protests have been observed in Mexico demanding greater government investment in personal protective equipment for healthcare workers and in Iran in response to the detrimental effect of perceived government corruption stalling an adequate response to the crisis (Kishi 2020).

While governments face strong pressure to respond to grievances associated with health crises, their opportunity to engage in repression simultaneously may increase in times of crises. This is mainly due to change in the political environment that dampens the cost of repression for the leaders. One common policy tool that leaders use to increase their flexibility of action during crises is declaration of state of emergency, which provides leaders the leverage to adopt invasive activities infringing on citizens' civil liberties. For example, during the COVID-19 pandemic, many governments have responded to the pandemic by declaring states of emergency and expanding their central authority (Stasavage 2020).<sup>12</sup> Executive power-maximizing strategies of this kind have been observed in many places, including Hungary, the UK, Israel, and elsewhere during this crisis.<sup>13</sup> This practice tracks closely with the ways that governments of all stripes move into power-maximization model when responding to disaster situations (Bjørnskov and Voigt 2020; Wood and Wright 2016).

As part of this power-maximization strategy, we have observed a general increase in repression designed to dampen dissent (Kishi 2020) and a perceptible weakening of global criticism of repressive interventions in the name of quelling a threat to global public health (Grasse et al. 2020). Thus, many states have accelerated the militarization of their policing practices as a response to the pandemic.<sup>14</sup>

### Refugees as Targets of Repression during Health Crises

Having established that governments might respond to public health crises by employing repression, it is worth

considering why they might target refugees with this repression. Refugees are often subject to the basest instincts of extremist political figures. The leader of Hungary, Victor Orbán, accelerated his consolidation of power in 2020 by linking migrants and the spread of coronavirus in justifying the expulsion of multiple Iranian students from the country. In Italy, right-wing politician Matteo Salvini erroneously blamed refugees and migrant workers for the arrival of COVID-19 in the country in spring 2020. Prominent figures in France, the United States, and Croatia have each also taken the opportunity to point the finger in the direction of resident refugee and migrant populations in accounting for escalating local levels of the virus (Zargar 2020).

Why do domestic leaders scapegoat in this manner and are these claims precursors to violence targeted against refugee populations? We assume that the point of departure in motivating the scapegoating of refugees is the difficulty societies experience in coming to terms with the “sudden and violent visitations of mass epidemics” (Evans 1988, 124). The arrival of an epidemic locally depends upon the nature of the actions taken by the state. Government efforts to prevent the arrival of an epidemic, contain it, or mitigate against its spread within the community will be subject to evaluation by observers, including the electorate. This process of observation and evaluation can result in rather divergent interpretations locally of where to attribute blame for the disease’s arrival and spread.

Under uncertainty regarding public responses, governments have incentives to assign blame for emerging crises. Although state of emergency laws may allow leaders a certain degree of latitude in curtailing civil and political liberties, repression targeting general domestic audiences might prove counterproductive (Kydd and Walter 2006) and actually limit relief efforts in response to the epidemic (Gómez and Harris 2016). Therefore, governments strategically choose who to target to avoid upsetting the electorate (Buono de Mesquita et al. 2003, Klein and Tokdemir 2019).<sup>15</sup> Recent research suggests that leaders assign blame for crises by using violence against out-groups in the society to deflect criticism (Tir and Jasinski 2008). The refugee population can be considered one type of out-group in host states. In the context of security crises, Savun and Gineste (2019) argue that refugees serve as ready-made targets for blame and scapegoating. They find that host states are likely to violate physical integrity rights of refugees in the wake of terrorist attacks.

Underlying these trends in the targeting of refugees are baseline negative attitudes that the public hold towards these vulnerable populations. Prominent research in political psychology, sociology, and political science have widely demonstrated that public intolerance of out-groups increases during the times of crises, leading to a spike in xenophobia and prejudice (Stephan, Ybarra, and Bachman 1999; Huddy et al. 2005; Kam and Kinder 2007). Historical cases demonstrate how this dynamic had played out during prior health crises (Dionne and Turkmen 2020).

When cholera struck Europe in the nineteenth century it “scored the European social consciousness, exacerbated contemporary tensions, and intensified the impact of current social problems” (McGrew 1965, 3). This focused public wrath on outcast groups who were blamed for the invisible enemy. Similarly, in the United States, in the early twentieth century, recent Jewish immigrants were the targets of repression to combat the threat of tuberculosis and Italian immigrants were blamed for the polio epidemics of 1907 and 1916 (Cohn 2012). More recently, Haitians were blamed for the AIDS epidemic (Paik 2006).<sup>16</sup> In 1991, after a military coup in Haiti, hundreds of Haitian refugees were on boats heading to the United States to seek asylum when the US Coast Guard picked them up, tested them for HIV, and took positive cases and family to refugee camps.<sup>17</sup> The U.S. Government detained 277 HIV positive and family of HIV positive Haitian refugees in a U.S. naval base in Guantanamo for twenty months.<sup>18</sup> They were detained in squalid and cramped barracks, restricted from seeing their test results, and denied access to any suitable treatment. More recently, during the SARS outbreak in 2003 initial stigma and animosity was targeted towards refugees as potential vectors of the disease (Person et al. 2004). In the UK for instance, some right-wing politicians and media outlets used the SARS in campaigns against immigration and refugees (Wallis and Nerlich 2005).

Agents of many governments have also been observed seeking to harm refugee populations during the course of the ongoing COVID-19 crisis. Amnesty International has documented numerous cases across sixty countries of law enforcement agencies using the opportunity afforded by the ongoing pandemic to commit human rights abuses under the guise of protecting health.<sup>19</sup> For example, in Bangladesh in late March 2020, despite having only one confirmed case of COVID-19 in the Cox’s Bazaar District at that time and no confirmed cases among refugees, the government suspended the majority of the relief work in the Rohingya refugee camp and encircled the camp with barbed wire to confine the refugees.<sup>20</sup> Also in the early stages of the outbreak, official Greek security forces and unidentified armed men intensified their crackdown on the borders between Greece and Turkey, detaining, sexually assaulting, and robbing asylum seekers and migrants before sending them back to Turkey.<sup>21</sup>

Common to each of these cases is the tendency to view newly arriving populations as posing biological risks because they sometimes carried with them novel pathogens (Shah 2020). Perhaps most notoriously, from the late fifteenth century, Europeans introduced smallpox and measles viruses (that they had coped with for centuries) into Native American populations (Shah 2020). This apparent activation of in-group/out-group biases and xenophobia during health crises is supported by evidence that in areas subject to more pathogens, there are greater levels of ethnocentrism (Fincher and Thornhill 2012) and that people who feel



more threatened by infectious diseases express more xenophobic attitudes than do people without such feelings of threat (Dutta and Rao 2015, Shah 2020).

These discriminatory attitudes and repressive behaviors fly in the face of lack of scientific evidence showing refugees and migrants increase the exposure of host countries to infectious diseases.<sup>22</sup> The virus actually appears to have spread first and foremost through the interconnected societies of the West and the networks of the international community's most mobile members: tourists and traveling business personnel.<sup>23</sup> Nonetheless, the intentional scapegoating of vulnerable migrant populations hints at governments attempting to shift blame for the emerging crisis. This is, in too many respects, par for the course for refugee populations. After all, refugees are often accused of serving as vectors for violence and insecurity within host communities (Böhmelt, Bove, and Gleditsch 2019; Braithwaite et al. 2019; Fisk 2018), even though they are more commonly the targets of violence than they are its perpetrators (Onoma 2013; Savun and Gineste 2019).

Nonetheless, refugees are attractive targets of repression for a number of reasons. They are newly arrived outsiders who can credibly (in the eyes of the public) be blamed for the arrival of a novel infectious disease. That is, emerging pathogens are typically characterized by the lack of medical knowledge, which in turn allows leaders to redistribute blame according to existing patterns of discrimination and othering (Dionne and Turkmen 2020). In addition, refugees also do not have electoral power to punish leaders for falsely blaming them for crises and violating their physical integrity rights (Whitaker and Giersch 2015; Savun and Gineste 2019). Accordingly, leaders have more leeway to target refugees and need not worry as much about punishment by the electorate for targeting refugees because the public's feeling of insecurity in the times of crisis increases their prejudice and negative perceptions of out-groups, such as immigrants and refugees (Stephan, Ybarra, and Bachman 1999; Huddy et al. 2005; Kam and Kinder 2007).

In addition to electoral incentives and public tolerance of mistreatment of out-groups, governments may have another reason to engage in repression of refugees in times of crises. Approximately 85% of refugees globally are hosted in low-income/developing countries,<sup>24</sup> with 73% hosted in countries neighboring their country of origin (UNHCR 2019). These hosts often face economic difficulties, perceptions of threats to their security, and social and cultural tensions between hosted and pre-existing resident populations (Chu 2020; Ghosn, Braithwaite, and Chu 2019; Akar and Erdogdu 2019); challenges which can have long-lasting impacts on their ability to govern (Landau 2008). As a consequence, host governments often prefer to treat refugees as temporary guests, while encouraging them to leave or seek resettlement to third countries (Hammerstad 2000; Salehyan 2018).

Given these negative circumstances of refugee hosting, governments have incentives to look to encourage existing

refugee populations to leave and discourage future refugees from attempting to enter the country. One way of achieving these outcomes may be for governments to make the lives of refugees in the country more difficult by reducing protections and guarantees for their safety. However, almost all states are party to the 1951 UN Convention on Refugees and its 1967 protocol that require all signatories to provide refugees fundamental rights, respect their physical integrity rights, and adhere to norms of *non-refoulement*. Therefore, mistreatment of refugees may, under normal circumstances, invite international criticism and be considered violation of international law. However, declarations of a state of emergency during health crises may provide governments a window of opportunity to mistreat refugees to facilitate their return or make it a less desirable destination for future refugees (Hafner-Burton, Helfer, and Fariss 2011; Grasse et al. 2020). As such, repression may not be a direct response to any real threat posed by refugees; rather, it may be what Grasse et al. (2020) call "opportunistic" repression.

Hypothesis 1: The experience of epidemics is associated with increases in governments' violation of physical integrity of refugees.

There are a number of contextual factors that may amplify the positive effect of epidemics on repression of refugees. Here we focus on two factors that should increase the incentives of governments to target refugees in times of crises: 1) larger refugee populations hosted locally and 2) more autocratic political regimes. First, we argue that host states with larger refugee populations would have greater opportunities and incentives to target refugees. In the first instance, larger refugee populations represent more easily identified, visible, and numerous targets for government violations of physical integrity rights. Moreover, large refugee population means more strain on the economic resources, infrastructure, and social services in host countries (Chambers 1986), increasing tension among the local populace and pressure on governments to address grievances (Ghosn and Braithwaite 2018). Relatedly, the concerns that local citizens hold about insecurity related to hosting refugee populations are especially acute in situations in which locals are hosting large refugee populations (Böhmelt, Bove, and Gleditsch 2019; Braithwaite et al. 2019; Whitaker 2003). These economic, social, and security concerns and pressures on states with large refugee populations further increase during health crises, which bring about additional strains and challenges to which governments will feel compelled to respond.

Hypothesis 2: The effect of epidemics on host government repression of refugees increases as the size of the hosted refugee population increases.

We also contend that the regime type of host states also matters. We expect the positive relationship between the outbreak of epidemics and violence against refugees to be

stronger in autocracies.<sup>25</sup> First, the size of the winning coalition—the part of the selectorate whose support is necessary to keep a leader in office—determines whether a leader invests in public or private goods (Bueno de Mesquita et al. 2003). With smaller winning coalitions, autocratic leaders rely less on public goods, such as provision of health care, and more on private goods to keep their supporters content and maintain their support. Therefore, autocracies may be less prepared to manage the outbreak of pandemics with limited sources dedicated to the health care sector, which in turn would create stronger incentives to deflect blame and engage in scapegoating. As the size of the winning coalition increases, leaders are likely to invest their efforts in the provision of public goods that benefit all citizens in the society.

In addition, democracies tend to have better resources and infrastructure to manage the outbreak of pandemics. Oppenheim et al. (2019) developed an Epidemic Preparedness Index, which includes five sub-indices: economic resources, public health communication, infrastructure, public health systems, and institutional capacity. Looking at the response of 188 countries in 2009 to the H1N1 influenza pandemic, they find that the most prepared countries were located in Europe and North America, while the least prepared countries were concentrated in Central and West Africa, as well as Southeast Asia. Therefore, democratic leaders have more incentives, as well as better capabilities, to provide health care for their citizens. This should directly enhance their political survival and, thus, undermine their incentives to attack refugees to deflect blame for epidemic crises. Accordingly, we hypothesize that:

Hypothesis 3: The positive association between the number of epidemics and violence against refugees is particularly pronounced in autocracies.

## Research Design

To test the validity of our hypotheses, we build a global cross-national dataset for the period 1996 to 2015. For our dependent variable, we draw upon the government repression and violence against refugees index [GVI] variable from the Political and Societal Violence by and against Refugees (POSVAR) dataset (Gineste and Savun 2019). The POSVAR dataset defines anti-refugee government repression as any violation of the physical integrity of refugees by the government of the country in which they reside or are hosted. Empirically, the GVI measures any act through which state agents, including military personnel, police, other security officers, seek to harm refugees or damage/confiscate their property. Derived from a variety of sources, including official reports, surveys, and an open news search, the GVI is an ordinal measure of the annual scale of *government perpetrated anti-refugee violence*<sup>26</sup> and includes values of 0 (no evidence of anti-refugee violence or repression), 1 (isolated reports of anti-refugee violence or

repression, or between one and twenty-five victims), 2 (anti-refugee violence is prevalent, or between twenty-five and ninety-nine victims) and 3 (systematic anti-refugee violence or repression, or at least 100 total victims). As the highest level (3) is only observed in six country-years, we combined it with violence levels of category 2. Accordingly, we deploy an ordinal scale that ranges from 0 to 2.<sup>27</sup>

Our primary explanatory variable is the presence of *epidemic outbreaks*. This is derived from the Emergency Events Database (EM-DAT), which is maintained by the Centre for Research on the Epidemiology of Disasters (CRED). EM-DAT contains information on more than 21,000 natural and technological disasters globally since 1900. Sources of information include UN agencies, NGOs, insurance companies, research institutes, and press agencies. To qualify for inclusion in the database, disasters must meet at least one of the following criteria: 10+ human deaths, 100+ individuals affected, the declaration of a state of emergency, *or* a call for international assistance (Guha-Sapir 2020). Epidemics are defined as involving either an unusual increase in the number of cases of an infectious disease already native to the location or the occurrence of an infection previously absent from that area. Epidemics therefore do not include diseases that are not infectious or those that are endemic to a given country. Since the appropriate lag time between the outbreak of epidemics and repression against refugees is not clear, in our primary models we consider epidemics occurring in the year prior to the focal year.<sup>28</sup>

To limit concerns about confounding, we include a series of control variables to account for other factors likely to affect government targeting of refugees.<sup>29</sup> For this, we primarily follow the main model specification of Savun and Gineste (2019). We include seven additional variables, all lagged one year behind our dependent variable. The first variable captures the proportion of the population in the country of interest that are refugees. Large refugee populations (relative to the size of the native citizenry) should increase the incentives of government to target refugees by imposing more constraints and pressure on the available resources to address epidemic related grievances (Wright and Moorthy 2018). We use the size of refugee population as a percentage of the host country's total population. This variable also serves as a parameter in the interaction term used to test HYPOTHESIS 2.

Our second variable measures the extent of ties between this hosted refugee population and politically excluded groups in the host state. It is possible that the ethnicity of locally hosted refugee populations might influence whether or not host governments will choose to violate their physical integrity rights (Savun and Gineste 2019). Rüggeger (2019) argues that refugees may be perceived as a greater threat if their arrival and presence is likely to change the ethnic balance of the host country. If a refugee group has ethnic ties to discriminated groups in host countries,

members of the majority ethnic group in the country may be concerned about the potential strengthening of ethnic minorities and hence may have fewer objections regarding repression of the refugee population by their government. Similar to Savun and Gineste (2019), we use the Ethnicity of Refugees and the Transborder Ethnic Kin datasets to determine the prevailing ethnicity of major refugee groups and match them with excluded political groups in host states (Rüegger and Bohnet 2018, Vogt et al., 2015). Our refugee ties with excluded groups variable is a measure of the logged size of the locally hosted refugee populations that share ethnic ties with at least one of the host country's discriminated ethnic minority groups.<sup>30</sup>

Third, we deem it important to control for the baseline level of government respect for human rights in the host country in order to capture underlying variation in the proclivity of governments to deploy tools of repression as part of their strategies of control of the domestic population. Presumably, states that violate the physical integrity of their own citizens may have fewer qualms about also repressing the refugee groups they host. Importantly, though, hosts with higher prior reliance on repression against their domestic populations might also not need to resort to the targeting of refugees to influence the preferences of their domestic audiences, as they can presumably target the citizenry directly. In order to control for these potentially varied influences of the baseline level of repression in which the host government engages, we draw upon the Political Terror Scale [PTS], which is based on Amnesty International's annual human rights reports.<sup>31</sup> The PTS measures the level of violations of basic human rights, such as torture and violence, by agents of the state (Gibney et al. 2020). This variable ranges from 1 to 5, with increasing values reflecting greater levels of and more widespread political terror.<sup>32</sup>

Fourth, we include here a variable characterizing the regime type of the country. We include this alongside the indicator of baseline human rights performance, because we want to additionally control for the extent of institutional constraints on the government, including the extent to which governments can be held accountable for their performance. This is an important control measure given that our logic of government reliance on repression builds upon an assumption that governments desire political survival. Our operationalized variable is perhaps most appropriately thought of as a measure of democracy, ranging from 0 (closed autocracy) to 9 (liberal democracy). These data are drawn from the Varieties of Democracy V-Dem dataset (Coppedge et al. 2016). This variable also serves as a parameter in the interaction term used to test hypothesis 3.

State strength or capacity may also influence how effectively governments are able to respond to epidemics. The availability of resources that can be mobilized to manage any emerging crisis ought to be expected to condition the government's incentives to scapegoat and target refugees. We measure state capacity using the International

Country Risk Guide's (ICRG) bureaucratic quality measure of a country's bureaucratic strength and resilience to shocks and autonomy from political pressure. Economic capacity is also important for host governments' ability to respond to epidemics adequately. We measure economic capacity with the logged GDP per capita of a country using the World Bank's World Development Indicators.

Lastly, we control for the presence of civil conflict in host states, which may have an influence on the overall level of repression in the state and popular attitudes towards refugees. We use the UCDP/PRIO Armed Conflict Dataset to measure the presence of an ongoing intrastate conflict that has reached twenty-five battle deaths in a given year (Gleditsch et al. 2002; Pettersson and Öberg 2020). Table 1 presents descriptive statistics for each of the variables included in our main models.<sup>33</sup>

## Results

To begin investigating our first hypothesis, we start with a simple cross-tabulation of epidemic outbreaks and government repression of refugees across our sample of country-years. Table 2 shows a significant increase in the likelihood of repression against refugees in years with epidemics. We observe some repression in 18% of country-years during which there is an epidemic, compared to just 7% of years in which there is no epidemic. Moreover, the likelihood of moderate to high levels of repression of refugees is three times higher in the presence of an epidemic than in their absence. This represents *prima facie* support for our first hypothesis.

We subsequently conduct multivariate analyses to examine whether these initial indications of a positive relationship between epidemic outbreaks and anti-refugee repression are upheld while controlling for potentially confounding factors. Given the ordinal nature of our dependent variable, we first estimate an ordered logistic regression model [OLR] with standard errors clustered by countries. In our second model, we then present an OLR including a lagged version of the dependent variable as an additional right-hand side variable. We do so in order to control for the temporal dependence between levels of government repression of refugees. These pooled models examine both variation within and across country panels. We also conduct a third model with a fixed effects (FE) specification. The advantage of this approach is that it provides a stricter test of our hypothesis by control for unit-level heterogeneity and focusing upon within-country variation.<sup>34</sup> Table 3 presents these three main models.

Between our three main models, we find strong support for our first hypothesis. Across all models, the presence of epidemics returns a positive and statistically significant parameter estimate.<sup>35</sup> This effect also appears substantively meaningful. For example, in our OLR model, the occurrence of an epidemic in the previous year is associated

**Table 1**  
Descriptive statistics for main model parameters

	Mean	St. Dev.	Min	Max
Level of anti-refugee repression	0.12	0.39	0	2
Presence of epidemics	0.18	0.39	0	1
Number of epidemics	0.30	0.80	0	11
Logged number of epidemic-related deaths	0.62	1.59	0	8.62
Logged number affected by epidemic	1.26	2.91	0	13.76
Refugee population share (%)	0.35	0.99	0	19.06
Refugee ties with excluded group	0.52	2.30	0	14.22
Political terror	2.65	1.12	1	5
Democracy	4.82	2.93	0	9
State strength	2.17	1.14	0	4
Logged GDP per capita	8.38	1.51	4.81	11.88
Civil conflict	0.14	0.35	0	1

**Table 2**  
Probability of anti-refugee government repression by presence of epidemics

	Level of Anti-Refugee Government Repression		
	0 (None)	1(Low)	2 and 3 (High)
<b>Presence of epidemics*</b>			
None	93%	5%	2%
At-least one	82%	12%	6%

\* Chi2(2) = 92.03, p < 0.01. N = 3640

**Table 3**  
Ordered logistic regression of government repression of refugees

	(1)	(2)	(3)
Presence of epidemics	0.55** (0.20)	0.47** (0.17)	0.58* (0.25)
Refugee population share (%)	0.16* (0.07)	0.07 (0.07)	0.05 (0.07)
Refugee ties with excluded group	0.05† (0.03)	0.04* (0.02)	0.01 (0.04)
Political terror	0.44** (0.13)	0.32** (0.11)	0.14 (0.14)
Democracy	-0.02 (0.06)	-0.03 (0.05)	-0.10 (0.10)
State strength	0.18 (0.16)	0.17 (0.13)	-0.32 (0.22)
GDP per capita	-0.18† (0.11)	-0.19* (0.09)	0.26 (0.63)
Civil conflict	0.19 (0.29)	0.08 (0.25)	-0.01 (0.30)
Lagged repression against refugees		1.25** (0.14)	
Fixed Effects?	No	No	Yes
N	1990	1990	1572

Note: † p < 0.1; \* p < 0.05; \*\* p < 0.01 level. All tests are two-tailed.



**Table 4**  
**Robustness tests of anti-refugee government repression**

	(4)	(5)	(6)	(7)
<b>Previous 3 years</b>				
Presence of epidemics	0.56** (0.18)			
<b>Previous year</b>				
Number of epidemics		0.21* (0.10)		
Logged number of epidemic-related deaths			0.09† (0.05)	
Logged number affected by epidemic				0.05* (0.02)
Refugee population share (%)	0.17* (0.07)	0.17* (0.07)	0.16* (0.07)	0.17* (0.07)
Refugee ties with excluded group	0.05† (0.02)	0.04 (0.03)	0.05† (0.03)	0.05† (0.03)
Political terror	0.43** (0.13)	0.43** (0.13)	0.45** (0.13)	0.44** (0.13)
Democracy	-0.02 (0.06)	-0.02 (0.06)	-0.01 (0.06)	-0.02 (0.06)
State strength	0.19 (0.16)	0.18 (0.16)	0.17 (0.17)	0.18 (0.16)
GDP per capita	-0.17 (0.11)	-0.20† (0.11)	-0.20 (0.12)	-0.20† (0.11)
Civil conflict	0.20 (0.28)	0.20 (0.28)	0.20 (0.29)	0.21 (0.28)

Note: N = 1990; † p < 0.1; \* p < 0.05; \*\* p < 0.01 level. All tests are two-tailed.

with a 73% increase in the odds of a greater level of repression of refugees in the current year.

With respect to the control variables and the first two models, we find that political terror is the only other consistent statistically significant predictor of government violation of physical integrity rights of refugees. Government repression of refugees is more likely in countries with lower respect for physical integrity rights. In the first model, we also find that refugee population share is a significant predictor of elevated levels of repression against refugees. Two other variables in model 1, refugee ties with excluded group and GDP per capita, approach conventional standards of statistical significance. However, both of these variables are statistically significant in model 2. In model 2, the lagged version of the dependent variable is also a statistically significant predictor of elevated levels of repression against refugees in the present year. When we move to the FE specification (model 3), however, none of our control variables achieve statistical significance. This should be interpreted with caution due to the more limited power of these models given the focus upon within-panel variation.

We also run a battery of additional tests to determine the robustness of evidence in support of our first test hypotheses by replacing our main explanatory variable. We expand the window of time over which we consider the occurrence of epidemic outbreaks to cover the previous

three years. We also consider the scale of epidemic outbreaks, which we operationalize in three ways. First, we include a count of the number of epidemic outbreaks experienced in the country in the previous year. The data for this variable ranges from 0 to 11 and we truncate it at five or more.<sup>36</sup> Second, we also include variables measuring the logged estimated number of deaths, and the logged estimated number affected in terms of requiring immediate assistance, by epidemic outbreaks in the country in the previous year. The underlying data for these variables range from 0 to 5,539 deaths and from 0 to 942,153 affected in a country-year.<sup>37</sup>

As shown in the table 4, our finding holds in three of the four models (4, 5, and 7) with different operationalizations of the main explanatory variable. That is, the presence of epidemics in the previous three years, the count of the number of epidemics in the previous year, and the number of people affected by epidemics are all associated with increasing levels of government repression against refugees. The only exception here is observed in model 6 where the estimated number of deaths related to epidemics only approaches conventional standards of statistical significance (p = .07). One could anticipate that more deaths from epidemics would exacerbate the government's use of repression against refugees. However, it might be that government opportunism actually gives them an incentive

**Table 5**  
**The effects of epidemics on the level of anti-refugee government conditional on refugee population size and regime type**

	(8)	(9)
Presence of epidemics	0.29 (0.22)	1.03** (0.36)
Presence of epidemics * Refugee Population Share (%)	0.48** (0.15)	—
Presence of epidemics * Democracy	—	-0.13† (0.07)
Refugee population share (%)	0.08 (0.05)	0.17* (0.07)
Refugee ties with excluded group	0.04 (0.03)	0.04† (0.03)
Political terror	0.45** (0.13)	0.44** (0.13)
Democracy	-0.02 (0.06)	0.01 (0.06)
State strength	0.19 (0.16)	0.18 (0.16)
GDP per capita	-0.17 (0.11)	-0.19† (0.11)
Civil conflict	0.17 (0.29)	0.19 (0.29)

Note: N = 1990; † p < 0.1; \* p < 0.05; \*\* p < 0.01 level. All tests are two-tailed

to target refugees at the first sign of a crisis emerging and, thus, not wait for casualties to accumulate. This post-hoc explanation would be consistent with the logic of opportunistic repression and our FE findings earlier.

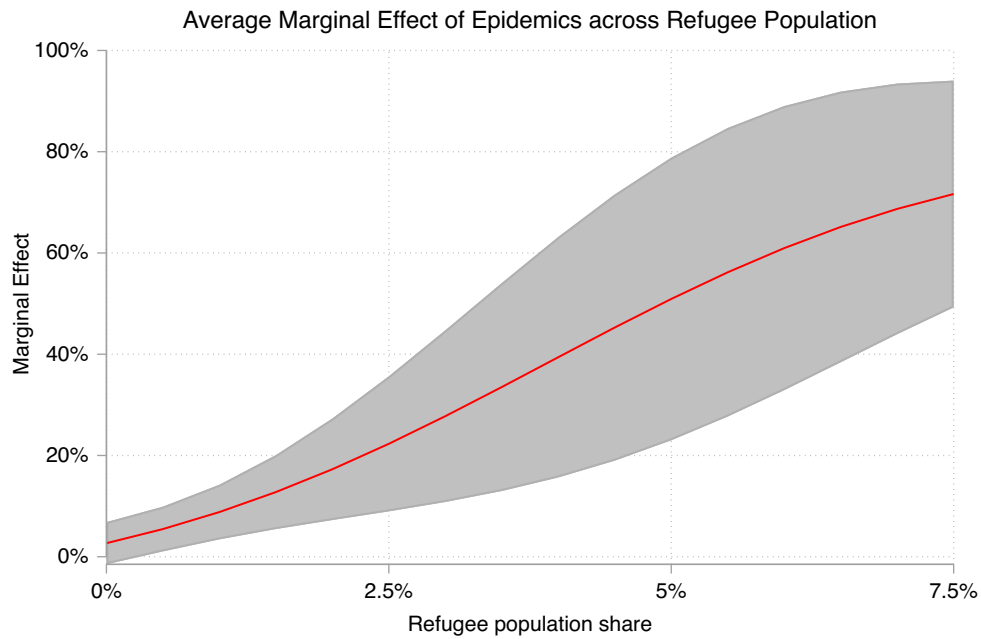
Having established consistent evidence in support of HYPOTHESIS 1, we next test the empirical validity of HYPOTHESIS 2, which suggests that the effect of epidemics on repression of refugees should increase as the size of refugee population increases. Table 5 presents supporting evidence for this expectation. Model 8 is our main model with the inclusion of an interaction between epidemics and the refugee population share.

Because the coefficients of the interaction effect can be difficult to interpret directly, we illustrate the substantive effects from this model in figure 1. This figure shows the expected marginal effect (and the associated confidence intervals) on the probability of any level of government repression of refugees if an epidemic occurs, compared to when an epidemic does not occur, across the range of the variable capturing the refugee population as a share of the local host population. For example, for most countries that host a negligible refugee population, an epidemic is expected to increase the likelihood of repression by around 2%–5%. However, for countries hosting more sizeable populations of refugees such as Republic of Congo, Liberia, and Iran where refugees have on average in the past 10–20 years represented around 2% of the resident population, an epidemic is expected to increase the risk of

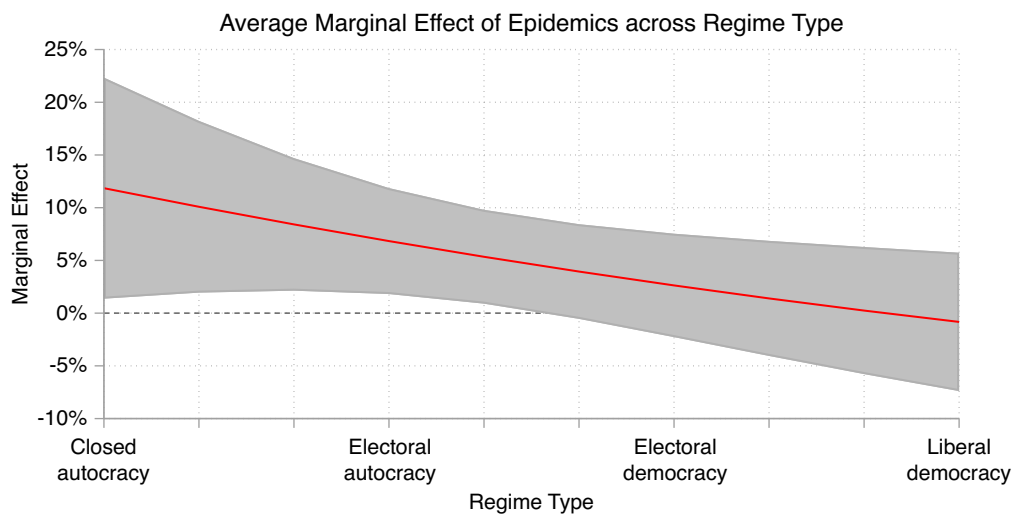
repression of refugees by nearly 20%. Going further, countries such as Jordan where refugees in recent times makeup from 5% to 10% of the population, the risk of repression increases by around 50% to 80% if an epidemic occurs. Taken together, given the status of these and similar countries as refugee hosting countries, this reflects a considerable increase to the risk of government repression of refugees.

Model 9 (table 5) provides results for our test of HYPOTHESIS 3. Here we include an interaction term between epidemics and the measure of regime type. Although the parameter estimate on the interaction term is only approaching conventional levels of statistical significance, it is in the direction hypothesized, and it is still important to visualize the effects of epidemics across the range of autocracy-democracy ( $p = .08$ ). Figure 2 presents this parameter estimate, again in terms of the marginal effect on repression if an epidemic occurs compared to when an epidemic does not occur. In line with our expectations, the relationship between the occurrence of epidemics and violence against refugees is present but only remains statistically significant in the range of autocratic government. In substantive terms, the expectation of government repression of refugees increases by just over 10% in closed autocracies and around 7% in electoral autocracies when an epidemic outbreak occurs, as compared to periods without epidemics. By contrast, the effect of epidemics on repression of refugees is not statistically

**Figure 1**  
The marginal effect of epidemics on repression of refugees across refugee population share



**Figure 2**  
The marginal effect of epidemics on repression of refugees across regime type



significant across the range of the variable identifying forms of democratic government. As argued earlier, one likely reason for this is that while democratic governments may have incentives to try to reduce the numbers of refugees being hosted locally, they likely also have lower incentives (than autocracies) to specifically do so during crises. This is likely because they are better able to detect,

report, and respond to epidemic outbreaks given their public health infrastructure, economic resources, and institutional capacity (Oppenheim et al. 2019).

**Conclusion**

Refugees are more commonly the targets of violence and repression than they are its perpetrators (Onoma 2013).

Refugee journeys often begin out of a desire to escape the dangers of violence. All too often, these journeys end with subsequent forms of victimization (Fisk 2018, Savun and Gineste 2019). In this paper, we demonstrate one potential source of this subsequent victimization: that governments appear to increase their violent targeting of refugee populations as the number of epidemics experienced locally increases. This effect, which we attribute to scapegoating (see also Savun and Gineste 2019) and opportunistic repression (Grasse et al. 2020), appears especially strong during epidemic outbreaks, when the country is host to larger proportions of refugees, and when the host government is autocratic.

These secondary effects are especially important for our understanding of the burdens faced by refugee host countries and the difficult situations that refugees face in these contexts. In addition to identifying a general relationship between the occurrence of epidemics and government repression of refugee populations, our analyses suggest this effect is even greater in contexts in which the government is hosting larger populations of refugees (relative to citizen populations). In other words, governmental anti-refugee violence is especially likely in contexts in which tensions between host and refugee populations are already likely to be heightened or in situations in which governments have a pre-existing agenda to try to coerce refugee populations to leave the country and deter potential future refugees from arriving. In such circumstances, it appears that governments can more easily scapegoat and opportunistically repress the outgroup without fear of backlash from the native citizenry. This makes sense on a practical level and also means that the UNHCR and relief agencies have yet another reason to dedicate their scarce resources to those contexts in which local hosts are heavily burdened.

This task is arguably made more difficult, however, by the fact that these effects are also greatest in the population of autocratic states—environments in which non-governmental actors often have many more obstacles to navigate in carrying out their work. Given the current trend towards nationalist and populist regimes (Pevehouse 2020) and the potential for democratic backsliding during the ongoing COVID-19 pandemic (Greitens 2020; Stasavage 2020), we should pay close attention to the potential for this identified relationship to be exacerbated as we move forward.

Our theory and empirical analyses largely treat refugee populations as if they are homogenous. Of course, it may be that not all refugee populations are equally likely to be targeted for repression by host governments. For example, following our logic, one might anticipate that refugees sharing ethnic ties with discriminated groups in host states are more likely to face repression than are those with no ethnic ties. Our models show that this is usually the case. It is plausible that this effect is further amplified during

epidemics. While this is a direct implication of our argument, we do not have appropriate data to test this conditional effect. The POSVAR dataset does not allow us to distinguish whether refugees that are the targets of government repression share ethnicity with politically excluded groups in host states.

While the ongoing COVID-19 epidemic is not captured in our analyses, our findings do suggest that we should be vigilant for signs of governments targeting their wrath at vulnerable refugee populations when they look to shift focus away from their own poor handling of the situation. Vigilance is especially warranted, it would seem, as a means of guarding against informal violations of norms of and commitments to *non-refoulement*. In terms of explaining the effect of epidemic outbreak on targeting of violence against refugees, we do not trace blame attribution in this study. Thus, we cannot observe directly whether governments are likely to take the heat for responding slowly to crises and, thus, have an incentive to try to shift this blame on to more vulnerable populations. Nor do we demonstrate whether governments enjoy any benefits from this shift of blame and subsequent targeting of the vulnerable populations. We do hope, though, that our initial evidence spurs further investigation into these and related dynamics.

## Acknowledgements

The authors are supported by the Army Research Office under Grant Number W911NF-17-1-0030. The views and conclusions contained in this document are those of the authors and should not be interpreted as representing the official policies, either expressed or implied, of the Army Research Office or the U.S. Government

## Notes

- 1 A related tool that leaders use to thwart challenges, in particular in autocracies, is to co-opt opposition through spoils and policy concessions (Gandhi and Przeworski 2007).
- 2 We do not suggest that repression and adopting policies to address grievances are mutually exclusive. Most governments use a combination of tools. However, incentives and opportunities to use repression in the time of crises are higher than other times (Hafner-Burton, Helfer, and Faris 2011; Grasse et al. 2020).
- 3 Schon 2020 discusses several factors that make refugees particularly vulnerable during the COVID-19 pandemic including living in high density areas with shortages of water, sanitation and hygiene infrastructure, limited economic opportunities, as well as misinformation.
- 4 <https://www.straitstimes.com/world/europe/foreigners-migration-to-blame-for-coronavirus-spread-hungary-pm>.



- 5 <https://www.newframe.com/far-right-uses-coronavirus-to-scapegoat-refugees/>.
- 6 <https://www.reuters.com/article/us-health-coronavirus-malaysia-migrants/malaysia-rounds-up-migrants-to-contain-coronavirus-u-n-warns-of-detention-risks-idUSKBN22E04A>.
- 7 <https://www.hrw.org/news/2020/04/02/lebanon-refugees-risk-covid-19-response>.
- 8 We use repression and violation of physical integrity rights interchangeably.
- 9 It is important to note, though, that this does not mean that if refugees had electoral power they would be protected from being exposed to violence. As Dancygier 2010 demonstrated, immigrants who hold the right to vote in elections are more likely to experience violence at the hands of local citizens than are those who do not have the right to vote. This is especially the case during times of economic scarcity.
- 10 Hafner-Burton, Helfer, and Fariss 2011 discuss how human rights treaties often authorize states to derogate, i.e., restrict and suspend civil and political liberties, to minimize treaty violations during crises. This suggests that rights violations during emergencies are less likely to draw international criticism, providing flexibility for governments to resort to measures that may not be condoned in normal times.
- 11 <https://www.cdc.gov/coronavirus/2019-ncov/covid-data/investigations-discovery/hospitalization-death-by-race-ethnicity.html>.
- 12 <https://theconversation.com/state-of-emergency-how-different-countries-are-invoking-extra-powers-to-stop-the-coronavirus-134495>.
- 13 <https://www.nytimes.com/2020/03/30/world/europe/coronavirus-governments-power.html>.
- 14 <https://politicalviolenceataglance.org/2020/03/25/militarization-of-the-police/>.
- 15 The likelihood and cost of electoral punishment may vary depending on various factors, such as regime type, the degree of threat, leaders' job security, and target of repression (Davenport 2007; Conrad and Ritter 2013; Savun and Gineste 2019). For theoretical parsimony, we make the assumption that leaders tend to avoid pursuing policies that may hurt their political survival; Bueno de Mesquita et al. 2003.
- 16 [http://www.nbcnews.com/id/21653369/ns/health-second\\_opinion/t/research-rewrites-first-chapter-aids-us/#.X2K1XtNKg6g](http://www.nbcnews.com/id/21653369/ns/health-second_opinion/t/research-rewrites-first-chapter-aids-us/#.X2K1XtNKg6g).
- 17 <https://www.nytimes.com/1993/06/15/us/haitians-with-hiv-leave-cuba-base-for-lives-in-us.html>.
- 18 <https://www.thenation.com/article/archive/legacy-guantanamo/>.
- 19 <https://www.amnestyusa.org/press-releases/covid-19-governments-and-police-must-stop-using-pandemic-as-pretext-for-abuse/>.
- 20 <https://www.justsecurity.org/69570/covid-19-and-humanitarian-access-for-refugees-and-idps-part-2-syria-and-bangladesh/>.
- 21 <https://www.hrw.org/news/2020/03/17/greece-violence-against-asylum-seekers-border>
- 22 <https://www.ncbi.nlm.nih.gov/pmc/articles/PMC6247124/>.
- 23 <https://www.cdc.gov/mmwr/volumes/69/wr/mm6922e1.htm>.
- 24 Interestingly, while the number of refugees hosted in low-income countries has increased from 70% in 2002 (Clark 2002) to the current level of 85%, we have also seen a growth in the number of asylum seekers traveling to the world's wealthiest continent, Europe: from fewer than 250,000 in 2010 to more than 1.3 million in 2015; Pew Research Center 2016.
- 25 On the other hand, Savun and Gineste 2019 argue that democracies are more likely to use violence against refugees in the wake of terrorist attacks than autocracies. The difference in our expectation from Savun and Gineste can be explained by the type of crisis we are interested in: security versus health crises. In the context of security crisis, the recent experimental research suggests that publics in democracies are tolerant of their governments' restricting and violating the rights of out-groups that they find threatening. They support the torture of individuals with Arabic sounding names (Conrad et al. 2018; Young and Kearns 2020) and associate violent incidents perpetrated by actors described as Muslim as terrorism rather than other types of descriptions (Huff and Kertzer 2018; D'Orazio and Salehyan 2018).
- 26 GVI includes the following nine forms of violence or repression: killing, sexual violence, torture, beating, shooting, violent repatriation, extortion, destruction or confiscation of property, and harassment. For more information about the specific coding procedures, see Gineste and Savun 2019.
- 27 The results from the analyses are very similar if all levels (0 to 3) are retained or if repression is dichotomized (0 = no repression, 1 = any level of repression is present).
- 28 In total, 18% of the observations (country-years) experienced at least one epidemic in the previous year. Of these observations, almost two-thirds (64%) experienced only one epidemic.
- 29 Summary statistics of all variables are provided in table 1.
- 30 We recognize that this is not an ideal test as the POSVAR dataset does not allow us to distinguish whether refugees that are the targets of government repression share ethnicity with politically excluded groups in host states.
- 31 We also computed the same models using the CIRI Physical Integrity Rights Index, which measures the

level of governmental respect for human rights (Cingranelli and Richards 1999). However, as the models give equivalent results and that the CIRI index is not updated after 2011 using the same coding scheme, we present the models using the PTS.

- 32 It is worth reiterating that this PTS measure is lagged one year behind our dependent variable. This lagging gives us some confidence in the validity of our inferences and reduces our concern about potential endogeneity, because there are no prospects for observed cases of repression of refugees to have affected the observed level of overall physical-integrity rights violations.
- 33 Diagnostic checks suggest only mild levels of multicollinearity between our independent variables, with a highest VIF of 2.91. Perhaps most crucially, we identify no multicollinearity between our control variables and epidemics, our primary explanatory variable (Belsley, Kuh, and Welsch 2005). We therefore choose to include all control variables in our models to estimate results regarding the effect of epidemic outbreaks.
- 34 The FE specification excludes all observations for which there is no within-panel variation. This results in the omission of approximately 25% of observations compared to the OLR specification.
- 35 To determine whether a model that includes epidemics better fits the data than one without epidemics, we calculated Akaike's information criterion (AIC) and Bayesian information criterion (BIC). Both measures indicate that the model with epidemics is preferable.
- 36 A country is considered as experiencing multiple epidemics if different bacterial or viral disease outbreaks occur in the same country at the same time or if there are demonstrably distinct outbreaks of the same kind of disease in the same country-year. As noted previously, 82% of country-years experience no epidemics, 12% experience one epidemic in any given year, 4% experience two epidemics, 1.5% experience three epidemics, 0.5% experience four epidemics, and 0.6% experience five or more epidemics.
- 37 It is worth noting that both variables on the estimated numbers of deaths and affected by epidemics are highly skewed. For example, in terms of deaths, while the maximum observed is in excess of 5,539 deaths in a country-year, 84% of observations are equal to 0, and at the 90th percentile the value is 25 deaths.

## References

- Akar, Sevda, and M. Mustafa Erdogdu. 2019. "Syrian Refugees in Turkey and Integration Problem Ahead." *Journal of International Migration and Integration* 20(3): 925–40.
- Belsley, David A., Edwin Kuh, and Roy E. Welsch. 2005. *Regression Diagnostics: Identifying Influential Data and Sources of Collinearity*. New York: John Wiley & Sons.
- Bjørnskov, Christian, and Stefan Voigt. 2020. "When Does Terror Induce a State of Emergency? And What Are the Effects?" *Journal of Conflict Resolution* 64(4): 579–613.
- Böhmelt, Tobias, Vincenzo Bove, and Kristian Skrede Gleditsch. 2019. "Blame the Victims? Refugees, State Capacity, and Non-state Actor Violence." *Journal of Peace Research* 56(1): 73–87.
- Braithwaite, Alex, Tiffany S. Chu, Justin Curtis, and Faten Ghosn. 2019. "Violence and the Perception of Risk Associated with Hosting Refugees." *Public Choice* 178 (3/4): 473–92.
- Bueno de Mesquita, Bruce, Alastair Smith, Randolph Siverson, and James D Morrow. 2003. *The Logic of Political Survival*. Cambridge, MA: MIT Press.
- Carlson, Matthew, and Ola Listhaug. 2007. "Citizens' Perceptions of Human Rights Practices: An Analysis of 55 Countries." *Journal of Peace Research* 44(4): 465–83.
- Chambers, Robert. 1986. "Hidden Losers? The Impact of Rural Refugees and Refugee Programs on Poorer Hosts." *International Migration Review* 20(2): 245–63.
- Chu, Tiffany. 2020. "Hosting Your Enemy: Accepting Refugees from a Rival State and Respect for Human Rights." *Journal of Global Security Studies* 5(1): 4–24.
- Cingranelli, David L., and David L. Richards. 1999. "Measuring the Level, Pattern, and Sequence of Government Respect for Physical Integrity Rights." *International Studies Quarterly* 43(2): 407–17.
- Clark, Jennifer. 2002. "Poor Countries Host Most Refugees; Rich Countries Should Share Burden, Says New UNHCR Statistics Handbook." UNHCR news release. Retrieved February 24, 2020 (<https://www.unhcr.org/en-us/news/latest/2002/11/3dcbc07f4/poor-countries-host-refugees-rich-countries-share-burden-says-new-unhcr.html>).
- Cohn, Samuel. 2012. "Pandemics: Waves of Disease, Waves of Hate from the Plague of Athens to A.I.D.S." *Historical Research* 81(230): 525–55.
- Conrad, Courtenay R., Justin Conrad, James Igoe Walsh, and James A. Piazza. 2017. "Who Tortures the Terrorists? Transnational Terrorism and Military Torture." *Foreign Policy Analysis* 13(4): 761–86.
- Conrad, Courtenay R., Sarah E. Croco, Brad T. Gomez, and Will H. Moore. 2018. "Threat Perception and American Support for Torture." *Political Behavior* 40(4): 989–1009.
- Conrad, Courtenay R., and Emily H. Ritter. 2013. "Treaties, Tenure, and Torture: The Conflicting Domestic Effects of International Law." *Journal of Politics* 75(2): 397–409.
- Coppedge, Michael, John Gerring, Staffan I. Lindberg, Svend-Erik Skaaning, Jan Teorell, David Altman, Michael Bernhard, M. Steven Fish, Adam Glynn, Allen Hicken, Carl Henrik Knutsen, Kyle L. Marquardt, Kelly M. McMann, Farhad Miri, Pamela Paxton, Daniel

- Pemstein, Jeffrey K. Staton, Eitan Tzelgov, Yi-ting Wang and Brigitte Seim. 2016. *V-Dem Dataset*, V6.2.
- Dancygier, Rafaela M. 2010. *Immigration and Conflict in Europe*. Cambridge: Cambridge University Press.
- Danneman, Nathan, and Emily H. Ritter. 2014. "Contagious Rebellion and Preemptive Repression." *Journal of Conflict Resolution* 58(2): 254–79.
- Davenport, Christian. 2007. *State Repression and the Domestic Democratic Peace*. Cambridge: Cambridge University Press.
- D’Orazio, Vito, and Idean Salehyan. 2018. "Who Is a Terrorist? Ethnicity, Group Affiliation, and Understandings of Political Violence." *International Interactions* 44(6): 1017–39.
- Davis, Darren, and Brian D. Silver. 2004. "Civil Liberties vs. Security: Public Opinion in the Context of the Terrorist Attacks on America." *American Journal of Political Science* 48(1): 28–46.
- Dionne, Kim Yi, and Fulya Felicity Turkmen. 2020. "The Politics of Pandemic Othering: Putting COVID-19 in Global and Historical Context." *International Organization* 74(1): 213–30.
- Dutta, Sunasir, and Hayagreeva Rao. 2015. "Infectious Diseases, Contamination Rumors and Ethnic Violence: Regimental Mutinies in the Bengal Native Army in 1857 India." *Organizational Behavior and Human Decision Processes* 129: 36–47.
- Erlanger, Steven. 2020. "Europeans Erect Borders against Coronavirus, but the Enemy Is Already Within." *New York Times*, April 15. Retrieved May 10, 2020 (<https://www.nytimes.com/2020/03/15/world/europe/coronavirus-borders-fear.html>).
- Evans, Richard J. 1988. "Epidemics and Revolutions: Cholera in Nineteenth-Century Europe." *Past & Present* 120: 123–46.
- Fincher, Corey L., and Randy Thornhill. 2012. "Parasite-Stress Promotes In-Group Assortative Sociality: The Cases of Strong Family Ties and Heightened Religiosity." *Behavioral and Brain Sciences* 35(2): 61–79.
- Fisk, Kerstin. 2018. "One-Sided Violence in Refugee-hosting Areas." *Journal of Conflict Resolution* 62(3): 529–56.
- Gandhi, Jennifer, and Adam Przeworski. 2007. "Authoritarian Institutions and the Survival of Autocrats." *Comparative Political Studies* 40(11): 1279–301.
- Ghosh, Faten, and Alex Braithwaite. 2018. "Could Contact Stem the Rising Tide of Negative Attitudes towards Hosting Syrian Refugees in Lebanon?" *Oxford Monitor of Forced Migration: Field Monitor* 7(2): 69–74.
- Ghosh, Faten, Alex Braithwaite, and Tiffany S. Chu. 2019. "Violence, Displacement, Contact, and Attitudes toward Hosting Refugees." *Journal of Peace Research* 56(1): 118–33.
- Gibney, Mark, Linda Cornett, Reed Wood, Peter Haschke, Daniel Arnon, Attilio Pisanò, Gray Barrett, and Baekwan Park. 2020. *The Political Terror Scale 1976–2019*. Retrieved January 15, 2021 (<http://www.politicalterrorsscale.org>).
- Gineste, Christian, and Burcu Savun. 2019. "Introducing POSVAR: A Dataset on Refugee-Related Violence." *Journal of Peace Research* 56(1): 134–45.
- Gleditsch, Nils Petter, Peter Wallensteen, Mikael Eriksson, Margareta Sollenberg, and Håvard Strand. 2002. "Armed Conflict 1946–2001: A New Dataset." *Journal of Peace Research* 39(5): 615–37.
- Gómez, Eduardo J., and Joseph Harris. 2016. "Political Repression, Civil Society and the Politics of Responding to AIDS in the BRICS Nations." *Health Policy and Planning* 31: 56–66. doi: 10.1093/heapol/czv021.
- Grasse, Donald, Melissa Pavlik, Hilary Matfess, and Travis B. Curtice. 2020. "Opportunistic Repression: Civilian Targeting by the State in Response to COVID-19." Working Paper.
- Greitens, Sheena Chestnut. 2020. "Surveillance, Security, and Liberal Democracy in the Post-COVID World." *International Organization* 74(1): 169–190.
- Guha-Sapir, Deberati. 2020. *EM-DAT: The Emergency Events Database*. Belgium: Université catholique de Louvain (UCL)—CRED.
- Hafner-Burton, Emilie M., Laurence R. Helfer, and Christopher J. Fariss. 2011. "Emergency and Escape: Explaining Derogations from Human Rights Treaties." *International Organization* 65(4): 673–707.
- Hammerstad, Anne. 2000. "Whose Security? UNHCR, Refugee Protection and State Security after the Cold War." *Security Dialogue* 31(4): 391–403.
- Huddy, Leonie; Stanley Feldman, Charles Taber, and Gallya Lahav. 2005. "Threat, Anxiety, and Support of Antiterrorism Policies." *American Journal of Political Science* 49(3): 593–608.
- Huff, Conor, and Joshua D. Kertzer. 2018. "How the Public Defines Terrorism." *American Journal of Political Science* 62(1): 55–71.
- Isaksen, Joachim Vogt. 2019. "The Impact of the Financial Crisis on European Attitudes toward Immigration." *Comparative Migration Studies* 7(1): 1–20.
- Kahn, Matthew. 2005. "The Death Toll from Natural Disasters: The Role of Income, Geography and Institutions." *Review of Economics and Statistics* 87(2): 271–84.
- Kam, Cindy D., and Donald R. Kinder. 2007. "Terror and Ethnocentrism: Foundations of American Support for the War on Terrorism." *Journal of Politics* 69(2): 320–38.
- Kishi, Roudabeh. 2020. "How the Coronavirus Crisis Is Silencing Dissent and Sparking Repression." *Foreign Policy*. July 21. (<https://foreignpolicy.com/2020/07/21/how-the-coronavirus-crisis-is-silencing-dissent-and-sparking-repression/>).

- Klein, Graig R., and Efe Tokdemir. 2019. "Domestic Diversion: Selective Targeting of Minority Out-Groups." *Conflict Management and Peace Science* 36(1): 20–41.
- Kydd, Andrew H., and Barbara F. Walter. 2006. "The Strategies of Terrorism." *International Security* 31(1): 49–80.
- Landau, Loren B. 2008. *The Humanitarian Hangover: Displacement, Aid, and Transformation in Western Tanzania*. Johannesburg: Witwatersrand University Press.
- McGrew, Roderick E. 1965. *Russia and the Cholera, 1823–1832*. Madison: University of Wisconsin Press.
- Nordas, Ragnihld, and Christian Davenport. 2013. "Fight the Youth: Youth Bulges and State Repression." *American Journal of Political Science* 57(4): 926–40.
- Oppenheim, Ben, Mark Gallivan, Nita K. Madhav, Naor Brown, Volodymyr Serhiyenko, Nathan D. Wolfe, and Patrick Ayscue. 2019. "Assessing Global Preparedness for the Next Pandemic: Development and Application of an Epidemic Preparedness Index". *BMJ Global Health* 4(1): e001157.
- Onoma, Ato K. 2013. *Anti-Refugee Violence and African Politics*. Cambridge: Cambridge University Press.
- Paik, Naomi. 2006. "The 'Visible Scapegoats' of U.S. Imperialism: HIV Positive Haitian Refugees and Carceral Quarantine at Guantanamo Bay." *Work & Culture* 4:1–22.
- Person, Bobbie, Sy Francisco, Kelly Holton, Barbara Govert, and Arthur Liang. 2004. "Fear and Stigma: The Epidemic within the SARS Outbreak." *Emerging Infectious Diseases* 10(2): 358.
- Pettersson, Therese, and Magnus Öberg. 2020. "Organized Violence, 1989–2019." *Journal of Peace Research* 57(4): 597–613.
- Pevehouse, Jon. 2020. "The COVID-19 Pandemic, International Cooperation, and Populism." *International Organization* 74(1): 191–212.
- . 2016. "Number of Refugees to Europe Surges to Record 1.3 Million in 2015." August 2. Retrieved February 18, 2021 (<https://www.pewresearch.org/global/2016/08/02/number-of-refugees-to-europe-surges-to-record-1-3-million-in-2015/>).
- Poe, Steven C. 2004. "The Decision to Repress: An Integrative Theoretical Approach to the Research on Human Rights and Repression." In *Understanding human rights violations: New systematic studies*, ed. Sabine C. Carey and Steven C. Poe, 16–38. London, UK: Routledge.
- Poe, Steven C., and C. Neal Tate. 1994. "Repression of Human Rights to Personal Integrity in the 1980s: A Global Analysis." *American Political Science Review* 88(4): 853–72.
- Rüegger, Seraina. 2019. "Refugees, Ethnic Power Relations, and Civil Conflict in the Country of Asylum." *Journal of Peace Research* 56(1): 42–57.
- Rüegger, Seraina, and Heidrun Bohnet. 2018. "The Ethnicity of Refugees (ER): A New Dataset for Understanding Flight Patterns." *Conflict Management and Peace Science* 35(1): 65–88.
- Quiroz Flores, Alejandro, and Alastair Smith. 2013. "Leader Survival and Natural Disasters." *British Journal of Political Science* 43(4): 821–43.
- Salehyan, Idean. 2018. *The Strategic Case for Refugee Resettlement*. Washington, DC: Niskanen Center.
- Savun, Burcu, and Christian Gineste. 2019. "From Protection to Persecution: Threat Environment and Refugee Scapegoating." *Journal of Peace Research* 56(1): 88–102.
- Schon, Justin. 2020. "Protecting Refugees in the Middle East from Coronavirus: A Fight against Two Reinforcing Contagions" *POMPES* 39:19–21.
- Shah, Sonia. 2020. *The Next Great Migration: The Beauty and Terror of Life on the Move*. New York: Bloomsbury Publishing USA.
- Stasavage, David. 2020. "Democracy, Autocracy, and Emergency Threats: Lessons for COVID-19 from the Last Thousand Years." *International Organization* 74(1): 1–17.
- Stephan, Walter G., Oscar Ybarra, and Guy Bachman. 1999. "Prejudice Toward Immigrants." *Journal of Applied Social Psychology* 29(11): 2221–2237.
- Tir, Jaroslav, and Michael Jasinski. 2008. "Domestic-Level Diversionary Theory of War: Targeting Ethnic Minorities." *Journal of Conflict Resolution* 52(5): 641–64.
- UNHCR. 2019. "Global Trends: Forced Displacement in 2019." Retrieved February 18, 2021 (<https://www.unhcr.org/globaltrends2019/>).
- Vogt, Manuel; Nils-Christian Bormann, Seraina Rüegger, Lars-Erik Cederman, Philipp Hunziker, and Luc Girardin. 2015. "Integrating Data on Ethnicity, Geography, and Conflict: The Ethnic Power Relations Dataset Family." *Journal of Conflict Resolution* 59(7): 1327–42.
- Wallis, Patrick, and Brigitte Nerlich. 2005. "Disease Metaphors in New Epidemics: The UK Media Framing of the 2003 SARS Epidemic." *Social Science & Medicine* 60(11): 2629–39.
- Whitaker, Beth E., and Jason Giersch. 2015. "Political Competition and Attitudes Towards Immigration in Africa." *Journal of Ethnic and Migration Studies* 41(10): 1536–57.
- Whitaker, Beth Elise. 2003. "Refugees and the Spread of Conflict: Contrasting Cases in Central Africa." *Journal of Asian and African Studies* 38(2-3): 211–31.
- Wood, Reed M. 2008. "A Hand upon the Throat of a Nation? Economic Sanctions and State Repression,



- 1976-2001." *International Studies Quarterly* 52(3): 489–513.
- Wood, Reed M., and Thorin M. Wright. 2016. "Responding to Catastrophe: Repression Dynamics Following Rapid-Onset Natural Disasters." *Journal of Conflict Resolution* 60(8): 1446–72.
- Wright, Thorin M., and Shweta Moorthy. 2018. "Refugees, Economic Capacity, and Host State Repression." *International Interactions* 44(1): 132–55.
- Young, Joseph K., and Erin M. Kearns. 2020. *Tortured Logic: Why Some Americans Support the Use of Torture in Counterterrorism*. New York: Columbia University Press.
- Zargar, Haris. 2020. "Far Right Uses Coronavirus to Scapegoat Refugees." *New Frame*. March 19. Retrieved May 10, 2020 (<https://www.newframe.com/far-right-uses-coronavirus-to-scapegoat-refugees/>).