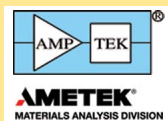


Amptek Inc.

Tel: 781-275-2242
 Email: sales@amptek.com
 www.amptek.com



FAST SDD® Detector for EDS (SEM)

APPLICATIONS: Scanning Electron Microscopes • X-ray Fluorescence • Energy-Dispersive X-ray Spectrometry • Non-destructive Analysis • Elemental Analysis

FEATURES: SDD detectors for EDS-XRF use with SEMs by OEMs. Low energy response of the Amptek FAST SDD® extends down to boron (B).

<http://www.amptek.com/products/eds-sem-applications-with-c2-window/>



Basler, Inc.

Tel: +1 610 717 0171
 Email: sales.usa@baslerweb.com
 www.baslerweb.com/microscopy



Digital Microscope Cameras

APPLICATIONS: Microscopy for Clinical & Life Science Applications • Material Inspection & Quality Control • Diagnostic Labs • Fluorescence Microscopy • Education

FEATURES: High sensitivity, excellent image quality and color reproduction, easy to use microscopy software, outstanding price/performance ratio — Basler provides over 25 years of vision technology experience and leading digital camera technology.

www.baslerweb.com/microscopy



Bruker Nano Surfaces

Tel: 805-967-1400
 Email: productinfo@bruker.com
 www.bruker.com/AFM



Dimension FastScan AFM

APPLICATIONS: Atomic Force Microscopes • High Resolution AFM Imaging • Nanomechanical Analysis • Nanoelectrical Measurements • Nanochemical Measurements

FEATURES: FastScan achieves the highest resolution imaging — any time, every time; unleashing bandwidth to go fast and explore real-time changes; capture complete quantitative nanoscale property data.

www.bruker.com/FastScan



BioScope Resolve AFM

APPLICATIONS: BioAFM • Cell Mechanical Properties • Molecular Imaging • Cell Imaging

FEATURES: Resolve offers the highest resolution imaging of all biological samples while on inverted optical microscopes with comprehensive capabilities for cell mechanics and molecular force spectroscopy.

www.bruker.com/BioAFM



Opterra II

APPLICATIONS: Multipoint Confocal Microscopy • Live Cell Fluorescence Imaging • Photomanipulation • Spectral Imaging

FEATURES: Opterra II tailors speed, resolution, and intensity for low photo-toxicity and photo-bleaching on biological specimens, with sub-10% illumination uniformity, photo-activation, spectral imaging and unmixing capabilities.



www.bruker.com/Opterra

Vutara 352

APPLICATIONS: Super-resolution Microscopy • Video-Rate, Single-Molecule Localization • Quantitative Analysis Modules • Correlative High Speed Confocal Imaging

FEATURES: Vutara 352's speed, imaging depth, and resolution deliver significant advantages over competing approaches, adding real-time quantitative analyses and including pair-correlation, co-location, cluster, and live-cell analysis.



www.bruker.com/Vutara

CoolLED Limited

Tel: 1-800-877-0128
 Email: info@cooled.com
 www.cooled.com



CoolLED pE-Series LED Illumination Systems

APPLICATIONS: • Fluorescence Microscopy • Illuminators, Light Microscopy • Lamps and Light Sources • LED Illumination • Live Cell Imaging

FEATURES: CoolLED offers a comprehensive range of LED illumination systems for bioscience and clinical microscopy. Contact the CoolLED team to learn more.



<http://www.cooled.com/products/>

Deben

Tel: +44 (0) 1359 244 870;
 +1 201 410 5028
 Email: paulg@deben.co.uk
 www.deben.co.uk



In-Situ Testing for Microscopy

APPLICATIONS: Micro CT tensile scanning stages • Centaurus scintillator CL and back scattered electron (BSE) detectors • STEM detectors for SEM • SEM heating and cooling Peltier stages • Microtest tensile and compression stages

FEATURES: Deben manufacture in-situ testing stages as well as innovative accessories for SEM and TEM including SEM detectors, stages, stage automation and Peltier heating & cooling stages.



<http://deben.co.uk/products/>

DIATOME U.S.

Tel: 215-412-8390
 Email: sgkck@aol.com
 www.emsdiasum.com



Cryo Immuno

The first cryo knife with a diamond platform and 35° cutting angle that leads to a considerable reduction in mechanical stresses and therefore to improved structure preservation in sucrose-protected samples.

Electro-Optics Technology, Inc.

Tel: 231-935-4044
 Email: sales@eotech.com
 www.eotech.com



Tornos Series - 500-1030nm Wavelength Tunable Faraday Rotators and Optical Isolators

APPLICATIONS: Confocal Microscopy • Flow Cytometry/Optical Trapping • DNA Sequencing • Environmental Monitoring • Bio-instrumentation/Bio-technology

FEATURES: Eliminate frequency instability in single frequency laser diodes and prevent parasitic oscillations due to ASE in amplified laser systems. Wavelength tunability allows optimal isolation at a variety of wavelengths.

<http://www.eotech.com/cart/40/free-space-optical-isolators/tornos-series-500-1030nm-low-power-wavelength-tunable-optical-isolators>

Electron Microscopy Sciences

Tel: 215-412-8400
 E-mail: stacie@ems-secure.com
 www.emsdiasum.com



EMS-002 Cryo Workstation

The EMS-002 Cryo Workstation is a complete ultra rapid freezing system that captures rapid events and labile structures that are not seen in chemically fixed materials.



Evactron by XEI Scientific

Tel: 650-369-0133
 Email: sales@evactron.com
 www.evactron.com



Evactron® EP Simplified De-Contaminator
APPLICATIONS: SEM and FIB remote plasma cleaner for accessory port mounting.

FEATURES: Compactly mounts on chamber port. Uses air to make oxygen radicals • Simple push button control • Available tablet interface • Same cleaning power as Zephyr • Fast Turbo Plasma mode cleaning at < 20 mTorr.

<http://www.evactron.com/products/evactron-ep/>



Evactron® SoftClean EP™ Chamber

APPLICATIONS: Desktop plasma cleaner for SEM or TEM specimens and stages - Compact EP PRS preset for optimum hydrocarbon carbon removal using air.

FEATURES: Uses removable EP plasma radical source • Push button cleaning • EasiLoader™ for TEM stages • 2 TEM stage ports • Top loading for SEM samples • RF shielded window • Gentle cleaning without surface damage • Compact and simple design • Available tablet interface



<http://www.evactron.com/products/evactron-softclean-chamber/>

Evactron® 25Z De-Contaminator

APPLICATIONS: SEM, FIB, and vacuum chamber remote plasma cleaner for accessory port mounting • Table top controller

FEATURES: Uses air to make oxygen radicals • Pre-set cleaning recipes • Available computer interface • Versatile and flexible • Vacuum interlocked • Fast Zephyr mode cleaning at < 20 mTorr



<http://www.evactron.com/products/evactron-25-zephyr-de-contaminator/>

Evactron® 40Z and 45Z Decontaminator

APPLICATIONS: SEM, FIB, and vacuum chamber remote plasma cleaner for accessory port mounting • Rack mount controller

FEATURES: Uses air to make oxygen radicals • Preset cleaning recipes • Uses computer interface • Versatile and flexible • Vacuum interlocked • Fast Zephyr mode cleaning at < 20 mTorr • Model 40Z has no local controls



<http://www.evactron.com/products/evactron-model-40-de-contaminator/>,
<http://www.evactron.com/products/evactron-model-45-de-contaminator/>

Evans Analytical Group

Tel: 1-800-366-3867
 Email: info@eag.com
 www.eag.com/mc



Material Characterization

APPLICATIONS: Microscopy Applications • Surface Analysis • Service Laboratories • Microanalysis Services • Failure Analysis

FEATURES: Providing high quality microscopy services including: SEM, S/TEM, CL, EBSD, FIB imaging and now: Aberration Corrected STEM services using a Hitachi HD-2700.

www.eag.com/mc

EXpressLO LLC

Tel: +1-321-663-3806
 Email: info@EXpressLO.com
 www.EXpressLO.com



EXpressLO™ Ex Situ Lift Out System

APPLICATIONS: FIB Lift Out • Specimen Preparation • S/TEM • EBSD • Transmission Kikuchi Diffraction

FEATURES: EXpressLO™ allows fast and easy ex situ lift out – no carbon film needed. No expensive FIB time required. Simple manipulation for backside milling, EBSD, TKD.



www.EXpressLO.com

Hamamatsu Corporation **HAMAMATSU**

PHOTON IS OUR BUSINESS

Tel: 908-231-0960
 Email: usa@hamamatsu.com
 www.hamamatsu.com



ORCA-Flash4.0

APPLICATIONS: • Super-resolution microscopy • Light sheet microscopy • TIRF microscopy • Ratio imaging • FRET

FEATURES: This 4.0-megapixel sCMOS camera offers enhanced quantum efficiency, 30 fps (USB3.0) or 100 fps (Camera Link), large dynamic range, and a wide field of view.

http://www.hamamatsu.com/us/en/community/life_science_camera/product/search/C11440-22CU/index.html

Hitachi High Technologies America, Inc.



Tel: 800-253-3053
 Email: microscopy@hitachi-hta.com
 www.hitachi-hightech.com/us

Electron, Ion, and Probe Microscopy



APPLICATIONS: • Scanning Electron Microscopes (SEMs) • Transmission Electron Microscopes (TEMs) • Atomic Force Microscopes (AFMs) • Focused Ion Beam Systems (FIB/FIB-SEMs) • Ion Beam Milling

FEATURES: Advanced solutions for materials science, biological research, and industrial manufacturing. Standard & VP-SEMs, TEM & STEMs, FIB-SEMs, Tabletop SEMs, AFMs, and microanalysis sample preparation systems.

http://www.hitachi-hightech.com/us/product_list/?id=sms2

Hysitron, Inc.



Tel: +1 952-835-6366
 Email: rstromberg@hysitron.com
 www.hysitron.com

PI 8X SEM PicoIndenter®

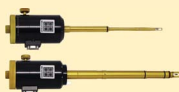


APPLICATIONS: • Nanoindentation • Compression, Tension, Bending, and Fatigue Modes • EBSD Correlation to Mechanical Properties • Tip & Sample Heating up to 800°C • Nano- to micro- in-situ testing solutions

FEATURES: CoHysitron's PI 8X Series PicoIndenters are compact, versatile nanomechanical test instruments for use in SEM, ESEM, FIB, and ambient conditions.

<https://www.hysitron.com/products-services/instruments-for-microscopes/pi-8x-sem-picoindenter>

PI 95 TEM PicoIndenter®



APPLICATIONS: • Nanoindentation and Compression • Tensile Testing of Nanowires & Thin Films • nanoScratch • Fatigue • Electrical & Heating Options

FEATURES: Hysitron's PI 95 TEM PicoIndenter interfaces with major TEM models for performing compression, tension, bending, scratch, and fatigue testing with real-time TEM observation.

<https://www.hysitron.com/products-services/instruments-for-microscopes/pi-95-tem-picoindenter>

ibss Group, Inc.



Tel: +1-650-513-1488
 Email: admin@ibssgroup.com
 www.ibssgroup.com

GV10x Downstream Asher



APPLICATIONS: • In-Situ Contamination Control • Ex-Situ Sample Cleaning & Storage • SEM/FIB/TEM • SIMS/XPS/Review SEM • Semiconductor

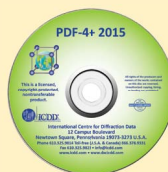
FEATURES: Reduces hydrocarbon contamination 10X to 20X more effectively and 10X faster than traditional methods; extended power range; non-damaging; ROI short as six months.

www.ibssgroup.com

International Centre for Diffraction Data



Tel: 610-325-9814
 Email: Marketing@icdd.com
 www.icdd.com



PDF-4+ 2015

APPLICATIONS: • Courses/Workshops • Databases • Journals • Materials Characterization • Phase Identification

FEATURES: PDF-4+ 2015 is a comprehensive collection of inorganic materials containing 365,877 entries, produced in a standardized format that can be rapidly searched for unknown phase identification.

<http://www.icdd.com/products/2015SalesCatalog.pdf>

LeRoy Eyring Center for Solid State Science



Tel: 480-727-8578
 Email: jeff.luth@asu.edu
<https://le-csss.asu.edu>

Electron Microscopy Services

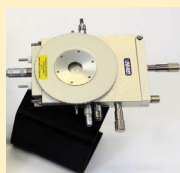
APPLICATIONS: • Microscopy Services • Materials Characterization • Surface Analysis • Instrument Training • Defect Analysis

FEATURES: Full range of characterization & high resolution imaging services, including Aberration Corrected TEM/STEM/ETEM; SEM; FIB; EELS; EDS; Optical, Structural, Surface, Thermal & Elemental analysis

<https://le-csss.asu.edu/facility/john-m-cowley-center-high-resolution-electron-microscopy>

Linkam Scientific Instruments

Tel: +44 (0) 1737 363476
 Email: Duncanstacey@linkam.co.uk
www.linkam.co.uk



THMS600 Heating/Cooling stage

APPLICATIONS: • -196°C to 600°C temperature range with liquid nitrogen • Heating rate to 150°C/min; cooling rate to 100°C/min • Better than 0.1°C accuracy and stability • Options for gas control, humidity, pressure, vacuum and electrical measurements • Mounts to enable vertical operation in IR or X-ray spectrometers

FEATURES: The most versatile heating and cooling stage available. Precise temperature control. Ideal for use with light microscopy, FT-IR, UV, Raman, X-ray, SAXS and Synchrotron.

<http://www.linkam.co.uk/thms600-features/>

CMS196M Cryo CLEM stage

APPLICATIONS: • Self-contained cryo correlative system avoiding contamination with automated liquid nitrogen refilling • High precision encoded motorized XY with high speed automated mapping • Short start up time with high long-term stability and low drift • Self-aligning magnetic sample cassette system for up to three samples • Integrated condenser optics for transmitted light



FEATURES: The Linkam Cryo-CLEM stage allows vitrified samples to be imaged in brightfield and fluorescence without contamination. Grids can be mapped to provide correlative information.

<http://www.linkam.co.uk/clem>

RH95 Humidity Generator

APPLICATIONS: • Fully self-contained humidity control from 10% to 90%RH. No dry air supply required • Highly stable +/- 0.5%. Ideal for long term material testing • Compatible with a range of Linkam stages and other sealed chambers up to two liters • Monitor the effects of environmental changes on a wide variety of materials • Optional calibration kit including chamber and salt ampoules



FEATURES: The RH95 Humidity Generator provides precise control of RH% for a range of Linkam stages, ideal for sample characterization under changing environmental conditions.

<http://www.linkam.co.uk/humidity-controller/>

WS37 Warm stages

APPLICATIONS: • Calibrated, stable temperature control - ambient to +50°C • Ideal for andrology studies at 37°C +/- 0.2°C • Liquid crystal sensor for quick, visual, temperature calibration • Touch screen controller with control of up to two stages or objective warmer, with data logging • Ideal for live cell imaging applications



FEATURES: The WS37 warm stages have been designed for andrology applications ensuring microscope slides are held at 37°C for the study of sperm count and motility.

<http://www.linkam.co.uk/warm-stages-features>

Max Levy Autograph

Tel: 1-215-842-3675
 Email: mla.custservice@ii-vi.com
www.maxlevy.com



Patterned Optical Components

APPLICATIONS: • Calibration and reference standards • Resolution standards • Stage micrometers • Standards for microanalysis • Testing equipment



FEATURES: MLA offers standard and custom metrology standards for imaging. Products are available from the X-ray out to the Infrared. Traceable calibration is a capability.

<http://www.maxlevy.com/category/patterned-optics.html>

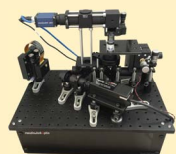
Meadowlark Optics

Tel: 303-833-4333
 Email: sales@meadowlark.com
www.meadowlark.com



1-Photon SLM Microscopy Kit

APPLICATIONS: Meadowlark Optics offers spatial light modulators with response times 8x faster than competing technologies. Our microscopy kit is ideal tool for any volumetric fluorescence studies such as calcium imaging and/or photoactivation used to monitor and manipulate up to 1500 neurons/second.



FEATURES: • Multisite scan-less excitation • Epifluorescence microscope • High speed hologram generator and calibration software • Excite and monitor activity of neuronal ensembles

http://www.meadowlark.com/spatial_light_modulators.php

Microtome Service Company

Tel: 315-451-1404
 Email: Mitch@MicrotomeServiceCo.com
www.microtomeserviceco.com



Microtome Sales, Service and Parts

APPLICATIONS: • Sorvall Microtomes and Ultramicrotomes • Rotary Microtome Repair • KnifeMaker Repairs • AO 820 & AO 860 Repairs • Fabricate & Modify Lab Equipment



FEATURES: Sales & Service of Sorvall, RMC, AO:820, 860 and Rotary Microtomes and GKM Knife Makers. Microtome & Lab accessories, fabrication and modifications to meet your specific needs. Microtome Rentals.

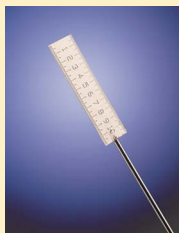
http://microtomeserviceco.com/index.php?route=information/information&information_id=7

Minitool Inc.

Tel: (408) 395-1585
 Email: rschaller@minitoolinc.com
 www.minitoolinc.com



Microtools and Instruments



APPLICATIONS: • Microscopy • Microbiology • Specimen Manipulation & Placement • Medical Research • Spectroscopy

FEATURES: Efficient, precise and realistically proportioned instruments in tip diameters from .025mm (.001") to 1.0mm (.040") are ideal for microscopists. Our line of micro-tools includes needles, graters, chisels, knives, mirrors, probers, spatulas, hooks, scribes and microrulers. Also featured are micromanipulators, micro-sharpener and micro-forceps. Tools are offered singly or in sets of eight tools with one handle to 32 tools with six handles.

www.minitoolinc.com

Oregon Physics

Tel: +1 503 601 0041
 Email: info@oregon-physics.com
 www.oregon-physics.com



Hyperion II Dual Polarity Ion Source

APPLICATIONS: • Negative and positive ion extractor • Bolt-on to existing optical system • utilize variety of gas species • Supports surface analysis (SIMS) applications • Supports high current micromachining (PFIB) applications

FEATURES: Integrates on existing ion optical systems to deliver the highest brightness, best imaging resolution and longest source lifetime for SIMS applications or high current FIB.

http://www.oregon-physics.com/hyperion2.php

FIB Consumable Parts



APPLICATIONS: • Custom aperture strips • standard aperture strips • Suppressors • Extractors • For FEI FIB columns

FEATURES: Maintain optimal FIB performance. Proven, reliable parts made to exacting standards, with fast delivery assuring your parts will be in hand quickly, ready for installation.

www.oregon-physics.com

PCO AG

Tel: +1 (248) 276 8820
 Email: info@pco-tech.com
 www.pco-tech.com



pco.flim



APPLICATIONS: • Fluorescence Lifetime Imaging Microscopy (FLIM) • Fluorescence Resonance Energy Transfer (FRET) • Confocal Microscopy • Phosphor Lifetime Imaging (PLIM)

FEATURES: The pco.flim is the first luminescence lifetime imaging camera. The camera has a revolutionary image sensor and makes use of fluorescence lifetime imaging in the frequency domain, making it suitable for numerous applications in the field of biomedical research.

http://www.pco-tech.com/special-cameras/pcoflim/

Quorum Technologies Ltd



Tel: +44(0)1323 810981
 Email: sales@quorumtech.com
 www.quorumtech.com

Q150 series of SEM & TEM sputter/carbon coaters



APPLICATIONS: • Scanning electron microscopy (SEM) sputter coating • TEM carbon coating • SEM carbon coating • Metal evaporation option • Thin film coating - including sequential sputter coating

FEATURES: The Q150T turbo-pumped series of coaters offer high resolution sputtering, carbon evaporation for SEM and TEM or both in one system. Three-year warranty is standard.

https://www.quorumtech.com/products/sputter-coaters-and-sem-tem-carbon-coaters

PP3010T Cryo-SEM/Cryo-FIB/SEM Preparation System



APPLICATIONS: • Cryo-SEM preparation and transfer • Cryo-FIB/SEM preparation and transfer • Cryo and ambient temperature transfer from glove a glove box

FEATURES: The PP3010T is a highly automated, easy to use, column-mounted, gas-cooled cryo preparation system suitable for most makes and models of SEM, FE-SEM and FIB/SEM.

https://www.quorumtech.com/quorum-product/pp3010t-cryo-sem-preparation-system

Rigaku Corporation



Tel: 281-362-2300
 Email: info@rigaku.com
 www.rigaku.com



Rigaku nano3DX

APPLICATIONS: • X-ray microscope • computed tomography • XRM • CT • High Resolution

FEATURES: Nano3DX is a X-ray microscope (XRM) with the ability to measure relatively large samples at high resolution using a high powered rotating anode X-ray source and a CCD imager.

http://www.rigaku.com/products/xrm/nano3dx

Rigaku CT Lab GX series



APPLICATIONS: • Ultra-high-speed CT scan and image reconstruction • High-resolution wide field-of-view measurement • Uses "Sample-Stationary Method" • Low running cost

FEATURES: CT Lab GX series, for ultra-high-speed, high-resolution 3D X-ray micro CT. Using the Sample-Stationary Method, devices can perform CT scans in 8 seconds at top speed, with a minimum resolution of 4.5 μm.

http://www.rigaku.com/en/products/xrm/ctlab

SmarAct Inc

Tel: 415-766-9006
Email: info@smaract.com
www.smaract.com



SmarAct Microscopy stage

APPLICATIONS: • Micro and nano- manipulators • Vacuum-compatible piezo stages • Probe testing positioners • Picoscale laser Interferometer • Micro-grippers

FEATURES: SmarAct offers piezo-based high performance micro- and nanopositioners, advanced control systems; complete miniaturized manipulation systems and custom compact positioning systems that have sub-nm resolution.



http://www.smaract.de/FTP/SmarAct_Catalog_2015.pdf

SPI Supplies

Tel: 610-436-5400
Email: sales@2spi.com
www.2spi.com



UV Prep

APPLICATIONS: • Materials Science • Life Science • Semiconductor • Low Voltage Imaging • Failure Analysis

FEATURES: The UV Prep is designed to remove hydrocarbon contamination from a sample surface prior to FE-SEM examination. The result is enhanced imaging and resolution at low accelerating voltages.



Plasma Prep™ III

APPLICATIONS: • Materials Science • Life Science • Semiconductor • Asbestos • Failure Analysis

FEATURES: Solid state RF generator capable of 1 to 100W operations; Low Temperature asher/etcher; small footprint; 4" diameter x 6" depth Pyrex or Quartz Chamber; Optional Process Controller; Optional system for cleaning TEM Specimen Holders.



Wet Cell II

APPLICATIONS: • Materials Science • Life Science • Microfluidic Analytical Techniques • Self-contained Interface • Vacuum Compatible

FEATURES: The next generation device for the examination of liquids in SEM/EDS and TOF-SIMS instruments. The self-contained high vacuum compatible device enables the analyst to characterize a fluid in its natural state.



Sutter Instrument

Tel: 415-883-0128
Email: alex@sutter.com
www.sutter.com



SmartShutter™

APPLICATIONS: Shuttering, Fluorescence Microscopy, Life Sciences, Imaging Hardware

FEATURES: • Life tested to 100 million cycles • Complete opening time 8 msec from trigger • Select partial opening function for neutral density capability • "Soft" mode provides minimum vibration • Stand alone, or use with Sutter filter wheel



Lambda XL

APPLICATIONS: Microscope Illumination, Fluorescence Microscopy, Life Sciences, Imaging Hardware, OEM Illumination

FEATURES: • 10,000 hour expected lifetime for bulb • No high-voltage pulse • Highly stable output (less than ±1% fluctuations) • Built-in driver for Sutter filterwheel and SmartShutter • Low light loss through bulb life



Lambda DG-4 / DG-5 PLUS

APPLICATIONS: Fluorescence Microscopy, Ratio-metric Imaging, Wavelength Switching, Imaging Hardware, Life Sciences

FEATURES: • 0.5 msec switching between filters • Integrated light source and wavelength switching excitation system • Holds four or five interference filters and one neutral density filter • Light guide output provides uniform illumination • Direct computer control via parallel or serial interface



Lambda 10-3

APPLICATIONS: Fluorescence Microscopy, Ratio-metric Imaging, Wavelength Switching, Imaging Hardware, Life Sciences

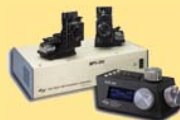
FEATURES: • As fast as 40 msec between adjacent filters (10 position wheel) • As fast as 31 msec between adjacent filters (4 position wheel) • Can control up to 3 wheels and 2 shutters, or 2 wheels and 3 shutters • Compatible with SmartShutter™ stepper-motor controlled shutter • Controls a variety of 12, 25, 32, and 50 mm filterwheels



MPC-385 / MPC-325

APPLICATIONS: Life Sciences, Micromanipulation, Electrophysiology

FEATURES: • Single controller and ROE will run 2 stepper motor drive manipulators • User-friendly interface: single button access to all major functions • Accelerated mode for fast, manual manipulator movement • Definable 4th axis for coaxial pipette movement • Ultra-low drift, ultra-smooth movement.



SOM—Simple Moving Microscope

APPLICATIONS: • Fluorescence Microscopy • *In vivo* microscopy • *In vitro* microscope • Life sciences • Photostimulation

FEATURES: The SOM is a small, simple microscope designed to allow a single experimental setup to be used for both *in vivo* and *in vitro* experimentation.



Ted Pella, Inc.

Tel: 800-237-3526
 Email: sales@tedpella.com
 www.tedpella.com



High Resolution FE-SEM Sputter and Carbon Coaters



APPLICATIONS: • Life Sciences • Materials Science • Semiconductors • SEM

FEATURES: • Grain-free, ultra-thin uniform and conformal coating • Wide choice of operating parameters to accommodate all sample types • Purpose designed with optimized vacuum pumping system • Rotary-Planetary-Tilting stage and high resolution thickness controller • Easy to operate with fast cycle times

www.tedpella.com/cressington.htm

PELCO BioWave® Pro



APPLICATIONS: • Microwave Tissue Processing for EM • Light Microscopy • Immunolabeling and Decalcification

FEATURES: ColdSpot® technology • Prevents heat damage • Rapid specimen turnaround • Variable power processing • Pre-programmed protocols

www.tedpella.com/BioWave.htm

PELCO easiGlow™

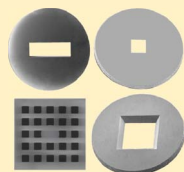


APPLICATIONS: • Life Sciences • Materials Science • TEM • Tomography

FEATURES: Precise and easy vacuum settings • Short cycle times • Consistent results • Intuitive touch screen for control and display • Supports hydrophilic/hydrophobic and negative/positive modes

www.tedpella.com/easiGlow.htm

PELCO® Silicon Nitride Support Films and TEM Supplies



APPLICATIONS: • TEM • STEM • Thin Film Research • Life Sciences • Materials Science

FEATURES: Holey SiN films down to 100nm • Solid membrane thickness of 8, 15, 35, 50 and 200nm • 3mm diameter frame fits standard TEM holders • EasyGrip™ edges for improved handling • Variety of window shapes and sizes

www.tedpella.com/TEM-supplies.htm

PELCO® Modular SEM/FIB Sample Holders and Supplies



APPLICATIONS: • SEM • FE-SEM • FIB • FIB/SEM • CLEM

FEATURES: Stage adapters for all major SEM brands • Large selection of effective and practical sample holders • Correlative microscopy sample holders • Conductive adhesives • Carbon tabs • Conductive tape

www.tedpella.com/SEM-supplies.htm

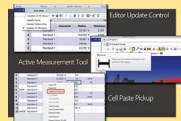
Zemax, LLC

Tel: 425-305-2800
 Email: sales@zemax.com
 www.zemax.com



OpticStudio

APPLICATIONS: • Imaging Optics • Lighting & Illumination • Lasers • Fibers • Biomedical Imaging



FEATURES: OpticStudio 15.5 adds speed, capability, convenience, and flexibility to the most widely used optical and illumination design software in the industry • Optimize classic lens designs 18x faster, easier, and with better results • Added mobility for multi-user network systems with software licensing • Incorporate high-resolution holograms and phase masks into optical system designs • Deeper, easier visualization of 2D/3D optical system designs

Expand your Knowledge of Microscopy with

MSA Membership!

Whether your primary focus is in the biological or the physical sciences, MSA takes your knowledge to the next level!

Members Receive:

- A personal subscription to MSA's official journal, *Microscopy and Microanalysis*, and MSA's popular bi-monthly magazine, *Microscopy Today*.
- Peer Networking through the Society's Focused Interest Groups and Local Affiliated Societies.
- MSA Awards Programs, Scholarships, Speaker Opportunities, and much more!

Join MSA Today!

For more information:
 visit www.microscopy.org



or call 1-800-538-3672

creating the best environment for microscopy...



https://doi.org/10.1017/S1551929516000629 Published online by Cambridge University Press

high performance anti-vibration platforms and workstations

Our state-of-the art workstations and platforms are the result of many years of development. They provide the user with a truly vibration-free surface on which to place equipment. Our products are available in a wide range of sizes and shapes to support instruments of varying weights and footprints.

- 2Hz natural frequency built-in air isolators
- Active self leveling and passive pump up versions
- Highly rigid laminated construction with damping core
- Low cost, easy to install and free from maintenance
- Ideal for laboratories and clean rooms, will meet Class 10 (Class 1 available)
- Simple, compact, easy to use and clean

a wide range of styles, sizes, options and accessories...

Active Platforms: AMF Series

Self-leveling and ideal for use when loads on the platform are likely to change.

Passive Platforms: AMP Series

Designed to be pumped-up and left alone. Ideal for use with fixed loads or in applications where pressurized air or gas cannot be used.

Side Tables: AMT Series

In a wide range of sizes and finishes..

Isolation Platforms: AMS Series

For heavy instruments.

Balance Tables: AMB Series

Weighted to 25kg and are for use with light instruments such as balances.

High Load Workstations: AMH Series

Designed for heavy instruments such as electron microscopes, which require high degrees of isolation from vibrations.

Contoured Platforms: AMC Series

Light and compact passive platform specially designed for instruments such as microscopes.

a better working environment

Workstations provide a tailored working environment as well as featuring an isolation platform built into the work surface, making working with a microscope both faster and easier, leading to more reliable measurements in your laboratory. Platforms can also be used stand alone beneath microscopes to isolate them from external disturbances and speed up measurement.



flexible solutions

We offer a range of workstations and platforms to suit different environments and microscope performance levels. Workstations feature a platform mounted on a study steel frame with height adjustable leveling feet and guards to protect the table from accidental knocks during use.



ergonomic design

The ergonomic workstation design minimizes user stress. With the active area option microscope platforms sit flush with the work surface and the surrounding area is useable for general work. Frames have height adjustable leveling feet, for stability and user comfort with retractable castor feet, frame shelf and monitor support optional.



please contact us for more information

**Electron
Microscopy
Sciences**

P.O. Box 550 • 1560 Industry Rd. • Hatfield, Pa 19440
Tel: (215) 412-8400 • Fax: (215) 412-8450
email: sgkck@aol.com or stacie@ems-secure.com
www.emsdiasum.com