

PMLA

*Publications of the
Modern Language Association
of America*

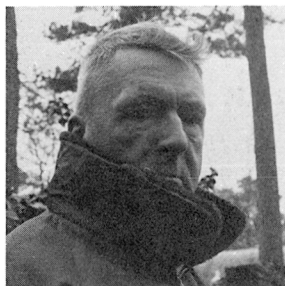
September 1976

Volume 91 Number 4

Directory

ILLINOIS SHORT FICTION 1976

These four titles comprise the second set of volumes in Illinois's new series. They are published simultaneously in paperback @ \$2.95 and in cloth @ \$6.95.

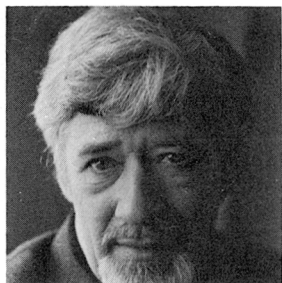


ROLLING ALL THE TIME

James Ballard. A Tennessean now living in Atlanta, Ballard served in the Strategic Air Command and has worked at such jobs as welding, truckdriving, bombing, baking and lumbering. He has published a novel, *The Long Way Through*, and his stories have appeared in *Atlantic Monthly*, *Massachusetts Review*, *Northwest Review*, *New Mexico Review*, and *Tri-Quarterly*; one was reprinted in a best-of-the-year collection.

LOVE IN THE WINTER

Daniel Curley. Professor of English at the University of Illinois. *In the Hands of Our Enemies* (University of Illinois Press, 1970), a collection of his stories, won a National Council of the Arts award. Widely published in outstanding literary magazines, he also has written two novels, *How Many Angels?* and *A Stone Man? Yes*. Has been a Guggenheim Fellow and a Fellow in the Center for Advanced Studies, Urbana, Illinois.



TO BYZANTIUM

Andrew Fetler. Associate professor of English at the University of Massachusetts. His stories have appeared in *New American Review*, *Malahat Review*, *Antioch Review*, *Kenyon Review*, *Atlantic Monthly*. Has been a Yaddo Fellow and writer-in-residence at Amherst College. Has published a novel *The Travelers* (1965).

SMALL MOMENTS

Nancy Huddleston Packer. Associate professor of English at Stanford University. Her stories have appeared in *Harper's*, *Kenyon Review*, *Southwest Review*, *Yale Review*, and *Ararat*, and in textbooks and anthologies. Co-edited with Wallace E. Stegner and Richard P. Scowcroft the *Stanford Short Stories 1962*, *Stanford Short Stories 1963*, and *Twenty Years of Stanford Stories* (1968). Her story "Early Morning, Lonely Ride" was included in *Best American Short Stories* (1968) and in *Prize Stories 1969: The O. Henry Awards*.



UNIVERSITY OF ILLINOIS PRESS Urbana, Illinois 61801

September 1976 Directory

PMIA

*Publications of the
Modern Language Association of America*

Volume 91

Number 4

PUBLISHED SIX TIMES A YEAR BY THE ASSOCIATION

The Modern Language Association of America

ORGANIZED 1883

INCORPORATED 1900

OFFICERS FOR THE YEAR 1976

President: NORTHROP FRYE
University of Toronto

First Vice-President: EDITH KERN
Smith College

Second Vice-President: WALTER J. ONG, S.J.
St. Louis University

Executive Director: WILLIAM D. SCHAEFER
Deputy Executive Director: HANS RÜTIMANN

EXECUTIVE COUNCIL

For the term ending 31 December 1976

WAYNE C. BOOTH
University of Chicago

GENEVIÈVE DELATTRE
University of California, Santa Barbara

JOAN WEBBER
University of Washington

For the term ending 31 December 1978

SIDONIE CASSIRER
Mount Holyoke College

RUTH S. EL SAFFAR
University of Illinois, Chicago Circle

EDWARD WASIOLEK
University of Chicago

For the term ending 31 December 1977

MARY ANN CAWS
Hunter College, City University of New York

STANLEY B. GREENFIELD
University of Oregon

THEODORE J. ZIOLKOWSKI
Princeton University

For the term ending 31 December 1979

DAVID J. DELAURA
University of Pennsylvania

CAROLYN G. HEILBRUN
Columbia University

RONALD PAULSON
Yale University

TRUSTEES OF INVESTED FUNDS

GORDON N. RAY
Guggenheim Foundation, Managing Trustee

C. WALLER BARRETT
Charlottesville, Virginia

ROBERT LUMIANSKY
American Council of Learned Societies

PMLA is issued six times a year, in January, March, May, September, October, and November, by the Modern Language Association of America, 62 Fifth Avenue, New York, New York 10011. Membership is open to those persons who are professionally interested in the modern languages and literatures. Annual dues, which include subscription to *PMLA*, are based on members' salaries and are graduated as follows: student members, \$10; unemployed regular members, \$10; regular members (first 2 years), \$20; regular members (salary under \$12,000), \$25; regular members (salary \$12,000–\$18,000), \$30; regular members (salary over \$18,000), \$35; joint members (with only 1 subscription to *PMLA*), \$45; foreign members, same as regular members.

The subscription price of *PMLA* for libraries and other institutions is \$30. A subscription including a bound volume at the end of the year is \$45, domestic and foreign. Agents deduct 10% as their fee. Single copies of the January, March, May, and October issues may be obtained for \$5 each; the November Program issue for \$10; the September Directory issue for \$15.

Issues for the current year are available from the MLA Publications Center. Claims for undelivered issues will be honored if they are received within one year of the publication date; thereafter the single issue price will be charged.

For information about the availability of back issues, inquire of Kraus Reprint Co., Millwood, N. Y. 10546; (914) 762-2200. Early and current volumes may be obtained on microfilm from University Microfilms, Ann Arbor, Mich. 48106. Purchase of current volumes on film is restricted to subscribers of the journal.

OFFICE OF PUBLICATION AND EDITORIAL OFFICES
62 Fifth Avenue, New York, N. Y. 10011 *Tel.*: 212 741-5588

All communications, including notices of changes of address, should be sent to the Membership Office of the Association at 62 Fifth Avenue, New York, N. Y. 10011. If a change of address also involves a change of institutional affiliation, the Membership Office should be informed of this fact at the same time.

Second-class postage paid at New York, N. Y., and at additional mailing office.
Copyright © 1976 by The Modern Language Association of America.
Library of Congress Catalog Card Number 12-32040.

PRINTED IN THE UNITED STATES OF AMERICA BY THE GEORGE BANTA COMPANY, INC., MENASHA, WISCONSIN

Contents • September

Presidents of the Association, 1884–1976	524
Members of the Executive Council.	524
MLA Delegate Assembly	525
Committees and Commissions of the Association	527
MLA Headquarters Staff	530
MLA Statistics	531
Distribution of MLA Members.	532
Reports of the Regional Modern Language Associations	533
Constitution of the Modern Language Association of America.	539
Honorary Members of the Modern Language Association of America	544
Honorary Fellows of the Modern Language Association of America	545
List of Members	546
Necrology.	674
English and Foreign Language Department Chairmen, 1976–77	
Four-Year Colleges and Universities	676
Junior and Community Colleges.	696
Chairmen and Directors of Ethnic Studies Programs	707
Chairmen of Language and Area Programs	709
Women’s Studies Programs	712
Fellowships and Grants	714
Forthcoming Meetings and Conferences of General Interest	726
Professional Notes and Comment	730
Directory of Useful Addresses, 1976–77	776