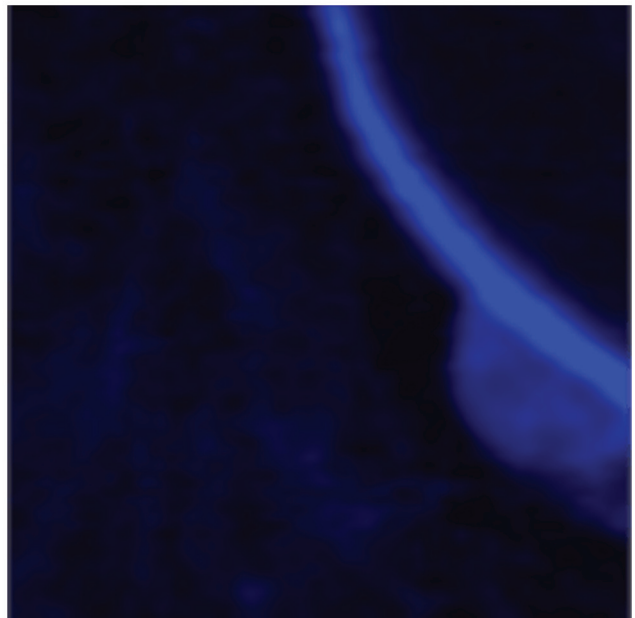
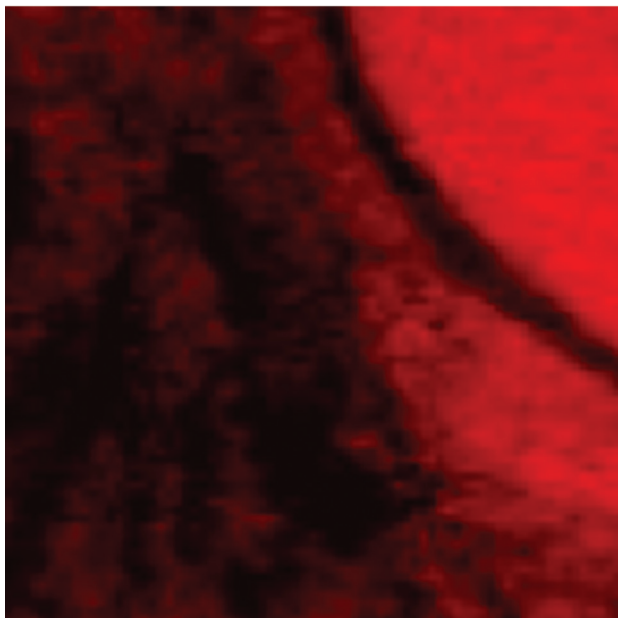
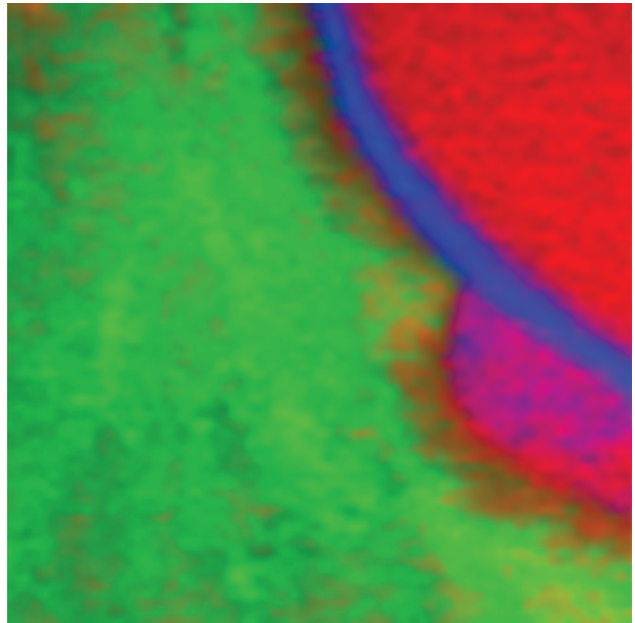
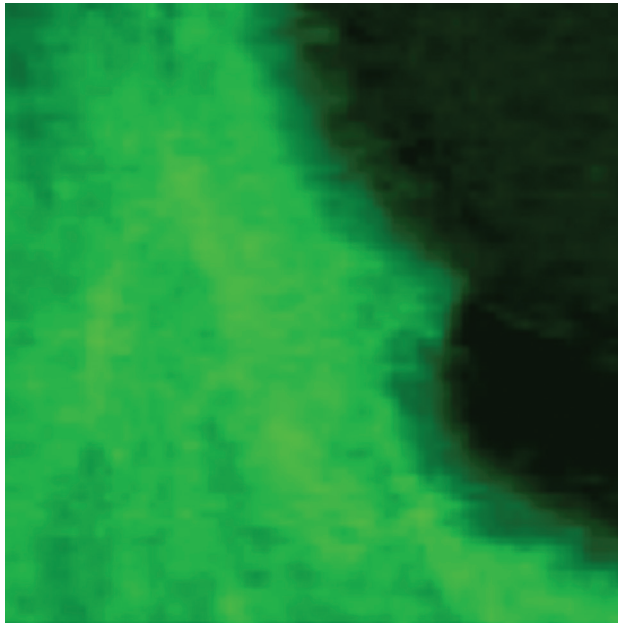


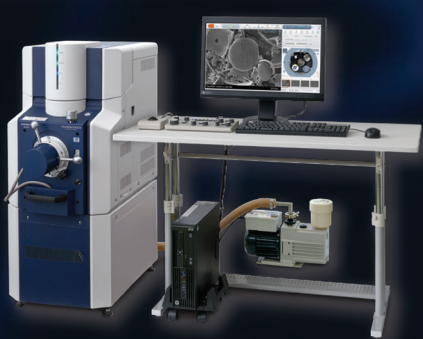
Microscopy TODAY

Volume 27 Number 2 2019 March



Explore Hitachi's Small-Footprint Microscopy Solutions

Product demos available during 2019 MRS Spring Meeting & Exhibit
(April 22-26, 2019, Phoenix, Arizona)



FlexSEM 1000 II
Variable-Pressure SEM



TM4000 Series
Tabletop SEM



AFM5100N
General-Purpose SPM

From benchtop models to 300 kV TEMs, Hitachi offers a wide range of microscopy solutions that meet diverse needs of today's labs. Explore Hitachi's compact microscopes, including small-footprint SEMs and benchtop AFMs, that provide performance equivalent to that of full-sized instruments. Fitting in any corner of your lab, these small but finest instruments come with intuitive user-interface, superior adaptability, and Hitachi's proven reliability. Inquire for more details of these products by emailing at microscopy@hitachi-hita.com.

Innovation ♦ Synergy ♦ Solutions

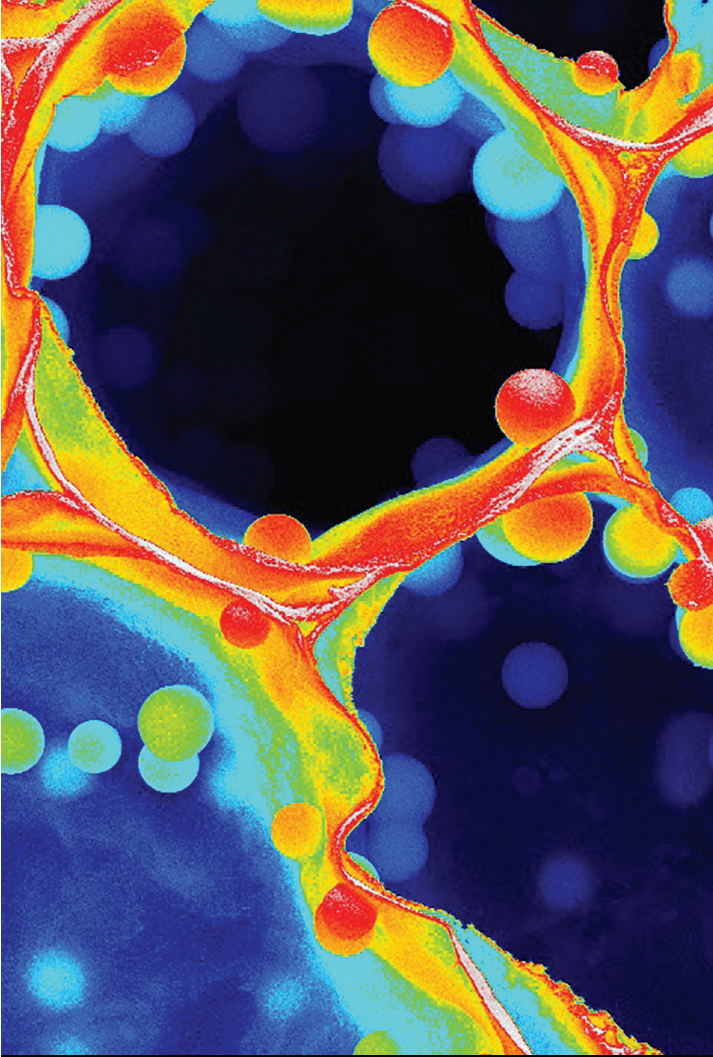


Science for a better tomorrow

Hitachi High Technologies America, Inc.

www.hitachi-hightech.com/us Tel. 800-253-3053 E-mail: microscopy@hitachi-hita.com

© 2019 Hitachi High Technologies America, Inc. All rights reserved.



M&M 2019 MICROSCOPY & MICROANALYSIS

August 4-8 • Portland, OR



Register Now

Early Bird Savings Deadline: **June 24**

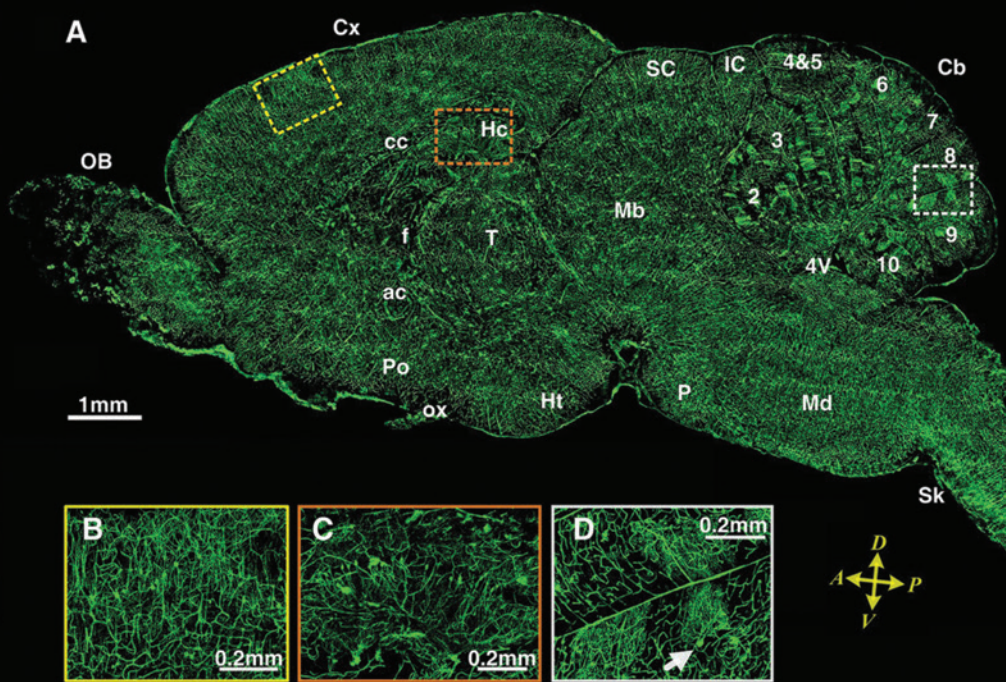
Image: Timothy Pegg | Miami University of Ohio | Motley Spheres SLASH Prismatic Spheres



www.microscopy.org/MandM/2019
for up-to-date meeting information



YOU'LL FIND **DiATOME** AT THE FOREFRONT OF **INNOVATION...**



Creating a High Resolution Atlas of the Mouse Brain...

(A) A sagittal image reconstructed from a stack of 100 virtual sagittal sections (total thickness of 0.1 mm). These sections were transformed from the original coronal sections. The sagittal image was located in the right hemisphere about 0.4 mm lateral to the middle. Almost all major regions of the brain can be seen in this image, e.g., the Olfactory Bulb (OB), Cerebral Cortex (Cx), Hippocampus (Hc), Fornix(f), Anterior Commissure (ac), Thalamus (T), Cerebellum (Cb), Midbrain (Mb), Pons (P), Medulla (Md), Corpus Callosum (cc), Superior Colliculus (SC), Inferior Colliculus (IC), Hypothalamus (Ht), Preoptic Area (Po), Optic Chiasm (ox), 4th ventricle (4V) and nine lobules of the cerebellum (Arabic numerals, 2 to 10). The three regions inside the different colored rectangle in (A) are the positions of (B), (C) and (D), which illustrate the cerebral cortex, hippocampus and cerebellum, respectively. In the reconstruction of sagittal image, no dislocation was observed along the D-V axis, i.e., the coronal sections are inherently aligned along the A-P axis.

DiATOME QUALITY AND INNOVATION APPLIED...

Micro-Optical Sectioning Tomography to Obtain a High-Resolution Atlas of the Mouse Brain

Existing imaging tools have limitations for brainwide mapping of neural circuits at a mesoscale level. In collaboration with DiATOME, researchers developed a Micro-Optical Sectioning Tomography (MOST) system utilizing a DiATOME Diamond Knife that can provide micron tomography of a centimeter-sized whole mouse brain.

Slicing was performed by moving the specimen to generate ribbons, and each ribbon was simultaneously imaged. The illuminating beam passed through a beam splitter, mirror and objective to irradiate the ribbon. The imaging beam collected by the objective and passed through the mirror, beam splitter and tube lens was then recorded by a line-scan CCD.

A 3D structural dataset of a Golgi-stained whole mouse brain at the neurite level was obtained. The morphology and spatial locations of neurons and traces of neurites were clearly distinguished. Researchers found that neighboring Purkinje cells were sticking to each other.

Acknowledgement

Micro-Optical Sectioning Tomography to Obtain a High-Resolution Atlas of the Mouse Brain Anan Li, Hui Gong, Bin Zhang, Qingdi Wang, Cheng Yan, Jingpeng Wu, Qian Liu, Shaoqun Zeng, Qingming Luo

Britton Chance Center for Biomedical Photonics, Wuhan National Laboratory for Optoelectronics—Huazhong University of Science and Technology, Wuhan 430074, P. R. China.

ACHIEVE **CUTTING EDGE** RESULTS WITH **DiATOME DIAMOND KNIVES**

PLEASE CONTACT US FOR MORE INFORMATION...

DiATOME U.S.

P.O. Box 550 • 1560 Industry Rd.

Hatfield, PA 19440

Tel: (215) 412-8390 • Fax: (215) 412-8450

email: info@emsdiasum.com

or stacie@ems-secure.com

www.emsdiasum.com

follow us on...



Contents

Microanalysis

12 Correlative Spectromicroscopy and Tomography for Biomedical Applications Involving Electron, Ion, and Soft X-ray Microscopies

Adam P. Hitchcock, Xiaoyue Wang, Kathryn Grandfield, James Everett, Joanna F. Collingwood, and Neil D. Telling

Biological Applications

20 Cryo-Planing Biological Specimens for Scanning Electron Microscopy

William C. Plumley, Michael Kostrna, and Steven L. Goodman

Cloud Computing in Microscopy

26 Management, Analysis, and Simulation of Micrographs with Cloud Computing

Shawn Zhang, Alan P. Byrnes, Jasna Jankovic, and Joseph Neilly

Microscopy Education

34 Outreach to Students at the 19th International Microscopy Congress

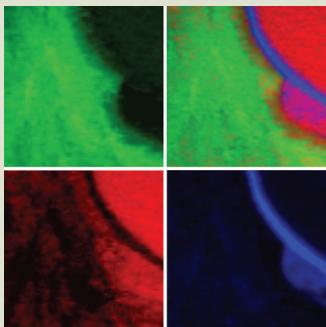
Benjamin Pace

Microscopy Pioneers

40 Pioneers in Optics: Jean-Baptiste Biot

Eric Clark

About the Cover



Scanning transmission X-ray microscopy composition maps of a dental implant–bone interface. Counterclockwise from upper left: bone (green), implant (red), TiNx layer at interface (blue), and a composite map. Image width = 4 μm .

See article by Hitchcock et al.

Departments

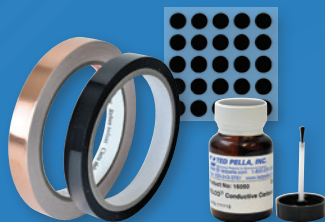
- 7 Editorial**
- 8 Carmichael's Concise Review**
- 42 Industry News**
- 44 Product News**

- 46 NetNotes**
- 48 Calendar of Meetings**
- 53 Dear Abbe**
- 54 Index of Advertisers**



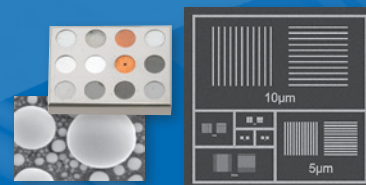
Providing microscopy supplies and specimen preparation equipment to our valued customers for over half a century.

Visit us April 22–26 in Phoenix, AZ
MRS SPRING 2019



Adhesives

Conductive Tape, Carbon Tabs
 Carbon, Silver & Gold



Calibration Standards,

Pelcotec™ CDMS-XY, Magnification,
 Resolution, LM/SEM/FESEM

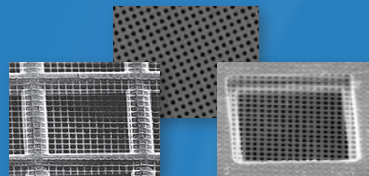


**NEW Products for Specimen
 Thinning in Preparation for
 Electron Microscopy**



Tools for Microscopy

Tweezers, Scribes, Vacuum Pick-Up



**NEW Quantifoil®
 TEM Substrates**



**PELCO® Modular SEM
 Holders & Mounts**



FIB Supplies

Lift Out Grids, Storage,
 Probes, FIB Mounts



Cressington Coating Systems
 Carbon Evaporation & Metal Sputtering



**NEW PELCO® Video
 Alignment Microscope**



PELCO® AFM Tools & Supplies
 AFM Discs, Disc Carriers, AFM Probes,
 Disk dispenser, Disc Grippers & Pickup Tools



www.tedpella.com sales@tedpella.com 800-237-3526