



Effects of dairy products, calcium and vitamin D on ovarian cancer risk: a meta-analysis of twenty-nine epidemiological studies

Min-Qi Liao^{1†}, Xu-Ping Gao^{1,2†}, Xiao-Xuan Yu¹, Yu-Fei Zeng³, Shu-Na Li¹, Nalen Naicker⁴, Tanya Joseph⁴, Wen-Ting Cao⁵, Yan-Hua Liu⁶, Sui Zhu⁷, Qing-Shan Chen¹, Zhi-Cong Yang^{8*} and Fang-Fang Zeng^{1*}

¹Department of Epidemiology, School of Medicine, Jinan University, No. 601 Huangpu Road West, Guangzhou 510632, Guangdong, People's Republic of China

²Department of Child & Adolescent Psychiatry, Peking University Sixth Hospital (Institute of Mental Health), National Clinical Research Center for Mental Disorders & Key Laboratory of Mental Health, Ministry of Health (Peking University), No. 51 Huayuan Bei Road, Beijing 100191, People's Republic of China

³Department of Obstetrics and Gynecology, Shangrao Fifth People's Hospital, Shangrao 334000, Jiangxi, People's Republic of China

⁴International School, Jinan University, No. 601 Huangpu Road West, Guangzhou 510632, Guangdong, People's Republic of China

⁵Department of Medical Statistics & Epidemiology, School of Public Health, Hainan Medical University, Haikou 571199, People's Republic of China

⁶The First Affiliated Hospital of Zhengzhou University, No. 1 East Jianshe Road, Zhengzhou 450052, Henan, People's Republic of China

⁷Department of Medical Statistics, School of Medicine, Jinan University, No. 601 Huangpu Road West, Guangzhou 510632, Guangdong, People's Republic of China

⁸Guangzhou Center for Disease Control and Prevention, No. 1 Qi De Road, Guangzhou 510440, Guangdong, People's Republic of China

(Submitted 22 June 2019 – Final revision received 20 February 2020 – Accepted 9 March 2020 – First published online 19 March 2020)

Abstract

Findings for the roles of dairy products, Ca and vitamin D on ovarian cancer risk remain controversial. We aimed to assess these associations by using an updated meta-analysis. Five electronic databases (e.g. PubMed and Embase) were searched from inception to 24 December 2019. Pooled relative risks (RR) with 95 % CI were calculated. A total of twenty-nine case-control or cohort studies were included. For comparisons of the highest *v.* lowest intakes, higher whole milk intake was associated with increased ovarian cancer risk (RR 1.35; 95 % CI 1.15, 1.59), whereas decreased risks were observed for higher intakes of low-fat milk (RR 0.84; 95 % CI 0.73, 0.96), dietary Ca (RR 0.71; 95 % CI 0.60, 0.84) and dietary vitamin D (RR 0.80; 95 % CI 0.67, 0.95). Additionally, for every 100 g/d increment, increased ovarian cancer risks were found for total dairy products (RR 1.03; 95 % CI 1.01, 1.04) and for whole milk (RR 1.07; 95 % CI 1.03, 1.11); however, decreased risks were found for 100 g/d increased intakes of low-fat milk (RR 0.95; 95 % CI 0.91, 0.99), cheese (RR 0.87; 95 % CI 0.76, 0.98), dietary Ca (RR 0.96; 95 % CI 0.95, 0.98), total Ca (RR 0.98; 95 % CI 0.97, 0.99), dietary vitamin D (RR 0.92; 95 % CI 0.87, 0.97) and increased levels of circulating vitamin D (RR 0.84; 95 % CI 0.72, 0.97). These results show that whole milk intake might contribute to a higher ovarian cancer risk, whereas low-fat milk, dietary Ca and dietary vitamin D might reduce the risk.

Key words: Dairy products: Calcium: Vitamin D: Ovarian cancer: Meta-analyses

Ovarian cancer is one of the most common types of cancer occurring in females, accounting for 2.5 % of all malignancies among them. In 2018, 295 414 new cases and 184 799 deaths by ovarian cancer were reported worldwide⁽¹⁾. Of all the gynaecological malignancies, this cancer is associated with the worst

prognosis⁽²⁾. Ovarian cancer in approximately 75 % of the recently confirmed cases has already reached the advanced stage of the disease, with a 5-year survival rate of only 63.8 %⁽³⁾. Thus, identifying modifiable risk factors to guide interventions in preventing ovarian cancer is essential. In addition to

Abbreviations: NOS, Newcastle–Ottawa Scale; RR, relative risk; WCRF/AICR, World Cancer Research Fund/American Institute for Cancer Research.

* **Corresponding authors:** Fang-Fang Zeng, fax +86 208 5221343, email zengffjnu@126.com; Zhi-Cong Yang, fax + 86 203 6055885, email yangzcgzcdc.org.cn

† These authors contributed equally to this work.

confirmed factors such as genetic, hormonal and reproductive factors, a range of modifiable risk factors (e.g. dietary or nutritional factors) have been proposed to play vital roles in the aetiology of this disease⁽⁴⁾.

Dairy products, which are abundant in nutrients such as protein, Ca and vitamins, have been listed as a core part of dietary recommendations globally⁽⁵⁾. This is mainly due to their beneficial effects on bone health and potential protection against various diseases such as type 2 diabetes mellitus, CVD (e.g. stroke and CHD) and cancers (e.g. colorectal cancer and bladder cancer)^(6,7). Although dairy nutrients, such as Ca and vitamin D, exhibit anti-tumorigenic effects by regulating the risk of multiple cancers and prognosis-relevant pathways, such as tumorigenic pathways in ovarian cancer⁽⁸⁾, other nutrient-related factors such as the serum insulin-like growth factor 1 and hormones (e.g. oestrogen and progesterone) in dairy products may increase cancer risk by promoting cell proliferation and inhibiting apoptosis or inducing the malignant transformation of ovarian epithelial cells^(9,10).

Previous epidemiological studies of the associations between dairy products or their sub-types and ovarian cancer risk have yielded inconsistent results. The Continuous Update Project of 2018 by the World Cancer Research Fund/American Institute for Cancer Research (WCRF/AICR) assessed the effects of diet, nutrition and other factors with ovarian cancer consisted of pooling evidence from 2006 to 2012⁽¹¹⁾. The evidence indicated null effects of total dairy products, whole milk, cheese, yogurt, lactose, serum vitamin D, and total and dietary Ca, with ovarian cancer risk, which were in line with the results of previous two meta-analyses^(12,13). However, high dairy products, low-fat milk and lactose intakes have been reported to be associated with increased ovarian cancer risk in a meta-analysis⁽¹⁴⁾, and the protective effect of Ca had been reported in other meta-analysis⁽¹⁵⁾. The relatively small number of included studies by two meta-analyses^(13,14) published in 2006 might restrain their statistical power. In addition, in the meta-analysis by Liu *et al.*⁽¹²⁾, the data for low-fat milk and skimmed milk were mixed together, which might ignore the potential role of the remaining dairy fat components in low-fat milk. Furthermore, a systematic review⁽¹⁶⁾ showed inconclusive results regarding the relationship between vitamin D and ovarian cancer. Previous meta-analyses also seldom further assessed whether the observed relationship between increasing (or decreasing) levels of dairy products or Ca and the ovarian cancer risk follows a linear dose-response pattern.

Thus, we conducted an updated meta-analysis to explore the relationships between the intakes of different types of dairy products, Ca and vitamin D, as well as circulating vitamin D, with ovarian cancer risk. We further assessed whether there were dose-response relationships among these associations.

Methods

Search strategy

For studies investigating the associations between dairy products, dietary or circulating Ca and vitamin D with ovarian cancer risk, initial works of literature were systematically searched in

PubMed, Embase, Web of Science, Cochrane Library and ClinicalTrials.gov in 7 July 2018 and updated in 24 December 2019. No restrictions for language and time of publish were imposed. Moreover, the reference lists from recovered articles and published meta-analyses or systematic reviews were subjected to manual searches to identify relevant studies further. Full texts of potentially applicable investigations were obtained, whereas abstracts, meeting proceedings, gray literature, unpublished results and personal communications were excluded. Details of the searching strategy are shown in the online Supplementary Materials.

Study selection

Studies were eligible for inclusion if they (1) applied a case-control and cohort studies, or clinical trial design and were published as original studies; (2) assessed at least one of the following exposures or interventions: dairy products, Ca or vitamin D; (3) used ovarian cancer as an outcome and (4) provided at least two groups of relative risks (RR) or OR and 95% CI across different categories or could estimate these data by number of cancer cases and population at risk (or controls). To avoid overlap between study populations, we included studies with the largest sample size when studies on the same topic were performed among the same populations. As several studies lacked detailed information on the weight of the average dietary intake, we calculated the approximate estimates based on the frequency of intake and on the algorithms that assigned a nutrient score to each food item (online Supplementary Table S1). The nutrient score was evaluated using data derived by the United States Department of Agriculture (<http://ndb.nal.usda.gov/ndb/search/list>).

Data extraction

The titles and abstracts of the initially retrieved articles were independently screened by two investigators (L. M. Q. and G. X. P.). Disagreements between the two authors will be solved through discussion with the corresponding author (Z. F. F.) to reach a consensus. The following data from each eligible study were extracted: the first author, publication year, country of the study, study name, study design, characteristics of the study population, follow-up period, sample size, race, age, number of cases, diet assessment methods, type of dairy products, vitamin D and Ca sources, quantity of intake, maximally adjusted OR or RR with 95% CI and adjusted covariates.

Quality assessment

The Newcastle-Ottawa Scale (NOS) was used to assess the quality of the included original studies with a case-control or cohort study design⁽¹⁷⁾. For case-control studies, the three main quality parameters assessed by the NOS are the qualities of selection (four items), comparability (one item) and exposure (three items). For cohort studies, they are the qualities of selection (four items), comparability (one item) and outcome (three items). Each item in the 'selection' and 'exposure/outcome' parameters can obtain 0 or 1 star, whereas those in the 'comparability' parameter can receive 0-2 stars, and one star equals 1



point. The total score for both study design ranges from 0 to 9, with a higher score indicating higher methodological quality. The same two authors assessed the study quality. Disagreements between authors were resolved by discussion, as well as consulting with the corresponding authors (Z. F. F.).

Statistical analysis

For this meta-analysis, because the incidence of ovarian cancer was low, we assumed that the estimates of OR from case-control studies were good approximations of RR from cohort studies and both were validly combined as the estimates of RR⁽¹⁸⁾. The random effects model was chosen *a priori* for the estimations of pooled RR and 95 % CI as it is considered as more conservative than the fixed effects model when within- and between-study heterogeneities are anticipated⁽¹⁹⁾.

The maximally adjusted RR, comparing the highest intake category with the lowest intake category (the reference group), were combined to generate the summary associations. One study⁽²⁰⁾ used a different reference group rather than the lowest one, so an excel macro file was used to transform this reference group⁽²¹⁾. Cochran's *Q* test and Higgins *I*² values were used to assess the heterogeneity between studies (*I*² > 50 % or *P*_{for heterogeneity} < 0.05 indicated significant heterogeneity)⁽²²⁾.

For dose-response meta-analysis, the methods proposed by Greenland & Longnecker⁽²³⁾ and Orsini *et al.*⁽²⁴⁾ were used to compute study-specific slopes, which were obtained by correlating the natural logarithm of the RR across exposure categories and estimate the dose-response associations. For those included in the dose-response analyses, studies should provide the mean or median value as cut-off for each category, the number of cases, the number of controls (case-control and cohort) or person-years (cohort only) and the estimated risks for at least three quantitative categories⁽²⁵⁾. The median level of intake or circulating concentration for each category was assigned to each corresponding RR. For eighteen studies that did not provide the median or mean value for each category, the median was estimated using the midpoint of the lower and upper limits and we considered that the highest/lowest category had the same intake or concentration range as the adjacent category when the highest/lowest category was open-ended^(26,27).

Subgroup and meta-regression analyses were performed to investigate potential sources of between-study heterogeneity. Subgroup analyses were performed according to the publication year (<2009 *v.* ≥2009), study design (case-control study *v.* cohort study), age (<55 *v.* ≥55 years) and NOS score (<7 *v.* ≥7 points). When the *P* value for the covariate interaction terms was < 0.05, the statistical significance was inferred for the subgroup effect. Meta-regression analyses were also performed to assess the covariates that may affect between-study heterogeneity. Influence analysis was performed by recalculating the pooled estimates for each dairy product category or nutrient after omitting one study with an extreme result at a time to validate the robustness of the findings. Publication bias for analyses with ten or more included studies was detected using Egger's and Begg's linear regression asymmetry tests and was visualised using the funnel plot⁽²⁸⁾. All of the data were analysed using the

Stata software (version 11.0, StataCorp LP). A two-sided *P* < 0.05 was considered statistically significant.

Results

A total of 5583 records were identified in the initial search, and 895 were removed due to duplicate publications. A further 4688 and fifty-one articles were excluded after a title, abstract review and full-text review. Of the remaining seventy-six potentially eligible articles, twenty-six were further excluded for duplicate data sets and twenty-one for insufficient data. To ensure that the meta-analysis was based on up-to-date results, we updated the literature search on 24 December 2019, but no eligible article was included (Fig. 1; online Supplementary Table S2). Finally, twenty-nine studies, including eighteen case-control studies (9443 cases and 19 650 controls) and eleven cohort/nested case-control studies (934 511 participants and 3500 cases), were included in our analysis (Fig. 1). Of these twenty-nine studies, twenty-three⁽²⁹⁻⁵¹⁾ evaluated the associations between ovarian cancer and dairy products/lactose, thirteen^(36,37,40,42-44,46,47,49,51-54) assessed Ca and ten^(20,35,46,47,49,51-53,55,56) focused on vitamin D.

The details of the included studies are summarised in Table 1 and online Supplementary Table S3. Overall, nineteen studies involved Caucasian populations, one involved an Asian population, one involved a Black population and eight involved mixed populations. The means for age ranged from 29.9 to 65.0 years in case-control studies and from 42.5 to 62.0 years in cohort studies. Dietary intake or circulating levels were estimated using a validated FFQ in twenty studies, using some single or multiple standard questionnaires in six studies and using specialised assays (25-hydroxyvitamin D (25(OH)D) RIA and DiaSorin LIAISON vitamin D TOTAL assay) in three studies. The NOS scores of all the included studies were ≥4, and nineteen of these studies scored ≥7 (online Supplementary Tables S4 and S5).

Dairy products

In comparative analyses between the highest and lowest intake, a null association was observed between the consumption of total dairy products and ovarian cancer risk and the RR and its 95 % CI were 1.10 (95 % CI 0.95, 1.28; *P* = 0.203) with moderate heterogeneity (*I*² = 52.3 %) (Table 2; Fig. 2). A comparison between specific type of dairy products revealed that women with a higher intake of whole milk had an increased ovarian cancer risk (RR 1.35, 95 % CI 1.15, 1.59; *P* < 0.001), whereas those with a higher intake of low-fat milk had a decreased risk (RR 0.84, 95 % CI 0.73, 0.96; *P* = 0.013). No evident association was found for skimmed milk, yogurt, cheese or lactose (*P* range: 0.203-0.993) (Table 2; online Supplementary Figs. S1 and S2).

In dose-response analyses, significantly increased ovarian cancer risk was observed for 100 g/d increments in total dairy product (RR 1.03, 95 % CI 1.01, 1.04; *P* = 0.004) and in whole milk (RR 1.07, 95 % CI 1.03, 1.11; *P* < 0.001) (Table 3; Fig. 3). In contrast, decreased risk was observed for 100 g/d increments in low-fat milk (RR 0.95, 95 % CI 0.91, 0.99; *P* = 0.007) and cheese intakes (RR 0.87, 95 % CI 0.76, 0.98; *P* = 0.025) (Table 3; Fig. 3; online Supplementary Fig. 3).

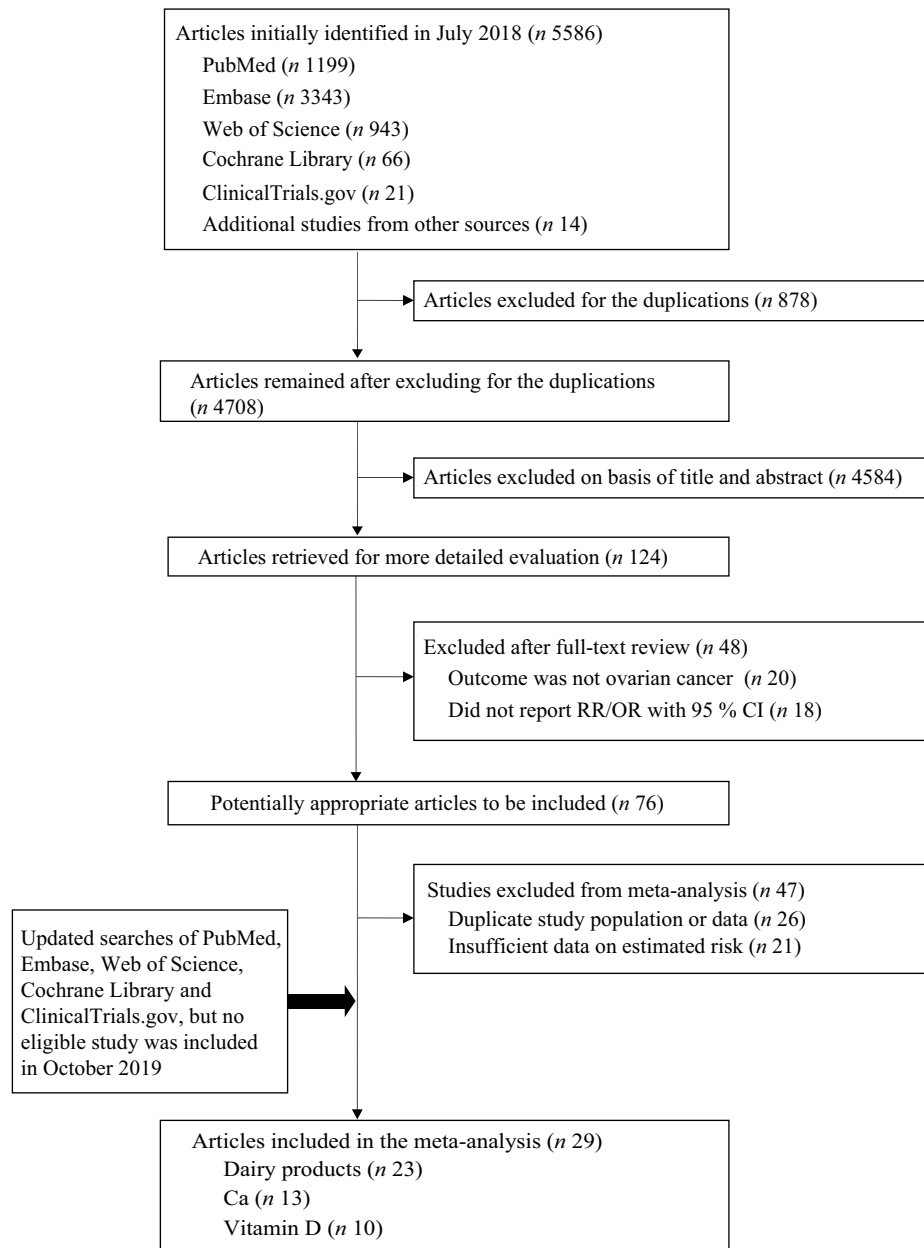


Fig. 1. Flow chart of the study selection. RR, relative risk.

No significant association was found for skimmed milk, yogurt or lactose in either of the two models (*P* values for highest *v.* lowest intake: 0.792, 0.568 and 0.852; *P*_{for 100 g/d increments}: 0.178, 0.055 and 0.722) (Tables 2 and 3).

Total, dietary and circulating calcium and vitamin D

As some studies not specify if the total Ca/vitamin D intakes were calculated from food or supplement sources, ‘total Ca’ and ‘total vitamin D’ in the present study referred to the combined intakes from both sources. The cut-off values of the highest categories ranged from 1127.0 to 1596.0 mg/d for total Ca and 859.3 to 1025.0 mg/d for dietary Ca. Compared with the lowest intake group, participants in the highest dietary Ca intake group exhibited a significantly decreased ovarian cancer risk (RR 0.71, 95 %

CI 0.60, 0.84; *P* < 0.001) (Table 2; online Supplementary Fig. S4). Supplemental Ca intake was associated with only marginally decreased ovarian cancer risk (RR 0.81, 95 % CI 0.65, 1.01; *P* = 0.062), whereas null association was observed between total Ca intake and the ovarian cancer risk (RR 0.85; *P* = 0.253) (Table 2). In addition, dietary vitamin D intake was found to be negatively associated with ovarian cancer risk (RR 0.80, 95 % CI 0.67, 0.95; *P* = 0.011) (Table 2). However, pooling of all studies yielded no significant finding for total or circulating vitamin D (both *P* > 0.05) (Table 2; online Supplementary Fig. S5).

For dose–response associations, we found that significantly decreased ovarian cancer risks were related with 100 g/d increments in dietary Ca (RR 0.96, 95 % CI 0.95, 0.98), total Ca

Table 1. Main characteristics of the eligible studies included in the meta-analysis

Authors	Year	Follow-up (months)	Location	Race	Age (years)	n (cases)	n (controls)	NOS score	Exposure types
Case-control studies									
La Vecchia <i>et al.</i> ⁽²⁹⁾	1987	–	Italy	Caucasian	54.5	455	1385	8	A1
Mettlin & Piver ⁽³⁰⁾	1990	–	USA	Caucasian	55.8	303	606	6	A1
Engle <i>et al.</i> ⁽³¹⁾	1991	–	USA	Mixed	NA	71	141	5	A1, A2
Risch <i>et al.</i> ⁽³²⁾	1994	–	Canada	Mixed	57.4	450	564	6	A1, A2
Webb <i>et al.</i> ⁽³³⁾	1998	–	Australia	Caucasian	NA	107	277	8	A1, A2
Bertone <i>et al.</i> ⁽³⁴⁾	2001	–	USA	Caucasian	54.8	327	3129	8	A1
Bosetti <i>et al.</i> ⁽³⁵⁾	2001	–	Italy	Caucasian	56.5	1031	2411	7	A1, B2, C2
Bidoli <i>et al.</i> ⁽⁵²⁾	2001	–	Italy	Caucasian	56.5	1031	2411	8	B2, C2
Cramer <i>et al.</i> ⁽⁵⁵⁾	2001	–	USA	Caucasian	NA	549	516	6	C2
Goodman <i>et al.</i> ⁽³⁶⁾	2002	–	USA	Mixed	54.8	558	607	8	A1, A2, B2, B3, B4
Salazar-Martinez <i>et al.</i> ⁽³⁷⁾	2002	–	Mexico	Caucasian	53.5	84	629	6	A1, A2
Zhang <i>et al.</i> ⁽³⁸⁾	2002	–	China	Asian	NA	254	652	6	A1
McCann <i>et al.</i> ⁽³⁹⁾	2003	–	USA	Caucasian	57.4	124	696	5	A1
Pan <i>et al.</i> ⁽⁴⁰⁾	2004	–	Canada	Caucasian	NA	442	2135	8	A1, B3
Gallus <i>et al.</i> ⁽⁴⁵⁾	2006	–	Italy	Caucasian	56.5	1031	2411	8	A1, A2
Faber <i>et al.</i> ⁽⁴³⁾	2012	–	Danish	Caucasian	65.0	554	1564	7	A1, B1
Merritt <i>et al.</i> ⁽⁴⁴⁾	2013	–	USA	Caucasian	52.5	1909	1989	7	A1, B1, B2
Qin <i>et al.</i> ⁽⁴⁶⁾	2016	–	USA	Black	56.1	490	656	8	A1, A2, B1, B2, B3, C1, C2, C4
Cohort studies									
Kushi <i>et al.</i> ⁽⁴⁷⁾	1999	120*	USA	Caucasian	62.0	139	29 083†	7	A1, A2, B1, C1
Larsson <i>et al.</i> ⁽⁴⁸⁾	2004	162*	Sweden	Caucasian	57.0	391	61 084†	8	A1, A2,
Kiani <i>et al.</i> ⁽⁴¹⁾	2006	108*	USA	Caucasian	61.0	71	4060†	7	A1
Koralek <i>et al.</i> ⁽⁴⁹⁾	2006	168*	USA	Caucasian	NA	146	31 925†	8	A1, A2, B1, B2, B3, C1, C2, C4
Mommers <i>et al.</i> ⁽⁵⁰⁾	2006	135.6*	Netherlands	Caucasian	62.0	282	2406†	9	A1, A2
Chang <i>et al.</i> ⁽⁵¹⁾	2007	99*	USA	Mixed	57.3	280	97 275†	8	B1, C1
Park <i>et al.</i> ⁽⁴²⁾	2009	NA*	USA	Mixed	60.5	515	567 169†	8	A1, B1
Merritt <i>et al.</i> ⁽⁵⁴⁾	2014	336*	USA	Mixed	42.5	764	139 964†	7	A1, A2, B4
Nested case-control studies									
Tworoger <i>et al.</i> ⁽⁵⁶⁾	2007	–	USA	Mixed	55.9	224	603	7	C3
Toriola <i>et al.</i> ⁽⁵³⁾	2010	–	Finland	Caucasian	29.9	172	172	8	B4, C3
Zheng <i>et al.</i> ⁽²⁰⁾	2010	–	USA, Finland, China	Mixed	57.5	516	770	7	C3

A1, dairy products; A2, lactose; B1, total Ca; B2, dietary Ca; B3, supplemental Ca; B4, other Ca; C1, total vitamin D; C2, dietary vitamin D; C3, circulating vitamin D; C4, supplemental vitamin D; Mixed, mixed populations of Caucasian, Black, Asian and other populations; NA, not available; NOS, Newcastle–Ottawa Scale.

* Follow-up period duration (months).

† Person-years.

Table 2. Estimates comparing highest v. lowest group for ovarian cancer risk under different exposure models (Relative risks (RR) and 95 % confidence intervals)

	Case-control studies		Cohort studies		RR	95 % CI	P*	Heterogeneity	
	No. of studies	Participants	No. of studies	Participants				I ² (%)	P†
Total dairy products	11	17 121	6	833 868	1.10	0.95, 1.28	0.203	52.3	0.006
Whole milk	6	10 958	4	23 804	1.35	1.15, 1.59	<0.001	27.9	0.108
Low-fat milk	4	8005	3	176 930	0.84	0.73, 0.96	0.013	0.0	0.662
Skimmed milk	6	12 370	3	32 071	0.97	0.78, 1.21	0.792	49.8	0.052
Yogurt	7	12 379	2	64 163	1.08	0.83, 1.42	0.568	83.6	<0.001
Lactose	8	10 650	4	204 709	1.02	0.84, 1.24	0.852	67.8	0.001
Cheese	8	18 172	4	125 456	1.00	0.85, 1.17	0.993	60.1	0.004
Total Ca intake	3	7162	4	726 532	0.85	0.64, 1.13	0.253	73.2	0.001
Dietary Ca intake	5	10 364	2	599 755	0.71	0.60, 0.84	<0.001	38.6	0.135
Supplemental Ca intake	3	4888	2	599 755	0.81	0.65, 1.01	0.062	41.9	0.142
Total vitamin D intake	3	6209	3	158 848	0.95	0.78, 1.16	0.603	48.8	0.082
Dietary vitamin D intake	5	10 264	1	32 071	0.80	0.67, 0.95	0.011	30.0	0.210
Circulating vitamin D	3	2457‡	0	0	0.92	0.67, 1.27	0.609	0.0	0.407

I², variation in estimated attributable to heterogeneity.

* P value of Z test for the significance of the pool RR and 95 % CI.

† P value of Q test for between-study heterogeneity test.

‡ Analyses of circulating vitamin D were based on three nested case-control studies.

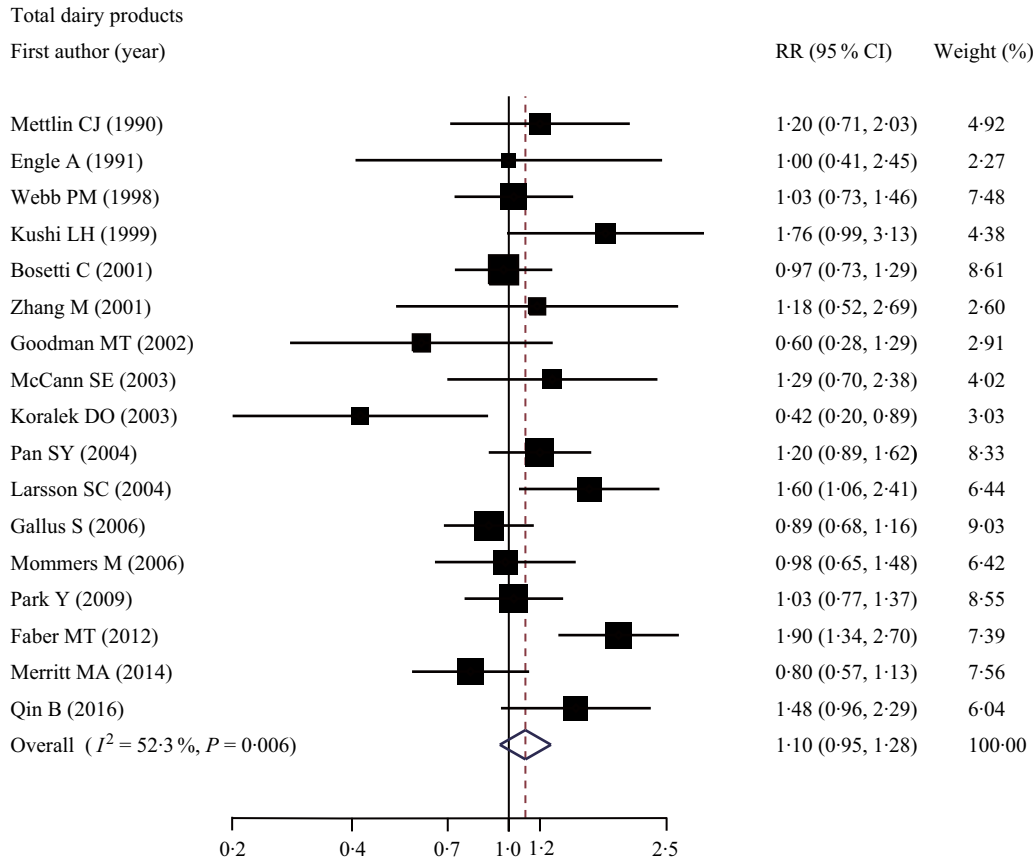


Fig. 2. Forest plots of associations between total dairy products intake and the risk of ovarian cancer; error bars indicate 95 % CI. Weights are from random effects analysis. RR, relative risk.

Table 3. Dose–response relationships between intakes of different exposures and the risk of ovarian cancer (for each 100 g/d increment) (Relative risks (RR) and 95 % confidence intervals)

	Case–control studies		Cohort studies		Goodness-of fit	P^*	RR	95 % CI for each 100 g increase	P^\dagger
	No. of studies	Participants	No. of studies	Participants					
Total dairy products	7	9976	5	2 935 169	62.29	0.018	1.03	1.01, 1.04	0.004
Whole milk	5	9983	4	2 860 785	29.82	0.155	1.07	1.03, 1.11	<0.001
Low-fat milk	4	7396	3	3 234 780	46.10	0.002	0.95	0.91, 0.99	0.007
Skimmed milk	4	7403	3	914 462	29.95	0.038	0.97	0.93, 1.01	0.178
Yogurt	6	11 385	2	846 129	70.04	<0.001	1.07	1.00, 1.14	0.055
Lactose	7	10 522	4	3 126 339	45.91	0.084	0.78	0.87, 1.10	0.722
Cheese	4	8152	5	1 799 068	28.82	0.271	0.87	0.76, 0.98	0.025
Total Ca intake	3	7711	3	9 625 148	24.09	0.152	0.98	0.97, 0.99	0.001
Dietary Ca	3	5757	1	30 591	6.03	0.812	0.96	0.95, 0.98	<0.001
Total vitamin D intake	2	5700	3	9 962 892	8.97	0.880	1.00	0.98, 1.02	0.668
Dietary vitamin D	3	5755	1	245 504	7.65	0.663	0.92	0.87, 0.97	0.002
Circulating vitamin D	3	1809	0	0	16.90	0.077	0.84	0.72, 0.97	0.022

* P value of the test of goodness-of-fitness.

† P value of the RR and 95 % CI of 100 g/d increment.

(RR 0.98, 95 % CI 0.97, 0.99), dietary vitamin D (RR 0.92, 95 % CI 0.87, 0.97) and circulating vitamin D (RR 0.84, 95 % CI 0.72, 0.97) (all P values < 0.05) (Table 3; Fig. 4).

Subgroup and meta-regression analyses

The pooled results on lactose were contradictory between elder and younger women (RR 0.84 *v.* 1.25; $P_{\text{for interaction}}$: 0.040)

(online Supplementary Table S12). However, no significant interaction was observed after stratifying by publication year, study design, age and NOS scores (all $P_{\text{for interaction}} > 0.05$) (online Supplementary Tables S6–S11, S13–S15). Additionally, we did not analyse case–control and cohort studies separately, but we have performed exploratory subgroup analyses by study design (case–control study *v.* cohort study) and found no evidence of effect modification or significant effects on ovarian

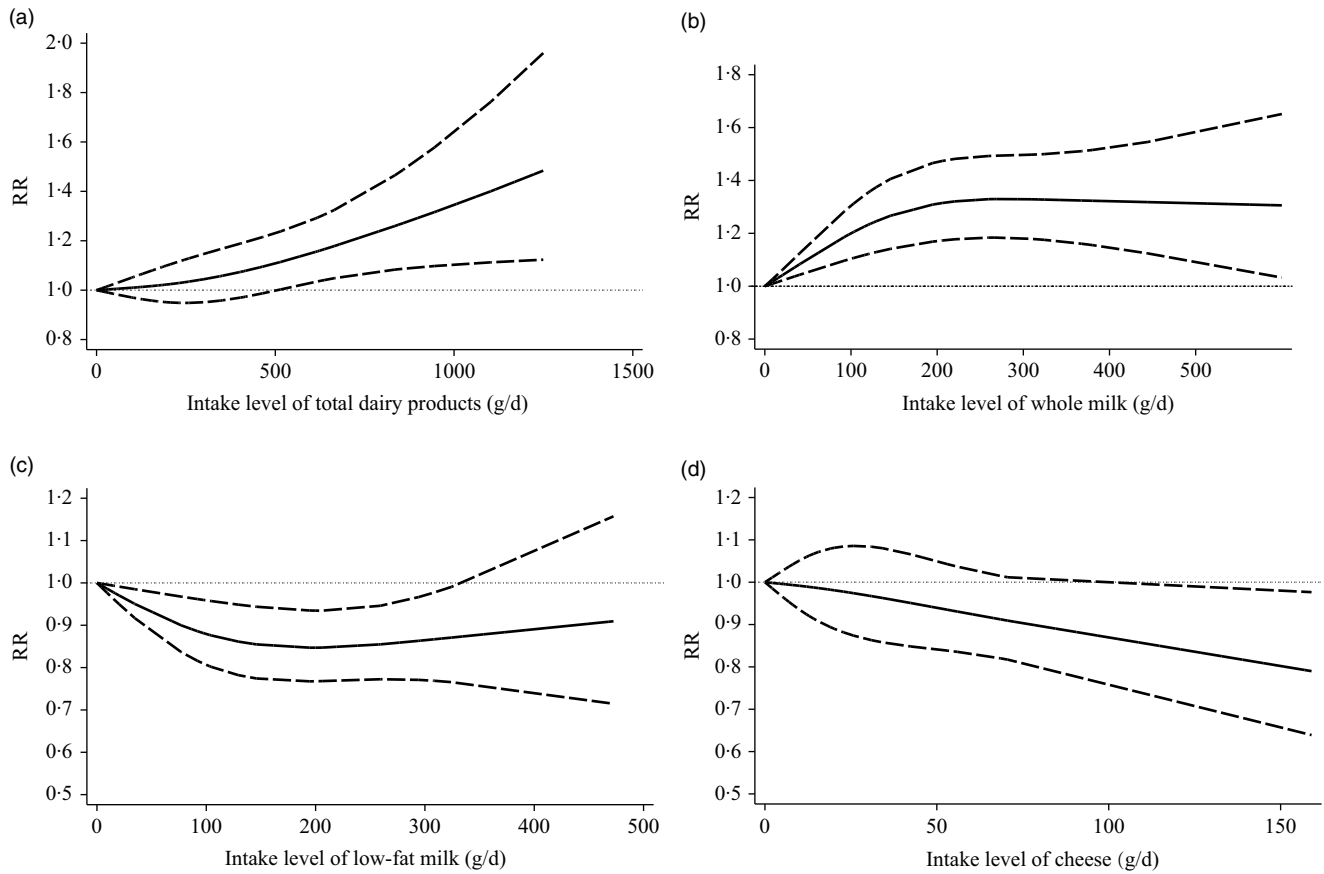


Fig. 3. Dose–response relationships between intakes of total dairy products (a), whole milk (b), low-fat milk (c), as well as cheese (d), and the risk of ovarian cancer. RR, relative risk. (a–d) — Linear model; - - - 95% confidence interval.

cancer within subgroups by study design (all $P_{\text{for interaction}}$ values > 0.05 in each stratified analysis).

Publication year, study design, age and NOS scores were also investigated as potential moderators using meta-regression analysis. The results demonstrated that the NOS scores might contribute to the heterogeneity in the results of whole milk as the included low-quality studies tended to report higher risk ($P: 0.003$), and the result was further demonstrated by meta-regression analysis ($P: 0.025$) (online Supplementary Tables S7 and S17).

In the influence analysis in which one study with maximal or minimal OR/RR was excluded at a time, the summary estimates were not substantially affected by most of the exposures (online Supplementary Table S18).

Publication bias

Neither Egger’s nor Begg’s test revealed a significant publication bias for any combined analysis (P values ranged from 0.08 to 0.97 for Egger’s test and from 0.07 to 1.00 for Begg’s test) (online Supplemental Table S19). The funnel plots also indicated no evidence of publication bias (online Supplementary Figs. S6–S9).

Discussion

In this meta-analysis, we obtained summary evidence that consumption of whole milk was positively associated with ovarian cancer risk, whereas consuming large amounts of low-fat milk, dietary Ca and dietary vitamin D were negatively associated with ovarian cancer risk. Dose–response analyses revealed that ovarian cancer risk increased with the higher intakes of total dairy products and whole milk but decreased with the higher intakes of low-fat milk, cheese, total/dietary Ca and dietary/circulating vitamin D. Notably, the positive association between whole milk and ovarian cancer risk and negative association between low-fat milk, skimmed milk, dietary Ca and dietary vitamin D and ovarian cancer risk were observed in both models.

The WCRF/AICR project 2018, which analysed the effects of diet, nutrition and other factors on ovarian cancer risk, reported the absence of a significant linear association between total dairy products and ovarian cancer risk (pooled RR 1.06, 95% CI 0.92, 1.23, $P: 66.1\%$). This finding is inconsistent with the finding of our dose–response analysis that a higher intake of total dairy products is positively associated with ovarian cancer risk. Different inclusion criteria and number of studies included could explain the difference in the findings between the WCRF/AICR project and ours. The WCRF/AICR project 2018 included five

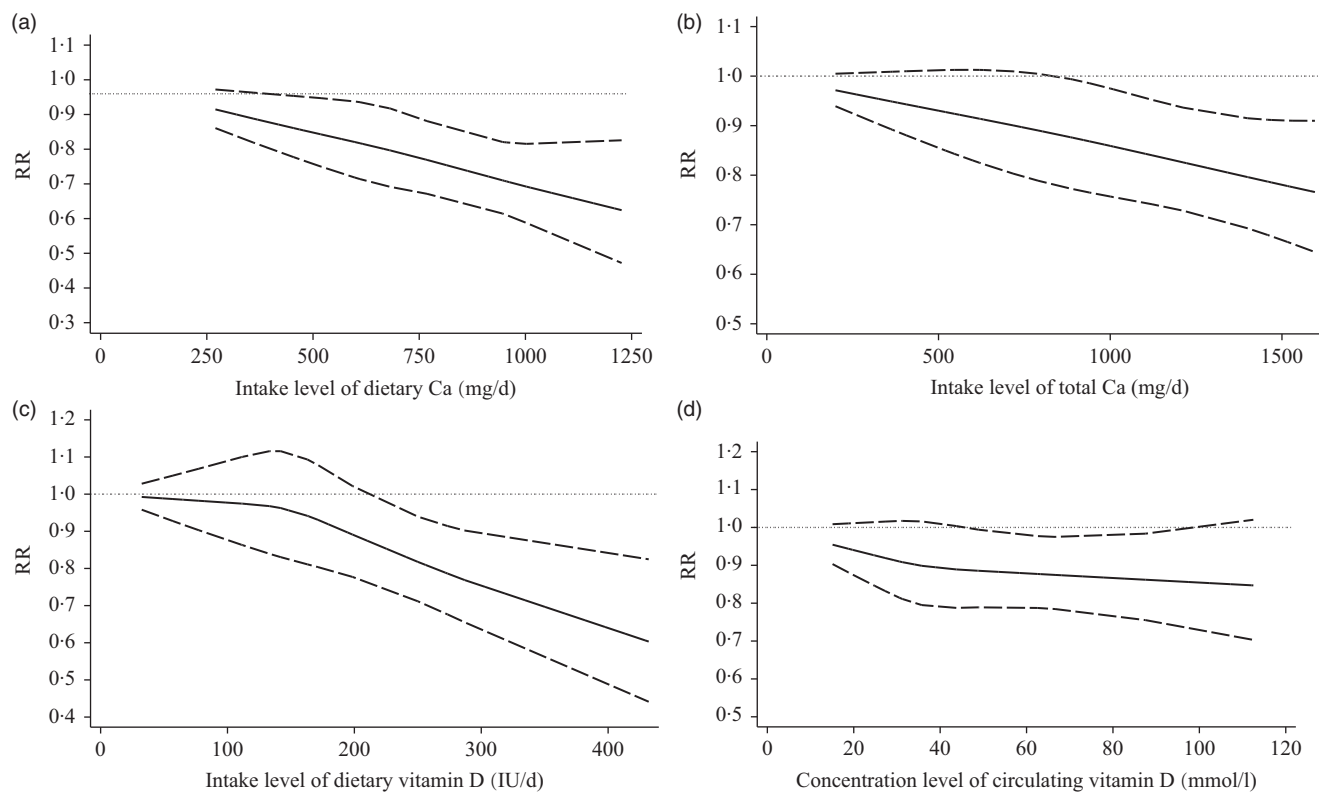


Fig. 4. Dose–response relationship between intakes of dietary calcium (a), total calcium (b), dietary vitamin D (c), as well as circulating vitamin D concentration (d), and the risk of ovarian cancer. RR, relative risk. (a–d) — Linear model; - - - 95% confidence interval.

cohort studies for dairy products, while our study included twelve studies on total dairy products for dose–response analysis, some of these articles were published recently^(41,42,47–51,56,57). Furthermore, aside from the food categories analysed by WCRF/AICR project, we further explored the effects of low-fat milk, skimmed milk and total/dietary vitamin D on ovarian cancer risk.

The WCRF/AICR project 2018⁽¹¹⁾ revealed no significant association between whole milk intake and ovarian cancer risk. However, compared with the nine studies on whole milk included in our study, only three cohort studies were included in the WCRF/AICR project 2018; thus, the null association in the latter project may have been due to the small number of publications examined, which provided insufficient statistical power to detect an association. Null associations were reported for whole milk, low-fat milk or skimmed milk in two meta-analyses^(14,58); however, these studies generally included fewer studies than our study did and all of these studies were published 10 years ago. In contrast, a meta-analysis by Liu *et al.* in 2015⁽¹²⁾ that compared the highest *v.* lowest intake indicated that whole milk intake was associated with 23% (3–46%) increased risk of ovarian cancer, but this meta-analysis found null association for low-fat/skimmed milk (RR 0.93, 95% CI 0.79, 1.09). Their results are in line with our findings linking whole milk intake with ovarian cancer risk but inconsistent with the protective effect of low-fat milk against ovarian cancer. This discrepancy may be due to the differences in the classification of low-fat/skimmed milk between the study by Liu *et al.*⁽¹²⁾ and our study. Liu *et al.*⁽¹²⁾

combined these two types of milk to explore the contribution of dairy fat to ovarian cancer, whereas in our study, low-fat milk and skimmed milk were considered separately, with low-fat (1%) and reduced-fat (2%) milk combined as ‘low-fat milk’. There are some possible explanations for the contradictory results between whole fat milk and low-fat milk/skimmed milk in our meta-analysis. First of all, the fat component, which was lower in low-fat milk than in whole milk, might play a vital role in the aetiology of ovarian cancer⁽⁵⁹⁾. Consistent with this finding, there was a recent meta-analysis of twenty-five epidemiological studies that reported a high intake of the fat component might be related to increased ovarian cancer risk⁽⁶⁰⁾. Second, the increased risk from whole milk may be attributable to the fat-soluble hormones in the dairy fat produced from pregnant cows, as indicated by a high correlation coefficient between milk and ovarian cancer (spearman correlation coefficient r 0.78) found in one study owing to the elevated concentrations of oestrogen and progesterone in the milk⁽⁶¹⁾. Furthermore, fat components and fat-soluble hormones in whole milk may be positively associated with an increase in the insulin-like growth factor 1 level⁽⁶²⁾, which is implicated in many malignancies such as ovarian cancer. Insulin-like growth factor 1 receptor overexpression is known to increase cell proliferation and inhibit apoptosis or induce the malignant transformation of ovarian epithelial cells^(9,10).

Nonetheless, we did not find significant protective effects of skimmed milk against ovarian cancer in either of the two models. Some studies have indicated that since the fat component is wholly extracted from the skimmed milk, the difference of

ovarian cancer risk between skimmed milk and low-fat milk may be partly ascribed to the much lower levels of fat-soluble vitamins and minerals in skimmed milk than in low-fat milk as these nutrients play a vital role in the risk of oestrogen-associated cancer^(15,63). In addition, the specific definitions of skimmed milk and low-fat milk could vary across studies; therefore, the differences observed in our study, as well as in previous studies, between skimmed milk and low-fat milk might be partly ascribed to the varieties in definitions and misclassifications of these two kinds of milk.

In the dose–response analysis, we observed that every 100 g/d increase in cheese intake might be near-linearly associated with a 13% decrease in ovarian cancer risk. However, we found no evidence suggesting an inverse association between cheese intake and the ovarian cancer risk in the comparison between the highest and lowest intake groups, and similar findings were also reported by WCRF/AICR project 2018⁽¹¹⁾ and Genkinger *et al.*⁽¹³⁾. This discrepancy may be explained by the high heterogeneity of studies in the highest *v.* lowest intake group comparison in our meta-analysis, which could be partly attributable to the use of varying definitions of cheese between studies. In addition, the differences in study selection between the two models might have led to inconsistent findings. Only those studies offering at least three groups of OR/RR and their 95% CI across different categories were included in the dose–response analysis, but only two groups of OR/RR and their 95% CI in the extreme intake groups were needed in the highest *v.* lowest intake group comparison. The biological mechanism also suggested that the potential protective effects of cheese against ovarian cancer may be ascribed to the presence of inhibitors of desaturases (D9-desaturase and D5-desaturase) in cheese, which is known to inhibit TAG synthesis by fatty acid desaturases and then reduce the pathogenic effects of fat⁽⁶⁴⁾. Additionally, cheese is nutritious and contains live micro-organisms serving as probiotics⁽⁶⁵⁾, which have been reported to reduce pathological alterations, stimulate the mucosal immunity, interact with inflammatory mediators to enhance the immune system⁽⁶⁶⁾ and even decrease the overall cancer risk⁽⁶⁷⁾. Further studies with a larger sample size of a cheese-eating population are needed to confirm our results and explore the relation between cheese and ovarian cancer risk.

We found evidence suggesting a decreased risk of ovarian cancer with a higher dietary intake of Ca or vitamin D. Our finding regarding dietary Ca was consistent with that of a previous meta-analysis that found a pooled RR of 0.80 (95% CI 0.66, 0.98) for dietary Ca intake in the highest *v.* lowest intake comparison⁽¹⁵⁾. Nonetheless, null linear associations between total Ca (foods and supplements) and dietary Ca with ovarian cancer risk were reported by the WCRF/AICR project 2018. Only three cohort studies were combined in this project for the dose–response analyses for the two Ca (Park⁽⁴²⁾, Chang⁽⁵¹⁾ and Koralek⁽⁴⁹⁾ for total Ca, and Kushi⁽⁴⁷⁾, Park, 2009⁽⁴²⁾ and Koralek⁽⁴⁹⁾ for dietary Ca); the relatively insufficient sample size could have reduced the statistical power of the analyses, indicating a possible underestimation of the associations of total and dietary Ca with ovarian cancer. Ca might decrease ovarian cancer by reducing the level of circulating parathyroid hormone, a tumour promoter acting as a co-mitogen and anti-apoptotic factor⁽⁶⁸⁾. This decrease has been reported to further reduce the

hepatic and osteoblastic synthesis of insulin-like growth factor 1⁽⁶⁹⁾, consequently attenuating the promotion of cell proliferation and inhibition of apoptosis^(9,10). Vitamin D is a fat-soluble prohormone known for regulating genomic and nongenomic signal transduction pathways by its anti-tumorigenic activities, and it also plays a vital role in maintaining Ca homeostasis by mediating cellular proliferation and metabolism⁽⁷⁰⁾. The intestinal absorption of Ca is facilitated by vitamin D and has the same signalling pathways for the vitamin D receptor and Ca receptor⁽⁷¹⁾. Moreover, Ca prolongs the half-life of vitamin D, and the consequent vitamin D receptor activation, in turn, stimulates Ca transportation⁽⁷²⁾ that might explain the inconsistent results of total and dietary Ca. Finally, dietary vitamin D, mainly from dairy products, plant leaves, plant roots and marine fish, can be used by our bodies only after being metabolised by the liver into 25-hydroxyvitamin D, the major circulating metabolite and indicator of vitamin D⁽⁷³⁾. Notably, exposure to sunlight and UVB radiation is known to stimulate the synthesis of 25-hydroxyvitamin D in the skin, which then facilitates Ca absorption⁽⁷⁴⁾. This may lead to discrepancies between dietary and circulating vitamin D, total and dietary vitamin D.

Subgroup analyses have suggested that age can affect the association between lactose and ovarian cancer risk. The exact mechanism is still unclear. The ingested lactose would be converted into glucose and galactose by intestinal enzymes⁽⁷⁵⁾. Due to ageing, the enzymes activity in older women might be lower than that in younger women. The relative abundance of galactose-metabolising enzymes in ovarian tissue has been reported to play a key role in maintaining the healthy ovarian function⁽⁷⁶⁾. Of note, the galactose-1-phosphate uridylyltransferase is a crucial enzyme involved in lactose metabolism, and women with less galactose-1-phosphate uridylyltransferase activity might have a higher ovarian cancer risk⁽⁷⁷⁾. The reduced galactose-1-phosphate uridylyltransferase activity has been found to be associated with the accumulation of galactose-1-phosphate, a toxic metabolite that might be associated with the premature ovarian failure⁽⁷⁸⁾ and might be the risk factor for ovarian cancer⁽⁷⁹⁾. This finding may partly explain that the association of lactose with ovarian cancer risk was more evident among older women.

Our study has some limitations. First, although we systematically searched three authoritative databases and two clinical trial databases, some relevant studies might have been missed for unavoidable reasons, which could have affected the analysis. Second, most of the included studies were case–control studies; thus, the potential influence of recall bias, residual confounders and differential participation rates cannot be ruled out. Third, because the sample size scarcely decreased after separating the two study types in several exposure groups, the still limited number of studies might have resulted in a small sample size and low statistical power. We did not analyse the case–control and cohort studies separately. However, no significant result was identified in the stratified analyses or the meta-regression analyses according to the study design. Fourth, for dose–response analyses, we assumed linearity, but did not test for it and potential nonlinear dose–response trends might exist. Fifth, the various instruments used to measure dietary intake level and the varying definitions of the factors of interest such as low-fat milk,

skimmed milk and cheese across studies might have generated potential unmeasured confounders. Sixth, the self-reported dietary assessment or the FFQ used in some studies might be prone to measurement errors due to factors such as under- or over-reporting as well as incompleteness of the food composition database. Seventh, since most of the included studies were performed among Caucasian populations, it is unclear whether our findings could be generalised to populations of different races. Finally, the NOS score, ranging from 4 to 8 points, was confirmed to be the source of heterogeneity for whole milk results in the meta-regression analysis, suggesting that the differences between high- and low-quality studies might affect the reliability of the results from different studies.

In conclusion, we found that a high intake of whole milk is significantly associated with an elevated risk of ovarian cancer, whereas higher intakes of low-fat milk, dietary Ca and dietary vitamin D are associated with reduced ovarian cancer risk. Furthermore, every 100 g/d increase in total dairy product consumption was found to be associated with increased ovarian cancer risk; however, inverse linear dose–response associations with ovarian cancer risk were observed for all cheese intake, total Ca intake and circulating vitamin D levels.

Acknowledgements

This work was supported in part by the National Natural Science Foundation of China (grant no. 81602853).

The authors' responsibilities were as follows: F. F. Z and Z. C. Y.: study concept and design; M. Q. L., X. P. G. and X. X. Y.: completed the literature search and data extraction; M. Q. L and X. P. G.: performed the statistical analyses; M. Q. L. and X. P. G.: drafted the manuscript; N. N. and J. T.: assisted in the revision of the manuscript.

None of the authors reported a conflict of interest related to the study.

Supplementary material

For supplementary materials referred to in this article, please visit <https://doi.org/10.1017/S0007114520001075>

References

1. Bray F, Ferlay J, Soerjomataram I, *et al.* (2018) Global cancer statistics 2018: GLOBOCAN estimates of incidence and mortality worldwide for 36 cancers in 185 countries. *CA Cancer J Clin* **68**, 394–424.
2. Coburn SB, Bray F, Sherman ME, *et al.* (2017) International patterns and trends in ovarian cancer incidence, overall and by histologic subtype. *Int J Cancer* **140**, 2451–2460.
3. Lee JY, Kim S, Kim YT, *et al.* (2018) Changes in ovarian cancer survival during the 20 years before the era of targeted therapy. *BMC Cancer* **18**, 601.
4. Reid BM, Permuth JB & Sellers TA (2017) Epidemiology of ovarian cancer: a review. *Cancer Biol Med* **14**, 9–32.
5. Nicklas TA, O'Neil CE & Fulgoni VL, 3rd (2009) The role of dairy in meeting the recommendations for shortfall nutrients in the American diet. *J Am Coll Nutr* **28**, Suppl. 1, 73S–81S.
6. Bermejo LM, Lopez-Plaza B, Santurino C, *et al.* (2019) Milk and dairy product consumption and bladder cancer risk: a systematic review and meta-analysis of observational studies. *Adv Nutr* **10**, S224–S238.
7. Thorning TK, Raben A, Tholstrup T, *et al.* (2016) Milk and dairy products: good or bad for human health? An assessment of the totality of scientific evidence. *Food Nutr Res* **60**, 32527.
8. Fleet JC, DeSmet M, Johnson R, *et al.* (2012) Vitamin D and cancer: a review of molecular mechanisms. *Biochem J* **441**, 61–76.
9. Khandwala HM, McCutcheon IE, Flyvbjerg A, *et al.* (2000) The effects of insulin-like growth factors on tumorigenesis and neoplastic growth. *Endocr Rev* **21**, 215–244.
10. Coppola D, Saunders B, Fu L, *et al.* (1999) The insulin-like growth factor 1 receptor induces transformation and tumorigenicity of ovarian mesothelial cells and down-regulates their Fas-receptor expression. *Cancer Res* **59**, 3264–3270.
11. World Cancer Research Fund/American Institute for Cancer Research (2018) Continuous Update Project Expert Report 2018. Diet, Nutrition, Physical, Activity and Ovarian Cancer. <http://dietandcancerreport.org> (accessed October 2019).
12. Liu J, Tang W, Sang L, *et al.* (2015) Milk, yogurt, and lactose intake and ovarian cancer risk: a meta-analysis. *Nutr Cancer* **67**, 68–72.
13. Genkinger JM, Hunter DJ, Spiegelman D, *et al.* (2006) Dairy products and ovarian cancer: a pooled analysis of 12 cohort studies. *Cancer Epidemiol Biomarkers Prev* **15**, 364–372.
14. Larsson SC, Orsini N & Wolk A (2006) Milk, milk products and lactose intake and ovarian cancer risk: a meta-analysis of epidemiological studies. *Int J Cancer* **118**, 431–441.
15. Song X, Li Z, Ji X, *et al.* (2017) Calcium intake and the risk of ovarian cancer: a meta-analysis. *Nutrients* **9**, 679–694.
16. Cook LS, Neilson HK, Lorenzetti DL, *et al.* (2010) A systematic literature review of vitamin D and ovarian cancer. *Am J Obstet Gynecol* **203**, 70.e1–e8.
17. Stang A (2010) Critical evaluation of the Newcastle–Ottawa scale for the assessment of the quality of nonrandomized studies in meta-analyses. *Eur J Epidemiol* **25**, 603–605.
18. Greenland S (1987) Quantitative methods in the review of epidemiologic literature. *Epidemiol Rev* **9**, 1–30.
19. Riley RD, Higgins JP & Deeks JJ (2011) Interpretation of random effects meta-analyses. *BMJ* **342**, d549.
20. Zheng W, Danforth KN, Tworoger SS, *et al.* (2010) Circulating 25-Hydroxyvitamin D and risk of epithelial ovarian cancer. *Am J Epidemiol* **172**, 70–80.
21. Hamling J, Lee P, Weitkunat R, *et al.* (2008) Facilitating meta-analyses by deriving relative effect and precision estimates for alternative comparisons from a set of estimates presented by exposure level or disease category. *Stat Med* **27**, 954–970.
22. Higgins JP & Thompson SG (2002) Quantifying heterogeneity in a meta-analysis. *Stat Med* **21**, 1539–1558.
23. Greenland S & Longnecker MP (1992) Methods for trend estimation from summarized dose–response data, with applications to meta-analysis. *Am J Epidemiol* **135**, 1301–1309.
24. Orsini N, Bellocco R & Greenland S (2006) Generalized least squares for trend estimation of summarized dose–response data. *Stata J* **6**, 40–57.
25. Chen GC, Qin LQ & Ye JK (2014) Leptin levels and risk of type 2 diabetes: gender-specific meta-analysis. *Obes Rev* **15**, 134–142.
26. Ding M, Bhupathiraju SN, Satija A, *et al.* (2014) Long-term coffee consumption and risk of cardiovascular disease: a systematic review and a dose–response meta-analysis of prospective cohort studies. *Circulation* **129**, 643–659.
27. Wang X, Ouyang Y, Liu J, *et al.* (2014) Fruit and vegetable consumption and mortality from all causes, cardiovascular



- disease, and cancer: systematic review and dose–response meta-analysis of prospective cohort studies. *BMJ* **349**, g4490.
28. Egger M, Davey Smith G, Schneider M, *et al.* (1997) Bias in meta-analysis detected by a simple, graphical test. *BMJ* **315**, 629–634.
 29. La Vecchia C, Decarli A, Negri E, *et al.* (1987) Dietary factors and the risk of epithelial ovarian cancer. *J Natl Cancer Inst* **79**, 663–669.
 30. Mettlin CJ & Piver MS (1990) A case–control study of milk-drinking and ovarian cancer risk. *Am J Epidemiol* **132**, 871–876.
 31. Engle A, Muscat JE & Harris RE (1991) Nutritional risk factors and ovarian cancer. *Nutr Cancer* **15**, 239–247.
 32. Risch HA, Jain M, Marrett LD, *et al.* (1994) Dietary lactose intake, lactose intolerance, and the risk of epithelial ovarian cancer in southern Ontario (Canada). *Cancer Cause Control* **5**, 540–548.
 33. Webb PM, Bain CJ, Purdie DM, *et al.* (1998) Milk consumption, galactose metabolism and ovarian cancer (Australia). *Cancer Cause Control* **9**, 637–644.
 34. Bertone ER, Hankinson SE, Newcomb PA, *et al.* (2001) A population-based case–control study of carotenoid and vitamin A intake and ovarian cancer (United States). *Cancer Cause Control* **12**, 83–90.
 35. Bosetti C, Negri E, Franceschi S, *et al.* (2001) Diet and ovarian cancer risk: a case–control study in Italy. *Int J Cancer* **93**, 911–915.
 36. Goodman MT, Wu AH, Tung KH, *et al.* (2002) Association of dairy products, lactose, and calcium with the risk of ovarian cancer. *Am J Epidemiol* **156**, 148–157.
 37. Salazar-Martinez E, Lazcano-Ponce EC, Lira-Lira GG, *et al.* (2002) Nutritional determinants of epithelial ovarian cancer risk: a case–control study in Mexico. *Oncology* **63**, 151–157.
 38. Zhang M, Yang ZY, Binns CW, *et al.* (2002) Diet and ovarian cancer risk: a case–control study in China. *Br J Cancer* **86**, 712–717.
 39. McCann SE, Freudenheim JL, Marshall JR, *et al.* (2003) Risk of human ovarian cancer is related to dietary intake of selected nutrients, phytochemicals and food groups. *J Nutr* **133**, 1937–1942.
 40. Pan SY, Ugnat AM, Mao Y, *et al.* (2004) A case–control study of diet and the risk of ovarian cancer. *Cancer Epidemiol Biomarkers Prev* **13**, 1521–1527.
 41. Kiani F, Knutsen S, Singh P, *et al.* (2006) Dietary risk factors for ovarian cancer: the adventist health study (United States). *Cancer Cause Control* **17**, 137–146.
 42. Park Y, Leitzmann MF, Subar AF, *et al.* (2009) Dairy food, calcium, and risk of cancer in the NIH-AARP Diet and Health Study. *Arch Intern Med* **169**, 391–401.
 43. Faber MT, Jensen A, Sogaard M, *et al.* (2012) Use of dairy products, lactose, and calcium and risk of ovarian cancer results from a Danish case–control study. *Acta Oncologica* **51**, 454–464.
 44. Merritt MA, Cramer DW, Vitonis AF, *et al.* (2013) Dairy foods and nutrients in relation to risk of ovarian cancer and major histological subtypes. *Int J Cancer* **132**, 1114–1124.
 45. Gallus S, Bravi F, Talamini R, *et al.* (2006) Milk, dairy products and cancer risk (Italy). *Cancer Cause Control* **17**, 429–437.
 46. Qin B, Moorman PG, Alberg AJ, *et al.* (2016) Dairy, calcium, Vitamin D and ovarian cancer risk in African-American women. *Br J Cancer* **115**, 1122–1130.
 47. Kushi LH, Mink PJ, Folsom AR, *et al.* (1999) Prospective study of diet and ovarian cancer. *Am J Epidemiol* **149**, 21–31.
 48. Larsson SC, Bergkvist L & Wolk A (2004) Milk and lactose intakes and ovarian cancer risk in the Swedish Mammography Cohort. *Am J Clin Nutr* **80**, 1353–1357.
 49. Koralek DO, Bertone-Johnson ER, Leitzmann MF, *et al.* (2006) Relationship between calcium, lactose, vitamin D, and dairy products and ovarian cancer. *Nutr Cancer* **56**, 22–30.
 50. Mommers M, Schouten LJ, Goldbohm RA, *et al.* (2006) Dairy consumption and ovarian cancer risk in the Netherlands Cohort Study on diet and cancer. *Br J Cancer* **94**, 165–170.
 51. Chang ET, Lee VS, Canchola AJ, *et al.* (2007) Diet and risk of ovarian cancer in the California Teachers Study cohort. *Am J Epidemiol* **165**, 802–813.
 52. Bidoli E, Vecchia CL, Talamini R, *et al.* (2001) Micronutrients and ovarian cancer: a case–control study in Italy. *Ann Oncol* **12**, 1589–1593.
 53. Toriola AT, Surcel HM, Calypso A, *et al.* (2010) Independent and joint effects of serum 25-hydroxyvitamin D and calcium on ovarian cancer risk: a prospective nested case–control study. *Eur J Cancer* **46**, 2799–2805.
 54. Merritt MA, Poole EM, Hankinson SE, *et al.* (2014) Dairy food and nutrient intake in different life periods in relation to risk of ovarian cancer. *Cancer Cause Control* **25**, 795–808.
 55. Cramer DW, Kuper H, Harlow BL, *et al.* (2001) Carotenoids, antioxidants and ovarian cancer risk in pre- and postmenopausal women. *Int J Cancer* **94**, 128–134.
 56. Tworoger SS, Lee IM, Buring JE, *et al.* (2007) Plasma 25-hydroxyvitamin D and 1,25-dihydroxyvitamin D and risk of incident ovarian cancer. *Cancer Epidemiol Biomarkers Prev* **16**, 783–788.
 57. Arslan AA, Clendenen TV, Koenig KL, *et al.* (2009) Circulating vitamin D and risk of epithelial ovarian cancer. *J Oncol* **2009**, 672492.
 58. Qin LQ, Xu JY, Wang PY, *et al.* (2005) Milk/dairy products consumption, galactose metabolism and ovarian cancer: meta-analysis of epidemiological studies. *Eur J Cancer Prev* **14**, 13–19.
 59. Cramer DW, Welch WR, Hutchison GB, *et al.* (1984) Dietary animal fat in relation to ovarian cancer risk. *Obstet Gynecol* **63**, 833–838.
 60. Qiu W, Lu H, Qi Y, *et al.* (2016) Dietary fat intake and ovarian cancer risk: a meta-analysis of epidemiological studies. *Oncotarget* **7**, 37390–37406.
 61. Ganmaa D & Sato A (2005) The possible role of female sex hormones in milk from pregnant cows in the development of breast, ovarian and corpus uteri cancers. *Med Hypotheses* **65**, 1028–1037.
 62. Qin LQ, He K, Xu JY (2009) Milk consumption and circulating insulin-like growth factor-I level: a systematic literature review. *Int J Food Sci Nutr* **60**, Suppl. 7, 330–340.
 63. Yin L, Grandi N, Raum E, *et al.* (2011) Meta-analysis: circulating vitamin D and ovarian cancer risk. *Gynecol Oncol* **121**, 369–375.
 64. Hostmark AT & Lunde MS (2012) Cheese can reduce indexes that estimate fatty acid desaturation. Results from the Oslo Health Study and from experiments with human hepatoma cells. *Appl Physiol Nutr Metab* **37**, 31–39.
 65. Marco ML, Heeney D, Binda S, *et al.* (2017) Health benefits of fermented foods: microbiota and beyond. *Curr Opin Biotechnol* **44**, 94–102.
 66. Vinusha KS, Deepika K, Johnson TS, *et al.* (2018) Proteomic studies on lactic acid bacteria: a review. *Biochem Biophys Rep* **14**, 140–148.
 67. Zhang K, Dai H, Liang W, *et al.* (2019) Fermented dairy foods intake and risk of cancer. *Int J Cancer* **144**, 2099–2108.
 68. McCarty MF (2000) Parathyroid hormone may be a cancer promoter – an explanation for the decrease in cancer risk



- associated with ultraviolet light, calcium, and vitamin D. *Med Hypotheses* **54**, 475–482.
69. Coxam V, Davicco MJ, Durand D, *et al.* (1992) The influence of parathyroid hormone-related protein on hepatic IGF-1 production. *Acta Endocrinol (Copenh)* **126**, 430–433.
 70. Guo H, Guo J, Xie W, *et al.* (2018) The role of vitamin D in ovarian cancer: epidemiology, molecular mechanism and prevention. *J Ovarian Res* **11**, 71.
 71. Peterlik M, Grant WB & Cross HS (2009) Calcium, vitamin D and cancer. *Anticancer Res* **29**, 3687–3698.
 72. Lips P (2012) Interaction between vitamin D and calcium. *Scand J Clin Lab Invest Suppl* **243**, 60–64.
 73. Subramanian A & Gernand AD (2019) Vitamin D metabolites across the menstrual cycle: a systematic review. *BMC Womens Health* **19**, 19.
 74. Hochberg Z & Hochberg I (2019) Evolutionary perspective in rickets and vitamin D. *Front Endocrinol (Lausanne)* **10**, 306.
 75. Liu G, Hale GE & Hughes CL (2000) Galactose metabolism and ovarian toxicity. *Reprod Toxicol* **14**, 377–384.
 76. Xu YK, Ng WG, Kaufman FR, *et al.* (1989) Galactose metabolism in human ovarian tissue. *Pediatr Res* **25**, 151–155.
 77. Cramer DW, Harlow BL, Willett WC, *et al.* (1989) Galactose consumption and metabolism in relation to the risk of ovarian cancer. *Lancet* **2**, 66–71.
 78. Kaufman FR, Kogut MD, Donnell GN, *et al.* (1981) Hypergonadotropic hypogonadism in female patients with galactosemia. *N Engl J Med* **304**, 994–998.
 79. Cramer DW (1990) Epidemiologic aspects of early menopause and ovarian cancer. *Ann NY Acad Sci* **592**, 363–375; discussion 390–364.