

## Getting Suspended Cells or Particles Embedded in the Tip of BEEM Capsules

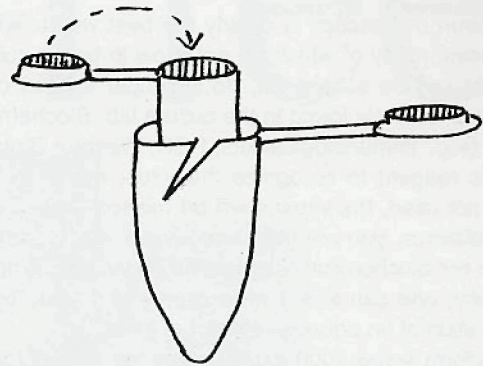
Barbara Plowman, University of the Pacific, School of Dentistry  
 bplowman@sfnail dental .uop. edu

It can be a problem to get suspended (or plated) cells or particles to settle into the apex of a BEEM capsule for embedding, particularly if the cells/particles can not be embedding in agar or gelatin for some reason. The following simple procedure solves this problem.

Process the suspensions in polypropylene test tubes or microcentrifugation tubes. These can be spun down after each transfer for 5 minutes at 3000 rpm. Once the cells/particles are fixed, en bloc stained, and infiltrated with either Spurr's or LR White resin, I transfer them to BEEM capsules. I do not add additional resin yet. These are placed piggyback in microcentrifuge tubes that have been slit with wire cutters to make them large enough for the BEEM capsules to fit (see following illustration).

Processing cell suspensions or plated cells can be done in polypropylene test tubes or microcentrifuge tubes. These can be spun down after each transfer for 5 minutes at 3000 rpm. Once the cells are fixed, en bloc stained, and infiltrated with either Spurr or LRWhite resin, I transfer them to BEEM capsules. I do not add additional resin yet. These are placed piggyback in microcentrifuge tubes. You may have to cut the microcentrifuge tubes with wire cutters to make them large enough for the BEEM capsules to fit. Then, I spin the piggyback BEEM/microcentrifuge tubes. I use a high speed for about 5 minutes. Be sure to close the lid to the BEEM capsules. Once these

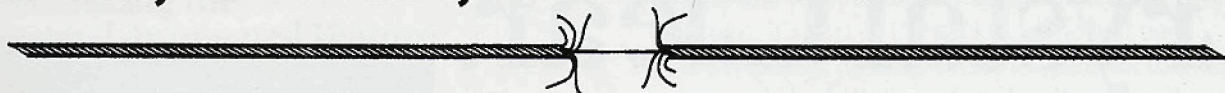
have been spun, you should fill the BEEM capsule with resin to the top and close. Then place in a 60 degree oven. ■



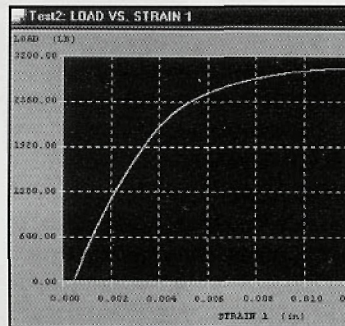
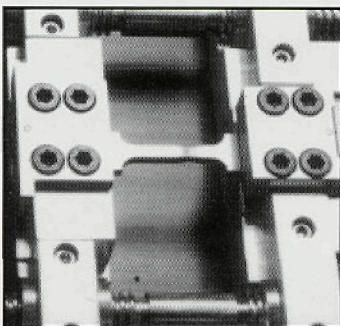
BEEM capsule nested inside slit microcentrifuge tube



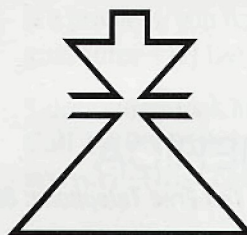
# Do You Need to Manage STRESS, STRAIN, TENSION AND FATIGUE?



Introducing A New Data Acquisition System  
 Designed Specifically For The Parameters Of  
 Mechanical Testing  
 Featuring MTESTWindows™ Software  
 Now Available For FULLAM TENSILE SUBSTAGES  
 For SEM, SPM or Benchtop Use



## ERNEST F. FULLAM, INC.



900 Albany Shaker Road  
 Latham NY 12110-1491  
 Tel: 518 785-5533  
 FAX: 518 785-8647  
 Email: sales@fullam.com  
 www.fullam.com