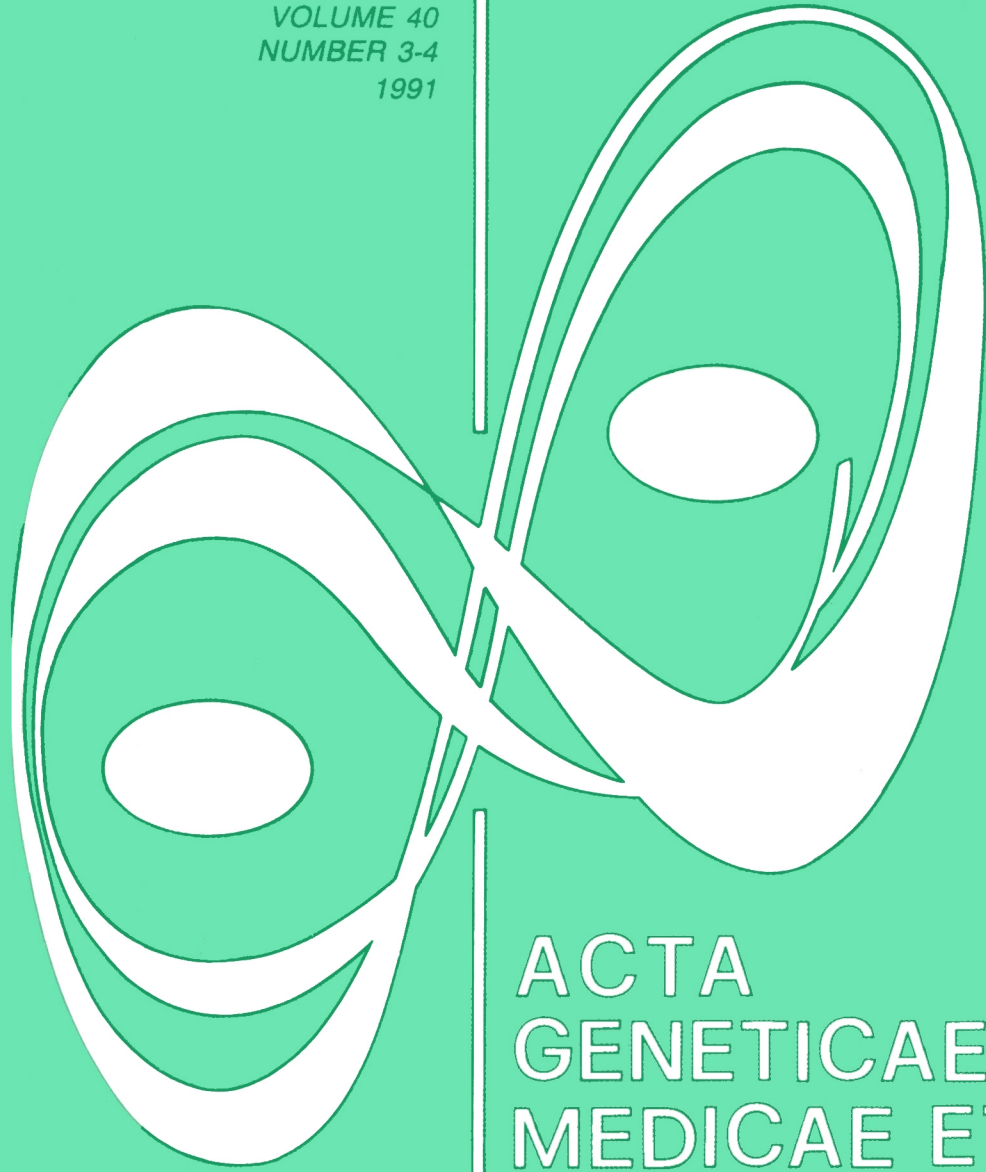


VOLUME 40  
NUMBER 3-4  
1991



ACTA  
GENETICAE  
MEDICAE ET  
GEMELLOLOGIAE  
TWIN RESEARCH

CODEN AGMGAK 40: 263-408 (1991)

ISSN: 0001-5660

<https://doi.org/10.1017/S000156600003433> Published online by Cambridge University Press

*Official Journal of the International Society for Twin Studies*

Published by THE MENDEL INSTITUTE, Rome

# ACTA GENETICAE MEDICAE ET GEMELLOLOGIAE

**TWIN RESEARCH** Official Journal of the International Society for Twin Studies  
Published by The Mendel Institute, Rome

---

## EDITOR

**Luigi Gedda**  
*The Mendel Institute, Rome*

## EXECUTIVE EDITOR

**Paolo Parisi**  
*The Mendel Institute, Rome*

## EDITORIAL BOARD

**Gordon Allen**  
*Bethesda, Maryland*

**Frank Barron**  
*Laboratory for the Psychological Study of Lives  
University of California, Santa Cruz*

**Kurt Benirschke**  
*Zoological Society of San Diego, California*

**Kare Berg**  
*Institute of Medical Genetics, University of Oslo*

**Jan A. Böök**  
*Institute of Medical Genetics  
University of Uppsala, Sweden*

**Rune Cederlöf**  
*Department of Environmental Hygiene  
Karolinska Institute, Stockholm*

**Joe C. Christian**  
*Department of Medical Genetics  
Indiana University, Indianapolis*

**E. Defrise-Gussenhoven**  
*Laboratory of Human Genetics  
Free University of Brussels*

**Lindon J. Eaves**  
*Department of Human Genetics  
Medical College of Virginia, Richmond*

**Aldur W. Eriksson**  
*Anthropogenetic Institute  
Free University of Amsterdam*

**Manning Feinleib**  
*National Center for Health Statistics  
Hyattsville, Maryland*

**David W. Fulker**  
*Institute for Behavioral Genetics  
University of Colorado, Boulder*

**Irving I. Gottesman**  
*Washington University Medical Center  
St. Louis, Missouri*

**Isaac Halbrecht**  
*B. Gattegno Research Institute of Human  
Reproduction and Fetal Development  
Hasharon Hospital, Petah Tiqva, Israel*

**Mogens Hauge**  
*Institute of Clinical Genetics  
University of Odense, Denmark*

**Joseph M. Horn**  
*Department of Psychology  
University of Texas, Austin*

**Zdenek Hrubec**  
*National Cancer Institute  
Bethesda, Maryland*

**Eiji Inouye**  
*Institute of Brain Research, University of Tokyo*

**Lissy F. Jarvik**  
*Department of Psychiatry  
University of California, Los Angeles*

**Louis Keith**  
*Department of Obstetrics and Gynecology  
Northwestern University, Chicago*

**David Klein**  
*Geneva*

**Gerhard Koch**  
*Institute of Human Genetics  
University of Erlangen-Nürnberg, FRG*

**Einar Kringlen**  
*Institute of Behavioral Sciences in Medicine  
University of Oslo*

**Jérôme Lejeune**  
*Institute of Progenesis, University of Paris*

**F. Leroy**  
*Department of Obstetrics and Gynecology  
Free University of Brussels*

**Ian MacGillivray**  
*Bristol, UK*

**Ashley Montagu**  
*Princeton, New Jersey*

**Walter E. Nance**  
*Department of Human Genetics  
Medical College of Virginia, Richmond*

**P.P.S. Nylander**  
*Department of Obstetrics and Gynecology  
University of Ibadan, Nigeria*

**John D. Rainer**  
*Department of Psychiatry  
Columbia University, New York*

**David C. Rife**  
*Clewiston, Florida*

**Francisco M. Salzano**  
*Institute of Biosciences, UFRGS  
Porto Alegre, RS, Brasil*

**Steven G. Vandenberg**  
*Institute for Behavioral Genetics  
University of Colorado, Boulder*

**René Zazzo**  
*Laboratory of Child Psychobiology  
University of Paris*

*Acta Geneticae Medicae et Gemellologiae* is published quarterly by The Mendel Institute, Piazza Galeno 5, 00162 Rome, Italy.

**Subscription price:** Volume 40 (1991), 4 issues of about 100 pages each: US \$ 260.00. Airmail supplement: US \$ 30.00 (Oceania US \$ 40.00).

**Indexed by:** Current Contents/Life Sciences - Social Sciences index • Psychological Abstracts • Biological Abstracts • Excerpta Medica • Institute of Scientific Information USSR.

Printed in Italy

Autorizzazione del Tribunale di Roma - Registro Stampa N. 345/83 del 7.12.1983.

Direttore responsabile: Luigi Gedda

© 1991 by Associazione Istituto di Genetica Medica e Gemellologia Gregorio Mendel.

## CONTENTS

### Volume 40 • Number 1 • 1991

- 1 **Spontaneous Drawing and the Individuality of Twins**  
by L. Gedda
- 7 **The Swedish Adoption Twin Study of Aging: An Update**  
by N.L. Pedersen, G.E. McClearn, R. Plomin, J.R. Nesselroade, S. Berg, U. De Faire
- 21 **Four-Year Follow-up of Locomotor and Language Development in 34 Twin Pairs**  
by B. Alin Åkerman, P.A. Thomassen
- 29 **Twins: Are They at Risk? A Longitudinal Study of Twins and Nontwins from Birth to 18 Years of Age**  
by B. Alin Åkerman, S. Fischbein
- 41 **Maternal Reactions to the Birth of Triplets**  
by M. Robin, M. Bydlowski, F. Cahen, D. Josse
- 53 **Forms of Family Reorganization Following the Birth of Twins**  
by M. Robin, D. Josse, C. Tourrette
- 63 **The Effects of Hospitalization for Bed Rest on Duration of Gestation, Fetal Growth and Neonatal Morbidity in Triplet Pregnancy**  
by C.A. Crowther, D.A.A. Verkuyll, M.F. Ashworth, C. Bannerman, H.M. Ashurst
- 69 **Gestational Age-specific Birthweights of Twins Versus Singletons**  
by B. Luke, F.R. Witter, H. Abbey, T. Feng, A.B. Namnoum, D.M. Paige, T.R.B. Johnson
- 77 **Estimates of Genetic and Environmental Components of Serum Isocitrate Dehydrogenase (ICDH) in Normal Twins**  
by D. Rapaport, G.M.D.D. Colletto, M. Vainzof, M. Zatz
- 83 **Back Pain: A Study of Twins**  
by B. Bengtsson, J. Thorson

- 91 Presence of an Endothelioid Tubelike Structure at the Interface of the Amniotic Membranes in Twins with Single and Double Placenta. Growth Factors Involvement**

by M. Bondí, G. Brenci, M. Bondí Jr.

**101 Current Research on Multiple Births**

**Volume 40 • Number 2 • 1991**

- 133 A Twin Study Approach Towards Understanding Genetic Contributions to Body Size and Metabolic Rate**

by J.K. Hewitt, A.J. Stunkard, D. Carroll, J. Sims, J.R. Turner

- 147 Zygosity, Placental Membranes and Weinberg's Rule in a Danish Consecutive Twin Series**

by H. Husby, N.V. Holm, A. Gernow, S.G. Thomsen, K. Kock, H. Gürtler

- 153 Northwestern University Twin Study X: Outcome to Twin Gestations Complicated by Gestational Diabetes Mellitus**

by J.D. Keller, G.O. Utter, S.L. Dooley, J.P. Minogue, L.G. Keith

- 159 Efficient Sequential Search of Genetic Systems for Diagnosis of Twin Zygosity**

by A.B. Das Chaudhuri

- 165 Iatrogenic Influences on the Heritability of Childhood Tonsillectomy: Cohort Differences in Twin Concordance**

by N.G. Martin, U. Kehren, D. Battistutta, J.D. Mathews

- 173 Influence of Clinical Variables on Triplet Birth Weight**

by R.B. Newman, J.S. Jones, M.C. Miller

- 181 Time Trends in Characteristics and Outcome of Twin Pregnancies**

by L. Moreault, S. Marcoux, J. Fabia, S. Tennina

- 193 Factors Associated with Neonatal Problems in Twin Gestations**

by D. Fraser, R. Picard, E. Picard

**201 Current Research on Multiple Births**

**Volume 40 • Number 3-4 • 1991**

- 263 An Italian Army Twin Register**

by L. Gedda, S. Messinetti, G. Brenci, G. Ronzani

- 269 Twinning in Susceptible Mothers — An Exploratory Study of International Data by Payami's Models Suggests "Reproductive Maturity" as a Risk Factor**

by P. Philippe

- 291 Excessive Follicular Recruitment and Growth in Mothers of Spontaneous Dizygotic Twins**  
by N.G. Martin, S. Shanley, K. Butt, J. Osborne, G. O'Brien
- 303 Time Trends in Neonatal Mortality Among Twins and Singletons in New York City, 1968-1986**  
by J.L. Kiely
- 311 Ethnicity and Sex Ratio in Twin Births**  
by R. Picard, D. Fraser, E. Picard
- 319 Changes in the DZ Unlike/Like Sex Ratio in The Netherlands**  
by J.F. Orlebeke, A.W. Eriksson, D.I. Boomsma, R. Vlietinck, F.J. Tas, E.C. de Geus
- 325 Conjoined Twins — An Epidemiological Study Based on 312 Cases**  
by The International Clearinghouse for Birth Defects Monitoring Systems
- 337 Birth Defects in Twins: Study in a Spanish Population**  
by M.A. Ramos-Arroyo
- 345 The Definition, Diagnosis, and Management of Growth-Discordant Twins: An International Census Survey**  
by I. Blickstein
- 353 Influence of Placentation on High Density Lipoproteins in Adult Males: The NHLBI Twin Study**  
by T. Reed, J.C. Christian, P.D. Wood, E.J. Schaefer
- 361 Acid-Base Differences in Preterm and Term Twin Pregnancy**  
by S.A. Ordorica, I.A. Hoskins, B.K. Young
- 373 Discordant Twins: Acid-Base Status**  
by S.A. Ordorica, F.J. Frieden, I.A. Hoskins, B.K. Young
- 383 Maternal Plasma Concentrations of Insulin-Like Growth Factor-I (IGF-I) and Human Placental Lactogen (hPL) in Twin Pregnancies**  
by R.R. Kazer, E.R. Cheng, T.G. Unterman, R.P. Glick
- 389 Cesarean Delivery of the Second Twin After the Vaginal Birth of the First Twin: Misfortune or Mismanagement?**  
by I. Blickstein, Y. Zalel, A. Weissman
- 395 Twin Pregnancy Complicated by Intrauterine Demise of One Fetus**  
by G. Loverro, D.M. Ranieri, P. Greco, L. Selvaggi
- 401 Errata Corrige**
- 403 Author Index to Volume 40**
- 405 Subject Index to Volume 40**