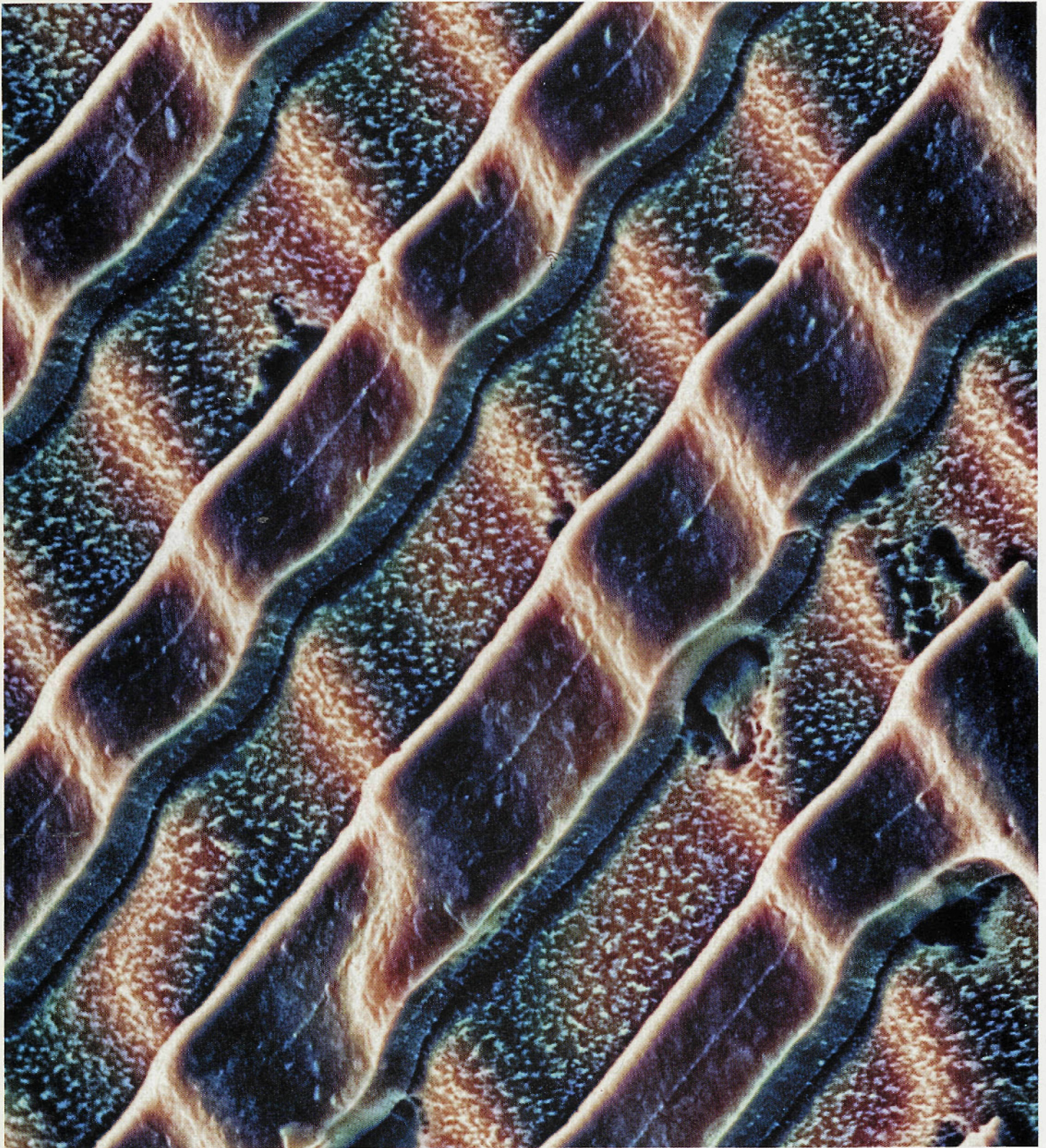


MICROSCOPY TODAY

APRIL 2000

ISSUE #00-3

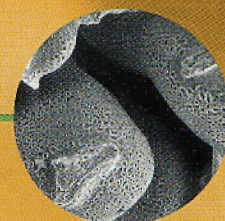


THE
LEO
1525

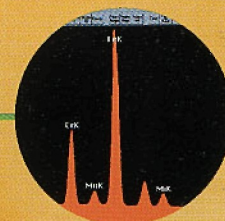
FESEM

Affordable Nano-analysis

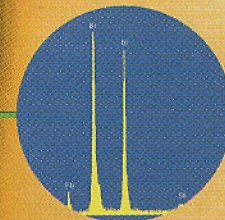
Simultaneously obtain ultra high resolution imaging and analysis affordably – that's LEO performance AND value. Featuring the GEMINI field emission column, the LEO 1525 delivers 1.5nm at 20 kV, and 3.5 nm at 1kV. The chamber uniquely accommodates EDS, EBSD and fully-focusing WDS spectrometers as well as a range of other detectors. For the ultimate in affordable nano-analysis, the LEO 1525 is unequalled.



In-lens SE



EDS



WDS



EBSD

Contact
the LEO office
nearest to you

LEO Electron Microscopy Worldwide:

USA: New York Tel (1) 914 747 7700 Fax (1) 914 681 7443 E-mail info@leo-usa.com

UK: Cambridge Tel (44) 1223 414166 Fax (44) 1223 412776 E-mail info@leo-em.co.uk

Germany: Oberkochen Tel (49) 73 64 94 6137 Fax (49) 73 64 94 4851 E-mail info@leo.de

France: Rueil-Malmaison Tel (33) 1 41 39 92 10 Fax (33) 1 41 39 92 29 E-mail leo_microscopie@compuserve.com

Scandinavia: Sweden Tel (46) 158 13090 Fax (46) 158 13095 E-mail michael.andersson@leo-em.d.se

India: Tel (91) 115723240 Fax (91) 11 5764181 E-mail leoindia@iasdlo1.vsnl.net.in

Plus a worldwide network of dealers

Website: www.leo-usa.com

LEO
The power to resolve