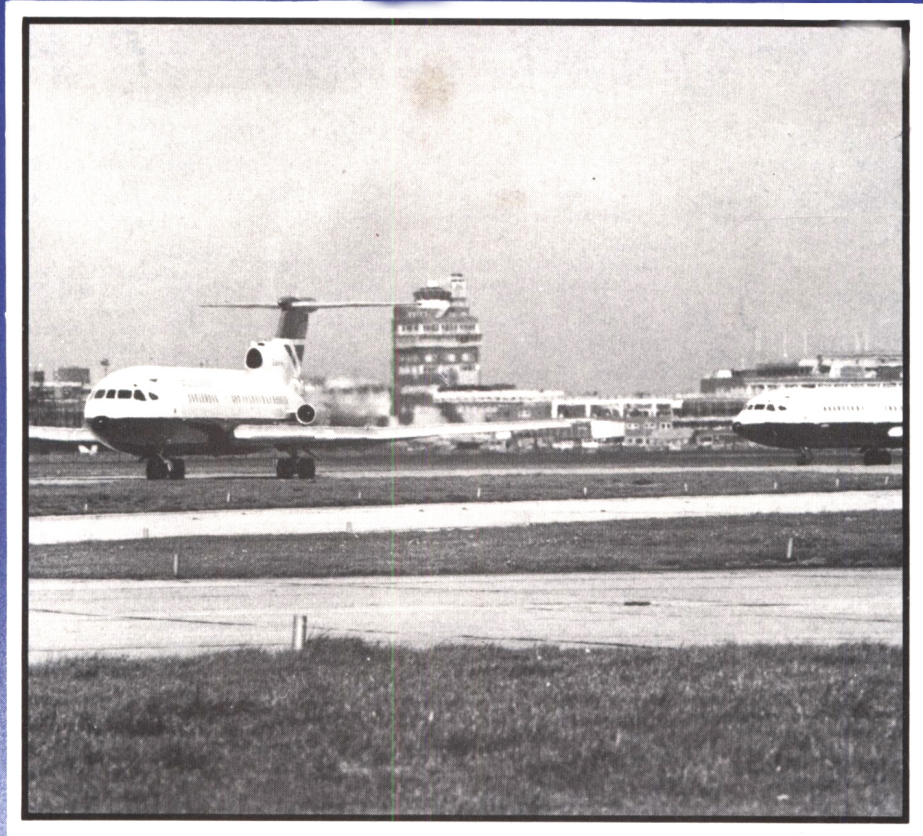


The **AERONAUTICAL** Journal



Volume 85 No 840 JANUARY 1981



**Rotorcraft powerplants
Economics of Shuttle
Tyre tests in soft soil**

DIVISIONS AND BRANCHES OF

THE ROYAL AERONAUTICAL SOCIETY

Australia Branches at: Canberra, Sydney, Melbourne and Adelaide.

President: FRANK AUSTIN, FRAeS. *Hon. Secretary:* B. A. J. SCOLLES, MRAeS, 191 Royal Parade, Parkville, Victoria 3052.

Zimbabwe Branches at: Bulawayo, Gweilo and Salisbury.

President: Sir HUMPHREY GIBBS, KCMG. *President:* COLMAN MYERS, MRAeS. *Hon. Secretary:* Mrs. MARGARET HEAP, Assoc RAeS, PO Box 3759, Salisbury.

New Zealand Branches at: Auckland, Wellington, Palmerston North, Christchurch, Hamilton and Blenheim.

President: F. A. BRITTAIN, AMRAeS. *Hon. Secretary:* C. S. BUTCHER, c/o Management Accounting, 13th floor, Air New Zealand House, Private Bag, Auckland.

Southern Africa

President: R. J. FRITZ, CEng, MRAeS. *Hon. Secretary:* Wg. Cdr. N. F. HARRISON, MRAeS, PO Box 27335, Sunnyside 0132, RSA.

Bedford

President: G. C. HOWELL, FRAeS.

Chairman: M. R. TURLEY, MRAeS.

Hon. Secretary: A. McVITIE, College of Aeronautics, Cranfield Institute of Technology, Bedford. Tel: 0234 750111. Ex. 277

Belfast

President: Dr. P. F. FOREMAN, CBE, FRAeS.

Chairman: Prof. P. P. BENHAM, MRAeS.

Hon. Secretary: T. E. MORRISON, MRAeS, Dept. of Mech. Eng., College of Technology, College Square East, Belfast BT1 6DJ. Tel: Work — Belfast 27244. Home — Dundonald 3403.

Birmingham and Wolverhampton

President: J. H. GOODIER, MRAeS.

Chairman: D. E. HAMMOND, MRAeS.

Hon. Secretary: K. HOMFRAY, AMRAeS, 58 Chartwell Drive, Bushbury, Wolverhampton, West Midlands WV10 8JQ. Tel: Work — 0902 26866; Home — 0902 787631.

Boscombe Down

President: Air Cdre. R. G. SPIERS, OBE, FRAeS.

Chairman: J. B. LAMBIE, CEng, MRAeS.

Hon. Secretary: Wg. Cdr. C. T. B. PEILE, MRAeS, RAF, O/C RAF Handling Squadron, Boscombe Down, Salisbury SP4 0JF. Tel: 09802 3331. Ex. 2513.

Bristol

President: E. B. TRUBSHAW, FRAeS.

Chairman: J. M. HANN, CEng, MRAeS.

Hon. Secretary: J. F. BORTKIEWICZ, FRAeS, Tudor Cottage, Battery Lane, Portishead, Bristol BS20 9JD. Tel: 0272 842364.

Brough

President: L. W. MILSOM, CEng, MIMechE.

Chairman: M. EDWARDS, CEng, MRAeS.

Hon. Secretary: E. J. SOLMAN, Head of Flight Test Dept., British Aerospace, Holme-on-Spalding Moor, York. Tel: 06962-60421. Ex. 46

Cambridge

President: Professor W. A. MAIR, CBE, FRAeS.

Chairman: N. A. J. HARRY, FRAeS.

Hon. Secretary: G. T. ATKINS, MRAeS, Marshall of Cambridge (Engineering) Ltd., Newmarket Road, Cambridge. Tel: 0223 61133.

Chester

President: R. GRIFFITHS, FRAeS

Chairman: V. W. CLARKSON, MRAeS.

Hon. Secretary: J. R. YOUNG, AMRAeS, British Aerospace, Hatfield Chester Division, Broughton, Chester. Tel: 0244 535333.

Christchurch

President: H. COBHAM, FRAeS.

Chairman: R. C. GODWIN, MRAeS.

Hon. Secretary: R. J. STANDING, MRAeS, British Aerospace, Weybridge Bristol Division, Bournemouth (Hurn) Airport, Christchurch, Dorset. Tel: 020-16 3201.

Coventry

President: A. H. POPE, FRAeS.

Chairman: A. J. WEBBER, MRAeS.

Hon. Secretary: A. J. EAGLES, 30 Lupton Ave, Coventry CV3 5BQ. Tel: 0203 415412.

Cranwell

President: Air Vice Marshal B. BROWNLOW, AMRAeS.

Chairman: Wg. Cdr. D. M. F. BRIGHT, CEng, MRAeS, RAF.

Hon. Secretary: Sqn. Ldr. A. W. DEBUSE, CEng, MRAeS, RAF, Dept of Specialist Ground Training, RAF College, Cranwell, Sleaford, Lincs NG34 8HB. Tel: 0400 61201. Ex. Trenchard 205.

Derby

President: D. A. HEAD, MRAeS.

Chairman: J. BUSH, FRAeS.

Hon. Secretary: J. M. ROBERTSON, MRAeS, Rolls-Royce Ltd, Derby DE2 8BJ. Tel: 0332 42424. Ex. 158.

Dublin

President: Capt. J. C. KELLY—ROGERS, OBE, FRAeS.

Chairman: Capt. G. McCABE, CEng, MRAeS.

Hon. Secretary: T. J. MORRISSEY, MRAeS, 109 Foxfield Grove, Raheny, Dublin 5. Tel: Dublin 370011. Ex. 2814.

Gatwick

President: A. T. PUGH, FRAeS.

Chairman: R. R. ATWOOD, MRAeS.

Hon. Secretary: B. R. DAY, AMRAeS, Sales Div. British Caledonian Airways, Gatwick Airport, Horley, Surrey RH6 0LT. Tel: 01-668 9311. Ex. 2950.

Glasgow

President: Dr. A. W. BABISTER, MRAeS.

Chairman: T. J. GOODWIN.

Hon. Secretary: C. SNOWDON, AMRAeS, 18 Torwood Brae, Hamilton ML3 9XB. Tel: East Kilbride 20200. Ex. 395.

Gloucester and Cheltenham

President: Sir ROBERT HUNT, FRAeS.

Chairman: K. BEST, MRAeS.

Hon. Secretary: R. W. WHITE, MRAeS, c/o Smiths Industries Ltd, Bishops Cleeve, Cheltenham, Glos. Tel: 024-267 3333. Ex. 2423.

Halton

President: Gp. Capt. O. J. TRUELOVE, MBE, CEng, MRAeS, RAF.

Chairman: P. R. SAMPSON, AMRAeS.

Secretary: Sqn. Ldr. P. G. HISCOCK, RAF. Airframe Training Squadron, RAF Halton, Bucks HP22 5PG. Tel: 0296 623535. Ex. 440.

Hatfield

President:

Chairman: D. R. NEWMAN, FRAeS.

Hon. Secretary: F. W. VANN, FRAeS, British Aerospace, Hatfield, Chester Division, Hatfield, Herts. Tel: 07072 62345.

Isle of Wight

President: Sir CHRISTOPHER HARTLEY, KCB, CBE, DFC, AFC.

Chairman: R. L. WHEELER, MRAeS.

Hon. Secretary: D. S. B. FLIPPANCE, Design Office, British Hovercraft Corporation Ltd, East Cowes, Isle of Wight. Tel: 098-29 4121.

London Airport

President: K. G. WILKINSON, CBE, FRAeS.

Chairman: Capt. T. A. FULTON, MRAeS.

Hon. Secretary: D. S. FORSYTH, AMRAeS, Room 200A, TBK 5477, British Airways, P.O. Box 10, London (Heathrow) Airport, Hounslow, Middx TW6 2JR. Tel: 01-759 5511. Ex. 3525.

Loughborough

President: Professor D. J. JOHNS, FRAeS.

Chairman: F. G. MACCABEE, MRAeS.

Hon. Secretary: L. E. WOODFIELD, AMRAeS, Transport Technology Dept, Loughborough University of Technology, Loughborough, Leics. LE11 3TU. Tel: Loughborough 63171. Ex. 470.

Luton and Stevenage

President: T. G. KENT, MRAeS.

Chairman: C. H. MARTIN, CEng, FRAeS.

Hon. Secretary: M. F. RICKETT, AMRAeS, British Aerospace, Dynamics Group, Gunnels Wood Rd, Stevenage, Herts. SG1 2AS. Tel: 0438 3456. Ex. 325.

Manchester

President: C. E. FIELDING, OBE, FRAeS.

Chairman: D. L. RAFFLE, CEng, MRAeS.

Hon. Secretary: J. H. MANGAN, AMRAeS, Assist. Sec., W. JAMES, Aerodynamics Dept., British Aerospace, Manchester Division, Woodford, Stockport, Cheshire. Tel: 061-439 5050. Ex. 170

Medway

President: P. A. HEARNE, FRAeS.

Chairman: M. MOULTON, MRAeS.

Hon. Secretary: F. H. WOOD, MRAeS, c/o Marconi Avionics Ltd, Airport Works, Rochester, Kent. Tel: 0634 44400.

Preston

President: F. E. ROE, FRAeS.

Chairman: H. C. CHANNON, MRAeS.

Hon. Secretary: V. B. M. McLEONARD, AMRAeS, British Aerospace, Warton Division, Warton Aerodrome, Preston. Tel: (0772) 633333. Ex. 60.

Prestwick

President: R. McINTYRE, FRAeS.

Chairman: J. M. JANKE, MRAeS.

Hon. Secretary: V. B. M. McLEONARD, AMRAeS, 21 Hillhouse Gdns, Troon, Ayrshire KA10 6SZ. Tel: 0292 311351.

Southampton

President: Professor G. M. LILLEY, FRAeS.

Chairman: Dr. R. A. EAST, MRAeS.

Hon. Secretary: Dr. P. TAYLOR, AMRAeS, Dept. of Aeronautics and Astronautics, The University, Southampton, Hants. SO9 5NH. Tel: 0703 559122. Ex. 2303.

Southend

President: J. R. BATT, MRAeS.

Chairman: E. B. DOVE, FRAeS.

Hon. Secretary: P. R. GROUT, AMRAeS, 36 Alexandra Road, Ashingdon, Rochford, Essex. Tel: 0702 546160.

Swindon

President: W. GILLESPIE, MRAeS.

Chairman: F. J. PURNELL, AMRAeS.

Hon. Secretary: W. H. BUNTING, MRAeS, 29 Chedworth Gate, Swindon SN3 1NE. Tel: Work — 0703 614655; Home — 0793 32327.

Thames Valley

President: E. N. MOBBS.

Chairman: J. L. FAREHAM, MRAeS.

Hon. Secretary: A. G. FOSKETT, MRAeS, M.L. Aviation Co Ltd, White Waltham Aerodrome, Berks. Tel: 062-882 3361.

Weybridge

President: J. FERGUSON SMITH, FRAeS.

Chairman: G. ALESBURY, MRAeS.

Hon. Secretary: A. M. DOBSON, MRAeS, British Aerospace, Weybridge Bristol Division, Weybridge, Surrey. Tel: 97 45522. Ex. 6945.

Yeovil

President: B. D. BLACKWELL, FRAeS.

Chairman: Dr. J. P. JONES, FRAeS.

Hon. Secretary: S. J. LOVE, MRAeS, Development Instrumentation, Westland Helicopters Ltd, Yeovil, Somerset. Tel: 0935 5222. Ex. 160.

The AERONAUTICAL Journal

Incorporating The Institution of Aeronautical Engineers
and The Helicopter Association of Great Britain



Editor: Jay Wolff,
Assoc. Member RAeS
Assistant Editor: Carol Evans
Secretary of the Society:
E. M. J. Schaffter, MA, CEng, FRAeS
4 Hamilton Place, London W1V 0BQ
Tel: 01-499 3515
Telegrams: Didaskalos,
London W1

Advertisements:
J. G. Heller,
Cheiron Media Ltd,
43a Dulwich Village,
London SE21 7BN
Tel: 01-299 1711/2

Reproduction of any of the papers
published in this journal is not
permitted without the written
consent of the Editor.

None of the papers or paragraphs
must be taken as expressing the
opinion of the Council unless
otherwise stated.

Printed by
Manor Park Press Ltd,
Unit 7, Highfield Industrial Estate,
Edison Road, Hampden Park,
Eastbourne.

Subscriptions: £60 per annum,
post free.

Single copies, including back
numbers : £5.00.

US subscription: \$150 per
annum. Single copies, including
back numbers: \$13.00.

Published by
The Royal Aeronautical Society,
4 Hamilton Place,
London W1V 0BQ, England

ISSN: 0001-9240

PUBLISHED MONTHLY

Contents

- 1**
Captain A. Twomey
The economics of Shuttle
- 7**
Robert R. Lynn
Requirements and possibilities —
rotorcraft powerplants
- 17**
E. G. Schaschke
Stabilised surveillance payloads
- 20**
D. H. Shanks,
R. V. Barrett
Performance of aircraft
pneumatic tyres in soft soil
- 29**
A. Rothwell
An experimental investigation of
the post-buckled efficiency of
Z-section stringer-skin panels
- 34**
A. Yakhot, G. Ben-Dor,
Z. Rakib, O. Igra
A new approach to the solution of
the boundary layer equations of
an ideal compressible flow over a
flat plate
- 36**
Library reviews
and additions



Cover Picture

A Trident 3 Shuttle front aircraft ready for take-off at London Heathrow Airport, closely followed by its back-up aircraft. (See the first paper in this issue, by Captain Twomey.)

The Royal Aeronautical Society

FOUNDED 1866

INCORPORATED BY ROYAL CHARTER 1949

Patron: HER MAJESTY THE QUEEN

COUNCIL

President: P. A. HEARNE, MSc, DLC, CEng, FRAeS

President-Elect: J. T. STAMPER, MA(Cantab), FEng, FRAeS

Vice-Presidents:

CAPTAIN E. M. BROWN, CBE, DSC, AFC, MA, FRAeS, RN(Ret'd)
PROFESSOR M. G. FARLEY, CEng, FIMechE, FBIM, FIProdE, FRAeS
J. W. FOZARD, DCAe BSc(Hons), CEng, FIMechE, FRAeS

Past Presidents:

HANDEL DAVIES, CB, MSc, CEng, FAIAA, FRAeS
PROFESSOR L. F. CRABTREE, BSc, DIC, PhD, CEng, AFAIAA, FRAeS

Members:

C. ABELL, OBE, CEng, HonFSLAET, HonFRAeS
A. J. ADCOCK, BSc(Eng), AMRAeS
M. W. ANDERSON, MA(Cantab), CEng, MICE, MSAE, AFAIAA, FRAeS
F. AUSTIN, FRAeS (*President — Australia Division*)
R. G. AUSTIN, MSc, CEng, MAIAA, FRAeS (*Chairman, Rotorcraft Section*)
AIR CDRE F. R. BANKS, CB, OBE, HonCGIA, CEng, HonFAIAA, HonFRAeS, RAF (Ret'd)
A. E. M. BARTON, DFC, CEng, MRAeS
A. L. BLACKMAN, OBE, MA, FRAeS
M. J. BRENNAN, BSc, CEng, FIMechE, FRAeS
F. A. BRITAIN, AMRAeS (*President — New Zealand Division*)
DR P. H. CALDER, OBE, BSc, ACGI, PhD, CEng, MRAeS
I. B. CRIPPS, MRAeS, (*Chairman — Branches Committee*)
J. L. CROWDER, MA, CEng, FMIS, MRAeS (*Chairman — Astronautics and Guided Flight Section*)
N. FALCONER, MRAeS
R. J. FRITZ, CEng, FRAeS (*President — Southern Africa Division*)
DR W. F. HILTON, PhD, DSc, CEng, AFAIAA, FIERE, FRAeS
DR G. S. HISLOP, CBE, HonDSc, PhD, BSc, ARCST, FEng, FIMechE, FRSA, FRSE, FRAeS
A. S. HUGHES, CEng, MRAeS (*Chairman — Branches Committee*)
T. H. KERR, BSc, FRAeS
D. KNIGHT, BSc(Eng) (*Chairman — Graduates' and Students' Section*)
B. P. LAIGHT, OBE, MSc, CEng, MIMechE, FRAeS
F. J. LOW, MRAeS
COLMAN MYERS, MRAeS, (*President — Zimbabwe Division*)
G. K. C. PARDOE, BSc(Eng), DLC, CEng, FBIS, FRAeS
AIR MARSHAL SIR CHARLES PRINGLE, KBE, MA, FEng, FRAeS, FBIM, RAF(Ret'd)
D. J. RICHER, MSc, BSc
G. T. WANSBROUGH-WHITE, AMRAeS

Officers:

Hon. Treasurer: C. F. HUGHESDON, AFC, FRAeS
Solicitor: C. L. BYWATERS, Associate RAeS
Secretary: E. M. J. SCHAFFTER, MA, CEng, FRAeS