

ARTICLES

- 123 Evaluation of Systematic Surface Evidence for Pottery Production in Veracruz, Mexico
Barbara L. Stark and Christopher P. Garraty
- 145 The “Invisible” Maya: Minimally Mounded Residential Settlement at Itzán, Petén, Guatemala
Kevin J. Johnston
- 176 Immigration, Assimilation, and Status in the Ancient City of Teotihuacan: Stable Isotopic Evidence from Tlajinga 33
Christine D. White, Rebecca Storey, Fred J. Longstaffe, and Michael W. Spence

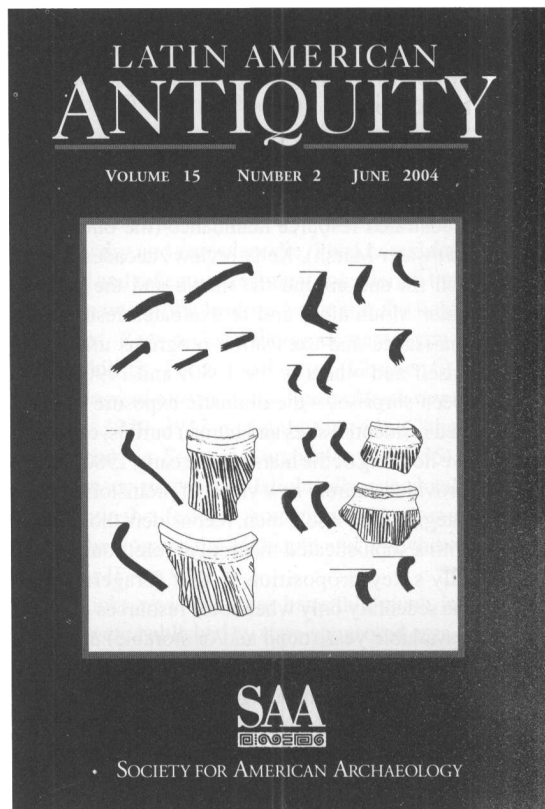
REPORTS

- 199 Prehistoric Salt Production at El Salado, Veracruz, Mexico
Robert S. Santley
- 222 Preclassic Obsidian Procurement and Utilization at the Maya Site of Colha, Belize
David O. Brown, Meredith L. Dreiss, and Richard E. Hughes

REVIEWS

- 241 The Sola Valley and the Monte Albán State: A Study of Zapotec Imperial Expansion, by Andrew K. Balkan:
Andrew Workinger
- 243 Settlement Archaeology and Political Economy at Tres Zapotes, Veracruz, Mexico, edited by Christopher A. Pool
E. Christian Wells
- 244 The Postclassic Mesoamerican World, edited by Michael E. Smith and Francis F. Berdan
Timothy W. Pugh
- 246 Tropical Forest Archaeology in Western Pichincha, Ecuador, by Ronald D. Lippi
Michael A. Malpass

On the Cover: Coarse brown collared jars (from “Prehistoric Salt Production at El Salado, Veracruz, Mexico,” by R. S. Santley, page 207).



NOTICE TO AUTHORS

American Antiquity publishes original papers on the archaeology of the New World and on archaeological method, theory, and practice worldwide. Authors of papers on Latin American topics are encouraged to submit their work to *Latin American Antiquity*. Papers on Latin American archaeology addressing broad methodological, theoretical, or comparative issues may be accepted by either journal after consultation with the editors. Authors submit manuscripts to the editor for consideration as ARTICLES, REPORTS, COMMENTS, or FORUM essays. REVIEWS and BOOK NOTES are solicited by the respective associate editor. OBITUARIES should be submitted to the editor, *The SAA Archaeological Record*, for publication (see *SAA Bulletin* March/April 1996, p. 7, for further details).

Authors should submit an original and four copies of their manuscripts, including all figures, tables, references, and notes. Detailed information on policy, style, and technical matters of manuscript preparation is given in the "Editorial Policy, Information for Authors, and Style Guide for *American Antiquity* and *Latin American Antiquity*," which appeared in the October 1992 issue (57:749–770) and can be read on the World Wide Web at <http://www.saa.org/Publications/StyleGuide/styframe.html>.

The editor reserves the right to evaluate manuscripts (with or without peer review) for appropriate subject matter, quality, length, and compliance with the style guide. Manuscripts may be returned to authors if they fail to meet expectations or conform to these guidelines. Manuscripts are evaluated by the editor in consultation with peer referees, as appropriate. The editor has the final responsibility for all decisions regarding manuscripts. The review process generally takes a minimum of two to four months. Authors will be notified as soon as a decision is reached to accept (outright or with revisions) or reject a manuscript.

To ensure the prompt receipt and handling of manuscripts, please send them to the editor: Michael Jochim, 57 Mesa Rd., Department of Anthropology, University of California-Santa Barbara, Santa Barbara, CA 93106-7000.

ARTICLES

- 389 Land Use and an Archaeological Perspective on Socio-Natural Studies in the Wadi Al-Hasa, West Central Jordan
J. Brett Hill
- 413 Memory, Meaning, and Masonry: The Late Bonito Chacoan Landscape
Ruth M. Van Dyke
- 432 Long-Term Settlement History and the Emergence of Towns in the Zuni Area
Keith W. Kintigh, Donna M. Glowacki, and Deborah L. Huntley
- 457 *They Go Along Singing*: Reconstructing the Hopi Past from Ritual Metaphors in Song and Image
Emory Sekaquaptewa and Dorothy Washburn
- 487 Steatite Vessel Age and Occurrence in Temperate Eastern North America
James Truncer

REPORTS

- 514 Plazas as Architecture: An Example from the Raffman Site, Northeast Louisiana
Tristram R. Kidder
- 533 Chronology and Stratigraphy at Dust Cave, Alabama
Sarah C. Sherwood, Boyce N. Driskell, Asa R. Randall, and Scott C. Meeks
- 555 High Precision Measurement of Obsidian Hydration Layers on Artifacts from the Hopewell Site Using Secondary Ion Mass Spectrometry
Christopher M. Stevenson, Ihab Abdelrehim, and Steven W. Novak
- 569 Dental Caries, Prehistoric Diet, and the Pithouse-to-Pueblo Transition in Southwestern Colorado
Karen Gust Schollmeyer and Christy G. Turner II

COMMENTS

- 583 Of Parsimony and Archaeological Histories: A Response to Comment by Boyd
Jeffrey L. Hantman, Debra L. Gold and Gary H. Dunham
- 586 Additional Evidence for Gourd Floats on Fishing Nets
Jean L. Hudson

REVIEWS

- 588 An Island Archaeology of the Early Cyclades, by Cyprian Broodbank
Cheryl Ward
- 589 Classification Guide for Arrowheads and Spearpoints of Eastern Pennsylvania and the Central Middle Atlantic, by Jay F. Custer; Forest Farmsteads: A Millennium of Human Occupation at Winding Stair in the Ouachita Mountains, edited by Ann M. Early; Mortuary Behavior at Upper Nodena, by Rita Fisher-Carroll; and Historical Perspectives on Midsouth Archeology, by Martha Ann Rolingson
Bradley Lepper
- 590 Prehistory of the Carson Desert and Stillwater Mountains: Environment, Mobility, and Subsistence in a Great Basin Wetland, by Robert L. Kelly
Melinda Leach

On the Cover: Hafted bifaces recovered at Dust Cave (from "Chronology and Stratigraphy at Dust Cave, Alabama," by Sarah C. Sherwood, Boyce N. Driskell, Asa R. Randall, and Scott Meeks, page 545).

♻ The paper used in this publication meets the requirements of ANSI/NISO Z39.48-1992 (Permanence of Paper).