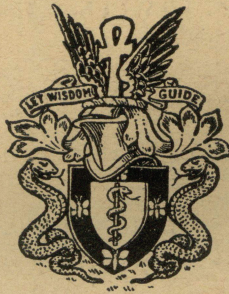


VOL. LXXXIX, NO. 374

JANUARY, 1943

THE JOURNAL OF MENTAL SCIENCE



BY AUTHORITY OF
THE ROYAL MEDICO-PSYCHOLOGICAL ASSOCIATION

MANAGING EDITOR
G. W. T. H. FLEMING

IN COLLABORATION WITH
Douglas McRae **Alexander Walk**

AND WITH THE ASSISTANCE OF

E. D. Adrian	C. J. McCarthy
F. C. Bartlett	P. K. McCowan
S. M. Coleman	Alfred Meyer
C. J. C. Earl	Lionel S. Penrose
A. Fleming	A. A. W. Petrie
F. L. Golla	E. T. O. Slater
E. G. Holmes	W. Stephenson

LONDON
J. & A. CHURCHILL, LTD.

Published Four times Yearly, price Nine Shillings net.

THE JOURNAL OF MENTAL SCIENCE

Communications on general editorial matters, including MSS. for publication, books for review and other printed matter, and communications regarding the *Epitome* section, including journals to be abstracted, should be sent to the **Managing Editor, Barnwood House, Gloucester.**

Communications and inquiries regarding sales should be addressed to the Publishers, **Messrs. J. & A. CHURCHILL, Ltd., 104, Gloucester Place, Portman Square, London, W.1;** and those regarding Advertisements to **Messrs. S. FRETWELL & Co., 92, Fleet Street, London, E.C.4.** Phone: Central 7961.

THE ROYAL MEDICO-PSYCHOLOGICAL ASSOCIATION

PUBLICATIONS

From MESSRS. ADLARD & SON, LTD.,
Bartholomew Press, Dorking.

"The Clinical Study of Mental Disorders." By J. R. LORD, C.B.E., M.D., F.R.C.P.E.
Price 6/-. Postage 4d.

The Charter and Bye-Laws of the Association. Price 1/-. Postage 1d.

Engraved Book-Plate of the Association. Price 1/-. Postage 1d.

Enquiry (History) Form, supplied in three sizes: 16 pp., 9 $\frac{1}{2}$ " x 6 $\frac{1}{4}$ "; 8 pp., 12 $\frac{3}{4}$ " x 8"; 4 pp., 16" x 10". Prices on application.

Card of Practical Instruction. Prices on application.

From MESSRS. J. & A. CHURCHILL, LTD.:

Catalogue of the Library of the Royal Medico-Psychological Association. 1928.
Price 2/-. Post free.

From BAILLIÈRE, TINDALL & COX:

"Handbook for Mental Nurses." 7th edn. 1923. Price 6/- net.

"Manual for Mental Deficiency Nurses." 1931. Price 6/- net.

"Occupational Therapy Brochure." 1938. Price 1/-.


From the SECRETARY, 11 Chandos Street, London, W. 1:

"Regulations and Rules for the Examinations for the Certificates of Proficiency in Mental Nursing and in Nursing Mental Defectives." Price 1/-.
Postage 1d.

"Syllabuses for the Examinations for the Certificates of Proficiency in Nursing Mental Defectives." Price 2d. each. Postage 1d.

Examination Papers, 1928-38 (reprinted). Price 1/6. Postage 1d.

Made and printed in Great Britain



**NEW
HALF STRENGTH
DIAL
TABLETS**

A copy of the Ciba Handbook No. 3, Ciba Hypnotics and Analgesics, containing full particulars of the pharmacology and clinical uses of Dial will be sent on request to members of the Medical Profession. Samples for Clinical trial are also available.

To meet the demand for this ideal general purpose barbiturate in sedative doses for the treatment of such conditions as restlessness, anxiety states, disorders of cardiac rhythm

HALF STRENGTH DIAL TABLETS

have been introduced containing 0.05 g. ($\frac{3}{4}$ gr.), tinted pink to distinguish them from the original tablets

Dosage: 1-2 tablets one to three times daily.

Tubes of 12 and bottles of 100

The original **FULL STRENGTH DIAL TABLETS** are still available for full hypnotic doses.

DIAL IS A BRITISH PRODUCT



THE LABORATORIES, HORSHAM, SUSSEX.

Telephone: HORSHAM 1234

Telegrams: CIBALABS, HORSHAM

ADLARD & SON

LIMITED

**BARTHOLOMEW PRESS
DORKING — SURREY**

**PRINTERS
OF THIS ::
:: JOURNAL**

COMPETITIVE ESTIMATES SUBMITTED PROMPTLY

FOUNDED IN 1766, the Firm has continued uninterruptedly **THROUGH MANY WARS** and is able to undertake **ALL CLASSES OF PRINTING**.

The Staff is Specially Trained in the production of all printed matter connected with **Private Hospitals and Homes**, Medical, Scientific and other Institutions.

Regd. Offices: 194/200 BISHOPSGATE, E.C. 2.

Tel.: DORKING 2696.

HOLME LACY HOSPITAL
HOLME LACY
HEREFORD ::

**FOR LADIES SUFFERING FROM
NERVOUS AND MENTAL DISORDERS.**

This Hospital is situated in 30 acres of garden with magnificent views of the Wye Valley, and homelike surroundings.

Every facility for specialized investigation and treatment provided.

Voluntary, Temporary and Certified patients received.

Terms from Four Guineas weekly.

For further particulars apply to the Physician-Superintendent.

Telephone: Burghill 4.

**BRYN
SCHOOL**

DOLGELLY

A SCHOOL AND HOME
approved by the Board of Control for
MENTALLY DEFECTIVE
BOYS

BEAUTIFULLY SITUATED IN THE
HEART OF NORTH WALES

ELIXIR · GABAIL

(BROMO-VALERIANATE)

The Ideal Sedative in all Nervous Affections

Elixir Gabail combines the sedative action of Bromide and Chloral Hydrate with the nervine and anti-spasmodic deodorised Valerianate. Pharmaceutically it is as pleasant and palatable as it is efficacious from the therapeutic standpoint, the disagreeable odour and flavour of the Valerian having been completely removed without in any way impairing its therapeutic value.

In Hysteria and Psychasthenia it relieves nervous excitement and produces a calm state of mind that is conducive to rapid recovery. It is also of value in states of temporary emotional excitement, in Hypochondriasis and Melancholia.

Dosage: One tablespoonful in water twice or thrice daily. As a hypnotic: two tablespoonfuls in water at bedtime.

Supplied in bottles of 187 c.c. and in bulk for Hospital use.

Literature and Samples on request.

THE ANGLO-FRENCH DRUG Co. Ltd.
11-12, Guilford Street, London, W.C. 1

PORTABLE Electric Convulsant Therapy Set

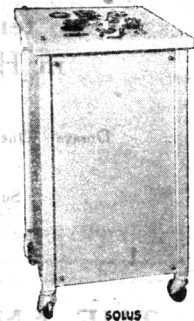


ABSOLUTE SAFETY

This Portable Model is arranged in convenient Attache Case.

Also supplied in Mobile Pedestal form, finished Cream Enamelled.

This Apparatus is British made throughout by



PEDESTAL MODEL

THE SOLUS ELECTRICAL CO., LTD.

X-Ray and Electro-Medical Apparatus Manufacturers

7, 9, 11 STANHOPE STREET

Telephone: EUSton 5596, 5597
grams: "EXRASOLUS," 'phone, London

LONDON, N.W.1

who will be pleased to send Descriptive Booklet to those interested.

MENTAL HOSPITALS, INSTITUTIONS, HOMES, ETC.

ST. ANDREW'S HOSPITAL

FOR NERVOUS AND MENTAL DISORDERS

NORTHAMPTON

President: THE MOST HON. THE MARQUESS OF EXETER, K.G., C.M.G., A.D.C.

Medical Superintendent: THOMAS TENNENT, M.D., M.R.C.P., D.P.H., D.P.M.

This Registered Hospital is situated in 130 acres of park and pleasure grounds. Voluntary patients, who are suffering from incipient mental disorders or who wish to prevent recurrent attacks of mental trouble, temporary patients, and certified patients of both sexes are received for treatment. Careful clinical, bio-chemical, bacteriological, and pathological examinations. Private rooms with special nurses, male or female, in the Hospital or in one of the numerous villas in the grounds of the various branches can be provided.

WANTAGE HOUSE

This is a Reception Hospital in detached grounds with a separate entrance, to which patients can be admitted. It is equipped with all the apparatus for the complete investigation and treatment of Mental and Nervous Disorders by the most modern methods; insulin treatment is available for suitable cases. It contains special departments for hydrotherapy by various methods, including Turkish and Russian baths, the prolonged immersion bath, Vichy Douche, Scotch Douche, Electrical baths. Plombières treatment, etc. There is an Operating Theatre, a Dental Surgery, an X-Ray Room, an Ultra-Violet Apparatus, and a Department for Diathermy and High-Frequency treatment. It also contains Laboratories for biochemical, bacteriological, and pathological research. Psychotherapeutic treatment is employed when indicated.

MOULTON PARK

Two miles from the Main Hospital there are several branch establishments and villas situated in a park and farm of 650 acres. Milk, meat, fruit and vegetables are supplied to the Hospital from the farm, gardens, and orchards of Moulton Park. Occupational therapy is a feature of this branch, and patients are given every facility for occupying themselves in farming, gardening and fruit-growing.

BRYN-Y-NEUADD HALL

The seaside house of St. Andrew's Hospital is beautifully situated in a Park of 330 acres at Llanfair-fechan, amidst the finest scenery in North Wales. On the North-West side of the Estate a mile of sea-coast forms the boundary. Patients may visit this branch for a short seaside change or for longer periods. The Hospital has its own private bathing house on the seashore. There is trout-fishing in the park.

At all the branches of the Hospital there are cricket grounds, football and hockey grounds, lawn tennis courts (grass and hard courts), croquet grounds, golf courses, and bowling greens. Ladies and gentlemen have their own gardens, and facilities are provided for handicrafts, such as carpentry, etc.

For terms and further particulars apply to the Medical Superintendent (Telephone No. 2356 and 2357 Northampton), who can be seen in London by appointment.

HEIGHAM HALL, NORWICH

PRIVATE MENTAL HOME

for Nervous and Mental illness. All forms of treatment available. Fees from 4 gns. per week upwards, according to requirements. Vacancies occasionally exist at reduced fees on the recommendation of the patient's own physician.

Apply to **Dr. J. A. SMALL.**

TELEPHONE: NORWICH 80.

LAVERTOCK HOUSE SALISBURY WILTS

PRIVATE MENTAL HOME FOR LADIES AND GENTLEMEN

Completely up to date. Lovely house and grounds (18 acres). Certified and uncertified cases taken. Facilities for going to the seaside.

ESTABLISHED OVER 200 YEARS

Apply to the Med. Supt. for illustrated brochure.

Tel.: SALISBURY 2612.

MENTAL HOSPITALS, INSTITUTIONS, HOMES, ETC.

CHEADLE ROYAL CHEADLE,
CHESHIRE

A Registered Hospital for MENTAL DISEASES, and its Seaside Branch, GLAN-Y-DON, Colwyn Bay, N. Wales.

THE object of this Hospital is to provide the most efficient means for the treatment and care of those of the Upper and Middle Classes suffering from MENTAL and NERVOUS DISEASES. The Hospital is governed by a Committee appointed by the Trustees of the Manchester Royal Infirmary.

VOLUNTARY, TEMPORARY and CERTIFIED PATIENTS RECEIVED.

For Terms and further information apply to the MEDICAL SUPERINTENDENT.

Telephone: GATLEY 2231.

CHISWICK HOUSE Phone: PINNER 234
PINNER,
MIDDLESEX

A Private Hospital for the Treatment and Care of Mental and Nervous Illnesses in Both Sexes.

A modern country house, 12 miles from Marble Arch, in attractive and secluded surroundings. Fees from 10 guineas per week inclusive.

Cases under certificate, Voluntary and "Temporary" Patients received or treatment.

DOUGLAS MACAULAY, M.D., D.P.M.

FENSTANTON, CHRISTCHURCH ROAD,
STREATHAM HILL, S.W. 2.

Emergency Address: "FIVE DIAMONDS," CHALFONT ST. GILES, BUCKS.

A Private Home for the Care and Treatment of a limited number of Ladies with Mental and Nervous Disorders. Certified, Temporary and Voluntary Patients received. Large Mansion with 12 acres of ground. Home-like surroundings.

Apply Dr. MADELINE LOCKWOOD, Resident Physician. Telephone: Little Chalfont 2046.

HAYDOCK LODGE, NEWTON-LE-WILLOWS,
LANCASHIRE

For the reception and treatment of PRIVATE PATIENTS of both sexes of the UPPER AND MIDDLE CLASSES suffering from Mental and Nervous Disorders, Alcoholism and Drug Addiction, either voluntary, temporary or under certificate. Patients are classified in separate buildings according to their mental condition.

Situated in park and grounds of 400 acres. Self-supported by its own farm and gardens in which patients are encouraged to occupy themselves. Every facility for indoor and outdoor recreation. For terms, prospectus, etc., apply MEDICAL SUPERINTENDENT.

Telegraphic Address: "Street," Ashton-in-Makerfield.

Phone: 7311 Ashton-in-Makerfield.

THE COPPICE, Nottingham, REGISTERED HOSPITAL
FOR MENTAL DISEASES.

President—THE RT. HON. THE LORD BELPER.

This Institution, for the reception of Private Patients of both sexes of the Upper and Middle Classes only, at moderate rates of payment, is beautifully situated in its own grounds about two miles from Nottingham. Electro-Convulsion Therapy, Prolonged Narcosis, etc., carried out. There is a branch Seaside Villa at Lowestoft. VOLUNTARY, TEMPORARY AND CERTIFIED PATIENTS ARE RECEIVED.

For Terms, etc., apply to Dr. WODDIS, Medical Superintendent.

Telephone: NOTTINGHAM 64117.

CITY OF LONDON MENTAL HOSPITAL
Near DARTFORD, KENT.

Ladies and Gentlemen received for treatment under certificates, or without certification as either VOLUNTARY or TEMPORARY PATIENTS, at a weekly fee of £2 : 9 : 0 and upwards.

APPLY MEDICAL SUPERINTENDENT.

TELEPHONE: DARTFORD 2901
2902

The Psycho-Somatic Approach

MODERN medicine recognizes that mild depressions are frequently responsible for vague functional ailments which are none the less real because they have no demonstrable organic basis. The physical manifestations of such depressive states are amazingly varied. The first therapeutic objective may well be the elimination of the underlying psychoneurosis, and 'Benzedrine' Tablets, with their strikingly beneficial effect on mood, will often accomplish this aim by producing a marked increase in mental alertness, energy, and ability to endure prolonged physical or mental strain.

'BENZEDRINE' TABLETS

MENLEY & JAMES LTD., 123 COLDHARBOUR LANE, LONDON, S.E.5

BT 135

COURT HALL, KENTON, near EXETER

FOR THE TREATMENT OF EIGHT LADIES, VOLUNTARY, TEMPORARY AND CERTIFIED PATIENTS

CLIFFDEN, TEIGNMOUTH

FOR EARLY AND CONVALESCENT CASES
Recreational Therapies are held daily by Skilled Leaders

The house stands high, with spacious balconies and extensive views of the South Devon Coast. Beautiful garden. Own Dairy in 25 acres. Private road to beach.

There is also a charming house

EBWORTHY, MANATON, DARTMOOR

situated in 20 acres, 1,100 ft. up for bracing moorland air.

Resident Physicians :

BERTHA M. MULES, M.D., B.S. **ANNE S. MULES, M.R.C.S., L.R.C.P.**

Telephones : STARCROSS 59 and TEIGNMOUTH 289.

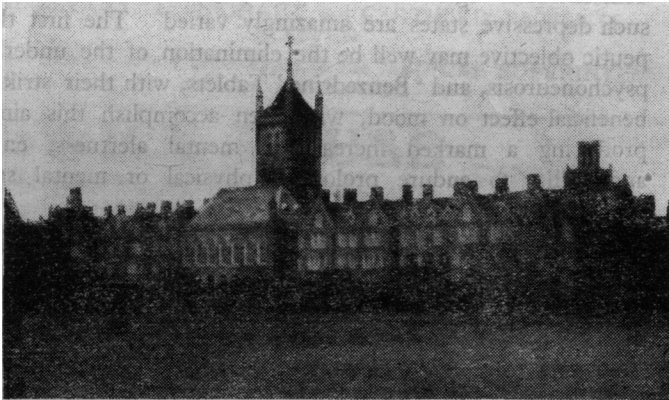
MENTAL HOSPITALS, INSTITUTIONS, HOMES, ETC.

Holloway Sanatorium

VIRGINIA WATER

**A REGISTERED HOSPITAL for the Treatment of
MENTAL DISORDERS of the EDUCATED CLASSES**

Founded by THOMAS HOLLOWAY in 1885



This Institution is situated in a beautiful and healthy locality within easy reach of London. It is fitted with every comfort. Patients can have Private Bedrooms and Special Nurses as well as the use of General Sitting Rooms, at moderate rates of payment. Voluntary Patients can be admitted. There is a Branch Establishment at CANFORD CLIFFS, BOURNEMOUTH, where Patients can be sent for a change and be provided with all the comforts of a well-appointed home.

For Terms apply to The RESIDENT MEDICAL SUPERINTENDENT,
St. Ann's Heath, Virginia Water, SURREY

THE FLOWER HOUSE

PRIVATE MENTAL HOME BECKENHAM HILL ROAD, S.E. 6

War Address **WONHAM HOUSE** BAMPTON N. DEVON

Telephones: BAMPTON 5 and 112.

THIS PRIVATE HOME is for GENTLEMEN suffering from Mental and Nervous disorders both under Certificates and as Voluntary Patients.

During the war FLOWER HOUSE is occupying a beautiful mansion in the Exe River Valley. Complete range of modern treatments, both organic and psychotherapeutic, are carried out by a medical staff of wide and varied experience.

Apply for full particulars and brochure to Dr. FRANK FINIGAN, Medical Superintendent, or the Resident Director, Mrs. E. à Beckett, Wonham House.

Trade
Mark

PHRENAZOL

Brand

Pentamethylenetetrazol

For the Shock (Convulsive) Treatment of Schizophrenia

The value of Phrenazol shock (convulsive) treatment of schizophrenia has been fully confirmed by clinical results. The method is safe and in practice difficulties and complications are rare.

Phrenazol is also available for use as a cardiac and respiratory stimulant and for the treatment of barbiturate poisoning and anæsthetic narcosis.

Phrenazol is supplied in 1 c.c., 3 c.c. and 5 c.c. ampoules, boxes of 3 and 6 ampoules; 25 c.c. rubber-capped vials; and in powder for preparing sterile solutions. Phrenazol Oral—bottles of $\frac{1}{2}$ fl. oz. and tablets 0.1 gm., tubes of 10 and bottles of 100.



Obtainable through all branches of

The
Boots
Chemists

Literature sent upon request

BOOTS PURE DRUG CO. LTD NOTTINGHAM