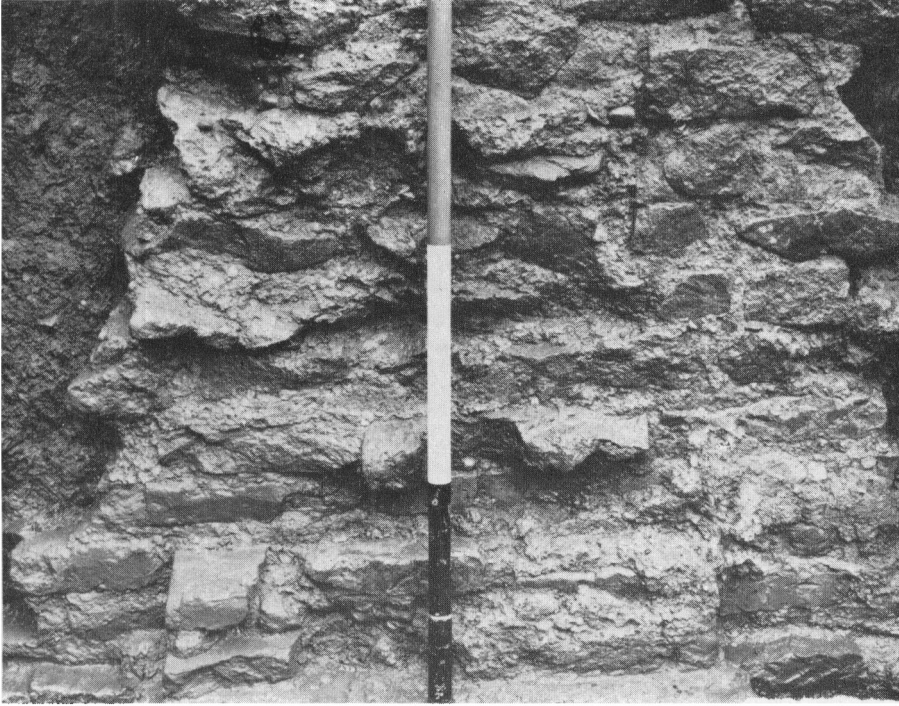


PLATE I



(Photo: M. Hebditch)

A. Leicester forum. West wall of Rooms 5 and 6 showing the broken surface after the removal of the partition wall in Period II; Holy Bones 1963 (p. 13).



(Photo: M. Hebditch)

B. Leicester forum. Junction between the partition wall (right) and the main wall at the south-east corner of Room 5; Holy Bones 1963 (p. 12).

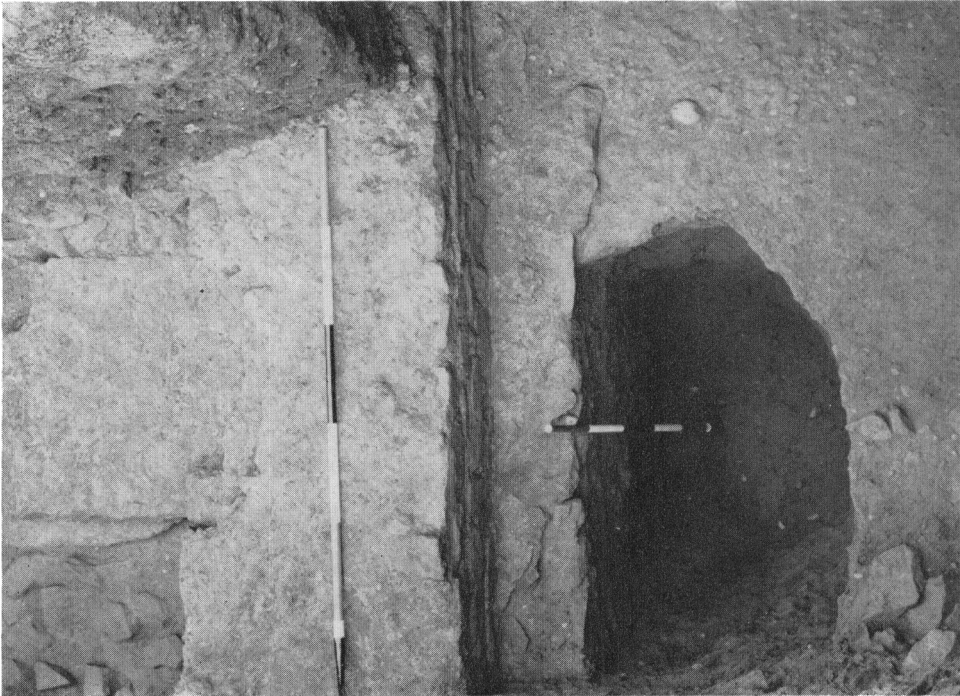
PLATE II



(Photo: M. Hebbitch)

B. Leicester forum. Void in street-metalling left by a tree; Great Central Street 1961 (p. 19).

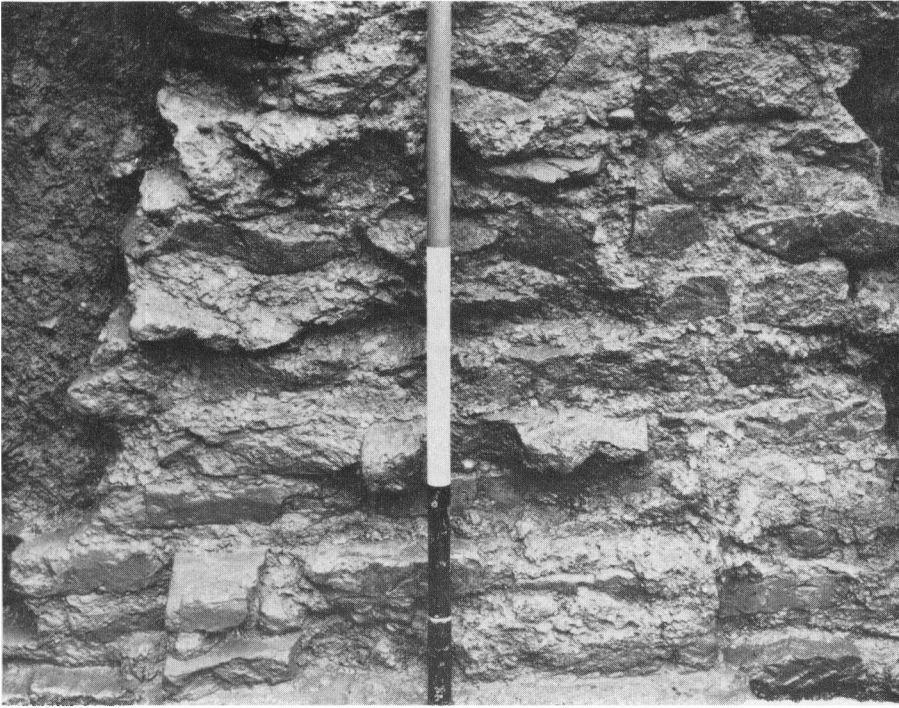
HEBBITCH AND MELLOR, FORUM AND BASILICA OF ROMAN LEICESTER



(Photo: M. Hebbitch)

A. Leicester forum. Wall bounding the north aisle of the basilica, and partition wall between Rooms 1 and 2; Great Central Street, 1961 (p. 12).

BRITANNIA, VOL. IV (1973)



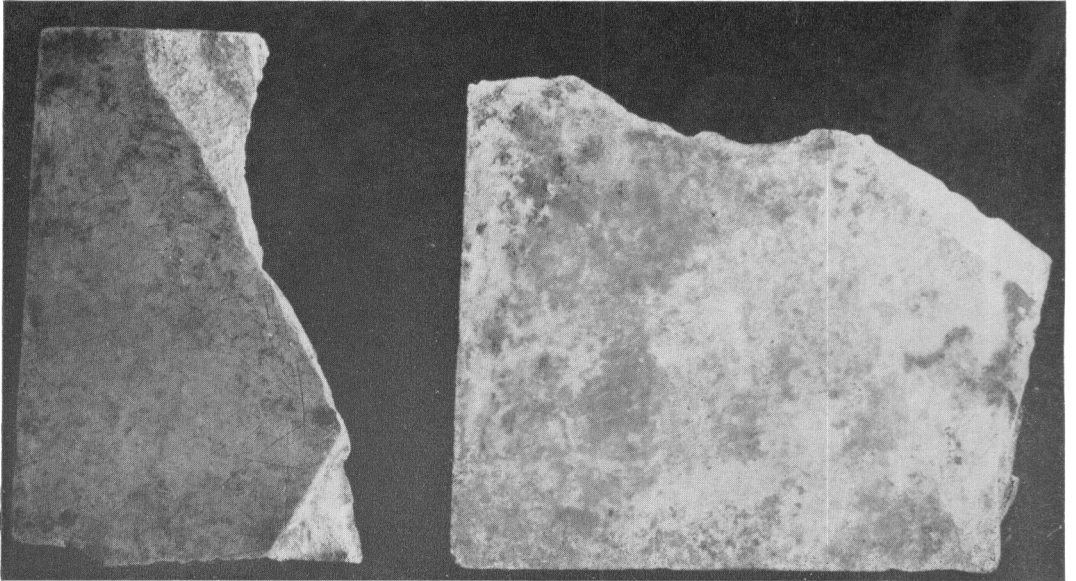
(Photo: M. Hebditch)

A. Leicester forum. West wall of Rooms 5 and 6 showing the broken surface after the removal of the partition wall in Period II; Holy Bones 1963 (p. 13).



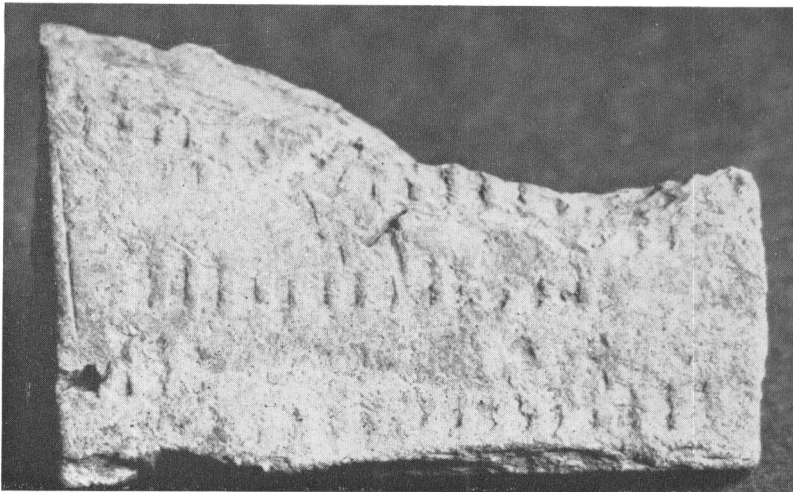
(Photo: M. Hebditch)

B. Leicester forum. North face of the foundation of the north portico; Great Central Street 1961 (p. 14)



(Photo: Leicester Museum)

A. Leicester forum. Front view of wall-veneer of polished hornstone (p. 49) (1 : 1.5).



(Photo: Leicester Museum)

B. Leicester forum. Back view of veneer showing keying pattern ($\frac{2}{1}$).



(Photo: A. L. Pacitto)

A. Brantingham villa. 'Lime kiln' near west wall of Room 1 (p. 87).



(Photo: A. L. Pacitto)

B. Brantingham villa. The S.E. corner of Room 1, showing damage to the mosaic caused by collapse into an earlier hypocaust (p. 87).



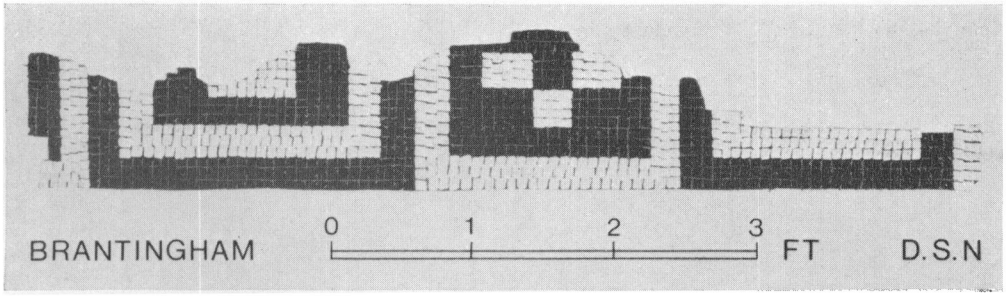
(Photo: Dept. of the Environment)
B. Brantingham villa. The mosaic pavement in Room I drawn and painted by D. S. Neal (p. 91).



(Photo: A. L. Pacitto)
A. Brantingham villa. Fragments of mosaic from the S. end of Room 3 (p. 89).

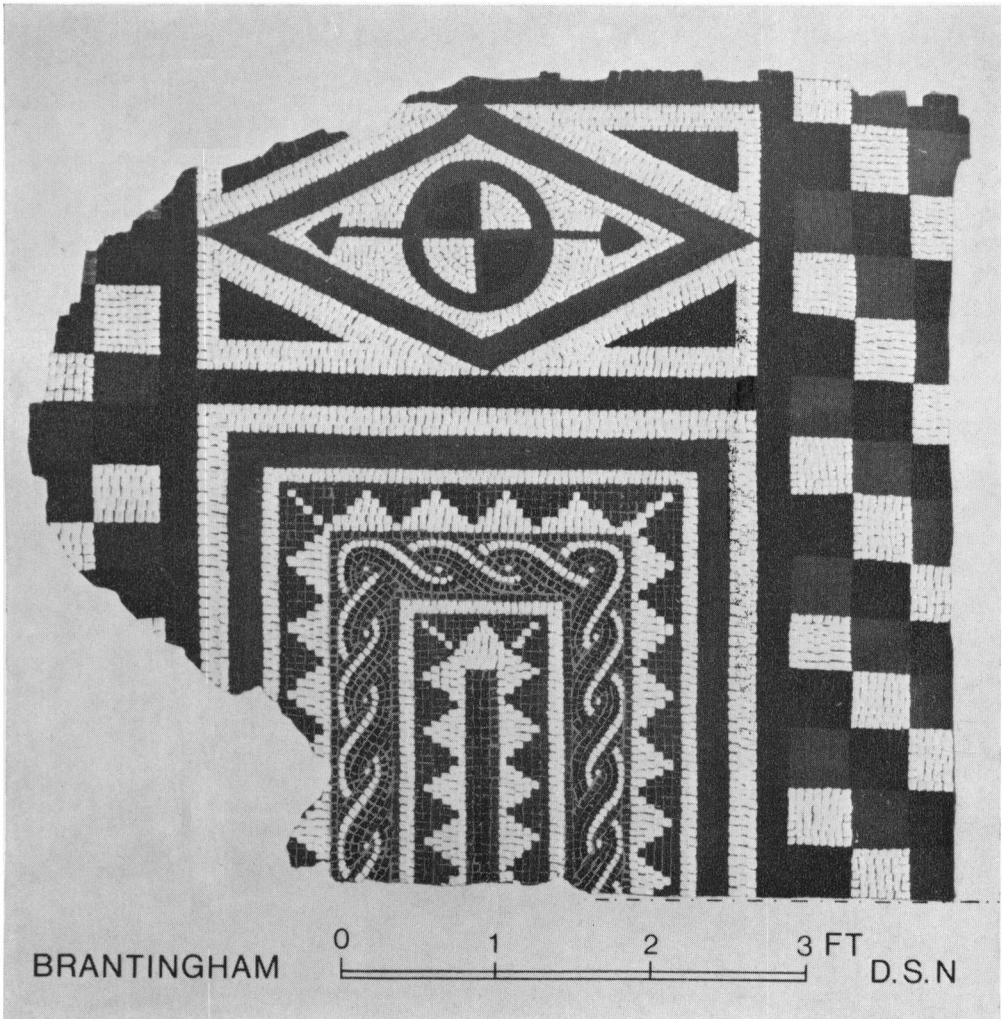
LIVERSIDGE, SMITH AND STEAD, BRANTINGHAM ROMAN VILLA

BRITANNIA, VOL. IV (1973)



(Photo: Dept. of the Environment)

A. Brantingham villa.: fragment of mosaic from Room 3, drawn by D. S. Neal (p. 91).



(Photo: Dept. of the Environment)

B. Brantingham villa: western end of the mosaic in Room 2, drawn by D. S. Neal (p. 91).

PLATE VIII



(Photo: A. L. Pacitto)

A. Brantingham villa. Isolated fragment of mosaic from Room 5 (? part of the mosaic in Room 2) (p. 91).



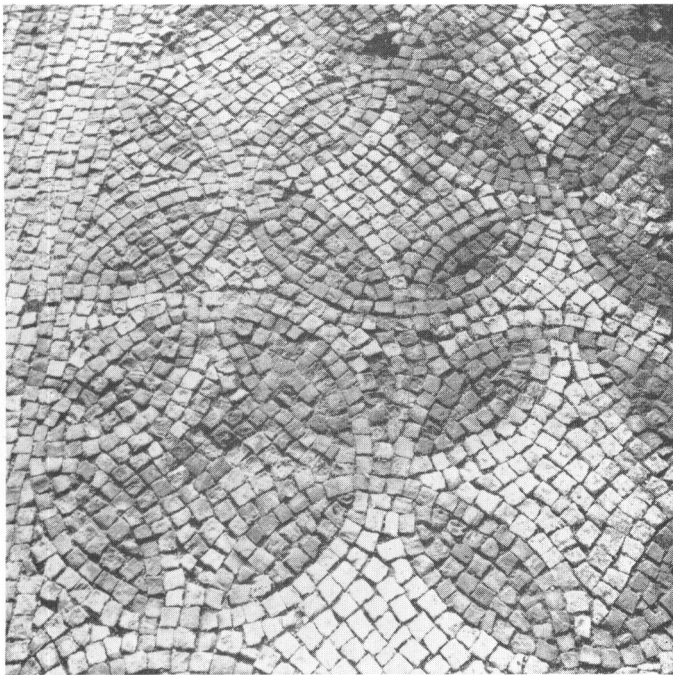
(Photo: A. L. Pacitto)

B. Brantingham villa. Western end of the mosaic in Room 2 (p. 91).



(Photo: A. L. Pacitto)

A. Brantingham villa. Mosaic in Room 1 (p. 91).



(Photo: A. L. Pacitto)

B. Brantingham villa. Mosaic in Room 1: flaw in the design at the west end (p. 94).



(Photo: A. L. Pacitto)
(Photo: A. L. Pacitto)

Brantingham villa. Mosaic in Room 1: the central bust (p. 92).



(Photo: A. L. Pacitto)

Brantingham villa. Mosaic in Room 1: reclining water-nymph (p. 92).

PLATE XII



A. Brantingham villa. Mosaic in Room 1: pelta motif (p. 93). *(Photo: A. L. Pacitto)*



B. Brantingham villa. Mosaic in Room 1: Cantharus (p. 97). *(Photo: A. L. Pacitto)*



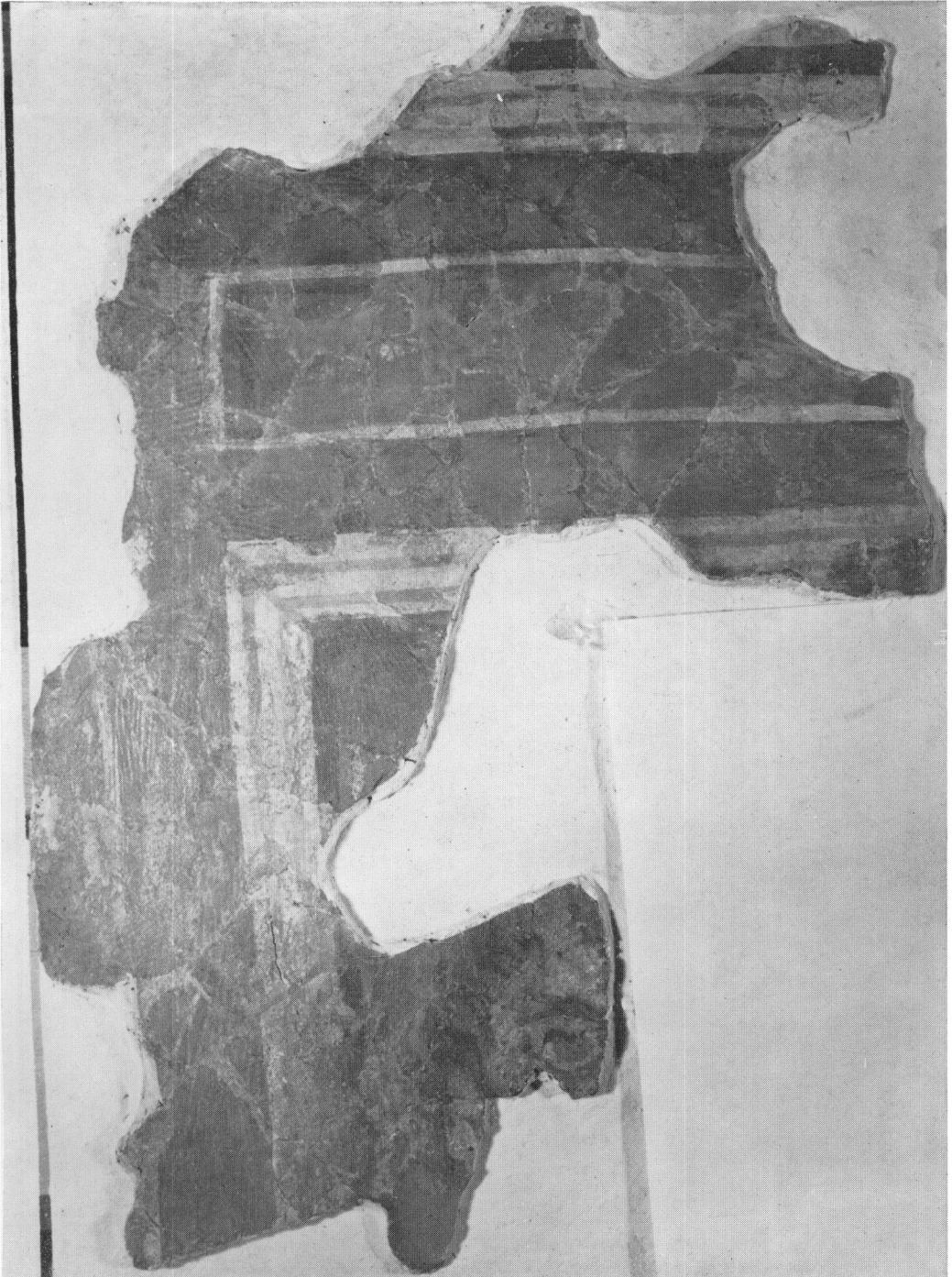
(Photo: A. L. Pacitto)

Brantingham villa. Mosaic in Room 1: a bust at the west end (p. 93).



(Photo: A. L. Pacitto)

Brantingham villa. Mosaic in Room 1: a bust in the north-east corner (p. 93).



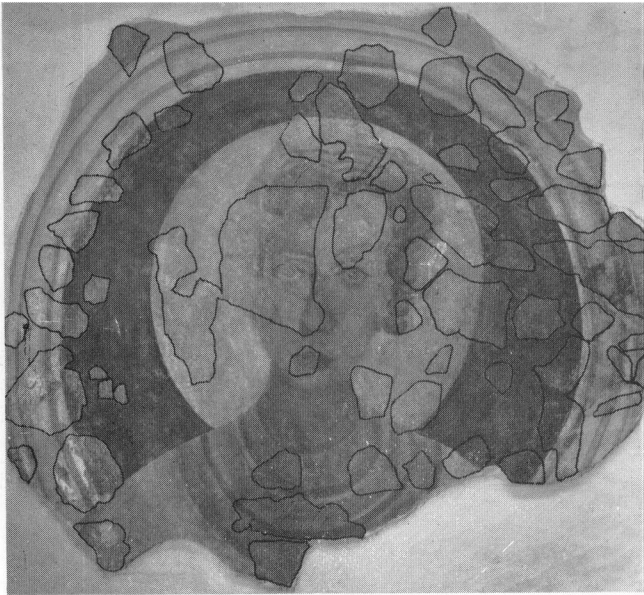
(Photo: Department of the Environment)

Brantingham villa. Painted plaster from Room 1, reconstructed by Dr. N. Davey (p. 99).



(Photo: Department of the Environment)

A. Brantingham villa. Painted plaster from Room 1, reconstructed by Dr. N. Davey (p. 101).



B. Brantingham villa. Photograph to illustrate the extent of restoration in PL. XVI A.



(Photo: by courtesy of Reading Museum)
Silchester. Head of Sarapis in Portland stone: height 32 cms (*c.* $\frac{3}{4}$) (p. 107).



1



2



3



4

(Photo: by courtesy of Reading Museum)

A. 1-4 Silchester. Views of the head of Sarapis shown in PL. XVII (c. $\frac{1}{8}$) (p. 107).



1



2



3

(Photos: by courtesy of the Trustees of the British Museum)

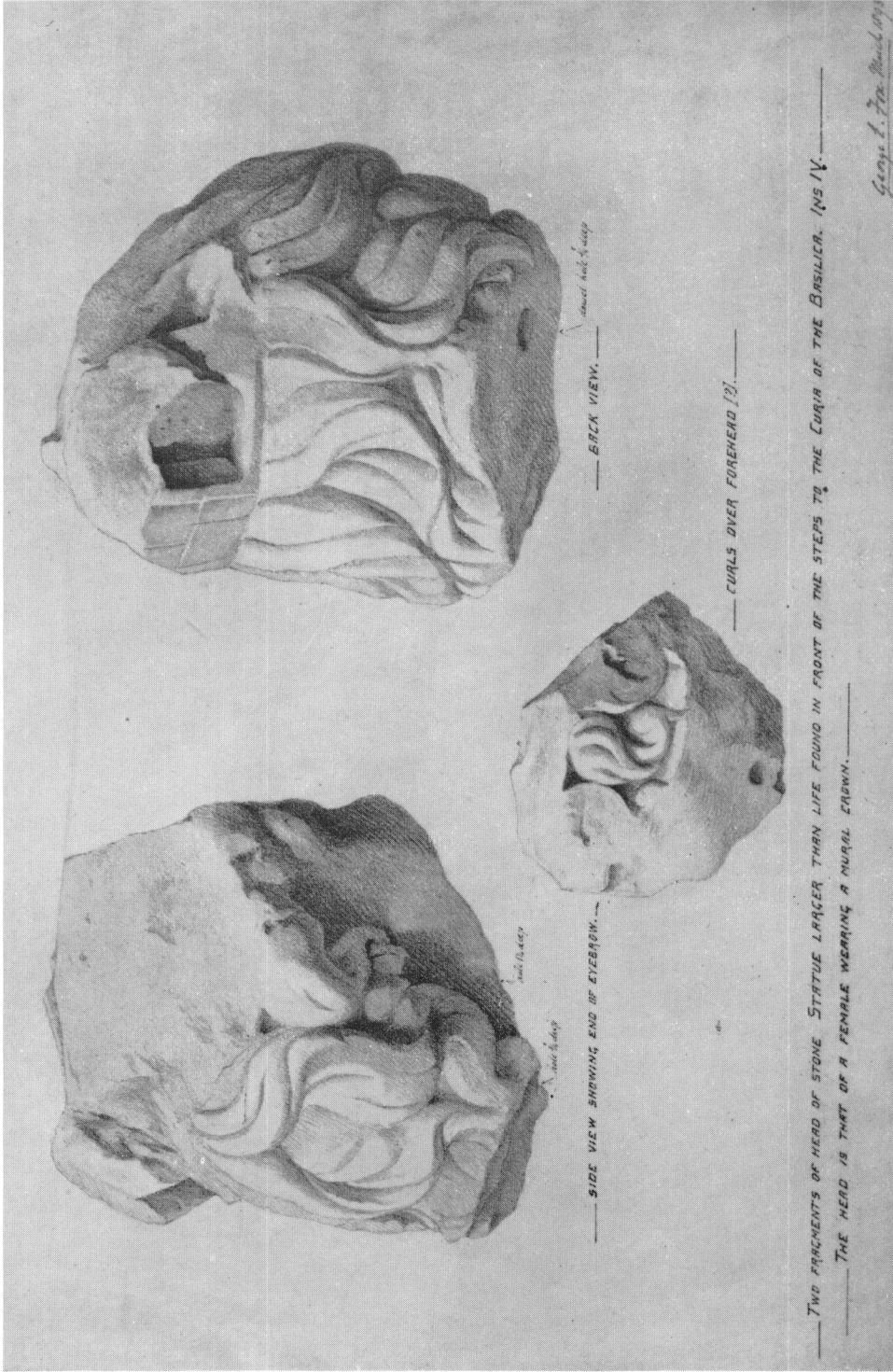
B. 1-2; Alexandrian tetradrachms of Nero, showing Sarapis and Zeus Olympios. 3: Alexandrian bronze coin of Marcus, showing Sarapis ($\frac{1}{4}$) (p. 110).

PLATE XIX



(Photo: by courtesy of Reading Museum)

Silchester. Views of fragmentary head of a Tutela in Portland stone. About 26 cm. overall (p. 108).



Silchester. Views of the fragmentary head of a Tutela in Portland stone shown in PL. XIX. From a drawing by G. E. Fox, by courtesy of the Society of Antiquaries of London (p. 108).

BRITANNIA, VOL. IV (1973) BOON, SARAPIS AND TUTELA. A SILCHESTER COINCIDENCE



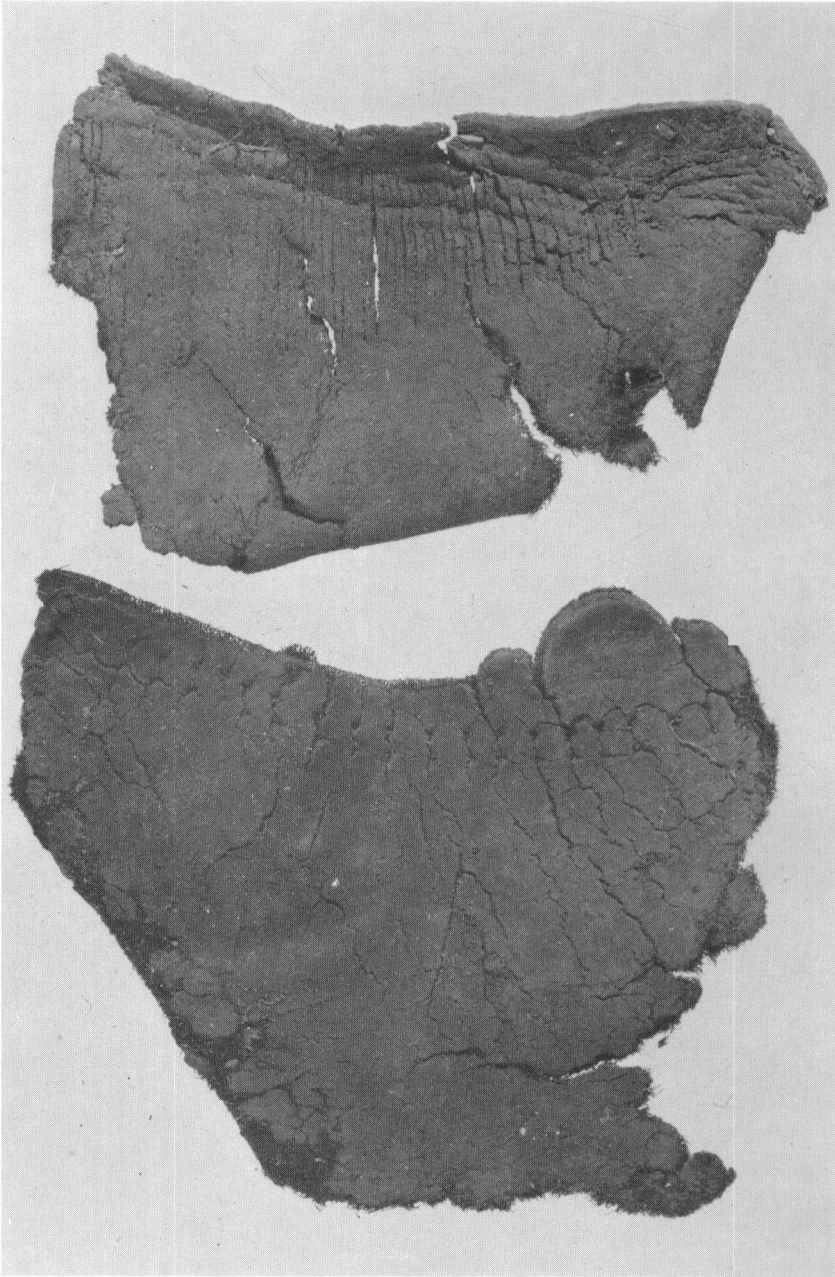
(Photo: D. Charlesworth)

A. Hardknott Roman fort. Section of intervallic road, showing corduroy of timbers in foreground (p. 141).



(Photo: Ancient Monuments Laboratory)

B. Hardknott. Leather shield-cover (No. 20) as found (p. 150).



(Photo: Ancient Monuments Laboratory)

Hardknott. Fragments of (shoe) uppers (No. 10) as found (²/₁) (p. 148).
(Note: No. 10B is above, and No. 10A below).



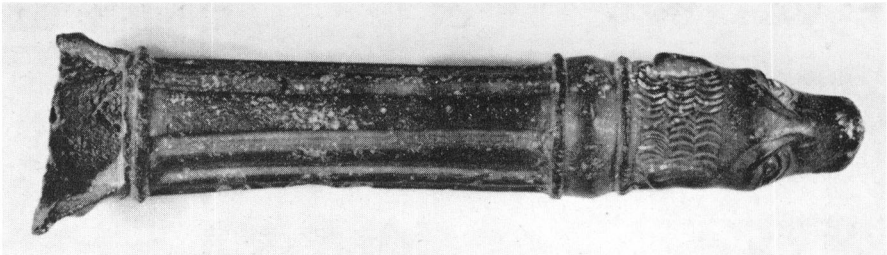
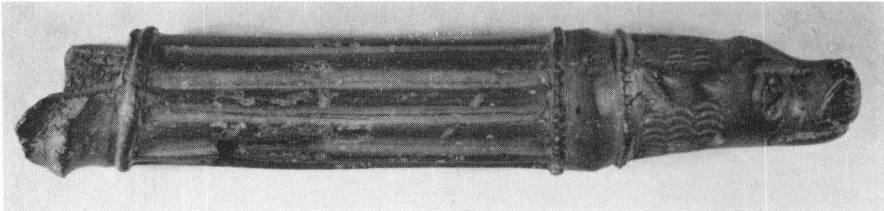
(Photo: Guildhall Museum)

London. Sole with nails in position, (top) inside, (bottom) under side ($\frac{1}{2}$) (p. 151).



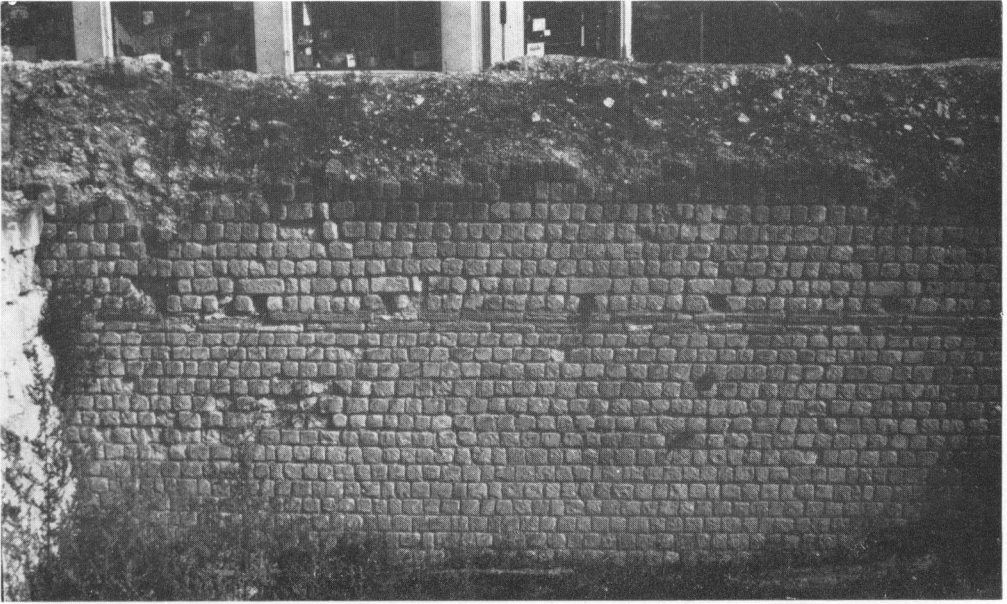
(Photo: Lincoln Museum)

A. The Whaplode Torc (1) (p. 153).



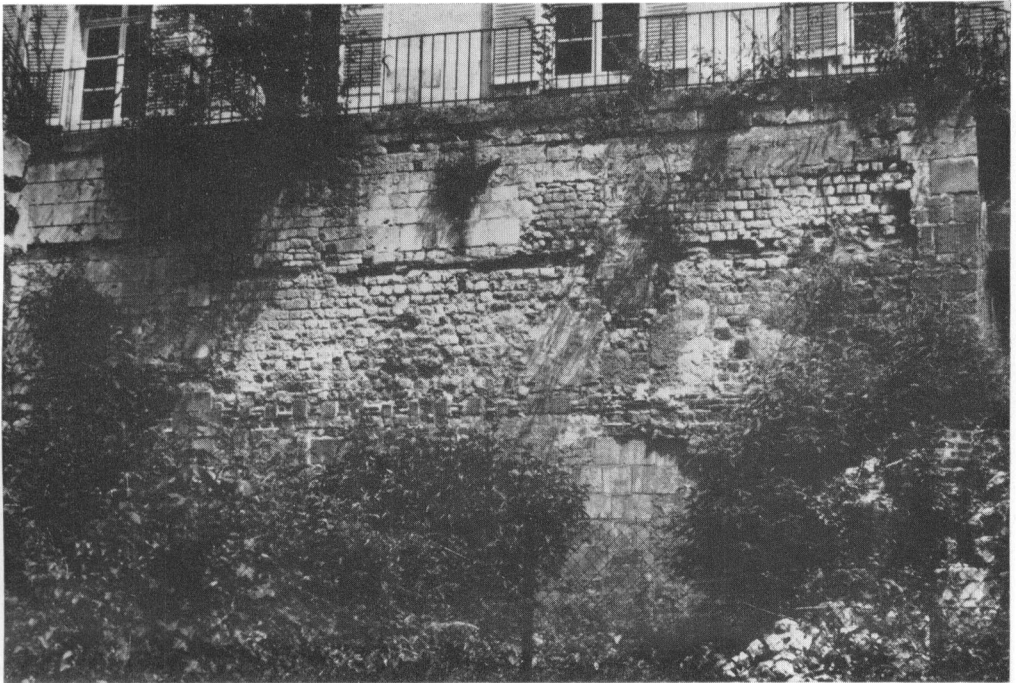
(Photo: Lincoln Museum)

B. The Dry Doddington patera-handle (1) (p. 155).



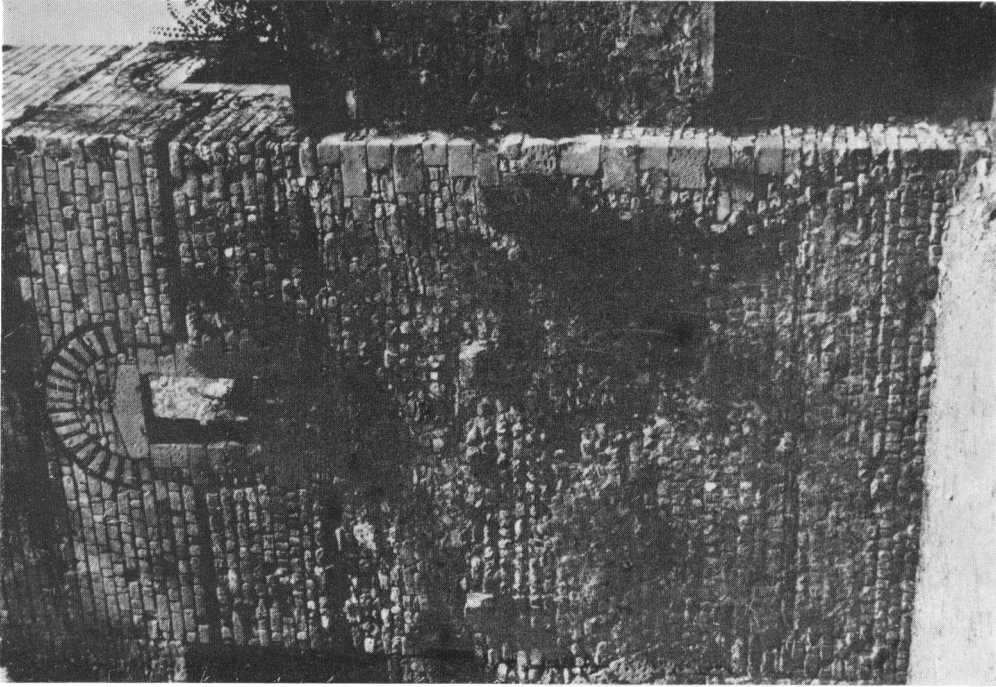
(Photo: S. Johnson)

A. Beauvais. Detail of facing of the interior of the late Roman wall on the east side of the city (p. 211).



(Photo: S. Johnson)

B. Soissons. Visible fragments of facing of the late Roman wall at the S.W. corner of the defences (p. 215).



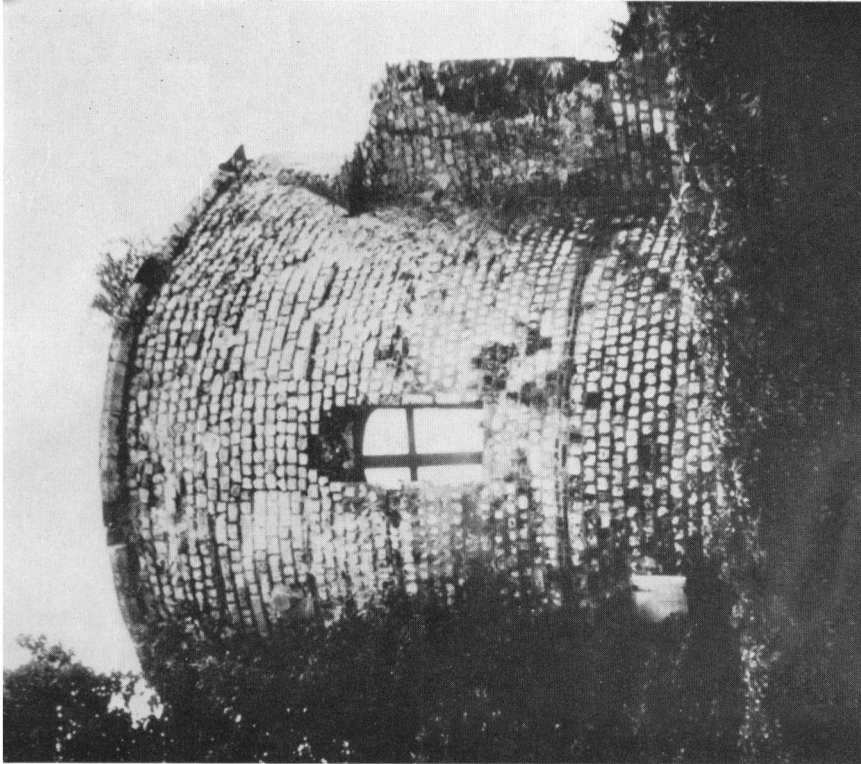
(Photo: S. Johnson)
B. Senlis. Back face of tower in Château gardens, showing Roman window-arch and inserted medieval window (p. 213).



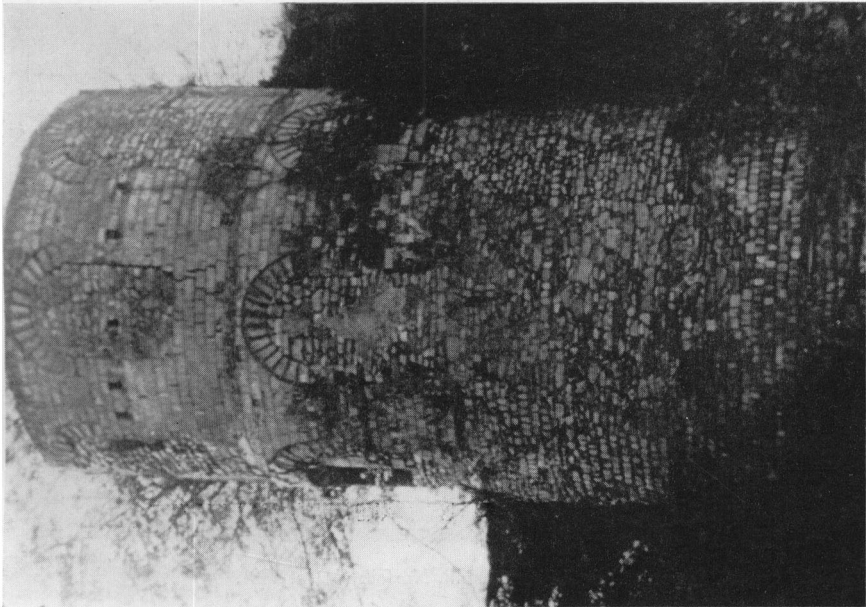
(Photo: S. Johnson)
A. Beauvais. Interior face of the late Roman wall on the north side of the city, showing rectangular offset of the Tour de St. Hilaire (right) (p. 211).

BRITANNIA, VOL. IV (1973)

JOHNSON, A GROUP OF LATE ROMAN CITY WALLS IN GALLIA BELGICA



(Photo: S. Johnson)
B. Beauvais. Exterior view of the Tour de St. Hilaire on the north wall (from the north) (p. 211).



(Photo: S. Frere)
A. Senlis. Exterior view of tower in Château gardens, from the north (p. 213).

JOHNSON, A GROUP OF LATE ROMAN CITY WALLS IN GALLIA BELGICA

BRITANNIA, VOL. IV (1973)



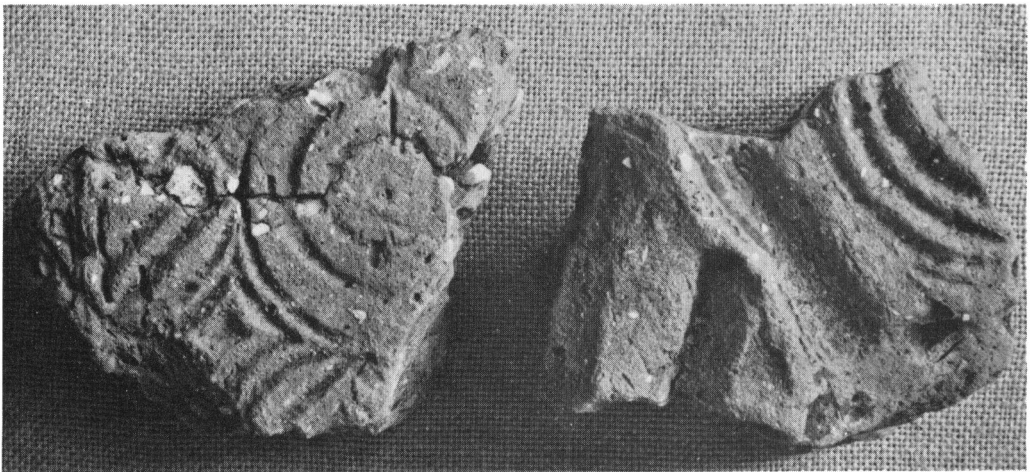
(Photo: University of Durham)

A. Legionary Antoninianus of Allectus ($\frac{2}{1}$) (p. 224).



(Photo: University of Durham)

B. Irregular Antoninianus with same obverse as in PL. XXVIII A ($\frac{2}{1}$) (p. 225).



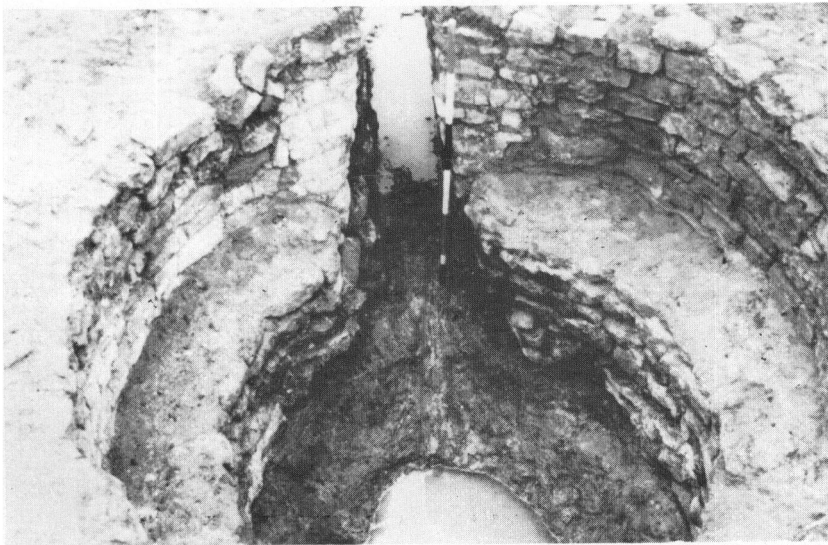
(Photo: A. Gregory)

C. Decorated daub from Ashill, Norfolk ($\frac{1}{2}$) (p. 268).



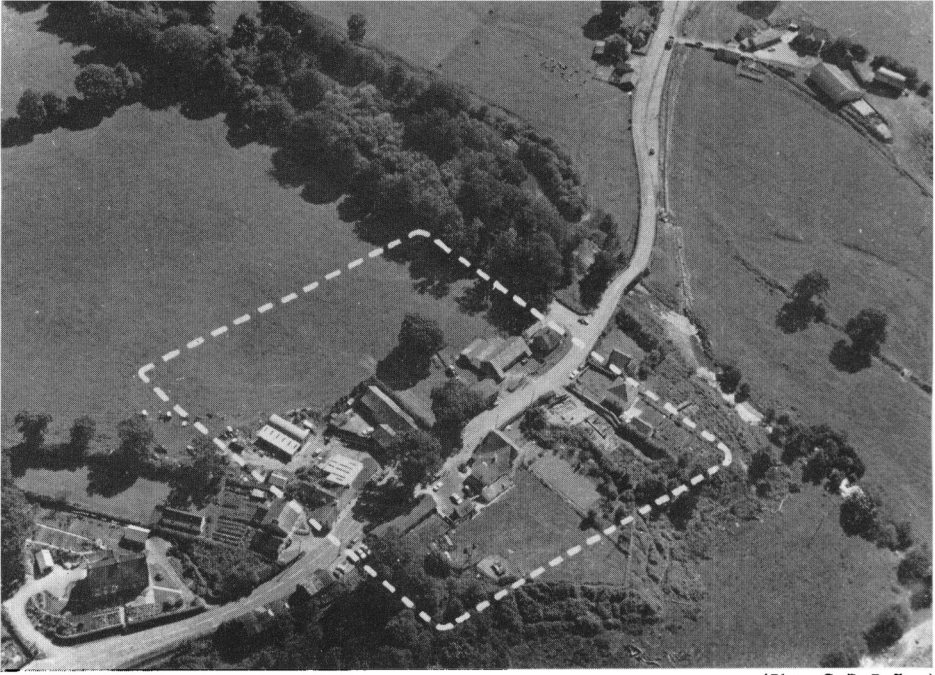
(Photo: G. Ager)

A. Sherd of stamped pottery bowl from Kelvedon, Essex ($\frac{2}{3}$) (p. 265).



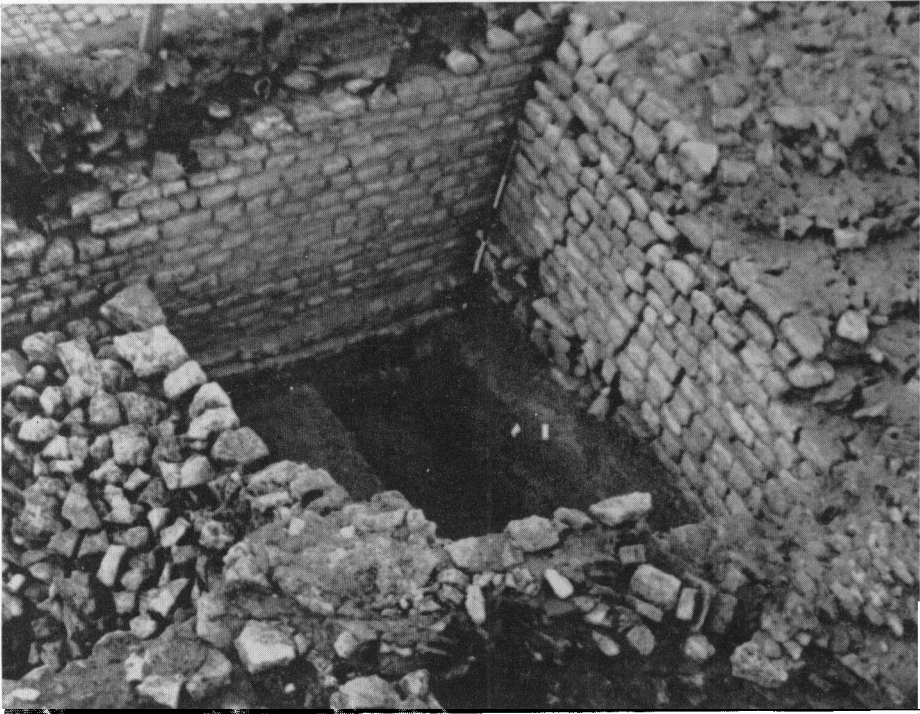
(Photo: D. A. Jackson)

B. Romano-British lime-kiln at Weckley, Northants. (p. 128 ff.). View of kiln chamber, showing ledge and junction with flue (top). Note intensely white-fired wall-portions, especially at junction. Shades of grey represent mainly grey with some greenish buff (on stone) or red (in marl only).



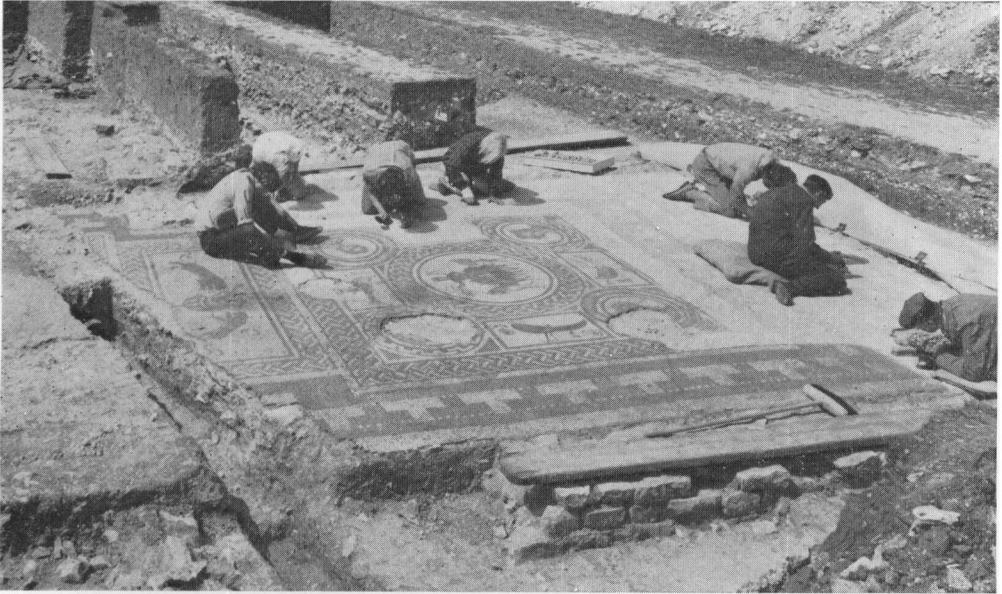
(Photo: G. D. B. Jones)

A. Pumpsaint, Carmarthens.: air-photograph showing site of newly discovered fort (p. 272).



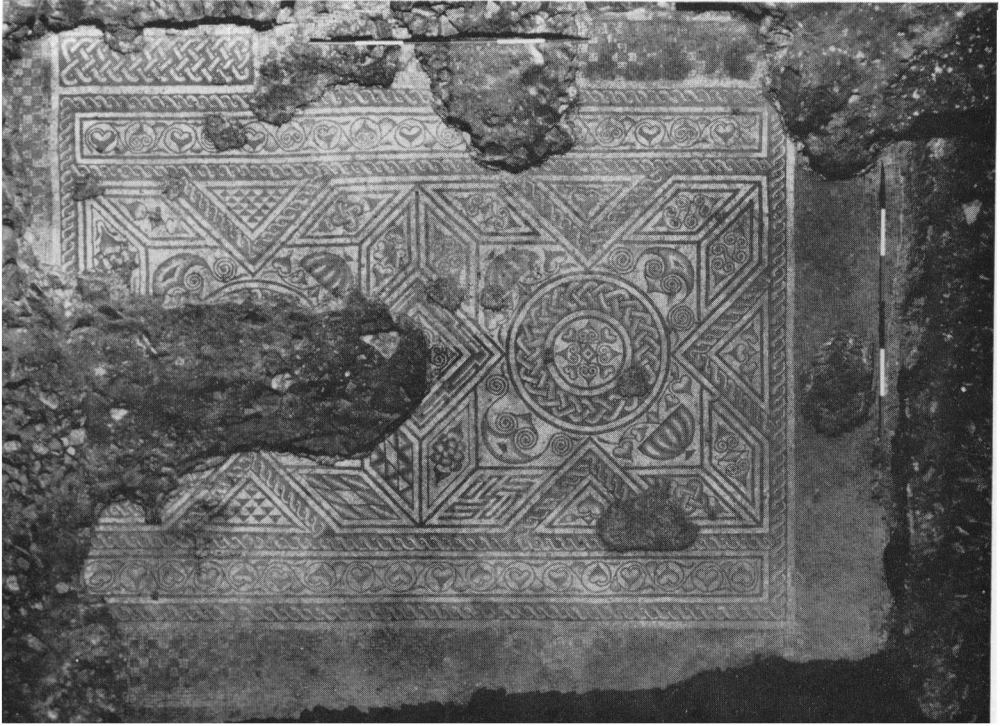
(Photo: Christina Colyer)

B. Lincoln (*Lindum*): interval-tower added to second-century town-wall at West Parade, on the site of the new Divisional Police Headquarters (p. 286).



(Photo: by courtesy of Hull Museums)

A. Rudston villa, Yorks. (E. Riding): mosaic pavement with charioteer (p. 281).



(Photo: E. Flatters)

B. Halstock villa, Dorset: mosaic pavement in Room 2: north at top (p. 316).



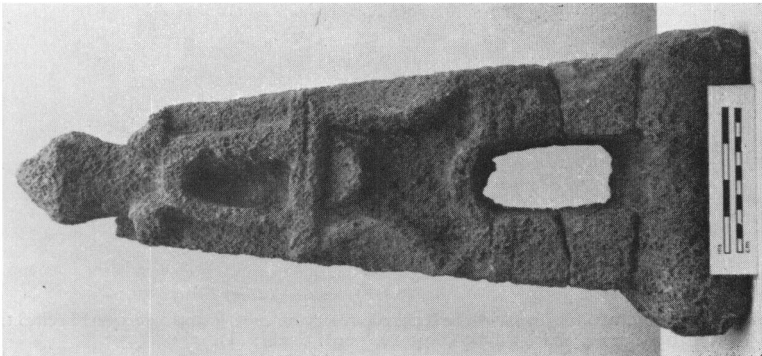
(Photo: Weymouth College of Education)

A. Dewlish villa, Dorset: Panel at west end of mosaic in Room 11 (p. 315).

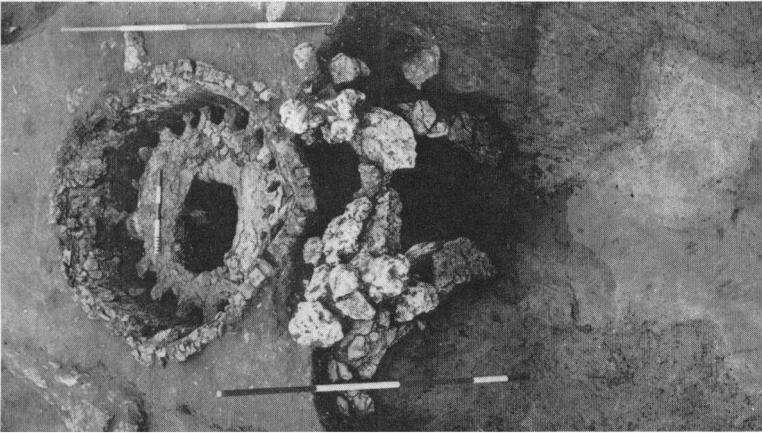


(Photos: Weymouth College of Education)

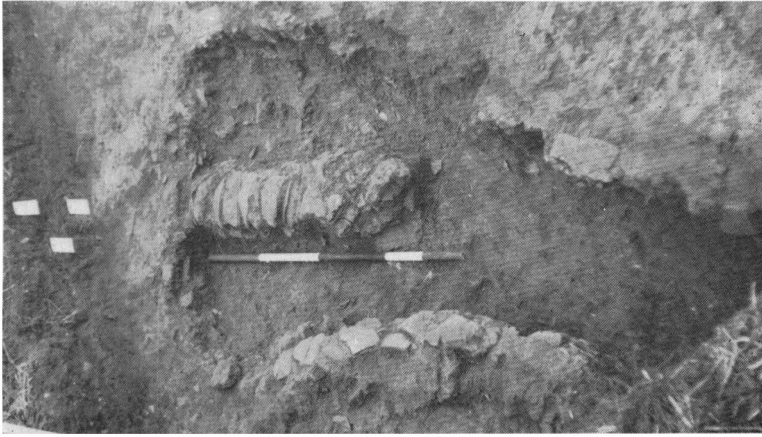
B. Dewlish villa, Dorset: east end of mosaic pavement in Room 11.



(Photo: *Weymouth College of Education*)
A. Dewlish villa, Dorset: Finial of Ham stone (p. 315)



(Photo: *B. Durrant*)
B. Churchill Hospital, Oxford: fourth-century pottery-kiln, looking east (p. 296).



(Photo: *S. A. Castle*)
C. Brockley Hill (*Sulloniatae*), London: second-century pottery-kiln (p. 306).



(Photo: B. J. Philp)

A. Horton Kirby, Kent: large storehouse on right bank of the R. Darent (p. 322).



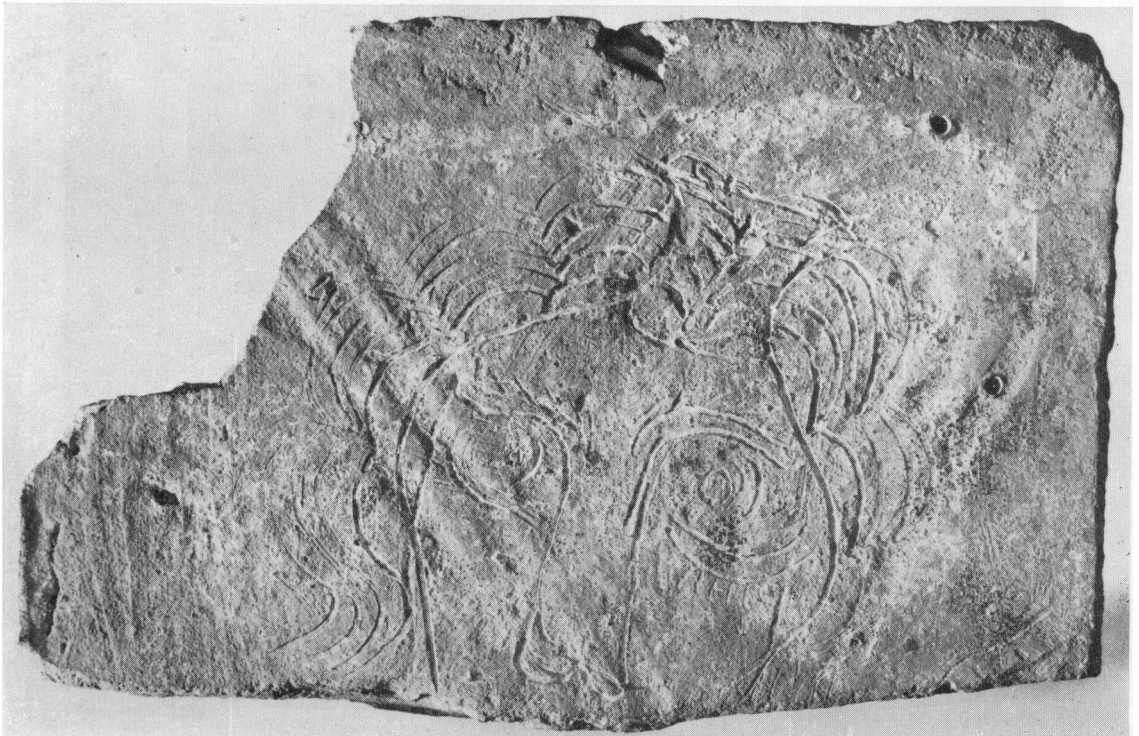
(Photo: by courtesy of Henry Hurst)

B. Gloucester (*Glevum*). Decorated bronze check-piece from a cavalry helmet, found in a pre-Flavian timber building at Kingsholm Close (p. 309). Scale: ($\frac{1}{2}$).



(Photo: National Museum of Wales)

A. Caerleon (*Isca*), Mon.: sandstone head, 480 mm high, probably from a tomb (p. 272). Scale: $\frac{1}{4}$.



(Photo: Farnham Museum)

B. Neatham, Hants.: tile with incised sketch of a female head (p. 317). Scale: $\frac{1}{2}$.

PLATE XXXVI



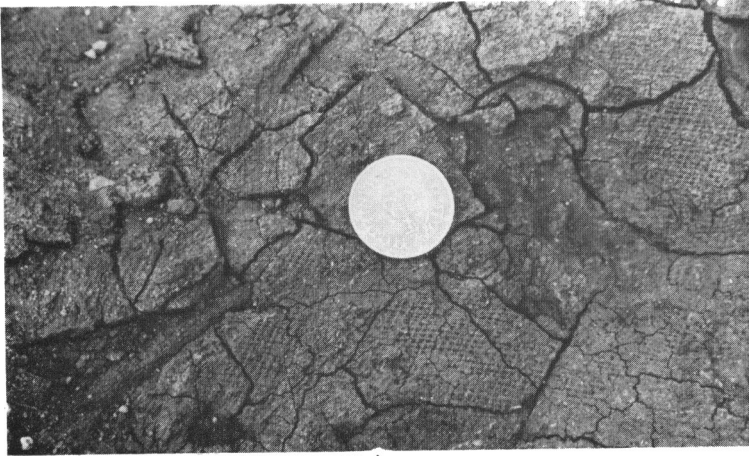
A.



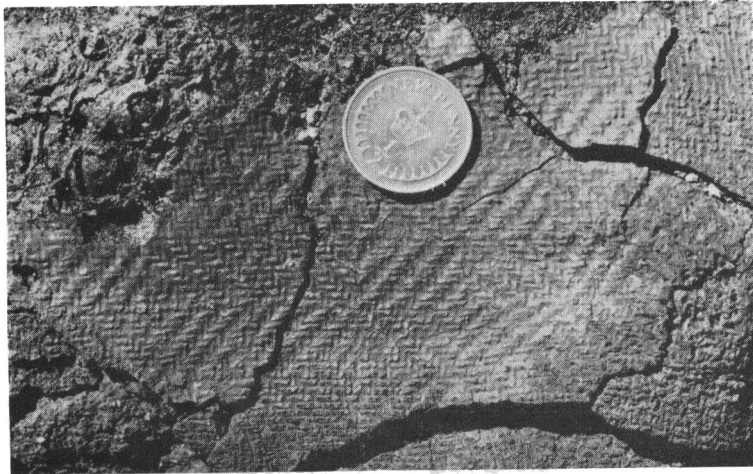
B.

(Photos: C. Shuttleworth)

Cirencester (Corinium Dobunorum), Glos. (p. 307). A. Altars and Sculptures found at Price's Row, Watermoor Road. B. Relief of *genii cucullati*.



A.



B.



C.

(Photos: P. Crummy)

Colchester (*Camulodunum*), Essex: carbonized remains of a bed found at Lion Walk (p. 302).

A. Plain weave on upper mattress.

B. Impression of diamond twill on upper mattress.

C. Surface of lower mattress, showing folds.

Scale: A, $\frac{7}{8}$; B and C $\frac{1}{2}$
(the coin is $\frac{1}{2}$ p).



A



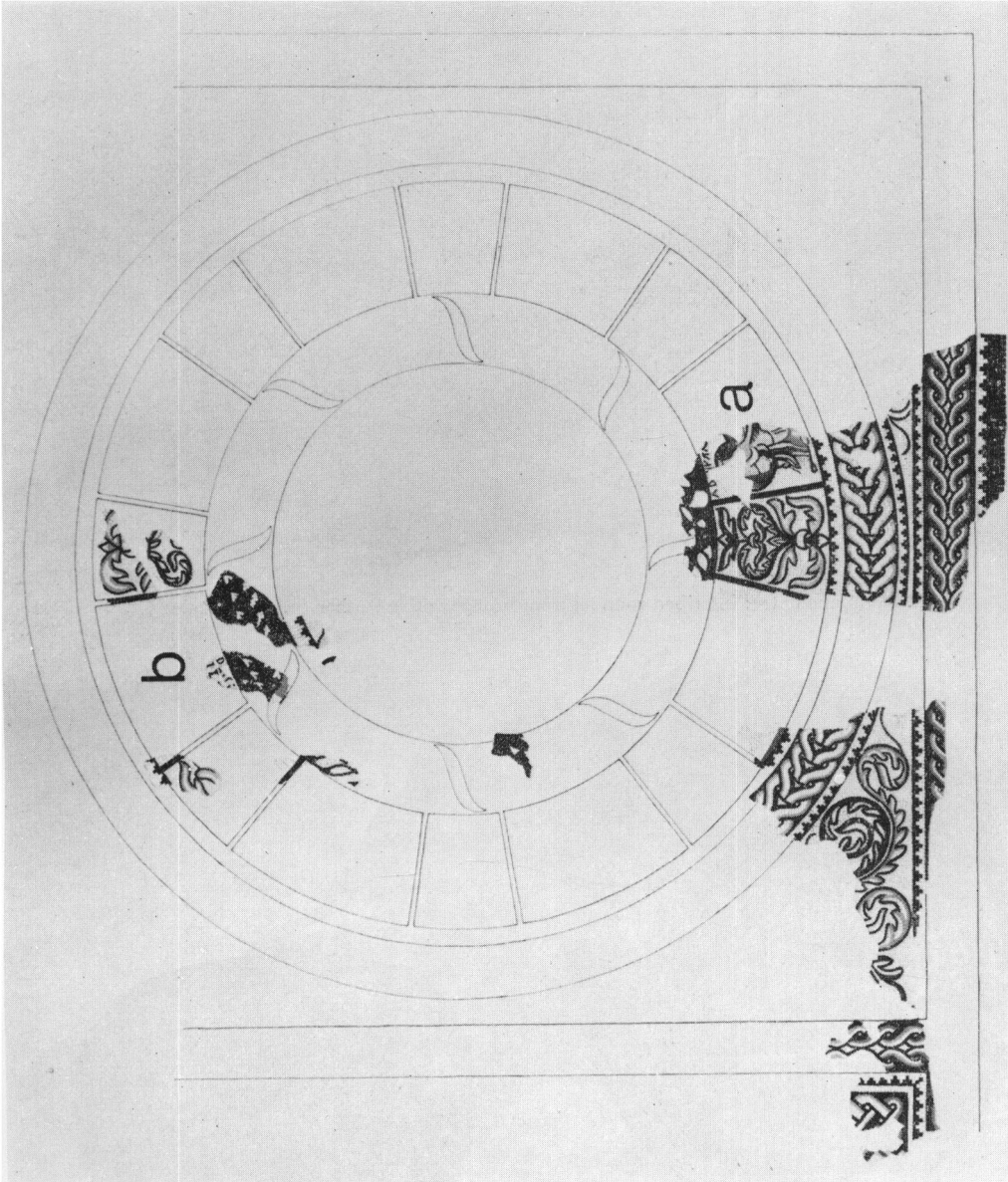
B



C

(Photos: by courtesy of the Vindolanda Trustees)

Altars from Chesterholm (*Vindolanda*) (p. 329). Scale: A ($\frac{1}{2}$), B ($\frac{1}{4}$), C ($\frac{1}{3}$).



(Drawing by D. S. Neal by courtesy of the Department of the Environment: Crown copyright reserved)

Mosaic with inscription from Colchester (p. 331). Scale: 1:30.

WRIGHT and HASSALL, ROMAN BRITAIN IN 1972

BRITANNIA, VOL. IV (1973)



(Photo: Dept. of Environment)

A. Godmanchester: inscribed roundel from bronze votive feather (p. 325). Scale: $\frac{2}{3}$.



(Photo: by courtesy of Martin Henig)

B. Akenham, Suffolk: inscribed intaglio (p. 333).
Scale: $\frac{3}{4}$.



(Photo: by courtesy of the Ashmolean Museum)

C. North Wraxall, Wilts.: inscribed cameo
(p. 334). Scale: $\frac{1}{4}$.



(Photo: by courtesy of G. Brodrigg)

A. Beauport Park, Sussex: floor-tile stamped CL BR and bearing impression of inscribed wooden comb similarly marked (p. 333). Scale: c. $\frac{1}{4}$.



(Photo: by courtesy of the Vindolanda Trustees)

B. Chesterholm (*Vindolanda*): lady's sandal, 228 mm long, with stamped inscription (p. 332).