

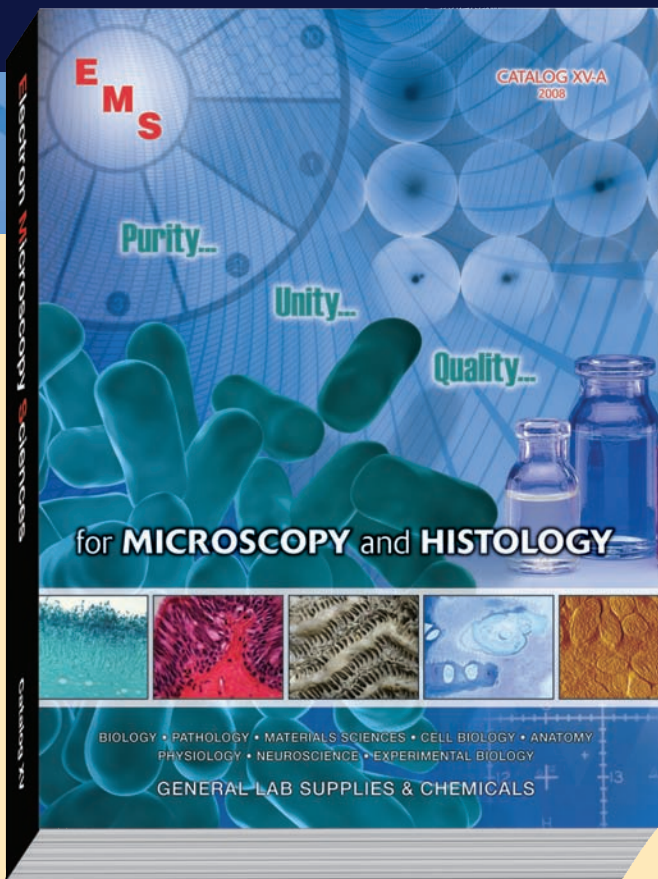
The new **2008-2010 EMS CATALOG** is now available!

Exacting Research demands only the **Highest Quality Products.**

Introducing the 2008–2010 EMS Catalog, your comprehensive source for chemicals, supplies, accessories, and equipment for Microscopy, Histology and all fields of biological and materials research.

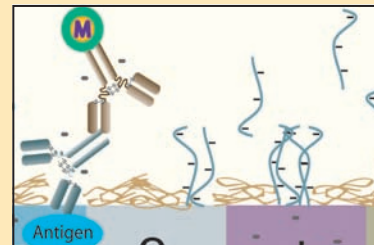
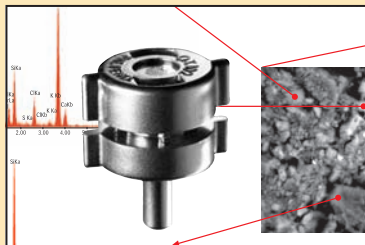
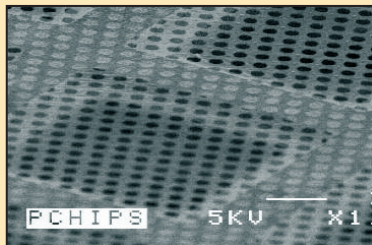
Featuring new and revolutionary products, including:

- C-flat™ Holey Carbon Grids for cryo-TEM
- Tools for Microsample Manipulation & Measurements
- WETSEM™ Capsules for Hydrated SEM Samples
- DuraSIN™ Substrates for TEM & X-ray
- Diatome Oscillating Diamond Knife
- Digital High Resolution Microscopes
- Ultra-Thin Carbon Tabs
- Plunge Freezer
- EMS 9000 Precision Pulsed Laboratory Microwave Oven
- State-of-the-Art Oscillating Tissue Slicers
- NioProbe and TipCheck for AFM
- Aurion ImmunoGold Reagents and Accessories
- EMS LYNX Tissue Processor
- MAG*I*CAL®
- EMS Carbon Coaters and Sputter Coaters



Your one-stop shop for the latest products and solutions for Microscopy and Histology!

Application Notes • More Technical Support • Enhanced Product Lines • Revolutionary Products



QuantomiX WETSEM™ • AURION Newsletters • Diatome Diamond Knives • C-flat™ Holey Carbon Grids

To request our new catalog, please call or write us today, or visit us online at www.emsdiasum.com

**Electron
Microscopy
Sciences**

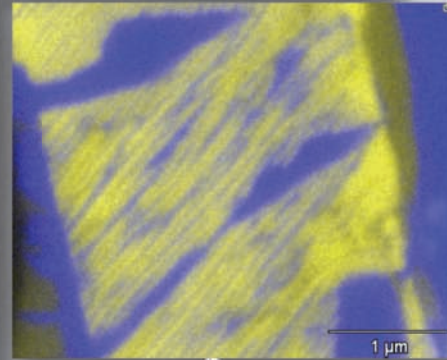
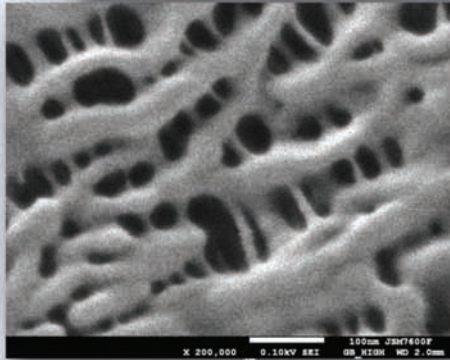
P.O. Box 550 • 1560 Industry Rd. • Hatfield, Pa 19440
(215) 412-8400 • Toll Free: 1-(800) 523-5874
Fax: (215) 412-8450 or 8452
email: sgkcck@aol.com • stacie@ems-secure.com
www.emsdiasum.com

You asked. We listened.

Ultrahigh Resolution Analytical Performance

Ultralow kV

Uncoated stretched polypropylene

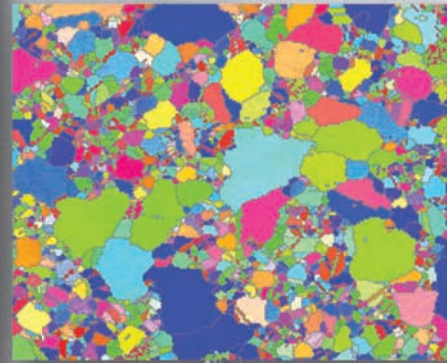


EDS/WDS

EDS map of TiO₂ in FeO_x with <100nm spatial resolution 30,000x

LABe

1-3 nm twinning in mineral BSE image

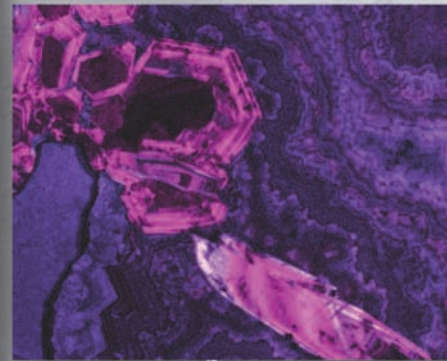
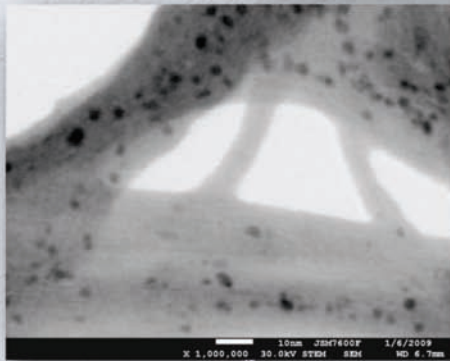


EBSD

Orientation map of Ni alloy

STEM

CNT with 1-3 nm Pt nanoparticles



CL

Quartz and zinc oxide

Seeing is believing!

Contact salesinfo@jeol.com to arrange a demo. For more information or to view a brochure visit www.jeolusa.com/7600F.

All magnifications as printed at 4 x 5 in.



JSM-7600F

Another
Extreme
Imaging
Solution

JEOL

Stability • Performance • Productivity
www.jeolusa.com • salesinfo@jeol.com
978-535-5900

Thermal FEG SEM