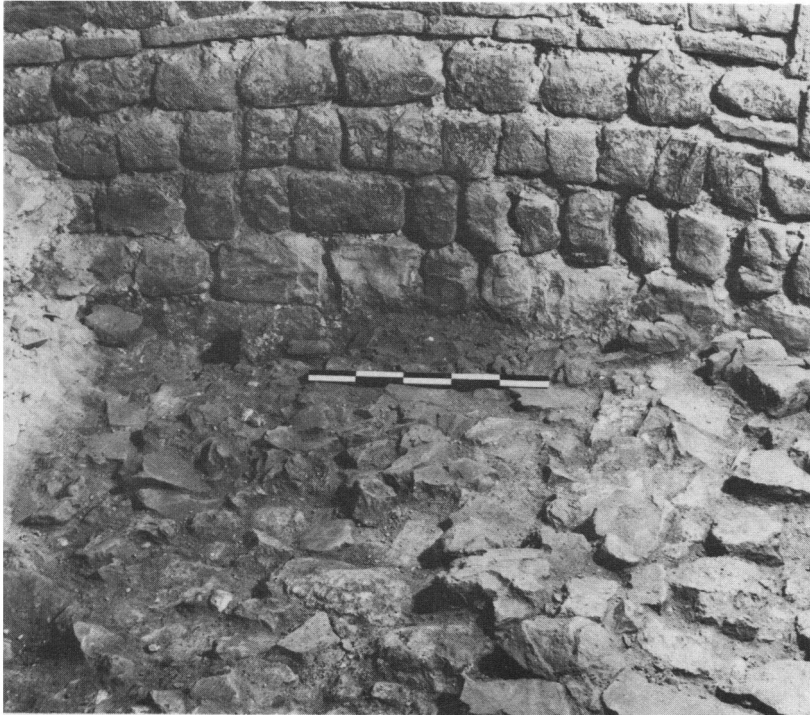


PLATE I



(Photo: Colchester and Essex Museum)

A. Colchester Castle Keep: View looking north, of part of the weathered and irregular surface of the tile and concrete raft, 15, exposed in the sub-crypt, 1977. Compare with the detailed plan, FIG. 5 (p. 9).



(Photo: Colchester and Essex Museum)

B. Colchester Castle Keep: The tile and concrete raft, 15, at the eastern extremity of the apse of the sub-crypt, showing how the mortar of the Norman wall seals the raft. The line of Section 2 is on the right of the picture. Compare with FIG. 5 (p. 9).

PLATE II



(Photo: Colchester and Essex Museum)

A. Colchester Castle Keep: Sondage cut through the tile and concrete raft against the north wall of the sub-crypt; Section 11, with which the photograph should be compared, is on the right of the picture (p. 10).



(Photo: T. C. Gall, April 1932)

B. Colchester Castle: The Roman base, 143, partly covered by the wall of the Norman (Period VIIB) forebuilding (p. 15).

PLATE III



(Photo: Cambridge University Collection of Air Photographs: copyright reserved)

Dalginross (Pertuis): crop-marks of Roman fort, looking SW, 21 July 1977. An outwork encloses the SE half of the fort (passing beneath the forecourt of a modern bungalow) (p. 54). Part of the adjoining labour-camp can be seen top left.

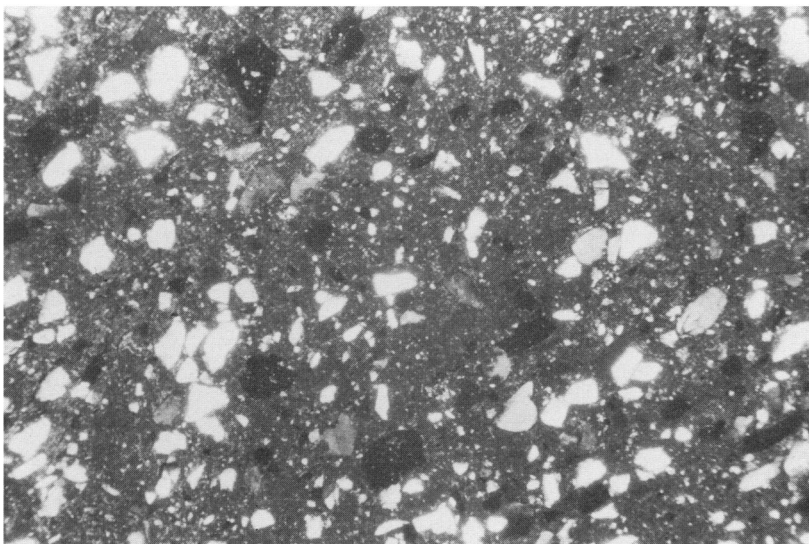
PLATE IV



(Photo: Cambridge University Collection of Air Photographs: copyright reserved)

Cardean (Angus), looking S, 3 August 1972. The Flavian fort lies on the right, its W angle overlapping a straight field-boundary as indicated by crop-marks of its ditch-system. A further ditch running away from this angle down to the Dean Water defines the E side of a defended annexe. On the left the line of an outwork ditch, interrupted for a single entrance, is also shown by crop-marks (p. 55).

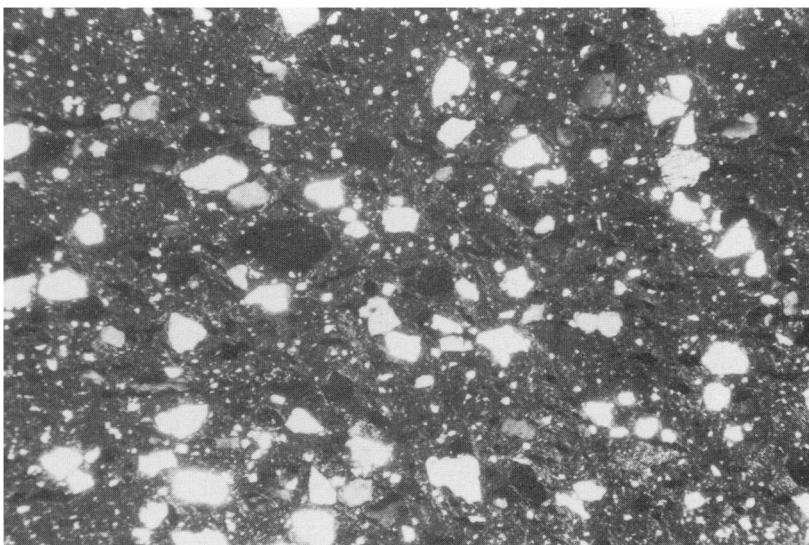
PLATE V



A

XP _____ 500 μ

B



A. Photo-micrograph of greyware with 'lustrous bands' from New Fresh Wharf (p. 134).

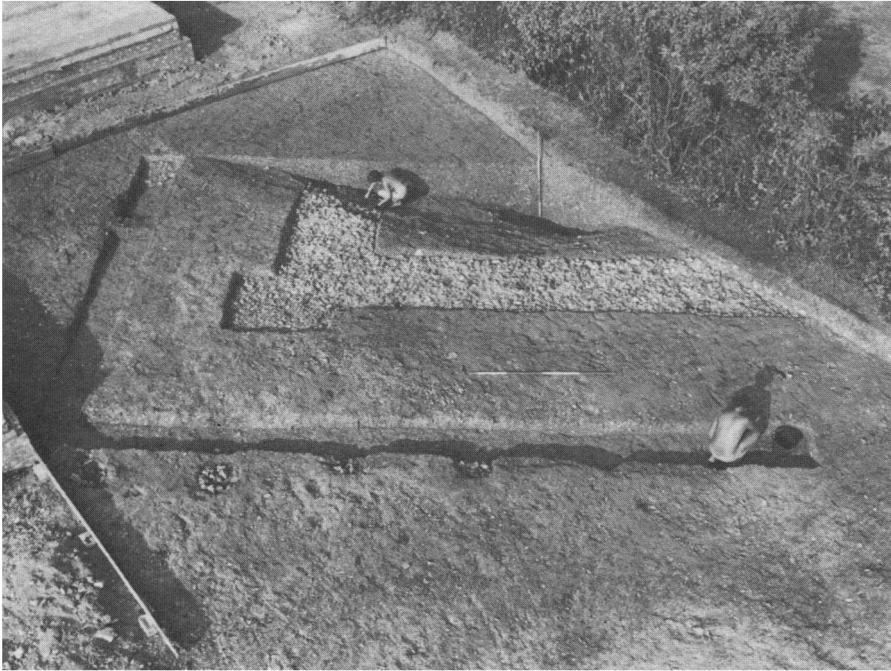
B. Photo-micrograph of Pentice beaker from New Fresh Wharf (p. 134).

PLATE VI



Clipped siliquae (p. 163).

PLATE VII



(Photo: D. S. Neal)

A. Building 1 looking north-east (p. 195).



(Photo: D. S. Neal)

B. General view of Building 6. View north-west (p. 201).

PLATE VIII



(Photo: D. S. Neal)

A. Detail showing Post-hole 188 cutting the northern buttress of Building 6 (p. 202).



(Photo: T. Holmes)

B. Detail of square clay-built 'fire-box' constructed against the furnace mouth. View north-east (p. 202).

PLATE IX



(Photo: D. S. Neal)

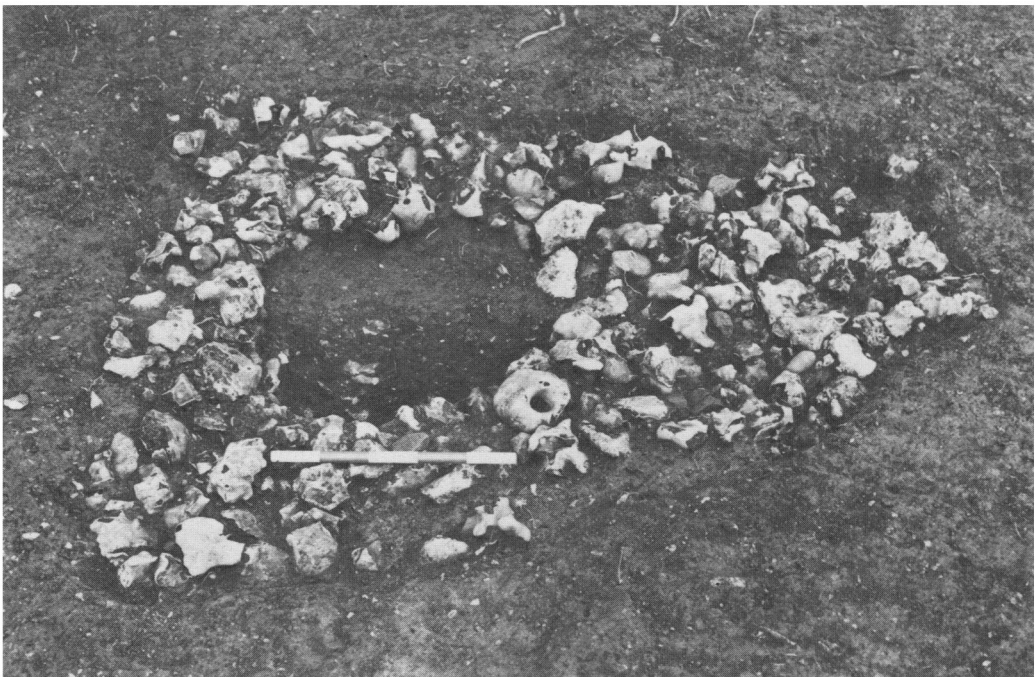
Overall view of bath-house looking south (p. 202).

PLATE X



(Photo: T. Holmes)

A. Tile-capped drain beneath the plunge-bath on the east side of the *tepidarium* (243). View north (p. 203).



(Photo: D. S. Neal)

B. Post-hole 271 showing post-pipe and flint packing. View north (p. 205).

PLATE XI



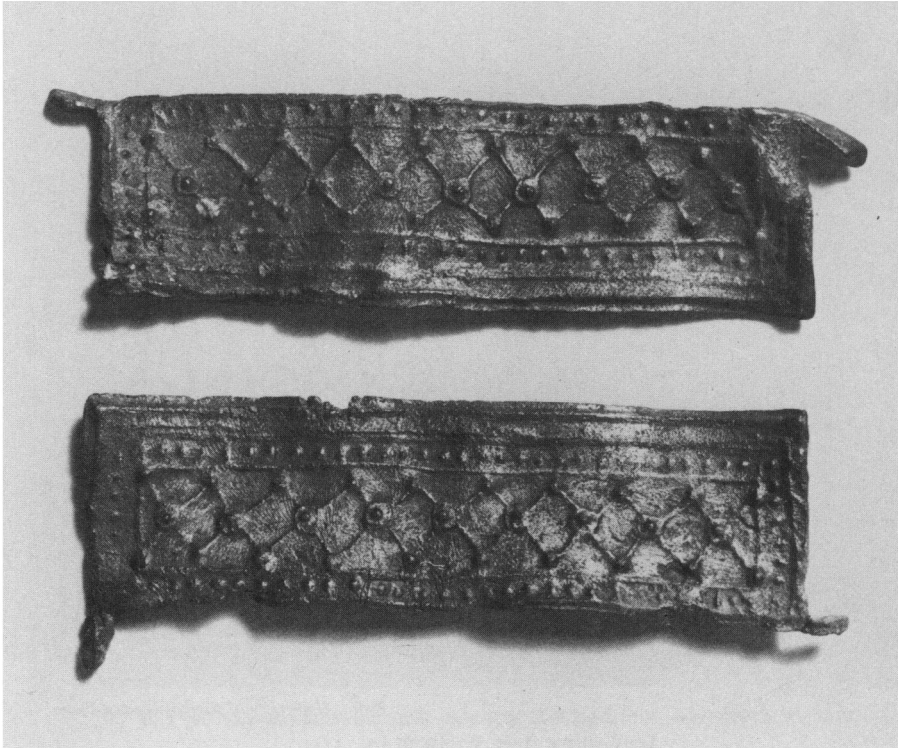
(Photo: University of Newcastle upon Tyne)

Lead shrine from Wallsend (p. 231).

PLATE XII

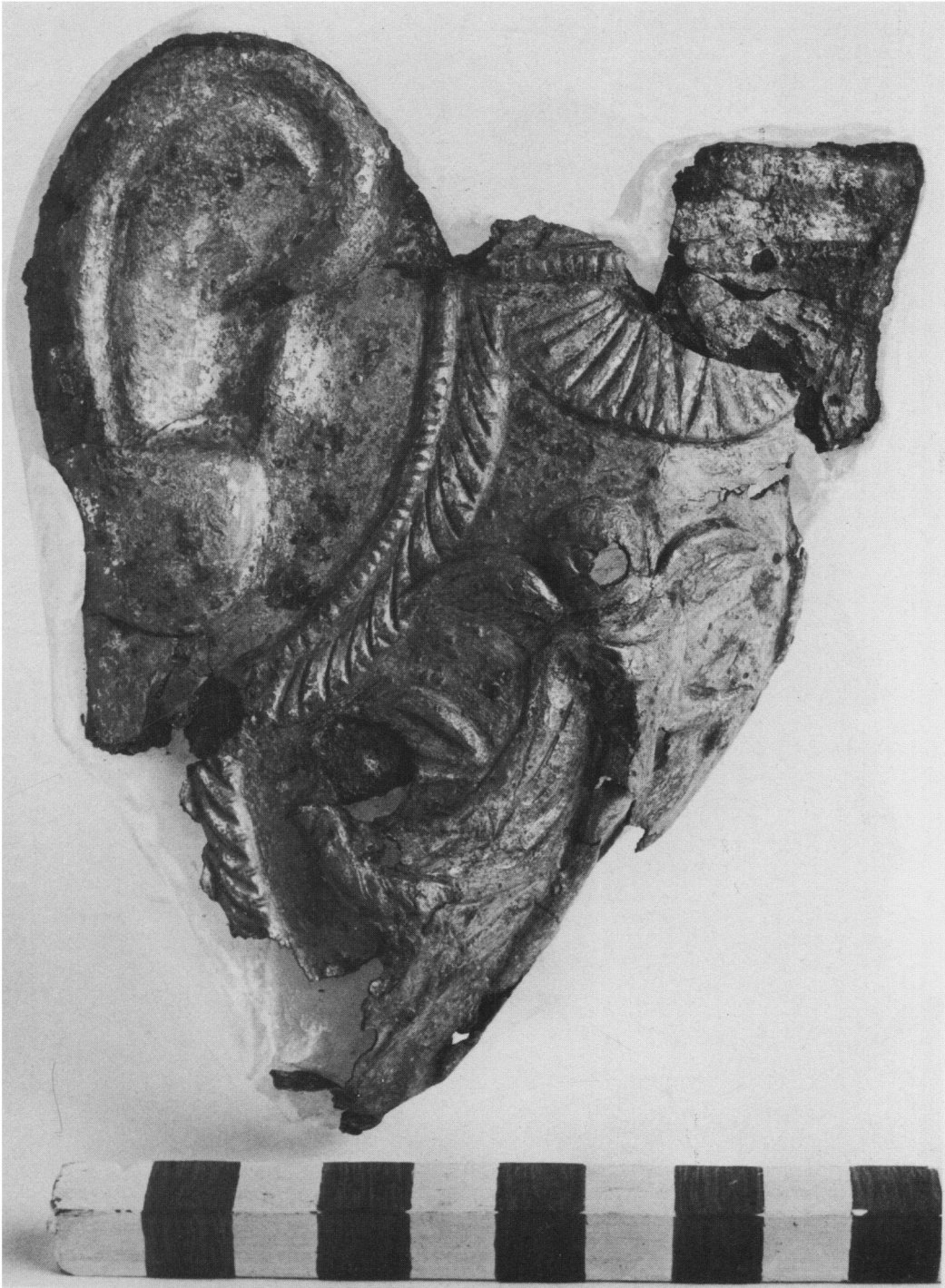


(Photo: University of Newcastle upon Tyne)
B. Outer face of doors from Wallsend lead shrine (p. 231).



(Photo: University of Newcastle upon Tyne)
A. Inner face of doors from Wallsend lead shrine (p. 231).

PLATE XIII



(Photo copyright: Leicestershire Museums, Art Galleries and Record Services)

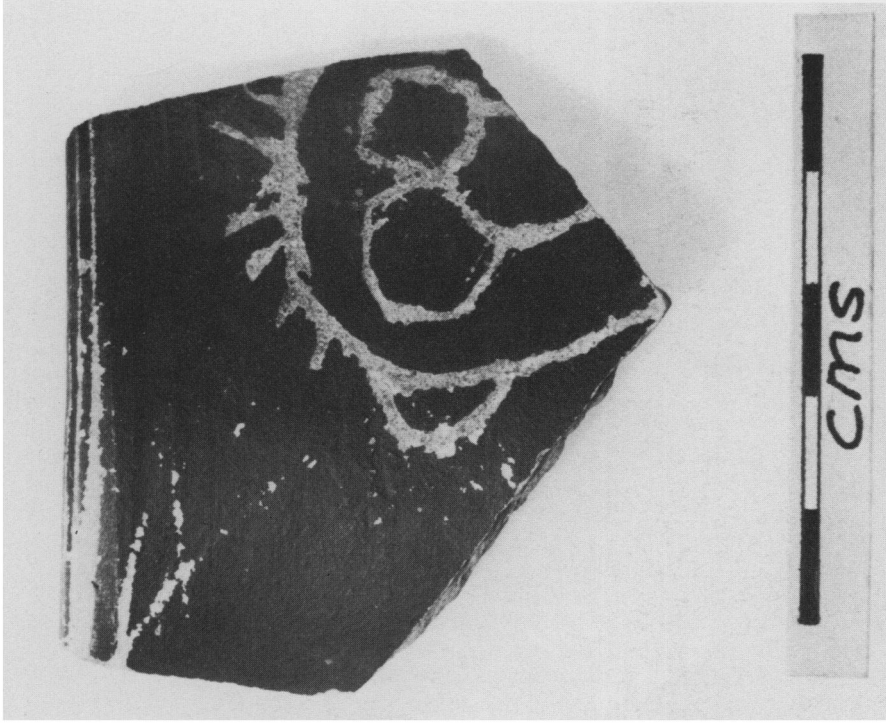
Cheek-piece from a cavalry helmet found in Leicester. Scale in centimetres (p. 236).

PLATE XIV



(Photo copyright: Leicestershire Museums, Art Galleries and Record Services)

Cheek-piece from a cavalry helmet found in Leicester. Scale in centimetres (p. 236).



(Photo: Sidney Renow)

B. A Roman graffito from Essex (p. 238).



(Photo copyright: Leicestershire Museums, Art Galleries and Record Services)

A. Close-up of figure and bird embossed on the cheek-piece from Leicester (p. 236).

PLATE XVI



(Photo: Institute of Archaeology, Oxford)

A. A gold votive plaque (p. 246).



(Photo copyright: Colchester and Essex Museum)

B. FAL/LOLL painted inscription on a Dressel 2/4 amphora from Colchester (p. 250).

PLATE XVII



(Photo: J. G. Crow)

A. Hadrian's Wall, High Shield Crag: Broad foundation, Narrow foundation and later reconstructed Narrow Wall (p. 280).



(Photo: Grosvenor Museum)

B. Chester, Shipgate Street: junction of sewers looking south towards river Dee (p. 286).

PLATE XVIII

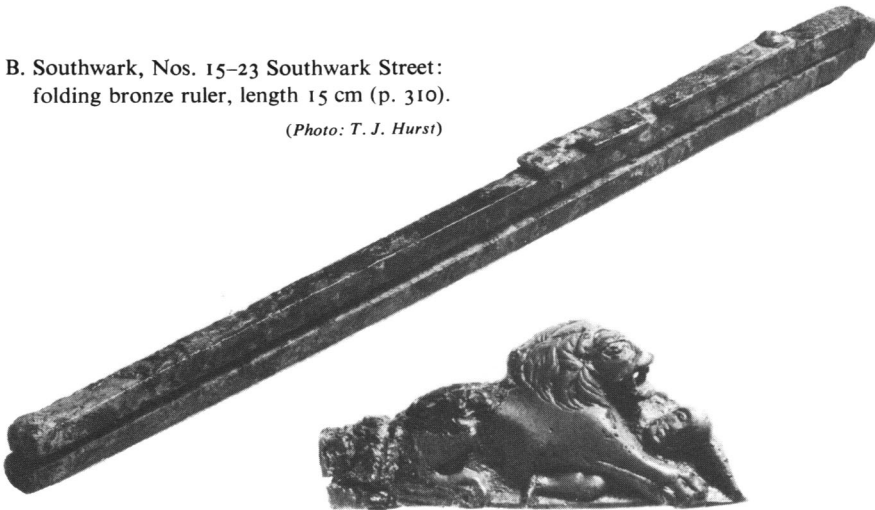


(Photo: copyright, Leicestershire Museums)

A. Narborough, Leics.: heated structure or drying-floor (p. 290).

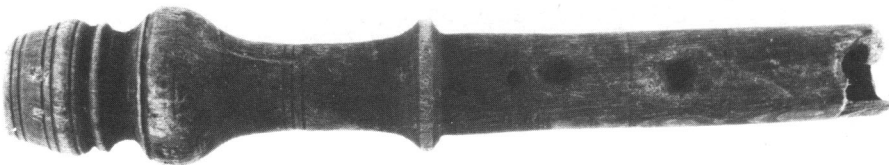
B. Southwark, Nos. 15–23 Southwark Street:
folding bronze ruler, length 15 cm (p. 310).

(Photo: T. J. Hurst)



(Photo: R. Wilkins)

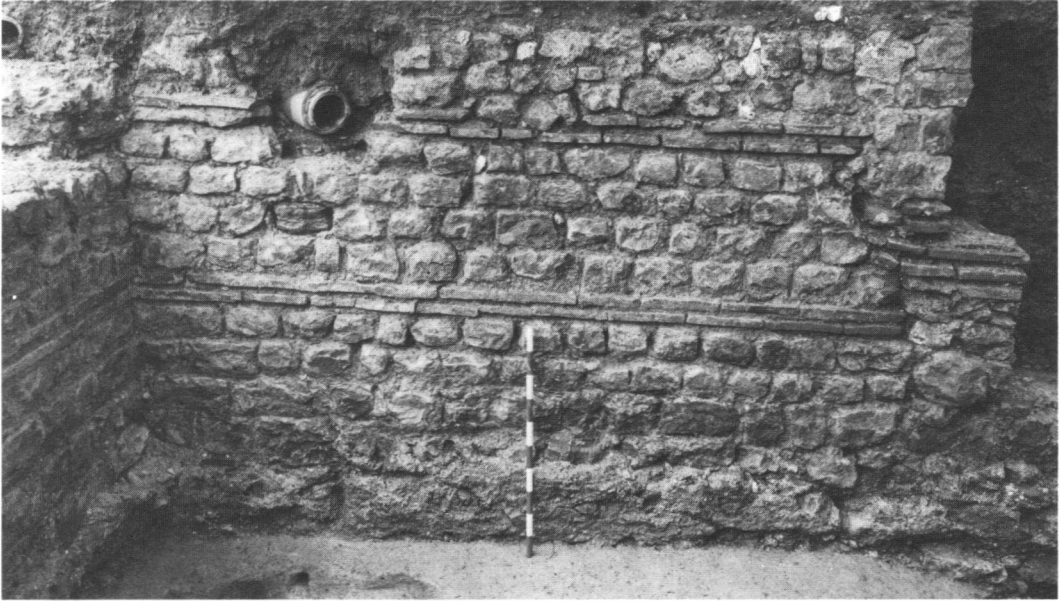
C. Brampton: bronze key-handle (p. 305). Scale 2 : 3.



(Photo: Crown Copyright, by permission of H.M. Stationery Office)

D. Ashton: wooden reed-pipe (*tibia*) before conservation. (Scale 1 : 1). (p. 300).

PLATE XIX



(Photo: J. Bailey, copyright Museum of London)

A. London, 25-6 Lime Street: south wall of second-century or later cellar, showing doorway (right), later remodelled (p. 309).



(Photo: J. Bailey, copyright Museum of London)

B. London, 25-6 Lime Street: external wall-face of second-century or later building showing damp-course of vertically-set *tegulae* (p. 309).

PLATE XX



(Photo: Brian Yule, copyright Museum of London)

A. Winchester Palace (Stave and Rosings), Southwark, London: three hypocaust rooms of a 2nd/3rd-century riverfront building (p. 310). A large slab of collapsed wall painting (PL. xxiii) was recovered from the pillared hypocaust room, centre left.



(Photo: David Beard, copyright Museum of London)

B. Southwark, 15–23 Southwark Street: first- or early second-century hypocaust in a clay-and-timber building (p. 310).

PLATE XXI



(Photo: J. Bailey, copyright Museum of London)

B. Detail of the dipinto on amphora seen in PL. XXI A (p. 310).



(Photo: J. Bailey, copyright Museum of London)

A. Southwark, Winchester Palace site: Koan-type amphora from a Flavian level containing bones of Spanish mackerel and carrying a dipinto on the neck (p. 310).

PLATE XXII



(Photo: B. Rawes)

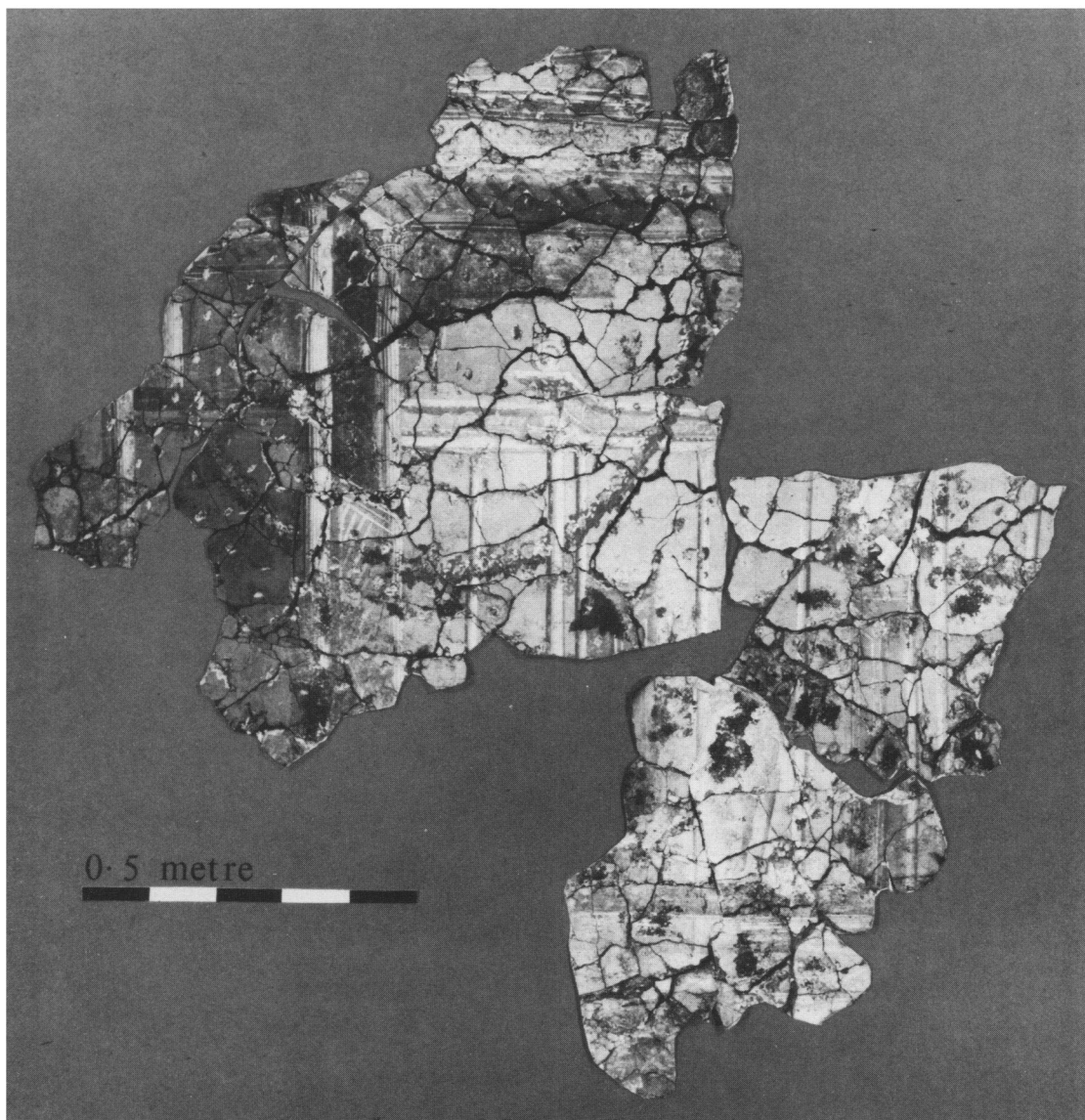
A. Charlton Kings, Vineyard Farm: wall No. 13 with fireplace and coloured plaster *in situ* (p. 312).



(Photo: by courtesy of Bryn Walters)

B. Littlecote Park: circular chalk-floored building with porch, partly overlaid by second-century masonry structure (p. 322).

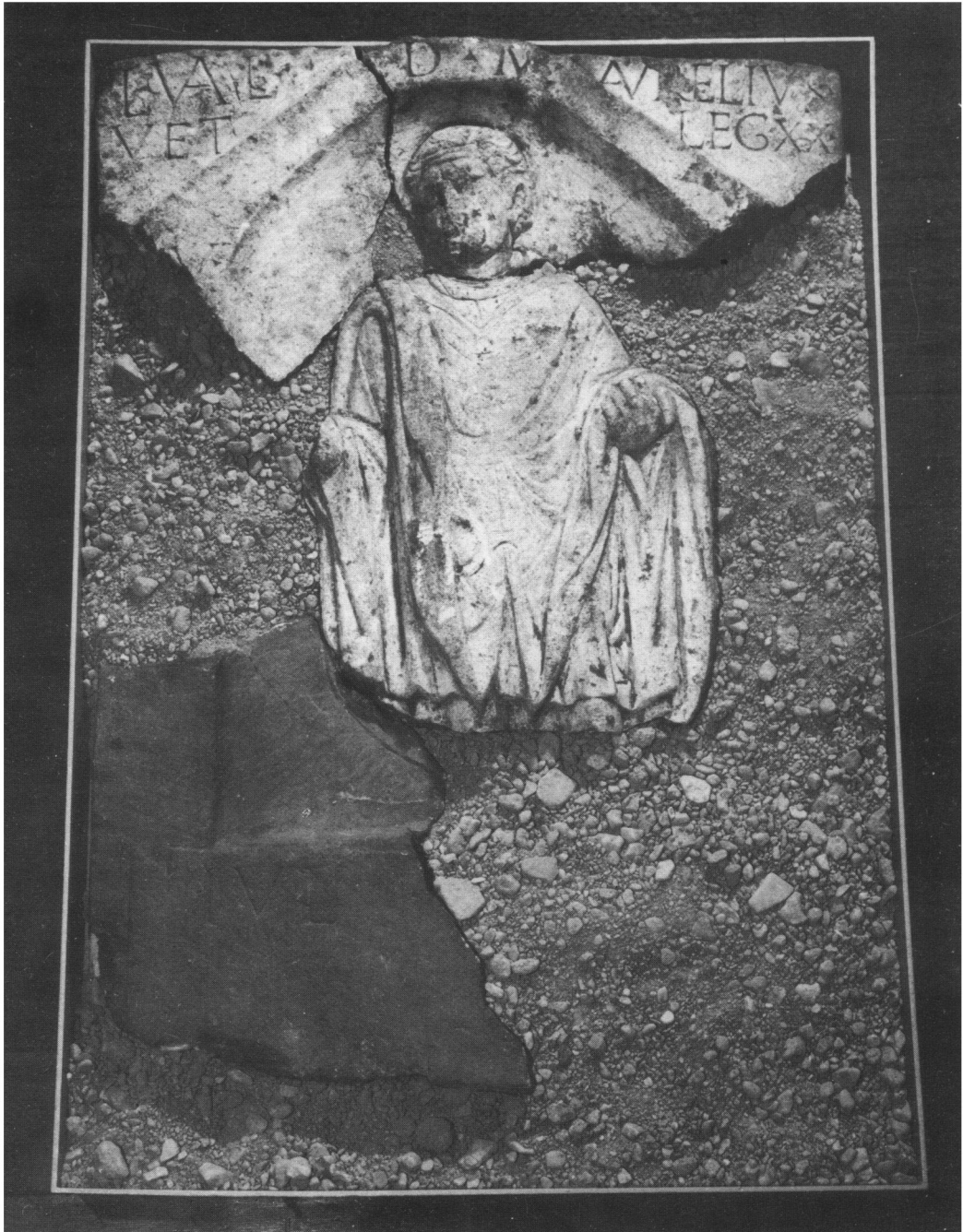
PLATE XXIII



(Photo: S. A. MacKenna)

Winchester Palace (Stave and Rosings), first-phase wall painting (p. 310).

PLATE XXIV



(Photo: City Museum and Art Gallery, Gloucester)

Gloucester: tombstone, width 0·87 m (p. 334, No. 1).

PLATE XXV



(Photo: Institute of Archaeology, London)

Caerleon: building inscription (p. 337, No. 12).

PLATE XXVI



(Photo: Grosvenor Museum, Chester)

A. Chester. Ceramic stamp, width 108 mm (p. 342, No. 17).



(Photo: Grosvenor Museum, Chester)

B. Chester. Ceramic stamp, showing stamps of handles (p. 342, No. 17).

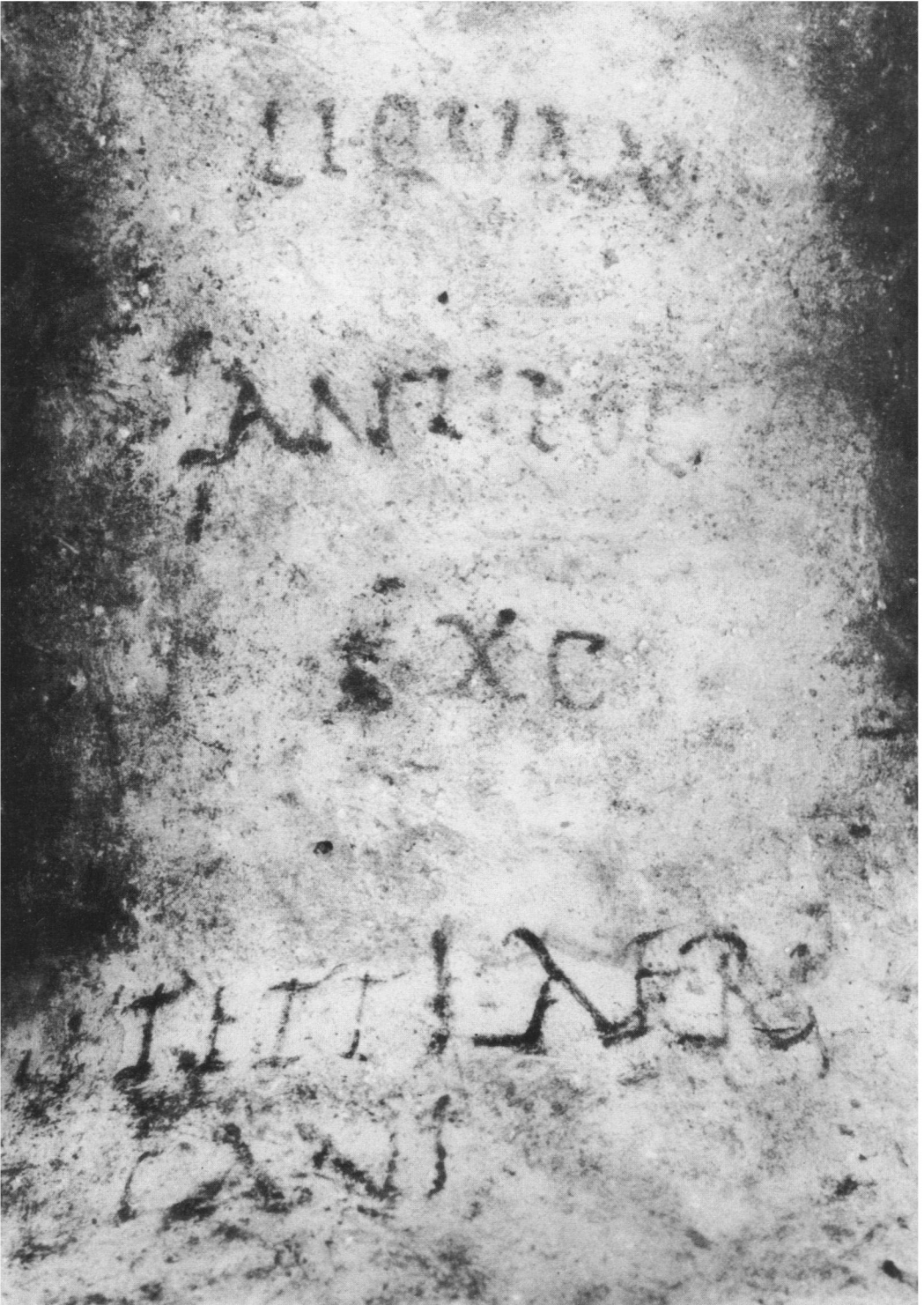
PLATE XXVII



(Photo: Museum of London, copyright reserved)

Southwark: amphora with painted inscription, detail (p. 344, No. 37).

PLATE XXVIII



(Photo: Museum of London, copyright reserved)

Southwark: amphora with painted inscription (p. 344, No. 37).

