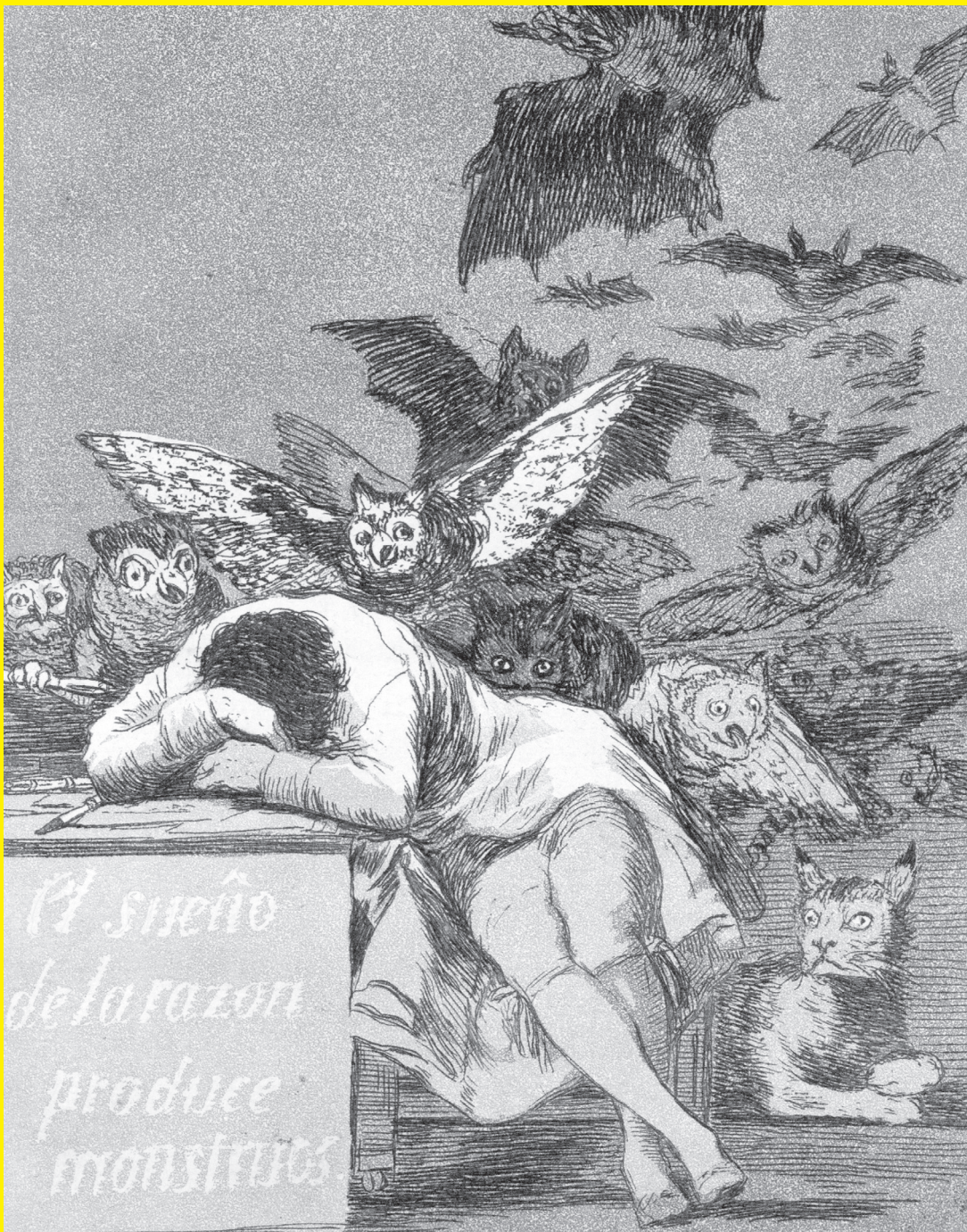


# BJPpsych

The British Journal of Psychiatry



**Coronavirus disease: challenges for psychiatry**

Kelly

**Effects of parental mental illness on children's physical health: systematic review and meta-analysis**

Pierce et al

**Incident psychiatric comorbidity following stress disorder diagnoses in Danish school-aged children: prospective population-based study**

Basu et al

**Mental health difficulties across childhood and mental health service use: findings from a longitudinal population-based study**

Mulraney et al

# BJPsych

The British Journal of Psychiatry

ISSN 0007 - 1250

**Editor** Kamaldeep Bhui CBE

**Deputy Editors**

Matthew Broome  
William Lee  
Gin Malhi  
(Editorials Editor)  
Giles Newton-Howes  
(Reviews Editor)  
Rachel Upthegrove

**Associate Editors**

Shehzad Ali  
Mike Crawford  
Elena Garralda  
Joseph Hayes  
Edgar Jones  
Helen Killaspy  
Anne Lingford-Hughes  
Philip McGuire  
Francis Anthony O'Neill  
Jan Scott  
James Shearer  
Najma Siddiqi  
Mustafa Soomro

**Editorial Advisors**

Sarah Byford  
John Geddes  
Martin Knapp

**International**

**Editorial Board**

Régi T. Alexander (UK)  
Ricardo Araya (UK)  
Allan Beveridge (UK)  
(Book Reviews Editor)  
Jonathan Bisson (UK)  
Alec Buchanan (USA)

Colin Campbell (UK)  
(Correspondence Editor)  
(Debate Editor)  
Mary Cannon (Ireland)  
Patricia Casey (Ireland)  
Andrew Cheng (Taiwan)  
Pamela Collins (USA)  
John Cookson (UK)  
Pim Cuijpers (The Netherlands)  
David Curtis (UK)  
Kimberlie Dean (Australia)  
Colin Drummond (UK)  
Simon Gilbody (UK)  
Peter Haddad (UK)  
Madelyn Hicks (USA)  
Philipp Homan (Switzerland)  
Louise Howard (UK)  
Khalida Ismail (UK)  
Navneet Kapur (UK)  
Kenneth Kaufman (USA)  
Steve Kisely (Australia)  
Stephen Lawrie (UK)  
Glyn Lewis (UK)  
Sean Lynch (UK)  
Kwame McKenzie (Canada)  
Marco Mula (UK)  
Roger Mulder (New Zealand)  
Aileen O'Brien (UK)  
(Debate Editor)  
Martin Orrell (UK)  
Femi Oyeboode (UK)  
(Book Reviews Editor)  
(Executive Contents Editor)  
Michael Phillips (China)  
Alexandra Pitman (UK)  
Zena Samaan (Canada)  
Thomas Schulze (Germany)

Bart Sheehan (UK)  
Sukhwinder Shergill (UK)  
Emily Simonoff (UK)  
Swaran Singh (UK)  
Athula Sumathipala (UK)  
Nori Takei (Japan)  
Derek Tracy (UK)  
Richard Williams (UK)  
Kiriakos Xenitidis (UK)  
(Correspondence Editor)  
Allan Young (UK)

**Trainee Editors**

Katherine Adlington  
Angharad de Cates  
Judith Harrison

**Statistical Advisors**

Eva Petkova  
Pak Sham  
Min Yang

**Staff**

*Head of Publishing*  
Elizabeth Hay  
*Managing Editor*  
Alice Shuttleworth  
*Senior Publications Coordinator*  
Diandra Roberts

**Past Editors**

Eliot Slater 1961–72  
Edward H. Hare 1973–77  
John L. Crammer 1978–83  
Hugh L. Freeman 1984–93  
Greg Wilkinson 1994–2003  
Peter Tyrer 2003–13

**Subscriptions**

*British Journal of Psychiatry* (ISSN 0007-1250) is published monthly. The six issues starting January 2020 comprise Volume 216, the six issues starting July 2020 comprise Volume 217. Orders from non-members of the College, which must be accompanied by payment, may be sent to any bookseller or subscription agent or direct to the publishers: Cambridge University Press, Journals Fulfillment Department, UPH, Shaftesbury Road, Cambridge CB2 8BS, UK, email journals@cambridge.org; or in the USA, Canada and Mexico, to Cambridge University Press, Journals Fulfillment Department, 1 Liberty Plaza, Floor 20, New York, NY 10006, USA, email subscriptions\_newyork@cambridge.org. Japanese prices for institutions are available from Kinokuniya Company Ltd, P.O. Box 55, Chitose, Tokyo 156, Japan.

The annual subscription prices (including delivery by air but excluding VAT) for Volumes 216/217 are as follows:

	INSTITUTIONS	INDIVIDUALS
Print and online	£567/\$1011	£457/\$712
Online only	£465/\$713	£296/\$463

Single issues are £54 (US\$97 in the USA, Canada and Mexico) plus postage. EU subscribers (outside the UK) who are not registered for VAT should add VAT at their country's rate. VAT registered subscribers should provide their VAT registration number. Claims for missing issues should be made immediately on receipt of the subsequent issue.

Queries from College members about missing or faulty copies should be sent to Customer Services, Cambridge University Press, email journals\_societies@cambridge.org, tel. +44 (0)1223 326070.

**USPS ID Statement**

The *British Journal of Psychiatry*, ISSN 0007-1250, is published monthly by Cambridge University Press, UPH, Shaftesbury Road, Cambridge CB2 8BS, UK. The US annual subscription price is \$976 print and online/\$688 online only for institutions and \$687 print and online/\$447 online only for individuals. Airfreight and mailing in the USA by agent named WN Shipping USA, 156-15, 146th Avenue, 2nd Floor, Jamaica, NY 11434, USA. Periodicals postage paid at Brooklyn, NY 11256. US Postmaster: Send address changes to The *British Journal of Psychiatry*, WN Shipping USA, 156-15, 146th Avenue, 2nd Floor, Jamaica, NY 11434, USA. Subscription records are maintained at Cambridge University Press, UPH, Shaftesbury Road, Cambridge CB2 8BS, UK. Air Business Ltd is acting as our mailing agent.

**Online access**

*British Journal of Psychiatry* is hosted on the Cambridge Core service at <https://www.cambridge.org/core/journals/the-british-journal-of-psychiatry>.

Information about the College's publications is available at <https://www.rcpsych.ac.uk>.

**Instructions to authors**

Full instructions to authors are given at <https://www.cambridge.org/core/journals/the-british-journal-of-psychiatry/information/instructions-contributors>.

**Advertising**

Correspondence and copy should be addressed to: Stephen H. P. Mell, Advertising Manager, PTM Publishers Ltd, 41 Hart Close, Uckfield, East Sussex TN22 2DA, UK (email [advertising@ptmpublishers.com](mailto:advertising@ptmpublishers.com); tel. 020 8642 0162)

Founded by J. C. Bucknill in 1853 as the *Asylum Journal* and known as the *Journal of Mental Science* from 1858 to 1963.

©The Royal College of Psychiatrists 2020. Unless so stated, material in the *British Journal of Psychiatry* does not necessarily reflect the views of the Editor or the Royal College of Psychiatrists. The publishers are not responsible for any error of omission or fact.

Printed in Great Britain by Henry Ling Limited, The Dorset Press, 23 High East Street, Dorchester, Dorset DT1 1HD.

This journal issue has been printed on FSC™-certified paper and cover board. FSC is an independent, non-governmental, not-for-profit organization established to promote the responsible management of the world's forests. Please see [www.fsc.org](http://www.fsc.org) for information.



The *British Journal of Psychiatry* is published monthly by the Royal College of Psychiatrists (a charity registered in England and Wales (228636) and in Scotland (SC038369)). The Journal publishes original work in all fields of psychiatry. Manuscripts for publication should be submitted online at <https://mc.manuscriptcentral.com/bjpsych>.

All papers in this journal are peer-reviewed. No person is permitted to take any role in the peer-review of a paper in which they have an interest, defined as follows: fees or grants from, employment by, consultancy for, shared ownership in, or any close relationship with, an organisation whose interests, financial or otherwise, may be affected by the publication of the paper.

- A25 Editorial Board  
A27 Highlights of this issue

## Editorials

- 351 **Treatment concerns for psychiatric symptoms in patients with COVID-19 with or without psychiatric disorders**  
Kai Zhang, Xiaoqin Zhou, Huanzhong Liu and Kenji Hashimoto
- 352 **Coronavirus disease: challenges for psychiatry**  
Brendan D. Kelly

## Review

- 354 **Effects of parental mental illness on children's physical health: systematic review and meta-analysis**  
Matthias Pierce, Holly F. Hope, Adekeye Kolade, Judith Gellatly, Cemre Su Osam, Reena Perchard, Kyriaki Kosidou, Christina Dalman, Vera Morgan, Patricia Di Prinzio and Kathryn M. Abel

## Papers

- 364 **Mental health difficulties across childhood and mental health service use: findings from a longitudinal population-based study**  
Melissa Mulraney, Harriet Hiscock, Emma Sciberras, David Coghill and Michael Sawyer

- 369 **psychiatry in history – Jacob L. Moreno and psychodrama**  
Michele Augusto Riva, Luca Grassi and Michael Belingheri

- 370 **Late-adolescent risk factors for suicide and self-harm in middle-aged men: explorative prospective population-based study**  
Jenny Nyberg, Sara Gustavsson, Maria A. I. Åberg, H. Georg Kuhn and Margda Waern

- 377 **Incident psychiatric comorbidity following stress disorder diagnoses in Danish school-aged children: prospective population-based study**  
Archana Basu, Dóra Körmendiné Farkas, Tammy Jiang, Karestan C. Koenen, Timothy L. Lash, Henrik Toft Sørensen and Jaimie L. Gradus

- 383 **Role of self-focussed reappraisal of negative emotion in emergence of emotional symptoms in adolescent girls**  
Gin S. Malhi, Pritha Das, Tim Outhred, Richard A. Bryant and Vince Calhoun

- 389 **poems by doctors – Postpartum Loneliness**  
Lois Holliday

- 390 **Adolescent residential mobility, genetic liability and risk of schizophrenia, bipolar disorder and major depression**  
Diana Paksarian, Betina B. Trabjerg, Kathleen R. Merikangas, Ole Mors, Anders D. Børjglum, David M. Hougaard, Merete Nordentoft, Thomas Werge, Carsten B. Pedersen, Preben B. Mortensen, Esben Agerbo and Henriette Thisted Horsdal

## Commentary

- 397 **Adverse childhood experiences research: commonalities with similar, arguably identical, literatures and the need for integration**  
Andy P. Siddaway

## Columns

- 399 Correspondence  
400 Book reviews  
401 Contents of the *American Journal of Psychiatry*  
401 Contents of *BJPsych Advances*  
402 Kaleidoscope

## Cover picture

Plate 43 from 'Los Caprichos': The sleep of reason produces monsters (1799) by Francisco Goya (1746–1828).

This image is in the public domain via the Metropolitan Museum of Art.



In 1792, the great Spanish painter Goya became stricken with a severe mental and physical illness, which resulted in near deafness. The nature of his condition remains a mystery, but Ménière's disease has been suggested as a possibility. Subsequently, he became withdrawn, introspective and his outlook grew bleaker. Goya spent five years recuperating, during which time he read the work of the French revolutionary philosophers. From Rousseau, he developed the idea that imagination divorced from reason produces monsters; but that in partnership with reason 'it is the mother of the arts and the source of its wonders'. In Spain he witnessed a country that seemed to have abandoned reason, and in Los Caprichos with its cast of monsters, grotesques, devils and witches, he portrayed the resulting mayhem. Los Caprichos consists of a series of 80 acquainted etchings, which he published in 1799. Goya had originally intended that 'The sleep of reason' would be the opening Plate, but changed its position to Plate 43 as he was worried about a backlash from the political and clerical authorities. The etching shows a sleeping man, usually taken as Goya, plagued by disturbing and unsettling visions.

Thank you to Allan Beveridge for providing the text.

We are always looking for interesting and visually appealing images for the cover of the Journal and would welcome suggestions or pictures, which should be sent to Dr Allan Beveridge, British Journal of Psychiatry, 21 Prescot Street, London, E1 8BB, UK or [bjp@rcpsych.ac.uk](mailto:bjp@rcpsych.ac.uk).