

Impact of a multifaceted antimicrobial stewardship program: A front-line ownership driven quality improvement project in a large urban emergency department

Adam Jonathan Kaufman, MD*[‡]; Janine McCready, MD^{†‡}; Jeff Powis, MD^{†‡}

ABSTRACT

Background: Antibiotic overuse has promoted growing rates of antimicrobial resistance and secondary antibiotic-associated infections such as *Clostridium difficile* (*C. difficile*). Antimicrobial stewardship programs (ASPs) are effective in reducing antimicrobial use in the inpatient setting; however, the unique environment of the emergency department (ED) lends itself to challenges for successful implementation. Front-line ownership (FLO) methodology has been shown to be a potentially effective strategy for the implementation of inpatient ASPs through an iterative multi-pronged approach driven by front-line providers.

Objective: To determine whether a FLO approach to antimicrobial stewardship in the ED can alter antimicrobial usage.

Methods: Interventions were driven by ED physicians and facilitated by Infectious Diseases Division physicians from the hospital's ASP using FLO principles. Measured end points included antibiotic usage in the ED as measured by defined daily doses, and rates of urine culture sent from the ED.

Results: There was a step-wise significant reduction in the use of azithromycin ($p=0.006$), ceftriaxone ($p=0.045$), ciprofloxacin ($p=0.034$), and moxifloxacin ($p=0.008$). There was also a significant reduction in rates of urine cultures ($p<0.001$) by 2.26 urine cultures per 100 ED patient visits.

Conclusions: FLO offers a promising approach to successful implementation of an ASP in the ED. Future studies would be important to evaluate the generalizability of the FLO approach to ASP development in other EDs and to determine strategies to improve the sustainability of reductions in antimicrobial use.

RÉSUMÉ

Contexte: L'usage abusif des antibiotiques a favorisé l'augmentation des taux de résistance aux antimicrobiens et d'infection secondaire associée à l'utilisation des

antibiotiques, par exemple les infections à *Clostridium difficile*. Les programmes de gestion des antimicrobiens (PGA) se montrent efficaces dans la réduction de l'utilisation de ces produits en milieu hospitalier, mais l'environnement très particulier des services des urgences (SU) se prête moins bien à une mise en œuvre réussie. La méthode Front Line Ownership (FLO) pourrait se révéler une stratégie efficace dans la mise en œuvre de PGA en milieu hospitalier grâce à une méthode itérative et à multiples facettes, menée par des fournisseurs de soins de première ligne.

Objectif: L'étude visait à déterminer si l'application de la méthode FLO dans le programme de gestion des antimicrobiens pourrait modifier l'utilisation de ces produits au SU.

Méthode: Les interventions ont été menées par les médecins d'urgence, avec l'aide d'infectiologues qui participaient au PGA de l'hôpital et qui appliquaient les principes de la méthode FLO. Les critères d'évaluation comprenaient l'utilisation des antibiotiques au SU telle qu'établie par les doses thérapeutiques quotidiennes et les taux de culture d'urine envoyée depuis le SU.

Résultats: Une réduction graduelle et significative de l'utilisation des antibiotiques a été observée en ce qui concerne l'azithromycine ($p=0,006$), la ceftriaxone ($p=0,045$), la ciprofloxacin ($p=0,034$) et la moxifloxacin ($p=0,008$). Les chercheurs ont aussi enregistré une réduction significative de 2,26 ($p<0,001$) du taux de culture d'urine pour 100 consultations au SU.

Conclusions: La méthode FLO offre des perspectives intéressantes quant à la mise en œuvre fructueuse d'un PGA au SU. Toutefois, il serait important de mener d'autres études afin d'évaluer la possibilité de généraliser l'application de cette méthode dans l'élaboration de PGA dans d'autres SU, et d'établir des stratégies visant à améliorer le maintien de la réduction de l'utilisation des antimicrobiens.

Keywords: antimicrobial stewardship, emergency department, front-line ownership

From the *Department of Emergency Medicine and †Infectious Diseases Division, Department of Internal Medicine, Michael Garron Hospital, Toronto, ON; and ‡Faculty of Medicine, University of Toronto, Toronto, ON.

Correspondence to: Dr. Adam Jonathan Kaufman, Department of Emergency Medicine, Michael Garron Hospital, 825 Coxwell Avenue, Toronto, ON M4C 3E7; Email: adam.kaufman@utoronto.ca

INTRODUCTION

Since the discovery of antimicrobials, the rate at which new effective antimicrobials have become available has slowed significantly,^{1,2} whereas broad prescribing patterns and ease of access have promoted growing rates of antimicrobial resistance and secondary antibiotic-associated infections. This trend has been epitomized by the development of organisms such as methicillin-resistant *Staphylococcus aureus* (MRSA), vancomycin-resistant *Enterococci* (VRE), extended spectrum beta-lactamases (ESBL), carbapenem-resistant *Enterobacteriaceae* (CRE), and *Clostridium difficile* (*C. difficile*).³⁻⁸ As these trends have continued, patient morbidity, mortality, and health care system costs have grown.^{1,4,5,7-10}

Antimicrobial stewardship was introduced to address these problems.⁹ Encouraging appropriate and judicious use of antibiotics reduces resistance rates at the local level^{2,11,12} and also improves patient outcomes.^{5,9} In recent years, multiple studies have been published evaluating the effectiveness of comprehensive antimicrobial stewardship programs (ASPs) in reducing antimicrobial use in the inpatient setting.^{8,11,13-15} Unfortunately, prospective audit and feedback (PAAF), the default strategy used for most effective ASPs, is not feasible to implement in the emergency department (ED) due to high patient turnover and the need to provide emergent, around-the-clock care.

Several studies evaluating different ASP strategies in the ED have been published.^{8,16-20} These include the use of phone callbacks for culture results returned after patient discharge,^{8,18,20} standardized order sets, algorithms, pre-packaged antibiotic kits,^{16,17} and clinician or patient educational interventions.¹⁹ In a call for further research into ED ASPs, May et al. outlined a comprehensive list of 11 different types of strategies that can be implemented in creating an ED ASP.⁷

Unfortunately, the unique environment of the ED presents several challenges to the successful implementation of an ASP. Introducing change into a complex health care environment requires an approach that accounts for health care workers' knowledge, behaviors, and attitudes.²¹ The published literature suggests that barriers in the ED, including pressures related to volume, lack of patient follow-up, perceived pressure from colleagues or patients themselves to over-prescribe, and clinical practice inertia,^{6,7,20} are predominantly related to behaviors and attitudes. The most recently published guidelines on ASP implementation by the Infectious Diseases Society of America (IDSA) and the Society for

Healthcare Epidemiology of America (SHEA) specifically state that, "Qualitative assessments that can examine the impact of factors such as organizational culture [and] prescriber attitudes . . . are important to establish the context in which ASP implementation occurs."²²

Front-line ownership (FLO) is a methodology that has shown promise in addressing these challenges successfully.^{23,24} It invites front-line staff to identify local challenges to program success and suggest locally viable solutions. Most published studies to date focused only on single top-down interventions such as adherence to guidelines or protocols rather than meaningful clinical outcomes such as changes in usage rates of antimicrobials. The FLO model provides the opportunity for "organic" development of a unique program to meet clinical objectives by designing multiple interventions through a bottom-up approach involving iterative communication between users familiar with the idiosyncrasies of the system in which they operate and those facilitating the program.

The focus of our study is to evaluate the change in antimicrobial utilization in the ED after implementation of an ASP using FLO principles and methodology.

METHODS

Study setting

Toronto East General Hospital is a community teaching hospital with a large urban ED servicing approximately 74,000 adult and pediatric patients annually from a diverse range of socioeconomic and cultural backgrounds.

Since April 2010, the hospital has had a successful inpatient ASP using PAAF as its primary intervention.

Prior to ASP initiation, the ED had a process to ensure follow-up on culture results. The ED receives a daily list of all positive culture results ordered by any ED physician. Each day one physician was designated to compare any positive culture results to the corresponding ED patient record. In the event that a patient had received no prescription or a prescription for an antibiotic to which the cultured bacteria was resistant, that physician became responsible for contacting the patient to arrange further care.

Intervention

A collaboration was initiated between the hospital inpatient ASP, administered by two of the hospital's Infectious

Diseases (ID) Division physicians, and the ED to improve and optimize antimicrobial utilization in the ED.

After the initial educational session outlining ASP principles, subsequent interventions were driven by the front-line ED physicians and facilitated by the ASP using FLO principles. The primary goal of this project was to optimize antimicrobial utilization. An additional strategy identified as critical to reaching our primary goals was to reduce unnecessary microbiology tests, specifically urine cultures. This is explained further in the following texts.

A schematic of interventions suggested and introduced by front-line staff over time is shown in Figure 1.

The utilization assessment survey was provided to ED physicians through an online survey tool to determine their baseline antimicrobial utilization patterns and educational priorities (see Supplementary Appendix A). These priorities were the target for subsequent educational sessions, as shown in Figure 1. At the request of the ED physicians, these educational sessions focused on evidence-based treatment guidelines, created and delivered by ID specialists, based on local disease patterns for specific ID syndromes (i.e., skin and soft-tissue infections [SSTIs], urinary tract infections [UTIs]).

ED physicians identified the need for improved communication with an ID physician. Subsequently, the ID physician on-call was made available during regular work hours for consultation from the ED. ED physicians were encouraged to call him or her when uncertain for advice regarding antimicrobial utilization.

The ID specialist on-call was drawn from a team of three physicians. The most common questions they received were related to complex SSTIs.

Due to a prolonged turnaround time from the laboratory in processing urinalyses, prior to the study intervention, nursing staff frequently collected urine samples from patients, sending them for both urinalysis and culture without physician orders, to ensure that results could be made available to the physician as soon as possible. Such culturing of urine even in the absence of any urinary symptoms or medical orders to do so was noted by the ED physicians to be a major driver of phone callbacks and later inappropriate antimicrobial prescribing for asymptomatic bacteriuria. As a result, an inter-professional group worked with front-line nursing staff to target a reduction in unnecessary culturing of urine for asymptomatic patients.

Last, a decision support tool was collaboratively developed with the ASP team to provide ED clinicians with rapid online access from any ED computer terminal to institution-specific antimicrobial suggestions for common ID presentations based on local susceptibility and resistance patterns as assessed by the inpatient ASP's ID physicians (see Supplementary Appendix B). This decision support tool aimed to reduce use of antibiotics for which resistance was already prevalent (e.g., azithromycin monotherapy for community-acquired pneumonia, fluoroquinolones for UTIs), to avoid unnecessarily broad-spectrum antibiotics (e.g., carbapenems), to provide oral options for commonly used IV antibiotics

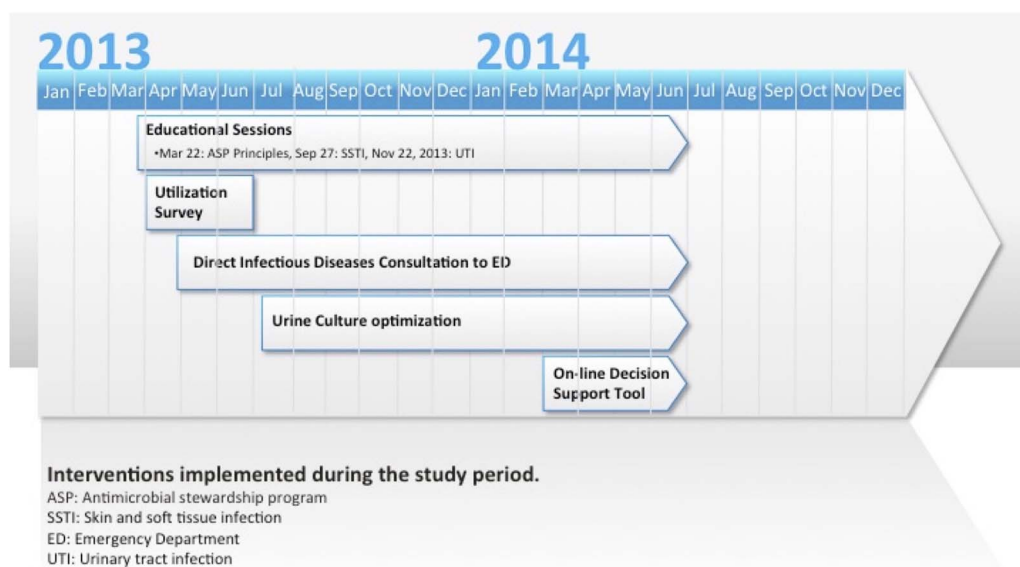


Figure 1. Emergency department antimicrobial stewardship interventions: 2012-2014.

(e.g., ceftriaxone), and to reduce those at high risk of triggering the *C. difficile* infection as a secondary infection (e.g., fluoroquinolones and clindamycin).

Members of the ASP were made available for ongoing discussion throughout the intervention period through emails and intermittent scheduled attendances at monthly ED physicians' rounds. Feedback was also provided to the ED physician leadership quarterly on aggregate ED antimicrobial utilization and urine culture rates as part of a larger ASP quarterly report.

Methods of evaluation

To ensure comparability of the patient population before and after the intervention, ED patient visits and metrics, including Canadian Triage and Acuity Scale (CTAS) scores, average time to discharge, admission rates, and rates of return to the ED within 7 days, were extracted from the electronic medical records (EMRs) from the hospital decision support team after removal of data from patients who left without being seen by the ED physician.

Because the hospital EMR had no means of recording all outpatient discharge prescriptions nor of monitoring total days of therapy (DOT) for emergency room patients after discharge, antimicrobial utilization data were determined through financial charge data from within the ED and converted to defined daily doses (DDDs) using the World Health Organization standardized quotients. This strategy was in keeping with the most recent ASP guidelines from the IDSA and SHEA: "DOTs are preferred, but DDDs remain an alternative for sites that cannot obtain patient-level antibiotic use data."²² DDD data were then standardized by 1,000 ED patient visits. March 2012 to March 2013 was defined as the pre-intervention period and April 2013 to June 2014 as the post-intervention period.

Data on the number of weekly urine cultures sent from the ED were provided by the microbiology lab and standardized by 100 ED patient visits. Data were available from the weeks starting on December 30, 2012 to June 23, 2014.

Analysis

Antimicrobial utilization data were first evaluated for the presence of seasonality using time series modeling. Because none of the best-fit models incorporated seasonality, this was not considered further in the analysis. Subsequently, generalized least squares were

used to model a piecewise linear trajectory for each antimicrobial. Autocorrelation was assessed using Ljung–Box statistics. Because there was no evidence of autocorrelation, the linear piecewise models were used for hypothesis testing. Hypothesis testing consisted of an evaluation for stepwise changes in antimicrobial utilization to demonstrate initial effectiveness of the intervention and evaluation for differences in rates of change in antimicrobial utilization to assess for ongoing maintenance of change.

Weekly urine culture rates were evaluated using generalized least squares linear models incorporating the intervention and week of study. The models were compared using the analysis of variance (ANOVA), and the best-fit model utilizing an interaction between intervention and week of study was used for hypothesis testing.

A significance level of 0.05 was used for all analyses. All analyses were done using R version 3.1.2 (2011, Vienna, Austria) using the "forecast" and "Nlam" packages.

Ethics

As with any clinical intervention, the primary ethical concern was to ensure optimal patient care. All interventions were implemented to guide physician decision-making based on best available evidence without limiting the ability to adapt to individual patient needs or concerns. Ethics approval for this study was obtained through the Research Ethics Board at Toronto East General Hospital. No outside funding was received for this study nor were any conflicts of interest identified by anyone involved in implementing the interventions.

RESULTS

Comparison metrics from before and after the ASP intervention can be seen in Table 1. Responses to the antimicrobial utilization assessment survey can be found in Supplementary Appendix A.

Monthly antimicrobial utilization before and after initiation of the ASP is presented in Figure 2. At the start of the ASP intervention, there was a stepwise significant reduction in the use of azithromycin ($p=0.006$), ceftriaxone ($p=0.045$), ciprofloxacin ($p=0.034$), and moxifloxacin ($p=0.008$). Comparing the slopes of antimicrobial use before and after ASP implementation, there was a decreasing trend in the slope of use of all antimicrobials assessed outside of clindamycin and ertapenem (Table 2). There was a

significant decrease after ASP implementation in the slope in use of ceftazidime (see Table 2) with a significant increase in the slope in use of clindamycin

Metric	Pre-ASP	Post-ASP
Admissions	82,617	84,980
CTAS		
• 1	• 548 (0.7%) ^c	• 425 (0.5%) ^c
• 2	• 17,611 (21.3%) ^c	• 17,394 (20.5%) ^c
• 3	• 47,388 (57.4%) ^c	• 48,801 (57.4%) ^c
• 4	• 16,268 (19.7%) ^c	• 17,566 (20.7%) ^c
• 5	• 625 (0.8%) ^c	• 667 (0.8%) ^c
• 9 ^b	• 177 (0.2%) ^c	• 127 (0.1%) ^c
LOS in ED (hours)	5.2 (5.1-5.5) ^d	5.2 (5.0-5.5) ^d
Percent admitted	11.6%	11.4%
Percent readmitted to ED within 7 days	9.4%	9.7%

CTAS = Canadian Triage and Acuity Scale; LOS = length of stay.
^aExcludes those who left without being seen by a physician.
^bCTAS unknown.
^cTotal and percentage of total.
^dMedian and interquartile range.

(see Table 2 and Figure 2). After the initial significant stepwise reduction in ceftriaxone and azithromycin use after ASP implementation, there was an increasing trend with a return to baseline use.

Weekly rates of urine cultures sent from the ED are presented in Figure 3. On July 15, 2013, after initiation of the intervention focused on reducing rates of urine cultures, there was a relatively abrupt drop in rates after a lag of approximately 3 weeks. The intervention was associated with a stepwise significant reduction in weekly rates of urine cultures ($p < 0.001$) by 2.26 urine cultures per 100 ED patient visits. A statistical analysis did not show any significant difference in the slope of urine culture rates before and after the intervention ($p = 0.155$).

DISCUSSION

Summary

Through an approach based on FLO and sequential implementation of multiple interventions, our ED showed

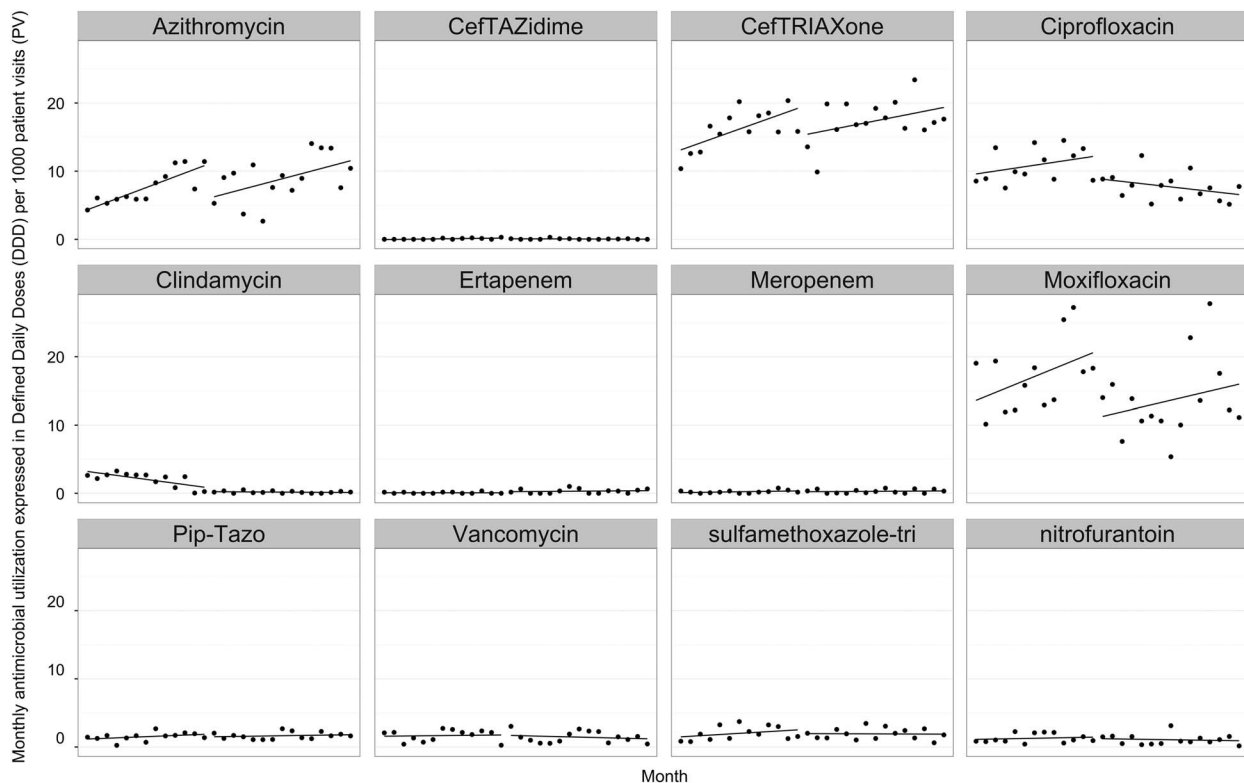


Figure 2. Monthly antimicrobial utilization expressed in defined daily doses (DDD) per 1,000 patient visits (PV) in the emergency department (ED) from March 2012 to June 2014. Note: Scatterplots of raw monthly utilization data are shown for each antibiotic from March 2012 to June 2014 with fitted linear model overlaying. The intervention initiation is shown as a break in the fitted model lines at April 2013. Pip-Tazo = piperacillin/tazobactam; sulfamethoxazole-tri = sulfamethoxazole-trimethoprim.

Table 2. Antimicrobial utilization in the emergency department (ED) before and after introduction of an antimicrobial stewardship program (ASP)

	Change at start of intervention (DDDs per 1,000 ED patient visits)	<i>p</i> -value	Slope pre-intervention	Slope post-intervention	Change in slope	<i>p</i> -value
Azithromycin	-4.573	0.006*	0.539	0.378	-0.161	0.440
Ceftazidime	-0.104	0.072	0.018	-0.004	-0.022	0.005*
Ceftriaxone	-3.804	0.045*	0.509	0.281	-0.228	0.354
Ciprofloxacin	-3.340	0.034*	0.214	-0.161	-0.375	0.077
Clindamycin	-0.661	0.094	-0.192	-0.008	0.184	0.001*
Ertapenem	0.164	0.356	-0.001	0.011	0.012	0.606
Meropenem	-0.119	0.506	0.021	0.008	-0.013	0.594
Moxifloxacin	-9.311	0.014*	0.582	0.336	-0.246	0.617
Pip-Tazo	-0.360	0.365	0.058	0.021	-0.037	0.485
Vancomycin	-0.068	0.911	0.015	-0.035	-0.050	0.542
Sulfamethoxazole-tri	-0.556	0.400	0.085	-0.005	-0.090	0.309
Nitrofurantoin	-0.232	0.656	0.027	-0.021	-0.048	0.481

*Significant at a *p* value of < 0.05.

DDDs = defined daily doses; Pip-Tazo = piperacillin/tazobactam; Sulfamethoxazole-tri = sulfamethoxazole-trimethoprim.

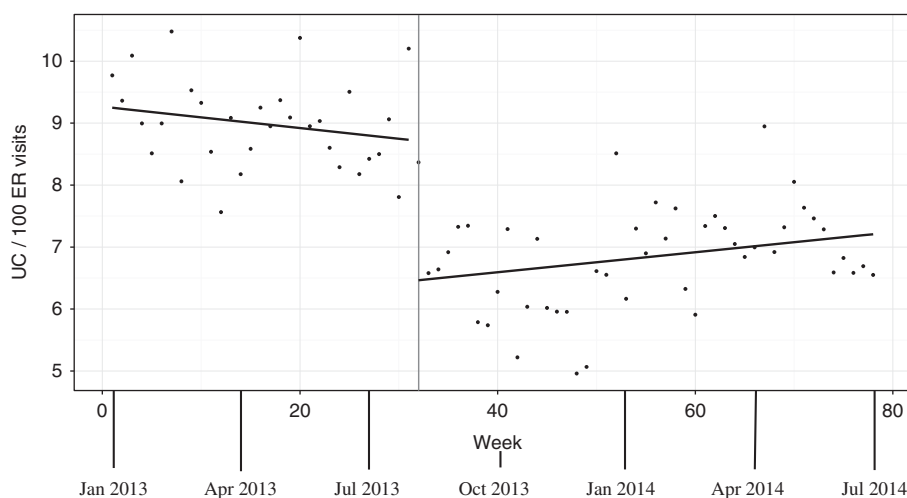


Figure 3. Weekly rates of urine cultures (UC) in the emergency department (ED) per 100 patient visits from December 30, 2012 to June 30, 2014.

Note: Scatterplots of weekly UC rates are shown with fitted linear model overlaying. The intervention initiation is shown as a vertical line at the time of maximal intervention impact (week 32, about 3 weeks after the July 15, 2013 intervention).

a decrease in usage of antibiotics with high resistance rates (e.g., azithromycin, fluoroquinolones) and those at high risk of triggering *C. difficile* as a secondary infection (e.g., fluoroquinolones and clindamycin), and a sustained decrease in rates of urine cultures. Although this was a monocentric study, the use of a FLO approach allowed for the organic development of individualized solutions unique to the local ED environment.

Interpretation

Prior published ASP interventions in the ED have often been externally driven or organized in parallel to the

work of the ED physicians themselves. By using a FLO approach, our study has shown a substantial decrease in unnecessary microbiology investigations and use of antimicrobials that could lead to adverse outcomes (e.g., resistance, ineffective prescribing, or secondary infection). The FLO approach allows for improved engagement of care providers and the development of novel solutions to challenges associated with improved antimicrobial utilization.

The flexibility of the FLO approach also leads to challenges regarding our traditional concept of reproducibility to other EDs. The FLO model emphasizes, “Creating local and context-appropriate solutions. . . . [It] does not

yield solutions that can be copied from one setting where it worked, and then re-applied in the same way in a new setting and expected to work just as well. . . . Although the basic approach is consistent, the way in which it manifests will vary widely.”²³ Although the specific set of interventions used in our study may not work equally well in another ED, our experience with the FLO approach suggests that it may successfully lead other EDs to find their own unique interventions to optimize antimicrobial utilization and related investigations.

As a further point of interest, although the interventions in this study were developed using FLO methodology independently of the recently published IDSA and SHEA ASP guidelines, they are nevertheless entirely consistent with the recommendations made in them.²² FLO can be thought of as an engagement strategy, which may also help with the implementation of unique and also previously validated ASP interventions.

Antimicrobials are overused in the ED.¹ Prior published ASP interventions in the ED have focused on adherence to guidelines for specific infections or culture results rather than changes in antimicrobial utilization. By using a broader view of the ED as a whole, this study shows success through the lens of antimicrobial and culture utilization across our department. In the long term, further research may be helpful to see whether this change in department-wide antibiotic use can correlate to potential changes in the resistance pattern of bacteria in our geographic area.

Although outpatient and discharge prescriptions are not yet included in our data, recent efforts in our ED have been undertaken to maintain an online record of all discharge prescriptions from the ED. The incorporation of these data into future iterations of the ASP will provide an avenue to further improvement in prescribing patterns.

LIMITATIONS

The downside of the FLO multi-pronged approach to an ASP in the ED is that the contributions of each intervention to the overall outcome measures are confounded together. Thus, further studies elsewhere would be needed to isolate the relative effect of each intervention. Additionally, the generalizability of our intervention to other EDs is challenging to predict as a result of the flexibility of the FLO approach and the fact that this was a monocentric study. FLO may lead to a different set of ASP interventions than the ones we used if used in a different ED.

Because antimicrobial utilization data are presented in the form of DDD calculated from financial costs rather than DOT from medication administration records, it is impossible to be absolutely certain that the medication was actually administered to the patient. This limitation, however, is universal with all stewardship studies using DDD data. Additionally, the use of aggregate antimicrobial utilization data for the entire ED means that antimicrobials prescribed by non-ED specialists after referral from an ED physician, but prior to patient transfer from the department, were included in the data and may dilute the impact of our intervention on the ED physicians. Last, aggregate antimicrobial utilization data do not allow us to assess the appropriateness of antimicrobial therapy for individual patients.

Outpatient antimicrobial prescriptions are not captured by these data. Because only initial antimicrobial treatment in the ED prior to transfer or discharge was included, a significant proportion of ED prescribing practices is missed. Although outpatient data are not included, the changes seen in the pattern of antimicrobials used within the ED strongly suggest a cultural change in prescribing patterns within the ED induced by our front-line approach. The reduction in patterns of use for antimicrobials used during a patient's ED stay may very well translate into improved outpatient patterns of use, yet further study would be required to confirm this.

Additionally, although the intervention appears effective across several antibiotics in generating an initial change in rates of use, the continuing upward slopes among several of these, commonly used antibiotics such as azithromycin, ceftriaxone, and moxifloxacin, suggest difficulties in sustaining reductions in antimicrobial use. Although ceftriaxone and azithromycin use returned to baseline levels, moxifloxacin use remained below baseline levels after intervention implementation.

Many of the ASP tools used in our study focused on educational interventions. Education often has its largest impact on quality improvement at the time that it is delivered with subsequent regression to the mean without reinforcement. Prospective audit and feedback, the most important antimicrobial stewardship tool among inpatient programs, is likely effective through its ability to consistently and repetitively educate providers on strategies to optimize antimicrobial use.²⁵ Although PAAF is not a feasible intervention in the ED, tools such as retrospective audit and feedback would be able to deliver

the same repetitive educational opportunities. The impact of adding retrospective audit and feedback on the sustainability of initial decreases in antibiotic use seen with our intervention could be addressed by future studies.

CONCLUSIONS

The experience and results outlined in this article show the basis from which a broad multi-pronged ASP can be successfully implemented in the ED. Unlike previous studies that focused only on a single intervention, our study emphasizes the value of FLO and an iterative approach with multiple interventions. Regular physician engagement was a key component in creating the culture for a sustainable and successful ED ASP. Future studies would be helpful to evaluate the generalizability of this approach to ASP development in other EDs and to determine strategies to improve the sustainability of reductions in antimicrobial use.

Acknowledgements: The authors wish to thank the Emergency Department staff for their ongoing commitment to the project: Barley Chironda for his work in developing strategies to optimize urine cultures; Toronto East General Hospital Decision Support, especially Angela Chow, for their assistance with data requests; and John Matelski for his patience with the statistical analysis.

Financial support: This research received no specific grant from any funding agency, commercial, or not-for-profit sectors.

Competing interests: None declared.

SUPPLEMENTARY MATERIAL

To view supplementary material for this article, please visit <https://doi.org/10.1017/cem.2017.11>.

REFERENCES

- Karras D. Antibiotic misuse in the emergency department. *Acad Emerg Med* 2006;13:331-3.
- Fishman N. Antimicrobial stewardship. *Am J Med* 2006; 119(6 Suppl 1):S53-61.
- Cohen ML. Epidemiology of drug resistance: implications for a post-antimicrobial era. *Science* 1992;257(5073):1050-5.
- Han JH, Kasahara K, Edelstein PH, et al. Risk factors for infection or colonization with CTX-M extended-spectrum- β -lactamase-positive *Escherichia coli*. *Antimicrob Agents Chemother* 2012;56(11):5575-80.
- Harrison PF, Lederberg J. (eds.) *Institute of Medicine Workshop Report. Antimicrobial resistance: issues and options*. Toronto: National Academy Press; 1998.
- May L, Gudger G, Armstrong P, et al. Multisite exploration of clinical decision making for antibiotic use by emergency medicine providers using quantitative and qualitative methods. *Infect Control Hosp Epidemiol* 2014;35(9):1114-25.
- May L, Cosgrove S, L'Archeveque M, et al. A call to action for antimicrobial stewardship in the emergency department: approaches and strategies. *Ann Emerg Med* 2013;62:69-77.
- Baker SN, Acquisto NM, Ashley ED, et al. Pharmacist-managed antimicrobial stewardship program for patients discharged from the emergency department. *J Pharm Pract* 2012;25(2):190-4.
- Shlaes DM, Gerding DN, John JF Jr, et al. Society for Healthcare Epidemiology of America and Infectious Diseases Society of America joint committee on the prevention of antimicrobial resistance: guidelines for the prevention of antimicrobial resistance in hospitals. *Clin Infect Dis* 1997;25:584-99.
- Gross R, Morgan AS, Kinky DE, et al. Impact of a hospital-based antimicrobial management program on clinical and economic outcomes. *Clin Infect Dis* 2001;33:289.
- Ohl CA, Dodds Ashley ES. Antimicrobial stewardship programs in community hospitals: the evidence base and case studies. *Clin Infect Dis* 2011;53:S23-8.
- Lipworth AD, Hyle EP, Fishman NO, et al. Limiting the emergence of extended-spectrum Beta-lactamase-producing enterobacteriaceae: influence of patient population characteristics on the response to antimicrobial formulary interventions. *Infect Control Hosp Epidemiol* 2006;27:279-86.
- Lesprit P, de Pontfarcy A, Esposito-Farese M, et al. Post-prescription review improves in-hospital antibiotic use: a multicenter randomized controlled trial. *Clin Microbiol Infect* 2015;21(2):180.e1-7.
- Thuong M, Shortgen F, Zazempa V, et al. Appropriate use of restricted antimicrobial agents in hospitals: the importance of empirical therapy and assisted re-evaluation. *J Antimicrob Chemother* 2000;46:501-8.
- Lesprit P, Landelle C, Brun-Buisson C. Clinical impact of unsolicited post-prescription antibiotic review in surgical and medical wards: a randomized controlled trial. *Clin Microbiol Infect* 2012;19:E91-7.
- Hecker MT, Fox CJ, Son AH, et al. Effect of a stewardship intervention on adherence to uncomplicated cystitis and pyelonephritis guidelines in an emergency department setting. *PLoS One* 2014;9(2):e87899.
- Ostrowsky B, Sharma S, DeFino M, et al. Antimicrobial stewardship and automated pharmacy technology improve antibiotic appropriateness for community-acquired pneumonia. *Infect Control Hosp Epidemiol* 2013;34(6):566-72.
- Randolph TC, Parker A, Meyer L, et al. Effect of a pharmacist-managed culture review process on antimicrobial therapy in an emergency department. *Am J Health Syst Pharm* 2011;68:916-9.
- Metlay JP, Camargo CA Jr, MacKenzie T, et al. Cluster-randomized trial to improve antibiotic use for adults with acute respiratory infections treated in emergency departments. *Ann Emerg Med* 2007;50:221-30.
- Dumkow LE, Kenney RM, MacDonale NC, et al. Impact of a multidisciplinary culture follow-up program of antimicrobial therapy in the emergency department. *Infect Dis Ther* 2014;3:45-53.

21. Cabana MD, Rand CS, Powis NR, et al. Why don't physicians follow clinical practice guidelines? *JAMA* 1999; 282(15):1458-65.
22. Barlam TF, Cosgrove SE, Abbo LM, et al. Implementing an antibiotic stewardship program: guidelines by the Infectious Diseases Society of America and the Society for Healthcare Epidemiology of America. *Clin Infect Dis* 2016;62(10):e51-77.
23. Zimmerman B, Reason P, Rykert L, et al. Front-line ownership: generating a cure mindset for patient safety. *Healthc Pap* 2013;13(1):6-22.
24. Chirona B, Clancy S, Powis JE. Optimizing urine culture collection in the emergency department using frontline ownership interventions. *Clin Infect Dis* 2014; 59(7):1038-9.
25. Fleming D, Ali KF, Matelski J, et al. When antimicrobial stewardship isn't watching: the educational impact of critical care prospective audit and feedback. *Open Forum Infect Dis* 2016;3(3):1-4.