

Original Article

*These authors contributed equally to this work.

Cite this article: Zhao W, Zhu Dao-min, Shen Y, Zhang Y, Chen T, Cai H, Zhu J, Yu Y (2024). The protective effect of vitamin D supplementation as adjunctive therapy to antidepressants on brain structural and functional connectivity of patients with major depressive disorder: a randomized controlled trial. *Psychological Medicine* 1–11. <https://doi.org/10.1017/S0033291724000539>

Received: 31 August 2023

Revised: 9 January 2024

Accepted: 20 February 2024

Keywords:

functional network connectivity; major depressive disorder; randomized controlled trial; vitamin D supplementation; white matter integrity

Corresponding author:

Yongqiang Yu;

Email: cj.yuyongqiang@vip.163.com;

Jiajia Zhu;

Email: zhujiagiagraduate@163.com

The protective effect of vitamin D supplementation as adjunctive therapy to antidepressants on brain structural and functional connectivity of patients with major depressive disorder: a randomized controlled trial

Wenming Zhao^{1,2,3,4,*}, Dao-min Zhu^{5,6,7,*}, Yuhao Shen^{1,2,3,4}, Yu Zhang^{5,6,7}, Tao Chen^{5,6,7}, Huanhuan Cai^{1,2,3,4}, Jiajia Zhu^{1,2,3,4} and Yongqiang Yu^{1,2,3,4}

¹Department of Radiology, The First Affiliated Hospital of Anhui Medical University, Hefei 230022, China; ²Research Center of Clinical Medical Imaging, Anhui Province, Hefei 230032, China; ³Anhui Provincial Institute of Translational Medicine, Hefei 230032, China; ⁴Anhui Provincial Key Laboratory for Brain Bank Construction and Resource Utilization, Hefei 230032, China; ⁵Department of Sleep Disorders, Affiliated Psychological Hospital of Anhui Medical University, Hefei 230022, China; ⁶Hefei Fourth People's Hospital, Hefei 230022, China and ⁷Anhui Mental Health Center, Hefei 230022, China

Abstract

Background. Growing evidence points to the pivotal role of vitamin D in the pathophysiology and treatment of major depressive disorder (MDD). However, there is a paucity of longitudinal research investigating the effects of vitamin D supplementation on the brain of MDD patients.

Methods. We conducted a double-blind randomized controlled trial in 46 MDD patients, who were randomly allocated into either VD (antidepressant medication + vitamin D supplementation) or NVD (antidepressant medication + placebos) groups. Data from diffusion tensor imaging, resting-state functional MRI, serum vitamin D concentration, and clinical symptoms were obtained at baseline and after an average of 7 months of intervention.

Results. Both VD and NVD groups showed significant improvement in depression and anxiety symptoms but with no significant differences between the two groups. However, a greater increase in serum vitamin D concentration was found to be associated with greater improvement in depression and anxiety symptoms in VD group. More importantly, neuroimaging data demonstrated disrupted white matter integrity of right inferior fronto-occipital fasciculus along with decreased functional connectivity between right frontoparietal and medial visual networks after intervention in NVD group, but no changes in VD group.

Conclusions. These findings suggest that vitamin D supplementation as adjunctive therapy to antidepressants may not only contribute to improvement in clinical symptoms but also help preserve brain structural and functional connectivity in MDD patients.

Introduction

Major depressive disorder (MDD) is the leading cause of disability in the world and is associated with personal, family, and social burdens (WHO, 2017). In psychiatry, treatment is prescribed on an empirical basis based on clinical profile. Pharmacological and non-pharmacological treatments are available; however, antidepressants are used more frequently than psychological interventions because of inadequate resources (Cipriani et al., 2018). When considering the risk-benefit profile of antidepressants in the acute treatment of MDD, these drugs do not seem to offer a clear advantage for young populations (Cipriani et al., 2016). Moreover, antidepressants entail side effects and complications, highlighting the importance of alternative therapeutic strategies. Thus, emerging evidence encourages a more integrative approach for MDD and suggests that lifestyle factors such as diet, exercise, and sleep also play a significant mediating role in the development, progression, and treatment of MDD (Jacka et al., 2010; Jacka et al., 2011; Lopresti, Hood, & Drummond, 2013; Opie et al., 2017). Accordingly, lifestyle modification should serve as a routine part of treatment and preventative efforts (Sarris, O'Neil, Coulson, Schweitzer, & Berk, 2014). In this context, there is increasing recognition of the importance of some nutritional components in MDD (Libuda, Antel, Hebebrand, & Focker, 2017). For example, it is evident that vitamin D might influence risk, pathogenesis, persistence, and treatment of MDD (Bersani et al., 2019).



Vitamin D has long been recognized as important for bone health. In recent years, there is also growing interest in its role as a risk factor for mental health. It is quite apparent that vitamin D acts as hormone and fat-soluble vitamin, regulating the expression of more than 900 genes involved in a wide array of physiological functions (Kongsbak, Levring, Geisler, & von Essen, 2013; Pike *et al.*, 2010). In addition, vitamin D is engaged in various neural processes, such as the growth and development of neurons as well as the synthesis, release, and regulation of neurotransmitters (Kesby *et al.*, 2017; Patrick & Ames, 2015). Moreover, metabolites of vitamin D can cross the blood-brain barrier and bind to vitamin D receptors (Ryan, Anderson, & Morris, 2015), which are broadly distributed in the brain (e.g. the prefrontal cortex and limbic system) (Eyles, Smith, Kinobe, Hewison, & McGrath, 2005), providing a mechanistic account for the role of vitamin D in emotion, cognition, and neuropsychiatric disorders (Di Somma *et al.*, 2017; Eyles, Burne, & McGrath, 2013; Schlogl & Holick, 2014). Crucially, a large number of clinical studies have provided strong evidence for an association between low vitamin D and MDD (Aghajafari, Letourneau, Mahinpey, Cosic, & Giesbrecht, 2018; Anglin, Samaan, Walter, & McDonald, 2013; Briggs *et al.*, 2019; Ju, Lee, & Jeong, 2013; Milaneschi *et al.*, 2014; Parker, Brotchie, & Graham, 2017; Wong, Chin, & Ima-Nirwana, 2018), suggesting that hypovitaminosis D may represent an underlying vulnerability for depression. Several possible mechanisms that may be responsible for the link between low vitamin D and MDD have been proposed: (1) elevation in both Ca^{2+} and reactive oxygen species levels in neuronal cells (Berridge, 2015, 2017; Kalueff, Eremin, & Tuohimaa, 2004), (2) epigenetic alterations including the hypermethylation of gene promoters (Berridge, 2017; Guidotti *et al.*, 2011; Saavedra, Molina-Marquez, Saavedra, Zambrano, & Salazar, 2016), (3) abnormal serotonin synthesis (Geng *et al.*, 2019), (4) excessive activation of the immune system (Geng *et al.*, 2019), and (5) dysfunctional inflammatory pathways (Alroy, Towers, & Freedman, 1995; Beurel, Toups, & Nemeroff, 2020; McCann & Ames, 2008; Sun *et al.*, 2006). Moreover, a previous review concludes that vitamin D deficiency is associated with an increased risk of depression and vitamin D supplementation is of benefit for depressed individuals who are vitamin D deficient (Parker *et al.*, 2017). Another recent systematic review and meta-analysis of randomized controlled trial (RCT) suggests that vitamin D supplementation can reduce negative emotions, with patients with MDD and individuals with vitamin D deficiency most likely to benefit from supplementation (Cheng, Huang, & Huang, 2020). However, there are prior RCT indicating no effect of vitamin D supplementation on depression (Gowda, Mutowo, Smith, Wluka, & Renzaho, 2015), or no differences in depression outcomes between vitamin D supplementation and placebo (Okereke *et al.*, 2020; Okereke & Singh, 2016). The heterogeneity in these findings may be due to differences in the samples or the dosage and duration of vitamin D supplementation. Although several attempts have been made to identify the neural substrates underlying the association between low vitamin D and depression (Zhao *et al.*, 2023; Zhao *et al.*, 2022; Zhu *et al.*, 2019; Zhu *et al.*, 2022), there is a paucity of longitudinal research investigating the effects of vitamin D supplementation on the brain of MDD patients.

The notion that specific cognitive and emotional processes arise from functionally distinct brain regions has lately shifted toward a connectivity-based approach that emphasizes the role of network-mediated integration across regions. Likewise, the

clinical neuroscience has shifted from predominantly lesion-based approach to a connectomic paradigm, framing mental disorders including MDD as dysconnectivity syndromes. Magnetic resonance imaging (MRI) has provided a safe, non-invasive, and easily repeated neuroimaging tool to investigate the underlying neuropathology of MDD (Luo, You, DelBello, Gong, & Li, 2022). Structural and functional connections of brain networks can be characterized by white matter integrity measured by diffusion tensor imaging (DTI) (Alexander, Lee, Lazar, & Field, 2007) and functional network connectivity measured by resting-state functional MRI (fMRI) (Fox & Raichle, 2007), respectively. These approaches have been widely applied to examine impairments in white matter integrity (Chen *et al.*, 2017; Chen *et al.*, 2016; Jiang *et al.*, 2017; Yang *et al.*, 2020; Zhang *et al.*, 2020) and functional network connectivity (Albert, Potter, Boyd, Kang, & Taylor, 2019; Chen *et al.*, 2019; Jiao *et al.*, 2020; Liu *et al.*, 2021; Liu *et al.*, 2019; Liu *et al.*, 2020; Sacchet *et al.*, 2016; Wu *et al.*, 2017; Yu *et al.*, 2019; Zhu *et al.*, 2022) in MDD. Remarkably, using a combination of DTI and resting-state fMRI techniques, investigators have found abnormal brain structural and functional connectivity in MDD (de Kwaasteniet *et al.*, 2013; Li *et al.*, 2020; Yin *et al.*, 2016), pointing to the potential utility of a combined analysis of multimodal imaging data in achieving a more complete investigation of disease mechanisms.

In this study, we conducted a double-blind RCT to investigate the effects of vitamin D supplementation on brain structural and functional connectivity in MDD patients using a combination of DTI and resting-state fMRI. We hypothesized that adjuvant vitamin D supplementation therapy would help to preserve white matter integrity and functional network connectivity in addition to better ameliorating clinical symptoms.

Materials and methods

Participants

Patients were recruited consecutively from Affiliated Psychological Hospital of Anhui Medical University. Healthy controls (HC) were enrolled from the local community via poster advertisements. A total of 98 right-handed subjects were enrolled, including 72 MDD patients and 26 matched HC. Two well-trained clinical psychiatrists confirmed the diagnosis of depression using the MINI-International Neuropsychiatric Interview (M.I.N.I.) following the International Classification of Diseases (ICD-10) criteria. HC were carefully screened to confirm the absence of any psychiatric illness using the M.I.N.I. Right handedness was determined by the Edinburgh handedness inventory (Oldfield, 1971). The exclusion criteria for all participants included: (1) the presence of other psychiatric disorders such as substance-induced (e.g. drug and alcohol) mood disorder, bipolar disorders, anxiety disorders, schizophrenia, substance abuse, or addiction; (2) a history of significant physical or neurological disease; (3) a history of head injury with loss of consciousness; and (4) contraindications for MRI such as pregnancy. Additional exclusion criterion for HC was a family history of major neurological or psychiatric illnesses among their first-degree relatives. For all patients, we used the 24-item Hamilton Rating Scale for Depression (HAM-D) (Williams, 1988) and the 14-item Hamilton Rating Scale for Anxiety (HAMA) (Thompson, 2015) to assess the severity of depression and anxiety symptoms. Notably, we used the Chinese versions of HAM-D and HAMA, which have been documented to show great reliability and validity

(Zheng et al., 1988) and have been widely applied in the Chinese population (Guo et al., 2015; Lai et al., 2021; Shen et al., 2020; Tong et al., 2021). This study was approved by the ethics committee of The First Affiliated Hospital of Anhui Medical University. Written informed consent was obtained from all participants after being given a complete description of the study. This study was registered in the Chinese Clinical Trial Registry (ChiCTR) (Registration No: ChiCTR2100054570) at <http://www.chictr.org.cn>.

Study design

Following successful completion of screening, MDD patients entered a double-blind randomized controlled phase II trial. The 72 patients were randomly allocated into either VD (anti-depressant medication + vitamin D supplementation; $n = 36$) or NVD (antidepressant medication + placebo; $n = 36$) groups. Both groups of patients received their regular antidepressant medication as prescribed by the attending psychiatrists, including selective serotonin reuptake inhibitors (SSRIs), serotonin-norepinephrine reuptake inhibitors (SNRIs), or noradrenergic and specific serotonergic antidepressants (NaSSA). VD group received vitamin D₃ supplements (1600 IU/day), while NVD group received placebos of similar appearance and packaging. The adherence assessment was done based on supplement/placebo count and patient self-report. Notably, the dose of vitamin D used in this study was safe considering the upper tolerable intake level of vitamin D for adults (4000 IU/day) (Patrick & Ames, 2015). Both groups of patients completed two study visits: baseline (before intervention) and follow-up (after an average of 7 months of intervention). This period was selected as the follow-up visit since it is the conventional time frame for determining recovery from a depressive episode and is thus appropriate for evaluating clinical and psychosocial outcomes. MDD patients underwent serum concentration of vitamin D (SCVD) measurement, MRI examination, and clinical assessment at each visit. HC underwent SCVD measurement, MRI examination, and clinical assessment at baseline.

Serum concentration of vitamin D measurement

After an overnight fasting period, peripheral venous blood samples (2 ml) were collected from all participants in the morning of MRI scanning. Samples were sent to the Department of Clinical Laboratory, Affiliated Psychological Hospital of Anhui Medical University immediately for centrifugation and serum was separated. Vitamin D [25(OH)D] was measured in serum using a chemiluminescence immunoassay (CLIA) technique in a fully automated Maglumi 1000 analyzer (SNIBE Co., Ltd., China). Internal quality control provided by the manufacturer was used to assure quality. SCVD was stratified as follows: 30–100 ng/ml (75–250 nmol/L) as sufficiency, 20–30 ng/ml (50–75 nmol/L) as insufficiency, and <20 ng/ml (50 nmol/L) as deficiency (Ringe & Kipshoven, 2012).

Image acquisition

MRI data were obtained on a 3.0-Tesla MR system (Discovery MR750w, General Electric, Milwaukee, WI, USA). Details regarding the image acquisition are presented in the Supplemental Materials.

White matter integrity analysis

For DTI data, standard processing steps were performed by using the FMRIB Software Library (FSL, www.fmrib.ox.ac.uk/fsl). Eddy currents in the gradient coils induce stretches and shears in the diffusion weighted images. These distortions are different for different gradient directions. Eddy current correction implemented in the FSL was adopted to correct for these distortions and simple head motions by registering the diffusion weighted images to a reference volume (i.e. the first b₀ image) using affine transformations. Correspondingly, the diffusion gradient direction of each diffusion weighted image was rotated according to the resultant affine transformation information (Leemans & Jones, 2009). Brain tissues were extracted using FSL's brain extraction tool (<http://www.fmrib.ox.ac.uk/fsl/bet2>). Next, the three-dimensional maps of the diffusion tensor and fractional anisotropy (FA) were calculated by using the DTIFIT toolbox. Then, the tract-based spatial statistics (TBSS) pipeline was conducted (Smith et al., 2006). Briefly, individual FA images were initially non-linearly registered to the Montreal Neurological Institute (MNI) space, with a mean FA image created and thinned to generate a mean FA skeleton. Next, each subject's FA image was projected onto the skeleton via filling the mean FA skeleton with FA values from the nearest relevant tract center by searching perpendicular to the local skeleton structure for maximum FA value. Finally, the Johns Hopkins University (JHU) probabilistic white matter atlas was used to define 50 white matter tracts in the whole brain (Hua et al., 2008). Mean FA within each white matter tract were extracted from the skeletonized FA images for subsequent analysis.

fMRI data preprocessing

Resting-state fMRI data were preprocessed using Statistical Parametric Mapping software (SPM12, <http://www.fil.ion.ucl.ac.uk/spm>) and Data Processing & Analysis for Brain Imaging (DPABI, <http://rfmri.org/dpabi>) (Yan, Wang, Zuo, & Zang, 2016). The first 10 volumes for each subject were discarded and the remaining volumes were corrected for the acquisition time delay between slices. Realignment was then performed to correct the motion between time points. Head motion parameters were computed by estimating the translation in each direction and the angular rotation on each axis for each volume. All participants' BOLD data were within the defined motion thresholds (i.e. maximum translational or rotational motion parameters less than 2.5 mm or 2.5°). We also calculated frame-wise displacement (FD), which indexes the volume-to-volume changes in head position. In the normalization step, individual structural images were firstly co-registered with the mean functional images; the transformed structural images were then segmented and normalized to the MNI space using a high-level nonlinear warping algorithm, i.e. the diffeomorphic anatomical registration through exponentiated Lie algebra (DARTEL) technique (Ashburner, 2007). Finally, each functional volume was spatially normalized to the MNI space using the deformation parameters estimated during the above step and resampled into a 3-mm isotropic voxel. After spatial normalization, all datasets were smoothed with a 6 mm full-width at half-maximum (FWHM) Gaussian kernel.

Independent component analysis

ICA was conducted to parcellate the preprocessed fMRI data with the GIFT toolbox (mialab.mrn.org/software/gift/) and the number

of independent components ($N = 24$) was estimated automatically by the software using the minimum description length criteria. Spatial ICA decomposes the participant data into linear mixtures of spatially independent components that exhibit a unique time course profile. This was achieved by using two data reduction steps. First, principal component analysis was applied to reduce the subject-specific data into 36 principle components. Next, reduced data of all subjects were concatenated across time and decomposed into 24 independent components using the infomax algorithm. To ensure estimation stability, the infomax algorithm was repeated 20 times in ICASSO (Luo et al., 2023b) (<http://research.ics.tkk.fi/ica/icasso/>), and the most central run was selected and analyzed further. Finally, participant specific spatial maps and time courses were obtained using the GICA back reconstruction approach.

We identified as functional networks several independent components that had peak activations in gray matter, showed low spatial overlap with known vascular, ventricular, motion, and susceptibility artifacts, and exhibited primarily low-frequency power. This selection procedure resulted in 11 functional networks out of the 24 independent components obtained (online Supplementary Figure S1): anterior and posterior default mode networks (aDMN and pDMN), dorsal and ventral attention networks (DAN and VAN), posterior and medial visual networks (pVN and mVN), left and right frontoparietal networks (IFPN and rFPN), sensorimotor network (SMN), and salience network (SN), and auditory network (AN).

Before internetwork functional connectivity calculation, the following additional postprocessing steps were performed on the time courses of the selected functional networks: (1) detrending linear, quadratic, and cubic trends; (2) despiking detected outliers; and (3) low-pass filtering with a cut-off frequency of 0.15 Hz. Then, internetwork functional connectivity was estimated as the Pearson's correlation coefficients between pairs of time courses of the functional networks, resulting in a symmetric 11×11 correlation matrix for each subject. Finally, correlations were transformed into Fisher's Z -scores to improve normality.

Statistical analysis

The statistical analyses of demographic and clinical data were performed using the SPSS 23.0 software package (SPSS, Chicago, IL, USA). For cross-sectional analyses of baseline data, we compared age, education, body mass index (BMI), SCVD and FD among VD, NVD, and control groups using one-way analyses of variance (ANOVA). Pearson Chi-square test was used to examine group difference in gender. Two-sample t tests were utilized to compare HAMD, HAMA, illness duration, and intervention duration between VD and NVD groups. For longitudinal analyses of SCVD, HAMD and HAMA, we adopted two-way repeated-measures ANOVA that included the between-subject factor group (VD v. NVD) and the within-subject factor time (baseline v. follow-up). Potential main effects of group and time as well as group-by-time interactions were followed by appropriate two-sample t -tests for comparing groups and paired t -tests for comparing time points. In addition, we calculated longitudinal changes (follow-up - baseline) in SCVD and clinical symptoms (HAMD and HAMA), followed by Pearson's correlation analyses to test their associations within each group. A threshold of $p < 0.05$ was considered to indicate statistical significance.

For neuroimaging data, we initially tested differences in baseline FA of 50 white matter tracts across VD, NVD, and control

groups using one-way ANOVA. Then, we used the above-described two-way repeated-measures ANOVA to assess the main effects and interactions on FA, followed by post hoc two-sample and paired t -tests. Notably, in case of a significant group-by-time interaction on FA of a white matter tract, we further adopted the same analytic strategy (i.e. a combination of two-way repeated-measures ANOVA and post hoc t -tests) to examine functional connectivity between the functional networks connected by that white matter tract. For completeness, we also carried out an exploratory investigation of other functional network connectivity. Moreover, we conducted within-group correlations between changes in neuroimaging measures (FA and functional connectivity) and clinical variables (SCVD, HAMD, and HAMA). For these analyses, multiple comparison correction was performed using the false discovery rate (FDR) method with a corrected significance level of $p < 0.05$.

Sensitivity analysis

To test the possible effects of antidepressants and illness duration on our results, we included antidepressant types (SSRIs, SNRIs, and NaSSA) and illness duration as nuisance covariates in our analyses.

Results

Demographic and clinical characteristics at baseline

Eligibility, examinations, randomization, and follow-up of the participants are illustrated in Fig. 1. 20 participants were lost to follow-up and six were excluded due to poor MRI quality. Ultimately, a total of 72 participants completed the study, including 20 patients in VD group, 26 patients in NVD group, and 26 HC. Out of the 26 patients in NVD group, 2 were excluded from fMRI analysis due to excessive head motion during scanning. Demographic and clinical characteristics of the participants at baseline are shown in Table 1. The three groups did not diverge on demographic variables including gender, age, education, BMI, and FD. VD and NVD groups did not differ in clinical variables including HAMD, HAMA, illness duration, and intervention duration. With respect to baseline SCVD, there was a significant difference among the three groups, with post hoc t -tests demonstrating lower SCVD in VD and NVD groups relative to HC, but no difference between VD and NVD groups (Fig. 2).

Serum concentration of vitamin D and clinical symptoms

Two-way repeated-measures ANOVA revealed a significant group-by-time interaction effect on SCVD ($F = 44.137$, $p < 0.001$) (Fig. 2). Post hoc analyses demonstrated increased SCVD from baseline to follow-up in VD group, but no change in NVD group. At follow-up, there was no difference in SCVD between VD and control groups, but NVD group still showed lower SCVD than HC. In terms of clinical symptoms, both VD and NVD groups exhibited significant reductions in HAMD (Fig. 3a) and HAMA (Fig. 3c) from baseline to follow-up, indicating improvement in depression and anxiety symptoms. However, no significant group-by-time interactions were found for HAMD ($F = 1.119$, $p = 0.296$) or HAMA ($F = 0.124$, $p = 0.726$). Moreover, we observed significant negative correlations of SCVD change with changes in HAMD ($r = -0.539$, $p = 0.017$) (Fig. 3b) and HAMA ($r = -0.675$, $p = 0.002$) (Fig. 3d) in VD group but not

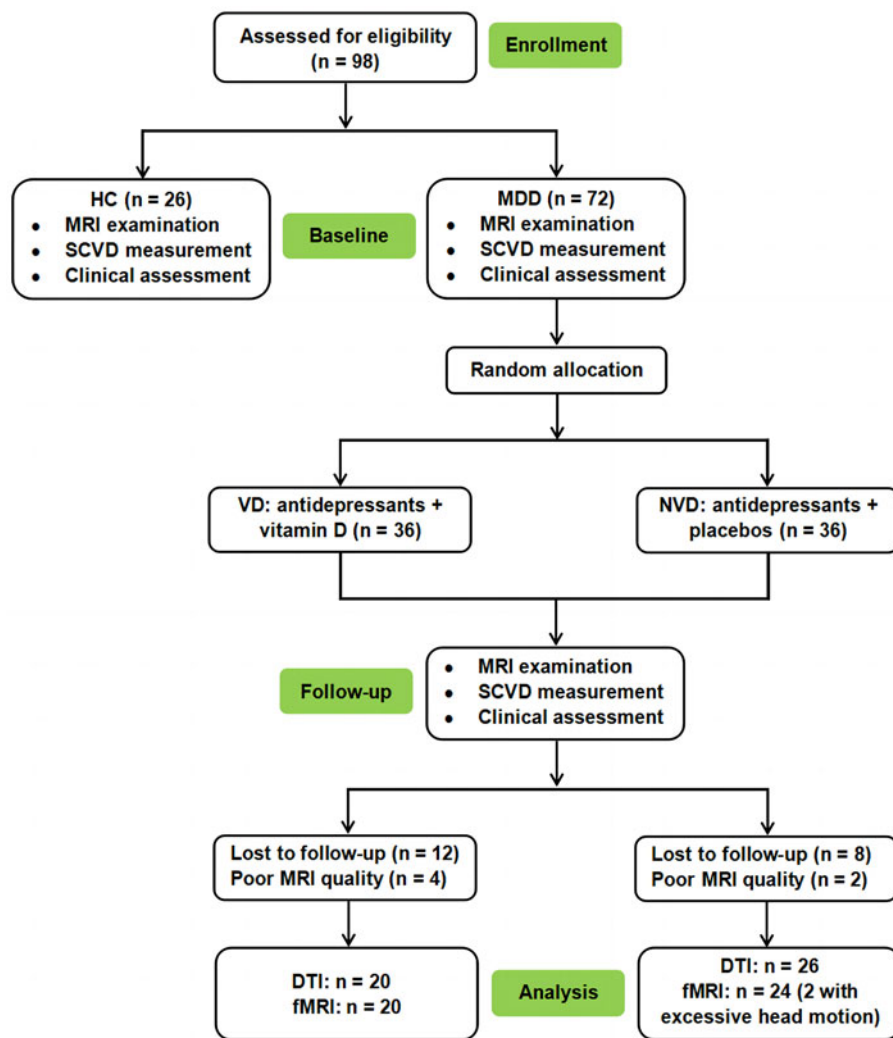


Figure 1. Flowchart of the study design. Abbreviations: HC, healthy controls; MDD, major depressive disorder; MRI, magnetic resonance imaging; SCVD, serum concentration of vitamin D; VD, vitamin D supplementation; NVD, no vitamin D supplementation; DTI, diffusion tensor imaging; fMRI, functional magnetic resonance imaging.

NVD group (HAMD, $r = -0.099$, $p = 0.637$; HAMA, $r = -0.055$, $p = 0.795$). None of the patients complained about adverse drug reactions.

White matter integrity and functional network connectivity

At baseline, FA of 50 white matter tracts did not differ among VD, NVD, and control groups (online Supplementary Table S1 in the Supplementary Materials). Two-way repeated-measures ANOVA showed a significant group-by-time interaction effect on FA of right inferior fronto-occipital fasciculus (IFOF) ($F = 14.677$, $p < 0.001$) that survived FDR correction (Fig. 4 and online Supplementary Table S2 in the Supplementary Materials). Post hoc analyses demonstrated decreased FA of right IFOF from baseline to follow-up in NVD group, but no change in VD group. At follow-up, NVD group showed lower FA of right IFOF than HC, but there was still no difference between VD group and HC.

Since right IFOF connects right frontal and occipital cortex, we focused our functional connectivity analyses on functional networks involving right frontal cortex (rFPN, aDMN, and VAN) and right occipital cortex (mVN and pVN). Two-way repeated-measures ANOVA revealed a significant group-by-time interaction effect on functional connectivity between rFPN and mVN ($F = 7.875$, $p = 0.008$) that survived FDR correction

(Fig. 5). Post hoc analyses demonstrated decreased rFPN-mVN connectivity from baseline to follow-up in NVD group, but no change in VD group. The exploratory investigation did not reveal any significant group-by-time interaction effects on other functional networks connectivity ($p > 0.05$, FDR corrected) (online Supplementary Table S3 in the Supplementary Materials).

No significant correlations between changes in neuroimaging measures (FA and functional connectivity) and clinical variables (SCVD, HAMD, and HAMA) were observed in either group (online Supplementary Table S4 in the Supplementary Materials).

Sensitivity analysis

After controlling for antidepressant types and illness duration, the group-by-time interaction effects on SCVD ($F = 45.402$, $p < 0.001$), FA of right IFOF ($F = 13.744$, $p < 0.001$), and rFPN-mVN connectivity ($F = 7.657$, $p = 0.009$) remained significant. The group-by-time interaction effects on HAMD ($F = 1.342$, $p = 0.253$) and HAMA ($F = 0.088$, $p = 0.768$) were still not significant. The correlation between changes in SCVD and HAMA remained significant (partial correlation coefficient [pr] = -0.512 , $p = 0.036$), but the correlation between changes in SCVD and HAMD was not significant ($pr = -0.357$, $p = 0.159$).

Table 1. Demographic and clinical characteristics of the participants at baseline

Characteristics	VD	NVD	HC	Statistics	<i>p</i> Value
Gender (female/male)	15/5	17/9	19/7	$\chi^2 = 0.605$	0.739
Age (years)	46.75 ± 7.40	42.42 ± 11.04	47.46 ± 10.98	$F = 1.832$	0.168
Education (years)	8.35 ± 3.07	9.39 ± 3.54	9.58 ± 4.05	$F = 0.670$	0.515
BMI (kg/m ²)	21.90 ± 3.15	23.01 ± 3.79	23.51 ± 2.48	$F = 1.465$	0.238
SCVD (nmol/L)	39.09 ± 11.44	42.91 ± 19.28	62.41 ± 15.68	$F = 14.637$	<0.001
FD ^a (mm)	0.13 ± 0.07	0.12 ± 0.07	0.16 ± 0.09	$F = 1.415$	0.250
HAMD	29.90 ± 10.10	32.77 ± 11.54	–	$t = -0.881$	0.383
HAMA	21.50 ± 8.24	21.23 ± 7.24	–	$t = 0.118$	0.907
Illness duration (months)	42.97 ± 76.91	72.85 ± 75.20	–	$t = -1.323$	0.193
Intervention duration (months)	6.82 ± 2.27	6.40 ± 1.84	–	$t = 0.700$	0.488
Antidepressant medication	–	–	–	–	–
SSRIs	13	20	–	–	–
SNRIs	6	4	–	–	–
NaSSA	1	2	–	–	–

Except for gender designation, data are expressed as mean ± standard deviation.

Abbreviations: VD, vitamin D supplementation; NVD, no vitamin D supplementation; HC, healthy controls; BMI, body mass index; SCVD, serum concentration of vitamin D; FD, frame-wise displacement; HAMD, Hamilton Rating Scale for Depression; HAMA, Hamilton Rating Scale for Anxiety; SSRIs, selective serotonin reuptake inhibitors; SNRIs, serotonin norepinephrine reuptake inhibitors; NaSSA, noradrenergic and specific serotonergic antidepressant.

^aThe data are available for 24 of 26 patients in NVD group.

Discussion

This is the first RCT to investigate the effects of vitamin D supplementation on brain structural and functional connectivity in MDD patients using a combination of DTI and resting-state fMRI. After an average of 7 months of intervention, both VD and NVD groups showed significant improvement in depression and anxiety symptoms, but with no significant differences between the two groups. However, a greater SCVD increase was found to be associated with greater improvement in depression and anxiety symptoms in VD group. More importantly, neuroimaging data demonstrated decreased FA of right IFOF along with decreased rFPN-mVN functional connectivity after intervention in NVD group, but no changes in VD group.

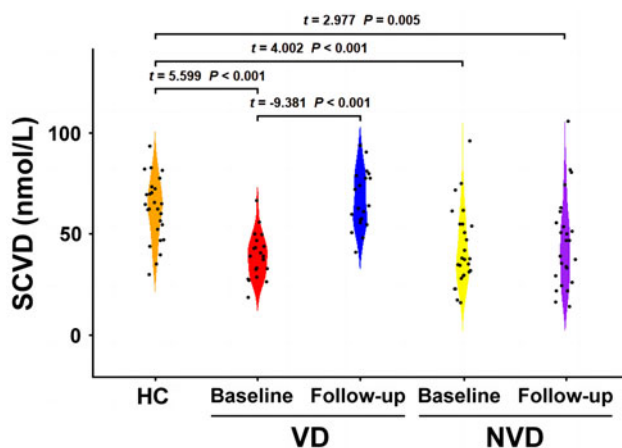


Figure 2. SCVD at baseline and follow-up. Abbreviations: HC, healthy controls; VD, vitamin D supplementation; NVD, no vitamin D supplementation; SCVD, serum concentration of vitamin D.

contribution of these findings is the demonstration that vitamin D supplementation as adjunctive therapy to antidepressants may not only contribute to improvement in clinical symptoms but also help to preserve white matter integrity and functional network connectivity in MDD patients, supporting the neuroprotective and anti-inflammatory role of vitamin D.

Previous studies examining the effects of vitamin D supplementation on MDD have produced mixed findings, with some demonstrating that vitamin D supplementation is beneficial for

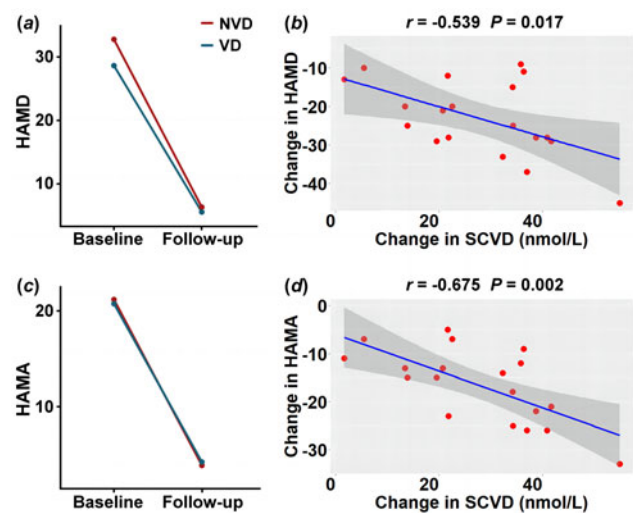


Figure 3. Longitudinal changes in clinical symptoms and their associations with SCVD change. Changes in HAMD (a) and their associations with SCVD change in VD group (b). Changes in HAMA (c) and their associations with SCVD change in VD group (d). Abbreviations: HAMD, Hamilton Rating Scale for Depression; HAMA, Hamilton Rating Scale for Anxiety; SCVD, serum concentration of vitamin D; VD, vitamin D supplementation; NVD, no vitamin D supplementation.

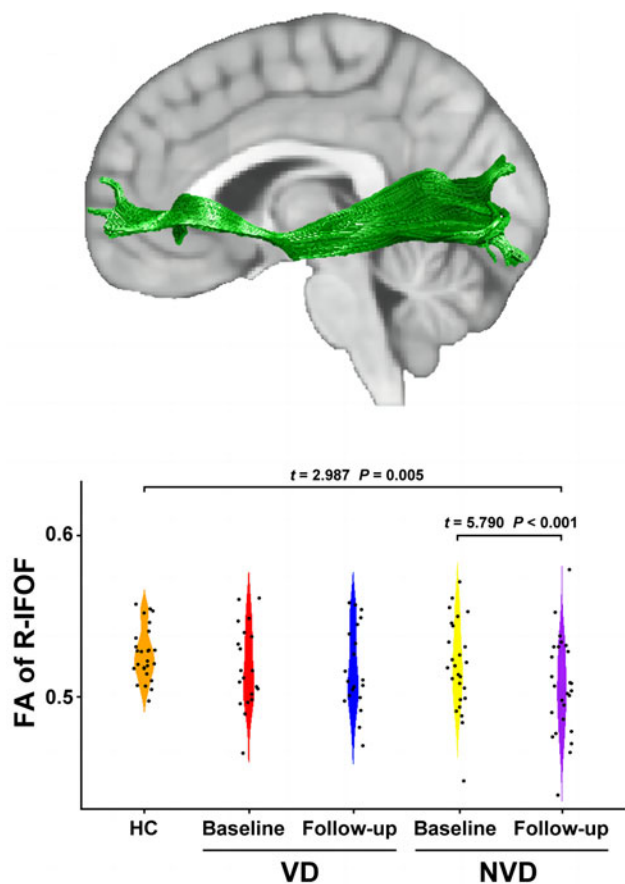


Figure 4. FA of right IFOF at baseline and follow-up. Abbreviations: FA, fractional anisotropy; IFOF, inferior fronto-occipital fasciculus; HC, healthy controls; VD, vitamin D supplementation; NVD, no vitamin D supplementation; R, right.

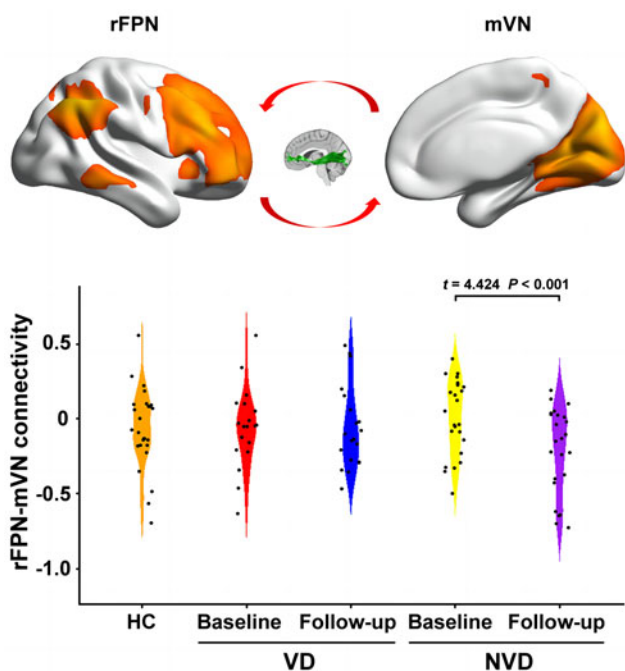


Figure 5. Functional connectivity between rFPN and mVN at baseline and follow-up. Abbreviations: HC, healthy controls; VD, vitamin D supplementation; NVD, no vitamin D supplementation; rFPN, right frontoparietal network; mVN, medial visual network.

depression treatment and prevention (Alavi, Khademalhosseini, Vakili, & Assarian, 2019; Alghamdi et al., 2020; Casseb, Kaster, & Rodrigues, 2019; Cheng et al., 2020; de Koning et al., 2015; Kaviani, Nikooyeh, Zand, Yaghmaei, & Neyestani, 2020; Khoraminy, Tehrani-Doost, Jazayeri, Hosseini, & Djazayeri, 2013; Parker et al., 2017) and others showing no effects (Gowda et al., 2015; Okereke et al., 2020; Okereke & Singh, 2016). These heterogeneous results may be attributed to differences in the samples or the dosage and duration of vitamin D supplementation. In our RCT, the antidepressants plus vitamin D supplements combination was not superior to the antidepressants plus placebo combination in controlling depression and anxiety symptoms after an average of 7 months of intervention, which may be due to the small sample size. However, we found that a greater SCVD increase was associated with greater improvement in depression and anxiety symptoms in VD group, giving indirect support for the view that adjuvant vitamin D supplementation therapy could contribute to better clinical improvement in MDD patients. The underlying biological mechanisms are not completely understood but there are several hypotheses. First, the active form of vitamin D can be produced by the brain and vitamin D receptors are widely distributed across distinct brain systems (e.g. the prefrontal cortex and limbic system) (Eyles et al., 2005). Vitamin D in the brain can regulate production of serotonin, which is one of the key neurotransmitters involved in mood regulation (Kesby et al., 2017; Patrick & Ames, 2015). Second, converging evidence indicates that an imbalance between the glutamatergic excitatory and GABAergic inhibitory pathways is implicated in the pathophysiology of MDD (Croarkin, Levinson, & Daskalakis, 2011; Hasler et al., 2007). This imbalance can lead to increased neuronal levels of Ca^{2+} that may contribute to depression; vitamin D can reduce Ca^{2+} levels via its function to maintain the expression of the Ca^{2+} pumps and buffers, which may explain how it acts to ameliorate depressive symptoms (Berridge, 2017). Third, vitamin D may play a neuroimmunological role by regulating the activity and expression of P2X7 receptors, thus preventing the excessive activation of the immune system that is caused by long-term stress, protecting nerve cells, and producing antidepressant effects (Geng et al., 2019).

Multimodal brain imaging data demonstrated that MDD patients, after antidepressants + placebo intervention, showed decreased FA of right IFOF and decreased functional connectivity between rFPN and mVN connected by right IFOF. The present observation of concurrent structural and functional connectivity alterations is consistent with the hypothesis that brain network function is shaped and constrained by underlying structure (Honey, Kotter, Breakspear, & Sporns, 2007; Honey et al., 2009). The FPN is responsible for implementing cognitive control and consists of flexible hubs that regulate distributed systems (e.g. visual, limbic, and motor), thereby playing a central role in mental health (Cole, Repovs, & Anticevic, 2014). The mVN is implicated in detecting and processing visual stimuli. Extensive research has established the presence of abnormal functional connectivity of FPN and mVN in MDD patients (Kaiser, Andrews-Hanna, Wager, & Pizzagalli, 2015; Li et al., 2020; Luo et al., 2021; Yu et al., 2019; Zhong et al., 2017; Zhu et al., 2021). The observed brain structural and functional connectivity changes in NVD group may be trait brain abnormalities of MDD, a detrimental consequence of antidepressant medication, or a combination of both. Of note, we did not find such brain changes in VD group, that is, white matter integrity and functional network connectivity were preserved in MDD patients receiving both

antidepressant medication and vitamin D supplementation. This finding suggests that adjuvant vitamin D supplementation therapy might have a protective effect on the brain of MDD patients.

There has been increasing recognition of the neuroprotective and neurotrophic actions of vitamin D. FA represents white matter integrity that is related to many factors including axonal count and density, degree of myelination, and fiber organization (Winston, 2012). Changes in FA may reflect multiple white matter micro-structural alterations, such as altered axonal density or diameter, abnormal myelination, or altered coherence of fiber tracts. Vitamin D is a potent neuromodulatory compound that can potentiate axon regeneration; in addition, vitamin D could play a protective role by restricting Wallerian degeneration, i.e. degeneration of the distal part to the injury (Chabas et al., 2008). There is also empirical evidence that vitamin D can enhance neural stem cell proliferation and oligodendrocyte differentiation (Shirazi, Rasouli, Ciric, Rostami, & Zhang, 2015). Neurotransmitter dysfunction has been suggested to be involved in the pathophysiology of MDD. For instance, past studies have reported reduced histamine H1 receptor binding (Yanai & Tashiro, 2007), reduced GABA levels (Croarkin et al., 2011), and reduced muscarinic acetylcholine receptor binding (Nikolaus, Hautzel, Heinzel, & Muller, 2012) in the frontal and occipital cortex in MDD patients. It is generally accepted that vitamin D implicates the synthesis, release, and regulation of neurotransmitters (Kesby et al., 2017; Patrick & Ames, 2015). This has led to some speculation that vitamin D supplements help preserve structural and functional connectivity through their beneficial effects on neurotransmitter systems. In addition, depression is associated with elevated biomarkers of inflammation (e.g. cytokines and C-reactive protein), which have been linked to decreased brain connectivity (Felger et al., 2016). Intense research indicates that vitamin D, a regulator of key components of the immune system, can inhibit abnormal activation of the immune system and thereby has anti-inflammatory activity (Wei & Christakos, 2015). Despite this growing evidence, the exact mechanisms underlying the neuroprotective effect of vitamin D in MDD are rather complex and need further investigation.

Some limitations of our work should be noted. First, although our small sample size is common for longitudinal neuroimaging studies, it limits the statistical power and the generalizability of our findings. In the future, a larger sample is needed to validate these preliminary findings. Second, most of the MDD patients were antidepressant-medicated and chronic, which may introduce confounds of antidepressant medication and illness duration. Although our results held even after controlling for antidepressant types and illness duration, future studies in drug-naïve first-episode patients with MDD are warranted to further eliminate these confounding factors. Third, the neuroprotective effect of vitamin D in MDD patients is a preliminary finding that needs to be validated in future animal studies. Fourth, it should be noted that patients with anxiety disorders were excluded. Since anxiety is frequently comorbid with MDD, this reduces the generalizability of the findings to the general population with MDD. Fifth, we focused our analysis on static functional network connectivity rather than dynamic connectivity. Since the brain connectome is time-varying and dynamic in ways that are themselves clinically relevant (Luo et al., 2023a; You et al., 2022), examination of dynamic functional network connectivity alterations will be part of our future investigations. Finally, we

failed to collect more relevant information about participants' life-style profiles. Further analysis of these data may facilitate the interpretation of our findings.

In conclusion, our RCT demonstrated that a greater SCVD increase was associated with greater improvement in depression and anxiety symptoms in MDD patients who received a combined intervention of antidepressants and vitamin D. More importantly, multimodal neuroimaging data showed that vitamin D supplementation was able to preserve structural and functional connectivity between the frontal and occipital cortex in MDD patients. Our results suggest that vitamin D supplementation as adjunctive therapy to antidepressants may not only contribute to improvement in clinical symptoms but also have a protective effect on the brain of MDD patients. More broadly, these findings might hold high translational value in informing future MDD intervention in clinical settings.

Supplementary material. The supplementary material for this article can be found at <https://doi.org/10.1017/S0033291724000539>.

Data availability statement. Data that support the findings of this study are publicly available in the study's Open Science Framework repository (<https://osf.io/j9fc2/>).

Acknowledgements. The authors are grateful to study participants for volunteering their time. We greatly appreciate the Chinese psychiatrists and psychologists who have developed the Chinese versions of the HAMD and HAMA.

Funding statement. The study was supported by the STI2030-Major Projects (grant number: 2022ZD0205200), the National Natural Science Foundation of China (grant numbers: 82371928 and 82071905), the Anhui Provincial Natural Science Foundation (grant number: 2308085MH277), the Outstanding Youth Support Project of Anhui Province Universities (grant number: gxyqZD2022026), the Scientific Research Key Project of Anhui Province Universities (grant number: 2022AH051135), the Scientific Research Foundation of Anhui Medical University (grant number: 2022xkj143), the Anhui University Collaborative Innovation Project (grant number: GXXT-2021-065), and the Natural Science Research Project of Anhui Province Universities (grant number: KJ2021ZD0037).

Competing interests. All the authors declare that they have no conflict of interest.

References

- Aghajafari, F., Letourneau, N., Mahinpey, N., Cosic, N., & Giesbrecht, G. (2018). Vitamin D deficiency and antenatal and postpartum depression: A systematic review. *Nutrients*, 10(4), 478. 10.3390/nu10040478.
- Alavi, N. M., Khademalhosseini, S., Vakili, Z., & Assarian, F. (2019). Effect of vitamin D supplementation on depression in elderly patients: A randomized clinical trial. *Clinical Nutrition*, 38(5), 2065–2070. doi:10.1016/j.clnu.2018.09.011
- Albert, K. M., Potter, G. G., Boyd, B. D., Kang, H., & Taylor, W. D. (2019). Brain network functional connectivity and cognitive performance in major depressive disorder. *Journal of Psychiatric Research*, 110, 51–56. doi:10.1016/j.jpsychires.2018.11.020
- Alexander, A. L., Lee, J. E., Lazar, M., & Field, A. S. (2007). Diffusion tensor imaging of the brain. *Neurotherapeutics: The Journal of the American Society for Experimental NeuroTherapeutics*, 4(3), 316–329. doi:10.1016/j.nurt.2007.05.011
- Alghamdi, S., Alsulami, N., Khoja, S., Alsufiani, H., Tayeb, H. O., & Tarazi, F. I. (2020). Vitamin D supplementation ameliorates severity of major depressive disorder. *Journal of Molecular Neuroscience: MN*, 70(2), 230–235. doi:10.1007/s12031-019-01461-2
- Alroy, I., Towers, T. L., & Freedman, L. P. (1995). Transcriptional repression of the interleukin-2 gene by vitamin D3: Direct inhibition of NFATp/AP-1

- complex formation by a nuclear hormone receptor. *Molecular and Cellular Biology*, 15(10), 5789–5799. doi:10.1128/mcb.15.10.5789
- Anglin, R. E., Samaan, Z., Walter, S. D., & McDonald, S. D. (2013). Vitamin D deficiency and depression in adults: Systematic review and meta-analysis. *The British Journal of Psychiatry: the Journal of Mental Science*, 202, 100–107. doi:10.1192/bjp.bp.111.106666
- Ashburner, J. (2007). A fast diffeomorphic image registration algorithm. *NeuroImage*, 38(1), 95–113. doi:10.1016/j.neuroimage.2007.07.007
- Berridge, M. J. (2015). Vitamin D cell signalling in health and disease. *Biochemical and Biophysical Research Communications*, 460(1), 53–71. doi:10.1016/j.bbrc.2015.01.008
- Berridge, M. J. (2017). Vitamin D and depression: Cellular and regulatory mechanisms. *Pharmacological reviews*, 69(2), 80–92. doi:10.1124/pr.116.013227
- Bersani, F. S., Ghezzi, F., Maraone, A., Vicinanza, R., Cavaggioni, G., Biondi, M., & Pasquini, M. (2019). The relationship between Vitamin D and depressive disorders. *Rivista di psichiatria*, 54(6), 229–234. doi:10.1708/3281.32541
- Beurel, E., Toups, M., & Nemeroff, C. B. (2020). The bidirectional relationship of depression and inflammation: Double trouble. *Neuron*, 107(2), 234–256. doi:10.1016/j.neuron.2020.06.002
- Briggs, R., McCarroll, K., O'Halloran, A., Healy, M., Kenny, R. A., & Laird, E. (2019). Vitamin D deficiency is associated with an increased likelihood of incident depression in Community-Dwelling older adults. *Journal of the American Medical Directors Association*, 20(5), 517–523. doi:10.1016/j.jamda.2018.10.006
- Casseb, G. A. S., Kaster, M. P., & Rodrigues, A. L. S. (2019). Potential role of vitamin D for the management of depression and anxiety. *CNS drugs*, 33(7), 619–637. doi:10.1007/s40263-019-00640-4
- Chabas, J. F., Alluin, O., Rao, G., Garcia, S., Lavaut, M. N., Risso, J. J., ... Feron, F. (2008). Vitamin D2 potentiates axon regeneration. *Journal of Neurotrauma*, 25(10), 1247–1256. doi:10.1089/neu.2008.0593
- Chen, G., Guo, Y., Zhu, H., Kuang, W., Bi, F., Ai, H., ... Gong, Q. (2017). Intrinsic disruption of white matter microarchitecture in first-episode, drug-naïve major depressive disorder: A voxel-based meta-analysis of diffusion tensor imaging. *Progress in Neuro-Psychopharmacology & Biological Psychiatry*, 76, 179–187. doi:10.1016/j.pnpb.2017.03.011
- Chen, G., Hu, X., Li, L., Huang, X., Lui, S., Kuang, W., ... Gong, Q. (2016). Disorganization of white matter architecture in major depressive disorder: A meta-analysis of diffusion tensor imaging with tract-based spatial statistics. *Scientific Reports*, 6, 21825. doi:10.1038/srep21825
- Chen, H., Liu, K., Zhang, B., Zhang, J., Xue, X., Lin, Y., ... Deng, Y. (2019). More optimal but less regulated dorsal and ventral visual networks in patients with major depressive disorder. *Journal of Psychiatric Research*, 110, 172–178. doi:10.1016/j.jpsychires.2019.01.005
- Cheng, Y. C., Huang, Y. C., & Huang, W. L. (2020). The effect of vitamin D supplement on negative emotions: A systematic review and meta-analysis. *Depression and Anxiety*, 37(6), 549–564. doi:10.1002/da.23025
- Cipriani, A., Furukawa, T. A., Salanti, G., Chaimani, A., Atkinson, L. Z., Ogawa, Y., ... Geddes, J. R. (2018). Comparative efficacy and acceptability of 21 antidepressant drugs for the acute treatment of adults with major depressive disorder: A systematic review and network meta-analysis. *The Lancet*, 391(10128), 1357–1366. doi:10.1016/s0140-6736(17)32802-7
- Cipriani, A., Zhou, X., Del Giovane, C., Hetrick, S. E., Qin, B., Whittington, C., ... Xie, P. (2016). Comparative efficacy and tolerability of antidepressants for major depressive disorder in children and adolescents: A network meta-analysis. *Lancet (London, England)*, 388(10047), 881–890. doi:10.1016/S0140-6736(16)30385-3
- Cole, M. W., Repovs, G., & Anticevic, A. (2014). The frontoparietal control system: A central role in mental health. *The Neuroscientist: a Review Journal Bringing Neurobiology, Neurology and Psychiatry*, 20(6), 652–664. doi:10.1177/1073858414525995
- Croarkin, P. E., Levinson, A. J., & Daskalakis, Z. J. (2011). Evidence for GABAergic inhibitory deficits in major depressive disorder. *Neuroscience and Biobehavioral Reviews*, 35(3), 818–825. doi:10.1016/j.neubiorev.2010.10.002
- de Koning, E. J., van Schoor, N. M., Penninx, B. W., Elders, P. J., Heijboer, A. C., Smit, J. H., ... Lips, P. (2015). Vitamin D supplementation to prevent depression and poor physical function in older adults: Study protocol of the D-Vitaal study, a randomized placebo-controlled clinical trial. *BMC Geriatrics*, 15, 151. doi:10.1186/s12877-015-0148-3
- de Kwaasteniet, B., Ruhe, E., Caan, M., Rive, M., Olabarriaga, S., Groefsema, M., ... Denys, D. (2013). Relation between structural and functional connectivity in major depressive disorder. *Biological Psychiatry*, 74(1), 40–47. doi:10.1016/j.biopsych.2012.12.024
- Di Somma, C., Scaranò, E., Barrea, L., Zhukouskaya, V. V., Savastano, S., Mele, C., ... Marzullo, P. (2017). Vitamin D and neurological diseases: An endocrine view. *International Journal of Molecular Sciences*, 18(11), 2482. doi:10.3390/ijms18112482
- Eyles, D. W., Burne, T. H., & McGrath, J. J. (2013). Vitamin D, effects on brain development, adult brain function and the links between low levels of vitamin D and neuropsychiatric disease. *Frontiers in Neuroendocrinology*, 34(1), 47–64. doi:10.1016/j.yfrne.2012.07.001
- Eyles, D. W., Smith, S., Kinobe, R., Hewison, M., & McGrath, J. J. (2005). Distribution of the vitamin D receptor and 1 alpha-hydroxylase in human brain. *Journal of Chemical Neuroanatomy*, 29(1), 21–30. doi:10.1016/j.jchemneu.2004.08.006
- Felger, J. C., Li, Z., Haroon, E., Woolwine, B. J., Jung, M. Y., Hu, X., & Miller, A. H. (2016). Inflammation is associated with decreased functional connectivity within corticostriatal reward circuitry in depression. *Molecular Psychiatry*, 21(10), 1358–1365. doi:10.1038/mp.2015.168
- Fox, M. D., & Raichle, M. E. (2007). Spontaneous fluctuations in brain activity observed with functional magnetic resonance imaging. *Nature Reviews Neuroscience*, 8(9), 700–711. doi:10.1038/nrn2201
- Geng, C., Shaikh, A. S., Han, W., Chen, D., Guo, Y., & Jiang, P. (2019). Vitamin D and depression: Mechanisms, determination and application. *Asia Pacific Journal of Clinical Nutrition*, 28(4), 689–694. doi:10.6133/apjcn.201912_28(4).0003
- Gowda, U., Mutowo, M. P., Smith, B. J., Wluka, A. E., & Renzaho, A. M. (2015). Vitamin D supplementation to reduce depression in adults: Meta-analysis of randomized controlled trials. *Nutrition (Burbank, Los Angeles County, Calif.)*, 31(3), 421–429. doi:10.1016/j.nut.2014.06.017
- Guidotti, A., Auta, J., Chen, Y., Davis, J. M., Dong, E., Gavin, D. P., ... Tueting, P. (2011). Epigenetic GABAergic targets in schizophrenia and bipolar disorder. *Neuropharmacology*, 60(7–8), 1007–1016. doi:10.1016/j.neuropharm.2010.10.021
- Guo, T., Xiang, Y. T., Xiao, L., Hu, C. Q., Chiu, H. F., Ungvari, G. S., ... Wang, G. (2015). Measurement-Based care versus standard care for major depression: A randomized controlled trial with blind raters. *The American Journal of Psychiatry*, 172(10), 1004–1013. doi:10.1176/appi.ajp.2015.14050652
- Hasler, G., van der Veen, J. W., Tuminis, T., Meyers, N., Shen, J., & Drevets, W. C. (2007). Reduced prefrontal glutamate/glutamine and gamma-aminobutyric acid levels in major depression determined using proton magnetic resonance spectroscopy. *Archives of General Psychiatry*, 64(2), 193–200. doi:10.1001/archpsyc.64.2.193
- Honey, C. J., Kotter, R., Breakspear, M., & Sporns, O. (2007). Network structure of cerebral cortex shapes functional connectivity on multiple time scales. *Proceedings of the National Academy of Sciences of the United States of America*, 104(24), 10240–10245. doi:10.1073/pnas.0701519104
- Honey, C. J., Sporns, O., Cammoun, L., Gigandet, X., Thiran, J. P., Meuli, R., & Hagmann, P. (2009). Predicting human resting-state functional connectivity from structural connectivity. *Proceedings of the National Academy of Sciences of the United States of America*, 106(6), 2035–2040. doi:10.1073/pnas.0811168106
- Hua, K., Zhang, J., Wakana, S., Jiang, H., Li, X., Reich, D. S., ... Mori, S. (2008). Tract probability maps in stereotaxic spaces: Analyses of white matter anatomy and tract-specific quantification. *NeuroImage*, 39(1), 336–347. doi:10.1016/j.neuroimage.2007.07.053
- Jacka, F. N., Kremer, P. J., Leslie, E. R., Berk, M., Patton, G. C., Toumbourou, J. W., & Williams, J. W. (2010). Associations between diet quality and depressed mood in adolescents: Results from the Australian Healthy Neighbourhoods Study. *The Australian and New Zealand Journal of Psychiatry*, 44(5), 435–442. doi:10.3109/00048670903571598
- Jacka, F. N., Pasco, J. A., Williams, L. J., Leslie, E. R., Dodd, S., Nicholson, G. C., ... Berk, M. (2011). Lower levels of physical activity in childhood associated with adult depression. *Journal of Science and Medicine in Sport*, 14(3), 222–226. doi:10.1016/j.jsams.2010.10.458

- Jiang, J., Zhao, Y. J., Hu, X. Y., Du, M. Y., Chen, Z. Q., Wu, M., ... Gong, Q. Y. (2017). Microstructural brain abnormalities in medication-free patients with major depressive disorder: A systematic review and meta-analysis of diffusion tensor imaging. *Journal of Psychiatry & Neuroscience: JPN*, 42(3), 150–163.
- Jiao, K., Xu, H., Teng, C., Song, X., Xiao, C., Fox, P. T., ... Zhong, Y. (2020). Connectivity patterns of cognitive control network in first episode medication-naïve depression and remitted depression. *Behavioural Brain Research*, 379, 112381. doi:10.1016/j.bbr.2019.112381
- Ju, S. Y., Lee, Y. J., & Jeong, S. N. (2013). Serum 25-hydroxyvitamin D levels and the risk of depression: A systematic review and meta-analysis. *The Journal of Nutrition, Health & Aging*, 17(5), 447–455. doi:10.1007/s12603-012-0418-0
- Kaiser, R. H., Andrews-Hanna, J. R., Wager, T. D., & Pizzagalli, D. A. (2015). Large-scale network dysfunction in major depressive disorder: A meta-analysis of resting-state functional connectivity. *JAMA Psychiatry*, 72(6), 603–611. doi:10.1001/jamapsychiatry.2015.0071
- Kaluff, A. V., Eremin, K. O., & Tuohimaa, P. (2004). Mechanisms of neuroprotective action of vitamin D(3). *Biochemistry. Biokhimiia*, 69(7), 738–741. doi:10.1023/b:biry.0000040196.65686.2f
- Kaviani, M., Nikooyeh, B., Zand, H., Yaghmaei, P., & Neyestani, T. R. (2020). Effects of vitamin D supplementation on depression and some involved neurotransmitters. *Journal of Affective Disorders*, 269, 28–35. doi:10.1016/j.jad.2020.03.029
- Kesby, J. P., Turner, K. M., Alexander, S., Eyles, D. W., McGrath, J. J., & Burne, T. H. J. (2017). Developmental vitamin D deficiency alters multiple neurotransmitter systems in the neonatal rat brain. *International Journal of Developmental Neuroscience*, 62, 1–7. doi:10.1016/j.ijdevneu.2017.07.002
- Khoraminy, N., Tehrani-Doost, M., Jazayeri, S., Hosseini, A., & Djazayeri, A. (2013). Therapeutic effects of vitamin D as adjunctive therapy to fluoxetine in patients with major depressive disorder. *The Australian and New Zealand Journal of Psychiatry*, 47(3), 271–275. doi:10.1177/0004867412465022
- Kongsbak, M., Levring, T. B., Geisler, C., & von Essen, M. R. (2013). The vitamin D receptor and T cell function. *Frontiers in Immunology*, 4, 148. doi:10.3389/fimmu.2013.00148
- Lai, W. T., Deng, W. F., Xu, S. X., Zhao, J., Xu, D., Liu, Y. H., ... Rong, H. (2021). Shotgun metagenomics reveals both taxonomic and tryptophan pathway differences of gut microbiota in major depressive disorder patients. *Psychological Medicine*, 51(1), 90–101. doi:10.1017/S0033291719003027
- Leemans, A., & Jones, D. K. (2009). The B-matrix must be rotated when correcting for subject motion in DTI data. *Magnetic Resonance in Medicine*, 61(6), 1336–1349. doi:10.1002/mrm.21890
- Li, H., Lin, X., Liu, L., Su, S., Zhu, X., Zheng, Y., ... Sun, X. (2020). Disruption of the structural and functional connectivity of the frontoparietal network underlies symptomatic anxiety in late-life depression. *NeuroImage: Clinical*, 28, 102398. doi:10.1016/j.nicl.2020.102398
- Libuda, L., Antel, J., Hebebrand, J., & Focker, M. (2017). [Nutrition and mental diseases: Focus depressive disorders]. *Der Nervenarzt*, 88(1), 87–101. doi:10.1007/s00115-016-0262-2
- Liu, G., Jiao, K., Zhong, Y., Hao, Z., Wang, C., Xu, H., ... Zhang, N. (2021). The alteration of cognitive function networks in remitted patients with major depressive disorder: An independent component analysis. *Behavioural Brain Research*, 400, 113018. doi:10.1016/j.bbr.2020.113018
- Liu, J., Xu, P., Zhang, J., Jiang, N., Li, X., & Luo, Y. (2019). Ventral attention-network effective connectivity predicts individual differences in adolescent depression. *Journal of Affective Disorders*, 252, 55–59. doi:10.1016/j.jad.2019.04.033
- Liu, Y., Chen, Y., Liang, X., Li, D., Zheng, Y., Zhang, H., ... Qiu, S. (2020). Altered resting-state functional connectivity of multiple networks and disrupted correlation with executive function in major depressive disorder. *Frontiers in Neurology*, 11, 272. doi:10.3389/fneur.2020.00272
- Lopresti, A. L., Hood, S. D., & Drummond, P. D. (2013). A review of lifestyle factors that contribute to important pathways associated with major depression: Diet, sleep and exercise. *Journal of Affective Disorders*, 148(1), 12–27. doi:10.1016/j.jad.2013.01.014i
- Luo, L., Chen, L., Wang, Y., Li, Q., He, N., Li, Y., ... Li, F. (2023a). Patterns of brain dynamic functional connectivity are linked with attention-deficit/hyperactivity disorder-related behavioral and cognitive dimensions. *Psychological Medicine*, 53(14), 1–12. doi:10.1017/S0033291723000089
- Luo, L., Li, Q., Wang, Y., He, N., Wang, Y., You, W., ... Li, F. (2023b). Shared and disorder-specific alterations of brain temporal dynamics in obsessive-compulsive disorder and schizophrenia. *Schizophrenia Bulletin*, 49(5), 1387–1398. doi:10.1093/schbul/sbad042
- Luo, L., Wu, H., Xu, J., Chen, F., Wu, F., Wang, C., & Wang, J. (2021). Abnormal large-scale resting-state functional networks in drug-free major depressive disorder. *Brain Imaging and Behavior*, 15(1), 96–106. doi:10.1007/s11682-019-00236-y
- Luo, L., You, W., DelBello, M. P., Gong, Q., & Li, F. (2022). Recent advances in psychoradiology. *Physics in Medicine and Biology*, 67(23). doi:10.1088/1361-6560/ac9d1e
- McCann, J. C., & Ames, B. N. (2008). Is there convincing biological or behavioral evidence linking vitamin D deficiency to brain dysfunction? *FASEB Journal: Official Publication of the Federation of American Societies for Experimental Biology*, 22(4), 982–1001. doi:10.1096/fj.07-9326rev
- Milaneschi, Y., Hoogendijk, W., Lips, P., Heijboer, A. C., Schoevers, R., van Hemert, A. M., ... Penninx, B. W. (2014). The association between low vitamin D and depressive disorders. *Molecular Psychiatry*, 19(4), 444–451. doi:10.1038/mp.2013.36
- Nikolaus, S., Hautzel, H., Heinz, A., & Müller, H. W. (2012). Key players in major and bipolar depression – A retrospective analysis of in vivo imaging studies. *Behavioural Brain Research*, 232(2), 358–390. doi:10.1016/j.bbr.2012.03.021
- Okereke, O. I., Reynolds, C. F. 3rd, Mischoulon, D., Chang, G., Vyas, C. M., Cook, N. R., ... Manson, J. E. (2020). Effect of long-term vitamin D3 supplementation vs placebo on risk of depression or clinically relevant depressive symptoms and on change in mood scores: A randomized clinical trial. *Jama*, 324(5), 471–480. doi:10.1001/jama.2020.10224
- Okereke, O. I., & Singh, A. (2016). The role of vitamin D in the prevention of late-life depression. *Journal of Affective Disorders*, 198, 1–14. doi:10.1016/j.jad.2016.03.022
- Oldfield, R. C. (1971). The assessment and analysis of handedness: The Edinburgh inventory. *Neuropsychologia*, 9(1), 97–113. doi:10.1016/0028-3932(71)90067-4
- Opie, R. S., Itsiopoulos, C., Parletta, N., Sanchez-Villegas, A., Akbaraly, T. N., Ruusunen, A., & Jacka, F. N. (2017). Dietary recommendations for the prevention of depression. *Nutritional Neuroscience*, 20(3), 161–171. doi:10.1179/1476830515Y.0000000043
- Parker, G. B., Brotchie, H., & Graham, R. K. (2017). Vitamin D and depression. *Journal of Affective Disorders*, 208, 56–61. doi:10.1016/j.jad.2016.08.082
- Patrick, R. P., & Ames, B. N. (2015). Vitamin D and the omega-3 fatty acids control serotonin synthesis and action, part 2: Relevance for ADHD, bipolar disorder, schizophrenia, and impulsive behavior. *FASEB Journal: Official Publication of the Federation of American Societies for Experimental Biology*, 29(6), 2207–2222. doi:10.1096/fj.14-268342
- Pike, J. W., Meyer, M. B., Martowicz, M. L., Bishop, K. A., Lee, S. M., Nerenz, R. D., & Goetsch, P. D. (2010). Emerging regulatory paradigms for control of gene expression by 1,25-dihydroxyvitamin D3. *The Journal of Steroid Biochemistry and Molecular Biology*, 121(1-2), 130–135. doi:10.1016/j.jsbmb.2010.02.036
- Ringe, J. D., & Kipshoven, C. (2012). Vitamin D-insufficiency: An estimate of the situation in Germany. *Dermato-endocrinology*, 4(1), 72–80. doi:10.4161/derm.19829
- Ryan, J. W., Anderson, P. H., & Morris, H. A. (2015). Pleiotropic activities of vitamin D receptors – adequate activation for multiple health outcomes. *The Clinical Biochemist. Reviews*, 36(2), 53–61.
- Saavedra, K., Molina-Marquez, A. M., Saavedra, N., Zambrano, T., & Salazar, L. A. (2016). Epigenetic modifications of major depressive disorder. *International Journal of Molecular Sciences*, 17(8), 1279. doi:10.3390/ijms17081279
- Sacchet, M. D., Ho, T. C., Connolly, C. G., Tymofiyeva, O., Lewinn, K. Z., Han, L. K., ... Yang, T. T. (2016). Large-scale hypoconnectivity between resting-state functional networks in unmedicated adolescent major depressive disorder. *Neuropsychopharmacology: Official Publication of the American*

- College of Neuropsychopharmacology, 41(12), 2951–2960. doi:10.1038/npp.2016.76
- Sarris, J., O'Neil, A., Coulson, C. E., Schweitzer, I., & Berk, M. (2014). Lifestyle medicine for depression. *BMC Psychiatry*, 14, 107. doi:10.1186/1471-244X-14-107
- Schlogl, M., & Holick, M. F. (2014). Vitamin D and neurocognitive function. *Clinical Interventions in Aging*, 9, 559–568. doi:10.2147/CIA.S51785
- Shen, Y., Wei, Y., Yang, X. N., Zhang, G., Du, X., Jia, Q., ... Zhang, X. Y. (2020). Psychotic symptoms in first-episode and drug naive patients with major depressive disorder: Prevalence and related clinical factors. *Depression and Anxiety*, 37(8), 793–800. doi:10.1002/da.23026
- Shirazi, H. A., Rasouli, J., Ciric, B., Rostami, A., & Zhang, G. X. (2015). 1,25-Dihydroxyvitamin D3 enhances neural stem cell proliferation and oligodendrocyte differentiation. *Experimental and Molecular Pathology*, 98(2), 240–245. doi:10.1016/j.yemp.2015.02.004
- Smith, S. M., Jenkinson, M., Johansen-Berg, H., Rueckert, D., Nichols, T. E., Mackay, C. E., ... Behrens, T. E. (2006). Tract-based spatial statistics: Voxelwise analysis of multi-subject diffusion data. *NeuroImage*, 31(4), 1487–1505. doi:10.1016/j.neuroimage.2006.02.024
- Sun, J., Kong, J., Duan, Y., Szeto, F. L., Liao, A., Madara, J. L., & Li, Y. C. (2006). Increased NF-kappaB activity in fibroblasts lacking the vitamin D receptor. *American Journal of Physiology. Endocrinology and Metabolism*, 291(2), E315–E322. doi:10.1152/ajpendo.00590.2005
- Thompson, E. (2015). Hamilton rating scale for anxiety (HAM-A). *Occupational Medicine (Lond)*, 65(7), 601. doi:10.1093/occmed/kqv054
- Tong, P., Bo, P., Shi, Y., Dong, L., Sun, T., Gao, X., & Yang, Y. (2021). Clinical traits of patients with major depressive disorder with comorbid borderline personality disorder based on propensity score matching. *Depression and Anxiety*, 38(1), 100–106. doi:10.1002/da.23122
- Wei, R., & Christakos, S. (2015). Mechanisms underlying the regulation of innate and adaptive immunity by vitamin D. *Nutrients*, 7(10), 8251–8260. doi:10.3390/nu7105392
- WHO (2017). *Depression and other common mental disorders: Global health estimates*. Geneva: World Health Organization.
- Williams, J. B. (1988). A structured interview guide for the Hamilton Depression Rating Scale. *Archives of General Psychiatry*, 45(8), 742–747. doi:10.1001/archpsyc.1988.01800320058007
- Winston, G. P. (2012). The physical and biological basis of quantitative parameters derived from diffusion MRI. *Quantitative Imaging in Medicine and Surgery*, 2(4), 254–265. doi:10.3978/j.issn.2223-4292.2012.12.05
- Wong, S. K., Chin, K. Y., & Ima-Nirwana, S. (2018). Vitamin D and depression: The evidence from an indirect clue to treatment strategy. *Current Drug Targets*, 19(8), 888–897. doi:10.2174/1389450118666170913161030
- Wu, X. J., Zeng, L. L., Shen, H., Yuan, L., Qin, J., Zhang, P., & Hu, D. (2017). Functional network connectivity alterations in schizophrenia and depression. *Psychiatry Res Neuroimaging*, 263, 113–120. doi:10.1016/j.pscychresns.2017.03.012
- Yan, C. G., Wang, X. D., Zuo, X. N., & Zang, Y. F. (2016). DPABI: Data processing & analysis for (Resting-State) brain imaging. *Neuroinformatics*, 14(3), 339–351. doi:10.1007/s12021-016-9299-4
- Yanai, K., & Tashiro, M. (2007). The physiological and pathophysiological roles of neuronal histamine: An insight from human positron emission tomography studies. *Pharmacology & Therapeutics*, 113(1), 1–15. doi:10.1016/j.pharmthera.2006.06.008
- Yang, Y., Zhu, D. M., Zhang, C., Zhang, Y., Wang, C., Zhang, B., ... Yu, Y. (2020). Brain structural and functional alterations specific to low sleep efficiency in major depressive disorder. *Frontiers in Neuroscience*, 14, 50. doi:10.3389/fnins.2020.00050
- Yin, Y., He, X., Xu, M., Hou, Z., Song, X., Sui, Y., ... Yuan, Y. (2016). Structural and functional connectivity of default mode network underlying the cognitive impairment in late-onset depression. *Scientific Reports*, 6, 37617. doi:10.1038/srep37617
- You, W., Luo, L., Yao, L., Zhao, Y., Li, Q., Wang, Y., ... Li, F. (2022). Impaired dynamic functional brain properties and their relationship to symptoms in never treated first-episode patients with schizophrenia. *Schizophrenia (Heidelberg)*, 8(1), 90. doi:10.1038/s41537-022-00299-9
- Yu, M., Linn, K. A., Shinohara, R. T., Oathes, D. J., Cook, P. A., Duprat, R., ... Sheline, Y. I. (2019). Childhood trauma history is linked to abnormal brain connectivity in major depression. *Proceedings of the National Academy of Sciences of the United States of America*, 116(17), 8582–8590. doi:10.1073/pnas.1900801116
- Zhang, C., Yang, Y., Zhu, D. M., Zhao, W., Zhang, Y., Zhang, B., ... Yu, Y. (2020). Neural correlates of the association between depression and high density lipoprotein cholesterol change. *Journal of Psychiatric Research*, 130, 9–18. doi:10.1016/j.jpsychires.2020.07.012
- Zhao, W., Zhu, D. M., Li, Q., Xu, X., Zhang, Y., Zhang, C., ... Yu, Y. (2023). Brain function mediates the association between low vitamin D and neurocognitive status in female patients with major depressive disorder. *Psychological Medicine*, 53(9), 4032–4045. doi:10.1017/S0033291722000708
- Zhao, W., Zhu, D. M., Li, S., Cui, S., Jiang, P., Wang, R., ... Yu, Y. (2022). The reduction of vitamin D in females with major depressive disorder is associated with worse cognition mediated by abnormal brain functional connectivity. *Progress in Neuro-Psychopharmacology & Biological Psychiatry*, 118, 110577. doi:10.1016/j.pnpbp.2022.110577
- Zheng, Y. P., Zhao, J. P., Phillips, M., Liu, J. B., Cai, M. F., Sun, S. Q., & Huang, M. F. (1988). Validity and reliability of the Chinese Hamilton depression rating scale. *The British Journal of Psychiatry: the Journal of Mental Science*, 152, 660–664. doi:10.1192/bjp.152.5.660
- Zhong, X., Shi, H., Ming, Q., Dong, D., Zhang, X., Zeng, L. L., & Yao, S. (2017). Whole-brain resting-state functional connectivity identified major depressive disorder: A multivariate pattern analysis in two independent samples. *Journal of Affective Disorders*, 218, 346–352. doi:10.1016/j.jad.2017.04.040
- Zhu, D. M., Zhao, W., Cui, S., Jiang, P., Zhang, Y., Zhang, C., ... Yu, Y. (2022). The relationship between vitamin D, clinical manifestations, and functional network connectivity in female patients with major depressive disorder. *Frontiers in Aging Neuroscience*, 14, 817607. doi:10.3389/fnagi.2022.817607
- Zhu, D.-m., Zhao, W., Zhang, B., Zhang, Y., Yang, Y., Zhang, C., ... Yu, Y. (2019). The relationship between serum concentration of vitamin D, total intracranial volume, and severity of depressive symptoms in patients with major depressive disorder. *Frontiers in Psychiatry*, 10, 322. doi:10.3389/fpsy.2019.00322
- Zhu, X., Yuan, F., Zhou, G., Nie, J., Wang, D., Hu, P., ... Liao, W. (2021). Cross-network interaction for diagnosis of major depressive disorder based on resting state functional connectivity. *Brain Imaging and Behavior*, 15(3), 1279–1289. doi:10.1007/s11682-020-00326-2