

BJPsych

Contents

- A17 Editorial Board
A19 Highlights of this issue

Editorial

- 337 **Carving bipolarity using a lithium sword**
G. S. Malhi and J. R. Geddes

- 339 **Out-patient institutionalisation – in 100 words**
Nicholas Kontos, Oliver Freudenreich and John Querques

Review articles

- 340 **Low birth weight, preterm birth and small for gestational age association with adult depression: systematic review and meta-analysis**

C. Loret de Mola, G. V. Araújo de França, L. A. Quevedo and B. L. Horta

- 348 **Height in relation to dementia death: individual participant meta-analysis of 18 UK prospective cohort studies**

T. C. Russ, M. Kivimäki, J. M. Starr, E. Stamatakis and G. D. Batty

Papers

- 355 **Fetal growth and psychiatric and socioeconomic problems: population-based sibling comparison**

Q. A. Class, M. E. Rickert, H. Larsson, P. Lichtenstein and B. M. D'Onofrio

- 362 **Functional impairment in adolescents and young adults with emerging mood disorders**

J. Scott, E. M. Scott, D. F. Hermens, S. L. Naismith, A. J. Guastella, D. White, B. Whitwell, J. Lagopoulos and I. B. Hickie

- 369 **Hippocampal abnormalities and age in chronic schizophrenia: morphometric study across the adult lifespan**

N. Pujol, R. Penadés, C. Junqué, I. Dinov, C. H. Y. Fu, R. Catalán, N. Ibarretxe-Bilbao, N. Bargalló, M. Bernardo, A. Toga, R. J. Howard and S. G. Costafreda

- 375 **C. W. Beers, *A Mind That Found Itself* – reflection**
Pippa Jones

- 376 **Default mode network subsystem alterations in obsessive-compulsive disorder**

J. C. Beucke, J. Sepulcre, M. C. Eldaief, M. Sebold, N. Kathmann and C. Kaufmann

- 382 **Asylum – no more – poems by doctors**
Reg Parton

- 383 **Trauma, post-traumatic stress disorder and psychiatric disorders in a middle-income setting: prevalence and comorbidity**

S. Dorrington, H. Zavos, H. Ball, P. McGuffin, F. Rijdsdijk, S. Siribaddana, A. Sumathipala and M. Hotopf

- 389 **The crooked wisdom of Francis Bacon's *Essays* – reflection**
Alistair Stewart

- 390 **Assessing outcomes for cost-utility analysis in depression: comparison of five multi-attribute utility instruments with two depression-specific outcome measures**

C. Mihalopoulos, G. Chen, A. Iezzi, M. A. Khan and J. Richardson

- 398 **Determinants of completed railway suicides by psychiatric in-patients: case-control study**

K. Lukasczek, J. Baumert, M. Krawitz, N. Erazo, H. Förstl and K.-H. Ladwig

Short report

- 407 **Misuse of benzodiazepines and Z-drugs in the UK**

V. Kapil, J. L. Green, C. Le Lait, D. M. Wood and P. I. Dargan

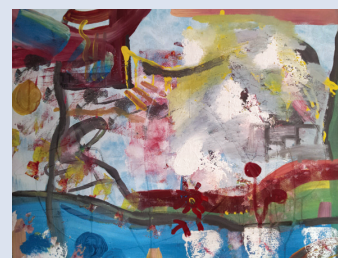
Columns

- 409 Correspondence
412 Corrections
413 Book reviews
417 Contents of *Advances in Psychiatric Treatment*
418 Contents of the *American Journal of Psychiatry*
419 Kaleidoscope
421 From the Editor's desk

Cover picture

Sayda Abdul Rashid (b. 1979).
Sunshine Merridale (2012)

I paint abstract and contemporary art. I am very spiritual and have a strong faith in God. I was given a diagnosis of bipolar disorder following a breakdown I had in Poland during April 1997. Ever since this episode I have painted pictures relating to my spiritual experiences. My paintings are personal and very much like a diary. My paintings always tell a story. This painting illustrates the theme of happiness and hope. The colours evoke a bright mood. There is a lady sitting on the left side of the picture. Once she was miserable, but she has now found happiness in 'Merridale'. She is at peace and the doors of her life have opened into a new beginning. The flower pots symbolise identity and personal growth.



We are always looking for interesting and visually appealing images for the cover of the *Journal* and would welcome suggestions or pictures, which should be sent to Dr Allan Beveridge, British Journal of Psychiatry, 21 Prescot Street, London E1 8BB, UK or bjp@rcpsych.ac.uk.