

# The JOURNAL of THE INSTITUTE OF NAVIGATION

---

VOL. VIII, NO. 3

JULY

1955

<b>The Use of Bisectors to find the Most Probable Position</b>	195
M. BINI	
<b>The Petula Transatlantic Expedition</b>	205
FRANK EVANS	
<b>The Time-Distance Radar Plot</b>	211
R. D'E. ATKINSON	
<b>An American Collection of Source Books for the History of Navigation</b>	219
E. G. R. TAYLOR	
<b>Some Problems in Space Travel</b>	224
J. G. PORTER	
<b>The Polar Flight of Aries IV</b>	236
D. BOWER	
<b>The Stranding of the Revenge in 1579</b>	247
G. P. B. NAISH	
<b>Wind Derivation from Vertical Photographs</b>	250
G. W. HURST	
<b>The Comet III Paper Operations</b>	256
E. W. PIKE	
<b>Airfield Surface Movement Indication</b>	258
R. F. HANSFORD	
<b>Collision at Sea</b>	261
J. M. SHARPEY-SCHAPER	
<b>FORUM</b>	
The Value of Meteorological Forecasts for Airline Operation	281
Alexander Neckham and the Pivoted Compass Needle	283
Early Pole Star Tables	285
<b>Reviews</b>	289

---

THE INSTITUTE OF NAVIGATION  
AT THE ROYAL GEOGRAPHICAL SOCIETY  
1 KENSINGTON GORE LONDON SW7

---

JOHN MURRAY (PUBLISHERS) LTD., 50 ALBEMARLE STREET LONDON W1

---

PRICE SEVEN SHILLINGS AND SIXPENCE

## THE INSTITUTE OF NAVIGATION

*Patron*

H.R.H. THE DUKE OF EDINBURGH, K.G.

*OFFICERS AND COUNCIL*

*President*

D. H. Sadler, O.B.E.

*Vice-Presidents*

Air Chief Marshal the Hon. Sir Ralph Cochrane, G.B.E., K.C.B., A.F.C.

Captain F. J. Wylie, R.N.(ret.)

*Hon. Treasurer:* Captain J. D. F. Elvish, O.B.E.

*Chairman of the Technical Committee*

Wing Commander E. W. Anderson, O.B.E., D.F.C., A.F.C.

*Chairman of the Executive Committee:* Captain G. C. Saul

*Other Members of the Council*

Dr. R. d'E. Atkinson

Mr. D. O. Fraser

Squadron Leader D. Bower, M.B.E.

Mr. W. L. S. Harrison

Vice-Admiral Sir Archibald Day, K.B.E., C.B., D.S.O.

Dr. G. F. R. Deacon, C.B.E., F.R.S.

Captain (E) J. H. Illingworth, R.N.

Group Captain E. Fennessy, O.B.E.

Mr. J. B. Parker

The directors of navigation at the Admiralty, the Air Ministry and the Ministry of Transport and Civil Aviation are invited to attend meetings of the Council as *ex-officio* members.

*Executive Secretary:* M. W. Richey. *Assistant Secretary:* Miss L. M. A. Tower

## The Journal of the Institute of Navigation

*THE Journal* is published quarterly by the Institute and is edited by the Executive Secretary. It contains original papers contributing to the science of navigation, including those presented at meetings of the Institute together with the ensuing discussion. In addition the *Journal* includes a record of current navigational work, reviews of important books, and other matters of concern to those interested in navigation.

The *Journal* is free to all members of the Institute. It is sold to the public at seven shillings and sixpence per copy or, by subscription, at thirty-one shillings per annum (post free) and may be obtained through all booksellers and John Murray (Publishers) Ltd., 50 Albemarle Street, London W1. American subscriptions through Transatlantic Arts Inc., Hollywood-by-the-Sea, Florida, at \$1.50 per copy or \$6 per annum (post free).

Contributions, which are welcomed from both members and non-members, should be addressed to the Editor.

Enquiries for advertising space should be addressed to the Advertising Manager.

The postal address of the Institute is:

The Institute of Navigation,  
at The Royal Geographical Society,  
1 Kensington Gore, London SW7.

Telephone: Kensington 5021.

**“The security  
of such as pass  
on the seas  
upon their  
lawful occasions”**

The modern mariner is protected alike “from the dangers of the sea and the violence of the enemy” with the aid of Marconi equipment.

The seamanlike way in which the Marconi Company has developed electronics has provided the seafarer with reliable shipborne radio-telegraph and radio-telephone equipment, accurate radar and radio-direction finding gear and trustworthy echometer sounding devices.

When he approaches the coast around the British Isles, and in many other seaways of the world, Marconi beacons in lightships, lighthouses and other seamarks provide him with precise data for ‘fixing’.

The harbour authorities, pilot vessels and auxiliary craft which serve him are more efficient because of the Marconi installations they operate. So, also, are the Naval and Naval Air Forces which defend him.



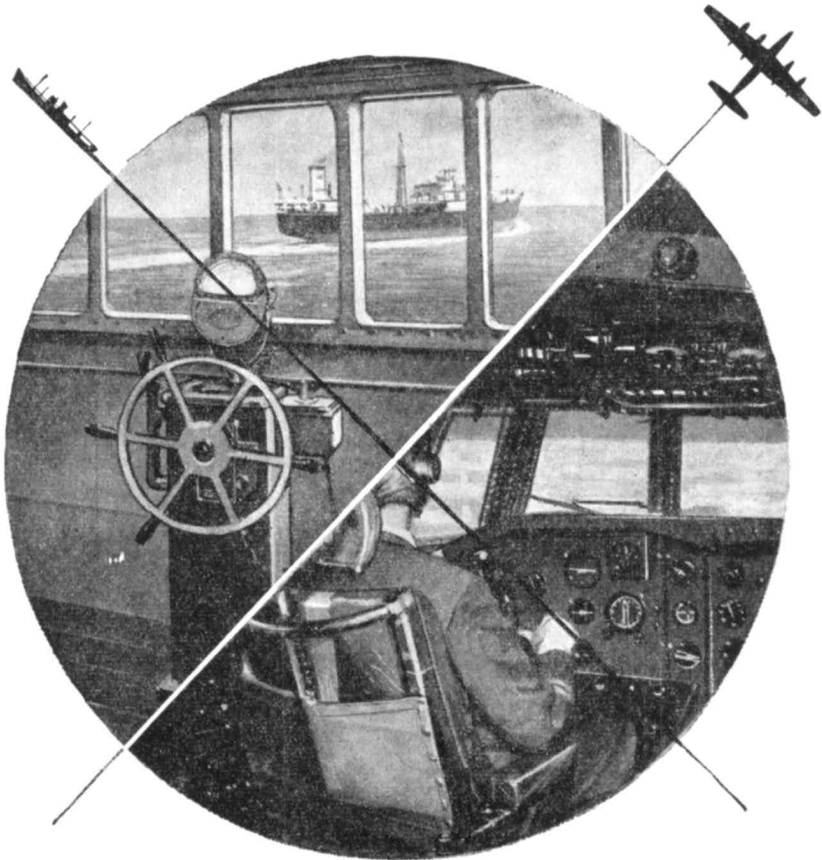
**Lifeline of communication**

**MARCONI**

**MARINE RADAR AND COMMUNICATIONS**

**MARCONI'S WIRELESS TELEGRAPH COMPANY LIMITED, CHELMSFORD, ESSEX  
LN 1**

# Navigation by SPERRY

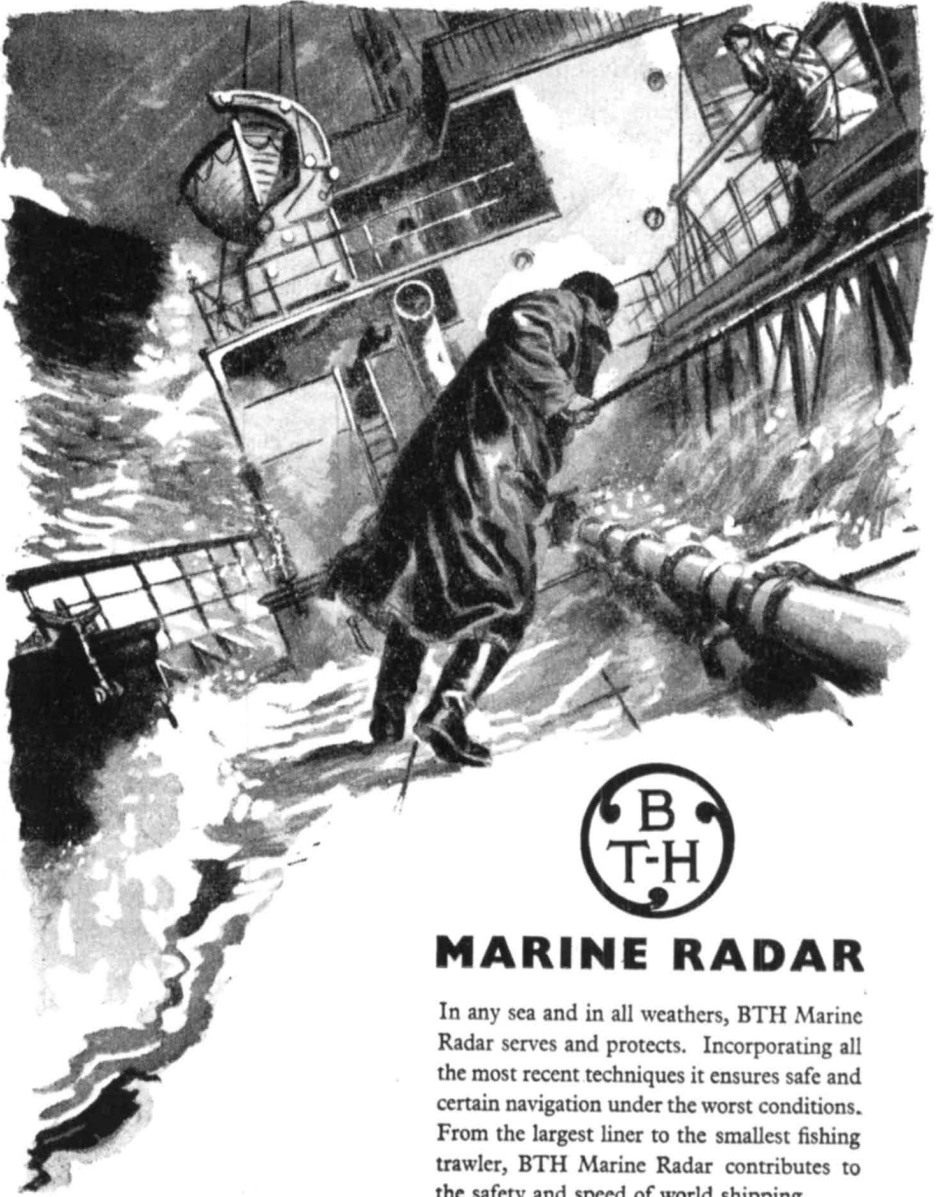


*by Sea - - - - or Air*

Sperry equipment facilitates accurate navigation along the ocean and air routes of the world, making a notable contribution to efficient operation.

**SPERRY** *Marine and Aeronautical  
Compasses and Navigational Equipment*

THE SPERRY GYROSCOPE CO LTD. GREAT WEST RD., BRENTFORD, MIDDX.



## MARINE RADAR

In any sea and in all weathers, BTH Marine Radar serves and protects. Incorporating all the most recent techniques it ensures safe and certain navigation under the worst conditions. From the largest liner to the smallest fishing trawler, BTH Marine Radar contributes to the safety and speed of world shipping.

**THE BRITISH THOMSON-HOUSTON**

**COMPANY LIMITED . RUGBY . ENGLAND**

*Member of the AEI group of companies*

A4885

# DIFFERENT SHIPS— DIFFERENT LONG SPLICES

— but only one 'Navigators Insurance'

The obvious and appropriate Company for the insurance of the property and liabilities of all professional and amateur NAVIGATORS.

Founded in 1921 under the chairmanship of the late Admiral Sir John Franklin Parry, K.C.B., The Navigators and General specialise in the Insurance requirements of all who are or were connected with the sea. We have added interest in their insurance problems in that the majority of our executive staff served, at one time, in the Royal Navy or Royal Merchant Navy. We offer impeccable security and are renowned for prompt and generous settlement of claims.

*Classes of business transacted include:*

Fire, Accident, Marine	Yachts and Motor Boats
Personal Effects (Ashore, Afloat and Airborne)	Pilot's Public Liability
Navigators' Indemnity (Sea and Air)	Aircraft (Hull and Cargo)

*Consult your Broker or write for particulars :*

## THE NAVIGATORS AND GENERAL

INSURANCE COMPANY LIMITED

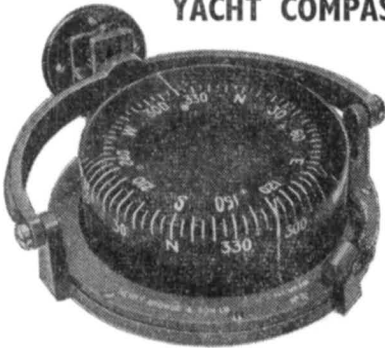
15/16 CULLUM STREET, LIME STREET, LONDON, E.C.3

Telephone: MANsion 2121

Telegrams: Avigatinsu Fen London

N.32

### The **Sestrel-MOORE** YACHT COMPASS



*A Revolutionary Advance in Yacht Compass Design*

Clear perspex bowl. Compass card can be read in the vertical position as well as from above. "Circum" single ring magnet gives extreme steadiness in heavy weather. Design allows compass to be mounted on eye level and magnified card image is clearly visible up to ten feet. Two patterns of bracket fitting are available, the pillar pattern "A" for fitting to the coach roof or the bulkhead pattern "B."

(Specify type when ordering). Price **£27.0.0**  
"Sestrel" Bearing Sight for use with Sestrel-Moore Compass. £3 15s.

### HENRY BROWNE & SON, LTD.

Sales Dept. & Service Depot:

71 LEADENHALL STREET, LONDON, E.C.3

Telephones: Sales-AVENue 6060. Service-AVENue 2156

Head Office: **BARKING, ESSEX**

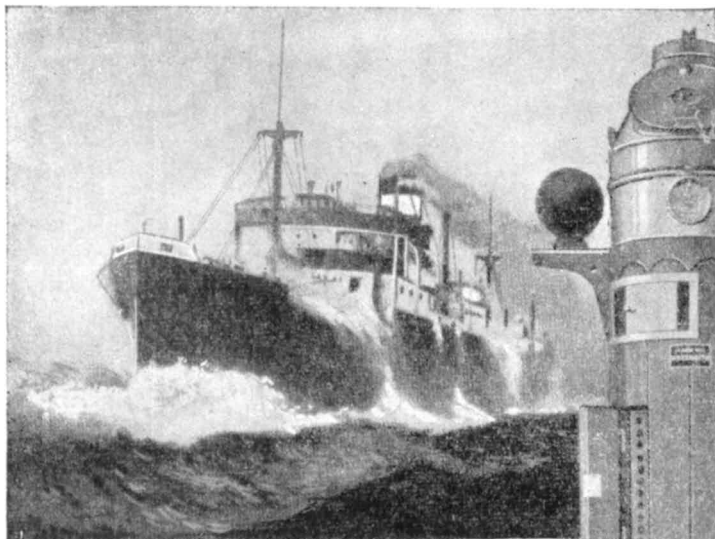
## Bird Navigation

G. V. T. MATTHEWS

A Manx Shearwater carried from its nest in Skokholm to Boston U.S.A., and then released was back at its nest twelve and a half days later. How did it find its way? Dr Matthews brings several years research to bear on the problem of bird navigation in this Cambridge Monograph in Experimental Biology.

12s. 6d. net

CAMBRIDGE  
UNIVERSITY PRESS



# **FULL SPEED AHEAD!**

WITH



## **NAVIGATIONAL INSTRUMENTS**

The "HEZZANITH" Patent MARK VII  
**PROJECTOR BINNACLE  
 AND COMPASS**

*By means of a series of optical elements an enlarged erect image of a portion of the card covering an arc of 40° in length is produced on a ground glass screen which is viewed in an adjustable plane mirror.*

*All stray light is effectively screened, and there is a completely unobstructed view of the card from above, permitting the normal use of an azimuth instrument by day or night.*

*Send for our special Projector Binnacle  
 Leaflet (Nj.55).*



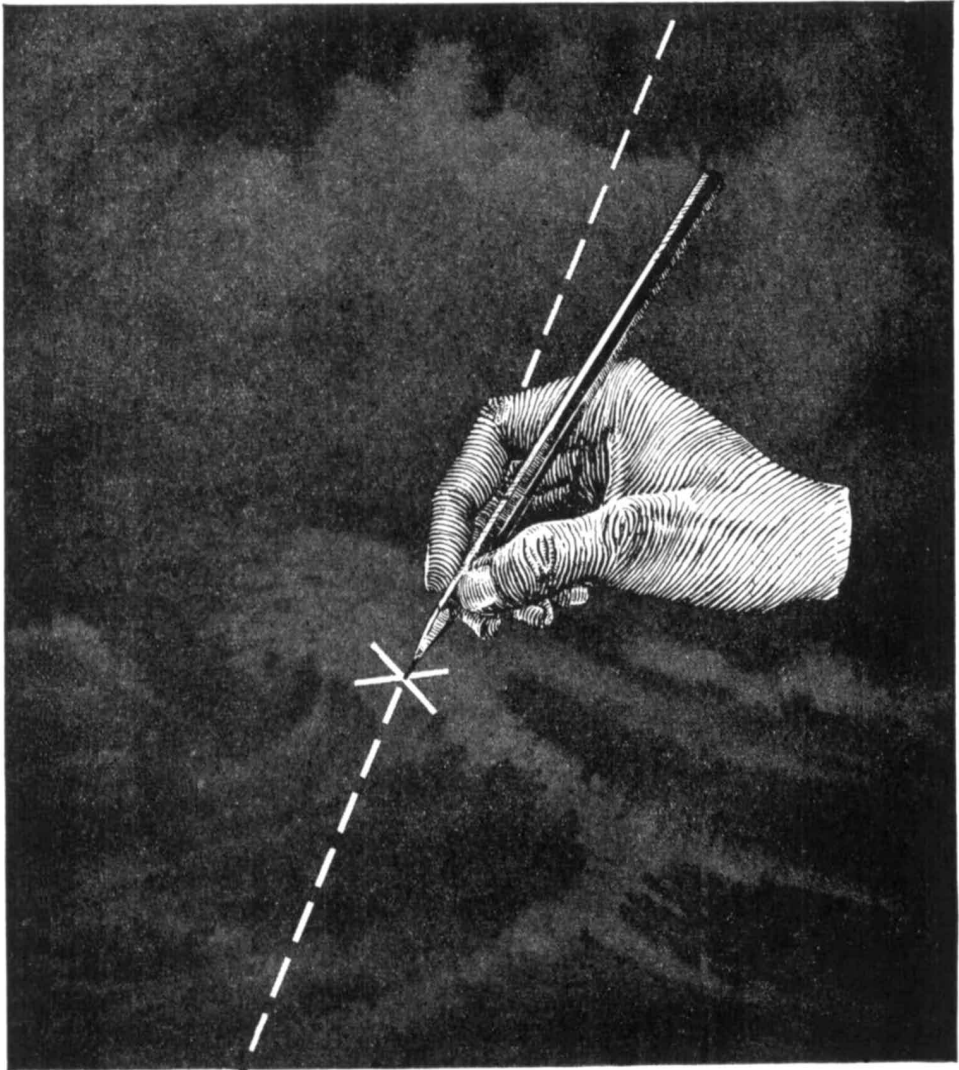
# **HEATH & COMPANY**

(Incorporated with W. F. Stanley & Co. Ltd.)

**NEW ELTHAM - LONDON, S.E.9**

Phone : ELTHAM 3836

Cables : "Polaris, Souphone, London"



Night and day, however thick  
the weather, regardless alike of wind  
or tidal currents, your precise  
position is known with

## ***The Decca Navigator***

THE DECCA NAVIGATOR COMPANY LIMITED, 1-3 BRIXTON ROAD, LONDON, S.W.9



THE  
MATHEMATICAL PRACTITIONERS  
OF TUDOR AND STUART  
ENGLAND

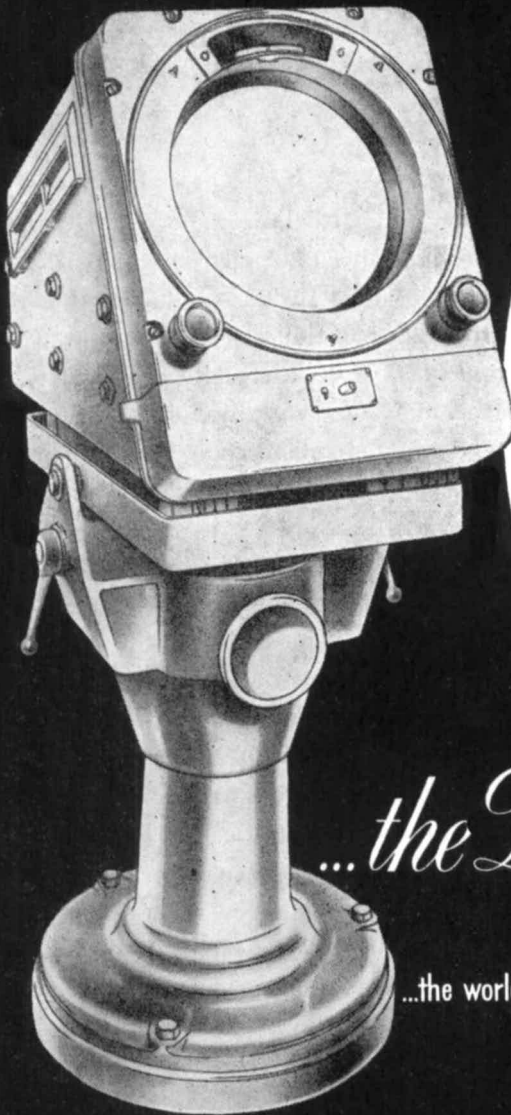
by E. G. R. Taylor

THIS book is a chronicle of men behind the scenes—teachers, text-book writers, technicians, craftsmen and the like—but for whom great scientists would always remain sterile in their generation. The mathematical practitioners, as they styled themselves, instructed and trained the navigators and hydrographers, the land surveyors and engineers whose work was for the first time based on geometry and trigonometry, and their history forms an important part of the history of navigation. In his Foreword to the book, the Astronomer Royal writes :

‘Professor Taylor has given a fascinating account of these mathematical practitioners and of the development of ideas, methods and instruments from Tudor times to early in the eighteenth century, which forms a valuable contribution to a little-known epoch in the history of navigation and surveying. The second part of the work contains a list of the practitioners, with biographical notes and details of their work. The third part consists of a list of the more important works on the mathematical arts and practices. These biographical and bibliographical notes will be invaluable for reference purposes. This volume embodies a vast amount of historical research, and it is fitting that its publication should be sponsored by the Institute of Navigation, whose objects include the encouragement of research and the promotion of knowledge in navigation and its associated sciences.’

CAMBRIDGE UNIVERSITY PRESS  
FOR THE  
INSTITUTE OF NAVIGATION

Demy 8vo. 442 pages, illustrated. Price 55s. net (45s. to Members)



Decca Marine Radar, since its inception five and a half years ago, has established new world standards and set the pattern of marine radar design.

The Decca 45 is acclaimed as the most outstanding merchant marine radar available today . . . it stands in a class by itself for quality, performance and reliability.

*...the Decca 45*

*...the world's outstanding marine radar*

DECCA RADAR LIMITED · LONDON · ENGLAND

DR 379

# FLAT TUBES

## SAVE SPACE



**DG 16-21**  
FOR 'A' SCAN RADAR  
AND INSTRUMENT  
APPLICATIONS

The screen of the DG16-21 cathode ray tube is a rectangle measuring  $5\frac{1}{2} \times 1\frac{1}{2}$  inches—the logical shape for radar 'A' scan and many instrument applications. A number of these tubes can be stacked vertically to provide multiple displays within a confined space . . . they are the answer to those problems in design where circular tubes make equipments excessively bulky.

 easily stacked  
for multiple trace  
comparison

Deflection : Electrostatic, symmetric or asymmetric $V_h$ : 6.3 volts. $I_h$ : 0.3 amp. Base : B14A.	TYPICAL OPERATING CONDITIONS					
	$V_{a3}$	$V_{a2}$	$V_{a1}$	$V_g$	Deflection Sensitivity	
					$S_x$	$S_y$
5,000V	600 to 700V	1,800V	-25 to -70V	0.19mm/V	0.21mm/V	

*The DG 16-21 has a green luminescent medium persistence screen. Versions with other screens are contemplated and your comments are invited.*

See Mullard Cathode Ray Tubes and Valves on  
**STAND No. 23 – BLOCK F**  
 BRITISH INSTRUMENT INDUSTRIES EXHIBITION  
 Earls Court, 28th June to 9th July



# Mullard

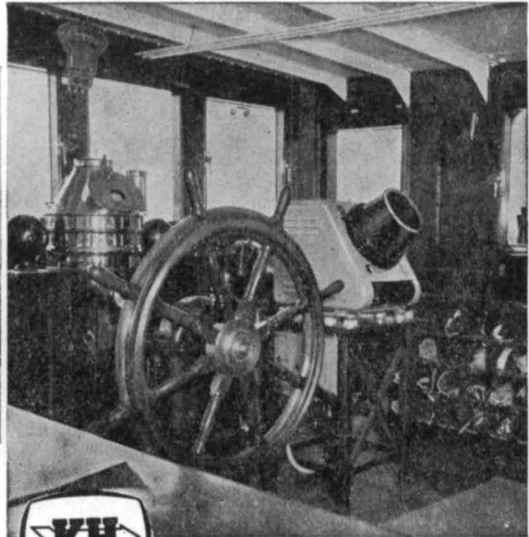


MULLARD LTD., COMMUNICATIONS & INDUSTRIAL VALVE DEPT.,  
 CENTURY HOUSE, SHAFTESBURY AVENUE, LONDON, W.C.2

MVT 173B I.I.E/B



The Display unit of "PATHFINDER'S" Kelvin Hughes Radar set is conveniently placed beside the steering position in the roomy wheelhouse. This Type 2C unit features a 12 in. screen and has scale ranges from 1-50 miles. The Kelvin Hughes Liquid Steering Compass can also be seen.



## NAVIGATIONAL EQUIPMENT

### *Showing the way for "Pathfinder"*

The navigational accuracy of the new Trinity House Pilot Vessel "PATHFINDER" is aided by Kelvin Hughes instruments—like so many of the vessels that are served by the pilots. The equipment specified by the Pilotage Department of Trinity House includes Kelvin Hughes Type 2C Radar, Navigational Echo Sounder, Liquid Steering Compass, and auxiliary equipment including chart instruments, barometers and clocks.

"PATHFINDER" is a twin screw diesel-powered vessel with a gross tonnage of 677 tons and an overall length of 175 feet. Built by Messrs. Philip & Son Ltd. of Dartmouth, she provides accommodation for 22 pilots. Based on Dover and stationed at Sunk and Dungeness "PATHFINDER" will supply pilots to ships bound for the Thames and Medway.

## KELVIN HUGHES

THE TWO GREATEST NAMES IN NAVIGATION

**KELVIN & HUGHES (MARINE) LIMITED, 99 FENCHURCH STREET, LONDON, E.C.3**

KHM60A