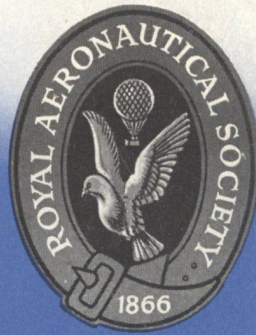


John Williams
R.P.L.

The Journal of
THE ROYAL
AERONAUTICAL
SOCIETY

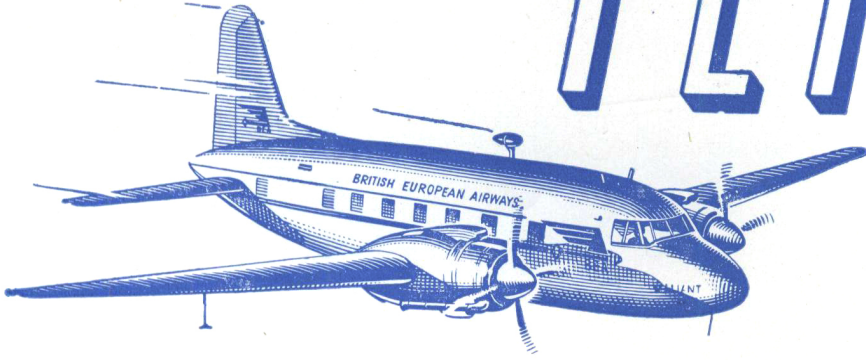


JULY 1947

NO 439

VOL. 51

FLY



FASTER BY VIKING!

LONDON TO	FLYING TIME
Amsterdam	1 hr 20 mins
Athens	9 hrs 5 mins
Brussels	1 hr 20 mins
Copenhagen	3 hrs 20 mins
Geneva	2 hrs 35 mins
Gibraltar	6 hrs 25 mins
Lisbon	6 hrs 15 mins
Madrid	4 hrs 35 mins
Oslo	4 hrs 15 mins
Prague	3 hrs 30 mins
Rome	5 hrs 30 mins
Stockholm	4 hrs 55 mins

These services are operated by Vickers Vikings

THE KEY TO EUROPE

BEA



BRITISH EUROPEAN AIRWAYS

Reservations and enquiries through principal travel agents and at Airways Terminal SW1 Telephone Victoria 2323
Headquarters Northolt Middlesex

The Fairey FIREFLY—long the standard two-seat reconnaissance fighter in the Royal Navy—is now in service with the Royal Canadian Navy and the Royal Netherlands Navy. Thus, *three of the World's Navies* are now equipped with this famous aircraft.



★
*The FIREFLY MARK IV
is officially cleared
for flying in all temperatures
from Poles to Equator.*

FAIREY AVIATION



THE FAIREY AVIATION COMPANY LIMITED, HAYES, MIDDLESEX

GEE

SHOWS YOU WHERE YOU ARE

GEE

The Pulse System of Hyperbolic Navigation

DAY AND NIGHT RANGE of 300 miles at 5,000 feet and 150 miles at 2,100 feet.

ACCURACY of 100 yards or $\frac{1}{2}\%$ of Range whichever is the greater.

OPERATION TIME of 10 seconds per fix.

IMMEDIATELY operative within service range of any chain of GEE ground stations.

UNAFFECTED by static interference.

CONTINUITY unaffected by service interruptions.

NOT SUSCEPTIBLE to jamming.
NO AMBIGUITIES.

GEE airborne and ground equipment developed, engineered and **FIRST PRODUCED** by

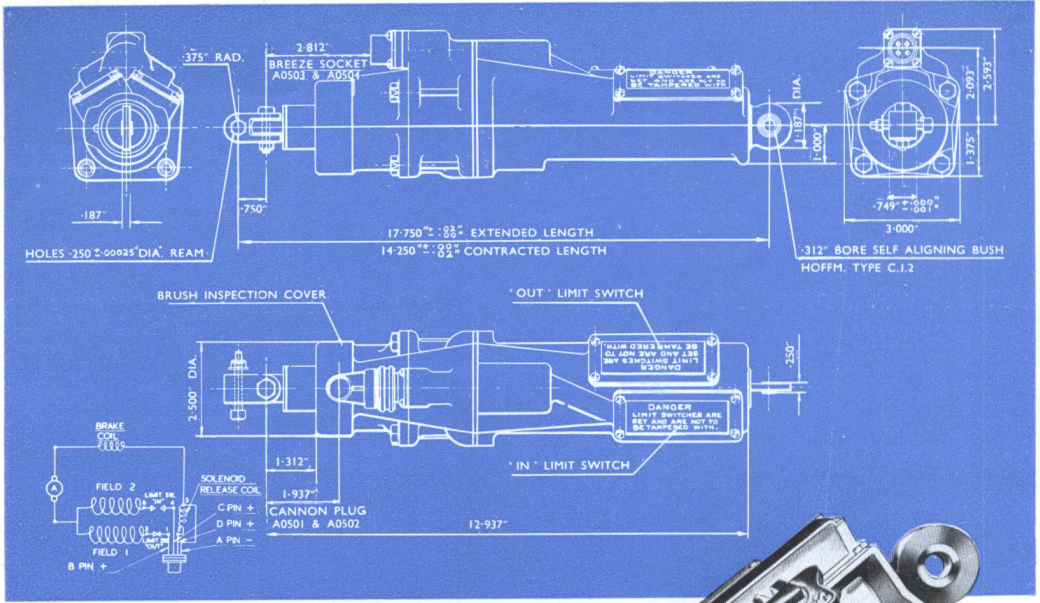


FIRST IN THE WORLD WITH RADAR RECEIVERS

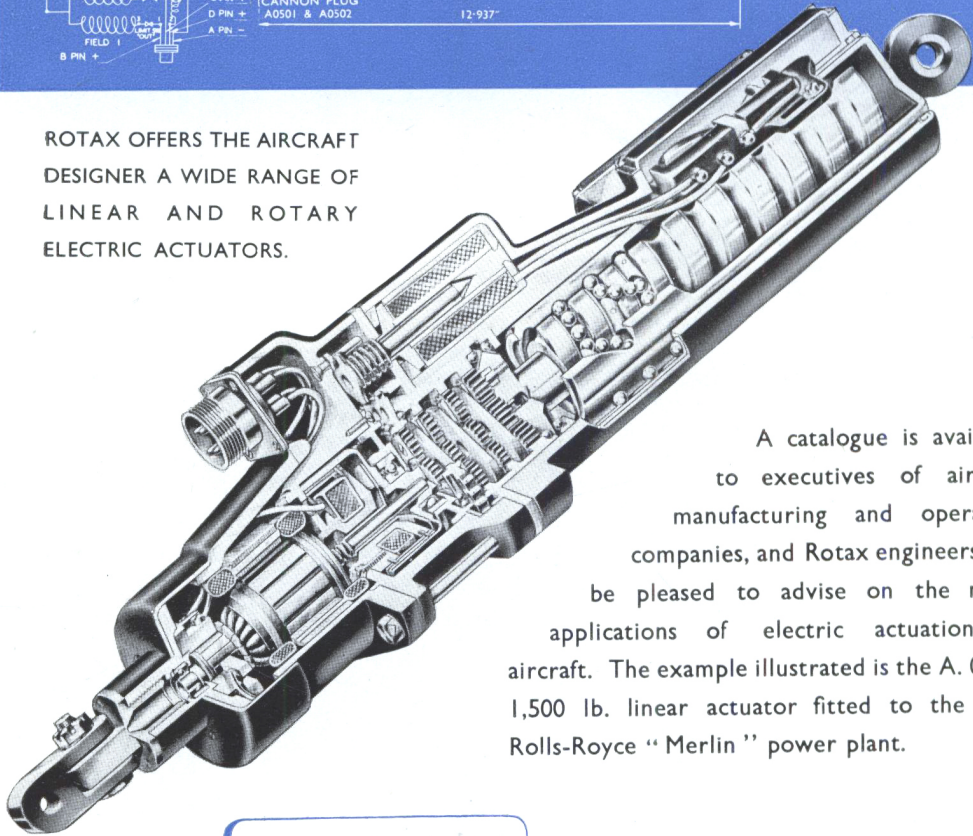
AVIATION RADAR

In the field of aviation we have made very considerable progress. "GEE," famous to many of you, briefly is a pulse system of navigation developed early in the war in collaboration with H.M. Government's Telecommunications Research Establishment. It was "GEE" that made the thousand-bomber raids on Germany possible. It was developed and manufactured exclusively by us for almost two years during the war. Networks of "GEE" stations already exist, covering most of the United Kingdom and a large part of Europe, and our Government have recently announced their intention of making available to those liberated countries requiring it complete ground installations, as well as a limited number of airborne installations with surplus stocks, thus providing them with temporary navigation facilities. The British European Airways, after thoroughly examining all competitive navigational aids, recently announced their decision to adopt "GEE." They are planning its introduction into all of their aircraft, in order that their equipment may be brought up to the only known proven system readily available for safe modern operation.

Extract from an address made by Mr. T. A. Macauley, Chairman of A. C. Gossor Ltd., on 14th August, 1946, at the company's 8th General Meeting.



ROTAX OFFERS THE AIRCRAFT DESIGNER A WIDE RANGE OF LINEAR AND ROTARY ELECTRIC ACTUATORS.

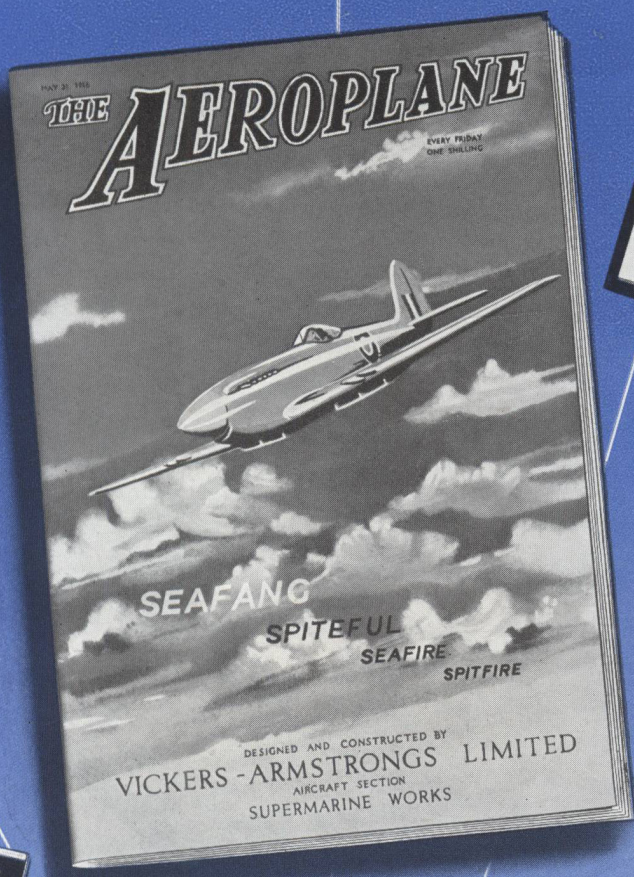


A catalogue is available to executives of aircraft manufacturing and operating companies, and Rotax engineers will be pleased to advise on the many applications of electric actuation in aircraft. The example illustrated is the A. 0501, 1,500 lb. linear actuator fitted to the civil Rolls-Royce "Merlin" power plant.

ROTAX

Aircraft Electrical Systems

ROTAX LIMITED · LONDON · N.W.10 · ENGLAND



Exact information, responsible commentaries and topical illustrations are among the features which have given these four representative Temple Press Publications positions of authority in the world of aviation.

TEMPLE PRESS LIMITED

BOWLING GREEN LANE, LONDON, E.C.1. TERMINUS 3636



PRECISION CASTING

An American Authority recently stated:

'Precision investment casting is a comparatively undeveloped industrial art, but it has reached the stage where it is reducing costs and improving qualities on tens of thousands of products. It is capable of accuracies roughly approximate to those of grinding. It can handle practically any metal that can be cast at all. The process makes its most valuable contributions by producing intricacies in parts, and by handling with ease metals that are difficult or even impossible to fabricate economically by other methods.'

MATERIALS AND METHODS, *March 1946*

*If that extract interests you, we welcome an opportunity
to supply some details of the part played by
Ethyl Silicate in precision casting*

ALBRIGHT & WILSON



ETHYL SILICATE

Albright & Wilson Ltd., 49 Park Lane, W.1 Tel: Gro 1311

TBW

8/21



**WORLD
WIDE
AUTHORITIES**

**COVERING EVERY
PHASE OF DESIGN,
OPERATION AND
PRODUCTION OF ALL
TYPES OF AIRCRAFT**

FLIGHT (weekly) provides the most authentic information on world aeronautical affairs. It covers every aspect of development and progress in aircraft and power unit design and operation. AIRCRAFT PRODUCTION (monthly) is the journal of the aircraft manufacturing industry, specialising in tools and works production processes. Both journals serve the interests of all concerned with the future progress of British aviation. Technical information is supplemented by brilliant functional drawings. Circulation is world wide. Annual subscriptions (Home and Overseas): FLIGHT, £3 1s. od.; AIRCRAFT PRODUCTION, £1 14s. 6d. Published in conjunction with these journals, FLIGHT HANDBOOK (212 pages, 7s. 6d. net) is essentially a manual for the student, whilst GAS TURBINES AND JET PROPULSION (272 pages, 12s. 6d. net) by G. Geoffrey Smith, has been widely adopted as the standard text on the subject.



ASSOCIATED
ILIFFE
PUBLICATIONS

DORSET HOUSE, STAMFORD STREET, LONDON, S.E.1. WATERLOO 3333 (50 LINES)

★ VIKING ★



chosen for the King's Flight

Vickers-Armstrongs' long experience in aircraft design and construction makes the Viking the safest and most efficient aircraft of its type in operation. That is why four Vikings were chosen to form the King's Flight, and used by Their Majesties the King and Queen and the Princesses during their South African tour. The Vickers Viking has also been chosen by British European Airways and other leading airlines.



REAR SALOON OF KING'S FLIGHT VIKING V.L. 246

Vickers-Armstrongs



Limited AIRCRAFT SECTION,

VICKERS HOUSE, BROADWAY, LONDON, S.W.1

A.T.17

SHIPBUILDERS ★ ENGINEERS ★ AIRCRAFT CONSTRUCTORS



In Empire Air Development

FIRST Aerial Service in Eastern Australia Charleville to Cloncurry. Hence 'Queensland and Northern Territory Aerial Services' Q.A.N.T.A.S. **1922**

FIRST Aircraft to be manufactured in Australia under licence from overseas . . . a DH50A, built by Qantas at Longreach **1926**

FIRST Flying Doctor service established in Australia by Qantas at Cloncurry **1928**

FIRST Official experimental Airmail between Australia and Britain, in association with Imperial Airways **1931**

FIRST Four-engined Plane used in Australia

. by Qantas on Brisbane-Singapore service (a DH86). **1935**

FIRST Through Flying Boat service to Singapore by Qantas, and—in association with Imperial Airways—to London . . . **1938**

FIRST Regular Crossing of the Indian Ocean . . . the world's longest air hop . . . by Qantas in association with B.O.A.C. with Catalinas **1943**

FIRST With B.O.A.C. and Tasman Empire Airways, to re-establish the British Air Route . . . to help maintain British Empire Air supremacy in the revolutionary developments in the Age of Flight **1946**



AUSTRALIA'S INTERNATIONAL AIRLINE

Qantas Empire Airways

in association with

BRITISH OVERSEAS AIRWAYS CORPORATION

B·O·A·C

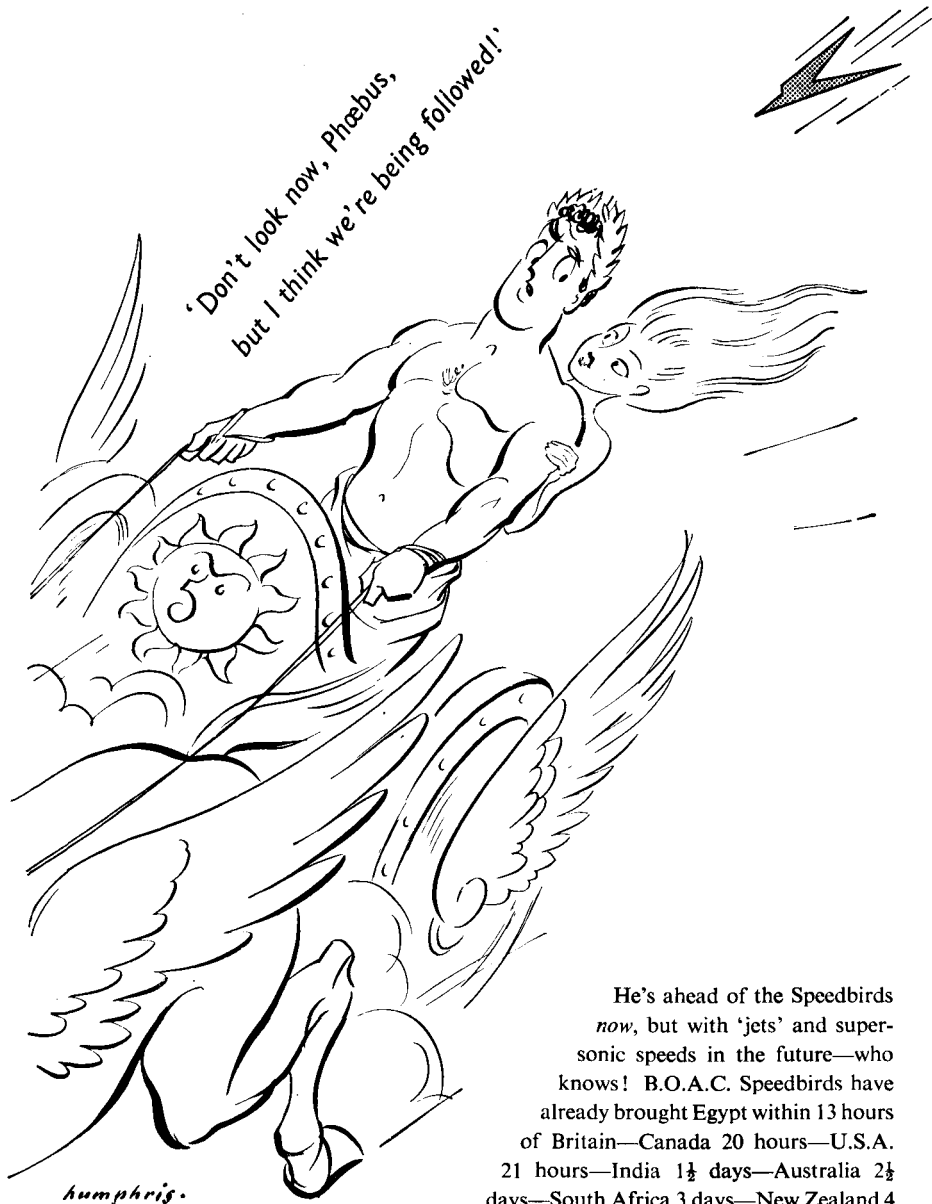
U

"U" stands for uncertainty in steels—the uncertainty about inclusions—uncertainty about regularity of physical and mechanical properties—uncertainty about both transverse and longitudinal fatigue resistance etc., etc.

YOU KEEP UNCERTAINTY
OUT OF CALCULATIONS
WHEN YOU SPECIFY
FIRTH BROWN
SPECIAL ALLOY STEELS



THOS FIRTH & JOHN BROWN LIMITED. SHEFFIELD



He's ahead of the Speedbirds *now*, but with 'jets' and super-sonic speeds in the future—who knows! B.O.A.C. Speedbirds have already brought Egypt within 13 hours of Britain—Canada 20 hours—U.S.A. 21 hours—India 1½ days—Australia 2½ days—South Africa 3 days—New Zealand 4 days—and the Far East to within 6 days' travel.



B·O·A·C IT'S A SMALL WORLD BY SPEEDBIRD

BRITISH OVERSEAS AIRWAYS CORPORATION IN ASSOCIATION WITH Q.E.A., S.A.A., T.E.A

Exide

flies in the Miles Messenger

THE MILES MESSENGER, like the Gemini and Aerovan, uses Exide exclusively. Miles Aircraft, in specifying equipment for three of the most efficient light aircraft of the post-war era, chose Exide Batteries. The vast majority of Britain's other leading aircraft manufacturers have made the same choice as initial equipment for their latest aircraft. The reason? Lighter weight with greater capacity, better performance with longer life.

The following aircraft are fitted with EXIDE Batteries as initial equipment:

AIRSPED AMBASSADOR	MILES AEROVAN
AIRSPED CONSUL	MILES GEMINI
AVRO TUDOR I	MILES MARATHON
AVRO TUDOR II	MILES MESSENGER
BRISTOL FREIGHTER	PERCIVAL PRINCE
BRISTOL WAYFARER	PERCIVAL PROCTOR
CUNLIFFE-OWEN CONCORDIA	SHORT SANDRINGHAM 'V'
HANDLEY PAGE HALTON	SHORT SOLENT
HANDLEY PAGE HERMES	SHORT SEALAND
	VICKERS VIKING

ATIB

Exide

AIRCRAFT BATTERIES

THE CHLORIDE ELECTRICAL STORAGE COMPANY LIMITED EXIDE WORKS, CLIFTON JUNCTION, NR. MANCHESTER

NEW BOOKS



TROPICAL and EQUATORIAL METEOROLOGY

By Maurice A. Garbell, D.Sc.

Since the war the tropics have entered an era of new social, technical and political importance and their meteorology is now a vital branch of weather science. The author's wide knowledge found fruitful application during the war and this is now set down in book form together with the latest concepts and theories.

In crown 4to, Cloth, and printed on art paper. 60s. Net.



METALLURGY for Aircraft Engineers Inspectors, and Engineering Students

By

R. A. Beaumont, A.F.R.Ae.S.

A practical and up-to-date book which presents Metallurgy in a manner both interesting and informative to the practical engineer and student who all too often have little knowledge of the subject and cannot tackle specialist theses. The author has wide experience in training aircraft engineers and knows their needs. His book will be widely welcomed.

25s. Net.



PRACTICAL AIRCRAFT HYDRAULICS

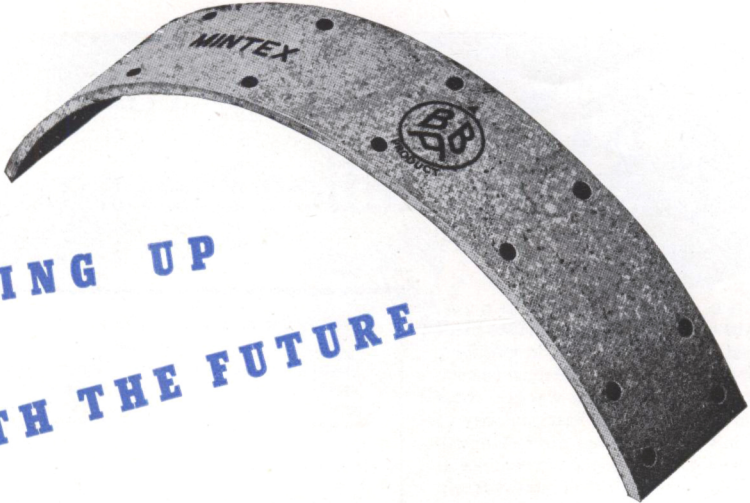
By S. G. Blozham.

An invaluable book by an eminently practical man that deals with the theory of hydraulics and with hydraulically operated equipment in aircraft. A well planned book, not hampered with data nor overwhelmed with theory. It will be of general interest and of special assistance to engineering students and those working for Ground Engineer's Licences. 18s. Net.

SIR ISAAC PITMAN AND SONS LTD · PITMAN HOUSE

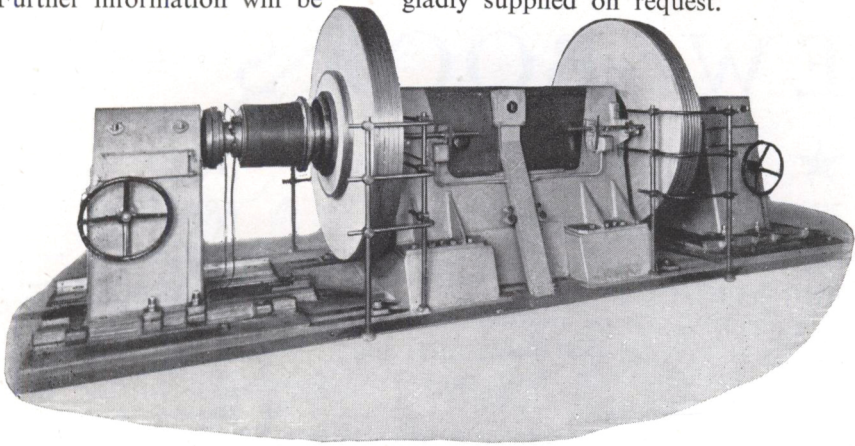
PARKER STREET · WC2 ·

from **PITMAN**



**KEEPING UP
WITH THE FUTURE**

The high efficiency of "MINTEX" brake and clutch linings is the result of constant research and experimental work. The latest addition to B.B.A. testing equipment is the Mk.V. Inertia Machine shown below, which is used for recording deceleration, torque and friction surface temperatures in one operation. This machine is solving now the braking problems of the future. Further information will be gladly supplied on request.



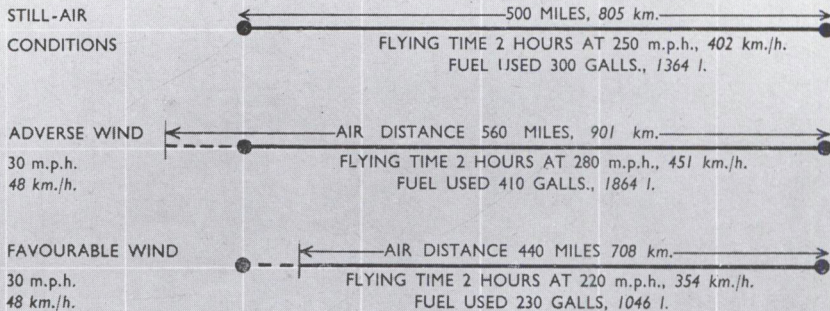
BRITISH BELTING & ASBESTOS LTD., CLECKHEATON (YORKS) & LONDON

manufacturers of

MINTEX

BRAKE & CLUTCH LININGS

CRUISING AT 10,000 FEET, 3048 m.



R E G U L A R I T Y

Airline schedules can always be maintained when a wide range of economical cruising speeds is available.

The Ambassador was initially designed to offer a high normal cruising speed, while considerations of engine reliability and operating economy required that this speed should be obtained by clean design. As a consequence, the cruising power used in achieving 250 m.p.h., 402 km./h., is only 72 per cent. of that available in weak-mixture and there is, therefore, an ample reserve for use in adverse conditions. Conversely, the low-span loading ensures a correspondingly large reserve range of economical speeds to obtain the fullest benefit from favourable winds.

- During a series of reciprocal runs, when the on-track wind-strength component averages 30 m.p.h., 48 km./h., schedules can be maintained with an increase of only 6½ per cent. in mean fuel consumption by comparison with that obtainable in still-air conditions.

AIR SPEED

Ambassador

28 - 48 Seater



AIR SPEED LIMITED, CHRISTCHURCH & PORTSMOUTH, HAMPSHIRE, ENGLAND.
ASSOCIATED COMPANIES IN AUSTRALIA, CANADA, INDIA, AFRICA & NEW ZEALAND.



KELVIN

A I R C R A F T I N S T R U M E N T S

**proven in reliability
ahead in design**



KELVIN BOTTOMLEY AND BAIRD LIMITED · BASINGSTOKE

Sole Licensees and Manufacturers for Great Britain and the British Empire (except Canada)
of Kollsman Aircraft Instruments

THE JOURNAL OF THE ROYAL AERONAUTICAL SOCIETY

With which is incorporated The Institution of Aeronautical Engineers

CONTENTS

JULY 1947

TESTING CIVIL AIRCRAFT

by P. A. Hufton, M.Sc. 575—615

THE PREVENTION OF FIRE IN AIRCRAFT

by W. G. GLENDINNING, B.A.
and
J. W. Drinkwater, D.Phil., B.Sc., Wh.Sc. ... 616—650

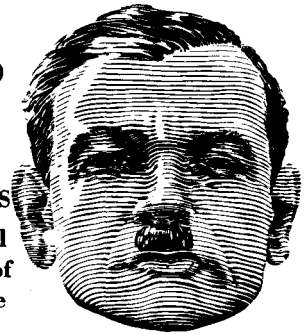
CAUTIONARY NOTE REGARDING SOME CHEMICALS USED FOR TRANSITION INDICATION

by R. C. Pankhurst, Ph.D., A.F.R.Ae.S. 651—652

CORRESPONDENCE 653—654

The Journal is published monthly at the Offices of the Society, 4 Hamilton Place, Piccadilly, London, W1. None of the papers or paragraphs must be taken as expressing the opinion of the Council of The Royal Aeronautical Society unless such is definitely stated to be the case. Subscriptions per annum, £4 13 0 including postage; Single Numbers 7/6 or 7/9 post free. All communications for publication or Advertisements in the Journal, or on general matters affecting the Society should be addressed to—The Secretary, J. Laurence Pritchard, 4 Hamilton Place, W1. The Society's Bankers are Messrs. Coutts & Co. Telephone: Grosvenor 3515 (5 lines) Telegraphic Address: Didaskolas, Audley, London.

When NORMAN CRUMP wrote this



THREE MONTHS BEFORE THE FUEL CRISIS

“... Is it right to offer the home public new electrical appliances at a time when there is a growing shortage of electricity? Would it not be more logical to begin with the manufacture of Generating Plants? ...”

he wrote it in *The Sunday Times*

DID YOU KNOW that the *Sunday Times* offers you the most distinguished group of contributors in British journalism? Just glance at this list—

Norman Crump and G. L. Schwartz on Finance and Industry: “Scrutator” on World Affairs: Charles Gayton on Politics: Ernest Newman on Music: Harold Hobson on the Theatre: Dilya Powell on Films: Eric Newton on Art: Desmond McCarthy, Charles Morgan and Ralph Strauss on Books: “Yarborough” on Bridge: “Atticus”

on “Men, Women and Memories”: Special Correspondents on Motoring, Yachting, Hunting, Aeronautics: Hugh Wynne on Cricket: Mary Delane on Women’s Interests: A. T. Johnson on Gardening: Henry Longhurst on Golf: Brigadier Smyth on Tennis: “Fairway” on Racing: special photographs and drawings by J. Dixon-Scott and Hanslip Fletcher.

If you are unable to obtain the *Sunday Times*, write to The Publisher, Kemsley House, W.C.1.

*

Landmarks in Propeller Development

First... A de Havilland manually-variable-pitch propeller was the first British m.v.p. propeller to be officially type-approved

December 1946

First... A de Havilland variable-pitch propeller was the first propeller in the world to be officially approved for Turbine installation

January 1947

First... A de Havilland constant-speed feathering and braking propeller was the first British braking propeller to be officially type-approved

April 1947

D E H A V I L L A N D
P R O P E L L E R S

