

# An electro-optic KLTN refractive index gradient deflector implemented in an active Q-switching Tm:YLF laser

Salman Noach<sup>1</sup>, Yechiel Bach<sup>1</sup>, Mulkan Adgo<sup>2</sup>, Yehudit Garcia<sup>2</sup>, and Aharon J. Agranat<sup>2</sup>

<sup>1</sup>Department of Electro optics, Jerusalem College of Technology, Jerusalem, 9372115, Israel

<sup>2</sup>Institute of Applied Physics, The Hebrew University of Jerusalem, Jerusalem 9190401, Israel

## Abstract

A novel electro-optic deflector based on a quadratic electro-optical KLTN crystal operating slightly above the ferroelectric phase transition is presented. The new deflection scheme was based on the electric field gradient generation along the vertical axis caused by the trapezoidal geometry of the crystal. A deflection angle of 6.5mRad was attained for a low voltage of 680V. The deflector was used as an electro-optic modulator for implementing active Q-switching in a Tm:YLF laser (1880nm). The laser was operated at three different repetition rates of 0.4, 0.5, 0.7kHz, and reached high energies per pulse up to 6.9mJ.

**Keywords:** 2  $\mu\text{m}$  lasers, Q-switching lasers, Electrooptic modulators, Electrooptic deflectors

## 1. Introduction

We report herein a new configuration for implementing active Q-switching in solid-state laser systems by deflecting the beam that traverses the laser resonator off its course during the accumulation of the population inversion. The deflection of the laser beam was realized by using an electrooptic (EO) potassium lithium, tantalate niobate KLTN crystal in the shape of a trapezoidal prism. Applying an electrical pulse across the sides of the trapezoid, produces a refractive index gradient that deflects the beam off the optical axis of the resonator.

KLTN is a ferroelectric crystal with composition given by  $K_{1-\beta} Li_{\beta} Ta_{1-\alpha} Nb_{\alpha} O_3$ . Its phase transition temperature ( $T_c$ ) is determined by the ratios  $[Nb]/[Ta]$  and  $[Li]/[K]$ . At the paraelectric phase, its EO effect is quadratic, and becomes exceptionally strong upon approaching  $T_c$  [1]. As opposed to its structural analog KTN, in close proximity to  $T_c$ , KLTN maintains its high optical quality, and exhibit fast EO switching [2]. KLTN can be used as an EO medium in the wavelength range  $[0.4 \mu\text{m}, 5.5 \mu\text{m}]$  through which it remains transparent.

In addition, by nature of the fact that at the paraelectric phase the electrooptic effect is quadratic, photorefractive optical damage in the KLTN can be suppressed by operating the device with a bi-polar driving voltage. As such, this active Q-switch configuration enables to exploit the fast electrooptic

effect in KLTN crystals irrespective of the polarization of the lasing beam, while avoiding the damaging effect of photons at visible wavelengths generated by a two-photon process in the laser crystal by the high-power pumping beam. This configuration is demonstrated effectively in a Tm:YLF laser system that emit at the  $2\mu\text{m}$  spectral range (1880nm), but, the wide operable wavelength range of KLTN at the paraelectric phase, enables its exploitation in other solid-state laser systems as well.

Lasers operating in the  $2\mu\text{m}$  region have many applications in a variety of fields, such as gas spectroscopy, medical microsurgery, material processing, LIDAR, eye-safe free space communication, and as a pumping source for the mid-IR region lasers, e.g., Cr:ZnSe and Cr:ZnS lasers [4]. Many applications require high energy pulsed sources for obtaining short exposure time which results in mitigated thermal damage. This brings forwards the need for lasers that employ active Q-switching for producing high energy narrow pulses.

Q-switched lasers operate by modulating the losses in the cavity. While the losses are enlarged, the stimulated emission is inhibited, allowing the population inversion to accumulate. Once the losses are reduced, the high gain due to the high level of the population inversion causes the energy accumulated in the gain medium to be released in the form of a short and intense pulse [5].

As opposed to passive Q-switching where the pulses are

Correspondence to: agranat@savion.huji.ac.il, salman@jct.ac.il

This peer-reviewed article has been accepted for publication but not yet copyedited or typeset, and so may be subject to change during the production process. The article is considered published and may be cited using its DOI.

This is an Open Access article, distributed under the terms of the Creative Commons Attribution licence (<https://creativecommons.org/licenses/by/4.0/>), which permits unrestricted re-use, distribution, and reproduction in any medium, provided the original work is properly cited.

10.1017/hpl.2024.34

emitted with fixed energy and slight jitter at the repetition rate, in active Q-switching the system operator can control the output energy, and the point in time which each pulse is generated. This is advantageous for numerous applications including LIDAR systems, advanced imaging, precise material processing and laser micro-surgery. Active Q-switching can be achieved by employing either acousto-optic or EO modulators.

EO modulators are usually used as intensity modulators. In this implementation the EO crystal is used with a quarter wave plate to change the polarization of the laser beam. The beam transverse a polarizing cube with a perpendicular polarization and is deflected from the resonator. EO deflectors constitute a rare class of EO modulators. In these devices the laser beam is deflected through a refractive index gradient that is induced using the EO effect.

Implementing active Q-switching by beam deflection, offers several advantages over alternative EO modulators. Firstly, it obviates the need for additional optical components like a polarizing cube or a quarter wave plate. Secondly, its voltage requirement remains independent of wavelength, enabling operation at longer wavelengths without adjustment. However, one drawback is its relatively small deflection angle.

In 2013 Huang et al. presented a Nd:YVO<sub>4</sub> OPO laser at 1550nm with 8 $\mu$ J in 1kHz using a deflector as a Q-switch modulator<sup>[6]</sup>. In 1998 Conroy et al. presented a KTP OPO laser at 1064nm with 4 $\mu$ J in 1-20kHz using a deflector as a Q-switch modulator<sup>[7]</sup>. In 2011, Miyazu et al. presented a KTN deflector. This deflector utilized the EO effect gradient, caused by the field induced by the density gradient of trapped electrons implanted orthogonally to the optical axis, and the external field applied across the crystal. The combined effect of these two fields generated through the quadratic EO effect a refractive index gradient that caused the traversing beam to deflect<sup>[8]</sup>.

We present herein, a novel and different deflection scheme, based on the trapezoidal shape of the KLTN crystal. The KLTN crystal operating at the paraelectric phase manifests a quadratic EO effect which upon approaching the ferroelectric phase transition, becomes remarkably large, exhibiting an electrically induced change in the refractive index of approximately 0.015 while maintaining high optical quality<sup>[3]</sup>.

As described above, deflection is obtained by using a trapezoidal shaped crystal, in which the voltage applied to electrodes deposited on the slanted sides of the trapeze generate a gradient in the field induced in the crystal across the wave-front of the propagating beam. Thus, when the voltage across the crystal is activated, the field across the propagating beam varies, which through the EO effect produces a refractive index gradient that causes the beam to deflect. A deflection of 6.5mRad was achieved for a low operating voltage of 680V.

It should be noted that in our previous paper in which

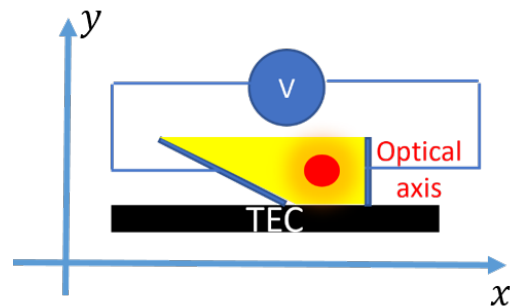


Figure 1. The deflectors trapezoid cross section.

we described an active Q-switching scheme based on polarization modulation, we also used a trapezoidal crystal<sup>[9,10]</sup>. However, in that method, the trapezoid KLTN, served as an active quarter wave plate switch, exploiting the variation in the emission cross-section between the two polarizations of the Tm:YLF and Tm:YAP crystals. Its geometrical shape wasn't a limited constraint of the method or crucial to its operations. The trapezoid shape there was used for damping raised acoustic noises for improving the modulator performance. The modulation of the laser was done by forcing a polarization in which the gain in the cavity is high or low depending on the value of the polarization cross section. The main disadvantage of the polarization modulation method is that it is restricted only to limited types of anisotropic gain crystals, where there is a significant difference in the cross section values between the two polarizations. In contrast, in the method presented herein, the KLTN crystal functions as a classic Q-switching device, producing controlled losses in the resonator. The KLTN trapezoidal geometric shape, and its cut, is obligatory to obtain a gradient in the refractive index that cause the deflection effect. This method isn't limited to anisotropic crystals and can be applied in isotropic crystals as well. A proof of concept for producing deflection in a trapezoidal KLTN crystal operating at the 2 $\mu$ m spectral range, and its employment for implementing Q-switching in a Tm:YLF laser is presented here for the first time. As described henceforth, the laser was characterized at three different repetition rates, of 0.4, 0.5, 0.7kHz, and high energies per pulse up to 6.9mJ, were achieved.

## 2. Experimental setup & Results

The deflector was a KLTN crystal that was grown by us using the top seeded solution growth method<sup>[11]</sup>. The KLTN crystal was 9mm long, with a trapezoidal cross section which is 2mm high, and with bases of 2mm and 6mm, the KLTNs cross section is shown in Figure 1. Its facets that were perpendicular to the optical axis of the resonator were coated with anti-reflective coating for  $\lambda = 1880nm$ . Aluminum electrodes were deposited on the opposite side-facets of the trapezoidal prism. The KLTN crystal was placed on

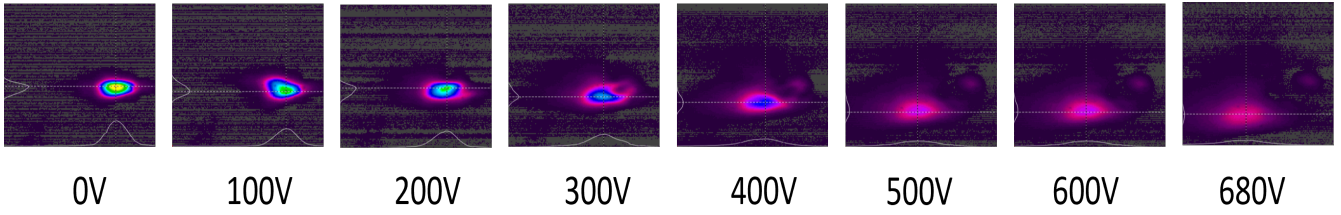


Figure 2. Beam deflection pictures at different voltages.

a thermal electrical cooler and its temperature was set to 20°C which is 6°C above the KLTNs crystal phase transition temperature, in order to enlarge the effect of the applied voltage<sup>[1]</sup>. The deflection angle as derived from the Eikonal equation is given by:

$$\theta_{def} = \frac{dn}{dy} L \quad (1)$$

Where L is the crystals length, and  $\frac{dn}{dy}$  is the induced refractive index gradient, which is caused by the variation of the EO effect. The expression for the EO effect in KLTN at the paraelectric phase is:

$$\Delta n(E) = -\frac{1}{2} n^3 g_{eff} \epsilon^2 E(y)^2 = -\frac{1}{2} n^3 g_{eff} \epsilon^2 \left(\frac{V}{d(y)}\right)^2 \quad (2)$$

Where  $\Delta n(E)$  is the electrically induced change in the refractive index, n is the refractive index of the KLTN at the paraelectric phase,  $g_{eff}$  is the effective (quadratic) EO coefficient,  $\epsilon$  is the dielectric constant, E (y) is the applied electric field (which varies along the vertical axis), V is the applied voltage, and d is the varying distance between the electrodes.

The variation of the EO effect is inversely dependant at the squared distance between the electrodes, which varies linearly along the vertical axis. Thus, the expression for the deflection angle is given by:

$$\theta_{def} = -\frac{1}{2} n^3 g_{eff} V^2 \frac{d}{dy} \left(\frac{\epsilon^2}{d^2}\right) L \quad (3)$$

Where  $\theta_{def}$  is the deflection angle of the propagating beam. It is also assumed that the dielectric constant in (3) varies across the vertical coordinate of the crystal ( $\epsilon = \epsilon(y)$ ) due to the temperature gradient across the crystal. The KLTN crystal was placed on its short base in order to align the thermal gradient with the direction of the electric field gradient.

### 2.1. Off cavity characterization

Prior to testing the active Q-switching scheme, the deflection of the KLTN crystal was measured outside the Tm:YLF laser cavity; The input beam was collimated to a beam diameter

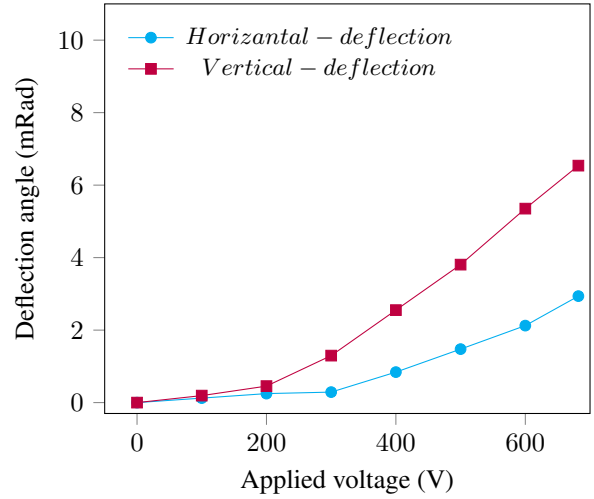


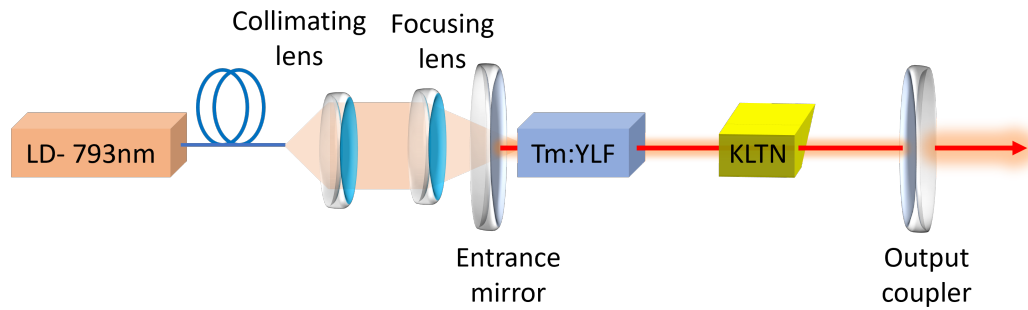
Figure 3. Deflection angle vs. the applied voltage.

of 1mm. A pyroelectric camera (Pyrocam III-HR, Spiricon) was placed 725mm after the KLTN crystal. The deflection angle was measured by examining the camera images.

The camera pictures at different voltages are shown in Figure 2. Maximal angles of deflection of 6.5mRad at the vertical axis, and of 2.9mRad at the horizontal axis, were observed for a voltage of 680V, as shown in Figure 3, and the curve profiles are parabolic as expected, since the deflection is dependent on the square of the applied voltage, as presented in equation (3).

### 2.2. On cavity characterization

Following the characterization measurements of the KLTN gradient deflector, a Tm:YLF laser system was built, in which the KLTN gradient deflector served as the Q-switching apparatus. The laser system is shown in Figure 4. The Tm:YLF laser was pumped by a 30W fiber coupled diode laser operating at 793nm, that was collimated and focused to a spot diameter of 440 $\mu$ m on the gain medium, using a pair of plano convex lenses with focal lengths of 40mm and 100mm respectively. The Tm:YLF cavity included a plano input mirror with high transmission for the pumping wavelength (793nm) and high reflectance for the Tm:YLF wavelength (1880nm). The Tm:YLF crystal



**Figure 4.** The system scheme of the actively Q-switched Tm:YLF laser based on an EO KLTN deflector.

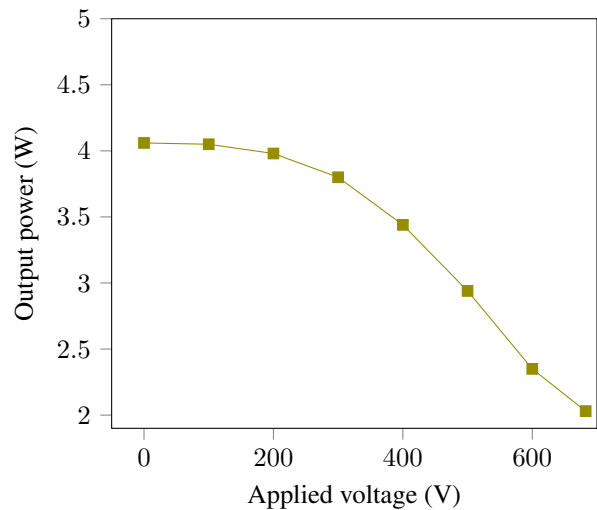
(3 at.%) was 15mm long with a cross section of  $3 \times 3 \text{ mm}^2$ . The Tm:YLF crystal was oriented so that its emitted beam polarization was parallel to the applied voltage direction, since the EO coefficient is larger in this way<sup>[3]</sup>. The output coupler was with a radius of curvature of 200mm, and 55% partially reflective for the Tm:YLF wavelength (1880nm).

As can be seen in Figure 4 the laser was designed so that the undeflected beam that traverses the KLTN crystal is co-aligned with the cavity axis. Whereas activating the field across the KLTN crystal caused the transmitted beam to deflect sideways and distort as presented in Figure 2. Thus, applying the field across the KLTN crystal induces losses in the cavity that prevent lasing, so that the population inversion is allowed to accumulate.

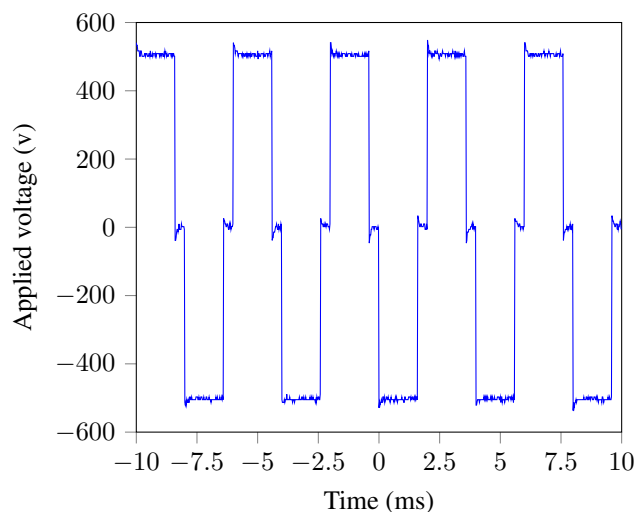
The KLTN crystal was positioned as far as possible from the output coupler's focal point, (and therefore, very close to the output coupler), in order to maximize the influence of the applied voltage on the induced losses in the cavity, (taking into account that the minimum distance between the output coupler and the KLTN crystal was limited due to the relatively large beam diameter near the output coupler, and the KLTNs dimensions). The effect of the losses caused by the applied voltage on the laser performance was measured when the laser was operated in the CW mode. The output power was measured, after filtering the residual pump power, using a power meter (Ophir, L50(150)A-35).

The Tm:YLF laser emitted 4.1W, for 25W of pumping power while the applied voltage was off. While the applied voltage was 680V the Tm:YLF laser emitted 2W which is about 50% of the full output power. The influence of the applied voltage, on the laser output power is presented in Figure 5. It is seen in Figure 5, that the influence of low voltages is minor, which was expected since the deflection was small at low voltages, as presented in Figure 3.

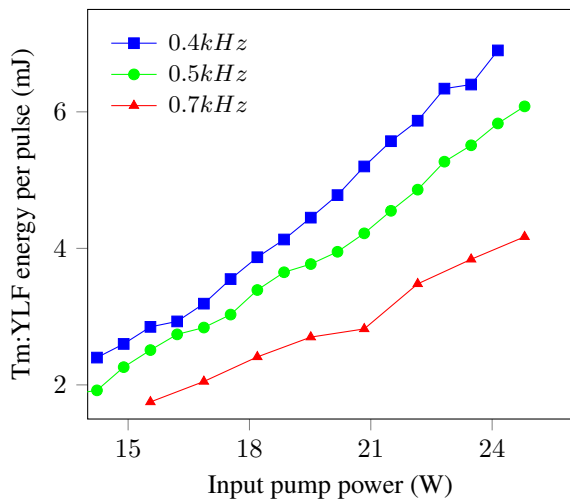
The laser was then operated in a pulsed mode. It should be noted that the Tm:YLF crystal, when pumped at high power, generates blue photons due to the upconversion process<sup>[12]</sup>. These generate a photorefractive space-charge in the KLTN crystal causing optical damage which mitigates the laser operation. This hurdle was overcome by operating the KLTN



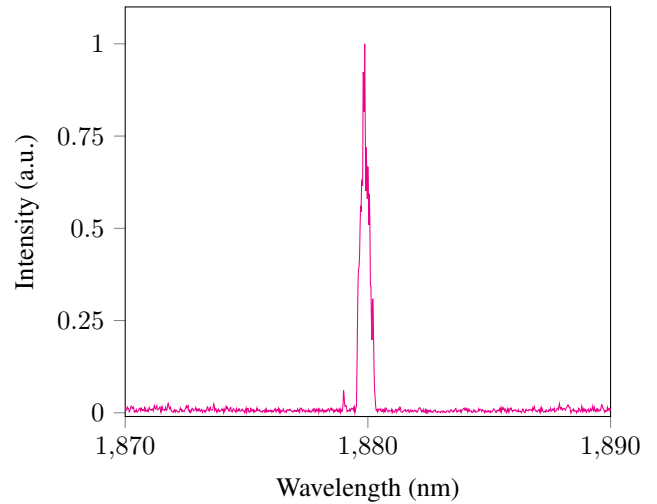
**Figure 5.** Influence of the applied voltage on the laser output power.



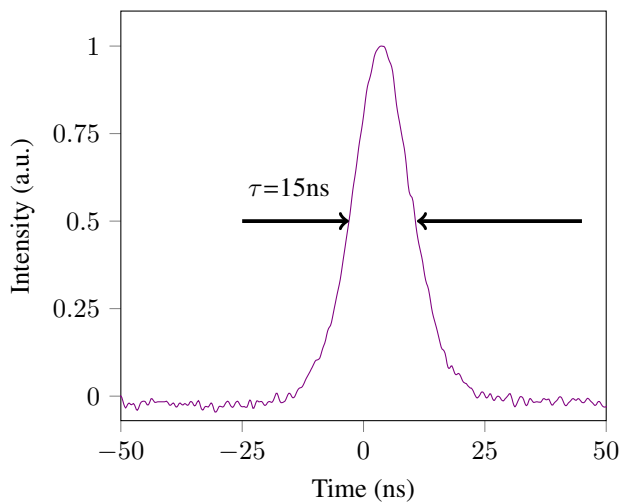
**Figure 6.** The bi-polar modulated voltage profile vs time, in a repetition rate of 0.5kHz.



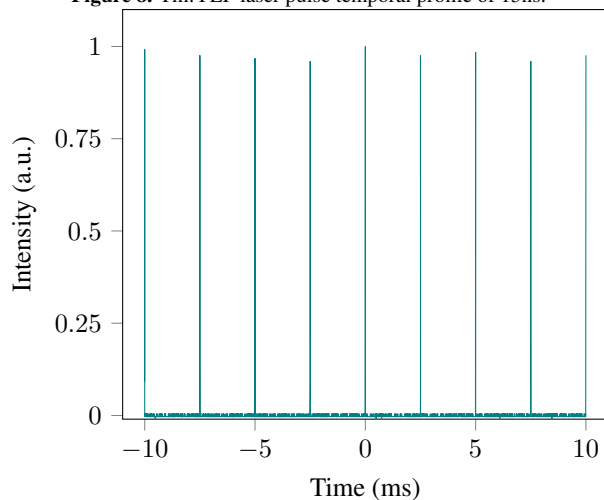
**Figure 7.** Tm:YLF energy per pulse in 0.4kHz, 0.5kHz and 0.7kHz.



**Figure 10.** Tm:YLF laser spectrum acquired by a pulsed laser spectrum analyzer (Bristol, 772B).



**Figure 8.** Tm:YLF laser pulse temporal profile of 15ns.



**Figure 9.** Tm:YLF pulse train at 0.4kHz.

deflector with a bi-polar driving voltage (with a rise and fall time of approximately 30ns). As shown in<sup>[13]</sup>, due to the fact that the EO effect in the KLTN crystal at the paraelectric phase is quadratic, this does not affect the propagating beam, but prevents the photorefractive space-charge from being accumulated, so that optical damage is avoided. The time dependence of the modulating voltage is shown in Figure 6. The energy per pulse under this bi-polar modulated voltage, was then measured vs. the input pump power.

The pulse energy was measured with an energy meter (Ophir, PE50-C). Pulse temporal characterization was performed using an extended InGaAs fast photodetector with 28 ps rise-time (EOT, ET-5000, 12.5 GHz) and a 100 MHz oscilloscope (Agilent, DSO5012A).

In the pulsed mode, considerably low voltage of 500V was applied on the KLTN crystal. The laser was operated at three different repetition rates of 0.4kHz, 0.5kHz and 0.7kHz. EO crystals are commonly limited by acoustic waves that disturb the optical response, at high repetition<sup>[14]</sup>. Such acoustic waves occur at the KLTN crystal as well<sup>[2,9,10,15]</sup>, which could be the reason why the laser did not exceed the repetition rate of 0.7kHz. At 0.4kHz the laser generated pulses with energy of 6.9mJ per pulse corresponding to a slope efficiency of 18.7%, and optical-to-optical conversion of 11.4%. At 0.5kHz the laser generated pulses with energy of 6.1mJ per pulse corresponding to a slope efficiency of 18.9%, and optical-to-optical conversion of 12.2%. At 0.7kHz the laser generated pulses with energy of 4.2mJ per pulse corresponding to a slope efficiency of 18.4%, and optical-to-optical conversion of 11.8%. The energy per pulse is presented in Figure 7. The pulse temporal profile of a representative 15ns is presented in Figure 8. The laser pulses stability can be seen at the pulse train measurement taken at 0.4kHz, and is shown in Figure 9. The laser emitted at the the wavelength of 1880nm with a spectral bandwidth of 0.4nm

is presented in Figure 10.

### 3. Conclusion

In conclusion, a novel EO deflector based on a KLTN crystal which was cut in the shape of a trapezoidal prism which performed as an EO index gradient deflector. Off cavity, the deflector produced a deflection of 6.5mRad. With the deflector positioned inside the Tm:YLF cavity, the laser was operated at three different repetition rates of 0.4, 0.5 and 0.7kHz, and obtained 6.9, 6.1 and 4.2mJ energies per pulse respectively. This is the first demonstration of a KLTN crystal as an EO deflector for implementing active Q-switching. This constitutes a first demonstration of performing active Q-switching using EO gradient deflector implemented by a KLTN crystal at the paraelectric phase. This configuration for performing active Q-switching is independent of the beam polarization neither the gain medium crystalline structure, and as such inherently more efficient from other EO active Q-switching configurations, while exploiting the inherent speed of EO switching.

**Acknowledgment:** The Project was supported by the Israel Ministry of Science, Technology and Space.

**Funding:** The Project was supported by the Israel Ministry of Science, Technology and Space Grant No. 88428.

### References

- Hirshfeld, G., Vidal, Y., Garcia, Y., Perepelitsa, G., Karsenty, A., Kabessa, Y., & Agranat, A. J. (2021). Enhanced electro-optic effect in potassium lithium tantalate niobate at the paraelectric phase near T<sub>c</sub>. *Results in Physics*, 23, 104059.
- Vidal, Y., Noach, S., & Agranat, A. J. (2020, March). Electro-optic pulse generation at the 2μm wavelength range in proximity to the ferroelectric phase transition in KLTN crystals. In *Oxide-based Materials and Devices XI* (Vol. 11281, pp. 135-146). SPIE.
- Gumennik, A., Kurzweil-Segev, Y., & Agranat, A. J. (2011). Electrooptical effects in glass forming liquids of dipolar nano-clusters embedded in a paraelectric environment. *Optical Materials Express*, 1(3), 332-343.
- Scholle, K., Lamrini, S., Koopmann, P., Fuhrberg, P., & Pal, B. (2). μm laser sources and their possible applications," *Frontiers in Guided Wave Optics and Optoelectronics*, (2010).
- Svelto, O., & Hanna, D. C. (2010). *Principles of lasers* (Vol. 1). New York: Springer.
- Huang, J. F., Chang, W. K., Chung, H. P., Huang, S. S., Chang, J. W., & Chen, Y. H. (2013). Double-prism domain PPLN for simultaneous laser Q-switching and optical parametric oscillation in a Nd: YVO 4 laser. *Optics Express*, 21(25), 30370-30378.
- Conroy, R. S., Rae, C. F., Friel, G. J., Dunn, M. H., Sinclair, B. D., & Ley, J. M. (1998). Compact low-threshold Q-switched intracavity optical parametric oscillator. *Optics letters*, 23(17), 1348-1350.
- Miyazu, J., Imai, T., Toyoda, S., Sasaura, M., Yagi, S., Kato, K., Sasaki, Y. & Fujiura, K. (2011). New beam scanning model for high-speed operation using KTa<sub>1-x</sub>Nb<sub>x</sub>O<sub>3</sub> crystals. *Applied Physics Express*, 4(11), 111501.
- Noach, S., Nahear, R., Vidal, Y., Garcia, Y., & Agranat, A. J. (2021). Electro-optic active Q-switched Tm: YLF laser based on polarization modulation. *Optics Letters*, 46(8), 1971-1974.
- Nahear, R., Bach, Y., & Noach, S. (2022). Electro optic Tm: YAP/KLTN laser using polarization modulation. *Optics & Laser Technology*, 146, 107548.
- Hofmeister, R., Yariv, A., & Agranat, A. (1993). Growth and characterization of the perovskite K<sub>1-y</sub>Li<sub>y</sub>Ta<sub>1-x</sub>Nb<sub>x</sub>O<sub>3</sub>: Cu. *Journal of crystal growth*, 131(3-4), 486-494.
- Zhang, X. X., Hong, P., Bass, M., & Chai, B. H. T. (1995). Blue upconversion with excitation into Tm ions at 780 nm in Yb-and Tm-codoped fluoride crystals. *Physical Review B*, 51(14), 9298.
- Kabessa, Y., Yativ, A., & Agranat, A. J. (2015). Electro-optical modulation with immunity to optical damage by bipolar operation in potassium lithium tantalate niobate. *Optics express*, 23(4), 4348-4356.
- Roth, M., Tseitlin, M., & Angert, N. (2005). Oxide crystals for electro-optic Q-switching of lasers. *Glass physics and chemistry*, 31, 86-95.
- Nahear, R., Vidal, Y., Noach, S., & Agranat, A. J. (2020, March). Active Q-switch Tm: YLF based on electro-optic KLTN. In *Solid State Lasers XXIX: Technology and Devices* (Vol. 11259, pp. 176-181). SPIE.