

Case Study

Cite this article: Leary J, Mahnken B, Wada C, Burnett K (2018) Interpreting life-history traits of miconia (*Miconia calvescens*) through management over space and time in the East Maui Watershed, Hawaii (USA). *Invasive Plant Sci Manag* 11:191–200. doi: 10.1017/inp.2018.26

Received: 1 June 2018

Revised: 10 September 2018

Accepted: 25 September 2018

Associate Editor:

Steven S. Seefeldt, Washington State University

Key words:

Asset protection; cost avoidance; dispersal kernel; propagule bank persistence; stage matrix model

Author for correspondence:

Kimberly Burnett, University of Hawaii Economic Research Organization, University of Hawaii at Manoa, 2424 Maile Way, Saunders Hall 540, Honolulu, HI 96822. (Email: kburnett@hawaii.edu)

Interpreting Life-History Traits of *Miconia calvescens* through Management over Space and Time in the East Maui Watershed, Hawaii (USA)

James Leary¹, Brooke Mahnken², Christopher Wada³ and Kimberly Burnett⁴

¹Associate Specialist, Department of Natural Resources and Environmental Management, University of Hawaii at Manoa, Honolulu, HI, USA, ²GIS Specialist, Maui Invasive Species Committee, Makawao, HI, USA, ³Research Economist, University of Hawaii Economic Research Organization, University of Hawaii at Manoa, Honolulu, HI, USA and ⁴Specialist, University of Hawaii Economic Research Organization, University of Hawaii at Manoa, Honolulu, HI, USA

Abstract

Miconia calvescens DC was introduced to the East Maui Watershed (EMW) a half-century ago with more than 25 yr of management recorded. Using a historical spatiotemporal data set, we constructed a leptokurtic dispersal kernel with 99% of progeny confined to within 549 m of the nearest maternal source and the remaining 1% dispersed out to 1,636 m. Seedbank persistence, based on postdated recruitment, displayed an exponential decay projecting extinction beyond 20 yr. These parameters are highly congruent to independent interpretations of *M. calvescens* in Australia and Tahiti. In a simulated stage matrix model, we projected management efforts to locally eradicate a small incipient propagule bank wherein optimal management was achieved with an annual harvest rate that eliminated all juvenile recruits before reaching maturity, until extinction. Based on current pricing for helicopter herbicide ballistic technology (HBT) operations, the optimal, variable cost to locally eradicate this incipient propagule bank was estimated to be less than US\$42,000, with ~90% of the effort searching for the most distant 1% of the progeny expended within the first 9 yr after the mature discovery. This variable cost was sensitive to seedbank size, recruitment rate, and dispersal range, but was most sensitive to harvest rates between suboptimal and excess. In a scenario prioritizing the upper region of EMW, we retroactively analyzed past HBT efforts eliminating satellite *M. calvescens* and determined that 27% of the total effort resulted in 87% of the total protection to this priority asset, with every US\$1 invested potentially avoiding US \$184 in future costs. Management outside the priority area was less economical, with returns in protection diminishing with distance from the priority upper region. *Miconia calvescens* is currently not eradicable in the EMW, and full containment of the invasion would require a substantial increase in stable, long-term funding. With limited resources, local eradication of satellite *M. calvescens* could be the most cost-effective alternative to protecting uninvaded areas prioritized for critical ecosystem functions.

Introduction

Effective management of invasive plant species requires an understanding of ecological and biological potential and how these change under varying levels of mitigation and management efforts (Carlton 2003; Finnoff et al. 2005; Keller et al. 2009). With the objective of population reduction and/or eradication, the problem becomes one of minimizing management costs given current and potential spread of the species. Despite the increased practice of invasive plant management across landscapes around the world, little is known regarding the expected costs, returns, and outcomes of control operations (Kerr et al. 2016; van Wilgen et al. 2016; Wagner et al. 2017).

Advances in theoretical invasive species management include conditions for eradication (Olson and Roy 2002); policy options under uncertainty (Horan et al. 2002); and integrated detection, prevention, and control (Burnett et al. 2008, 2012; Leung et al. 2002; Mehta et al. 2007). There are a limited number of case studies from around the world estimating total economic implications, including management costs and damages (Pimentel 2011; Pimentel et al. 2005), and bioeconomic analyses have been developed to predict economic implications with more limited data (Cook et al. 2007; Eiswerth and Van Kooten 2002; Frid et al. 2013), including a stage matrix simulation model applied to the eradication of a miconia (*Miconia calvescens* DC) infestation in Queensland, Australia (Hester et al. 2010). In similar fashion, we will explore some of the critical life-history traits of *M. calvescens* by using management data

Management Implications

Historical management data, containing spatial and temporal attributes of where and when target invaders were eliminated, can be used to profile life-history traits of an invasive plant species. Here, we describe the dispersal range and persistence (i.e., kernels) of propagules derived from a 25-yr record of management in a strategy that is ongoing and transitioning. The basic feature critical to deciphering these patterns is the distinction of targets as mature or juvenile, which establishes distance and time associations of juvenile recruitment from the maternal source. Here, optimal efforts to eliminate all juvenile recruits before reaching maturity presents the best outcome to protect local area assets. Moreover, excess effort to prevent maturity is likely to be more practical and economical than suboptimal efforts allowing a mature *Miconia calvenscens* to expand the range and extend persistence of the invasion. In spite of the unique qualities of this management scenario, the approach to consistently record data for every target plant treated (e.g., GPS) is universally translatable to most field-level operations. Beyond historical perspective, new intelligence can be effective in projecting future tactical decisions. Administrative interpretation of future cost avoidance (i.e., resulting from juveniles reaching maturity) could further facilitate a prioritization process for assigning limited resources that offer the best returns in asset protection or informing new strategy to establish resource thresholds in order to succeed in more comprehensive containment and eradication.

in the East Maui Watershed (EMW) from 1991 to 2016 and develop bioeconomic comparisons of management options.

Miconia calvenscens is a midstory canopy species native to South and Central America, classified among the “100 of the world’s worst invasive alien species” by the IUCN (Lowe et al. 2000). It is a forest ecosystem modifier in many tropical regions of the Pacific Rim (Medeiros et al. 1997; Meyer and Florence 1996; Nanko et al. 2015). *Miconia calvenscens* is shade tolerant and able to displace native plant communities, transforming diverse forests into dense monospecific canopies, which can impoverish understory vegetation and expose the soil surface below the canopy (Meyer and Florence 1996). *Miconia calvenscens* has large, elliptical leaves (i.e., up to 2,400 cm²; Meyer 1998) that create coalesced water drops with high-impact throughfall, accelerating localized soil erosion (Giambelluca et al. 2009; Nanko et al. 2013, 2015). This species has been observed with a disproportionately large canopy supported by a shallow root system, which, along with its propensity to colonize steep slopes, may increase landslides, as observed in Tahiti (Gagné et al. 1992).

Miconia calvenscens is a major threat to the EMW, an ~50,000-ha forested landscape on the windward slope of Haleakala Volcano extending from coastline to crater, with an elevation gradient from sea level to 3,055 m above sea level (m a.s.l.). The EMW provides critical habitat to more than 100 threatened and endangered species and annually recharges more than 1.135 trillion liters of fresh groundwater (Shade 1999) that represent vital ecosystem services for life and agriculture on Maui. This area is climatically diverse, with wide mean annual temperature gradients (midday 9 to 26 C) and precipitation (652 to 10,271 mm). Much of the landscape is inaccessible to ground operations, with 72 separate drainage basins, all having slopes > 30°, relegating much of the

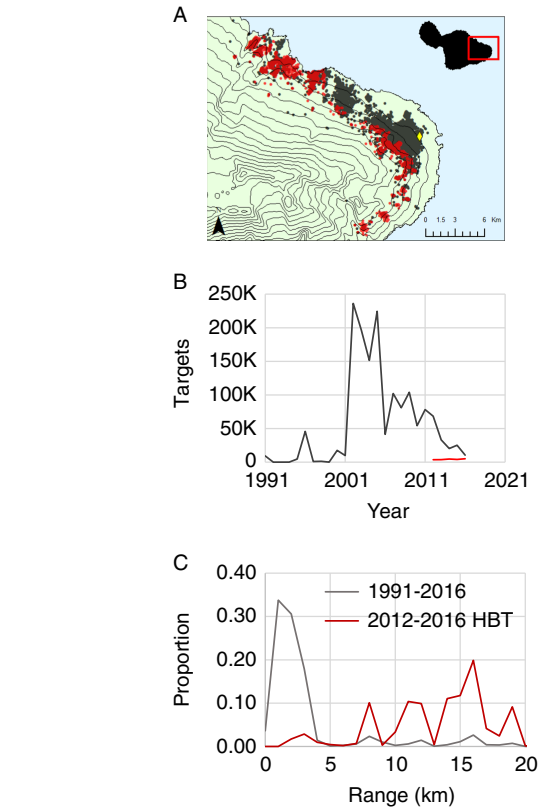


Figure 1. (A) Comprehensive eradication (1991–2016; $n=1,516,727$; gray) and containment via herbicide ballistic technology (2012–2016; $n=21,072$; red). (B) The number of eliminated *Miconia calvenscens* recorded each year. (C) The frequency distribution of range distances from the founder population. Note the location of the founder population and first volunteer removal effort (yellow diamond in A). Note contour line intervals at ~150 m a.s.l. (i.e., 500 feet a.s.l.).

current *M. calvenscens* management strategy to aerial operations, the focus of this paper.

Miconia calvenscens was introduced to Hana, Maui, as an ornamental specimen (i.e., founder population) in the early 1970s and not identified as a major invader of the EMW until two decades later, when active management commenced (see Medeiros et al. 1997). The first volunteer effort, in 1991, removed 9,320 *M. calvenscens* plants around the original point of introduction (Gagné et al. 1992). With plant maturity achieved in as little as 4 yr (Meyer and Malet 1997), we assume that several generations were reproduced within that 20-yr period leading up to the first harvest. In 2001, the National Park Service mobilized their Pacific Islands Exotic Plant Management Team in collaboration with the Maui Invasive Species Committee to accelerate a more comprehensive eradication strategy to reduce the core infestation and intercept satellite plants (Figure 1). Both ground and aerial operations ensued. The program was able to maintain strong efforts until 2012, resulting in more than 1 million plants eliminated (Figure 1B). In 2012, herbicide ballistic technology (HBT) was introduced to eliminate satellite *M. calvenscens* more efficiently, with long-range precision and accuracy (Leary et al. 2014). Adoption of HBT coincided with strategic support falling below thresholds to achieve comprehensive eradication, effectively transitioning to containment with HBT helicopter operations targeting the most remote populations. From 2012 to 2016, more than 116 missions (with 377 h of operational flight time) have resulted in the elimination of more than 21,000 *M. calvenscens*

occupying more than 30% of the EMW. As a result of this shift to containment, fruiting trees in the core infestation area (~2,000 ha) surrounding the point of introduction are coalescing into monotypic stands “saturating” the landscape. Strategic support continues to decline, pushing the notion that effective containment of such a large area cannot be sustained either.

Cacho et al. (2008) presented a decision model determining when it is optimal to switch from eradication to containment and, further, when it is optimal to terminate management. As stated earlier, eradication and comprehensive containment of *M. calvescens* in the EMW may no longer be viable strategies. However, conservation of this small, but highly productive ecosystem is a high priority for local stakeholders, particularly the mitigation of invasive plant species (Loope and Mederios 1994; Mederios et al. 1995). Thus, we seek to examine a management alternative to full program termination with a focus on protecting priority ecosystem assets via local eradication of *M. calvescens* satellites and incipient populations. Beyond evaluating the services provided, we must understand the cost to locally manage these remote, satellite invaders and further determine what level of protection is secured by excluding *M. calvescens* from a priority asset area. It is important to measure this spatially and temporally. To answer these questions, we deploy methods to estimate critical life-history traits for propagule dispersal and persistence exhibited in the EMW, using a 25-yr management data set identifying the location and time of each *M. calvescens* individual eliminated. From there we simulate the development of an incipient population started by a single new, mature *M. calvescens* and estimate the sustained level of management needed to locally eradicate this incipient population. Finally, we evaluate cost-effectiveness of eliminating juvenile *M. calvescens* before they reach maturity with a return equivalent to avoid the future management costs incurred eliminating their progeny. (Box 1)

Materials and Methods

Estimating *Miconia calvescens* Life-History Traits

Miconia calvescens is a highly fecund, autogamous (self-fertile) species. Trees reach maturity in 4 yr (or longer; see Murphy et al. 2008) and usually only produce two panicles in the first year of reproduction (Meyer 1998; Murphy et al. 2008). In Tahiti, Meyer (1998) reports an average of 210 fruits infructescence⁻¹ and 195 seeds fruit⁻¹. Thus, a single *M. calvescens* has the potential to produce more than 80,000 seed propagules when it first reaches maturity and further produces millions of seed in more advanced stages of maturity. Meyer (1998) determined three flowering periods per year, but a single plant is typically observed to flower once annually (Hardesty et al. 2011; Hester et al. 2010). Ellison et al. (1993) measured up to 0.4% progeny survivorship for other species of Melastomataceae, possibly due to cohort competition, pathogenesis, or herbivory. In this study, we assume this “penalty” on a first mature *M. calvescens*, such that it only produces 320 surviving progeny capable of succeeding to maturity. Given that adult *M. calvescens* become sympodial (Meyer and Malet 1997), we assume for this study a successive doubling in fecundity every year after maturity.

We have an almost complete 26-yr history of *M. calvescens* management in the EMW with time-stamped, georeferenced locations of targets eliminated by ground and aerial operations from 1991 to 2016 ($n = 114,953$ representing 1,516,727 *M. calvescens* individuals), including mature targets ($n = 9,153$), and

aerial operations deploying HBT from 2012 to 2016 ($n = 21,072$). A dispersal kernel is a two-dimensional probability density function (PDF) describing the distribution of progeny relative to the maternal source (Klein et al. 2013). Here, we use these spatiotemporal data to develop PDFs (i.e., kernels) for both range distances and time intervals based on the nearest maternal source. The Near Analysis tool (ArcGIS v. 10.2.2, Esri, Redlands, CA) was used to create a table matching all *M. calvescens* target points to the nearest 50 mature target points with corresponding distance and time attributes (i.e., with ~6 million matches). This over-abundant, point-match database was then queried with Access (Microsoft, Redmond, WA) to select the match with the closest mature point that was at least 1 yr older. This minimum 1-yr time separation was assumed to be when juvenile recruits may reach detectable size. Here, we interpret the distance as dispersal range and the time interval as recruitment. The PDFs were displayed from 10 m and yearly bins for distances and time intervals, respectively, creating dispersal and persistence kernels.

A Simple Stage Matrix Model for *Miconia calvescens*

A stage matrix model projects populations over time. A simplified three-stage matrix model was developed based on methods used by Buhle et al. (2005), Hester et al. (2010), and Cacho et al. (2007), citing Caswell (2001). Here, we describe an incipient invasion starting with an initial cohort of propagules ($x_i = 320$) succeeding to juveniles, then matures, managed annually as a harvest rate proportional to the number of recruits:

$$L = \begin{bmatrix} 0 & 0 & f \\ p_{pr} & p_{pr,jv} & 0 \\ 0 & p_{jv,mt} & p_{mt} \end{bmatrix}; \quad x_i = \begin{bmatrix} 320 \\ 0 \\ 0 \end{bmatrix} \quad [1]$$

The propagule bank (pr) at time (t) is determined by a first-order exponential decay (i.e., recruitment) of the preexisting bank at $t - 1$ and augmented by the fecundity (f) of future mature cohorts (mt) at t ; arbitrarily limiting fecundity to a census ≥ 0.5 :

$$pr_t = pr_{(t-1)}e^{-r} + \lim_{mt \rightarrow 0.5} mt f_t \quad [2]$$

where juveniles (jv_t) are a composite of new juvenile recruits of $pr_{(t-1)}$ and the surviving (i.e., undetected) residents ($jv_{(t-1)}$) remaining after harvest (h):

$$jv_t = (pr_{(t-1)}(1 - e^{-r}) + jv_{(t-1)})(1 - h) \quad [3]$$

Here, we assume maturity is achieved on the fourth year for juveniles remaining after three successive harvests; arbitrarily limiting the transition of fourth-year juveniles to maturity at a census ≥ 0.5 :

$$mt_t = \lim_{jv \rightarrow 0.5} \sum_{i=3}^n jv_{(t-i)}(1-h)^i \quad [4]$$

Fecundity doubles each year after first maturity ($x_i = 320$):

$$f_t = \sum_{i=1}^n mt_i \times 320e^{0.6931(t+i)} \quad [5]$$

The asymptotic growth rate (λ), also referred to as the dominant eigenvalue of the matrix model, is the ratio of total populations between successive annual time steps:

$$\lambda_t = \frac{x_t}{x_{(t-1)}} \quad [6]$$

This metric is a simple determination of population growth ($\lambda > 1$), containment ($\lambda = 1$), or suppression ($\lambda < 1$).

Individual-based Models Developed to Inform *Miconia calvenscens* Management

While the stage matrix model measured population dynamics over time, an individual-based model was developed to track the management efforts over space required to eliminate all colonizing progeny of a single satellite *M. calvenscens* reaching maturity. Spatially, point density raster annuli were created from *M. calvenscens* point locations by decimally binned radial (i.e., near) distances calculated from the dispersal PDF described earlier (Figure 2A). Hence, each annular ring contained 32 progeny (e.g., 1% of the total). The probability of detection (p_d) of a *M. calvenscens* target was based on a random search effort described previously by Cacho et al. (2007) and later adopted by Leary et al. (2014) and the probability of no detection (p_{nd}) of *M. calvenscens* as the inverse of p_d (see Supplementary Figure S1):

$$p_d = 1 - e^{-c}; p_{nd} = e^{-c} \quad [7]$$

where p_d is an imperfect process asymptotically approaching unity with increasing coverage (c), and p_{nd} approaches zero with increasing c (see Supplementary Figure S1). The resulting probabilities of presence/absence qualify our confidence in search effort. Coverage was based on surveillance operations from a helicopter with a three-person crew at speeds $< 8 \text{ m s}^{-1}$ with flight lines parallel to contour and normal to terrain aspect with a mean sight range of 16 m (Rodriguez et al. 2016) creating an oblique view for the observers with a central macular field of view of $\sim 100 \text{ m}^2$, which is approximate to the pixel dimensions of most GIS rasters (i.e., 10 m pixel). In this model, we estimate coverage to equal a search encounter of 1 s pixel^{-1} . Thus, spatially complete search coverage is the combination of encounters finding all of the targets, complemented by added search to confirm no targets in the previously occupied and unoccupied areas.

$$c_{\text{pixel}} = -((\ln(1 - p_d) \times \rho_{\text{target}}) + \ln p_{nd}) \quad [8]$$

where coverage of a pixel area (c_{pixel}) is dependent on target density (ρ_{target}), and spatially all pixel areas are obligated to some level of coverage. Optimal coverage is proportional to known recruitment rates over time. Methods to treat *M. calvenscens* are highly reliable and effective (e.g., $> 98\%$), thus, making *M. calvenscens* elimination practically dependent on detection achieved by search effort (Leary et al. 2014).

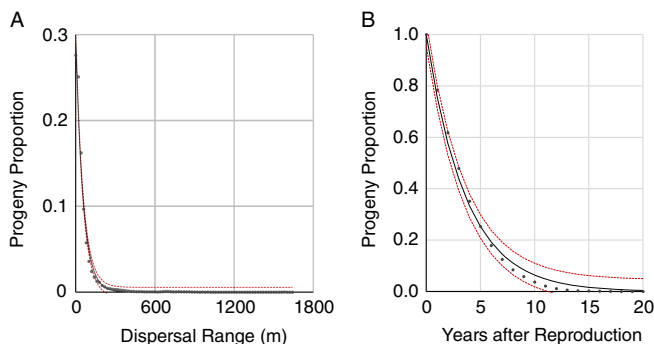


Figure 2. (A) Dispersal and (B) propagule bank persistence (recruitment) kernels displayed from histograms of progeny distances and time intervals, respectively, from the nearest mature predecessor ($n = 114,953$). Each distribution is described with a first-order negative exponential function (black lines; $R^2 = 0.982$ and 0.997 , respectively) with 95% confidence intervals (red-dashed line).

Variable Costs of HBT Operations for *Miconia calvenscens* Management

As described earlier, the basic tactics are to search, detect, and eliminate *M. calvenscens* from a helicopter platform. Previous studies have determined that operations are target-density dependent with strong linear fits for search effort (i.e., flight time) and herbicide use rate (Leary et al. 2014). Utility helicopter services on Maui have been contracted at $\text{US}\$1,200 \text{ h}^{-1}$, which translates to $\text{US}\$0.33 \text{ s}^{-1} \text{ pixel}^{-1}$. The mean dose per target is 23.3 projectiles, with a projectile price point of $\text{US}\$0.31$ for an individual treatment cost of $\text{US}\$7.22$. We have estimated flight time to engage target at 39.6 s for an added cost of $\text{US}\$13.07$, bringing the total cost of eliminating one *M. calvenscens* plant to $\text{US}\$20.29$ (unpublished data).

Prioritizing Protection of EMW Assets

To consider a strategic transition from containment to asset protection in the EMW, we established the upper catchment basins above 400 m a.s.l. as a first-priority asset, which was based on the contour where the irrigation diversion system is installed and also where endemic plant communities are higher density (Gingerich 2005; Shade 1999). The upper boundary of this 20,863-ha area was delineated at 1,220 m a.s.l., which is surmised to be the approximate threshold for *M. calvenscens* habitat suitability (Pouteau et al. 2011). The second- (3,379 ha) and third-priority (5,554 ha) containment areas were extended below the 400 m a.s.l. contour, based on the ranges for 0.99 and 1.0 percentiles of the dispersal kernel, described earlier, where proportionally up to 50% and $< 1\%$ of dispersed progeny could colonize the upper catchment asset area, respectively. All HBT operations data (i.e., operational flight time and treated *M. calvenscens* targets from 2012 to 2016) were retroactively superimposed to these buffer areas and assigned a treatment cost, described earlier. We assumed impact of a newly invaded area to be created by a single, juvenile *M. calvenscens* succeeding to first maturity, with the life-history traits spatially and temporally applied. The impact area was calculated as a composite of annular density rasters radially determined by decimal proportions of the dispersal PDF. For instance, a first-mature *M. calvenscens* producing 320 progeny will disperse 3.2 of those in each of the 100 annular rings of varying areas. When a *M. calvenscens* plant is eliminated before maturity, it is assumed that future costs are avoided to extinguish a newly established propagule bank.

Software and Descriptive Statistics

GPS data were compiled and analyzed using ArcGIS (v. 10.2.2, Esri) and Access and Excel (Microsoft). The XLSTAT add-in (v. 19.5, Addinsoft, New York, NY) was used for nonlinear regression analyses of the best-fit first-order negative exponential functions for dispersal and persistence kernels.

Results and Discussion

Shigesada et al. (1995) describe three stages of an invasion: incipient establishment, range expansion, and habitat saturation. The hypothetical invasion curve (depicted in Figure 3; adopted from Chippendale 1991; Hobbs and Humphries 1995) intuitively uses the logistic growth function for determining strategic goals to eradicate a population, contain an invasion, and protect assets,

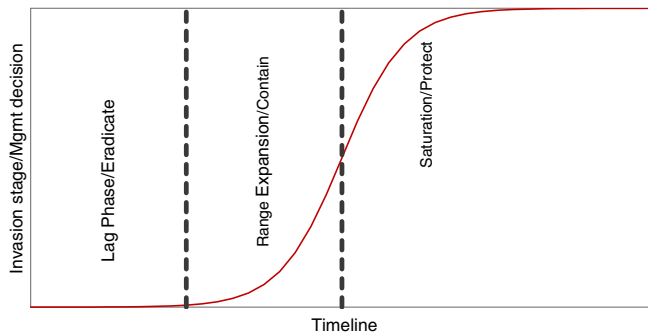


Figure 3. The hypothetical invasion curve depicted by a logistic growth function to determine effective management countermeasures.

dependent on the level of succession. All of these strategic phases will deploy tactical countermeasures to pace recruitment, limit dispersal, and preempt fecundity (Cacho et al. 2007; Hauser and McCarthy 2009; Hauser et al. 2016; Hester et al. 2010; Leung et al. 2010; Mehta et al. 2007). What is inherent to this process is the knowledge of life-history traits of the target species (propagule dispersal, persistence, mature fecundity, etc.).

Spatial ecology of seed dispersal is critical to understanding community dynamics, succession, and especially nonnative invasions (Clark et al. 1999; Murphy et al. 2008; Nathan and Muller-Landau 2000; Shigesada et al. 1995). The *M. calvescens* dispersal kernel created in the EMW (Figure 2A) was a leptokurtic distribution described by a first-order negative exponential function ($R^2 = 0.946$), characterized by a sharp central peak and fat-tail of rare, long-distance events (Clark et al. 1999; Nathan and Muller-Landau 2000). Ninety-nine percent of the recruitment observed was confined to 549 m, with the remaining 1% of recruitment events measured out to 1,636 m. Half of the recruitment was confined to 37.3 m of the presumed maternal sources (i.e., sharp central peak), denoting the possibility of unconsumed fruit drop with short-range dispersal aided by features of the landscape (e.g. slope, gravity, and hydrology; Murphy et al. 2008). Otherwise, we expect most dispersal to be facilitated by endozoochory of avian generalists consuming these small, fleshy fruits (ca. 6 mm) packed with even smaller seed (ca. 0.6 mm), where range distance is determined by gut retention or home range (Dennis and Westcott 2007; Meyer 1998; Murphy et al. 2008; Spotswood et al. 2012, 2013). There were 81 points with range distances extending beyond 2,000 m with a maximum distance of 7,738 m (unpublished data). Many of these were validated as stochastic, human-mediated events, but it does suggest that dispersal could extend beyond the maximum range distance used here. The dispersal kernel developed by Murphy et al. (2008) estimated a maximum dispersal range of 1,750 m in North Queensland, Australia. The EMW dispersal kernel matched with this kernel (root mean-square error [RMSE] = 0.007), where the largest residuals were at the central peak (unpublished data). The isotropic impact area in the EMW created by the maximum dispersal distance (i.e., 841 ha) is a conservative estimate. However, this homogenous display is independent of the landscape, where habitat, topography, and avifaunal behaviors may all contribute to actual distribution patterns (Murphy et al. 2008; Spotswood et al. 2013). In management decision making, this translates into substantial unknown risk and still obligates surveillance to the entire buffer, particularly in the fat-tail regions where autogamous *M. calvescens* present the greatest risk of

expansion into uninvaded areas (Hardesty et al. 2011; Murphy et al. 2008). Autogamy is a facultative trait for satellite pioneers to achieve reproductive success when isolated from cohorts (Baker 1965; Meyer 1998). Thus, it is justifiable to assume all propagules may establish and succeed to maturity within the kernel, autonomous of cohorts.

Physiological seed dormancy has been reported in several *Miconia* spp., including *M. calvescens* (Dalling et al. 1998; Ellison et al. 1993; Mendes-Rodrigues et al. 2010; Meyer 1994; Pearson et al. 2003; Silveira et al. 2013; Valio and Scarpa 2001). This has been translated to higher shade tolerance under forest canopy (i.e., lower red:far-red ratios), offering competitive advantages over other larger-seeded tropical species with longer seedbank persistence and higher germination rates under lower light conditions (Martinez-Ghersa and Ghersa 2006; Meyer 1994; Pearson et al. 2003). Seedbank persistence in the EMW was described by a first-order negative exponential function ($R^2 = 0.997$) with a 24% annual reduction, exhausting 99% of the propagule bank in ~17 yr (Figure 2B). This was highly congruent (RMSE = 0.0031) to the decay function of a seedbank study by Meyer and Malet (1997) and Meyer (2010). They showed propagules surviving after 16 yr, but decaying from > 4,300 seeds m^{-2} to 190 seeds m^{-2} , in that time period. Interestingly, Dalling et al. (1998) showed seedbank of native *Miconia argentea* (Sw.) DC. in Panama to have higher annual reductions at 70% to > 90% within 30 m from the nearest tree, attributing seed mortality to pathogenic fungi. The suitable habitats in Hawaii and Tahiti may be conferring added advantages to *M. calvescens* with a lack of herbivory, disease, and competition typically experienced in its native range (i.e., enemy release hypothesis; Keane and Crawley 2002). This measure of seedbank persistence does not explicitly account for stochastic events (e.g., microsite disturbances) that may shorten persistence, nor is the model's termination point irrefutable. For instance, it is plausible that a 30-yr data set would show recruitment beyond 20 yr. In spite of these limitations, this model still offers sound management guidance in projecting long-term strategy toward achieving extinction.

Life-history traits vary widely across species and also within a species across heterogeneous landscapes (Bedetti et al. 2011; LeRoux et al. 2008; Nathan and Muller-Landau 2000). Founder populations of *M. calvescens* in the Pacific and Australia are the result of minor, deliberate introductions displaying low genetic diversity and a lack of geographical structure, suggesting these naturalized invasions are closely related and possibly derive from the same maternal source (Hardesty et al. 2011; Le Roux et al. 2008). Apparently, this has not been an impediment to invasion success of *M. calvescens* in these different locations. Phenotypic plasticity is an important mechanism for apomictic populations with low genetic variability, such as *Miconia* spp. (Bedetti et al. 2011). The congruence of dispersal kernels in these disparate locations may be further supported by the small fruit phenotype and the similar generalist frugivory networks, that is, the red-vented bulbul (*Pycnonotus cafer* L.) in Tahiti and Hawaii or white eyes (*Zosterops* spp.) common in Hawaii, Tahiti, and Australia (Csurhes 1998; Spotswood et al. 2012). Heterogeneous environmental effects were determined to be stronger than genetic disposition in determining seedbank persistence of *M. ferruginata* DC. in Brazil (Mendes-Rodrigues et al. 2010). In this case, life-history traits expressed in the EMW are likely determined by the constitution of both species and habitat. The similarities of the corresponding research in Tahiti and Australia are invaluable to our confidence in research and management of *M. calvescens* in Hawaii.

A single *M. calvescens* satellite colonizing a new location can rapidly create large-scale and long-term impact on a landscape if succeeding to maturity. Eliminating satellite targets before they reach maturity (referred to as “juvenilizing” by Meyer et al. [2011]) is an effective form of landscape-level management. Figure 4A and B shows the population dynamics simulated in a stage matrix model of a new *M. calvescens* propagule bank managed at different harvest rates over time. Here, containment is simulated when harvest rates are equally replenished by mature fecundity ($\lambda = 1$). This model was closest to containment at a harvest rate of 0.696 ($\lambda = 0.997$), with one juvenile reaching maturity and replenishing the propagule bank every 4 yr. This model repeats these oscillating fecundity events for centuries beyond the scale of these figures (unpublished data). Slight shifts (\pm) in harvest rates from containment (0.695 and 0.697) depict the dramatic (sensitive) fluctuation between failure and eradication, albeit suboptimal. Failure ($\lambda = 1.38$), in this case, shows juvenile recruitment and maturity quickly outpacing harvest rates. Suboptimal eradication was closely coherent to containment for more than five decades ($\lambda = 0.995$) and then began exhausting the propagule bank ($\lambda = 0.76$) until extinction at the 80th year. This resulted in 2,577 juvenile added recruits being harvested over that period, in excess of the initial propagule bank ($x_i = 320$). Optimal eradication was achieved at the lowest harvest rate (0.717), with all 320 juvenile recruits eliminated before reaching maturity ($\lambda = 0.76$) and extinction occurring at the 24th year. All harvest rates in excess of optimal have the same outcomes (e.g., 0.999; Figure 4A and B), with only diminishing residency of juveniles. It should be noted that presumed containment in this model is only temporal, while maturity occurring randomly within the dispersal kernel would result in range expansion nullifying spatial containment (Cacho et al. 2008; Moody and Mack 1988; Panetta 2007; Shigesada et al. 1995). Optimal and excess harvest rates have the shortest time to extinction and mitigate range expansion.

Cacho et al. (2007) describe the mortality factor as a product of target detectability and treatment efficacy. As described earlier, harvest rates (i.e., mortality factor) are largely dictated by detection. Moreover, ungerminated propagules are inconspicuous to search efforts. Hence, the path to exhausting the propagule bank is determined by recruitment rate derived from the persistence

kernel (see Figure 2B) and search effort to adequately detect targets. In the model, a new mature disperses 320 first-generation progeny across an 841-ha isotropic area. The optimal harvest rate searched this area and exhausted this propagule bank in the 24th year, with the least search effort at 29.6 h (Figure 5A and B). Ninety percent of that total effort was expended within the first 9 yr. Excess search effort exhausted the propagule bank at the same time, but with increasing effort up to 161.3 h at a harvest rate of 0.999; more than a 5-fold increase. Suboptimal harvest rates greatly compounded the efforts, with every mature *M. calvescens* augmenting the propagule bank and extending the time to extinction. Here, the lowest suboptimal rate of 0.697 required 254.7 h of search effort to exhaust the compounded propagule bank; almost a 9-fold increase. Failed and containment harvest rates required search efforts in perpetuity and were greater than the extinction points for suboptimal and excess harvest rates. While it is difficult or impractical to optimally manage the extinction of an incipient propagule bank over time, this model suggests that search effort is less sensitive to excess harvest rates and is least likely to fail in exhausting the propagule bank and, furthermore, will mitigate range expansion.

Our model arbitrarily assumes an *M. calvescens* plant reaching first maturity and dispersing a small number of propagules uniformly across suitable habitat. However, it is often possible to encounter older mature plants that have already dispersed multiple generations of propagules (Meyer 1998) or for propagules to be deposited in microsites that influence germination and growth (Mendes-Rodrigues et al. 2010). We considered these scenarios with the output sensitivity of time to extinction and optimal harvest rate against variations of propagule bank size and annual recruitment rate inputs (Figure 6A and B). Time to extinction was proportional to propagule bank size and inversely proportional to recruitment rate. Optimal harvest rate was also proportional to propagule bank size and annual recruitment rate.

Hester et al. (2010) determined treatment cost to be negligible in comparison with search cost with Australia’s *M. calvescens* management strategies. The costs of controlling a weed invasion are influenced by a number of factors, including plant detectability, area accessibility, and methods used (Cacho et al. 2007; Hester et al. 2010). The HBT treatment platform has greatly enhanced helicopter surveillance of inaccessible areas in the EMW (Leary et al. 2014). An isotropic progeny density raster was created with annular rings derived from the percentiles of the leptokurtic dispersal kernel (Figure 7A). Pixel area costs were

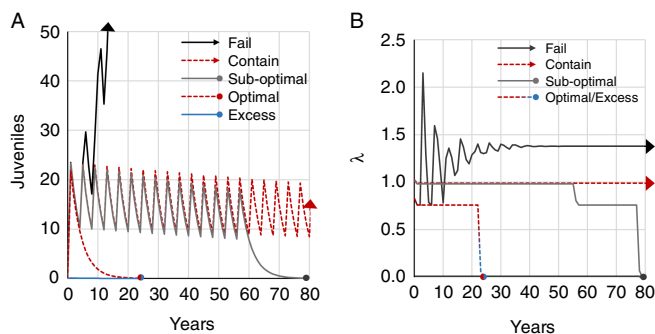


Figure 4. (A) Progeny recruitment derived from a single satellite *Miconia calvescens* created by the stage matrix model depicting population dynamics over time where harvest rates proportional to recruitment fail (black arrow; 0.695), contain (red arrow; 0.696), suboptimally eradicate (gray point; 0.697), optimally eradicate (red point; 0.717), and excessively eradicate (blue point; 0.999). (B) Growth rates (λ) over time leading to stable stage distribution, where $\lambda \approx 1.0$ is effectively contained at the harvest rate 0.696 (red arrow), while $\lambda > 1$ shows positive growth beyond containment (black arrow) and $\lambda < 1$ leads to extinction (gray, red, and blue points), where 0.717 is the optimal harvest rate for achieving extinction without any progeny reaching maturity. Note: arrows depict continuation beyond the scale of the graph.

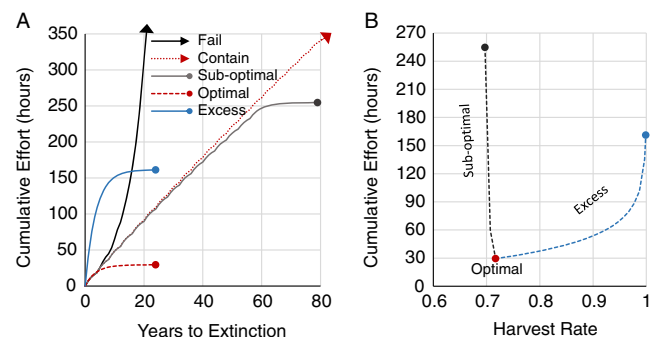


Figure 5. (A) The cumulative effort over time where harvest rates proportional to recruitment fail (black arrow; 0.695), contain (red arrow; 0.696), suboptimally eradicate (gray point; 0.697), optimally eradicate (red point; 0.717), and excessively eradicate (blue point; 0.999). (B) The cumulative effort to achieve eradication across harvest rates. Note: arrows depict continuation beyond the scale of the graph.

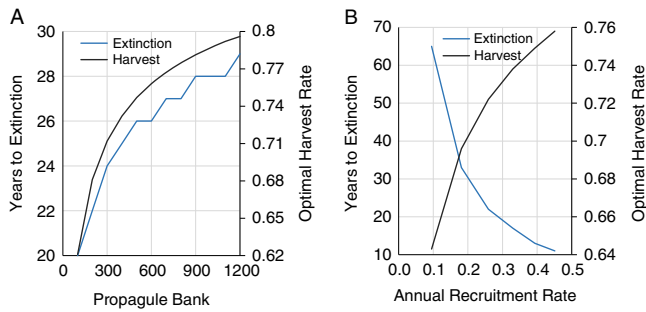


Figure 6. Model responses in time to extinction (years) and optimal harvest rate dependent on (A) propagule bank size and (B) annual recruitment rate derived from a first-order decay function.

density dependent, ranging widely from US\$329.27 nearest the maternal source to US\$0.42 out to the maximum range distance (Figure 7B). The total variable cost coinciding with the optimal search effort and elimination of all progeny was > US\$41,600. The most distant 1% of progeny occupy the lowest-cost pixel areas but required 88% of the effort to search for and eliminate (Figure 7C). Thus, 75% of the total cost was obligated to completing this task, with a majority of this effort identifying where targets are not located (i.e., p_{nd}). Resources dedicated to finding remote, incipient populations can reduce future impact and avoid future cost to protect an area of interest (Mehta et al. 2007). Here, we further acknowledge the value of surveillance protecting the landscape by confirming nondetection as a measurable probability reducing uncertainty.

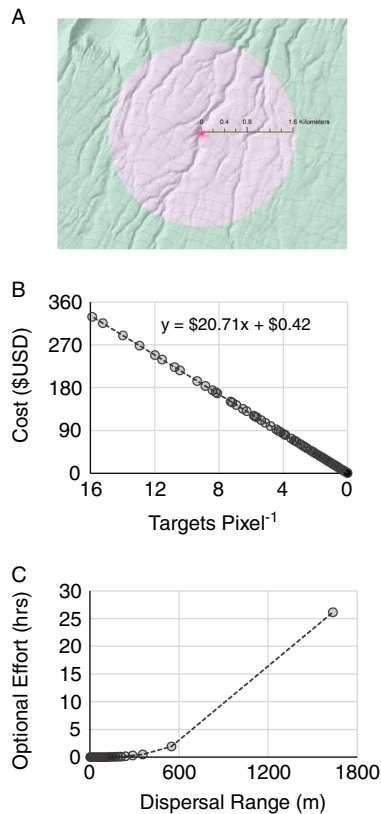


Figure 7. (A) Two-dimensional pixel raster of the dispersal kernel (i.e., impact; pink), (B) variable cost per pixel (i.e., 100 m²), and (C) optimal search effort to detect progeny across the dispersal kernel. Note: the points are percentiles of the probability density function.

The variable cost outputs were inversely proportional to sub-optimal harvest rates and proportional to excess harvest rates (Figure 8A). Hence, the optimal harvest rate has the lowest total variable cost. Cost appears less sensitive to excess rates, where the highest excess harvest rate 0.999 was more economical than suboptimal harvest rates < 0.70. More to the point, the suboptimal harvest rate of 0.71, just below optimal, was equitable to the excess harvest rate of 0.87. Similar to the optimal harvest rate, variable costs were proportional to propagule bank size and annual recruitment rate (Figure 8B and C) but appear to be much more sensitive to dispersal range (i.e., area expansion) (Figure 8D). This offers a further preference for exhausting the propagule bank with excess harvest rates over suboptimal, where life history and local occupation are uncertain. We further show that investments below optimal would fail to eradicate, warranting a strategy reduction with more attainable goals or possibly doing nothing (Cacho et al. 2008).

Many model studies support the current convention of prioritizing the elimination of incipient populations over higher-density infestations (Mehta et al. 2007; Moody and Mack 1988; Taylor and Hastings 2004), including outside-in containment in lieu of eradication when resources become limited (Cacho et al. 2008; Chadès et al. 2011; Leung et al. 2010). Cacho et al. (2008) modeled the optimization of a control strategy with two switching points: (1) transition from eradication to containment and (2) transition from containment to terminating control strategy. Here, we acknowledge that eradication or comprehensive containment of *M. calvescens* invading the EMW is an unattainable goal with the current resources. However, we also recognize that termination of the control program would be detrimental to the remaining uninvaded EMW. Instead, we infer a third phase of management, switching from containment to protecting assets that could have environmental, cultural, or economic significance (Downey et al. 2011; Hobbs and Humphries 1995). From 2012 to 2016, HBT helicopter operations were conducted under an assumed containment strategy. In this approach, only 28% of operations were unintentionally invested in the first-priority watershed asset, while 21% and 51% of operations were relegated to second- and third-priority assets, respectively. This was

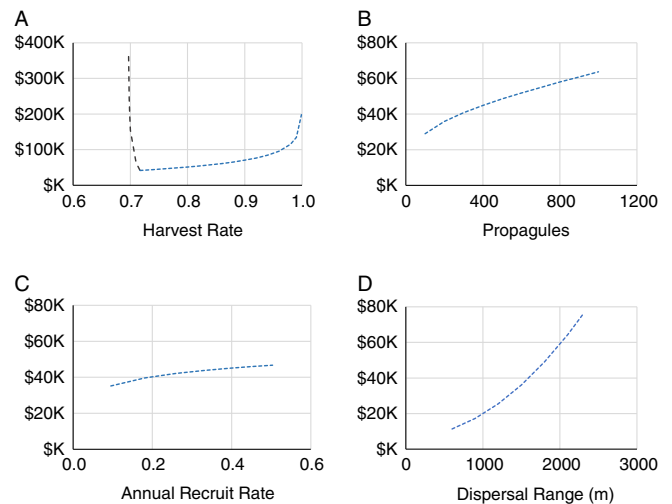


Figure 8. Output response sensitivity of variable cost to locally eradicate an incipient population based on inputs: (A) harvest rate, (B) propagule bank size, (C) annual recruitment rate, and (D) dispersal range. Note: unless variable, $x_1 = 320$ propagules, annual recruitment rate is 0.24, dispersal range is 1,636 m, and the harvest rate is optimal.

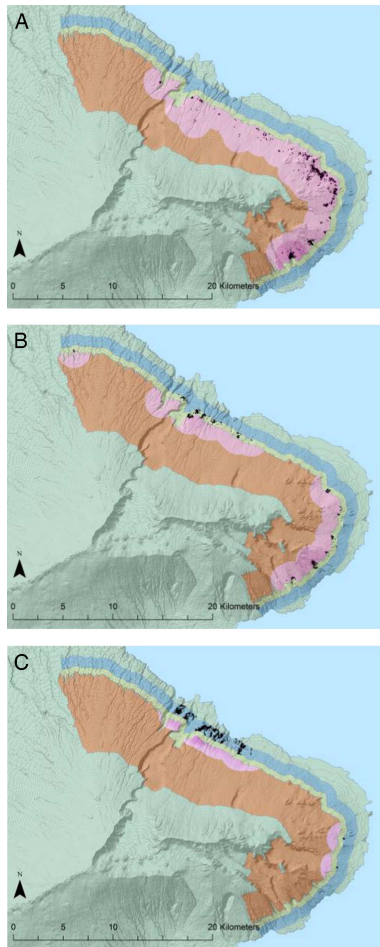


Figure 9. Impact mitigated within the first-priority watershed asset (red zone between 400 and 1,200 m a.s.l.) by efforts to remove *Miconia calvescens* from the first- (A; red), second- (B; yellow), and third-priority (C; blue) asset areas. Note contour line intervals at 30 m a.s.l. (i.e., 100 feet a.s.l.).

comparable to the number of *M. calvescens* targets eliminated in these areas: 25%, 18%, and 57%, respectively. In retrospect, direct management within the first-priority watershed asset resulted in 42% of the total area receiving some level of protection (Figure 9A), while secondary and tertiary management only offered protection to 22% and 6% of the first-priority area, respectively (Figure 9B and C). The highest cost investments were recorded in the third-priority buffer from 2012 to 2016, exceeding the average cost of investments in the first-priority area more than 2-fold (Figure 10A). Direct management within the first-priority watershed asset avoided the most costs, due to both the larger area protected and the level of impact in the vicinity of the target locations (Figure 10B). Management within the first-priority watershed asset avoided more than US\$184 in future management costs for every US\$1 invested, while investments in second- and third-priority areas contributed more modest returns of US\$27 and US\$3, respectively (Figure 10C). Because these operations were likely undersupported in meeting a comprehensive containment objective, we emphasize how these ratios may justify a transition to protecting the highest priority watershed asset as a future strategy.

In this case study, eradication of satellite *M. calvescens* occupying first-priority watersheds is justified by the highest possible

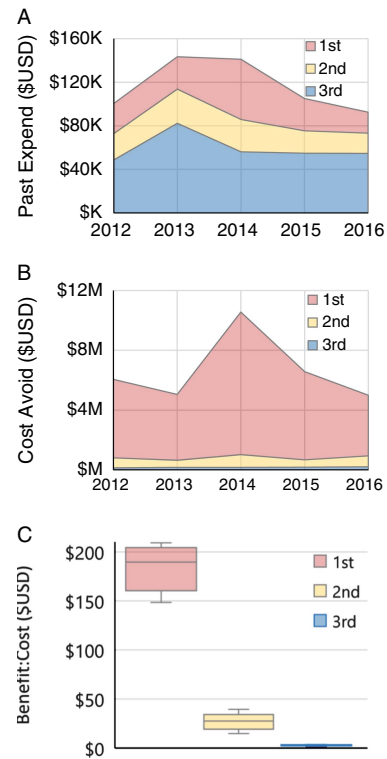


Figure 10. (A) Past expenditures in each of the priority areas from 2012 to 2016 herbicide ballistic technology operations with (B) costs avoided in the first-priority asset area from each of those investments resulting in (C) mean annual cost-effectiveness derived from the avoided:expense ratio. The error bars are \pm standard deviations.

return in designated asset protection. This is effectively the inverse of the “outside-in” containment strategy described earlier; instead, an “inside-out” approach centralizes active management within the asset boundary and radiates out with an exclusion front demarcated from the boundary out to dispersal range of *M. calvescens*. Inherently, the high returns in asset protection will diminish with excess effort (see Figure 4). Furthermore, protection over time will also eventually be compromised with encroachment of unchecked populations breaching the exclusion zone. By digressing to a defensive last stand, this trade-off is unavoidable and may lead to divestment and eventual program termination (Cacho et al. 2008; Rejmánek and Pitcairn 2002). On the other hand, there are also, yet to be fully realized limits of suitable habitat and the impact that could be imposed on this priority area. Pouteau et al. (2011) predicted precipitation, elevation (i.e., temperature), and slope steepness as major variables explaining the *M. calvescens* distribution in French Polynesia; the EMW shares many of these same conditions. We predict that a *M. calvescens* suitable habitat model for the EMW will further economize an asset protection strategy by refining optimal investment strategies and measures of cost-effectiveness in accordance with the likelihood and magnitude of impact on the landscape.

This history of *M. calvescens* management in the EMW is a case study of valiant management efforts originally intending to eradicate, but ultimately operating with insufficient support (Meyer et al. 2011). Moreover, current support has also become insufficient to contain the invasion front spread across a majority of the EMW below 1,000 m a.s.l. Thus, scaling management to

local eradication in smaller, priority asset areas may be warranted in protecting critical ecosystem services vulnerable to *M. calvescens* incursion. Here, we have developed a spatiotemporal model that measures management effort required to eliminate *M. calvescens* satellites before reaching maturity, extinguishing incipient populations. Cost-effectiveness is determined by the avoidance of future cost obligations to eliminate future progeny in newly impacted areas. Future research is needed to further develop a spatially explicit priority system for the EMW that values ecosystem services associated with this forested watershed and a suitability model that helps us better predict life-history traits (e.g., persistence, maturity, and fecundity) influenced by a variety of environmental factors in this heterogeneous system.

Acknowledgments. We appreciate the comments and edits by Adam Radford and Jeremy Gooding and the invaluable directions offered by the anonymous reviewers. This study was supported in part by the USDA Forest Service Special Technology Development Program Award R5-2012-01, USDA Hatch Act Formula Grant project 132H, Hawaii Invasive Species Council Research and Technology Grant Program for FY14-17, the Maui County Department of Water Supply, and the Office of Economic Development via collaboration with the Maui Invasive Species Committee. Major funding and data archives for this management program were provided by the National Park Service, Haleakala National Park, and the Pacific Island Exotic Plant Management Team. We thank Helen Murphy for sharing data to compare dispersal kernels. No conflicts of interest have been declared.

Supplementary material. To view supplementary material for this article, please visit <http://dx.doi.org/10.1017/inp.2018.26>

References

- Baker HG (1965) Characteristics and modes of origin of weeds. Pages 147–172 in Baker HG, Stebbins GL, eds. *Genetics of Colonizing Species*. New York: Academic Press
- Bedetti CS, Aguiar DB, Jannuzzi MC, Moura MZ, Silveira FA (2011) Abiotic factors modulate phenotypic plasticity in an apomictic shrub [*Miconia albicans* (SW.) Triana] along a soil fertility gradient in a Neotropical savanna. *Aust J Bot* 59:274–282
- Buhle ER, Margolis M, Ruesink JL (2005) Bang for buck: cost-effective control of invasive species with different life histories. *Ecol Econ* 52:355–366
- Burnett K, D'Evelyn S, Kaiser B, Nantamanasikarn P, Roumasset J (2008) Beyond the lamppost: optimal prevention and control of the brown tree snake in Hawaii. *Ecol Econ* 67: 66–74
- Burnett K, Pongkijvorasin S, Roumasset J (2012) Species invasion as catastrophe: the case of the brown tree snake. *Environ Resour Econ* 51:241–254
- Cacho OJ, Hester S, Spring D (2007) Applying search theory to determine the feasibility of eradicating an invasive population in natural environments. *Aust J Agric Resour Econ* 51:425–443
- Cacho OJ, Wise RM, Hester SM, Sinden JA (2008) Bioeconomic modeling for control of weeds in natural environments. *Ecol Econ* 65: 559–568
- Carlton J (2003) *Invasive Species: Vectors and Management Strategies*. Washington DC: Island Press
- Chadès I, Martin TG, Nicol S, Burgman MA, Possingham HP, Buckley YM (2011) General rules for managing and surveying networks of pests, diseases, and endangered species. *Proc Natl Acad Sci USA* 108:8323–8328
- Chippendale JF (1991) The Potential Returns to Research into Rubber Vine (*Cryptostegia grandiflora* R.Br.) in North Queensland. Master of agricultural studies thesis. Queensland, Australia: University of Queensland. 93 p
- Clark JS, Silman M, Kern R, Macklin E, HilleRisLambers J (1999) Seed dispersal near and far: patterns across temperate and tropical forests. *Ecology* 80:1475–1494
- Cook DC, Thomas MB, Cunningham SA, Anderson DL, De Barro PJ (2007) Predicting the economic impact of an invasive species on an ecosystem service. *Ecol Appl* 17:1832–1840
- Csurhes SM (1998) *Miconia calvescens*, a potentially invasive plant in Australia's tropical and sub-tropical rainforests. In Proceedings of the First Regional Conference on *M. calvescens* Control. Papeete, Tahiti, French Polynesia. Gouvernement de Polynésie française/University of Hawai'i at Manoa/Centre ORSTOM de Tahiti
- Dalling JW, Swaine MD, Garwood NC (1998) Dispersal patterns and seed bank dynamics of pioneer trees in moist tropical forest. *Ecology* 79:564–578
- Dennis AJ, Westcott DA (2007) Estimating dispersal kernels produced by a diverse community of vertebrates. Pages 201–228 in Dennis AJ, Schupp E, Westcott DA, eds. *Seed Dispersal: Theory and Its Application in a Changing World*. Wallingford, Oxfordshire, UK: CAB International
- Downey PO, Johnson SB, Virtue JG, Williams PA (2010) Assessing risk across the spectrum of weed management. *CAB Reviews: Perspectives in Agriculture, Veterinary Science, Nutrition and Natural Resources* 5, 10.1079/PAVSNR20105038
- Eiswerth ME, Van Kooten GC (2002) Uncertainty, economics, and the spread of an invasive plant species. *Am J Agric Econ* 84:1317–1322
- Ellison AM, Denslow JS, Loiselle BA (1993) Seed and seedling ecology of Neotropical Melastomataceae. *Ecology* 74:1733–1749
- Finnoff D, Shogren JF, Leung B, Lodge D (2005) The importance of bioeconomic feedback in invasive species management. *Ecol Econ* 52:367–381
- Frid L, Knowler D, Myers JH, Scott L, Murray C (2013) A multi-scale framework for evaluating the benefits and costs of alternative management strategies against invasive plants. *J Environ Plann Manag* 56:412–434
- Gagné BH, Loope LL, Medeiros AC, Anderson SJ (1992) *Miconia calvescens*: a threat to native forests of the Hawaiian Islands. *Pac Sci* 46:390–391
- Giambelluca TW, Sutherland RA, Nanko K, Mudd RG, Ziegler AD (2009) Effects of *Miconia* on hydrology: a first approximation. In Loope LL, Meyer JY, Hardesty BY, Smith CW, eds. *Proceedings of the International Miconia Conference*, Keanae, Maui, Hawaii, USA, May 4–7 2009. Honolulu, HI: Maui Invasive Species Committee and Pacific Cooperative Studies Unit, University of Hawaii at Manoa. 7 p
- Gingerich SB (2005) Median and Low-Flow Characteristics for Streams under Natural and Diverted Conditions, Northeast Maui, Hawaii. Denver, CO: U. S. Department of the Interior, U.S. Geological Survey Scientific Investigations Report 2004-5262
- Hardesty BD, Metcalfe SS, Westcott DA (2011) Persistence and spread in a new landscape: dispersal ecology and genetics of *Miconia* invasions in Australia. *Acta Oecol* 37:657–665
- Hauser CE, Giljohann KM, Rigby M, Herbert K, Curran I, Pascoe C, Moore JL (2016) Practical methods for delimiting a plant invasion. *Divers Distrib* 22:136–147
- Hauser CE, McCarthy MA (2009) Streamlining “search and destroy”: cost-effective surveillance for invasive species management. *Ecol Lett* 12:683–692
- Hester SM, Brooks SJ, Cacho OJ, Panetta FD (2010) Applying a simulation model to the management of an infestation of *Miconia calvescens* in the wet tropics of Australia. *Weed Res* 50:269–279
- Hobbs RJ, Humphries SE (1995) An integrated approach to the ecology and management of plant invasions. *Conserv Biol* 9:761–770
- Horan RD, Perrings C, Lupi F, Bulte EH (2002) Biological pollution prevention strategies under ignorance: the case of invasive species. *Am J Agric Econ* 84:1303–1310
- Keane RM, Crawley MJ (2002) Exotic plant invasions and the enemy release hypothesis. *Trends Ecol Evol* 17:164–170
- Keller RP, Lodge DM, Lewis MA, Shogren JF, eds (2009) *Bioeconomics of Invasive Species: Integrating Ecology, Economics, Policy, and Management*. New York: Oxford University Press. 298 p
- Kerr N, Baxter PW, Salguero-Gómez R, Wardle GM, Buckley YM (2016) Prioritizing management actions for invasive populations using cost, efficacy, demography and expert opinion for 14 plant species world-wide. *J Appl Ecol* 53:305–316
- Klein EK, Bontemps A, Oddou-Muratorio S (2013) Seed dispersal kernels estimated from genotypes of established seedlings: does density-dependent mortality matter? *Methods Ecol Evol* 4:1059–1069
- Leary J, Mahnken BV, Cox LJ, Radford A, Yanagida J, Penniman T, Duffy DC, Gooding J (2014) Reducing nascent miconia (*Miconia calvescens*) patches with an accelerated intervention strategy utilizing herbicide ballistic technology. *Invasive Plant Sci Manag* 7:164–175

- Le Roux JJ, Wiczorek AM, Meyer JY (2008) Genetic diversity and structure of the invasive tree *Miconia calvescens* in Pacific islands. *Divers Distrib* 14:935–948
- Leung B, Cacho O, Spring D (2010) Searching for non-indigenous species: rapidly delimiting the invasion boundary. *Divers Distrib* 16:451–460
- Leung B, Lodge D, Finnoff D, Shogren J, Lewis MA, Lamberti G (2002) An ounce of prevention or a pound of cure: bioeconomic risk analysis of invasive species. *Proc R Soc Lond B Biol Sci* 269:2407–2413
- Loope LL, Medeiros AC (1994) Impacts of biological invasions on the management and recovery of rare plants in Haleakala National Park, Maui, Hawaiian Islands. Pages 143–158 in Bowles M, Whelan CJ, eds. *Restoration of Endangered Species*. Cambridge: Cambridge University Press
- Lowe S, Browne M, Boudjelas S, De Poorter M (2000) 100 of the World's Worst Invasive Alien Species: A Selection from the Global Invasive Species Database. Volume 12. Auckland: Invasive Species Specialist Group
- Martinez-Ghersa MA, Ghersa CM (2006) The relationship of propagule pressure to invasion potential in plants. *Euphytica* 148:87–96
- Medeiros AC, Loope LL, Conant P, McElvaney S (1997) Status, ecology, and management of the invasive plant, *Miconia calvescens* DC (Melastomataceae) in the Hawaiian islands. *Bishop Museum Occasional Papers* 48:23–36
- Medeiros AC, Loope LL, Hobdy RW (1995) Conservation of cloud forests in Maui County (Maui, Moloka 'i, and Lana 'i), Hawaiian Islands. Pages 223–233 in Hamilton LS, Juvik JO, Scatena FN, eds. *Tropical Montane Cloud Forests*. New York: Springer
- Mehta SV, Haight RG, Homans FR, Polasky S, Venette RC (2007) Optimal detection and control strategies for invasive species management. *Ecol Econ* 61:237–245
- Mendes-Rodrigues C, Araújo FPD, Barbosa-Souza C, Barbosa-Souza V, Ranal MA, Santana DGD, Oliveir PE (2010) Multiple dormancy and maternal effect on *Miconia ferruginata* (Melastomataceae) seed germination, Serra de Caldas Novas, Goiás, Brazil. *Braz J Bot* 33:92–105
- Meyer JY (1994) Mécanismes d'invasion de "*Miconia calvescens* DC." en Polynésie française Doctoral dissertation. Montpellier, France: Montpellier 2. 104 p
- Meyer JY (1998) Observations on the reproductive biology of *Miconia calvescens* DC (Melastomataceae), an alien invasive tree on the island of Tahiti (South Pacific Ocean). *Biotropica* 30:609–624
- Meyer JY (2010) The *Miconia* saga, 20 years of study and control in French Polynesia (1988–2008). In Loope LL, Meyer JY, Hardesty BY, Smith CW, eds. *Proceedings of the International Miconia Conference*, Keanae, Maui, Hawaii, USA, May 4–7 2009. Honolulu, HI: Maui Invasive Species Committee and Pacific Cooperative Studies Unit, University of Hawaii at Manoa. 19 p
- Meyer JY, Florence J (1996) Tahiti's native flora endangered by the invasion of *Miconia calvescens* DC. (Melastomataceae). *J Biogeogr* 23:775–781
- Meyer JY, Loope LL, Goarant AC (2011) Strategy to control the invasive alien tree *Miconia calvescens* in Pacific islands: eradication, containment or something else. Pages 91–96 in Veitch CR, Clout MR, and Towns DR, eds. *Island Invasives: Eradication and Management*. Gland, Switzerland: IUCN
- Meyer JY, Malet JP (1997) Study and management of the alien invasive tree *Miconia calvescens* DC (Melastomataceae) in the islands of Raiatea and Tahaa (Society Islands, French Polynesia): 1992–1996. Honolulu, HI: University of Hawaii Cooperative National Park Resources Studies Unit Technical Report 111
- Moody ME, Mack RN (1988) Controlling the spread of plant invasions: the importance of nascent foci. *J Appl Ecol* 25:1009–1021
- Murphy HT, Hardesty BD, Fletcher CS, Metcalfe DJ, Westcott DA, Brooks SJ (2008) Predicting dispersal and recruitment of *Miconia calvescens* (Melastomataceae) in Australian tropical rainforests. *Biol Invasions* 10:925–936
- Nanko K, Giambelluca TW, Sutherland RA, Mudd RG, Nullet MA, Ziegler AD (2015) Erosion potential under *Miconia calvescens* stands on the Island of Hawaii. *Land Degrad Dev* 26:218–226
- Nanko K, Watanabe A, Hotta N, Suzuki M (2013) Physical interpretation of the difference in drop size distributions of leaf drips among tree species. *Agric For Meteorol* 169:74–84
- Nathan R, Muller-Landau HC (2000) Spatial patterns of seed dispersal, their determinants and consequences for recruitment. *Trends Ecol Evol* 15:278–285
- Olson LJ, Roy S (2002) The economics of controlling a stochastic biological invasion. *Am J Agric Econ* 84:1311–1316
- Panetta FD (2007) Evaluation of weed eradication programs: containment and extirpation. *Divers Distrib* 13:33–41
- Pimentel D, ed (2011) *Biological Invasions: Economic and Environmental Costs of Alien Plant, Animal, and Microbe Species*. Boca Raton, Florida: CRC Press. 463 p
- Pimentel D, Zuniga R, Morrison D (2005) Update on the environmental and economic costs associated with alien-invasive species in the United States. *Ecol Econ* 52:273–288
- Pouteau R, Meyer JY, Stoll B (2011) A SVM-based model for predicting distribution of the invasive tree *Miconia calvescens* in tropical rainforests. *Ecol Model* 222:2631–2641
- Rejmánek M, Pitcairn MJ (2002) When is eradication of exotic pest plants a realistic goal? Pages 249–253 in Veitch CR, Clout MN, eds. *Turning the Tide: The Eradication of Invasive Species*. Gland, Switzerland, IUCN
- Rodriguez R III, Jenkins DM, Leary JJ, Mahnken BV (2016) Herbicide ballistic technology: spatial tracking analysis of operations characterizing performance of target treatment. *Trans ASABE* 59(3):803–809.
- Shade PJ (1999) Water Budget of East Maui, Hawaii. U.S. Geological Survey Investigations Report No. 98-4159
- Shigesada N, Kawasaki K, Takeda Y (1995) Modeling stratified diffusion in biological invasions. *Am Nat* 146:229–251
- Silveira FA, Ribeiro RC, Soares S, Rocha D, Oliveira C (2013) Physiological dormancy and seed germination inhibitors in *Miconia* (Melastomataceae). *Plant Ecol Evol* 146:290–294
- Spotswood EN, Meyer JY, Bartolome JW (2012) An invasive tree alters the structure of seed dispersal networks between birds and plants in French Polynesia. *J Biogeogr* 39:2007–2020
- Spotswood EN, Meyer JY, Bartolome JW (2013) Preference for an invasive fruit trumps fruit abundance in selection by an introduced bird in the Society Islands, French Polynesia. *Biol Invasions* 15:2147–2156
- Taylor CM, Hastings A (2004) Finding optimal control strategies for invasive species: a density-structured model for *Spartina alterniflora*. *J Appl Ecol* 41:1049–1057
- Valio IF, Scarpa FM (2001) Germination of seeds of tropical pioneer species under controlled and natural conditions. *Braz J Bot* 24:79–84
- van Wilgen BW, Fill JM, Baard J, Cheney C, Forsyth AT, Kraaij T (2016) Historical costs and projected future scenarios for the management of invasive alien plants in protected areas in the Cape Floristic Region. *Biol Conserv* 200:168–177
- Wagner V, Antunes PM, Irvine M, Nelson CR (2017) Herbicide usage for invasive non-native plant management in wildland areas of North America. *J Appl Ecol* 54:198–204