

# THE BRITISH JOURNAL OF PSYCHIATRY

Volume 143

Published monthly

OCTOBER 1983

Founded in 1853 as the *Asylum Journal* and known as the *Journal of Mental Science*  
from 1855 to 1963.

---

---

EDITOR

J. L. Crammer

ASSOCIATE EDITORS

Martin Roth     Kenneth Rawnsley

ASSISTANT EDITORS

Sidney Crown  
John Cutting  
Gaius Davies  
Hugh Freeman

Alan Kerr  
Margaret Little  
Julian Leff  
Andrew C. Smith

Philip Snaith  
William Spry  
Peter Tyrer  
Gregor Wilkinson

EDITORIAL MANAGEMENT

Jacqueline Yates

ASSISTANT FOR THE BULLETIN

Alison Campbell

---

---

Correspondence, manuscripts, books for review, for both the *Journal* and the *Bulletin* should be addressed to the Editor, 17 Belgrave Square, London SW1X 8PG (Tel 01-235 8857). See inside front cover for further instructions.

Advertising enquiries, correspondence and copy should be addressed to Mr. Peter T. Mell, Advertisement Manager, PTM Professional Publications Ltd, 282 High Street, Sutton, Surrey SM1 1PQ (Tel 01-642 0162 PBX).

Subscriptions for non-members of the College are payable directly to the printers, Headley Brothers Ltd, to whom all queries about missing or faulty copies should be addressed within six months of publication and who also supply on order Special Publications and Gaskell Books.

**Annual subscription rates 1983 (12 issues post free)**

Inland: Institutions £65.00; Individuals £55.00

Overseas: Institutions £90.00, US\$200.00; Individuals £75.00, US\$165.00

Single copies of the Journal, £6.00, US\$12.00 (post free).

**Bargain: Special American private subscription \$45.00** for 12 issues post free, to personal subscribers affirming the Journal is for their own use and naming the institution to which they belong and which already subscribes at the institutional rate. For residents of North America only.

**USA Mailing Agents**, Expeditors of the Printed Word Ltd., 527 Madison Avenue, Suite 1217, New York, NY 10022. 2nd Class postage paid at New York City, NY. (USPS No. 536-870).

**Back issues** published in 1982 may be purchased from Headley Brothers Ltd and all previous issues from William Dawson & Sons Ltd, Cannon House, Folkestone, Kent, England (Tel 0303 57421).

Printed by Headley Brothers Ltd, Ashford, Kent TN24 8HH, England (Tel 0233 23131).

© 1983 THE ROYAL COLLEGE OF PSYCHIATRISTS

# The Retreat, York

## for Psychiatric Illnesses

Founded in 1792 by the Quaker, William Tuke, who established the tradition of concern for patients as individuals The Retreat is a 200-bedded private registered nursing home surrounded by extensive grounds on the outskirts of the historic City of York. It is easily reached by rail and motorways.

Care and treatment is offered for all types of psychiatric illness on the short or long term in a sympathetic and friendly atmosphere. Patients suffering from neuroses, psychoses, alcoholism and dementia are treated by the full-time consultant psychiatrists in surroundings suitable for their individual needs. Outpatient facilities are available by appointment with the consultant medical staff.

The Nursing Home is a registered charity and is able to offer inclusive care in shared accommodation from £27.00 per day or in single rooms at slightly increased charge. The Nursing Home is recognised by the main private patient schemes.

**For further details apply to The Medical Director, The Retreat, York YO1 5BN (Telephone 0904 412551).**

### *Behavioural Medicine*

*Guest Editors: Andrew Mathews & Andrew Steptoe*

*Invited review* — P. Ley. Satisfaction, compliance and communication

M. Johnston. Recognition of patients' worries by nurses and by other patients

C. Brewin & C. Bradley. Perceived control and the experience of childbirth

V. Ridgeway & A. Mathews. Psychological preparation for surgery: A comparison of methods

*Invited review* — D. W. Johnston. Behavioural treatment in the reduction of coronary risk factors:

Type A behaviour and blood pressure

H.-D. Basler, U. Brinkmeier, K. Buser, K.-D. Haehn & R. Mölders-Kober. Psychological group treatment of essential hypertension in general practice

A. Steptoe, D. Melville & A. Ross. Essential hypertension and psychological functions

*Invited review* — W. E. Fordyce. A behavioural perspective on chronic pain

S. J. Linton. A critical review of behavioural treatments for chronic benign pain other than headache

A. E. Reading, B. S. Everitt & C. M. Sledmere. The McGill pain questionnaire

W. H. Redd. Behavioural analysis and control of psychosomatic symptoms of patients receiving intensive cancer treatment

Pp. 112 (approx.) December 1982 cased £5.95 (US\$11.95)

*Behavioural Medicine* will also form Part 4 of the *British Journal of Clinical Psychology*, edited by David A. Shapiro (MRC/SSRC Social & Applied Psychology Unit, University of Sheffield).

Price for volume 21 (4 issues) £25.50 (US\$54.00); volume 22 (1983) £30.00 (US\$64.50)

**The British Psychological Society**

The Distribution Centre, Blackhorse Road, Letchworth, Herts SG6 1HN, UK



## DSM-III Available Worldwide

**International Perspectives on DSM-III**  
 Edited by Robert L. Spitzer, M.D.;  
 Janet B. W. Williams, D.S.W.; and  
 Andrew E. Skodol, M.D.

*International Perspectives on DSM-III*  
 provides an enlightening compilation of  
 pro and con views of the revolutionary  
 classification system presented in  
*Diagnostic and Statistical Manual*

*of Mental Disorders (Third Edition)*  
 (DSM-III).

To order your *International Per-*  
*spectives on DSM-III* and other books,  
 complete and mail the following order  
 form to:



Order Department  
 1400 K Street, N.W.  
 Washington, D.C. 20005  
 U.S.A.

Qty.	Title	Price	Amount
	International Perspectives on DSM-III. #48-017-3 (Casebound)	U.S. \$40.00	
	Diagnostic and Statistical Manual of Mental Disorders, Third Edition. #42-041-6 (Casebound) #42-042-4 (Paperback)	U.S. \$40.00 U.S. \$32.00	
	DSM-III Debate (Two 1-hour cassette tapes) #AT-037-2	U.S. \$21.00	
	Quick Reference to DSM-III. #42-043-2	U.S. \$16.00	
	DSM-III Case Book. #42-051-3 (Paperback)	U.S. \$22.00	
Please circle method of delivery desired:		Shipping/handling via surface mail	\$ 5.50
		Shipping/handling via Air Mail	\$15.00
		<b>TOTAL</b>	

**ALL ORDERS MUST BE PREPAID AND IN UNITED STATES FUNDS.**

- I have enclosed a check (payable to "American Psychiatric Press, Inc.")  
 Charge my:  MasterCard  VISA

Account Number \_\_\_\_\_

Expiration Date \_\_\_\_\_

Signature \_\_\_\_\_

Name \_\_\_\_\_

Address \_\_\_\_\_

Country \_\_\_\_\_ V-33-O

## Managing the Mind The Psychosocial Matrix of Psychiatry

**A study in the development of medical psychology in early 19th century Britain**

MICHAEL DONNELLY

In this study of the formative period of medical psychology the author examines materials relating to the period 1790 to 1845 and tries to recount the conditions, both institutional and ideological, under which the new discipline emerged. The greater part of the book concerns those current 'perceptions' of madness, which, although hardly elaborated with scientific rigour, marked off the terrain on which medical psychology advanced and informed the practices which were established in the new lunatic asylums.

208 pages  
 Hardback 0 422 78370 6 £11.00  
 Paperback 0 422 78380 3 £5.50

MICHAEL SHEPHERD

Professor Shepherd illustrates in these papers the importance of the social perspective in psychiatry, showing its impact on the development of psychiatry today and throughout its history. He suggests that the epidemiological approach has come into its own, and psychiatry can be seen to be clearly embedded in the social matrix within which it is practised.

312 pages  
 Hardback 0 422 78350 1 £14.95



**TAVISTOCK**

11 New Fetter Lane, London EC4P 4EE



# Wiley

## THE CLINICAL PSYCHIATRY OF ADOLESCENCE

### Clinical Work from a Social and Developmental Perspective

by D. Steinberg, *Consultant Psychiatrist, Adolescent Unit, Bethlem Royal Hospital and the Maudsley Hospital, London.*

Disturbed adolescents present a very wide range of problems and many different sorts of service and professional worker are available to help them. The main focus of this book is the special contribution of clinical psychiatry to the care of some adolescents, and the ways in which clinical psychiatrists can collaborate with other workers with young people. The book therefore takes a broad perspective, describing the principles and practice of clinical work to the range of other services for young people and the history of their growth, and a number of theories of physical, social, intellectual and emotional development.

*Wiley Series on Studies in Child Psychiatry.*

July 1983 422 pages  
0471 10314 4 \$47.95/£22.50

## USING VIDEO Psychological and Social Applications

edited by P.W. Dorrwick, *Department of Psychology, University of Alaska* and S.J. Biggs, *Community Psychology Group, Department of Social Services, London Borough of Newham*

This book brings together international contributions to the use of video for studying and changing human behaviour. It is concerned with the purposes, methodology and theory of using video in research and practice and thus outlines specific techniques and ways that video-based individual training programs and interventions with groups of participants can be set up. General issues such as ethics, change and social impact are also covered.

August 1983 252 pages  
0471 90093 1 \$31.95/£14.00

## THE PRACTICE OF CLINICAL PSYCHOLOGY IN GREAT BRITAIN

edited by A. Liddell, *North East London Polytechnic*

The role of clinical psychologists in Great Britain has expanded rapidly since the 1960's. In this book the contributors, who are all practising clinical psychologists, describe their practice and the characteristics of the settings in which they operate.

August 1983 approx. 248 pages  
0471 10288 1 approx. \$38.00/£17.50



**John Wiley & Sons Ltd.**  
Baffins Lane, Chichester  
Sussex PO19 1UD, England

## THE 2ND INTERNATIONAL CONGRESS ON DRUGS & ALCOHOL

TEL AVIV, ISRAEL  
18-22 DECEMBER, 1983

An excellent opportunity for researchers, intervention agents and policy makers to exchange views. Topics include: Aspects of substance abuse. Latest trends in treatment. Social services for alcoholics and drug addicts. Special problems of youth and ethnic groups. Do not miss this important event.

Special low cost package arrangements from £248.00 for 7 days.

*For further details please contact:*

**Miss Suzanne Rudd, V. I. P. INTERNATIONAL CONFERENCE SERVICES LTD, 42 NORTH AUDLEY STREET, LONDON W1A 4PY**  
Tel: 01 499 4221.

I would like to receive further details of the 2nd International Congress on Drugs & Alcohol.

Name: \_\_\_\_\_

Address: \_\_\_\_\_

Tel: Work \_\_\_\_\_ Home \_\_\_\_\_

## NOTICE TO ADVERTISERS

Applications for advertisement space in  
*The British Journal of Psychiatry*  
should be made to:

## PTM PROFESSIONAL PUBLICATIONS LIMITED

282 High Street,  
Sutton, Surrey SM1 1PQ  
Telephone: 01-642 0162

## Companion to Psychiatric Studies

Edited by R E Kendell and A K Zealley

1983 third edition 736 pages frontispiece + 71 line illus hardback £30.00

**This established textbook is now aimed at all postgraduate students of psychiatry, including those who have finished with examinations.**

- over half the 40 chapters are completely new
- most of the chapters on the 'basic sciences' have been retained and have been thoroughly updated
- more attention is devoted to treatment — physical, psychological and social

## A Guide to the Mental Health Act 1983

Robert Buglass

1983 168 pages paperback £9.95

This book is published to coincide with the Mental Health Act 1983 becoming law.

Written by a psychiatrist who has been closely involved with the preparation of the Act, it is right up-to-date, completely comprehensive and explains the implications of the Act clearly for the wide range of professionals who need to be familiar with it.

## Clinical Pharmacology of Psychotherapeutic Drugs (Monographs in Clinical Pharmacology Volume 1)

Leo E Hollister

1983 second edition 214 pages line illus hardback £22.00

The purpose of this book is to help the relevant health professional to understand better and use more effectively psychotherapeutic drugs.

Antianxiety drugs, hypnotics, antidepressants, antipsychotics and lithium are discussed from a brief history through to management of overdose.

## Recent Advances in Clinical Psychiatry – 4

Edited by K L Granville-Grossman

1982 296 pages 13 illus paperback £16.00

Contents include: Child psychiatry / Deliberate self harm / Anorexia nervosa / Computed tomography in dementia and depression / Sex chromosome disorders / Transsexualism / The biology of mania

### ORDER FORM



XBP SY 9

Churchill Livingstone books are available from all good medical booksellers or, in case of any difficulty, direct from the publishers at this address:  
Mrs M Waite, Longman Group Ltd, Pinnacles, Fourth Avenue, Harlow, Essex, CM19 5AA, UK

Please send me:

- ..... Companion to Psychiatric Studies *Kendell & Zealley* (443 02483 9) £30.00
- ..... A Guide to the Mental Health Act 1983 *Buglass* (443 03017 0) £9.95
- ..... Clinical Pharmacology of Psychotherapeutic Drugs *Hollister* (443 08273 1) £22.00
- ..... Recent Advances in Clinical Psychiatry — 4 *Granville-Grossman* (443 02570 3) £16.00

I enclose a cheque for £..... (made payable to LONGMAN GROUP LTD) or  
Please charge my Access/Eurocard/Barclaycard/Visa/American Express/Diners Club a/c:

My credit card number is:

Signature .....

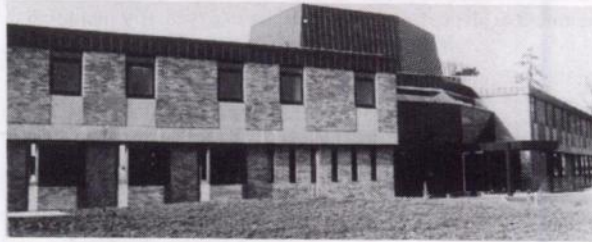
Name (please print) .....

Address (please print) .....

Books may be returned within 28 days for a refund.

Churchill Livingstone

# PRIVATE PSYCHIATRIC TREATMENT



## SPENCER HOUSE

A new purpose-built admissions unit  
for short-stay treatment.

For further information, write – postage free – to the  
Medical Director, FREEPOST, St. Andrew's Hospital, Northampton NN1 5DG.  
Telephone (0604) 29696

# St. Andrew's Hospital



## WAIKATO HOSPITAL BOARD

### SPECIALIST PSYCHIATRIST

—ROTORUA HOSPITAL, ROTORUA, NEW ZEALAND

Applications are called for a position of SPECIALIST PSYCHIATRIST at Rotorua Hospital. This is a general hospital of 400 beds, serving a population of 100,000, and with all specialities well catered for.

A new Acute Psychiatric Unit of 32 beds has recently been opened, and the new appointee would work with the present team of specialist psychiatrist, registrar, house surgeon, and the para-medical back-up of clinical psychologist, and psychiatric social workers. The inherent philosophy of the unit is to provide a good community psychiatric service, with emphasis on day care facilities.

The position is whole-time, but may be part-time by negotiation. Salary will be within the range of the specialist automatic scale of \$35,121–\$45,213.

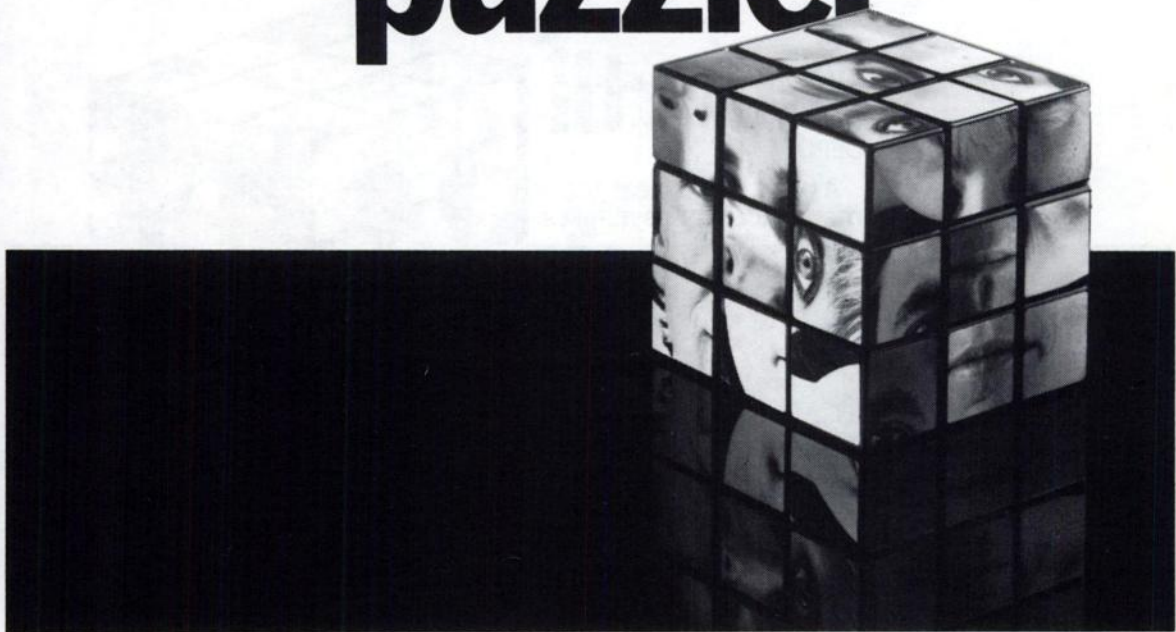
Rotorua is the centre of the geothermal region in the mid-North Island of New Zealand, with a good climate. It is a very popular tourist area, providing excellent recreational facilities such as fishing, hunting, tramping, and a wide variety of water-sports on the several lakes in the district.

Application forms and Conditions of Employment are available from the Chief Executive, Waikato Hospital Board, P.O. Box 934, Hamilton, New Zealand, with whom applications close on 28 October 1983.

In the first communication, applicants should state the Medical School from which they received their basic medical qualification.

Further information on this position may be obtained from the Medical Superintendent, Rotorua Hospital, Private Bag, Rotorua, New Zealand, telephone Rotorua 81199. The Medical Superintendent could be available in U.K. during September for possible interview.

# A new depot neuroleptic to help solve the psychotic puzzle.



Prescribing information is available overleaf.

# Piportil

DEPOT PIPOTHIAZINE PALMITATE

## From May & Baker the company that developed Largactil.

New Piportil depot is a unique phenothiazine derivative from May & Baker, the company that helped to revolutionise the treatment of psychoses with the introduction of Largactil.

Clinical trials show Piportil depot to exert a potent antipsychotic action against a wide range of symptoms<sup>1,4</sup> Piportil depot is a fast acting<sup>5,6</sup> phenothiazine, and causes minimal sedation<sup>6</sup> and depression<sup>3,5</sup>

These benefits, together with its four week duration of action<sup>2,7</sup> facilitate rapid and maintained social integration for your psychotic patients,<sup>3</sup> helping you to solve the psychotic puzzle.

### Piportil DEPOT

A new way to treat the  
many facets of psychoses.



**Prescribing Information:** Dosage: (Adults) Initially 25mg (0.5ml) by deep intramuscular injection into the gluteal region to assess susceptibility of patient. Dosage should be increased by increments of 25 or 50mg at appropriate intervals until a satisfactory response is obtained. Most patients respond to a dose of 50-100mg (1-2ml) every 4 weeks. Patients should be stabilised under psychiatric supervision. Contraindications: Marked cerebral arteriosclerosis, phaeochromocytoma, renal or liver failure, severe cardiac insufficiency or hypersensitivity to other phenothiazine derivatives. Precautions: A history of convulsive disorders or marked extrapyramidal reactions to oral phenothiazines, in pregnancy and lactation. Side-effects: Reversible extrapyramidal reactions, sleep disturbance, depression, blurred vision, asthma, impotence, dry mouth, nausea, amenorrhoea, galactorrhoea, hypotension, hyperhidrosis and weight gain have been observed occasionally. Corneal or lenticular cloudiness have not been observed with Piportil alone, but in treatment with phenothiazine preparations in high dosage over a long period, there is a risk of such side-effects occurring. Local reactions at site of injection are rare. Presentations: Boxes of 10 x 1ml (50mg) and 10 x 2ml (100mg) ampoules. Product Licence No. (P) 0002/0117. **References:** 1. Singh A N, Saxena B. *Curr Ther Res* 1979; 25:121. 2. Albert J M, Eise R, Cooper S F. *Curr Ther Res* 1980; 27:897. 3. Winescuve A, Fontaine P. *Curr Ther Res* 1980; 27:411. 4. Lacombe Y D et al. 2nd World Congress Psychiat Barcelona 1975. *Biological Psych Today* 1979. Elsevier Holland Biomedical Press, pages 1087-1094. 5. Johnson R E. *J Int Med Res* 1975; 7:187. 6. Hill M, Sersberg B, Patterson C, Amel A, Wadud A, Hermans W M. *Curr Ther Res* 1978; 24:689. 7. Sampson G, Varga V. *Curr Ther Res* 1975; 17:No. 1:276-280. Further information is available on request. May & Baker Ltd, Dagenham, Essex RM10 7XS. Piportil depot is a trademark. MA 1971.

