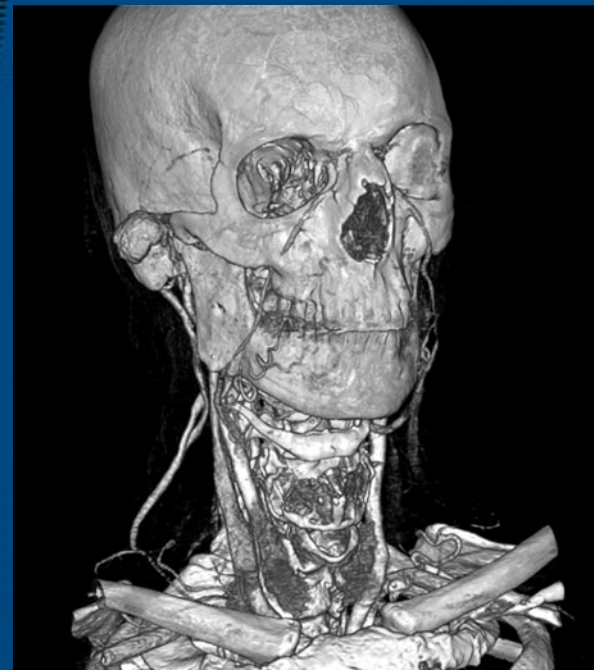


ISSN 0022-2151

April
2010

The Journal of
**Laryngology
& Otology**

Founded in 1887
by Morell Mackenzie & Norris Wolfenden



features:

Trends in paediatric airway surgery

Can laryngectomees smell?

Quality of life after vestibular schwannoma surgery

The management of facial nerve paralysis in children

Functional status after total laryngectomy

Antibiotic prescribing for tonsillitis and peritonsillar abscess

Vol

124

No 4

Courses on Middle Ear and Lateral Skull Base Surgery

Course Director: Mario Sanna, MD

This cadaver hands-on workshop provides the individual opportunity for:

- Live surgery every morning
- Video presentation of techniques and clinical cases
- Didactic presentations
- Performing the surgical procedures on specially prepared bones and half heads
- Discussions

27th September - 1st October 2010
(Middle ear Surgery)
22nd - 26th November 2010
(Skull Base Surgery)

For additional information contact:
Secretary Gruppo Otologico
Via Morigi, 41 - 29100 Piacenza - Italy
Tel: + 39 0523 754362
Fax: + 39 0523 453708

JOINT MEETING
JUNE 16-19, 2010 PARMA (ITALY)

IV CONSENSUS IN AUDITORY IMPLANTS

Presidents
Salvatore Bacciu M.D. - Mario Sanna M.D.

V EAONO INSTRUCTIONAL WORKSHOP

President Angel Manuel Ramos M.D.

MAIN TOPICS: Cochlear Implants
Middle Ear Implants
Auditory Brainstem

Free Papers
Round Tables
Workshops
Implants

CALL FOR PAPERS
WWW.CONSENSUSIMPLANTSEAONO.EU

96 Instructional Courses

SHORT TEMPORAL BONE DISSECTION COURSES IN PIACENZA

SPECIAL SESSIONS FOR TRAINEES (EFOT SESSION)

LIVE SURGERY, COCHLEAR IMPLANTS, MIDDLE EAR IMPLANTS AND AUDITORY BRAINSTEM IMPLANTS IN THREE SIMULTANEOUS OPERATING ROOMS in Piacenza, 2010 June 15th



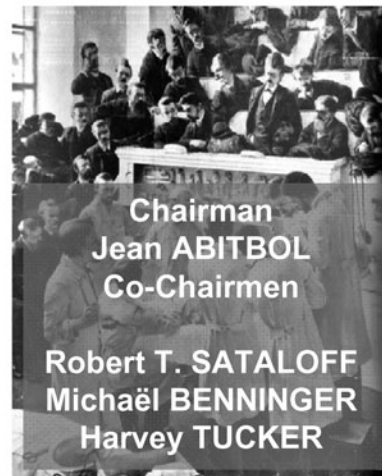
15th International Workshop 2010 : LASER VOICE SURGERY AND VOICE CARE

April 9th & 10th , 2010 PARIS – FRANCE

ABITBOL P. (France)
ACCORDI M. (Italy)
ALTMAN K. (U.S.A.)
AVIV J. (USA)
BEHLAU M. (Brazil)
BRANSKY R. (USA)
BLESS D. (U.S.A.)
BLITZER A. (USA)
CAMPOS G. (Columbia)
CAROLL L. (USA)
CASTRO A. (France)
CHABOLLE F. (France)
CHEVALLIER D. (France)
CREVIER-BUCHMAN (France)
CRUMLEY R. (USA)
DAVIES G. (U.K.)
ELIDAN J. (Israel)

DE ROSSI G. (Italia)
DAILEY S. (USA)
FINK M. (France)
GIOVANNI A. (France)
GOMBERGH R. (France)
HESS M. (Germany)
HIRANO S. (Japan)
HOFFMAN H. (USA)
JI ANG J. (USA)
KLAP P. (France)
KOROVIN G. M. (U.S.A.)
LACOURREYE O. (France)
LACAU ST GUILY J. (France)
LAWSON G. (Belgium)
MAIMARAN J.J. (France)
MARAGOS N. (U.S.A.)

MARIE J.-P. (France)
MARON L. (South Africa)
MERATI A. (USA)
MURRY T. (USA)
OSSOF R. (ISA)
REMACLE M. (Belgium)
RICCI-MACCARINI A. (Italia)
RILEY W. (USA)
RUBIN J. (U.K.)
RUBIN A. (USA)
SERRANO R. (Argentina)
SULICA L. (USA)
THIBEAULT S. (U.S.A.)
WOISARD V. (France)
WOO P. (U.S.A.)
WOODSON G. (USA)



A prize of 1000€ for Junior Doctors

For the best Video-clip of 5 minutes on: voice science - voice care - voice surgery



Key Note Lecture Pr Fink: Voice & space-time continuum: Time-Reversal Waves
Benign lesions of the vocal folds: laryngeal mechanisms and physiopathology
Life surgical cases: Laser vs. cold instruments The Female Voice
Cutting edge in Laryngology and Voice Science in 2010

Jean ABITBOL, M.D. - 1, Rue Largillière – 75016 PARIS – FRANCE

Tel: 00 33 1 46 47 91 89 – Fax : 00 33 1 45 27 72 30 – Email : voice.abitbol@noos.fr

The Journal of
Laryngology & Otology

Founded in 1887 by Morell Mackenzie and Norris Wolfenden

Editors

Guy Kenyon (London)
Robin Youngs (Gloucester)

Emeritus Editor

Neil Weir (Guildford)

Book Review and Senior Assistant Editor

Liam Flood (Middlesbrough)

Assistant Editors

Martin Bailey (London)
Jon Bennett (London)
Abir Bhattacharyya (London)
Brian Bingham (Glasgow)
Patrick Bradley (Nottingham)
Alfio Ferlito (Udine)
Edward Fisher (Birmingham)
S S Musheer Hussain (Dundee)
Richard Irving (Birmingham)
Andrew Jones (Liverpool)
Nick Jones (Nottingham)
Bhik Kotecha (London)
Valerie Lund (London)
Robert Mills (Edinburgh)
Desmond Nunez (Bristol)
Andrew Prichard (Shrewsbury)
David Proops (Birmingham)

Alessandra Rinaldo (Udine)

Peter Robb (Epsom)

Mark Samaha (Quebec)

Nick Stafford (Hull)

Iain Swan (Glasgow)

John Watkinson (Birmingham)

Richard Wight (Middlesbrough)

Tim Woolford (Manchester)

Matthew Yung (Ipswich)

Advisers in Audiology

Doris-Eva Bamiou (London)

Linda Luxon (London)

Advisers in Pathology

Simon Rose (Bath)

Ketan Shah (Oxford)

Lesley Ann Smallman (Gloucester)

Adrian Warfield (Birmingham)

Adviser in Radiology

Tim Beale (London)

Adviser in Statistics

Linda Hunt (Bristol)

Website Editor

Vik Veer (Newcastle)

Managing Editor

Rosamund Greensted

Editorial Office: Maybank, Quickley Rise, Chorleywood, Herts WD3 5PE, UK.
Tel/fax: +44 (0)1923 283561. Email: j.l.o@btconnect.com. Website: <http://www.jlo.co.uk>

The Journal of Laryngology & Otology (ISSN 0022-2151) is published monthly in both print and electronic form and distributed on behalf of the proprietors, JLO (1984) Ltd, by Cambridge University Press
Registered Charity No 293063

SUBSCRIPTIONS, LICENSING, ADVERTISING AND REPRINTS

The Journal of Laryngology & Otology (ISSN 0022-2151) is published monthly in both print and electronic form and distributed on behalf of the proprietors, JLO (1984) Ltd, by Cambridge University Press.

Subscriptions: Volume 124, 2010 (Monthly)

Both Standard and Online-only subscription prices entitle subscribers to access all of the archival online content, which dates back to Volume 114 (2000). For further details please go to Cambridge University Press.

Institutions print and electronic: £358/\$716. Institutions electronic only: £320/\$640. Individuals print plus electronic: £190/\$380. Member rates available – please enquire. Special rates available for Trainees. Print ISSN 0022-2151. Electronic ISSN 1748-5460

Orders are regarded as firm, and payments are not refundable. All orders and enquiries, including online licensing and consortia enquiries, should be sent to: Journals Subscription Department, Cambridge University Press.

*Periodicals postage paid at Rahway, NJ. US Postmaster: send address changes to *The Journal of Laryngology & Otology*, c/o Mercury Airfreight International Ltd, 365 Blair Road, Avenel, NJ 07001, USA.

Advertising sales

Contact: Rebecca Curtis, Journals, Cambridge University Press.

Tel: +44 (0)1223 325757

Fax: +44 (0)1223 325801

E-mail: ad_sales@cambridge.org

Other business correspondence

All other business correspondence, should be sent to: Daniel Edwards dedwards@cambridge.org Journals Department, Cambridge University Press. Enquiries about reprints should be sent to Rebecca Curtis: special_sales@cambridge.org

© 2010 JLO (1984) Limited

Apart from any fair dealing for the purposes of research or private study, or criticism or review, as permitted under the UK Copyright, Designs and Patents Act, 1988, no part of this publication may be reproduced, stored, or transmitted, in any form or by any means, without the prior permission in writing of the Editors, or in the case of reprographic reproduction in accordance with the terms of licences issued by the Copyright Licensing Agency in the UK, or in accordance with the terms of licences issued by the appropriate Reproduction Rights Organization outside the UK. Enquiries concerning reproduction outside the terms stated here should be sent to the publishers at the above address. Contributors and advertisers are responsible for the scientific content and the views expressed, which are not necessarily those of the Editors or of Cambridge University Press.

Typeset by Techset and printed in Great Britain by Latimer Trends

SUMMARY GUIDANCE FOR AUTHORS

The Journal of Laryngology & Otology (JLO) is a peer-reviewed publication, and is indexed/abstracted in most major databases including Index Medicus, MEDLINE/PubMed, Science Citation Index, Current Contents and EMBASE.

Only a very brief summary of the submission requirements is presented here: when preparing their manuscripts, authors must consult and comply with the full Instructions for Authors on the *JLO* website at <http://www.jlo.co.uk/docs/submittingarticles.htm>

Adherence to these will speed up the editorial process.

All contributions are considered for publication on the understanding that they have been submitted solely to the *JLO* and that they have not previously been published. Contributions in the following categories will be considered: Main Articles (reporting clinical research or audit), Review Articles, Historical Articles, Short Communications (including 'How I do it'), Clinical Records (case reports), Radiology/Pathology/Oncology in Focus, and Letters to the Editors.

Submission

All contributions must be accompanied by a covering letter, which must be signed by **all** authors. Manuscripts should be submitted to the Editors:

- either **online** via www.jlo.co.uk
- or **by post** to the Editorial Office, *The Journal of Laryngology & Otology*, Maybank, Quickley Rise, Chorleywood, Hertfordshire WD3 5PE, UK (Tel/Fax: +44 (0)1923 283561; E-mail j.l.o@btconnect.com). Three copies should be submitted, one on floppy disk or CD-ROM (including separate TIFF files of any figures) and two printed on paper (together with two sets of figures).

The text of the manuscript (incorporating all tables and the figures legends, but **not** the figures themselves) must be saved as a Microsoft Word document or an RTF file (i.e. 'rich text format'). Use double-spaced, unjustified text throughout. The title page must contain the full title of the paper; the names and qualifications of all authors; the departments(s) and institution(s) where the work was carried out; and the name, postal and e-mail address, and telephone and fax numbers of the author responsible for all communications about the manuscript and proofs. An Abstract (maximum 150 words) and Key words must be provided for all contributions (except Letters).

References should be identified in the text by superscript Arabic numerals and listed at the end of the manuscript in the order in which they are first cited in the text. The tables feature of the word processor should be used to prepare Tables, and both these and the list of Figure legends should appear on separate pages at the end of the manuscript. All Figures must be saved as separate TIFF files at a resolution of 600 dpi.

The authors of all material accepted for publication will be required to assign copyright to JLO (1984) Ltd; a form for this purpose and for ordering offprints will accompany the proofs. The proofs will be sent by e-mail to the corresponding author as a PDF file, and should be corrected and returned within three working days.