

A Bias-Corrected Estimator for the Crosswise Model with Inattentive Respondents

Yuki Atsusaka¹ and Randolph T. Stevenson²

¹ Ph.D. Candidate, Department of Political Science, Rice University, 6100 Main Street, Houston, TX 77005, USA.

E-mail: atsusaka@rice.edu, URL: <https://atsusaka.org>

² Radoslav Tsanoff Professor of Public Affair, Department of Political Science, Rice University, 6100 Main St, Houston, TX 77005, USA. E-mail: randystevenson@rice.edu, URL: <https://www.randystevenson.com>

Abstract

The crosswise model is an increasingly popular survey technique to elicit candid answers from respondents on sensitive questions. Recent studies, however, point out that in the presence of inattentive respondents, the conventional estimator of the prevalence of a sensitive attribute is biased toward 0.5. To remedy this problem, we propose a simple design-based bias correction using an anchor question that has a sensitive item with known prevalence. We demonstrate that we can easily estimate and correct for the bias arising from inattentive respondents without measuring individual-level attentiveness. We also offer several useful extensions of our estimator, including a sensitivity analysis for the conventional estimator, a strategy for weighting, a framework for multivariate regressions in which a latent sensitive trait is used as an outcome or a predictor, and tools for power analysis and parameter selection. Our method can be easily implemented through our open-source software *cWise*.

Keywords: crosswise model, sensitive questions, inattentive survey respondents, indirect questioning techniques, privacy protection

1 Introduction

Political scientists often use surveys to estimate and analyze the prevalence of sensitive attitudes and behavior.¹ To mitigate sensitivity bias in self-reported data (Blair, Coppock, and Moor 2020), such as bias arising from social desirability, self-image protection, fear of disclosing truth, and perceived intrusiveness, various survey techniques have been developed including randomized response techniques, list experiments, and endorsement experiments.² The *crosswise model* is an increasingly popular design among these techniques.³ A crosswise question shows respondents two statements: one about a sensitive attitude or behavior of interest (e.g., “I am willing to bribe a police officer”) and one about some piece of private, nonsensitive information whose population prevalence is known (e.g., “My mother was born in January”). The respondents are then asked a question, the answer to which depends jointly on the truth status of both statements and so fully protects respondent privacy (Yu, Tian, and Tang 2008). The key idea is that even though researchers only observe respondents’ answers to the joint condition, they can estimate the population prevalence of the sensitive attribute using the known probability distribution of the nonsensitive statement.⁴

Despite its promise and several advantages over other indirect questioning techniques (Meisters, Hoffmann, and Musch 2020b), recent studies suggest that the crosswise model suffers

- 1 Such topics include racial animus (Kuklinski, Cobb, and Gilens 1997), attitudes toward non-Christian candidates (Kane, Craig, and Wald 2004), support for militant organizations (Lyal, Blair, and Imai 2013), support for authoritarian regimes (Frye *et al.* 2017), voting for right-wing populist parties (Lehrer, Juhl, and Gschwend 2019), and vote buying (Cruz 2019).
- 2 For a comparative and validation study for these methods, see Rosenfeld, Imai, and Shapiro (2016).
- 3 About 60 studies related to the design were published between 2016 and 2021 across disciplines.
- 4 This idea of intentionally injecting statistically tractable noise originated from the randomized response technique, which was inherited by the literature on differential privacy (Evans and King 2021).

Political Analysis (2023)
vol. 31: 134–148
DOI: 10.1017/pan.2021.43

Published
17 December 2021

Corresponding author
Yuki Atsusaka

Edited by
Jeff Gill

© The Author(s) 2021. Published by Cambridge University Press on behalf of the Society for Political Methodology. This is an Open Access article, distributed under the terms of the Creative Commons Attribution licence (<https://creativecommons.org/licenses/by/4.0/>), which permits unrestricted re-use, distribution, and reproduction in any medium, provided the original work is properly cited.

from two interrelated problems, casting doubt on the validity of the design. First, its relatively complex format leads to a significant share of inattentive survey respondents who give answers that are essentially random (Enzmann 2017; Heck, Hoffmann, and Moshagen 2018; John *et al.* 2018; Schnapp 2019; Walzenbach and Hinz 2019).⁵ Second, this tendency usually results in overestimates of the prevalence of sensitive attributes (Höglinger and Diekmann 2017; Höglinger and Jann 2018; Meisters, Hoffmann, and Musch 2020a; Nasirian *et al.* 2018). While several potential solutions to this problem have been discussed in the extant literature (Enzmann 2017; Meisters *et al.* 2020a; Schnapp 2019), they rely on rather strong assumptions and external information from either attention checks or a different unprotected—but still sensitive—question answered by the same respondents, leading to unsatisfactory solutions.⁶ In this article, we propose an alternative solution that builds on insights about “zero-prevalence items” (Höglinger and Diekmann 2017) to correct for the bias arising from inattentive respondents.

More generally, we provide the first detailed description and statistical evaluation of methods for measuring and mitigating the bias caused by inattentive respondents in the crosswise model. This includes an evaluation of the performance of our new estimator and a brief assessment of previous methods. Consequently, we not only offer our method as a solution for estimating prevalence rates without bias, but also explain how its assumptions can be easily evaluated and made to hold by design. It also allows us to develop many extensions that enhance its practical usefulness to researchers, including (1) a sensitivity analysis to simulate the amount of bias caused by inattentive respondents even when our correction is not available; (2) a weighting strategy that allows our estimator to be used with general sampling schemes; (3) a framework for multivariate regressions in which a latent sensitive trait is used as an outcome or a predictor; and (4) simulation-based tools for power analysis and parameter selection. We developed easy-to-use software that allows users to analyze data from the crosswise model with our bias correction and its extensions.

2 Promise and Pitfalls of the Crosswise Model

2.1 The Crosswise Model

The crosswise model was developed by Yu *et al.* (2008) to overcome several limitations with randomized response techniques (Blair, Imai, and Zhou 2015; Warner 1965). In political science and related disciplines, this design has been used to study corruption (Corbacho *et al.* 2016; Oliveros and Gingerich 2020), “shy voters” and strategic voting (Waubert de Puiseau, Hoffmann, and Musch 2017), self-reported turnout (Kuhn and Vivyan 2018), prejudice against female leaders (Hoffmann and Musch 2019), xenophobia (Hoffmann and Musch 2016), and anti-refugee attitudes (Hoffmann, Meisters, and Musch 2020). The crosswise model asks the respondent to read two statements whose veracity is known only to her. For example, Corbacho *et al.* (2016) study corruption in Costa Rica with the following question:

Crosswise Question: How many of the following statements are true?

Statement A: In order to avoid paying a traffic ticket, I would be willing to pay a bribe to a police officer.

Statement B: My mother was born in October, November, or December.

- Both statements are true, or neither statement is true.
- Only one statement is true.

- ⁵ One strength of the design is that there is not a clear best strategy for noncooperators and so by including some simple design features (discussed below), most noncooperative response strategies can be made to be “as if” random. As such, we refer to any such strategy as random or “inattentive.”
- ⁶ Several other studies have contributed important work relevant to building a solution, though each stops short of actually offering one (Höglinger and Diekmann 2017; Höglinger and Jann 2018; Meisters *et al.* 2020a; Walzenbach and Hinz 2019).

Statement A is the sensitive statement that researchers would have asked directly if there had been no worry about sensitivity bias. The quantity of interest is the population proportion of individuals who agree with Statement A.⁷ In contrast, Statement B is a nonsensitive statement whose population prevalence is *ex ante* known to researchers.⁸ The crosswise model then asks respondents whether “both statements are true, or neither statement is true” or “only one statement is true.” Respondents may also have the option of choosing “Refuse to Answer” or “Don’t Know.”

Importantly, the respondent’s answer does not allow interviewers (or anyone) to know whether he agrees or disagrees with the sensitive statement, which fully protects his privacy. Nevertheless, the crosswise model allows us to estimate the proportion of respondents for which the sensitive statement is true via a simple calculation. Suppose that the observed proportion of respondents choosing “both or neither is true” is 0.65 while the known population proportion for Statement B is 0.25. If the sensitive and nonsensitive statements are statistically independent, it follows that: $\hat{P}(\text{TRUE-TRUE} \cup \text{FALSE-FALSE}) = 0.65 \Rightarrow \hat{P}(A=\text{TRUE}) \times P(B=\text{TRUE}) + \hat{P}(A=\text{FALSE}) \times P(B=\text{FALSE}) = 0.65 \Rightarrow \hat{P}(A=\text{TRUE}) \times 0.25 + (1 - \hat{P}(A=\text{TRUE})) \times 0.75 = 0.65 \Rightarrow \hat{P}(A=\text{TRUE}) = \frac{0.65-0.75}{-0.5} = 0.2.$, where \hat{P} is an estimated proportion.

2.2 Relative Advantages and Limitations

Despite its recent introduction to political scientists by Corbacho et al. (2016) and Gingerich et al. (2016), the crosswise model has not yet been widely used in political science. We think that the primary reason is that it has not been clear to many political scientists how and when the crosswise model is preferable to other indirect questioning techniques. To help remedy this problem, Table 1 summarizes relative advantages of the crosswise model over randomized response, list experiments, and endorsement experiments, which are more commonly used survey techniques in political science (see also Blair et al. 2020; Blair, Imai, and Lyall 2014; Hoffmann et al. 2015; Höglinger and Jann 2018; Meisters et al. 2020b; Rosenfeld et al. 2016).⁹

The potential advantages of the crosswise model are that the design (1) fully protects respondents’ privacy, (2) provides no incentive for respondents to lie about their answers because

Table 1. Relative advantages of the crosswise model.

	Crosswise	RR	List	Endorsement
Privacy protection	Full protection	Full protection	Partial to full protection	Full protection
Self-protective option	No	Yes	Yes	Yes
Split samples	Not required	Not required	Required	Required
Randomization device	Not required	Required	Not required	Not required
Efficiency	High	High	Moderate	Low
Measurement	Direct	Direct	Direct	Indirect
Instruction complexity	Moderate	Difficult	Easy	Very easy
Auxiliary data	Required	Required	Not required	Not required

Note: This table shows potential (dis)advantages of the crosswise model compared to randomized response techniques (RR), list experiments (List), and endorsement experiments (Endorsement).

7 Often, this proportion is less than 0.5, and direct questioning is expected to underestimate the quantity. Thus, we assume that the quantity of interest is always less than 0.5 in the rest of the argument.
 8 Prevalence rates for nonsensitive questions can come from census data or other kinds of statistical regularities like the Newcomb–Benford law (Kundt 2014). Furthermore, in Online Appendix C.6, we present an approach that relies on a virtual die roll but that overcomes the respondent’s natural skepticism that such information will be recorded.
 9 We only consider the simplest (i.e., benchmark) design for each technique.

there is no “safe” (self-protective) option, (3) does not require splitting the sample (as in list and endorsement experiments), (4) does not need an external randomization device (as in randomized response), (5) is relatively efficient compared with other designs, and (6) asks about sensitive attributes directly (unlike in endorsement experiments). In contrast, the potential disadvantage of this design is that its instructions may be harder to understand compared with those of list and endorsement experiments (but are likely much easier than for randomized response). In addition, the crosswise model requires auxiliary data in the form of a known probability distribution of the nonsensitive information (as in randomized response).

Rosenfeld *et al.* (2016) show that randomized response appears to outperform list and endorsement experiments by yielding the least biased and most efficient estimate of the ground truth. Since the crosswise model was developed to outperform randomized response (Yu *et al.* 2008), in principle, the crosswise model is expected to better elicit candid answers from survey respondents than any other technique. To date, several validation studies appear to confirm this expectation (Hoffmann *et al.* 2015; Hoffmann and Musch 2016; Höglinger and Jann 2018; Höglinger, Jann, and Diekmann 2016; Jann, Jerke, and Krumpal 2012; Jerke *et al.* 2020; Meisters *et al.* 2020a).

Recently, however, it has become increasingly clear that the design has two major limitations, which may undermine confidence in the method. First, it may produce a relatively large share of inattentive respondents who give random answers (Enzmann 2017; Heck *et al.* 2018; John *et al.* 2018; Schnapp 2019). For example, Walzenbach and Hinz (2019, 14) conclude that “a considerable number of respondents do not comply with the intended procedure” and it “seriously limit[s] the positive reception the [crosswise model] has received in the survey research so far.” Second, it appears to overestimate the prevalence of sensitive attributes and yields relatively high *false positive* rates (Höglinger and Jann 2018; Kuhn and Vivyan 2018; Meisters *et al.* 2020a; Nasirian *et al.* 2018). After finding this “blind spot,” Höglinger and Diekmann (2017, 135) lament that “[p]revious validation studies appraised the [crosswise model] for its easy applicability and seemingly more valid results. However, none of them considered false positives. Our results strongly suggest that in reality the [crosswise model] as implemented in those studies does not produce more valid data than [direct questioning].” Nevertheless, we argue that with a proper understanding of these problems, it is possible to solve them and even extend the usefulness of the crosswise model. To do so, we need to first understand how inattentive respondents lead to bias in estimated prevalence rates.

2.3 Inattentive Respondents Under the Crosswise Model

The problem of inattentive respondents is well known to survey researchers, who have used a variety of strategies for detecting them such as attention checks (Oppenheimer, Meyvis, and Davidenko 2009). Particularly in self-administered surveys, estimates of the prevalence of inattentiveness are often as high as 30%–50% (Berinsky, Margolis, and Sances 2014). Recently, inattention has also been discussed with respect to list experiments (Ahlquist 2018; Blair, Chou, and Imai 2019). Inattentive respondents are also common under the crosswise model, as we might expect given its relatively complex instructions (Alvarez *et al.* 2019). Researchers have estimated the proportion of inattentive respondents in surveys featuring the crosswise model to be from 12% (Höglinger and Diekmann 2017) to 30% (Walzenbach and Hinz 2019).¹⁰

To proceed, we first define inattentive respondents under the crosswise model as *respondents who randomly choose between “both or neither is true” and “only one statement is true.”* We assume that random answers may arise due to multiple reasons, including *nonresponse*, *noncompliance*,

10 The crosswise model has been implemented in more than eight countries with different platforms and formats, and inattention has been a concern in many of these studies.

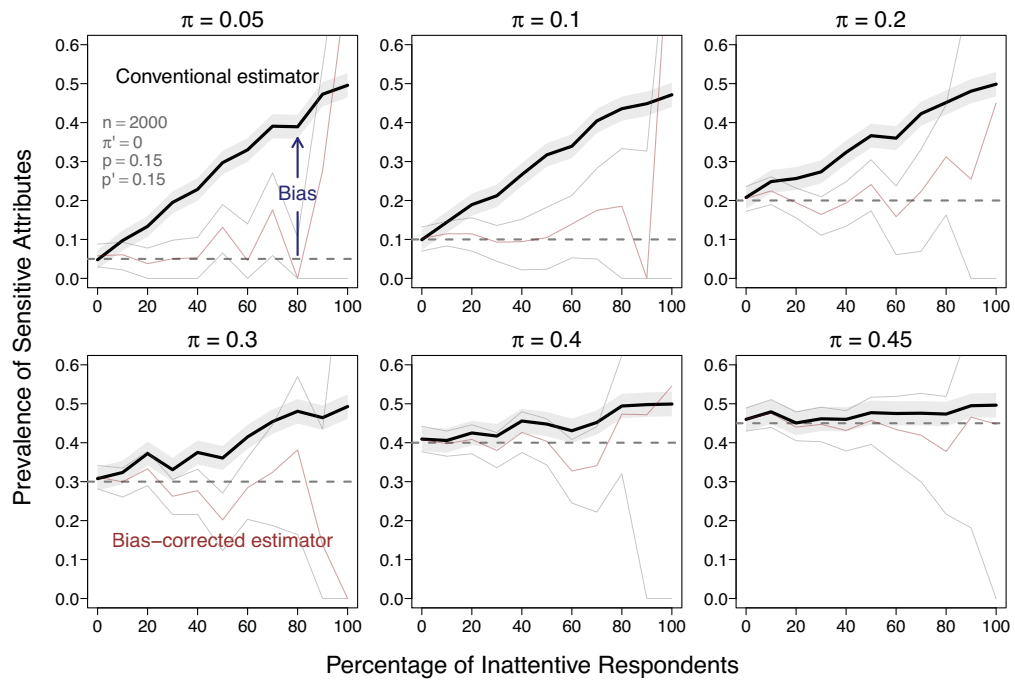


Figure 1. Consequences of inattentive respondents. *Note:* This figure illustrates how the conventional estimator (thick solid line) is biased toward 0.5, whereas the proposed bias-corrected estimator (thin solid line) captures the ground truth (dashed line). Both estimates are shown with bootstrapped 95% confidence intervals (with 1,000 replications). Each panel is based on our simulation in which we set the number of respondents $n = 2,000$, the proportion of a sensitive anchor item $\pi' = 0$, the proportions for nonsensitive items in the crosswise and anchor questions $p = 0.15$ and $p' = 0.15$, respectively. The bias increases as the percentage of inattentive respondents increases and the true prevalence rate (π) decreases. The top-left panel notes parameter values for all six panels (for notation, see the next section).

cognitive difficulty, lying, or any combination of these (Heck *et al.* 2018; Jerke *et al.* 2019; Meisters *et al.* 2020a).

We now consider the consequences of inattentive respondents in the crosswise model. Figure 1 plots the bias in the conventional estimator based on hypothetical (and yet typical) data from the crosswise model.¹¹ The figure clearly shows the expected bias toward 0.5 and suggests that the bias grows as the percentage of inattentive respondents increases and as the quantity of interest (labeled as π) gets close to 0. We also find that the size of the bias does not depend on the prevalence of the nonsensitive item. To preview the performance of our bias-corrected estimator, each plot also shows estimates based on our estimator, which is robust to the presence of inattentive respondents regardless of the value of the quantity of interest. One key takeaway is that researchers must be more cautious about inattentive respondents when the quantity of interest is expected to be close to zero, because these cases tend to produce larger biases.

Figure 1 also speaks to critiques of the crosswise model that have focused on the incidence of false positives, as opposed to bias overall (Höglinger and Diekmann 2017; Höglinger and Jann 2018; Meisters *et al.* 2020a; Nasirian *et al.* 2018). While these studies are often agnostic about the source of false positives, the size of the biases in this figure suggests that the main source is likely inattentive respondents.

Several potential solutions to this problem have been recently discussed. The first approach is to identify inattentive survey takers via comprehension checks, remove them from data, and

¹¹ Several studies have conjectured that the presence of inattentive respondents biases the point estimate toward 0.5, such as Appendix 7 of John *et al.* (2018), Figure C.4 in the Online Appendix of Höglinger and Diekmann (2017), Heck *et al.* (2018, 1899), Enzmann (2017), and Schnapp (2019, 311).

perform estimation and inference on the “cleaned” data (i.e., listwise deletion; Höglinger and Diekmann 2017; Höglinger and Jann 2018; Meisters *et al.* 2020a). One drawback of this method is that it is often challenging to discover which respondents are being inattentive. Moreover, this approach leads to a biased estimate of the quantity of interest unless researchers make the *ignorability* assumption that having a sensitive attribute is statistically independent of one’s attentiveness (Alvarez *et al.* 2019, 148), which is a reasonably strong assumption in most situations.¹² The second solution detects whether respondents answered the crosswise question randomly via direct questioning and then adjusts the prevalence estimates accordingly (Enzmann 2017; Schnapp 2019). This approach is valid if researchers assume that direct questioning is itself not susceptible to inattentiveness or social desirability bias as well as that the crosswise question does not affect respondents’ answers to the direct question. Such an assumption, however, is highly questionable, and the proposed corrections have several undesirable properties (Online Appendix B). Below, we present an alternative solution to the problem, which yields an unbiased estimate of the quantity of interest with a much weaker set of assumptions than in existing solutions.

3 The Proposed Methodology

3.1 The Setup

Consider a single sensitive question in a survey with n respondents drawn from a finite target population via simple random sampling with replacement. Suppose that there are no missing data and no respondent opts out of the crosswise question. Let π (quantity of interest) be the population proportion of individuals who agree with the sensitive statement (e.g., I am willing to bribe a police officer). Let p be the known population proportion of people who agree with the nonsensitive statement (e.g., My mother was born in January). Finally, let λ (and $1 - \lambda$) be the population proportion of individuals who choose “both or neither is true” (and “only one statement is true”). Assuming $\pi \perp p$, Yu *et al.* (2008) introduced the following identity as a foundation of the crosswise model:

$$\mathbb{P}(\text{TRUE-TRUE} \cup \text{FALSE-FALSE}) = \lambda = \pi p + (1 - \pi)(1 - p). \tag{1a}$$

Solving the identity with respect to π yields $\pi = \frac{\lambda + p - 1}{2p - 1}$. Based on this identity, the authors proposed the naïve crosswise estimator:

$$\hat{\pi}_{CM} = \frac{\hat{\lambda} + p - 1}{2p - 1}, \tag{1b}$$

where $\hat{\lambda}$ is the observed proportion of respondents choosing “both or neither is true” and $p \neq 0.5$.

We call Equation (1b) the naïve estimator, because it does not take into account the presence of inattentive respondents who give random answers in this design. When one or more respondents do not follow the instruction and randomly pick their answers, the proportion must be (generalizing Walzenbach and Hinz 2019, 10):

$$\lambda = \{ \pi p + (1 - \pi)(1 - p) \} \gamma + \kappa(1 - \gamma), \tag{1c}$$

where γ is the proportion of *attentive* respondents and κ is the probability with which inattentive respondents pick “both or neither is true.”

12 For a more general treatment of the consequences of dropping inattentive respondents in experiments, see Aronow, Baron, and Pinson (2019).

We then quantify the bias in the naïve estimator as follows (Online Appendix A.1):

$$B_{CM} \equiv E[\widehat{\pi}_{CM}] - \pi \tag{1d}$$

$$= \left(\frac{1}{2} - \frac{1}{2\gamma}\right) \left(\frac{\lambda - \kappa}{\rho - \frac{1}{2}}\right). \tag{1e}$$

Here, B_{CM} is a bias with respect to our quantity of interest caused by inattentive respondents. Under regularity conditions ($\pi < 0.5$, $\rho < \frac{1}{2}$, and $\lambda > \kappa$), which are met in typical crosswise models, the bias term is always positive (Online Appendix A.2). This means that the conventional crosswise estimator always *overestimates* the population prevalence of sensitive attributes in the presence of inattentive respondents.

3.2 Bias-Corrected Crosswise Estimator

To address this pervasive issue, we propose the following bias-corrected crosswise estimator:

$$\widehat{\pi}_{BC} = \widehat{\pi}_{CM} - \widehat{B}_{CM}, \tag{2a}$$

where \widehat{B}_{CM} is an unbiased estimator of the bias:

$$\widehat{B}_{CM} = \left(\frac{1}{2} - \frac{1}{2\widehat{\gamma}}\right) \left(\frac{\widehat{\lambda} - \frac{1}{2}}{\rho - \frac{1}{2}}\right), \tag{2b}$$

and $\widehat{\gamma}$ is the estimated proportion of attentive respondents in the crosswise question (we discuss how to obtain $\widehat{\gamma}$ below).¹³

This bias correction depends on several assumptions. First, we assume that inattentive respondents choose “both or neither is true” with probability 0.5.

ASSUMPTION 1 (Random Pick). *Inattentive respondents choose “both or neither is true” with probability 0.5 (i.e., $\kappa = 0.5$).*

Although many studies appear to take Assumption 1 granted, the survey literature suggests that this assumption may not hold in many situations, because inattentive respondents tend to choose first listed items more than second (or lower) listed ones (Galesic *et al.* 2008; Krosnick 1991). Nevertheless, it is still possible to *design* a survey to achieve $\kappa = 0.5$ regardless of how inattentive respondents choose items. For example, we can achieve this goal by randomizing the order of the listed items in the crosswise model.

The main challenge in estimating the bias is to obtain the estimated proportion of attentive respondents in the crosswise question (i.e., $\widehat{\gamma}$). We solve this problem by adding an *anchor question* to the survey. The anchor question uses the same format as the crosswise question, but contains a sensitive statement with *known* prevalence. Our proposed solution generalizes the idea of “zero-prevalence sensitive items” first introduced by Höglinger and Diekmann (2017).¹⁴ The essence of our approach is to use this additional sensitive statement to (1) estimate the proportion of inattentive respondents in the anchor question and (2) use it to correct for the bias in the crosswise question. For our running example (corruption in Costa Rica), we might consider the following anchor question:

13 Following Yu *et al.* (2008), we impose a logical constrain: $\widehat{\pi}_{BC} = \min(1, \max(0, \widehat{\pi}_{BC}))$. As shown below, $E[\widehat{\lambda}] = \lambda$ and $E[\widehat{\gamma}] = \gamma$, and thus, by the linearity of the expected value operator, $E[\widehat{B}_{CM}] = B_{CM}$.

14 More generally, previous research has used sensitive items with known prevalence only for validation purposes. For example, Höglinger and Diekmann (2017) use receiving an organ and the history of having a rare disease as zero-prevalence sensitive items in the survey about “organ donation and health.” Similarly, Rosenfeld *et al.* (2016) employ official county-level results of an anti-abortion referendum, whereas Kuhn and Vivyan (2018) rely on official turnout records as sensitive items with know prevalence.

Anchor Question: How many of the following statements is true?

Statement C: I have paid a bribe to be on the top of a waiting list for an organ transplant.
 Statement D: My best friend was born in January, February, or March.

- Both statements are true, or neither statement is true.
- Only one statement is true.

Here, Statement C is a sensitive anchor statement whose prevalence is (expected to) be 0.¹⁵ Statement D is a nonsensitive statement whose population prevalence is known to researchers just like the nonsensitive statement in the crosswise question. In addition, “Refuse to Answer” or “Don’t Know” may be included.

Let π' be the *known* proportion for Statement C and p' be the known proportion for Statement D (the “prime symbol” indicates the anchor question). Let λ' (and $1 - \lambda'$) be the population proportion of people selecting “both or neither is true” (and “only one statement is true”). Let γ' be the population proportion of attentive respondents in the anchor question. The population proportion of respondents choosing “both or neither is true” in the anchor question then becomes:

$$\lambda' = \left\{ \pi' p' + (1 - \pi')(1 - p') \right\} \gamma' + \kappa(1 - \gamma'). \tag{3a}$$

Assuming $\kappa = 0.5$ (Assumption 1) and $\pi' = 0$ (zero-prevalence), we can rearrange Equation (3a) as:

$$\gamma' = \frac{\lambda' - \frac{1}{2}}{\pi' p' + (1 - \pi')(1 - p') - \frac{1}{2}} = \frac{\lambda' - \frac{1}{2}}{\frac{1}{2} - p'}. \tag{3b}$$

We can then estimate the proportion of attentive respondents *in the anchor question* as:

$$\widehat{\gamma}' = \frac{\widehat{\lambda}' - \frac{1}{2}}{\frac{1}{2} - p'}, \tag{3c}$$

where $\widehat{\lambda}'$ is the observed proportion of “both or neither is true” and $\mathbb{E}[\widehat{\lambda}'] = \lambda'$ (Online Appendix A.6).

Finally, our strategy is to use $\widehat{\gamma}'$ (obtained from the anchor question) as an estimate of γ (the proportion of attentive respondents in the crosswise question) and plug it into Equation (2b) to estimate the bias. This final step yields the complete form of our bias-corrected estimator:

$$\widehat{\pi}_{BC} = \widehat{\pi}_{CM} - \underbrace{\left(\frac{1}{2} - \frac{1}{2} \left[\frac{\frac{1}{2} - p'}{\widehat{\lambda}' - \frac{1}{2}} \right] \right)}_{\text{Estimated Bias: } \widehat{B}_{CM}(\widehat{\lambda}, \widehat{\lambda}', p, p')} \left(\frac{\widehat{\lambda} - \frac{1}{2}}{p - \frac{1}{2}} \right), \tag{3d}$$

where it is clear that our estimator depends both on the crosswise question ($\widehat{\lambda}$ and p) and the anchor question ($\widehat{\lambda}'$ and p'). For the proposed estimator to be unbiased, we need to make two assumptions (Online Appendix A.7):

ASSUMPTION 2 (Attention Consistency). *The proportion of attentive respondents does not change across the crosswise and anchor questions (i.e., $\gamma = \gamma'$).*

ASSUMPTION 3 (No Carryover). *The crosswise question does not affect respondents’ answers to the anchor question and vice versa (and thus $\mathbb{E}[\widehat{\lambda}] = \lambda$ and $\mathbb{E}[\widehat{\lambda}'] = \lambda'$).*

Assumption 2 will be violated, for example, if the crosswise question has a higher level of inattention than the anchor question. Assumption 3 will be violated, for instance, if asking the

15 More generally, the anchor question can feature any sensitive item whose true prevalence is known (i.e., it need not be 0), although zero-prevalence sensitive items lead to more efficient estimates.

anchor question makes some respondents more willing to bribe a police officer in our running example.

Importantly, researchers can design their surveys to make these assumptions more plausible. For example, they can do so by randomizing the order of the anchor and crosswise questions, making them look alike, and using a statement for the anchor question that addresses the same topic and is equally sensitive as the one in the crosswise question. These considerations also help to satisfy Assumption 3 (we provide more examples and practical advice on how to do this in Online Appendix D).

Finally, we derive the variance of the bias-corrected crosswise estimator and its sample analog as follows (Online Appendix A.4):

$$V(\hat{\pi}_{BC}) = V\left[\frac{\hat{\lambda}}{\hat{\lambda}'}\left(\frac{1}{2} - p'\right)\right] \quad \text{and} \quad \widehat{V}(\hat{\pi}_{BC}) = \widehat{V}\left[\frac{\hat{\lambda}}{\hat{\lambda}'}\left(\frac{1}{2} - p'\right)\right]. \quad (4a)$$

Note that these variances are necessarily larger than those of the conventional estimator, as the bias-corrected estimator also needs to estimate the proportion of (in)attentive respondents from data. Since no closed-form solutions to these variances are available, we employ the bootstrap to construct confidence intervals.

4 Simulation Studies

To examine the finite sample performance of the bias-corrected estimator, we replicate the simulations that appeared in Figure 1 8,000 times. In each simulation, we draw π from the continuous uniform distribution (0.1, 0.45), p and p' from the continuous uniform distribution (0.088, 0.333) (reflecting the smallest and largest values in existing studies), and γ from the continuous uniform distribution (0.5, 1). Finally, we repeat the simulations for different sample sizes of 200, 500, 1,000, 2,000, and 5,000 and evaluate the results. Figure 2 demonstrates that the bias-corrected estimator has a significantly lower bias, smaller root-mean-square error, and higher coverage than the naïve estimator.

The recent survey literature suggests that researchers be cautious when inattentive respondents have different outcome profiles (e.g., political interest) than attentive respondents (Alvarez *et al.* 2019; Berinsky *et al.* 2014). Paying attention to this issue is especially important when dealing with sensitive questions, since respondents who have sensitive attributes may be more likely to give random answers than other respondents. To investigate whether our correction is robust to such an association, we replicate our simulations in Figure 1 by varying the prevalence of sensitive attributes among inattentive respondents while holding the prevalence among attentive

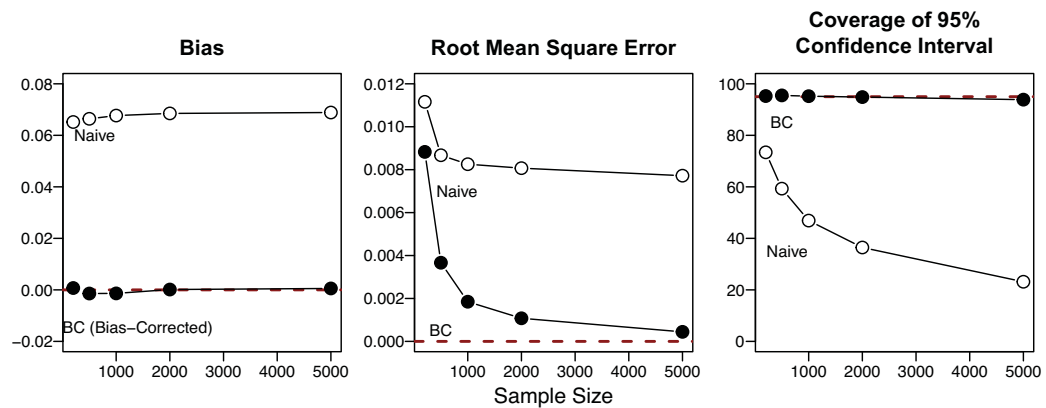


Figure 2. Finite sample performance of the naïve and bias-corrected estimators. *Note:* This figure displays the bias, root-mean-square error, and the coverage of the 95% confidence interval of the naïve and bias-corrected estimators. The bias-corrected estimator is unbiased and consistent and has an ideal level of coverage.

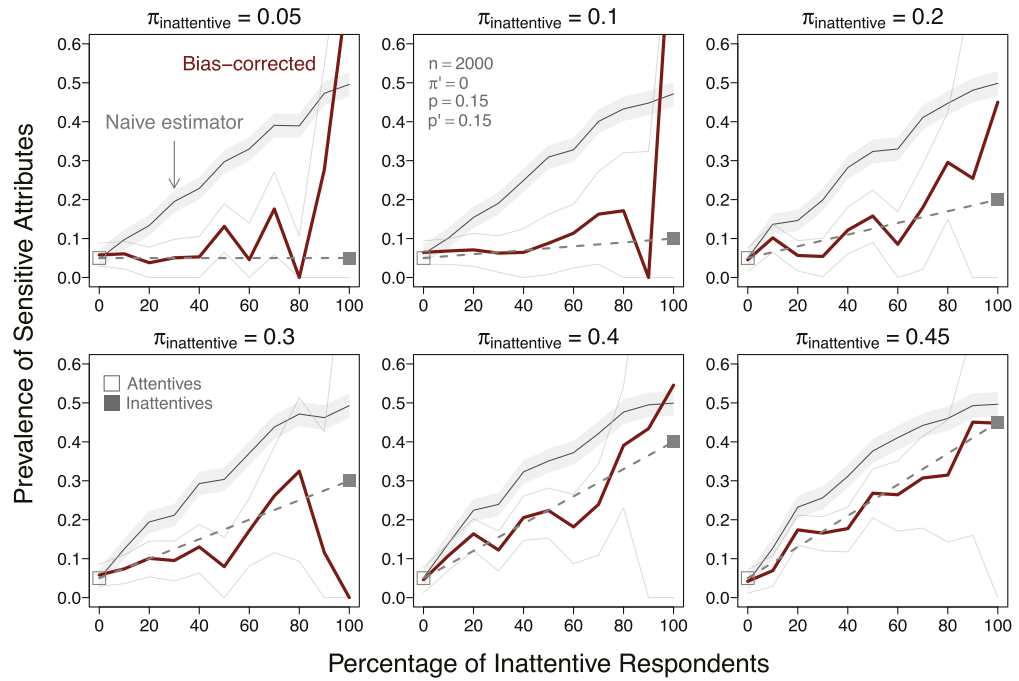


Figure 3. When respondents with sensitive attributes tend to be more inattentive. *Note:* This graph illustrates the naïve and bias-corrected estimators with 95% confidence intervals when the prevalence of sensitive attributes among inattentive respondents ($\pi_{\text{inattentive}}$) is higher than that among attentive respondents ($\pi_{\text{attentive}}$) with simulated data (see the top-middle panel for parameter values). Each panel is based on our simulation in which we set the number of respondents $n = 2,000$, the proportion of a sensitive anchor item $\pi^* = 0$, the proportions for nonsensitive items in the crosswise and anchor questions $p = 0$ and $p' = 0$, respectively. The bias-corrected estimator captures the ground truth (dashed line) even when respondents with sensitive attributes tend to be more inattentive.

respondents constant. Figure 3 shows that our bias-corrected estimator properly captures the true prevalence rate of sensitive attributes regardless of the degree of association between inattentiveness and possession of sensitive attributes. In contrast, the naïve estimator does not capture the ground truth when more than about 10% of respondents are inattentive. More simulation results are reported in Online Appendix B.

5 Extensions of the Bias-Corrected Estimator

5.1 Sensitivity Analysis

While our bias-corrected estimator requires the anchor question, it may not always be available. For such surveys, we propose a sensitivity analysis that shows researchers the sensitivity of their naïve estimates to inattentive respondents and what assumptions they must make to preserve their original conclusions. Specifically, it offers sensitivity bounds for original crosswise estimates by applying the bias correction under varying levels of inattentive respondents. To illustrate, we attempted to apply our sensitivity analysis to all published crosswise studies of sensitive behaviors from 2008 to the present (49 estimates reported in 21 original studies). Figure 4 visualizes the sensitivity bounds for selected studies (see Online Appendix C.1 for full results). For each study, we plot the bias-corrected estimates against varying percentages of inattentive respondents under Assumption 1. Our sensitivity analysis suggests that many studies would not find any statistically significant difference between direct questioning and the crosswise model (echoing Höglinger and Diekmann 2017, 135) unless they assume that less than 20% of the respondents were inattentive.¹⁶

¹⁶ Our software also allows researchers to set values of κ other than 0.5 depending on the nature of their surveys.

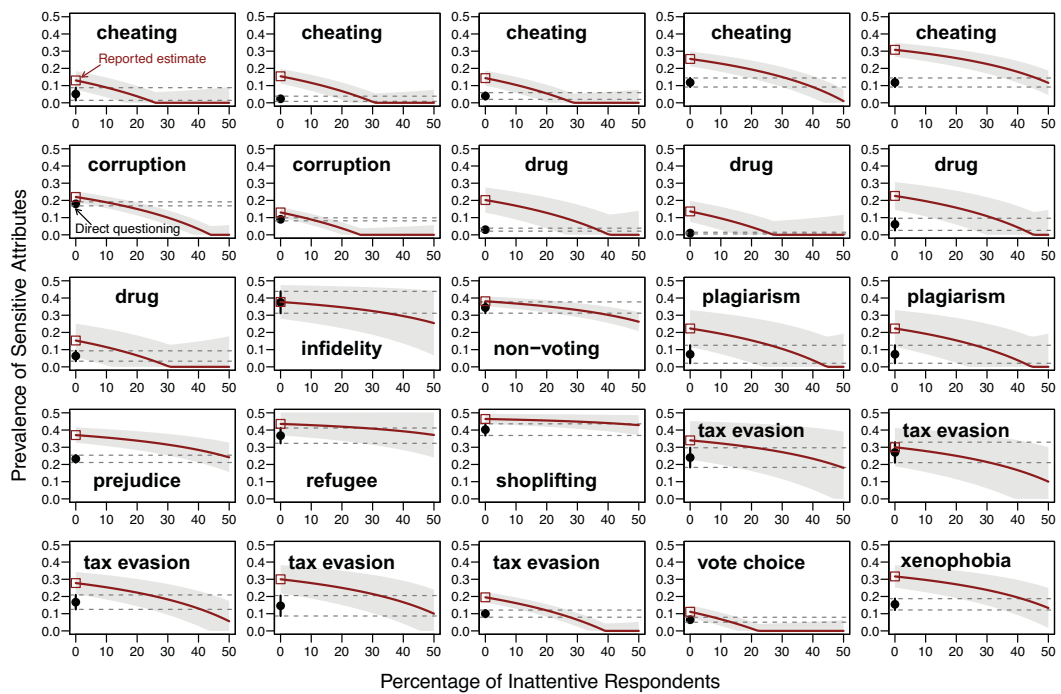


Figure 4. Sensitivity analysis of previous crosswise estimates. *Note:* This figure plots bias-corrected estimates of the crosswise model over varying percentages of inattentive respondents with the estimate based on direct questioning reported in each study.

5.2 Weighting

While the literature on the crosswise model usually assumes that survey respondents are drawn from a finite target population via simple random sampling with replacement, a growing share of surveys are administered with unrepresentative samples such as online opt-in samples (Franco *et al.* 2017; Mercer, Lau, and Kennedy 2018). Online opt-in samples are known to be often unrepresentative of the entire population that researchers want to study (Bowyer and Rogowski 2017; Malhotra and Krosnick 2007), and analysts using such samples may wish to use weighting to extend their inferences into the population of real interest. In this light, we propose a simple way to include sample weights in the bias-corrected estimator. Online Appendix C.2 presents our theoretical and simulation results. The key idea is that we can apply a Horvitz–Thompson-type estimator (Horvitz and Thompson 1952) to the observed proportions in the crosswise and anchor questions (for a similar result without bias correction, see Chaudhuri (2012, 380) and Quatember (2019, 270)).

5.3 Multivariate Regressions for the Crosswise Model

Political scientists often wish to not only estimate the prevalence of sensitive attributes (e.g., corruption in a legislature), but also analyze what kinds of individuals (e.g., politicians) are more likely to have the sensitive attribute and probe whether having the sensitive attribute is associated with another outcome (e.g., reelection). In this vein, regression models for the traditional crosswise model have been proposed in several studies (Gingerich *et al.* 2016; Jann *et al.* 2012; Korndörfer, Krumpal, and Schmukle 2014; Vakilian, Mousavi, and Keramat 2014). Our contribution is to further extend such a framework by (1) enabling analysts to use the latent sensitive attribute *both* as an outcome and a predictor while (2) applying our bias correction. Our software can easily implement these regressions while also offering simple ways to perform post-estimation simulation (e.g., generating predicted probabilities with 95% confidence intervals).

We first introduce multivariate regressions in which the latent variable for having a sensitive attribute is used as an outcome variable. Let $Z_i \in \{0, 1\}$ be a binary variable denoting if respondent

i has a sensitive attribute and $T_i \in \{0, 1\}$ be a binary variable denoting if the same respondent is attentive. Both of these quantities are unobserved *latent* variables. We define the regression model (conditional expectation) of interest as:

$$\mathbb{E}[Z_i | \mathbf{X}_i = \mathbf{x}] = \mathbb{P}(Z_i = 1 | \mathbf{X}_i = \mathbf{x}) = \pi_\beta(\mathbf{x}), \tag{5a}$$

where \mathbf{X}_i is a random vector of respondent i 's characteristics, \mathbf{x} is a vector of realized values of such covariates, and β is a vector of unknown parameters that associate these characteristics with the probability of having the sensitive attribute. Our goal is to make inferences about these unknown parameters and to use estimated coefficients to produce predictions.

To apply our bias correction, we also introduce the following conditional expectation for being attentive:

$$\mathbb{E}[T_i | \mathbf{X}_i = \mathbf{x}] = \mathbb{P}(T_i = 1 | \mathbf{X}_i = \mathbf{x}) = \gamma_\theta(\mathbf{x}), \tag{5b}$$

where θ is a vector of unknown parameters that associate the same respondent's characteristics with the probability of being attentive. We then assume that $\pi_\beta(\mathbf{x}) = \text{logit}^{-1}(\beta\mathbf{X}_i)$ and $\gamma_\theta(\mathbf{x}) = \text{logit}^{-1}(\theta\mathbf{X}_i)$, acknowledging that other functional forms are also possible.

Next, we substitute these quantities into Equation (1c) by assuming $\pi' = 0$ (zero-prevalence for Statement C):

$$\lambda_{\beta, \theta}(\mathbf{X}_i) = \underbrace{\left(\pi_\beta(\mathbf{X}_i)\rho + (1 - \pi_\beta(\mathbf{X}_i))(1 - \rho) \right) \gamma_\theta(\mathbf{X}_i) + \frac{1}{2} \left(1 - \gamma_\theta(\mathbf{X}_i) \right)}_{\text{Conditional probability of choosing "both or neither is true" in the crosswise question}}, \tag{6a}$$

$$\lambda'_\theta(\mathbf{X}_i) = \underbrace{\left(\frac{1}{2} - \rho' \right) \gamma_\theta(\mathbf{X}_i) + \frac{1}{2}}_{\text{Conditional probability of choosing "both or neither is true" in the anchor question}}. \tag{6b}$$

Finally, let $Y_i \in \{0, 1\}$ and $A_i \in \{0, 1\}$ be observed variables denoting if respondent i chooses "both or neither is true" in the crosswise and anchor questions, respectively. Assuming $Y_i \perp\!\!\!\perp A_i | \mathbf{X}_i$ with Assumptions 1-3, we model that Y_i and A_i follow independent Bernoulli distributions with success probabilities $\lambda_{\beta, \theta}(\mathbf{X}_i)$ and $\lambda'_\theta(\mathbf{X}_i)$ and construct the following likelihood function:

$$\begin{aligned} \mathcal{L}(\beta, \theta | \{\mathbf{X}_i, Y_i, A_i\}_{i=1}^n, \rho, \rho') &\propto \prod_{i=1}^n \left\{ \lambda_{\beta, \theta}(\mathbf{X}_i) \right\}^{Y_i} \left\{ 1 - \lambda_{\beta, \theta}(\mathbf{X}_i) \right\}^{1-Y_i} \left\{ \lambda'_\theta(\mathbf{X}_i) \right\}^{A_i} \left\{ 1 - \lambda'_\theta(\mathbf{X}_i) \right\}^{1-A_i} \\ &= \prod_{i=1}^n \left\{ \left(\pi_\beta(\mathbf{X}_i)\rho + (1 - \pi_\beta(\mathbf{X}_i))(1 - \rho) \right) \gamma_\theta(\mathbf{X}_i) + \frac{1}{2} \left(1 - \gamma_\theta(\mathbf{X}_i) \right) \right\}^{Y_i} \\ &\quad \times \left\{ 1 - \left[\left(\pi_\beta(\mathbf{X}_i)\rho + (1 - \pi_\beta(\mathbf{X}_i))(1 - \rho) \right) \gamma_\theta(\mathbf{X}_i) + \frac{1}{2} \left(1 - \gamma_\theta(\mathbf{X}_i) \right) \right] \right\}^{1-Y_i} \\ &\quad \times \left\{ \left(\frac{1}{2} - \rho' \right) \gamma_\theta(\mathbf{X}_i) + \frac{1}{2} \right\}^{A_i} \\ &\quad \times \left\{ 1 - \left[\left(\frac{1}{2} - \rho' \right) \gamma_\theta(\mathbf{X}_i) + \frac{1}{2} \right] \right\}^{1-A_i} \\ &= \prod_{i=1}^n \left\{ \left((2\rho - 1)\pi_\beta(\mathbf{X}_i) + \left(\frac{1}{2} - \rho \right) \right) \gamma_\theta(\mathbf{X}_i) + \frac{1}{2} \right\}^{Y_i} \\ &\quad \times \left\{ 1 - \left[\left((2\rho - 1)\pi_\beta(\mathbf{X}_i) + \left(\frac{1}{2} - \rho \right) \right) \gamma_\theta(\mathbf{X}_i) + \frac{1}{2} \right] \right\}^{1-Y_i} \\ &\quad \times \left\{ \left(\frac{1}{2} - \rho' \right) \gamma_\theta(\mathbf{X}_i) + \frac{1}{2} \right\}^{A_i} \\ &\quad \times \left\{ 1 - \left[\left(\frac{1}{2} - \rho' \right) \gamma_\theta(\mathbf{X}_i) + \frac{1}{2} \right] \right\}^{1-A_i}. \end{aligned} \tag{7}$$

Our simulations show that estimating the above model can recover both primary (β) and auxiliary parameters (θ) (Online Appendix C.3). Online Appendix C.4 presents multivariate regressions in which the latent variable for having a sensitive attribute is used as a predictor.

5.4 Sample Size Determination and Parameter Selection

When using the crosswise model with our procedure, researchers may wish to choose the sample size and specify other design parameters (i.e., π' , p , and p') so that they can obtain (1) high statistical power for hypothesis testing and/or (2) narrow confidence intervals for precise estimation. To fulfill these needs, we develop power analysis and data simulation tools appropriate for our bias-corrected estimator (Online Appendix C.5).

6 Concluding Remarks

The crosswise model is a simple but powerful survey-based tool for investigating the prevalence of sensitive attitudes and behavior. To overcome two limitations of the design, we proposed a simple design-based solution using an anchor question. We also provided several extensions of our proposed bias-corrected estimator. Future research could further extend our methodology by applying it to nonbinary sensitive questions, allowing for multiple sensitive statements and/or anchor questions, handling missing data more efficiently, and integrating our method with more efficient sampling schemes (e.g., Reiber, Schnuerch, and Ulrich 2020).

With these developments, we hope to facilitate the wider adoption of the (bias-corrected) crosswise model in political science, as it may have several advantages over traditional randomized response techniques, list experiments, and endorsement experiments. Future research should also explore how to compare and combine results from the crosswise model and these other techniques.

Our work also speaks to recent scholarship on inattentive respondents in self-administered surveys. While it is increasingly common for political scientists to use self-administered surveys, the most common way of dealing with inattentive respondents is to try to directly identify them through “screener”-type questions. However, a growing number of respondents are experienced survey-takers who may recognize and avoid such “traps” (Alvarez *et al.* 2019). Our method is one example of a different approach to handling inattentive respondents that is less likely to be recognized by respondents, works without measuring individual-level inattentiveness, and does not need to drop inattentive respondents from the sample. Future research should explore whether a similar approach to inattention would work in other question formats.

Acknowledgments

The previous version of this manuscript was titled as “Bias-Corrected Crosswise Estimators for Sensitive Inquiries.” For helpful comments and valuable feedback, we would like to thank Graeme Blair, Gustavo Guajardo, Dongzhou Huang, Colin Jones, Gary King, Shiro Kuriwaki, Jeff Lewis, John Londregan, Yui Nishimura, Michelle Torres, and three anonymous reviewers.

Data Availability Statement

Replication code for this article is available at <https://doi.org/10.7910/DVN/AHWMIL> (Atsusaka and Stevenson 2021). An open-source software R package cWise: A (CROSS)WISE METHOD TO ANALYZE SENSITIVE SURVEY QUESTIONS, which implements our methods, is available at <https://github.com/YukiAtsusaka/cWise>.

Supplementary Material

For supplementary material accompanying this paper, please visit <https://doi.org/10.1017/pan.2021.43>.

References

- Ahlquist, J. S. 2018. "List Experiment Design, Non-Strategic Respondent Error, and Item Count Technique Estimators." *Political Analysis* 26 (1): 34–53.
- Alvarez, R. M., L. R. Atkeson, I. Levin, and Y. Li. 2019. "Paying Attention to Inattentive Survey Respondents." *Political Analysis* 27 (2): 145–162.
- Aronow, P. M., J. Baron, and L. Pinson. 2019. "A Note on Dropping Experimental Subjects Who Fail a Manipulation Check." *Political Analysis* 27 (4): 572–589.
- Atsushaka, Y., and R. T. Stevenson. 2021. "Replication Data for: A Bias-Corrected Estimator for the Crosswise Model with Inattentive Respondents." <https://doi.org/10.7910/DVN/AHWML>, Harvard Dataverse, V1, UNF:6:MzsjbSWLP+p82SZ/w8bjcQ== [fileUNF].
- Berinsky, A. J., M. F. Margolis, and M. W. Sances. 2014. "Separating the Shirkers from the Workers? Making Sure Respondents Pay Attention on Self-Administered Surveys." *American Journal of Political Science* 58 (3): 739–753.
- Blair, G., W. Chou, and K. Imai. 2019. "List Experiments with Measurement Error." *Political Analysis* 27 (4): 455–480.
- Blair, G., A. Coppock, and M. Moor. 2020. "When to Worry About Sensitivity Bias: A Social Reference Theory and Evidence from 30 Years of List Experiments." *American Political Science Review* 114 (4): 1297–1315.
- Blair, G., K. Imai, and J. Lyall. 2014. "Comparing and Combining List and Endorsement Experiments: Evidence from Afghanistan." *American Journal of Political Science* 58 (4): 1043–1063.
- Blair, G., K. Imai, and Y.-Y. Zhou. 2015. "Design and Analysis of the Randomized Response Technique." *Journal of the American Statistical Association* 110 (511): 1304–1319.
- Bowyer, B. T., and J. C. Rogowski. 2017. "Mode Matters: Evaluating Response Comparability in a Mixed-Mode Survey." *Political Science Research and Methods* 5 (2): 295.
- Chaudhuri, A. 2012. "Unbiased Estimation of a Sensitive Proportion in General Sampling by Three Nonrandomized." *Journal of Statistical Theory and Practice* 6 (2): 376–381.
- Corbacho, A., D. W. Gingerich, V. Oliveros, and M. Ruiz-Vega. 2016. "Corruption as a Self-Fulfilling Prophecy: Evidence from a Survey Experiment in Costa Rica." *American Journal of Political Science* 60 (4): 1077–1092.
- Cruz, C. 2019. "Social Networks and the Targeting of Vote Buying." *Comparative Political Studies* 52 (3): 382–411.
- Enzmann, D. 2017. "Chapter 10: Die Anwendbarkeit Des Crosswise-Modells Zur Prüfung Kultureller Unterschiede Sozial erwünschten Antwortverhaltens." In *Methodische Probleme von Mixed-Mode-Ansätzen in der Umfrageforschung*, edited by S. Eifler and F. Faulbaum, 239–277. Wiesbaden: Springer VS.
- Evans, G., and G. King. 2021. "Statistically Valid Inferences from Differentially Private Data Releases, with Application to the Facebook URLs Dataset." *Political Analysis*, to appear.
- Franco, A., N. Malhotra, G. Simonovits, and L. Zigerell. 2017. "Developing Standards for Post-Hoc Weighting in Population-Based Survey Experiments." *Journal of Experimental Political Science* 4 (2): 161–172.
- Frye, T., S. Gehlbach, K. L. Marquardt, and O. J. Reuter. 2017. "Is Putin's Popularity Real?" *Post-Soviet Affairs* 33 (1): 1–15.
- Galesic, M., R. Tourangeau, M. P. Couper, and F. G. Conrad. 2008. "Eye-Tracking Data: New Insights on Response Order Effects and Other Cognitive Shortcuts in Survey Responding." *Public Opinion Quarterly* 72 (5): 892–913.
- Gingerich, D. W., V. Oliveros, A. Corbacho, and M. Ruiz-Vega. 2016. "When to Protect? Using the Crosswise Model to Integrate Protected and Direct Responses in Surveys of Sensitive Behavior." *Political Analysis* 24 (2): 132–156.
- Heck, D. W., A. Hoffmann, and M. Moshagen. 2018. "Detecting Nonadherence Without Loss in Efficiency: A Simple Extension of the Crosswise Model." *Behavior Research Methods* 50 (5): 1895–1905.
- Hoffmann, A., B. Diedenhofen, B. Verschuere, and J. Musch. 2015. "A Strong Validation of the Crosswise Model Using Experimentally-Induced Cheating Behavior." *Experimental Psychology* 62 (6): 403–414.
- Hoffmann, A., J. Meisters, and J. Musch. 2020. "On the Validity of Non-Randomized Response Techniques: An Experimental Comparison of the Crosswise Model and the Triangular Model." *Behavior Research Methods* 52: 1768–1782.
- Hoffmann, A., and J. Musch. 2016. "Assessing the Validity of Two Indirect Questioning Techniques: A Stochastic Lie Detector Versus the Crosswise Model." *Behavior Research Methods* 48 (3): 1032–1046.
- Hoffmann, A., and J. Musch. 2019. "Prejudice Against Women Leaders: Insights from an Indirect Questioning Approach." *Sex Roles* 80 (11): 681–692.
- Höglinger, M., and A. Diekmann. 2017. "Uncovering a Blind Spot in Sensitive Question Research: False Positives Undermine the Crosswise-Model RRT." *Political Analysis* 25 (1): 131–137.
- Höglinger, M., and B. Jann. 2018. "More Is Not Always Better: An Experimental Individual-Level Validation of the Randomized Response Technique and the Crosswise Model." *PLoS One* 13 (8): e0201770.
- Höglinger, M., B. Jann, and A. Diekmann. 2016. "Sensitive Questions in Online Surveys: An Experimental Evaluation of Different Implementations of the Randomized Response Technique and the Crosswise Model." *Survey Research Methods* 10 (3): 171–187.
- Horvitz, D. G., and D. J. Thompson. 1952. "A Generalization of Sampling Without Replacement from a Finite Universe." *Journal of the American Statistical Association* 47 (260): 663–685.

- Jann, B., J. Jerke, and I. Krumpal. 2012. "Asking Sensitive Questions Using the Crosswise Model: An Experimental Survey Measuring Plagiarism." *Public Opinion Quarterly* 76 (1): 32–49.
- Jerke, J., D. Johann, H. Rauhut, and K. Thomas. 2019. "Too Sophisticated Even for Highly Educated Survey Respondents? A Qualitative Assessment of Indirect Question Formats for Sensitive Questions." *Survey Research Methods* 13 (3): 319–351.
- Jerke, J., D. Johann, H. Rauhut, K. Thomas, and A. Velicu. 2020. "Handle with Care: Implementation of the List Experiment and Crosswise Model in a Large-Scale Survey on Academic Misconduct." *Field Methods*. <https://doi.org/10.1177/1525822X20985629>
- John, L. K., G. Loewenstein, A. Acquisti, and J. Vosgerau. 2018. "When and Why Randomized Response Techniques (Fail to) Elicit the Truth." *Organizational Behavior and Human Decision Processes* 148: 101–123.
- Kane, J. G., S. C. Craig, and K. D. Wald. 2004. "Religion and Presidential Politics in Florida: A List Experiment." *Social Science Quarterly* 85 (2): 281–293.
- Korndörfer, M., I. Krumpal, and S. C. Schmukle. 2014. "Measuring and Explaining Tax Evasion: Improving Self Reports Using the Crosswise Model." *Journal of Economic Psychology* 45: 18–32.
- Krosnick, J. A. 1991. "Response Strategies for Coping with the Cognitive Demands of Attitude Measures in Surveys." *Applied Cognitive Psychology* 5 (3): 213–236.
- Kuhn, P. M., and N. Vivyan. 2018. "Reducing Turnout Misreporting in Online Surveys." *Public Opinion Quarterly* 82 (2): 300–321.
- Kuklinski, J. H., M. D. Cobb, and M. Gilens. 1997. "Racial Attitudes and the 'New South.'" *The Journal of Politics* 59 (2): 323–349.
- Kundt, T. 2014. "Applying 'Benford's Law' to the Crosswise Model: Findings from an Online Survey on Tax Evasion." Available at SSRN 2487069.
- Lehrer, R., S. Juhl, and T. Gschwend. 2019. "The Wisdom of Crowds Design for Sensitive Survey Questions." *Electoral Studies* 57: 99–109.
- Lyall, J., G. Blair, and K. Imai. 2013. "Explaining Support for Combatants During Wartime: A Survey Experiment in Afghanistan." *American Political Science Review* 107 (4): 679–705.
- Malhotra, N., and J. A. Krosnick. 2007. "The Effect of Survey Mode and Sampling on Inferences About Political Attitudes and Behavior: Comparing the 2000 and 2004 ANES to Internet Surveys with Nonprobability Samples." *Political Analysis* 15 (3): 286–323.
- Meisters, J., A. Hoffmann, and J. Musch. 2020a. "Can Detailed Instructions and Comprehension Checks Increase the Validity of Crosswise Model Estimates?" *PLoS One* 15 (6): e0235403.
- Meisters, J., A. Hoffmann, and J. Musch. 2020b. "Controlling Social Desirability Bias: An Experimental Investigation of the Extended Crosswise Model." *PLoS One* 15 (12): e0243384.
- Mercer, A., A. Lau, and C. Kennedy. 2018. "For Weighting Online Opt-In Samples, What Matters Most." Pew Research Center.
- Nasirian, M., et al. 2018. "Does Crosswise Method Cause Overestimation? An Example to Estimate the Frequency of Symptoms Associated with Sexually Transmitted Infections in General Population: A Cross Sectional Study." *Health Scope* 7 (3): e55357.
- Oliveros, V., and D. W. Gingerich. 2020. "Lying About Corruption in Surveys: Evidence from a Joint Response Model." *International Journal of Public Opinion Research* 32 (2): 384–395.
- Oppenheimer, D. M., T. Meyvis, and N. Davidenko. 2009. "Instructional Manipulation Checks: Detecting Satisficing to Increase Statistical Power." *Journal of Experimental Social Psychology* 45 (4): 867–872.
- Quatember, A. 2019. "A Discussion of the Two Different Aspects of Privacy Protection in Indirect Questioning Designs." *Quality & Quantity* 53 (1): 269–282.
- Reiber, F., M. Schnuerch, and R. Ulrich. 2020. "Improving the Efficiency of Surveys with Randomized Response Models: A Sequential Approach Based on Curtailed Sampling." *Psychological Methods*. <https://doi.org/10.1037/met0000353>
- Rosenfeld, B., K. Imai, and J. N. Shapiro. 2016. "An Empirical Validation Study of Popular Survey Methodologies for Sensitive Questions." *American Journal of Political Science* 60 (3): 783–802.
- Schnapp, P. 2019. "Sensitive Question Techniques and Careless Responding: Adjusting the Crosswise Model for Random Answers." *methods, data, analyses* 13 (2): 13. <https://doi.org/10.12758/mda.2019.03>
- Vakilian, K., S. A. Mousavi, and A. Keramat. 2014. "Estimation of Sexual Behavior in the 18-to-24-Years-Old Iranian Youth Based on a Crosswise Model Study." *BMC Research Notes* 7 (1): 28.
- Walzenbach, S., and T. Hinz. 2019. "Pouring Water into Wine: Revisiting the Advantages of the Crosswise Model for Asking Sensitive Questions." *Survey Methods: Insights from the Field*, 1–16. <https://doi.org/10.13094/SMIF-2019-00002>
- Warner, S. L. 1965. "Randomized Response: A Survey Technique for Eliminating Evasive Answer Bias." *Journal of the American Statistical Association* 60 (309): 63–69.
- Waubert de Puiseau, B., A. Hoffmann, and J. Musch. 2017. "How Indirect Questioning Techniques May Promote Democracy: A Preelection Polling Experiment." *Basic and Applied Social Psychology* 39 (4): 209–217.
- Yu, J.-W., G.-L. Tian, and M.-L. Tang. 2008. "Two New Models for Survey Sampling with Sensitive Characteristic: Design and Analysis." *Metrika* 67 (3): 251.