

Research Article

A multimethod dating study of ancient permafrost, Batagay megaslump, east Siberia

Julian B. Murton^{a*} , Thomas Opel^b , Phillip Toms^c , Alexander Blinov^d, Margret Fuchs^e , Jamie Wood^c , Andreas Gärtner^f, Silke Merchel^f , Georg Rugel^f , Grigoriy Savvinov^g and Sebastian Wetterich^b 

^aPermafrost Laboratory, Department of Geography, University of Sussex, Brighton BN1 9RH, UK; ^bAlfred Wegener Institute, Helmholtz Centre for Polar and Marine Research, 14473 Potsdam, Germany; ^cLuminescence Dating Laboratory, School of Natural and Social Sciences, University of Gloucestershire, Cheltenham GL50 4AZ, UK; ^dPhysics, Nanotechnology and Telecommunication Institute, Peter the Great St. Petersburg Polytechnic University, 195251 St. Petersburg, Russia; ^eHelmholtz-Zentrum Dresden-Rossendorf, Helmholtz Institute Freiberg for Resource Technology, 09599 Freiberg, Germany; ^fHelmholtz-Zentrum Dresden-Rossendorf, 01328 Dresden, Germany and ^gScience Research Institute of Applied Ecology of the North, North-East Federal University, 677007 Yakutsk, Russia

Abstract

Dating of ancient permafrost is essential for understanding long-term permafrost stability and interpreting palaeoenvironmental conditions but presents substantial challenges to geochronology. Here, we apply four methods to permafrost from the megaslump at Batagay, east Siberia: (1) optically stimulated luminescence (OSL) dating of quartz, (2) post-infrared infrared-stimulated luminescence (pIRIR) dating of K-feldspar, (3) radiocarbon dating of organic material, and (4) ³⁶Cl/Cl dating of ice wedges. All four chronometers produce stratigraphically consistent and comparable ages. However, OSL appears to date Marine Isotope Stage (MIS) 3 to MIS 2 deposits more reliably than pIRIR, whereas the latter is more consistent with ³⁶Cl/Cl ages for older deposits. The lower ice complex developed at least 650 ka, potentially during MIS 16, and represents the oldest dated permafrost in western Beringia and the second-oldest known ice in the Northern Hemisphere. It has survived multiple interglaciations, including the super-interglaciation MIS 11c, though a thaw unconformity and erosional surface indicate at least one episode of permafrost thaw and erosion occurred sometime between MIS 16 and 6. The upper ice complex formed from at least 60 to 30 ka during late MIS 4 to 3. The sand unit above the upper ice complex is dated to MIS 3–2, whereas the sand unit below formed at some time between MIS 4 and 16.

Keywords: Batagay megaslump, Western Beringia, Chlorine dating, Ice complexes, Ice wedges, Luminescence dating, Syngenetic permafrost, Radiocarbon dating, Siberia, Yedoma

(Received 15 May 2020; accepted 1 April 2021)

INTRODUCTION

Sedimentary deposits frozen continuously in permafrost since the Pleistocene preserve important evidence for climate and environmental change and for the interchange of flora and fauna between Eurasia and the Americas. They also help us to evaluate the stability of permafrost and its resilience to Earth system change over the course of the Pleistocene. Ancient permafrost, however, is difficult to date, because its components (mineral particles, ice, organic remains, and liquid water) experience complex histories of warming and cooling and deposition and freezing by different processes and at various depths and times and—in the case of organic remains—often preserve exceptionally well before reworking and refreezing, resulting in ages that are anomalously old relative to the depositional age of the sediment. Such complexities must be considered carefully when

dating the time of permafrost formation or thaw or the minimum age of permafrost preserved in the geologic record.

Dating of Pleistocene permafrost beyond the range of radiocarbon dating is challenging, though several promising methods have been applied. Radiocarbon dating of organic material incrementally buried in aggrading sedimentary sequences has provided some relatively robust chronologies of up to ~40–50 ka for syngenetic (upward) permafrost growth (e.g., Wetterich et al., 2014; Murton et al., 2015). Beyond this age range, methods applied to date permafrost include optically and infrared-stimulated luminescence dating of sand and silt (e.g., Demuro et al., 2013; Opel et al., 2017) back to ~210 ka (Ashastina et al., 2017), radioisotope disequilibria (²³⁰Th/²³⁴U) of frozen peat to ~220 ka (Wetterich et al., 2016, 2019), uranium isotope (²³⁴U/²³⁸U) series of ground ice to ~200 ka (Ewing et al., 2015), and palaeomagnetic analysis of silty to sandy deposits to ~200 ka (Andreev et al., 2004). Still older ages of ~610 ka have been obtained from ³⁶Cl/Cl ratios of ground ice (Blinov et al., 2009), and ~740 ka from fission track dating of tephra above ground ice (e.g., Froese et al., 2008; Davies et al., 2016). Nonetheless, some of these applications of dating methods are in early stages of development, and calculated

*Corresponding author at: Permafrost Laboratory, Department of Geography, University of Sussex, Brighton BN1 9RH, UK. E-mail address: j.b.murton@sussex.ac.uk (J.B. Murton).

Cite this article: Murton JB et al. (2022). A multimethod dating study of ancient permafrost, Batagay megaslump, east Siberia. *Quaternary Research* 105, 1–22. <https://doi.org/10.1017/qua.2021.27>

ages have large uncertainties. Moreover, increasingly old permafrost deposits are rare (due to erosion and/or thaw) or tend to be deeply buried. Overall, therefore, information about the age, nature, and distribution of permafrost preserved since before the last interglaciation (~132–117 ka)—that is, ancient permafrost—is scarce.

Here, we determine the age of ancient permafrost at the Batagay megaslump, east Siberia, in a multimethod dating study. The slump headwall exposes four generations of ice wedges and sand–ice (composite) wedges that formed synchronously with permafrost growth and two woody beds that represent the remains of two episodes of taiga forest development before the modern Holocene forest. Thus, the ancient permafrost at Batagay potentially provides one of the longest—but discontinuous—terrestrial records of Pleistocene environments in western Beringia (east Siberia). We report results from optically stimulated luminescence (OSL) dating of quartz grains and post-infrared infrared (pIRIR) luminescence dating of K-feldspar grains from aeolian sand that has remained continuously frozen since ice wedges formed concurrently with deposition (syngenetically). Additionally, we use radiocarbon methods to date organic macroremains from ice wedges and host sediments and provide a starting point (base age) for $^{36}\text{Cl}/\text{Cl}$ dating of the wedge ice itself. Both $^{36}\text{Cl}/\text{Cl}$ and radiocarbon dating methods take advantage of accelerator mass spectrometry (AMS). This study builds on earlier work at the Batagay megaslump (Ashastina et al., 2017; Murton et al., 2017b; Opel et al., 2019; Vasil'chuk and Vasil'chuk, 2019; Vasil'chuk et al., 2020) and integrates all available dating results for the permafrost sequence exposed there. The aims of this study are (1) to test several independent methods for dating of ancient permafrost, (2) to develop a suitable multimethod framework to date the ancient permafrost deposits at the Batagay megaslump, and (3) to improve the chronological constraints for the latter. Additionally, we provide the first application of $^{36}\text{Cl}/\text{Cl}$ dating of ground ice with independent testing of ages using other dating methods. Our study provides the framework for planning future, systematic dating of the site.

STUDY SITE

The Batagay megaslump (67.58°N, 134.77°E) is the largest known retrogressive thaw slump in the world, measuring ~1.8 km long and >0.8 km wide in 2019. The slump has developed over the past five decades and was first studied in 2011 (Kunitskiy et al., 2013). It is located on a hillslope at an elevation of ~330 m above sea level (for the highest part of the headwall), near the town of Batagay, in the Yana Highlands of northern Yakutia (Fig. 1). This region is characterized by a strongly continental climate and increasing temperature and precipitation since the mid-twentieth century. At Batagay, the mean annual air temperature over the period 1988–2017 was –12.4°C, with a mean winter (December to February) air temperature of –40.0°C and a mean summer (June to August) air temperature of 13.7°C (Murton et al., in press). About half of the mean annual precipitation of 203 mm (i.e., 106 mm) falls in summer. The permafrost is continuous and ~200 to 500 m thick (fig. 15.2 in Yershov, 1998), with mean annual ground temperatures of –8.0°C to –5.5°C and active-layer thicknesses between 0.2 and 1.2 m, depending on soil and vegetation types (Ivanova, 2003).

The vegetation near Batagay comprises mainly open woodlands dominated by Cajander larch (*Larix cajanderi*) with birch (*Betula exilis* or *Betula divaricata*) undergrowth and a lichen–

green moss ground cover. Birch (*Betula pendula*) occurs in some burnt areas. Higher upland areas are typically covered by thickets of dwarf stone pine (*Pinus pumila*), mountain tundra, or stony debris. Permafrost podburs are the most common soil type beneath open woodlands of larch, and underdeveloped stony soils characterize rubbly mountain areas. Peaty and humus–gley soils underlie the bottoms of small river valleys, whereas the terraced floodplains of the Yana and Batagay rivers contain underdeveloped sandy soils and alluvial permafrost soils.

In palaeoenvironmental terms, the study region has probably remained unglaciated throughout the late Cenozoic (Batchelor et al., 2019) and belonged to the ice-free subcontinent of Beringia (Fig. 1a). A sequence of permafrost deposits about 60 m thick crops out in the slump and can be divided into seven stratigraphic units (Fig. 2; Table 1) and summarised as follows. Above slate bedrock is (1) a diamicton at least 0.5 m thick, containing abundant clasts of slate, that is interpreted as colluvium. The overlying (2) lower ice complex (~3–7 m thick) contains woody material—including in situ tree stumps as well as woody debris related to erosional features within the ice complex—and ice wedges at least 2–3 m high and 1 m wide truncated along their tops by a thaw unconformity. There are also traces of an erosional surface overlain by gravelly deposits along the top of this unit. The woody material is thought to represent the remains of a forest bed. Above the lower ice complex, (3) a lower sand unit (≤20 m thick) of pore-ice-cemented fine sand interpreted as aeolian sand-sheet deposits contains tall, narrow syngenetic ice wedges and composite wedges up to 0.5 m wide. In places, (4) prominent lenses of woody debris (≤3 m thick) sharply overlie the lower sand unit below a prominent unconformity (erosional surface). The woody debris is interpreted as a second forest bed and is overlain by few metres of sand at the base of (5) an upper ice complex (~20–25 m thick) dominated by large syngenetic ice wedges up to a few metres wide and at least several metres high set within silty and sandy deposits. The upper ice complex probably formed as a result of a substantial increase in snow meltwater supply into thermal contraction cracks relative to the limited water supply to the narrow wedges in the lower sand unit. The upper ice complex plunges downslope beneath and partly grades into (6) the upper sand unit (~20–30 m thick, and similar in nature and interpretation to the lower one), which is best exposed near the slump exit. Capping the sequence is (7) a near-surface layer of brown sand and modern soil (~1–3 m thick).

METHODS AND DATA

Fieldwork

Sediment and ground-ice samples for dating in the present study were taken during fieldwork in summer 2017 based on cryostratigraphic observations that largely confirm earlier interpretations (Ashastina et al., 2017, 2018; Murton et al., 2017b). We focused on sampling at two sections in different parts of the exposure (Fig. 2): (1) the contact of the lower ice complex to the lower sand in a gully of the icy badlands on the slump bottom (section 1, Fig. 3) and (2) the upper ice complex and the upper sand in a headwall slope in the southern part of the slump (section 2, Fig. 4).

Samples for luminescence dating (n=7) were taken from freshly thawed undisturbed sediments using a metal cylinder. The samples were immediately shielded from sunlight, tightly sealed, and stored cool until analysis. We additionally sampled

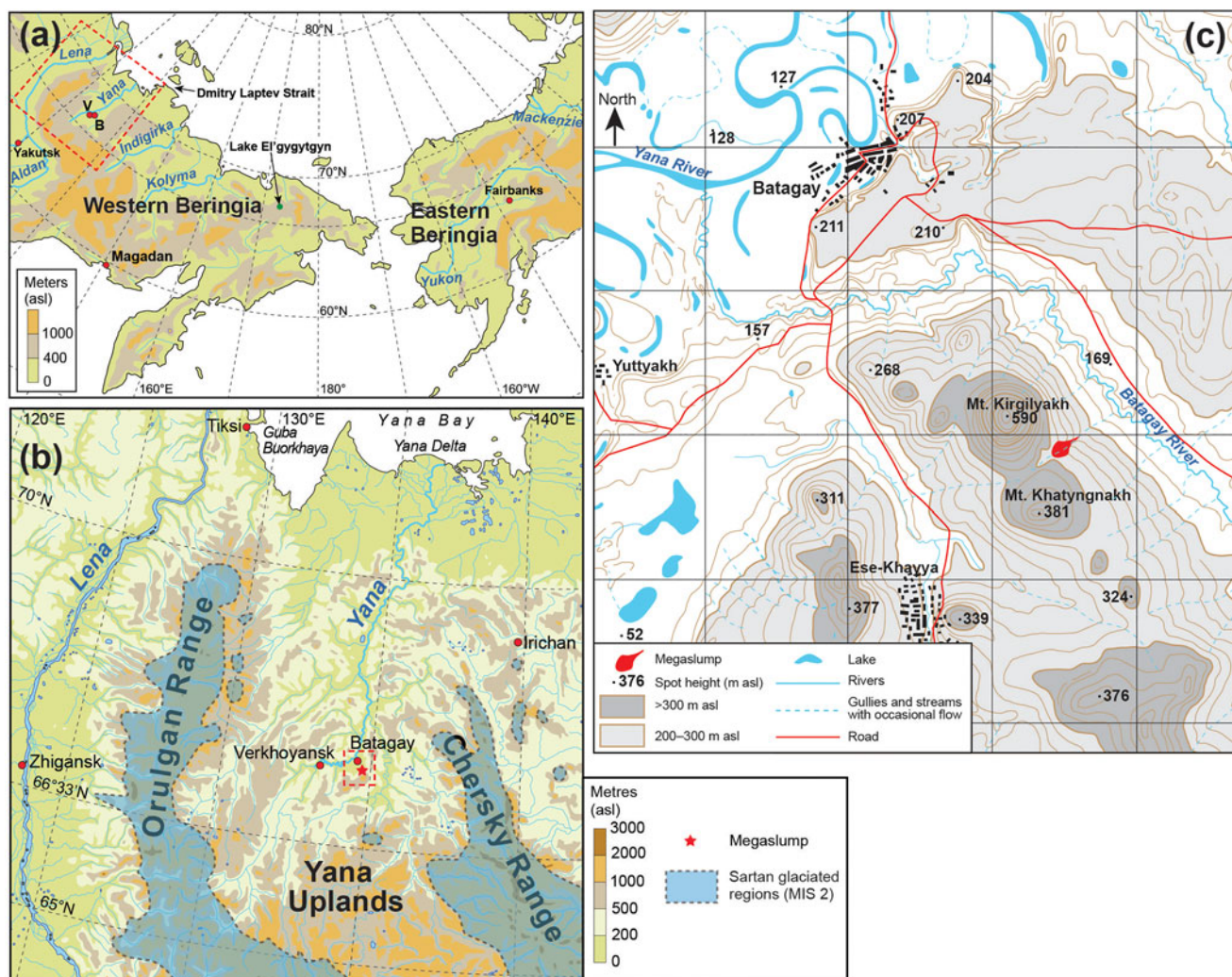


Figure 1. (a) Location map of Beringia. Red dashed box shows location of panel b. (b) Location map showing the topographic setting of the Batagay megaslump within the Yana River basin, northern Yakutia. Glacial limits during the last (Sartan) glaciation, according to Glushkova (2011), are indicated. Red dashed box shows location of panel c. (c) Topographic map of the Batagay region, showing the location of the megaslump on a northeast-facing hillslope. Contours at 20 m intervals; grid spacing at 4 km.

the frozen sediments for analysis of radionuclide concentrations by gamma spectrometry and for measurements of ice content. We sampled ice wedges for $^{36}\text{Cl}/\text{Cl}$ dating ($n = 4$) by chainsaw. In total, we cut ~ 2 kg of ice and stored it cool in sample bags. After melting the ice, we filled two 1 L low-density polyethylene bottles with the meltwater and kept them cool until analysis. Organic macroremains were picked from sediment and wedge-ice samples for radiocarbon dating ($n = 12$; Opel et al., 2019; this study).

Luminescence dating

In luminescence dating, age estimates of the time of sedimentation (Huntley et al., 1985) are premised upon reduction of the time-dependent signal in minerals (OSL) to zero through exposure to sunlight. Once sediment is buried, the OSL signal accrues through exposure to natural litho- and cosmogenic radiation. The total burial dose related to the observed luminescence signal intensity is found by estimating the dose of laboratory radiation (equivalent dose) that produces luminescence equal to that

measured from the sample of interest. Based on this dose-luminescence response relationship, the dosimeter (typically quartz and feldspar) can then be converted to a chronometer by estimating the rate of dose absorption. The luminescence age is generally defined by the quotient:

$$\text{Age} = \frac{\text{equivalent dose } (D_e, \text{Gy})}{\text{total environmental dose rate } (D_r, \text{Gy/ka})} \quad (\text{Eq. 1})$$

General accounts of the method can be found in, for example, Aitken (1998) and Bøtter-Jensen et al. (2003). Quartz is typically the mineral of choice in OSL dating, owing principally to the temporal stability of its luminescence signal and rapid resetting of this signal by sunlight during sediment transport before deposition (e.g., Wallinga, 2008; Wintle, 2008). However, saturation of the quartz signal usually limits its application to samples with burial doses of < 200 Gy (Wintle, 2008) and thus restricts the maximum datable age to 100–200 ka (assuming a D_r range of 2 to 1 Gy/ka, respectively). Feldspars saturate at higher doses compared with

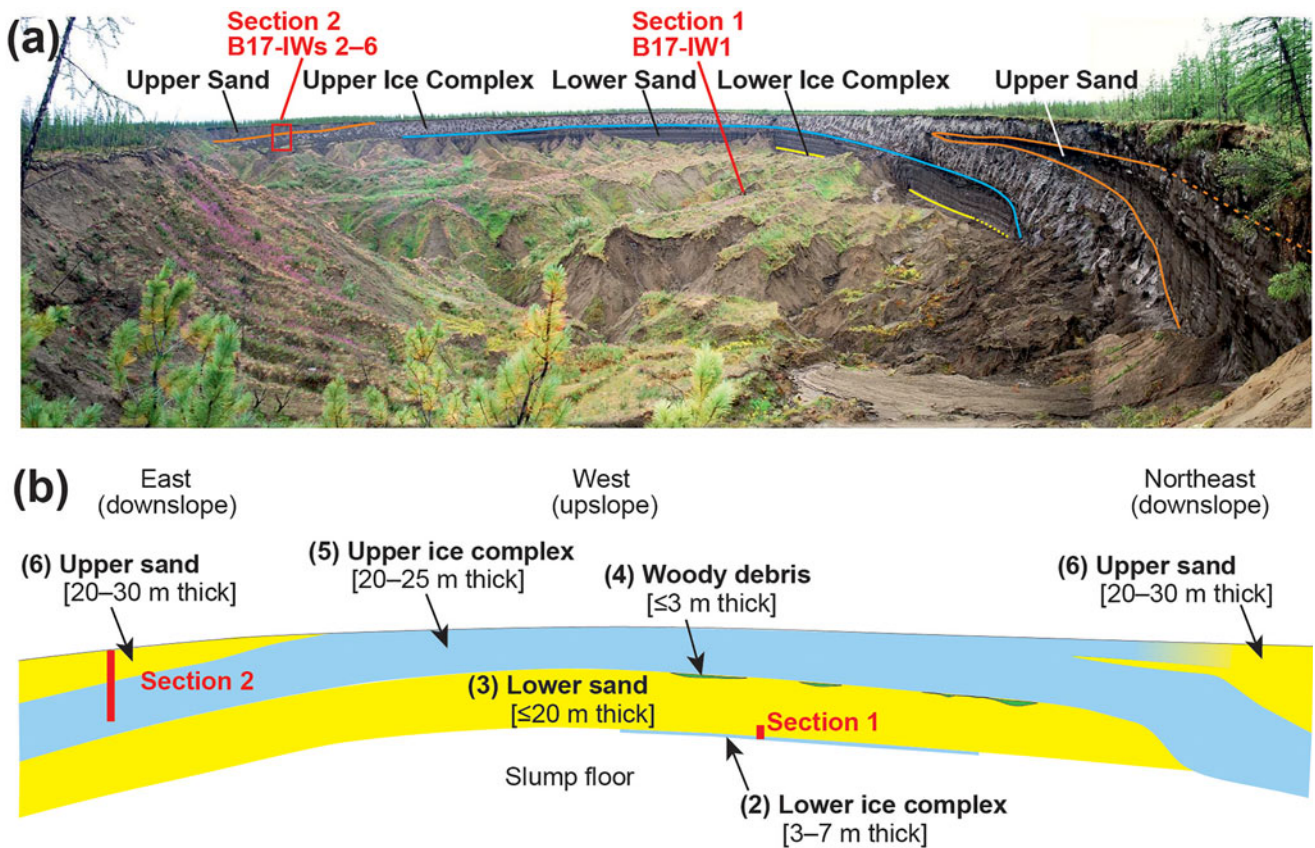


Figure 2. (a) Panoramic photograph of the Batagay megaslump showing the main stratigraphic units and locations of sections 1 and 2. (b) Schematic stratigraphic section of the exposed units along the slump headwall, with approximate positions of the studied sections. Numbers 2 to 6 represent cryostratigraphic units summarised in Table 1. Modified from Opel *et al.* (2019).

Table 1. Stratigraphic units of the permafrost sequence exposed in the Batagay megaslump.^a

Unit and approximate thickness (m)	Description	Interpretation	Previous dating results (range) ^b	Preliminary age interpretation ^c
7. Near-surface sand (1–3)	Ice-cemented sand	Colluvium	390 cal yr BP	MIS 1 (Holocene)
6. Upper sand (20–30)	Ice-cemented fine sand with narrow syngenetic ice wedges and composite wedges; unit thickens downslope	Aeolian sand sheet with reworking by slopewash	15,090 to 42,390 cal yr BP (to >42,100 cal yr BP)	MIS 3–2
5. Upper ice complex (20–25)	Yedoma containing large syngenetic ice wedges	Growth of large syngenetic ice wedges	27,160 to 52,210 cal yr BP (to >51,920 cal yr BP)	MIS 4–3
4. Woody debris (≤3)	Discontinuous lenses of woody debris cut down into lower sand unit	Forest bed above erosional surface (disconformity)	51,310 cal yr BP (to >52,340 cal yr BP)	MIS 5e (last interglaciation)
3. Lower sand (≤20)	Ice-cemented fine sand with narrow syngenetic ice wedges and composite wedges	Aeolian sand sheet with forest bed near top	>123,200 yr (OSL) 142,800 ± 25,300 yr (OSL) 210,000 ± 23,000 yr (IRSL)	MIS 6 or older
2. Lower ice complex (3–7)	Contains ice wedges, angular clasts of slate, in situ tree stumps, and woody debris; thaw unconformity along top	Growth of large syngenetic ice wedges; forest bed near top; disconformity along top of unit	n/a	MIS 7 or older
1. Diamicton (≥0.5)	Contains abundant clasts of slate and overlies slate bedrock	Colluvium, locally derived from bedrock	n/a	MIS 7 or older

^aBased on Ashastina *et al.* (2017), Murton *et al.* (2017b), Opel *et al.* (2019), Vasil'chuk and Vasil'chuk (2019), Vasil'chuk *et al.* (2020), and field observations in spring 2019.

^bIRSL, infrared-stimulated luminescence; OSL, optically stimulated luminescence; n/a, not analysed.

^cMIS, Marine Isotope Stage.

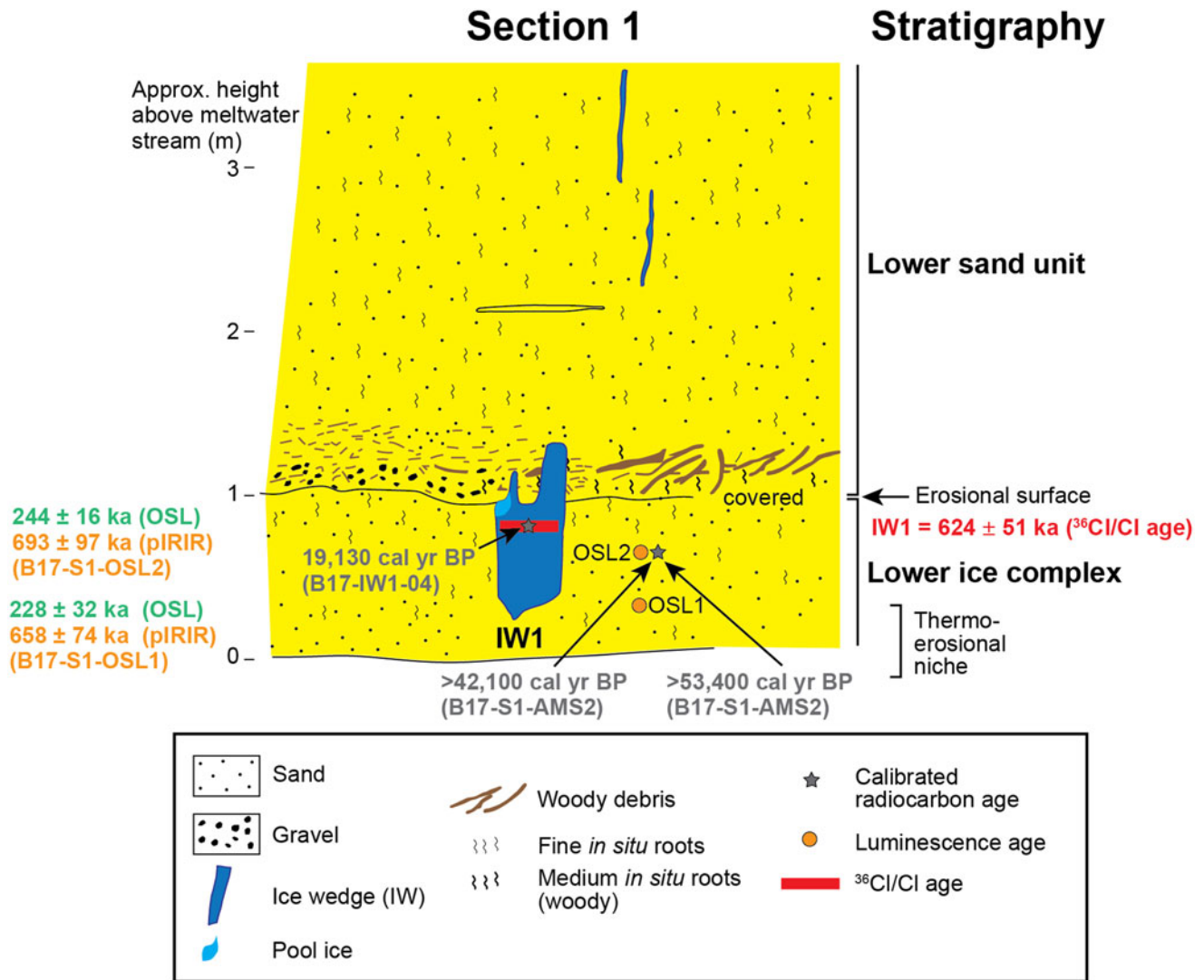


Figure 3. Schematic cryostratigraphic sketch of section 1, showing age estimates. Radiocarbon ages are given as calibrated median ages where available or otherwise as uncalibrated ages (see Table 5). The post-infrared infrared-stimulated luminescence (pIRIR) and optically stimulated luminescence (OSL) ages are associated with the orange circles labelled “OSL1” and “OSL2.”

quartz, but anomalous fading of their infrared-stimulated luminescence (IRSL) signal (Wintle, 1973; Huntley and Lamothe, 2001) has complicated the use of these minerals due to the need for additional corrections (e.g., Auclair et al., 2003; Kars et al., 2008). Because the anomalous fading rate displayed dose-dependent behaviour (e.g., Li and Li, 2008), overestimation was reported for corrected ages, especially in older samples (e.g., Li and Li, 2011). However, the discovery of an IR signal with significantly reduced fading in K-feldspars (pIRIR; Thomsen et al., 2008) and the subsequent development of measurement protocols (e.g., Buylaert et al., 2009; Li et al., 2014b) have recently encouraged wider adoption of these minerals and provide the potential to date samples with burial doses of up to 1500 Gy (e.g., Wintle, 2008; Zhang and Li, 2020). Given the D_f values present at the site (~2–3 Gy/ka; Table 2) and the potential for quartz samples at depth to be close to saturation, we adopted a paired quartz OSL and K-feldspar pIRIR approach to luminescence dating.

Sample preparation

Luminescence samples were prepared and measured in the Luminescence Dating Laboratory, University of Gloucestershire. To preclude optical erosion of the signal, the sediment samples were collected in opaque tubing and processed under controlled laboratory illumination provided by Encapsulite RB-10 (red) filters. The fine-sand fraction (125–180 μm) of six samples was segregated and subjected to acid and alkaline digestion (10% HCl, 15% H₂O₂) to remove carbonate and organic components, respectively. Density separations at 2.53 and 2.58 g/cm³ were undertaken to isolate the K-feldspar fraction. Minerals >2.58 g/cm³ were then subjected to an HF acid digestion (40%, 60 min) to etch the outer 10–15 μm layer affected by alpha radiation; 10% HCl was then added to remove acid-soluble fluorides, and the sample was then dried and resieved. Quartz was concentrated from the remaining heavy-mineral fraction using a density separation at 2.68 g/cm³. Sample mass proved a constraint in this study, with a dry mass of ~450 g yielding ~70 mg to, exceptionally, 250 mg of each mineral type

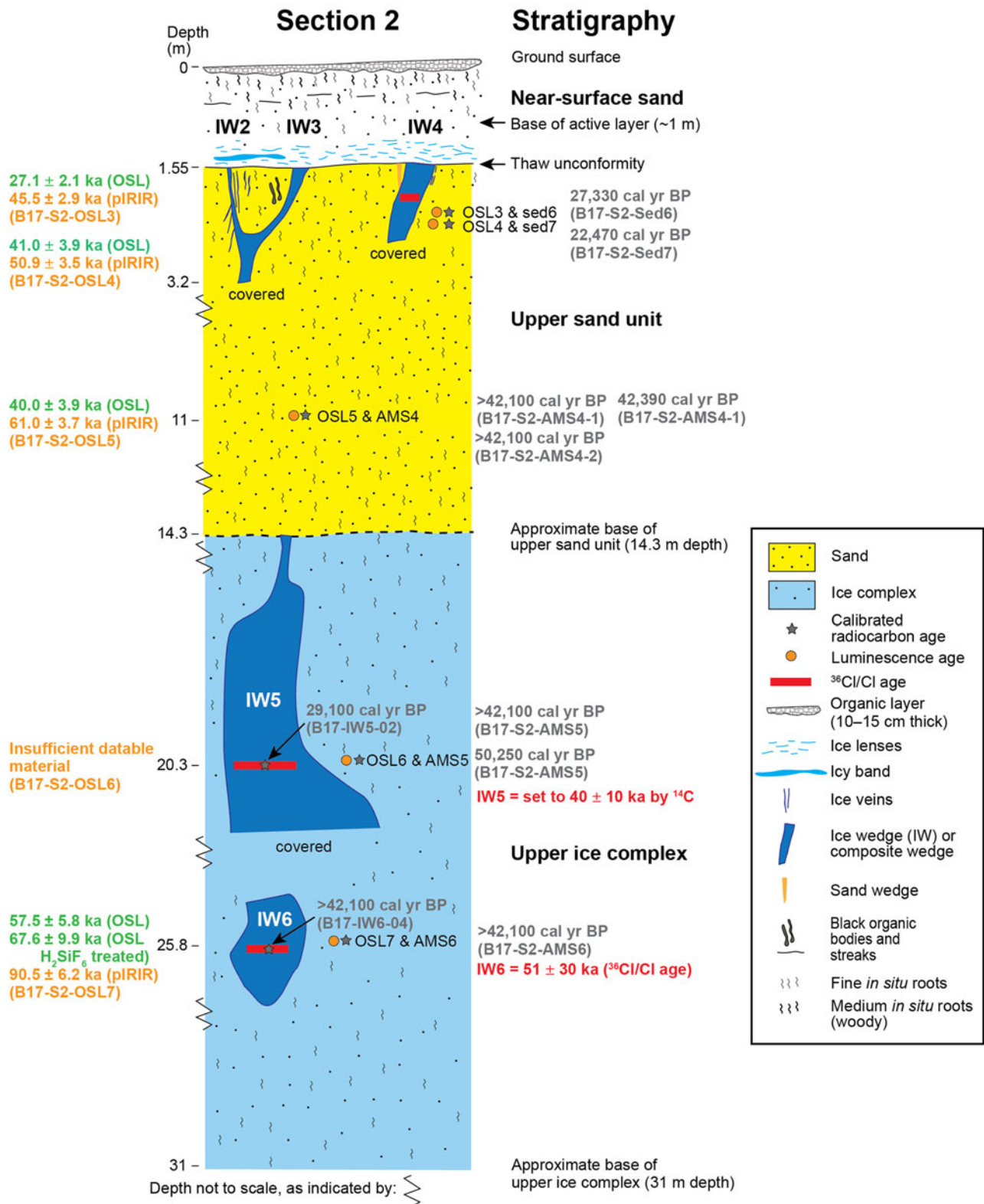


Figure 4. Schematic cryostratigraphic sketch of section 2, showing age estimates. Radiocarbon ages are given as calibrated median ages where available or otherwise as uncalibrated ages (see Table 5). The post-infrared infrared-stimulated luminescence (pIRIR) and optically stimulated luminescence (OSL) ages are associated with the orange circles labelled “OSL3” to “OSL7.”

within the modal sand fraction (125–180 μm). Depending on the mass remaining after sample preparation, up to 12 multigrain 8 mm aliquots of quartz and K-feldspar were mounted on stainless-

steel cups and aluminium discs, respectively, to determine D_e values. Owing to limited quantities of quartz and K-feldspar, sample GL17121 was not progressed to D_e measurement. Given the

Table 2. Dose-rate parameters from 125–180 μm quartz and K-feldspar isolates for luminescence dating.

Lab code	Mineral	Overburden (m)	Gravimetric moisture content (%)	Ge γ -spectrometry (ex situ)			$^{226}\text{Ra}/^{238}\text{U}$	Internal β D_r (Gy/ka)	External α D_r (Gy/ka)	External β D_r (Gy/ka)	External γ D_r (Gy/ka)	Cosmic D_r (Gy/ka) ^a
				K (%)	Th (ppm)	U (ppm)						
GL17118	Quartz	2.1	38 \pm 2.5	1.77 \pm 0.11	9.01 \pm 0.55	1.81 \pm 0.14	1.05 \pm 0.14	—	—	1.19 \pm 0.06	0.74 \pm 0.03	0.15 \pm 0.01
	K-feldspar							0.53 \pm 0.10	0.18 \pm 0.05			
GL17119	Quartz	2.3	72 \pm 2.5	1.91 \pm 0.12	8.33 \pm 0.55	1.82 \pm 0.14	0.84 \pm 0.11	—	—	0.97 \pm 0.05	0.59 \pm 0.03	0.15 \pm 0.01
	K-feldspar							0.53 \pm 0.10	0.13 \pm 0.04			
GL17120	Quartz	11.0	30 \pm 2.5	1.77 \pm 0.11	8.37 \pm 0.55	2.02 \pm 0.14	0.93 \pm 0.13	—	—	1.28 \pm 0.07	0.79 \pm 0.04	0.05 \pm 0.01
	K-feldspar							0.53 \pm 0.10	0.19 \pm 0.05			
GL17121	Quartz	20.3	46 \pm 2.0	1.86 \pm 0.11	9.32 \pm 0.57	2.06 \pm 0.15	0.78 \pm 0.10	—	—	1.18 \pm 0.06	0.73 \pm 0.04	0.02 \pm 0.00
	K-feldspar							0.53 \pm 0.10	0.18 \pm 0.05			
GL17172	Quartz	25.8	34 \pm 2.5	1.83 \pm 0.11	8.54 \pm 0.54	1.83 \pm 0.14	0.99 \pm 0.14	—	—	1.25 \pm 0.07	0.76 \pm 0.03	0.02 \pm 0.00
	K-feldspar							0.53 \pm 0.10	0.18 \pm 0.05			
GL17117	Quartz	49.5	33 \pm 2.5	1.62 \pm 0.11	8.87 \pm 0.55	1.97 \pm 0.14	0.96 \pm 0.11	—	—	1.18 \pm 0.07	0.76 \pm 0.03	0.01 \pm 0.00
	K-feldspar							0.53 \pm 0.10	0.19 \pm 0.05			
GL17171	Quartz	50.0	34 \pm 2.5	1.77 \pm 0.11	7.97 \pm 0.54	1.75 \pm 0.14	1.13 \pm 0.16	—	—	1.21 \pm 0.07	0.73 \pm 0.03	0.01 \pm 0.00
	K-feldspar							0.53 \pm 0.10	0.17 \pm 0.05			

^aCosmic dose rate for $\sim 68^\circ\text{N}$, 135°E , 300 m above sea level.

Table 3. Luminescence parameters from 125–180 μm quartz and K-feldspar isolates for dating.

Field code	Lab code	Mineral	Preheat ($^{\circ}\text{C}$ for 10 s) ^a	Dose recovery ratio	No. of aliquots (for D_e)	Low dose repeat ratio	High dose repeat ratio	Post-IR OSL ratio ^b	D_0 (Gy)	D_e overdispersion (%)	D_e (Gy)	Total D_r (Gy/ka)	Age (ka) ^c
B17-S2-OSL3	GL17118	Quartz	180	1.02 \pm 0.05	7	0.98 \pm 0.03	1.03 \pm 0.03	0.35 \pm 0.02	240.5 \pm 11.1	17 \pm 5	55.9 \pm 3.8	2.07 \pm 0.07	27.1 \pm 2.1
		K-feldspar	—	1.18 \pm 0.04	8	1.01 \pm 0.02	0.98 \pm 0.01	—	177.8 \pm 6.7	6 \pm 2	126.8 \pm 5.5	2.79 \pm 0.13	45.5 \pm 2.9
B17-S2-OSL4	GL17119	Quartz	240	0.92 \pm 0.03	12	1.04 \pm 0.04	1.10 \pm 0.03	0.59 \pm 0.03	148.3 \pm 15.0	29 \pm 6	69.4 \pm 6.1	1.69 \pm 0.06	41.0 \pm 3.9
		K-feldspar	—	1.11 \pm 0.02	10	1.02 \pm 0.03	0.99 \pm 0.02	—	198.1 \pm 10.1	9 \pm 3	120.2 \pm 5.7	2.36 \pm 0.12	50.9 \pm 3.5
B17-S2-OSL5	GL17120	Quartz	200	0.98 \pm 0.03	12	1.03 \pm 0.04	1.02 \pm 0.03	0.48 \pm 0.02	172.3 \pm 19.9	30 \pm 6	83.9 \pm 7.6	2.10 \pm 0.08	40.0 \pm 3.9
		K-feldspar	—	1.17 \pm 0.04	11	1.00 \pm 0.03	0.98 \pm 0.02	—	190.6 \pm 7.8	2 \pm 2	173.0 \pm 6.5	2.84 \pm 0.13	61.0 \pm 3.7
B17-S2-OSL6	GL17121	Quartz	—	—	—	—	—	—	—	—	—	—	—
		K-feldspar	—	—	—	—	—	—	—	—	—	—	—
B17-S2-OSL7	GL17172	Quartz	180	0.99 \pm 0.04	12	1.05 \pm 0.03	1.01 \pm 0.02	0.61 \pm 0.02	136.5 \pm 9.1	31 \pm 6	115.6 \pm 10.9	2.01 \pm 0.08	57.5 \pm 5.8
		Quartz (H ₂ SiF ₆ treated)	—	—	—	0.97 \pm 0.08	1.04 \pm 0.08	0.99 \pm 0.08	103.8 \pm 8.4	30 \pm 10	135.8 \pm 19.2	—	67.6 \pm 9.9
		K-feldspar	—	0.95 \pm 0.06	12	0.98 \pm 0.13	1.06 \pm 0.09	—	156.9 \pm 45.0	Zero	247.3 \pm 12.1	2.73 \pm 0.13	90.5 \pm 6.2
B17-S1-OSL2	GL17117	Quartz	220	0.94 \pm 0.07	12	1.00 \pm 0.06	1.00 \pm 0.04	0.45 \pm 0.03	253.2 \pm 16.9	13 \pm 4	468.0 \pm 23.9	1.92 \pm 0.07	244 \pm 16
		K-feldspar	—	—	8	0.95 \pm 0.06	1.01 \pm 0.05	—	256.5 \pm 16.4	31 \pm 10	1843.2 \pm 232.8	2.66 \pm 0.13	693 \pm 97
B17-S1-OSL1	GL17171	Quartz	200	1.01 \pm 0.05	10	1.10 \pm 0.08	1.03 \pm 0.06	0.54 \pm 0.04	292.2 \pm 2.7	45 \pm 10	438.5 \pm 59.6	1.93 \pm 0.07	228 \pm 32
		K-feldspar	—	1.26 \pm 0.06	7	0.96 \pm 0.07	0.97 \pm 0.06	—	244.3 \pm 14.6	23 \pm 7	1738.9 \pm 176.2	2.64 \pm 0.13	658 \pm 74

^aLexsyg smart substrate temperature.^bIR, infrared; OSL, optically stimulated luminescence.^cAge estimates expressed relative to 2017. Uncertainties in age are quoted at 1 σ confidence, are based on analytical errors, and reflect combined systematic and experimental variability.

Table 4. K-feldspar IR₅₀, pIRIR₂₀₀, and pIRIR₂₅₀ g values calculated for samples GL17121 and GL17171.

Lab code	g values (%/decade)		
	IR ₅₀	pIRIR ₂₀₀	pIRIR ₂₅₀
GL17121	2.96 ± 1.30	0.38 ± 1.35	-0.97 ± 1.98
GL17171	8.30 ± 0.98	3.44 ± 1.02	1.33 ± 1.47

magnitude of D_e values above 120 Gy, and thus the relatively old ages previously reported for the site by Ashastina et al. (2017), intergrain analysis using single-grain or small aliquots was not considered of utility in this study. In this it is assumed that intergrain D_e distribution is dominated by microdosimetric effects, with the passage of time serving to amplify the influence of spatial variations in dose rate over D_e variation forced by partial bleaching and pedoturbation. Bulk subsamples for D_r assessment were homogenized in a mill, with 50 g then placed in a polystyrene pot with a polyethylene lid and stored for 3 weeks to enable radon stabilisation.

Measurement

Quartz and feldspar naturally exhibit marked intersample variability in luminescence per unit dose (sensitivity). Therefore, the estimation of dose absorbed since burial requires calibration of the natural signal using known doses of laboratory radiation. D_e values were quantified using a single-aliquot regenerative-dose (SAR) protocol based on Murray and Wintle (2000, 2003) for quartz and Li et al. (2014b) for K-feldspar. In the case of quartz, this was facilitated by a Freiberg Instruments Lexsyg Smart irradiation-stimulation-detection system (Richter et al., 2015). The quartz was stimulated at 445 ± 3 nm and 80 mW/cm^2 by blue laser diodes combined with 3 mm Schott GG420 and HC448/20 filters in front of each diode. Quartz was held at $\sim 125^\circ\text{C}$ (105°C substrate temperature) during optical stimulation to preclude charge retrapping within the 110°C TL trap (Murray and Wintle, 2000, 2003). IR stimulation, provided by IR laser diodes stimulating at 850 ± 3 nm filtered by 3 mm RG 715 and delivering $\sim 200 \text{ mW/cm}^2$ to the sample, was used to detect feldspar contamination (Hütt et al., 1988). The significance of such contamination was assessed using post-IR OSL ratios (Duller, 2003). Resulting photon emissions from quartz were divided from stimulating photons by 2.5 mm Hoya U-340 and 1 mm NG4 glass filters, and a Delta BP 365/50 interference filter, then detected by a Hamamatsu H7360-02 bi-alkaline cathode photomultiplier. The OSL signal was derived from the initial 0.1 s of stimulation, subtracting a background count based on the final 5 s of stimulation. Aliquot irradiation was conducted using a $^{90}\text{Sr}/^{90}\text{Y}$ β source delivering 0.11 Gy/s.

K-feldspars were analysed using a Risø TL-DA-15 irradiation-stimulation-detection system (Markey et al., 1997; Bøtter-Jensen et al., 1999). IR stimulation for K-feldspars was provided at 875 ± 80 nm (IR diodes, Telefunken TSHA 6203, $\sim 40 \text{ mW/cm}^2$). IR stimulation was performed at 50°C then 200°C in an attempt to minimise fading signals, with the pIRIR signal then measured at 250°C (pIRIR₂₅₀; Li et al., 2014b). K-feldspar emissions were filtered by 2 mm Schott BG-39 and 3 mm Schott BG-3 glass and detected by an EMI 9235QA photomultiplier fitted with a blue-green sensitive bi-alkaline photocathode. The pIRIR signal was determined from the initial 1.2 s of data, less a background count derived from the final 10 s of stimulation. Irradiation of K-feldspars was provided by a $^{90}\text{Sr}/^{90}\text{Y}$ β source conveying 0.07 Gy/s.

Sensitivity change was monitored using a test dose (5 Gy for quartz; 30 Gy for GL17171 quartz; 33 Gy for K-feldspar) and corrected by dividing the natural and regenerative-dose blue-OSL and pIRIR signals (L_x) by the test-dose signal response (T_x). Hot bleaches were applied after each SAR cycle, at 280°C for quartz (Murray and Wintle, 2003) and 320°C for K-feldspar (Li et al., 2014b).

Dose recovery tests help to assess whether a SAR protocol might accurately determine absorbed dose (Murray and Wintle, 2003). The dose recovery ratio (the quotient of an applied dose close in magnitude to the D_e value of a sample and recovered dose; Table 3) should be statistically concordant with unity. For the quartz fraction, dose recovery tests were performed for a range of preheats (180°C – 280°C for 10 s). The thermal treatment resulting in a dose recovery ratio consistent with unity was then selected for the D_e measurement. For the K-feldspar fraction, the efficacy of a 300°C preheat for 60 s (Li et al., 2014b) was assessed from the average of dose recovery ratios of three aliquots. The limited quantity of K-feldspar in GL17117 (B17-S1-OSL2) precluded a dose recovery test for this sample.

Anomalous fading tests on K-feldspar were conducted for two samples, one from the upper ice complex (GL17121), the other from the lower ice complex (GL17171) (Table 4). Fading measurements were adapted from the procedure outlined by Auclair et al. (2003) to align with the pIRIR measurement protocol in this study. To minimise the influence of initial sensitivity change upon fading calculations, each aliquot was subjected to the first SAR cycle of the K-feldspar measurement protocol. Aliquots were then bleached for 4 h in a Höhle SOL2 solar simulator to minimise any residual, optically sensitive signals. Each aliquot was then given a 474 Gy dose and preheated at 300°C for 60 s before storage. For GL17121, storage intervals were 38, 214, 544, and 1259 h; those for GL17171 differed slightly: 39, 350, 1105, and 1265 h. L_x/T_x values were obtained for three aliquots per storage interval and g-values were calculated using the R Luminescence package (Kreutzer et al., 2012).

D_e values were interpolated from regenerative dose response curves (DRCs) and fitted with a single saturating exponential, using Analyst (Duller, 2015). For samples GL17117 (B17-S1-OSL2) and GL17171 (B17-S1-OSL1), single exponential fits produced infinite estimates of D_e . In both instances, D_e values were based on exponential plus linear fits. Given the use of multigrain aliquots in this study, age estimates are based on measures of D_e centrality; weighted mean D_e values were calculated using the central age model (CAM; Galbraith et al., 1999) within the R Luminescence package (Kreutzer et al., 2012).

U, Th, and K concentrations and U disequilibrium ($^{228}\text{Ra}/^{238}\text{U}$) within the sediment were measured from subsamples using a laboratory-based Ortec GEM-S high-purity Ge coaxial detector spectrometer system, calibrated with certified reference materials supplied by CANMET (Table 2). Values of $^{228}\text{Ra}/^{238}\text{U}$ were, with the exception of GL17119 (B17-S2-OSL4) and GL17121 (B17-S2-OSL6), consistent with unity, suggesting negligible U disequilibrium. Using DRAC (Durcan et al., 2015), estimates of radionuclide concentration were converted into external, lithogenic D_r values (Adamiec and Aitken, 1998), accounting for D_r modulation forced by grain size (Mejdahl, 1979) and gravimetric moisture content (Zimmerman, 1971). Owing to the persistence of permafrost in the region, we assume gravimetric water content to be representative of the burial period. Nevertheless, the correction assumes liquid water instead of the in situ ice content, a distinction that is yet to be investigated in detail. Lithogenic radiation internal to K-feldspar grains was assumed to

Table 5. Radiocarbon ages of organic remains in ice wedges and host sediments as well as respective sample depths.^a

Sample ID	Depth (m below ground surface)	Lab ID	F ¹⁴ C	¹⁴ C age (¹⁴ C yr BP)	Calibrated age range (2σ) (cal yr BP)	Calibrated median age (cal yr BP)	Dated material	Host material	Reference ^b
Cover									
19.6/A/4/1.15	1.15	Poz-78149	n/r	295 ± 30	290–455	390	Twigs	S	1
Upper sand unit									
22.6/C/2/8.5	8.5	Poz-79756	n/r	12,660 ± 50	14,940–15,260	15,090	Twigs	S	1
B17-S2-Sed7	2.3	AWI-3025.1.1	0.0992 ± 0.0013	18,559 ± 106	22,280–22,850	22,470	In situ rootlets	S	6
B17-S2-Sed6	2.15	AWI-3024.1.1	0.0569 ± 0.0013	23,026 ± 185	27,040–27,720	27,330	In situ rootlets	S	6
20.6/A/1/460-472	4.6	Poz-77152	n/r	26,180 ± 220	30,050–30,920	30,470	Ground squirrel droppings, <i>Plantago</i> sp., <i>Artemisia</i> sp.	S	1
19.6/A/5/2.05	2.05	Poz-79751	n/r	33,400 ± 500	36,820–39,470	38,180	Twigs	S	1
19.6/A/5/2.05	2.05	Poz-79751	n/r	33,577 ± 472	37,040–39,560	38,390	Twigs	S	1
P-3-13	18.5	Poz-75782	n/r	36,300 ± 700	40,020–42,170	41,250	In situ rootlets	S	2
B17-S2-AMS4-1	11	AWI-1689.2.1	0.0084 ± 0.0002	38,348 ± 236	42,190–42,590	42,390	<i>Empetrum nigrum</i> leaf, twigs, Cyperaceae remains	S	3
B17-S2-AMS4-1	11	AWI-1689.1.1	<0.0094	>37,500	>42,100	n/a	<i>Empetrum nigrum</i> leaf, twigs, Cyperaceae remains	S	3
B17-S2-AMS4-2	11	AWI-1690.1.1	<0.0094	>37,500	>42,100	n/a	Cyperaceae stems and roots	S	3
Upper ice complex									
YuV-17/Bat 55	6.7	IGAN _{AMS} -6440	n/r	22,760 ± 60	26,990–27,270	27,160	Organic remains, n/i	IW	4
YuV-17/Bat 48	7.6	IGAN _{AMS} -6439	n/r	22,830 ± 60	27,080–27,300	27,200	Organic remains, n/i	IW	4
YuV-17/Bat 65	5.7	IGAN _{AMS} -6442	n/r	24,490 ± 70	28,590–28,970	28,750	Organic remains, n/i	IW	4
B17-IW5-02	20.3	AWI-1684.1.1	0.0453 ± 0.0030	24,858 ± 536	27,880–30,080	29,100	Organic remains, n/i	IW	3
YuV-17/Bat 34	10	IGAN _{AMS} -6436	n/r	26,540 ± 80	30,440–31,080	30,890	Organic remains, n/i	IW	4
YuV-17/Bat 61	6.1	IGAN _{AMS} -6471	n/r	27,437 ± 80	31,190–31,630	31,380	Organic remains, n/i	IW	4
YuV-17/Bat 37	9.7	IGAN _{AMS} -6437	n/r	28,620 ± 150	32,130–33,470	32,890	Organic remains, n/i	IW	4
YuV-17/Bat 42	8.8	IGAN _{AMS} -6438	n/r	29,910 ± 110	34,180–34,600	34,400	Organic remains, n/i	IW	4
18-B-VV/195	16.4	IGAN _{AMS} -6580	n/r	38,120 ± 250	42,100–42,510	42,310	Organic remains, n/i	IW	5
18-B-VV/30	12.55	IGAN _{AMS} -6575	n/r	41,970 ± 350	44,250–45,310	44,710	Organic remains, n/i	IW	5
18-B-VV/111	7.0	IGAN _{AMS} -6578	n/r	43,520 ± 320	45,190–46,640	45,830	Organic remains, n/i	IW	5
18-B-VV/1	17.0	IGAN _{AMS} -6573	n/r	45,235 ± 370	46,570–48,520	47,520	Organic remains, n/i	IW	5

18-B-VV/150	12.8	IGAN _{AMS} -6579	n/r	45,570 ± 630	46,300–49,440	47,850	Organic remains, n/i	IW	5
18-B-VV/15	14.8	IGAN _{AMS} -6574	n/r	46,785 ± 470	47,850–51,260	49,200	Organic remains, n/i	IW	5
B17-S2-AMS5	20.3	AWI-1691.2.1	0.0027 ± 0.0002	47,550 ± 677	48,190–54,580	50,250	Leaf fragment, roots	S	3
29.6/E/2/18.5	18.5	Poz-79755	n/r	49,000 ± 2000	48,210 - [54,980] ^f	51,920	<i>Papaver</i> sp.	S	1
B17-IW6-04	25.8	AWI-1686.1.1	<0.0094	>37,500	>42,100	n/a	Plant and insect remains, n/i	IW	3
B17-S2-AMS5	20.3	AWI-1691.1.1	<0.0094	>37,500	>42,100	n/a	Leaf fragment, roots	S	3
B17-S2-AMS6	25.8	AWI-1692.1.1	<0.0094	>37,500	>42,100	n/a	Cyperaceae remains, roots	S	3
2.6/C/6/12.5	12.5	Poz-79753	n/r	>48,000	>51,920	n/a	Twigs	S	1
18-B-VV/80	2.4	IGAN _{AMS} -6577	n/r	48940 ± 580 ^c	50,230 - [54,980] ^f	52,210	Organic remains, n/i	IW	5
22.6/C/9/14.5	14.5	Poz-79754	n/r	>51,000	n/a	n/a	Twigs	S	1
18-B-VV/215	27.4	IGAN _{AMS} -6581	n/r	>55,000 ^c	n/a	n/a	Organic remains, n/i	IW	5
Woody debris above lower sand									
21.6/B/3/2	18.5	Poz-66024	n/r	>49,000	>52,340	n/a	Charcoal	S	1
P-8-13	46-47	MAG-2047	n/r	49,320 ± 3150 ^d	46,410 - [54,980] ^f	51,310	Wood fragment	S	2
Lower ice complex									
B17-S1-AMS2	~49.5	AWI-1688.1.1	<0.0094	>37,500	>42,100	n/a	Twigs, Cyperaceae stems and roots	S	3
P1-11 top	90	MAG-2045	n/r	>43,360	>45,720	n/a	Shrub branch	S	2
P1-11 bottom	92	MAG-2046	n/r	>47,670	>47,670	50,320	Shrub branch	S	2
B17-S1-AMS2	~49.5	AWI-1688.2.1	<0.0013	>53,400	>53,400	n/a	Twigs, Cyperaceae stems and roots	S	3
B17-IW1-04	~50	AWI-1683.1.1	0.1400 ± 0.0062	15,790 ± 360 ^e	18,290–19,900	19,130	Hare dropping	IW	3

^aThe samples at the AWI MICADAS ¹⁴C dating facility were radiocarbon dated as gas targets (Lab ID ends with 1.1) or graphite targets (Lab ID ends with 2.1). The ages were calibrated using CALIB 8.2 (Stuiver and Reimer, 1993) and the IntCal20 calibration curves (Reimer et al., 2020). Calibrated age values are rounded to the nearest 10 yr. Calibrated finite radiocarbon ages are shown in Figure 8. n/r, not reported; n/a, not analysed; n/i, not identified; S, sediment; IW, ice wedge.

^bReferences: (1) Ashastina et al. (2017); (2) Murton et al. (2017b); (3) Opel et al. (2019); (4) Vasil'chuk and Vasil'chuk (2019); (5) Vasil'chuk et al. (2020); and (6) this study.

^cInterpreted as relocated material by Vasil'chuk et al. (2020).

^dInterpreted as nonfinite date by Murton et al. (2017b).

^eInterpreted as relocated material by Opel et al. (2019).

^fThe angular brackets [] indicate that the calibrated range impinges on end of calibration data set.

derive from a K content of 12.5% (Huntley and Baril, 1997). Cosmogenic D_r values were calculated on the basis of sample depth, geographic position, and matrix density (Prescott and Hutton, 1994). Luminescence ages are reported as thousands of years (ka) before the time of sampling. The difference between the year of sampling (e.g., 2017 in the present study) is considered negligible compared with the year AD 1950 datum for the Pleistocene ^{14}C ages reported here.

^{14}C dating

Organic remains from the samples of ice-wedge ice and the host sediment were picked for radiocarbon dating at the MICADAS ^{14}C dating facility of the Alfred Wegener Institute, Bremerhaven. Detailed descriptions of the laboratory procedures are given in Opel et al. (2019). In addition to the previously published radiocarbon ages in Ashastina et al. (2017), Murton et al. (2017b), Opel et al. (2019), Vasil'chuk and Vasil'chuk (2019), and Vasil'chuk et al. (2020), two more sediment samples from the upper sand unit were newly dated (Table 5). Results are given as $F^{14}\text{C}$ values (Reimer et al., 2004). Conventional radiocarbon ages are presented in years before present (yr BP). Ages within the calibration range were calibrated to years before present (cal yr BP), that is, before AD 1950, using Calib 8.20 (Stuiver and Reimer, 1993) based on the IntCal20 data set (Reimer et al., 2020). Calibrated age values are rounded to the nearest 10 yr.

$^{36}\text{Cl}/\text{Cl}$ dating

Background and age calculation

The $^{36}\text{Cl}/\text{Cl}$ dating method determines the difference in ages between distinctly different generations of ground ice within permafrost, based on measurements of $^{36}\text{Cl}/\text{Cl}$ ratios, that is, the radionuclide (^{36}Cl) relative to the two stable nuclides (^{35}Cl and ^{37}Cl). The $^{36}\text{Cl}/\text{Cl}$ method was first applied to permafrost samples from Cape Svyatoy Nos, northeastern Siberia (Gilichinsky et al., 2007). Dating of a more representative collection of ice samples from permafrost exposed along the coast of the Dmitry Laptev Strait (Blinov et al., 2009; Fig. 1a) showed the potential of the method and identified its limitations and uncertainties. As ^{10}Be was previously found unsuitable and again confirmed (Merchel et al., 2019) for dating ground ice with substantial sediment inclusions, $^{36}\text{Cl}/\text{Cl}$ dating is, therefore, the radionuclide dating method of choice, and its basis is briefly described here.

The long-lived radioactive isotope of chlorine ^{36}Cl (half-life $T_{1/2} = 301 \pm 2$ ka; Endt, 1990; Firestone, 1996) forms mainly in nuclear reactions of galactic and solar cosmic ray particles on atmospheric argon. ^{36}Cl atoms generated in the stratosphere enter the troposphere and, after mixing with the tropospheric fraction, are deposited on the Earth's surface by wet precipitation and by dry sedimentation. The mean global cosmogenic production rate of ^{36}Cl in the atmosphere is about 24 atoms/m²/s (Masarik and Beer, 2009), which supports local surface fluxes, depending on geographic location and climatic conditions.

The stable isotopes of chlorine (^{35}Cl and ^{37}Cl), according to the well-established global chlorine cycle (Graedel and Keene, 1996), enter the troposphere by sea spray and return to the Earth's surface with atmospheric water. The local deposition flux of Cl depends on the distance to oceans and on the dominant local wind directions. In regions with permafrost, winter precipitation enters ice wedges mainly in spring as snow meltwater

Table 6. Sample information and results from accelerator mass spectrometry for $^{36}\text{Cl}/\text{Cl}$ dating.^a

Sample	Depth (m below ground surface)	Stratigraphy	Chemistry	Sample mass (g)	$^{36}\text{Cl}/^{35}\text{Cl}$	Uncertainty $^{36}\text{Cl}/^{35}\text{Cl}$ (%)	Weighted mean $^{36}\text{Cl}/^{35}\text{Cl}$	Calculated age difference (ka)	Interpreted absolute age (ka)
B17-IW4	2	Upper sand	Direct precipitation	679.54	2.77×10^{-12}	6.2	$(2.79 \pm 0.12) \times 10^{-12}$	—	—
			Pre-enrichment	988.85	2.80×10^{-12}	6.3			
B17-IW5	20.3	Upper ice complex	Direct precipitation	994.60	2.79×10^{-12}	6.2	$(2.73 \pm 0.12) \times 10^{-12}$	10 ± 19^b	40 ± 10 (base age from ^{14}C)
			Pre-enrichment	972.76	2.66×10^{-12}	6.3			
B17-IW6	25.8	Upper ice complex	Direct precipitation	864.47	2.64×10^{-12}	6.2	$(2.66 \pm 0.12) \times 10^{-12}$	11 ± 20^b	51 ± 30
			Pre-enrichment	913.36	2.68×10^{-12}	6.4			
B17-IW1	~50	Lower sand	Direct precipitation	891.56	6.13×10^{-13}	6.4	$(7.11 \pm 0.34) \times 10^{-13}$	573 ± 42^b	624 ± 51
			Pre-enrichment	968.02	8.16×10^{-13}	7.0			

^aThe data are traceable to primary-type standard material SM-C1-11 (Merchel et al., 2011). The given uncertainties include statistical measurement uncertainties, the given uncertainty of the standard used, and the uncertainty of the mean of the standard measurement.

^bAge difference between this sample and the one above.

percolates and refreezes in thermal contraction cracks (Opel et al., 2018). Then, after an ice wedge ceases growing and becomes isolated from new atmospheric inputs of ^{36}Cl , the $^{36}\text{Cl}/\text{Cl}$ ratio decreases with time, following the law of radioactive decay. The time interval between the ages of two ice-wedge samples is determined by the difference in their residual $^{36}\text{Cl}/\text{Cl}$ ratio. Obviously, the validity of the dating rests on the assumption that the $^{36}\text{Cl}/\text{Cl}$ input into the atmospheric water cycle is constant and that the ice wedge is a closed system.

The directions of moisture fluxes, from west to east in northern Europe and Asia, indicate that most moisture presently reaching Siberian regions with longitudes $<140^\circ\text{E}$ originates from the relatively warm northern Atlantic Ocean (Kuznetsova, 1998). Moisture transport from the cold Arctic Ocean to Siberia can be considered negligible, particularly during winter, when the Arctic Ocean is covered by sea ice. Therefore, the change in distance of north Siberian regions to the Arctic Ocean is not expected to influence the deposition flux of stable chlorine.

Temporal and spatial variations in ^{36}Cl atmospheric flux reflect a combination of variations in production and transport. The production rate of ^{36}Cl has a strong latitudinal dependence caused by the shielding effect of the Earth's magnetic field. However, strong mixing of the stratospheric air masses (Heikkilä et al., 2008) eliminates most of this effect. The production rate is also affected by temporal changes of solar activity and of the geomagnetic field intensity, which both modulate the cosmic ray flux in time. The corresponding decadal- to centennial-scale variations of ^{36}Cl concentration are well preserved in polar ice cores (Muscheler et al., 2007), but their resulting effect should cancel out when averaged on the geologic timescale.

The upper limit of age determination of wedge ice is defined by ^{36}Cl in situ production. Such production may occur at the place of fixation by thermal-neutron capture of stable ^{35}Cl contained in ice. These low-energy neutrons originate from cascades of cosmic ray interactions above and below the ground level, and from the decay of natural uranium and thorium. The dating limit is reached when the atmospheric concentrations in ice decay to the level of the in situ production and corresponds to an age limit of 3 Ma (Tikhomirov and Blinov, 2009). This limit likely exceeds the age of most terrestrial permafrost samples.

The $^{36}\text{Cl}/\text{Cl}$ method proposes that the time interval Δt between the formation of two ice-wedge horizons (1 and 2) is calculated from the corresponding $^{36}\text{Cl}/\text{Cl}$ ratios according to the formula:

$$\Delta t = t_2 - t_1 = \tau_{36} \ln \left[\frac{(^{36}\text{Cl}/\text{Cl})_{t_1}}{(^{36}\text{Cl}/\text{Cl})_{t_2}} \right] \quad (\text{Eq. 2})$$

The mean lifetime of ^{36}Cl is $\tau_{36} = T_{1/2}/\ln 2 = (434 \pm 3)$ ka. For the model base sample of known age, the equation gives the absolute age of the deeper sample. Thus, $^{36}\text{Cl}/\text{Cl}$ age estimates are reported as the age difference, in thousands of years (ka), between the younger and older ice wedges.

Sample processing and AMS measurements

Water melted from ice wedges was chemically treated in a dedicated ^{36}Cl (i.e., Cl- and S-free) chemistry laboratory at the Helmholtz-Zentrum Dresden-Rossendorf. The only suitable chemical form for ^{36}Cl AMS measurements is AgCl; hence, radiochemical separation needs to produce AgCl, preferably with high chemical yield and low isobar (^{36}S) abundance. Having

experienced low chemical yield (20%–35%) for AgCl from large groundwater and ice samples during routine sample treatment, we split the four ice-wedge samples (Table 6) of this study into two halves and applied our routine method, as well as an alternative one with a preconcentration step using anion exchange. Details have been presented earlier (Merchel et al., 2019). Further sample processing followed routine protocols for calcite samples but without the use of isotopically enriched ^{35}Cl carrier (Merchel et al., 2013). Individual results of $^{36}\text{Cl}/^{35}\text{Cl}$ presented in Table 6 for the two aliquots of each sample can be interpreted as replicate measurements. Resulting AgCl was pressed into dedicated Cu sample holders (Pavetich et al., 2014) without taking any further precautions like AgBr backing for additional isobar suppression. A specialised ion source with lowest cross-contamination and long-term memory (Pavetich et al., 2014) attached to the 6 MV tandem accelerator (Rugel et al., 2016) was used for AMS measurements at the DREAMS (DREsden AMS) facility. All $^{36}\text{Cl}/\text{Cl}$ data are traceable to the primary-type standard material SM-Cl-11 with a nominal ratio of $(1.079 \pm 0.010) \times 10^{-11}$ (Merchel et al., 2011). The sequential age difference of the measured samples, calculated with Eq. 2, is presented in Table 6 (“Calculated Age Difference”). The given uncertainties are calculated formally from experimental results and do not include nonstatistical uncertainty of their interpretation.

RESULTS

Luminescence dating

D_e , D_r , and luminescence age data are presented in Tables 2 and 3; Figure 5 illustrates representative signal decays and DRCs, as well as inter-aliquot age distributions. The strong IRSL response (Fig. 5a and b) and post-IR OSL ratios (Table 3) for quartz suggest the presence of significant feldspar contamination. A 2-week, 35% H_2SiF_6 digestion was subsequently applied to one sample (GL17172) in an attempt to remove the contaminant (Jackson et al., 1976; Berger et al., 1980) without significantly altering quartz grain size. The SAR analysis was then repeated, producing a negligible IRSL signal, a post-IR OSL ratio consistent with unity (Table 3), and an OSL fast component more consistent with that of quartz (ca. 94% of the signal at $t = 0$), all suggesting removal of the contaminant.

Dose recovery ratios are, except for GL17119 (B17-S2-OSL4), consistent with unity for the majority of quartz samples, indicating accurate retrieval of applied laboratory doses (Table 3). For K-feldspar extracts, dose recovery ratios from pIRIR₂₅₀ generally produced overestimates of the applied dose by 10%–30% (Table 3). Figure 6 highlights that dose recovery ratios for IR₅₀ and pIRIR₂₀₀ demonstrate greater consistency with unity. Low and high dose repeat ratios (Table 3) for both quartz and K-feldspar are generally consistent with unity, which suggests adequate correction of any sensitivity change that progressed with laboratory measurement. In general, the variation in D_e beyond counting statistics (% overdispersion) increases with depth, most likely as a function of the proximity of absorbed dose to saturation. Overdispersion is generally higher for quartz than K-feldspar, which on a multigrain aliquot likely reflects a greater proportion of K-feldspar grains contributing to the luminescence signal relative to quartz.

K-feldspar fading tests on GL17121 and GL17171 reveal a pattern consistent with previous studies of pIRIR signals (e.g., Thomsen et al., 2008), whereby the g-value depends on IRSL

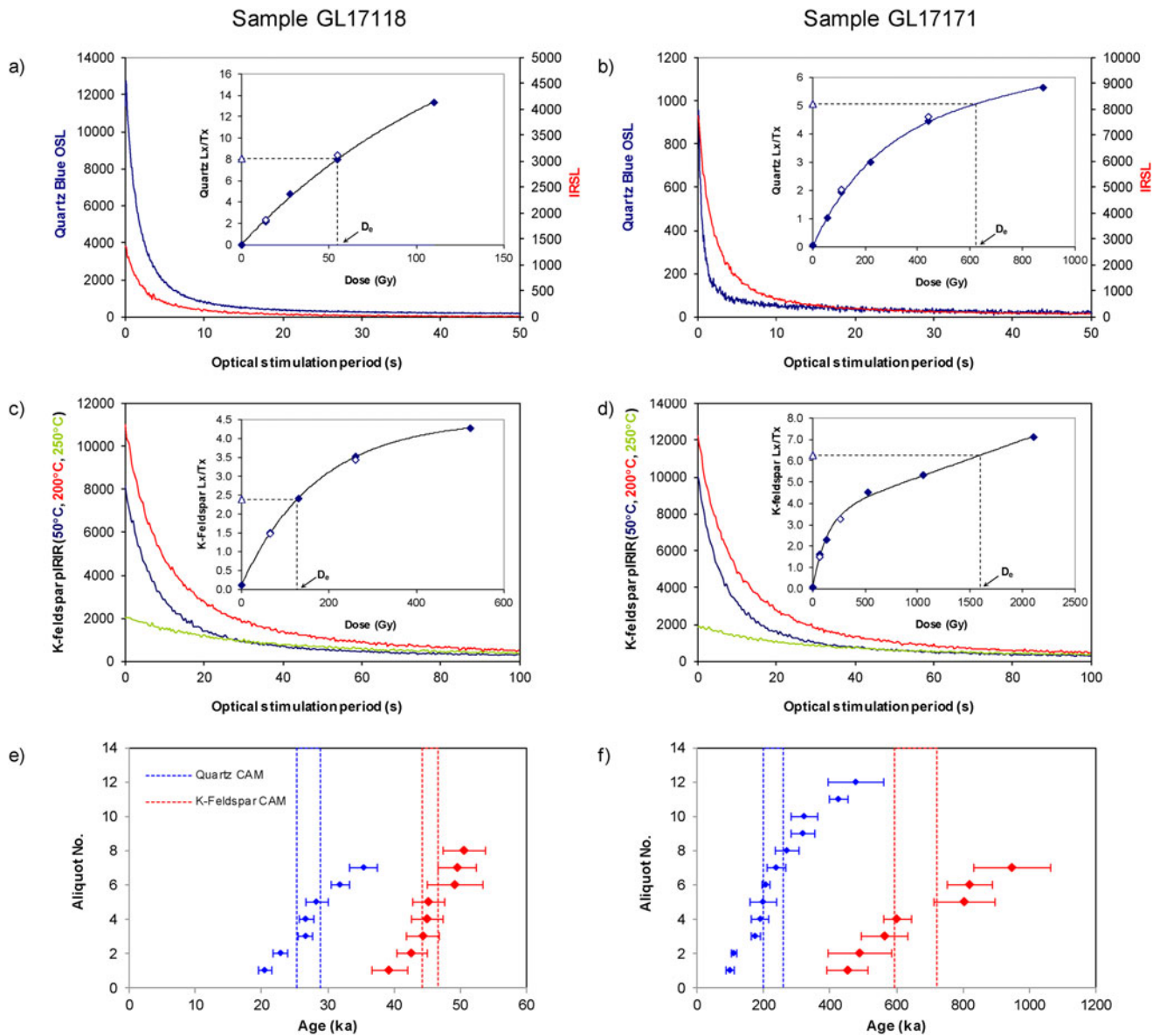


Figure 5. Dose–response curves (DRCs) and inter-aliquot age distributions for samples GL17118 (B17-S2-OSL3, left column) and GL17171 (B17-S1-OSL1, right column), representative of the sample suite; the top and bottom optically stimulated luminescence (OSL) samples from the Batagay megaslump sequence. (a and b) blue OSL and infrared-stimulated luminescence (IRSL) signal decays from quartz; (c and d) IR₅₀, pIRIR₂₀₀, and pIRIR₂₅₀ signal decays from K-feldspar; insets are the associated Lx/Tx DRCs (open triangle, natural signal; closed diamonds, regenerative-dose signals; open diamonds, repeat regenerative doses). (e and f) inter-aliquot age distributions and central age models (CAM) derived from quartz blue OSL and K-feldspar pIRIR₂₅₀.

stimulation temperature (Fig. 7; Table 4). For both samples, the IR₅₀ signal displayed the greatest IRSL decay during storage. However, the *g*-value for GL17171 ($8.30 \pm 0.98\%$ /decade) was much higher than that calculated for GL17121 ($2.96 \pm 0.98\%$ /decade). GL17121 displayed negligible fading at elevated stimulation temperatures, with the pIRIR₂₀₀ and pIRIR₂₅₀ signals producing *g*-values statistically consistent with zero. For GL17171 the pIRIR₂₀₀ signal still observed significant decay ($g = 3.44 \pm 1.02\%$ /decade), whereas the pIRIR₂₅₀ signal produced a *g*-value indistinguishable from zero.

Six age estimates were produced from each of the quartz and K-feldspar fractions (Table 3). Samples from the same mineral produce ages that are in stratigraphic order. However, except for GL17120 (B17-S2-OSL5), all quartz ages are significantly younger than those from K-feldspar by 20%–65%. The lower ice complex, sampled at depths of ~50 and 49.5 m below the ground surface,

yielded quartz OSL ages of 228 ± 32 ka and 244 ± 16 ka, and K-feldspar pIRIR ages of 658 ± 74 ka and 693 ± 97 ka (GL17171 and GL17117, B17-S1-OSL1 and B17-S1-OSL2, respectively). The upper ice complex, sampled ~5 m above its base (GL17172), yielded a quartz OSL age of 57.5 ± 5.8 ka and a K-feldspar pIRIR age of 90.5 ± 6.2 ka. The upper sand unit, sampled at depths of 11, 2.3, and 2.1 m below the ground surface, provided quartz OSL ages of 40.0 ± 3.9 ka, 41.0 ± 3.9 ka, and 27.1 ± 2.1 ka, and K-feldspar pIRIR ages of 61.0 ± 3.7 ka, 50.9 ± 3.5 ka, and 45.5 ± 2.9 ka (GL17120, GL17119, and GL17118 corresponding to B17-S2-OSL5, B17-S2-OSL4, and B17-S2-OSL3, respectively).

¹⁴C dating

Several radiocarbon ages yielded lower ¹⁴C intensities than the blanks included in the respective sequence. For these cases, data

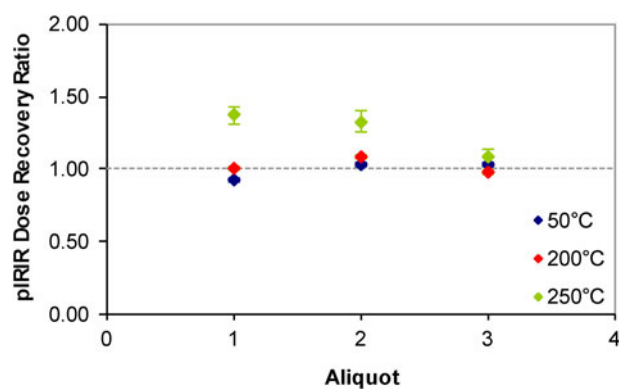


Figure 6. Dose recovery ratios for IR_{50} , $pIRIR_{200}$, and $pIRIR_{250}$ of three aliquots from sample GL17171 (B17-S1-OSL1).

are given as $F^{14}C_{\text{sample}} < F^{14}C_{\text{blank}}$, resulting in minimum ages (Table 5). Based on all available radiocarbon ages from the Batagay megaslump, but excluding those considered as redeposited by the original authors (Ashastina et al., 2017; Murton et al., 2017b; Opel et al., 2019; Vasil'chuk and Vasil'chuk, 2019; Vasil'chuk et al., 2020), it is obvious that radiocarbon dating covers only the uppermost units of the stratigraphy, that is, the Holocene cover and the upper parts of the upper sand and the upper ice complex, whereas the respective lower parts of these units yield nonfinite radiocarbon ages. The Holocene cover deposits exhibit only one age of 0.39 cal ka BP. The upper sand unit has finite ages that range from 15.09 to 42.39 cal ka BP. The finite age range of the upper ice complex spans from 27.16 to 52.21 cal ka BP (Table 5). Nonfinite ages from both sediment and wedge ice of the upper ice complex are common and might suggest formation of this unit started well before 50 cal ka BP. The lowermost three units—the woody debris layer, the lower sand, and the lower ice complex—show nonfinite radiocarbon ages, with one exception from the woody debris layer ($49,320 \pm 3,150$ yr BP interpreted as a nonfinite age by Murton et al., 2017b). It is notable that previous sampling in the megaslump at different accessible locations and uncertainties about exact sampling depth complicate the understanding of age–depth relations.

$^{36}Cl/^{37}Cl$ dating

AMS results for $^{36}Cl/^{35}Cl$ measurements are presented as individual results for the two aliquots of each sample. Assuming natural $^{35}Cl/^{37}Cl$, they can be transformed into $^{36}Cl/^{35+37}Cl$ ratios if needed. $^{36}Cl/^{35}Cl$ sample values are two to three orders of magnitude above typical machine blank values, hence, no blank correction has been applied. Total uncertainties in the dating include those associated with the statistical measurement of the samples, the standard SM-CI-11 used (Merchel et al., 2011), the mean of the standard measurement, and an additional 6% systematic uncertainty to account for unstable measurement conditions (Table 6).

Weighted mean $^{36}Cl/^{35}Cl$ ratios of the four studied ice wedges range from $(2.79 \pm 0.12) \times 10^{-12}$ for the stratigraphically youngest ice wedge B17-IW4 to $(7.11 \pm 0.34) \times 10^{-13}$ for the stratigraphically oldest ice wedge B17-IW1 and decrease with depth (Table 6). The corresponding calculated ages are in correct stratigraphic order, that is, without age reversals. They show that the ice wedge B17-IW5 from the upper ice complex is 10 ± 19 ka

older than ice wedge B17-IW4 from the upper sand. Ice wedge B17-IW6, also from the upper ice complex, is 11 ± 20 ka older than ice wedge B17-IW5. Ice wedge B17-IW1, from the lower ice complex, is 573 ± 42 ka older than ice wedge B17-IW6 (Table 6).

DISCUSSION

Methods of permafrost age determination

A major problem in determining the age of permafrost is that dating methods are generally not well established on frozen material and must be applied to differing constituents (i.e., organic remains, quartz, feldspar, ice) that may have different formation processes and ages. For example, ice wedges are—due to their downward-directed formation—younger (by up to many thousands of years or more) than their host sediments at the same altitude and may penetrate multiple layers of sediment, each of differing age. Some of these uncertainties relate to unknown influences of [1] freezing and thawing or warming and cooling and [2] temperature-gradient-induced migration of unfrozen water through porous media on chemical and physical parameters important to the four age-determination techniques applied at Batagay.

Luminescence dating

Based on the diagnostics deployed, issues of luminescence age reliability are fivefold. First, the mass of quartz and K-feldspar within the modal grain fraction is relatively small, which meant that after preliminary measurements as few as seven multigrain aliquots were available to produce a luminescence age. Future sampling should aim to retrieve twice the bulk mass from the site (~1 kg). Nonetheless, the luminescence ages are in stratigraphic order and distinct between units. Second, a nonstandard post-HF (H_2SiF_6) step is required to remove feldspar contamination from quartz sand samples in the Batagay sequence. For the single sample where this acid treatment was used (GL17172, B17-S2-OSL7), there was a modest though statistically insignificant increase in D_e relative to its untreated counterpart (Table 3). At this point, we consider the age estimates from quartz untreated with H_2SiF_6 as minima owing to the dominance and probable anomalous fading of the contaminating feldspar IRSL signal.

Third, for the K-feldspar samples, the mean dose recovery ratio for most samples indicates that the measured dose overestimates the applied laboratory dose by 10%–30% (Table 3). Of the five samples for which a dose recovery test was undertaken, only sample GL17172 (B17-S2-OSL7) returned a mean $pIRIR_{250}$ -based dose recovery ratio consistent with unity. In contrast, the mean dose recovery ratios for IR_{50} and $pIRIR_{200}$ approximate unity for each sample. The success of SAR dose recovery tests in previous studies using high-temperature K-feldspar $pIRIR$ signals has varied, with measured doses overestimating (e.g., Thiel et al., 2011), underestimating (e.g., Li and Li, 2011), and consistent with (e.g., Li et al., 2014b) the applied dose. The proposed origins of this inconsistent performance can be summarised as an effect of residual signals, present before the initial laboratory dose is applied (e.g., Stevens et al., 2011) and/or remaining after each regenerative dose (e.g., Colarossi et al., 2018), and an effect of sensitivity changes within the first measurement cycle (e.g., Qin et al., 2018) and/or between the first and second cycles (Roberts, 2012). A poor high-temperature $pIRIR$ dose recovery outcome does not necessarily translate directly to an inaccurate

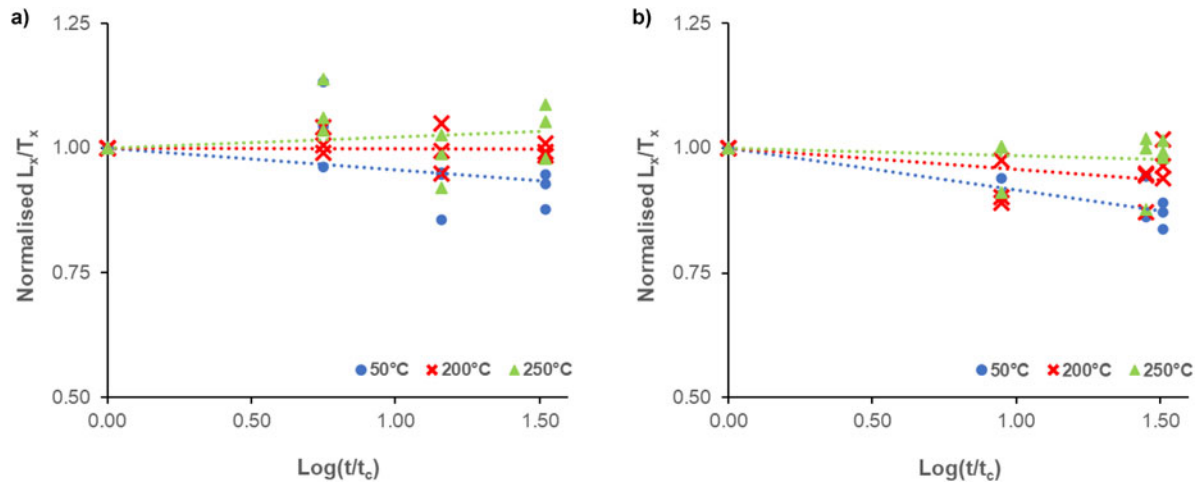


Figure 7. Signal depletion as a function of storage time for the IR₅₀ (blue circles), pIRIR₂₀₀ (red crosses), and pIRIR₂₅₀ (green triangles) signals for samples GL17121 (a) and GL17171 (b). Storage times (t) and L_x/T_x ratios were normalised to the first/prompt measurements (t_c) at 38 and 39 h for panels a and b, respectively.

estimate of burial age (e.g., Thiel *et al.*, 2011), but it is clear that the effects of residual signals and response to measurement conditions can vary between samples. It is therefore essential to compare high-temperature K-feldspar pIRIR SAR age estimates with independent chronological controls.

Fourth, despite varying degrees of IRSL decay for the lower stimulation temperatures, for both GL17121 and GL17171 the pIRIR₂₅₀ signal does not appear to significantly fade at room storage temperatures. It is acknowledged that the evaluation of fading is limited by laboratory time scales and precision. However, it is also noted that lower levels of anomalous fading in K-feldspar have previously been observed under frozen conditions (e.g., Krause *et al.*, 1997; Preusser *et al.*, 2001, 2003; Preusser and Schlüchter, 2004; Huntley and Lian, 2006; Thomsen *et al.*, 2008; Fuchs *et al.*, 2013).

Finally, the characteristic saturation point (D_0) for K-feldspar in these samples, derived from fitting a single exponential to DRCs, is broadly comparable to the “ D_1 ” value (D_0 value for first of a double exponential fit; 142 ± 35 Gy) presented by Li *et al.* (2015) for pIRIR₂₅₀ L_x/T_x-based DRCs in their evaluation of standardised DRCs for K-feldspar. All but the two deepest samples, GL17117 and GL17171, produce D_e values that are lower than $2D_0$ (86% saturation of a single exponential DRC), proposed by Wintle and Murray (2006) as the upper limit for quartz OSL age estimation. The D_e values for GL17117 (B17-S1-OSL2) and GL17171 (B17-S1-OSL1) also exceed $3D_0$ (95% saturation of a single exponential DRC). Given this observation and that D_e values were derived from non-standard, exponential plus linear fits, the pIRIR₂₅₀ ages associated with GL17117 (B17-S1-OSL2) and GL17171 (B17-S1-OSL1) should be treated with caution if considered in isolation.

Given the range of uncertainties discussed, it is essential that the reliability of luminescence age estimates be considered through a comparison of quartz OSL, K-feldspar pIRIR₂₅₀, and independent age controls. The relative difference in ages between quartz OSL and K-feldspar pIRIR₂₅₀ increases with depth. Quartz ages are 20%–40% younger than those for K-feldspar through the upper sand and upper ice complex, whereas those for quartz within the lower ice complex are ~65% younger than those for K-feldspar. The removal of feldspar contamination in sample GL17172 (B17-S2-OSL7) reduces the discrepancy between quartz and

K-feldspar ages from 36% to 25%, though this shift is not statistically significant. Given the relatively high preheat and cutheat temperatures (>200°C, substrate >160°C) used for quartz measurements in this study, any thermally unstable, ultrafast OSL component is unlikely to explain the age gap between quartz treated with H₂SiF₆ and K-feldspar (Jain *et al.*, 2008). Further, it is the quartz age that remains consistent with the ³⁶Cl/Cl ages in the upper ice complex, with the K-feldspar age being significantly higher despite the relatively large uncertainties in the ³⁶Cl/Cl estimates (Fig. 8). For GL17172 at least, this might suggest that it is the K-feldspar that is overestimating age. Residual doses have frequently been observed in pIRIR studies. These are typically less than ~35 Gy but can range from ~17 to 145 Gy (Lowick *et al.*, 2012; Li *et al.*, 2014a). They appear sample dependent rather than driven by bleaching conditions (Li *et al.*, 2014a), but when combined with the burial dose can produce age overestimates. In the case of GL17172, the K-feldspar age exceeds that of quartz by virtue of an additional 63 Gy (accounting for differences in D_r between quartz and K-feldspar). Although the aeolian nature of the sedimentary deposits from which the luminescence samples were extracted would have promoted bleaching, there was insufficient sample to estimate sample-specific residual dose through laboratory bleaching experiments. At this point, we assume 63 Gy to be the upper limit of residual dose. The lower sand was previously dated by Ashastina *et al.* (2017) using quartz OSL and K-feldspar IR₅₀ (Fig. 8) and ascribed to MIS 6. Though the age estimates are stratigraphically consistent, there is no independent chronological control in this unit, and there is again divergence between the quartz and K-feldspar age estimates, with the former 32% younger than the latter. The IR₅₀ signal is not corrected for anomalous fading and is considered here to be a minimum age estimate.

Within the lower ice complex, it is the K-feldspar pIRIR₂₅₀ age that is coeval with that from ³⁶Cl/Cl, with the quartz OSL age estimate significantly younger. It is unlikely that the difference here between quartz and K-feldspar ages relates to residual doses in the latter; it would require a residual of ~1100 Gy to explain the divergence, which is an order of magnitude higher than any previously reported residual dose. Although the L_x/T_x DRCs for the quartz OSL and K-feldspar pIRIR₂₅₀ signals in this unit have similar D_0 values (Table 3), it appears that quartz has crossed a threshold

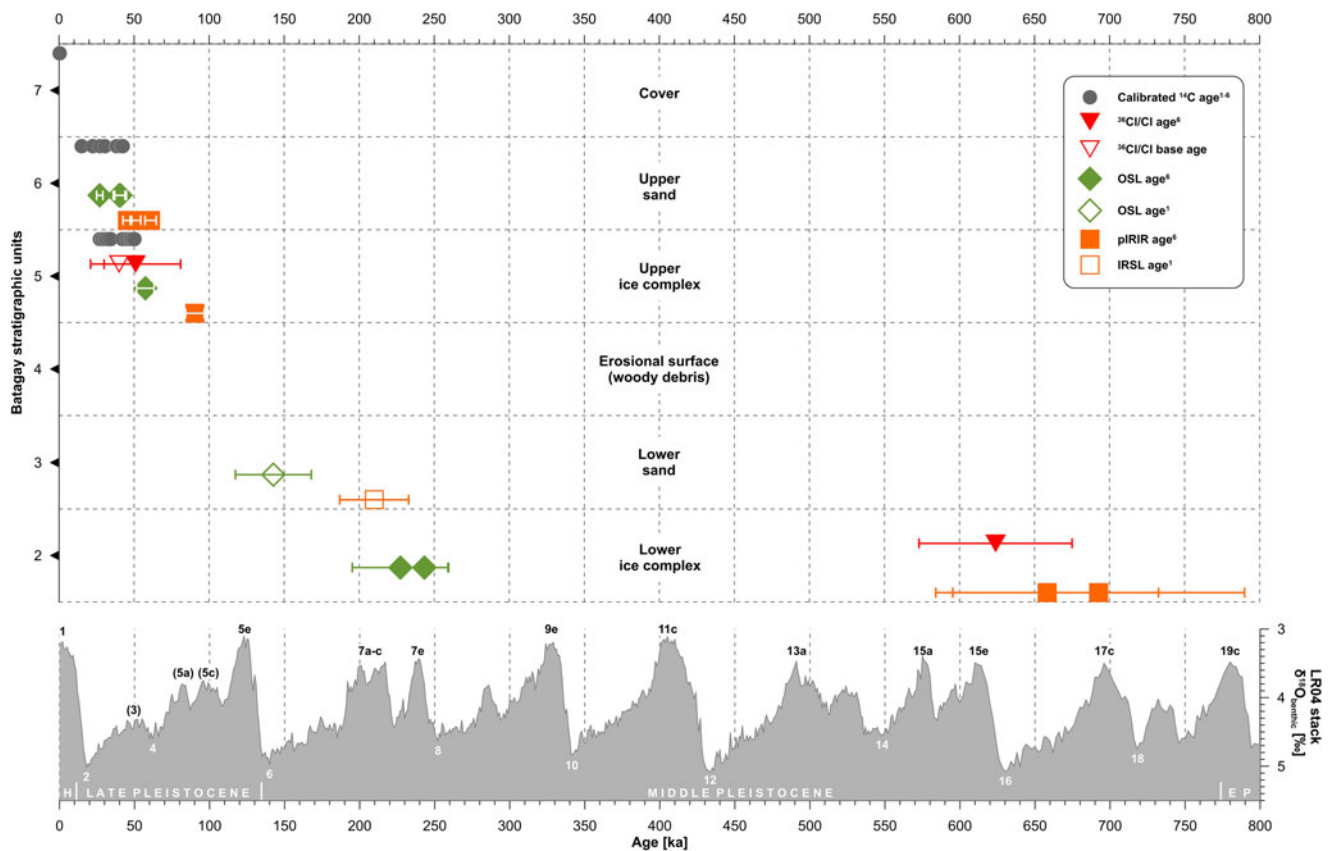


Figure 8. Schematic overview of all available chronostratigraphic data of the Batagay megaslump summarised from (1) Ashastina et al. (2017); (2) Murton et al. (2017b); (3) Opel et al. (2019); (4) Vasil’chuk and Vasil’chuk (2019); (5) Vasil’chuk et al. (2020); and (6) this study. Stratigraphy not to scale (see Table 1). Radiocarbon ages are shown as calibrated ages in ka BP. Note that this compilation is based on several sampling campaigns by different researchers working at different sections, which precludes placing the data in true vertical order. The positions of $^{36}\text{Cl}/\text{Cl}$ and ^{14}C ages above luminescence age do not have depth significance and are solely to show the single data points clearly. Glacial–interglacial cycles shown in the lower graph derive from the marine isotope stages of the LR04 stack of benthic $\delta^{18}\text{O}$ (Lisiecki and Raymo, 2005) and a current review of past interglaciations (Past Interglacials Working Group of PAGES, 2016), which are given here for chronological orientation. MIS numbers above the curve indicate interglacial maxima (interstades of the Late Pleistocene are given in brackets). MIS numbers below the curve indicate glacial maxima. At the bottom of the plot, “H” stands for Holocene and “E P” for Early Pleistocene.

where it underestimates age. This may in part relate to anomalous fading driven by feldspar IRSL contamination of the quartz OSL signal. This underestimation also likely afflicts the quartz age from the lower sand unit (Ashastina et al. 2017), which is less than the IR₅₀ K-feldspar age estimate that in itself is probably an underestimate due to anomalous fading. The agreement in age between K-feldspar pIRIR₂₅₀ and $^{36}\text{Cl}/\text{Cl}$ is encouraging, but it is acknowledged that D_e values associated with the former exceed $3D_0$ (95% saturation), and until further work is conducted pIRIR₂₅₀ indicates that the lower ice complex dates to *at least* 650 ka.

^{14}C dating

The ^{14}C dating of different organic materials has proven useful to varying degrees for determining the age of the upper part of the permafrost sequence at Batagay. Organic samples dated ($n = 40$) from the upper ice complex, the upper sand unit, and the cover layer comprise plant macrofossil remains (wood fragments, twigs, leaves, stems, in situ rootlets, charcoal), ground-squirrel droppings, insect remains, and unidentified microinclusions within ice wedges (Table 5). The calibrated ages range from 0.39 cal ka BP in the cover layer to 51.92 cal ka BP, and numerous ages are nonfinite (Table 5). Interpretation of the finite ^{14}C ages, however, highlights a number of problems. First, some material, particularly wood fragments, is likely reworked—for example by thermal erosion from

permafrost—and simply provides maximum ages of sediment deposition. Therefore, we compare ^{14}C ages obtained only from in situ material with ages from other methods. Second, unidentified organic material in microinclusions in wedge ice (Vasil’chuk and Vasil’chuk, 2019; Vasil’chuk et al., 2020) makes interpretation of ages obtained by these authors difficult without knowing exactly how the material relates to the age of the host ice. Finally, depth measurements obtained from different parts of the large and topographically variable floor and headwall of the megaslump had to be integrated, and this introduced considerable error in determining the samples’ precise stratigraphic positions. This error is compounded by the downslope inclination of the stratigraphy and the variable thickness and geometry of the stratigraphic units (Fig. 2) and by local irregularities in the distribution of ice and mineral soil. Nonetheless, the age estimates suggest in broad terms that the cover layer is of Holocene age, the upper sand unit began forming sometime within MIS 3 (58–28 ka) and formation continued into MIS 2 (28–11.7 ka), and the upper ice complex developed during MIS 3, but the starting time of formation is not known, because the oldest ages are beyond the effective limit of ^{14}C dating (~40–50 ka).

We recommend that the best material for ^{14}C dating of syngenetic permafrost at Batagay is plant material that can be identified taxonomically and is in growth position within the stratigraphic

sequence. Such material includes in situ roots and tree stumps. Where in situ material is not available, we recommend dating of fragile macrofossils—which are unlikely to have survived significant reworking and are likely representative of the palaeoecological conditions and therefore local environment—a strategy adopted in stringent ^{14}C dating studies from other permafrost regions (e.g., Mann *et al.*, 2010; Kennedy *et al.*, 2010; Murton *et al.*, 2015, 2017a).

$^{36}\text{Cl}/\text{Cl}$ dating

As the $^{36}\text{Cl}/\text{Cl}$ method provides relative ages with respect to a starting point of known age, we need to use other available age information to constrain the age of the reference ice wedge. We decided not to select the youngest and uppermost ice wedge B17-IW4 from the upper sand as the reference ice wedge, because (1) it is located only about 2 m below the modern surface (Fig. 4) and (2) its stable-isotope composition is quite close to that of a Holocene ice wedge nearby (Opel *et al.*, 2019). Hence, we cannot exclude that this ice wedge is an epigenetic Holocene ice wedge, that is, it developed substantially later than the time of deposition of its host sediments of MIS 3 to MIS 2 age (Fig. 4), as discussed in detail by Opel *et al.* (2019). Instead, we selected ice wedge B17-IW5 from the upper ice complex as the reference for the $^{36}\text{Cl}/\text{Cl}$ dating results. Based on the available ^{14}C ages for this ice wedge (calibrated median age 29 cal ka BP) and its host sediments (> 50 cal ka BP), we estimate about 40 ± 10 cal ka BP as starting point (base age) for the $^{36}\text{Cl}/\text{Cl}$ ice-wedge age calculations.

The deduced ages for the ice wedges from older strata are 51 ± 30 ka for ice wedge B17-IW6 from the upper ice complex and 624 ± 51 ka for ice wedge B17-IW1 from the lower ice complex (Table 6, “Interpreted Absolute Age”). It is notable that under the present assumptions, the large uncertainty range of the $^{36}\text{Cl}/\text{Cl}$ age of B17-IW6 covers the OSL age estimate from the upper ice complex but is somewhat younger than the pIRIR age. The $^{36}\text{Cl}/\text{Cl}$ age of B17-IW1 from the lower ice complex is distinctly older than the OSL ages from the lower ice complex but falls well into the uncertainty range of both pIRIR ages (Fig. 7). These results support the earlier finding of Blinov *et al.* (2009) that the strength of the $^{36}\text{Cl}/\text{Cl}$ method is to get age estimates for ice on long (i.e., glacial–interglacial) time scales, whereas it is not able to sufficiently resolve shorter (i.e., multimillennial) age differences between ice wedges. Due to the long lifetime of ^{36}Cl (434 ka), the method is more applicable to old (Middle Pleistocene) ice wedges than to younger (Late Pleistocene) ones.

However, the method’s critical assumption is that the ratio of concentrations of cosmogenic ^{36}Cl to stable chlorine at a given time corresponds to the mean atmospheric value, which remains constant during the period of stable climatic conditions. As the potential influence of climatic changes cannot be excluded or quantitatively estimated so far, the results of the $^{36}\text{Cl}/\text{Cl}$ method should not be used as the only source of information but as supplementary evidence in combination with other dating results.

Dating synthesis

The new age estimates obtained from the four dating methods can be compared with the full data set of ages (Tables 3, 5, and 6) to evaluate the likely age of the lower ice complex, the upper ice complex, and the upper sand (Fig. 8). The lower ice complex provides two pIRIR ages of 658 ± 74 ka and 693 ± 97 ka from sand

that, within uncertainties, are indistinguishable not only from each other but also from a single deduced $^{36}\text{Cl}/\text{Cl}$ age of 624 ± 51 ka from ice wedge B17-IW1. Accepting the caveats of pIRIR₂₅₀ Lx/Tx saturation, this consistency provides reasonable confidence that the lower ice complex developed during the early Middle Pleistocene or earlier, and we provisionally suggest an age of about 650 ka (MIS 16) or earlier.

The upper ice complex shows reasonable agreement between ages from three of the four dating methods. Sixteen finite ^{14}C ages of ~ 50 to 27 cal ka BP and seven nonfinite ^{14}C ages from different sections within the slump, one deduced $^{36}\text{Cl}/\text{Cl}$ age of 51 ± 30 ka, and one OSL age of 67.6 ± 9.9 ka point to the development of the upper ice complex during MIS 3, possibly ceasing during the early part of MIS 2. Nonetheless, we suspect that some of the ^{14}C ages near the effective limit of ^{14}C dating (~ 40 – 50 ka) underestimate the true age of ice-complex development, which could have started earlier during MIS 4.

The upper sand unit also shows reasonable agreement between ages from two of the dating methods. Eight finite ^{14}C ages of ~ 42 to 15 cal ka BP and two nonfinite ^{14}C ages are fairly similar to the three quartz OSL ages of 40.0 ± 3.9 ka, 41.0 ± 3.9 ka, and 27.1 ± 2.1 ka. These OSL ages are affected by feldspar contamination, but removal of this contaminant from GL17172 suggests any shift in age would be statistically insignificant at these depths. The agreement is strengthened if we select only those organic samples that were demonstrably in situ (i.e., rootlets) or that included delicate organic material (e.g., *Empetrum nigrum* leaves) that is unlikely to have survived much reworking. This selection provides three finite ^{14}C ages from in situ rootlets of ~ 27 and 22 cal ka BP from a depth of ~ 1 m below the ground surface and one age of ~ 41 ka BP from a depth of 18.5 m. Additionally, a single age of ~ 42 cal ka BP was obtained from a depth of ~ 11 m, though the sample is considered less reliable than the rootlets on account of its composite nature (leaf, twigs, and Cyperaceae remains). The three pIRIR ages of 61.0 ± 3.7 ka, 50.9 ± 3.5 ka, and 45.5 ± 2.9 ka are somewhat greater than the ^{14}C and OSL ages, which we attribute to residual doses within the K-feldspars. No deduced age is available from the $^{36}\text{Cl}/\text{Cl}$ method, because we used ice wedge B17-IW5 from the upper ice complex as a reference and hence cannot calculate an age for ice wedge B17-IW4. Overall, we infer that the upper sand unit accumulated during MIS 3 and 2, though further dating is needed to corroborate this and to determine the time when deposition commenced.

Palaeoenvironmental significance

The dating results (Fig. 8) suggest that the lower ice complex formed during or before MIS 16 (~ 677 – 622 ka), a pronounced glacial period with substantial glaciations in the Northern Hemisphere (Batchelor *et al.*, 2019). Direct dating of permafrost to ~ 650 ka represents the oldest known permafrost in western Beringia and the second-oldest known ice in the Northern Hemisphere. The ancient permafrost at Batagay dates from the early part of the Middle Pleistocene, which began ~ 774 ka, during MIS 19 (Head, 2019). Only permafrost from the Klondike, Yukon, in eastern Beringia, is known to be older than that at Batagay and dates to ~ 740 ka (Froese *et al.*, 2008). The ancient permafrost at Batagay indicates that ice-rich permafrost has survived repeated episodes of climate warming, including multiple glacial terminations and even the exceptionally warm and wet conditions during

a “super-interglaciation” at 420 ka (MIS 11c; Vaks et al., 2013, 2020; Wennrich et al., 2016), the warmer-than-present last interglaciation (MIS 5e; CAPE, 2006), and the warm climate of the Holocene thermal maximum (Kaufman et al., 2004; Renssen et al., 2009). Clearly, the remaining lower ice complex, buried under ~50 m of covering permafrost deposits, has been resilient to natural climate and environmental change over multiple glacial–interglacial cycles (Fig. 8), though it is vulnerable to anthropogenic disturbance and local thermokarst activity (Murton et al., in press). Additionally, the thaw unconformity and erosional surface at the top of the lower ice complex (Fig. 3) indicate that this ice complex experienced partial thaw and erosion before deposition of the lower sand unit; thaw and erosion of unknown magnitude occurred on one or more occasions between MIS 16 and 4.

The direct dating of permafrost at Batagay to ~650 ka or earlier can be compared with inferences about permafrost conditions based on indirect evidence from western Beringia. The onset of permafrost during the late Pliocene has been inferred from pollen spectra consistent with a change in vegetation toward tundra and cold-adapted larch–birch forest from samples in and near Lake El’gygytyn in Chukotka, northeastern Russia (Glushkova and Smirnov, 2007; Andreev et al., 2014; Brigham-Grette et al., 2013; Fig. 1a) and from a reduction of Ca²⁺ flux into the lake, attributed to reduced chemical weathering in the catchment, after 3.3 Ma, during the M2 cooling event (Wennrich et al., 2014). The present study cannot confirm a late Pliocene onset of permafrost in western Beringia, because such permafrost may have thawed and re-formed multiple times during the late Pliocene and Early Pleistocene, but it does provide robust evidence that the permafrost of the lower ice complex has persisted at the Batagay site continuously since at least ~650 ka. Such persistence is consistent with the absence of observed speleothem growth—due to permafrost freezing up the karst vadose system in caves—since ~429 ka (MIS 11) in a Siberian cave (Ledyanaya Lenskaya) near the boundary between continuous and discontinuous permafrost (see Vaks et al., 2013, 2020).

Given its great age, the permafrost of the lower ice complex offers excellent potential for preservation of ancient flora and fauna, including remains of environmental DNA as well as palaeoclimate proxies (ice, sediments), back to the early Middle Pleistocene. However, some limitations must be considered. Most prominent are gaps in the stratigraphy (e.g., erosional surfaces) that complicate correlation of the stratigraphy at Batagay with those from other Beringian sites.

CONCLUSIONS AND OUTLOOK

Four conclusions are drawn from this study. First, good agreement of age estimates between two independent dating methods (pIRIR dating of K-feldspar from sand and ³⁶Cl/Cl dating of ice-wedge ice) provides a reasonable degree of confidence in dating ancient permafrost that has persisted since before the last interglaciation.

Second, the ³⁶Cl/Cl method provides a valuable means of dating ancient ground ice. The method is more applicable to old (Middle Pleistocene) ice wedges than to younger (Late Pleistocene) ones.

Third, if the pIRIR and ³⁶Cl/Cl dating are correct, ancient permafrost within the lower ice complex at Batagay megaslump has been preserved since the early Middle Pleistocene (~650 ka or earlier) and represents the oldest known permafrost that has

been directly dated in western Beringia and the second-oldest known dated permafrost in the Northern Hemisphere.

Fourth, the ancient permafrost at Batagay has been resilient to multiple episodes of climate warming and environmental change but is vulnerable to local disturbance by anthropogenic and thermokarst activity.

In terms of outlook, multiple dating methods—including ¹⁴C, pIRIR, OSL, and ³⁶Cl/Cl—are needed to date ancient permafrost, and a future priority should be to apply them to silt-rich yedoma in western Beringia in which palaeomagnetic dating can be added to the methods used in the present study. Further sampling campaigns should seek to secure larger (~1 kg) sediment samples to expand the number of luminescence aliquots and range of measurements, including direct assessment of pIRIR₂₅₀ residual doses, post-H₂SiF₆ quartz analysis, and investigation of the quartz age barrier at Batagay through thermally transferred OSL dating (Duller and Wintle, 2012). Tephros or microtephros should also be sought in western Beringia, as they have proved invaluable in dating of permafrost sequences in eastern Beringia. Future permafrost dating studies at the Batagay megaslump are needed to confirm the obtained results and to shed light on the discontinuities between the lower ice complex and the lower sand as well as the lower sand and the woody debris layer.

Acknowledgments. Parts of this research were carried out at the Ion Beam Centre (IBC) at the Helmholtz-Zentrum Dresden-Rossendorf e. V., a member of the Helmholtz Association. We would like to thank the DREAMS operator team, Roberto Llovera, Collin Tiessen, and René Ziegenrucker, for their assistance with AMS measurements. We thank Kseniia Ashastina (Max Planck Institute for the Science of Human History) and Petr Danilov and Vasily Boeskorov (North-East Federal University) for field assistance in 2017. We thank referees Duane Froese and Olav Lian and editors Jeff Pigati and Nicolas Lancaster for their valuable comments on earlier versions of the article.

Financial Support. This research was supported by the Deutsche Forschungsgemeinschaft (grant nos. OP217/3-1, OP217/4-1, and WE4390/7-1) and by the Royal Society (grant no. IE150192 to Mary Edwards, University of Southampton).

REFERENCES

- Adamic, G., Aitken, M.J., 1998. Dose-rate conversion factors: new data. *Ancient TL* 16, 37–50.
- Aitken, M.J., 1998. *An Introduction to Optical Dating. The Dating of Quaternary Sediments by the Use of Photon-Stimulated Luminescence*. Oxford University Press, Oxford.
- Andreev, A.A., Grosse, G., Schirrmeister, L., Kuzmina, S.A., Novenko, E.Yu., Bobrov, A.A., Tarasov, P.E., et al., 2004. Late Saalian and Eemian palaeoenvironmental history of the Bol’shoy Lyakhovskiy Island (Laptev Sea region, Arctic Siberia). *Boreas* 33, 319–348.
- Andreev, A.A., Tarasov, P.E., Wennrich, V., Raschke, E., Herzschuh, U., Nowaczyk, N.R., Brigham-Grette, J., Melles, M., 2014. Late Pliocene and early Pleistocene environments of the north-eastern Russian Arctic inferred from the Lake El’gygytyn pollen record. *Climate of the Past* 10, 1017–1039.
- Ashastina, K., Kuzmina, S., Rudaya, N., Troeva, E., Schoch, W. H., Römermann, C., Reinecke, J., et al., 2018. Woodlands and steppes: Pleistocene vegetation in Yakutia’s most continental part recorded in the Batagay permafrost sequence. *Quaternary Science Reviews* 196, 38–61.
- Ashastina, K., Schirrmeister, L., Fuchs, M., Kienast, F., 2017. Palaeoclimate characteristics in interior Siberia of MIS 6–2: first insights from the Batagay permafrost mega-thaw slump in the Yana Highlands. *Climate of the Past* 13, 795–818.
- Auclair, M., Lamothe, M., Huot, S., 2003. Measurement of anomalous fading for feldspar IRSL using SAR. *Radiation Measurements* 37, 487–492.

- Batchelor, C.L., Margold, M., Krapp, M., Murton D.K., Dalton, A.S., Gibbard, P.L., Stokes, C.R., Murton, J.B., Manica, A., 2019. The configuration of Northern Hemisphere ice sheets through the Quaternary. *Nature Communications* **10**, 3713.
- Berger, G.W., Mulhern, P.J., Huntley, D.J., 1980. Isolation of silt-sized quartz from sediments. *Ancient TL*, **11**, 147–152.
- Blinov, A., Alfimov, V., Beer, J., Gilichinsky, D., Schirrmeyer, L., Kholodov, A., Nikolskiy, P., Opel, T., Tikhomirov, D., Wetterich, S., 2009. $^{36}\text{Cl}/\text{Cl}$ ratio in ground ice of East Siberia and its application for chronometry. *Geochemistry, Geophysics, Geosystems* **10**, Q0AA03.
- Botter-Jensen, L., McKeever, S.W.S., Wintle, A.G., 2003. *Optically Stimulated Luminescence Dosimetry*. Elsevier, Amsterdam.
- Botter-Jensen, L., Mejdahl, V., Murray, A.S., 1999. New light on OSL. *Quaternary Science Reviews* **18**, 303–310.
- Brigham-Grette, J., Melles, M., Minyuk, P., Andreev, A., Tarasov, P., DeConto, R., Koenig, S., *et al.*, 2013. Pliocene warmth, extreme polar amplification, and stepped Pleistocene cooling recorded in NE Russia. *Science* **340**, 1421–1427.
- Buylaert, J.P., Murray, A.S., Thomsen, K.J., Jain, M., 2009. Testing the potential of an elevated temperature IRSL signal from K-feldspar. *Radiation Measurements* **44**, 560–565.
- [CAPE] CircumArctic PaleoEnvironments Last Interglacial Project Members, 2006. Last Interglacial Arctic warmth confirms polar amplification of climate change. *Quaternary Science Reviews* **25**, 1383–1400.
- Colarossi, D., Duller, G.A.T., Roberts, H.M., 2018. Exploring the behaviour of luminescence signals from feldspars: implications for the single aliquot regenerative dose protocol. *Radiation Measurements* **109**, 35–44.
- Davies, L.J., Jensen, B.J.L., Froese, D.G., Wallace, K.L., 2016. Late Pleistocene and Holocene tephrostratigraphy of interior Alaska and Yukon: key beds and chronologies over the past 30,000 years. *Quaternary Science Reviews* **146**, 28–53.
- Demuro, M., Arnold, L.J., Froese, D.G., Roberts, R.G., 2013. OSL dating of loess deposits bracketing Sheep Creek tephra beds, northwest Canada: dim and problematic single-grain OSL characteristics and their effect on multi-grain age estimates. *Quaternary Geochronology* **15**, 67–87.
- Duller, G.A.T., 2003. Distinguishing quartz and feldspar in single grain luminescence measurements. *Radiation Measurements* **37**, 161–165.
- Duller, G.A.T., 2015. The Analyst software package for luminescence data: overview and recent improvements. *Ancient TL* **33**, 35–42.
- Duller, G.A.T., Wintle, A.G., 2012. A review of the thermally transferred optically stimulated luminescence signal from quartz for dating sediments. *Quaternary Geochronology* **7**, 6–20.
- Durcan, J.A., King, G.E., Duller, G.A.T., 2015. DRAC: Dose Rate and Age Calculator for trapped charge dating. *Quaternary Geochronology* **28**, 54–61.
- Endt, P.M., 1990. Energy-levels of A = 21–44 nuclei (VII). *Nuclear Physics A* **521**, 1–400.
- Ewing, S.A., Paces, J.B., O'Donnell, J.A., Jorgenson, M.T., Kanevskiy, M.Z., Aiken, G.R., Shur, Y., Harden, J.W., Striegl, R., 2015. Uranium isotopes and dissolved organic carbon in loess permafrost: modeling the age of ancient ice. *Geochimica et Cosmochimica Acta* **152**, 143–165.
- Firestone, R.B., 1996. *Table of Isotopes*. 8th ed. Shirley, V.S. (Ed.). Wiley-Interscience, New York.
- Froese, D.G., Westgate, J.A., Reyes, A.V., Enkin, R.J., Preece, S.J., 2008. Ancient permafrost and a future, warmer Arctic. *Science* **321**, 1648.
- Fuchs, M.C., Böhlert, R., Krbetschek, M., Preusser, F., Egli, M., 2013. Exploring the potential of luminescence methods for dating Alpine rock glaciers. *Quaternary Geochronology* **18**, 17–33.
- Galbraith, R.F., Roberts, R.G., Laslett, G.M., Yoshida, H., Olley, J.M., 1999. Optical dating of single and multiple grains of quartz from Jinmium rock shelter (northern Australia): Part I, Experimental design and statistical models. *Archaeometry* **41**, 339–364.
- Gilichinsky, D.A., Nolte, E., Basilyan, A.E., Beer, J., Blinov, A., Lazarev, V., Kholodov, A., *et al.*, 2007. Dating of syngenetic ice wedges in permafrost with ^{36}Cl and ^{10}Be . *Quaternary Science Reviews* **26**, 1547–1556.
- Glushkova, O.Yu., 2011. Late Pleistocene glaciations in North-East Asia. In: Ehlers, J., Gibbard, P.L., Hughes, P.D. (Eds.), *Quaternary Glaciations - Extent and Chronology: A Closer Look*. Developments in Quaternary Science 15. Elsevier, Amsterdam, Netherlands, pp. 865–875.
- Glushkova, O. Yu., Smirnov, N.N., 2007. Pliocene to Holocene geomorphic evolution and paleogeography of the El'gygytyn Lake region, NE Russia. *Journal of Paleolimnology* **37**, 37–47.
- Graedel, T.E., Keene, W.C., 1996. The budget and cycle of Earth's natural chlorine. *Pure and Applied Chemistry* **68**, 1689–1697.
- Head, M.J., 2019. Formal subdivision of the Quaternary System/Period: present status and future directions. *Quaternary International* **500**, 32–51.
- Heikkilä, U., Beer, J., Feichter, J., 2008. Modeling cosmogenic radionuclides Be-10 and Be-7 during the Maunder Minimum using the ECHAM5-HAM General Circulation Model. *Atmospheric Chemistry and Physics* **8**, 2797–2809.
- Huntley, D.J., Baril, M.R., 1997. The K content of K-feldspars being measured in optical dating or in thermoluminescence dating. *Ancient TL* **15**, 11–13.
- Huntley, D.J., Godfrey-Smith, D.I., Thewalt, M.L.W., 1985. Optical dating of sediments. *Nature* **313**, 105–107.
- Huntley, D.J., Lamothe, M., 2001. Ubiquity of anomalous fading in K-feldspars and the measurement and correction for it in optical dating. *Canadian Journal of Earth Sciences* **38**, 1093–1106.
- Huntley, D.J., Lian, O.B., 2006. Some observations on the tunnelling of trapped electrons in feldspars. *Quaternary Science Reviews* **25**, 2503–2512.
- Hütt, G., Jaek, I., Tchonka, J., 1988. Optical dating: K-feldspars optical response stimulation spectra. *Quaternary Science Reviews* **7**, 381–386.
- Ivanova, R.N., 2003. Seasonal thawing of soils in the Yana River valley, northern Yakutia. In: Phillips, M., Springman, S.M., Arenson, L.U. (Eds.), *Permafrost, Proceedings of the Eighth International Conference on Permafrost, Zurich, Switzerland, 21–25 July 2003*. Vol. 1. A. A. Balkema, Lisse, Netherlands, pp. 479–482.
- Jackson, M.L., Sayin, M., Clayton, R.N., 1976. Hexafluorosilicic acid reagent modification for quartz isolation. *Soil Science Society of America Journal* **40**, 958–960.
- Jain, M., Choi, J.H., Thomas, P.J., 2008. The ultrafast OSL component in quartz: origins and implications. *Radiation Measurements* **43**, 709–714.
- Kars, R.H., Wallinga, J., Cohen, K.M., 2008. A new approach towards anomalous fading correction for feldspar IRSL dating—tests on samples in field saturation. *Radiation Measurements* **43**(2–6), 786–790.
- Kaufman, D.S., Ager, T.A., Anderson, N.J., Anderson, P.M., Andrews, J.T., Bartlein, P.J., Brubaker, L.B., *et al.*, 2004. Holocene thermal maximum in the western Arctic (0–180°W). *Quaternary Science Reviews* **23**, 529–560.
- Kennedy, K.E., Froese, D.G., Zazula, G.D., Lauriol, B., 2010. Last Glacial Maximum age for the northwest Laurentide maximum from the Eagle River spillway and delta complex, northern Yukon. *Quaternary Science Reviews* **29**, 1288–1300.
- Krause, E.E., Krbetschek, M.R., Stolz, W., 1997. Dating of Quaternary lake sediments from the Shirmacher Oasis (East Antarctica) by infra-red stimulated luminescence (IRSL) detected at the wavelength of 560 nm. *Quaternary Science Reviews* **16**, 387–392.
- Kreutzer, S., Schmidt, C., Fuchs, M.C., Dietze, M., Fischer, M., Fuchs, M., 2012. Introducing an R package for luminescence dating analysis. *Ancient TL* **30**, 1–8.
- Kunitsky, V.V., Syromyatnikov, I.I., Schirrmeyer, L., Skachov, Y.B., Grosse, G., Wetterich, S., Grigoriev, M.N., 2013. Ice-rich permafrost and thermal denudation in the Batagay area (Yana Upland, East Siberia). *Kriosfera Zemli (Earth Cryosphere)* **17**, 56–58. (in Russian)
- Kuznetsova, L.P., 1998. *Atmospheric Moisture Content and Transfer over the Territory of the Former USSR*. Research Report 4. Institute for Hydrospheric-Atmospheric Science, Nagoya, Japan, pp. 145–151.
- Li, B., Jacobs, Z., Roberts, R.G., Li, S-H., 2014a. Review and assessment of the potential of post-IR IRSL dating methods to circumvent the problem of anomalous fading in feldspar luminescence. *Geochronometria* **41**, 178–201.
- Li, B., Li, S-H., 2008. Investigations of the dose-dependent anomalous fading rate of feldspar from sediments. *Journal of Physics D: Applied Physics* **41**, 225502.
- Li, B., Li, S-H., 2011. Luminescence dating of K-feldspar from sediments: a protocol without anomalous fading correction. *Quaternary Geochronology* **6**, 468–479.

- Li, B., Roberts, R.G., Jacobs, Z., Li, S-H., 2014b. A single-aliquot luminescence dating procedure for K-feldspar based on the dose-dependent MET-pIRIR signal sensitivity. *Quaternary Geochronology* **20**, 51–64.
- Li, B., Roberts, R.G., Jacobs, Z., Li, S-H., Guo, Y-J., 2015. Construction of a 'global standardised growth curve' (gSGC) for infrared stimulated luminescence dating of K-feldspar. *Quaternary Geochronology* **27**, 119–130.
- Lisiecki, L.E., Raymo, M.E., 2005. A Pliocene–Pleistocene stack of 57 globally distributed benthic $\delta^{18}\text{O}$ records. *Paleoceanography* **20**, PA1003.
- Lowick, S.E., Trauerstein, M., Preusser, F., 2012. Testing the application of post IS IRSL dating to fine grain waterlain sediments. *Quaternary Geochronology* **8**, 33–40.
- Mann, D.H., Groves, P., Reanier, R.E. Kunz, M.L., 2010. Floodplains, permafrost, cottonwood trees, and peat: what happened the last time climate warmed suddenly in arctic Alaska. *Quaternary Science Reviews* **29**, 3812–3830.
- Markey, B.G., Bøtter-Jensen, L., Duller, G.A.T., 1997. A new flexible system for measuring thermally and optically stimulated luminescence. *Radiation Measurements* **27**, 83–89.
- Masarik, J., Beer, J., 2009. An updated simulation of particle fluxes and cosmogenic nuclide production in the Earth's atmosphere. *Journal of Geophysical Research* **114**, D11103.
- Mejdahl, V., 1979. Thermoluminescence dating: beta-dose attenuation in quartz grains. *Archaeometry* **21**, 61–72.
- Merchel, S., Beutner, S., Opel, T., Rugel, G., Scharf, A., Tiessen, C., Weiß, S., Wetterich, S., 2019. Attempts to understand potential deficiencies in chemical procedures for AMS. *Nuclear Instruments and Methods in Physics Research B* **456**, 186–192.
- Merchel, S., Braucher, R., Alfimov, V., Bichler, M., Bourlès, D.L., Reitner, J.M., 2013. The potential of historic rock avalanches and man-made structures as chlorine-36 production rate calibration sites. *Quaternary Geochronology* **18**, 54–62.
- Merchel, S., Bremer, W., Alfimov, V., Arnold, M., Aumaitre, G., Benedetti, L., Bourlès, D.L., et al., 2011. Ultra-trace analysis of ^{36}Cl by accelerator mass spectrometry: an interlaboratory study. *Analytical and Bioanalytical Chemistry* **400**, 3125–3132.
- Murray, A.S., Wintle, A.G., 2000. Luminescence dating of quartz using an improved single-aliquot regenerative-dose protocol. *Radiation Measurements* **32**, 57–73.
- Murray, A.S., Wintle, A.G., 2003. The single aliquot regenerative dose protocol: potential for improvements in reliability. *Radiation Measurements* **37**, 377–381.
- Murton, J.B., Bateman, M.D., Telka, A., Waller, R., Whiteman, C.A., Kuzmina, S., 2017a. Early to Mid Wisconsin fluvial deposits and palaeoenvironment of the Kidluit Formation, Tuktoyaktuk Coastlands, western Arctic Canada. *Permafrost and Periglacial Processes* **28**, 523–533.
- Murton, J.B., Edwards, M.E., Lozhkin, A.V., Anderson, P.M., Savvinov, G.N., Bakulina, N., Bondarenko, O.V., et al., 2017b. Preliminary palaeoenvironmental analysis of permafrost deposits at Batagaika megaslump, Yana Uplands, northern Siberia. *Quaternary Research* **87**, 314–330.
- Murton, J.B., Goslar, T., Edwards, M.E., Bateman, M.D., Danilov, P.P., Savvinov, G.N., Gubin, S.V., Ghaleb, B., Haile, J., Kanevskiy, M., Lozhkin, A.V., Lupachev, A.V., Murton, D.K., Shur, Y., Tikhonov, A., Vasil'chuk, A.C., Vasil'chuk, Y.K., Wolfe, S.A., 2015. Palaeoenvironmental interpretation of yedoma silt (ice complex) deposition as cold-climate loess, Duvanny Yar, northeast Siberia. *Permafrost and Periglacial Processes* **26**, 207–288.
- Murton, J.B., Savvinov, G.N., Opel, T., (in press). Batagay megaslump. In: Panin, A.V., Romanenko, F.A. (Eds.), *Landscapes and Landforms of Russia*. Vol. 3, Russian Arctic. Springer, Cham, Switzerland.
- Muscheler, R., Joos, F., Beer, J., Muller, S., Vonmoos, M., Snowball, I., 2007. Solar activity during the last 1000 yr inferred from radionuclide records. *Quaternary Science Reviews* **26**, 82–97.
- Opel, T., Meyer, H., Wetterich, S., Laepple, T., Dereviagin, A., Murton, J.B., 2018. Ice wedges as archives of winter palaeoclimate: a review. *Permafrost and Periglacial Processes* **29**, 199–209.
- Opel, T., Murton, J.B., Wetterich, S., Meyer, H., Ashastina, K., Günther, F., Grotheer, H., et al., 2019. Past climate and continentality inferred from ice wedges at Batagay megaslump in the Northern Hemisphere's most continental region, Yana Highlands, interior Yakutia. *Climate of the Past* **15**, 1443–1461.
- Opel, T., Wetterich, S., Meyer, H., Dereviagin, A.Y., Fuchs, M.C., Schirmer, L., 2017. Ground-ice stable isotopes and cryostratigraphy reflect late Quaternary palaeoclimate in the northeast Siberian Arctic (Oyogos Yar coast, Dmitry Laptev Strait). *Climate of the Past* **13**, 587–611.
- Past Interglacials Working Group of PAGES, 2016. Interglacials of the last 800,000 years. *Reviews of Geophysics* **54**, 162–219.
- Pavetich, S., Akhmadaliev, S., Arnold, M., Aumaitre, G., Bourlès, D., Buchriegler, J., Golser, R., et al., 2014. Interlaboratory study of the ion source memory effect in ^{36}Cl accelerator mass spectrometry. *Nuclear Instruments and Methods in Physics Research B* **329**, 22–29.
- Prescott, J.R. and Hutton, J.T., 1994. Cosmic ray contributions to dose rates for luminescence and ESR dating: large depths and long-term time variations. *Radiation Measurements* **23**, 497–500.
- Preusser, F., Geth, M.A., Schlüchter, C., 2003. Timing of Late Pleistocene climate change in lowland Switzerland. *Quaternary Science Reviews* **22**, 1435–1445.
- Preusser, F., Müller, B.U., Schlüchter, C., 2001. Luminescence dating of sediments from the Luthern Valley, central Switzerland, and implications for the chronology of the last glacial cycle. *Quaternary Research* **55**, 215–222.
- Preusser, F., Schlüchter, C., 2004. Dates from an important early Late Pleistocene ice advance in the Aare valley, Switzerland. *Eclogae Geologicae Helvetiae* **97**, 245–253.
- Qin, J., Chen, J., Li, Y., Zhou, L., 2018. Initial sensitivity change of K-feldspar pIRIR signals due to uncompensated decrease in electron trapping probability: evidence from radiofluorescence measurements. *Radiation Measurements* **120**, 131–136.
- Reimer, P., Austin, W.E.N., Bard, E., Bayliss, A., Blackwell, P.G., Bronk Ramsey, C., Butzin, M., et al., 2020. The IntCal20 Northern Hemisphere radiocarbon age calibration curve (0–55 cal kBP). *Radiocarbon* **62**, 725–757.
- Reimer, P.J., Brown, T.A., Reimer, R.W., 2004. Discussion: Reporting and calibration of post-bomb C-14 data. *Radiocarbon* **46**, 1299–1304.
- Renssen, H., Seppä, H., Heiri, O., Roche, D.M., Goosse, H., Fichet, T., 2009. The spatial and temporal complexity of the Holocene thermal maximum. *Nature Geoscience* **2**, 411–414.
- Richter, D., Richter, A., Dornich, K., 2015. Lexsyg Smart – a luminescence detection system for dosimetry, material research and dating application. *Geochronometria* **42**, 202–209.
- Roberts, H.M., 2012. Testing Post-IR IRSL protocols for minimising fading in feldspars, using Alaskan loess with independent chronological control. *Radiation Measurements* **47**, 716–724.
- Rugel, G., Pavetich, S., Akhmadaliev, S., Enamorado Baez, S.M., Scharf, A., Ziegenrucker, R., Merchel, S., 2016. The first four years of the AMS-facility DREAMS: status and developments for more accurate radionuclide data. *Nuclear Instruments and Methods in Physics Research B* **370**, 94–100.
- Stevens, T., Markovic, S.B., Zech, M., Hambach, U., Sümeji, P., 2011. Dust deposition and climate in the Carpathian Basin over an independently dated last glacial–interglacial cycle. *Quaternary Science Reviews* **30**, 662–681.
- Stuiver, M., Reimer, P., 1993. Extended ^{14}C data base and revised CALIB 3.0 ^{14}C age calibration program. *Radiocarbon* **35**, 215–230.
- Thiel, C., Buylaert, J-P., Murray, A.S., Tsukamoto, S., 2011. On the applicability of post-IR IRSL dating to Japanese loess. *Geochronometria* **38**, 369–378.
- Thomsen, K.J., Murray, A.S., Jain, M., Botter-Jensen, L., 2008. Laboratory fading rates of various luminescence signals from feldspar-rich sediment extracts. *Radiation Measurements* **43**, 1474–1486.
- Tikhomirov D.A., Blinov A.V., 2009. Cosmogenic ^{36}Cl as a tool for dating permafrost ice. *Bulletin of the Russian Academy of Sciences: Physics* **73**, 384–386.
- Vaks, A., Gutareva, O.S., Breitenbach, S.F.M., Avirmed, E., Mason, A.J., Thomas, A.L., Osinzev, A.V., Kononov, A. M., Henderson, G.M., 2013. Speleothems reveal 500,000 year history of Siberian permafrost. *Science* **340**, 183–186.
- Vaks, A., Mason, A.J., Breitenbach, S.F.M., Kononov, A.M., Osinzev, A.V., Rosenshaft, M., Borshevsky, A., Gutareva, O.S., Henderson, G.M., 2020.

- Palaeoclimate evidence of vulnerable permafrost during times of low sea ice. *Nature* **577**, 221–225.
- Vasil'chuk, Y.K., Vasil'chuk, J.Y., 2019. The first AMS dating of organic microinclusions in an ice wedge of the upper part of the Batagay yedoma megaslump (Yakutia). *Doklady Earth Sciences* **489**, 1318–1321.
- Vasil'chuk, Y.K., Vasil'chuk, J.Y., Budantseva, N.A., Vasil'chuk, A.C., 2020. New AMS dates of organic microinclusions in ice wedges of the lower part of the Batagay Yedoma, Yakutia. *Doklady Earth Sciences* **490**, 100–103.
- Wallinga, J., 2008. Optically stimulated luminescence dating of fluvial deposits: a review. *Boreas* **31**, 303–322.
- Wennrich, V., Andreev, A.A., Tarasov, P.E., Fedorov, G., Zhao, W., Gebhardt, C.A., Meyer-Jacob, C., *et al.*, 2016. Impact processes, permafrost dynamics, and climate and environmental variability in the terrestrial Arctic as inferred from the unique 3.6 Myr record of Lake El'gygytgyn, far east Russia—a review. *Quaternary Science Reviews* **147**, 221–244.
- Wennrich, V., Minyuk, P.S., Borkhodoev, V., Francke, A., Ritter, B., Nowaczyk, N.R., Sauerbrey, M.A., Brigham-Grette, J., Melles, M., 2014. Pliocene to Pleistocene climate and environmental history of Lake El'gygytgyn, Far East Russian Arctic, based on high-resolution inorganic geochemistry data. *Climate of the Past* **10**, 1381–1399.
- Wetterich, S., Rudaya, N., Kuznetsov, V., Maksimov, F., Opel, T., Meyer, H., Günther, F., Bobrov, A., Raschke, E., Zimmermann, H.H., Strauss, J., Fuchs, M., Schirrmeister, L., 2019. Ice Complex formation on Bol'shoy Lyakhovsky Island (New Siberian Archipelago, East Siberian Arctic) since about 200 ka. *Quaternary Research* **92**, 530–548.
- Wetterich, S., Tumskey, V., Rudaya, N., Andreev, A.A., Opel, T., Meyer, H., Schirrmeister, L., 2014. Ice Complex formation in arctic East Siberia during the MIS3 Interstadial. *Quaternary Science Reviews* **84**, 39–55.
- Wetterich, S., Tumskey, V., Rudaya, N., Kuznetsov, V., Maksimov, F., Opel, T., Meyer, H., Andreev, A.A., Schirrmeister, L., 2016. Ice Complex permafrost of MIS5 age in the Dmitry Laptev Strait coastal region (East Siberian Arctic). *Quaternary Science Reviews* **147**, 298–311.
- Wintle, A.G., 1973. Anomalous fading of thermoluminescence in mineral samples. *Nature* **245**, 143–144.
- Wintle, A.G., 2008. Luminescence dating: where it has been and where it is going. *Boreas* **37**, 471–482.
- Wintle, A.G., Murray, A.S., 2006. A review of quartz optically stimulated luminescence characteristics and their relevance in single-aliquot regeneration dating protocols. *Radiation Measurements* **4**, 369–391.
- Yershov, E., 1998. *General Geocryology*. Cambridge University Press, Cambridge.
- Zhang, J., Li, S.-H., 2020. Review of the post-IR IRSL dating protocols of K-Feldspar. *Methods and Protocols* **3**(1), 7.
- Zimmerman, D.W., 1971. Thermoluminescent dating using fine grains from pottery. *Archaeometry* **13**, 29–52.