

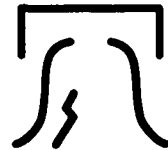
# ICSLP 96

The International Conference on  
Spoken Language Processing  
Wyndham Franklin Plaza Hotel  
Philadelphia, PA, USA  
October 3-6, 1996

ICSLP 96 is an interdisciplinary conference covering all topics related to processing spoken language by persons and machines. The fourth in this series of biennial conferences, ICSLP 96 is expected to bring together an international community of approximately 800 researchers, developers, and clinicians. ICSLP 96 will feature technical sessions of both oral and poster format, plenary talks, commercial exhibits, and daily special sessions. In addition, several satellite workshops will be held in conjunction with the conference. Special sessions topics for ICSLP 96 will include applications of spoken language processing for persons with disabilities.

## For more information, contact:

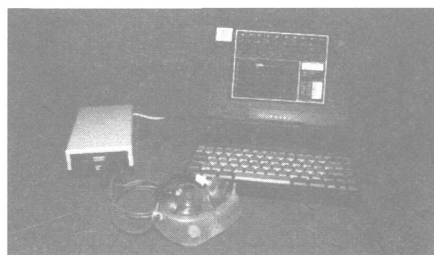
ICSLP96  
Applied Science and Engineering Laboratories,  
A.I. duPont Institute  
Wilmington, DE, USA, 19899  
Phone: (302) 651-6830 TDD: (302) 651-6834  
Fax: (302) 651-6895 Email: ICSLP96@asel.udel.edu  
WWW: <http://www.asel.udel.edu/speech/icslp.html>



# MILLGRANT WELLS LTD

SOUND ANALYSIS AND VOICE PROFILE

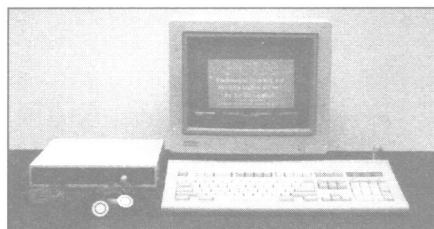
*Nasal-Oral  
Measurement*



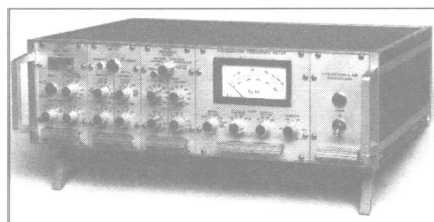
*Electro-  
Palatograph*



*Electro-  
Laryngograph*



*Pitch Intensity  
& Myography*



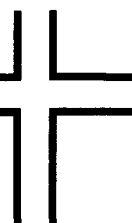
---

---

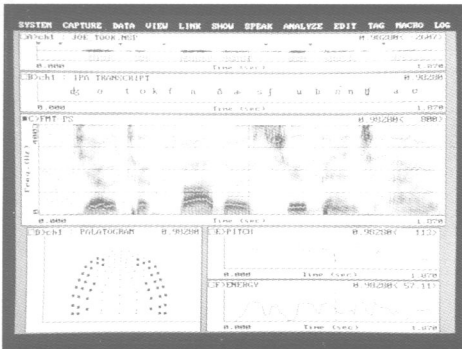
Further Details From:

**MILLGRANT WELLS LIMITED**

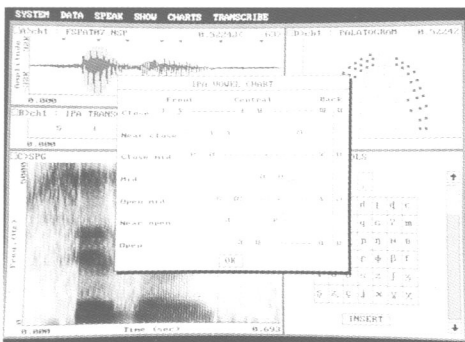
(P.O. Box 3), 7 STANLEY ROAD, RUGBY CV21 3UF, ENGLAND.  
Tel: +44 (0) 1788 - 561185 Fax: +44 (0) 1788 - 543218



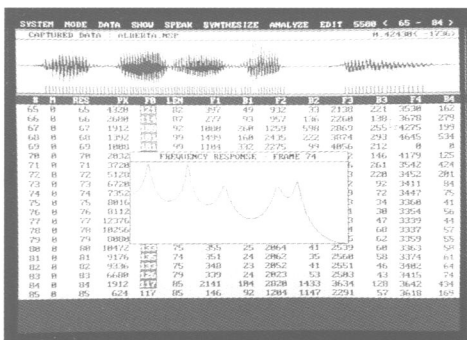
# CSL offers the right tools for acoustic phoneticians.



The CSL contains extensive speech analysis capabilities. Files acquired with Kay's Palatometer allow physiological data to be compared to acoustic results.



The IPA Transcription Tutorial is presented in a multimedia environment. When students are unsure of proper transcription, a vowel or consonant chart can be displayed which speaks each phoneme and provides a spectrographic display with a click of the mouse.



The LPC numerical editor allows users to mark columns of data (e.g., specific formants or  $F_0$  values) for quick, precise editing. A variety of functions is available.

CSL™/Computerized Speech Lab offers extensive analysis formats, editing functions, and other core capabilities that make it the instrument of choice for acoustic phoneticians. The CSL is a completely integrated system. It includes both hardware and software and works on a host PC personal computer. Some exciting features and options include:

## Features

- Dual-channel data acquisition with CD-quality audio playback fidelity (four-channel option available)
- Extensive analysis formats including spectrograms, waveforms, LPC (slices and formant history), pitch, energy, and more
- On-screen IPA transcription tool with all 196 characters including diacritics
- Integration with Palatometer linguapalatal contact patterns to link phoneme production and acoustic results
- Extensive commands for editing, digital filtering, warping, splicing, mixing, and appending speech samples for precise manipulation

## Programs for Research and Teaching

- Speech synthesis (LPC-derived, residual-driven, and pitch-synchronous) with both graphic and numerical editing of formant frequencies, bandwidths, and fundamental frequency
- Multimedia IPA teaching software with each spoken phoneme analyzed spectrographically and with built-in exercises for student practice
- Phonetic database offers 82 MB of speech sampled from 25 languages with over 1,870 samples on CD-ROM
- Real-time options including pitch, spectrograms, and LPC-based spectra; ideal for classroom demonstrations or lab exercises

Kay offers competitive package pricing and excellent support for the CSL. Call 1-800-289-5297 for more information.

**KAY** Kay Elemetrics Corp.  
2 Bridgewater Lane  
Lincoln Park, NJ 07035-1488 USA  
TEL: 1-800-289-5297 (In USA and Canada).  
(201) 227-2000 • FAX: (201) 227-7760

CSL™ is a trademark of Kay Elemetrics Corp.

# Journal of the International Phonetic Association

## NOTES FOR CONTRIBUTORS

**Policy.** The *Journal of the International Phonetic Association* (formerly entitled *Le Maître Phonétique*), is concerned with all aspects of the theory, description, and use of phonetics and phonology. Contributions are subject to review, and to the Editor's final decision as to publication. The primary language of the *Journal* is English, though contributions in other languages of wide scholarly currency, such as French, German, and Russian will be accepted. Contributions not written in English should be accompanied by an English abstract.

**Manuscript style.** Contributors are encouraged to submit their text, if possible, on Macintosh diskette (800Kb or 1.4Mb), in 12 pt. Times font. The *Journal* is set using Microsoft Word, which is compatible with MacWrite and many other word-processing programs. Disks from DOS-based computer systems (5<sup>1</sup>/<sub>4</sub>" or 3<sup>1</sup>/<sub>2</sub>"") can also be used if a Macintosh is not available; in such cases the text file should preferably be in Word or WordPerfect format or in ASCII. In other circumstances, contributions should be submitted in typewritten or computer printout form, in double spacing with wide margins, printed on one side of the sheet only. The *Journal* uses American standard spelling and punctuation. The text should use two levels of headings: (1) Main headings are placed above the paragraph, numbered, and formatted flush left, bold; (2) subheadings are also placed above the paragraph, unnumbered, and formatted flush left, italic, with a period following. Acknowledgments (with a centered bold heading) follow the text and precede the references. Tables should be included in the text at the appropriate location. The style conventions of the *Journal* should be followed wherever possible, and the Editor reserves the right to alter contributions so that they conform to house style.

**Footnotes and references.** Footnotes should be avoided as far as possible. Citations are to be made IN THE TEXT by giving in parentheses the name of the author and the year of publication, and where relevant the page(s) referred to: e.g. "... (Jones 1963) ...", or "... Jones (1983: 453) ...". Where essential, footnotes should be indicated in superscript consecutively throughout the text, and collected as a separate sheet at the end of the manuscript. All works referred to should be listed at the end of the article, using the following format:

### References

- CHAO, Y.-R. (1930). A system of tone letters. *Le Maître Phonétique* 30, 24-27.
- O'CONNOR, J. D. and ARNOLD, G. F. (1973). *The Intonation of Colloquial English*. Second edition. London: Longman.
- SAGEY, E. (1986). *The Representation of Features and Relations in Nonlinear Phonology*. Ph.D. dissertation, MIT.
- SAMPSON, G. (1987). Probabilistic models of analysis. In Garside, R., Leech, G., and Sampson, G. (editors), *The Computational Analysis of English*, 30-41. London: Longman.

**Transcriptions and figures.** Phonetic transcriptions should make use of the symbols and conventions of the Association's alphabet in its latest revision. The set of phonetic symbols used at present in the *Journal* is available as LaserIPA from Linguist's Software, Inc., P.O. Box 580, Edmonds, WA 98020-0580. Phonemic symbols should be enclosed in slashes, and allophonic or general-phonetic symbols in square brackets, e.g. /tel/, [tet], [m]. Figures may be submitted either in computer file form, using one of the standard paint programs on the Macintosh, or as clear originals on paper. In either case they should be drawn to a standard which will allow them to be reproduced clearly in photo-reduction.

**Proofs and offprints.** Proofs will be sent to the author (or their nominee), who will be expected to correct them and return them to the Editor, by airmail where appropriate, within ten days of receipt. The Editor may also confer with authors by e-mail; please supply an e-mail address if available. Upon publication, 25 copies of a contribution will be supplied to the author free of charge; further offprints may be purchased at cost.

**Submission of manuscripts.** See the Editorial note at the beginning of this issue.