

# GLOBAL PERSPECTIVES ON MENTAL HEALTH OF OLDER ADULTS: A PRIMER FOR CLINICIANS



International Psychogeriatric Association  
*Better Mental Health for Older People*

alzheimer's  
association®

# WEBINAR SERIES

presented by IPA

A GLOBAL CONVERSATION  
PLATFORM FOR IPA MEMBERS  
& COLLEAGUES



IPA-120-193



International Psychogeriatric Association  
Better Mental Health for Older People

## Submit an Article for the IPA Bulletin!

The *IPA Bulletin* is the quarterly newsletter of the International Psychogeriatric Association (IPA). In addition to news about IPA and related organizations, the *IPA Bulletin* contains articles on recent advances and initiatives in the field in of psychogeriatrics. The *IPA Bulletin* reaches all the members of IPA, including our affiliates around the world.

*Research and Practice.* The Research and Practice section of the *IPA Bulletin* highlights recent advances in psychogeriatrics and related fields. Articles from all fields related to the mental health of older people are welcome.

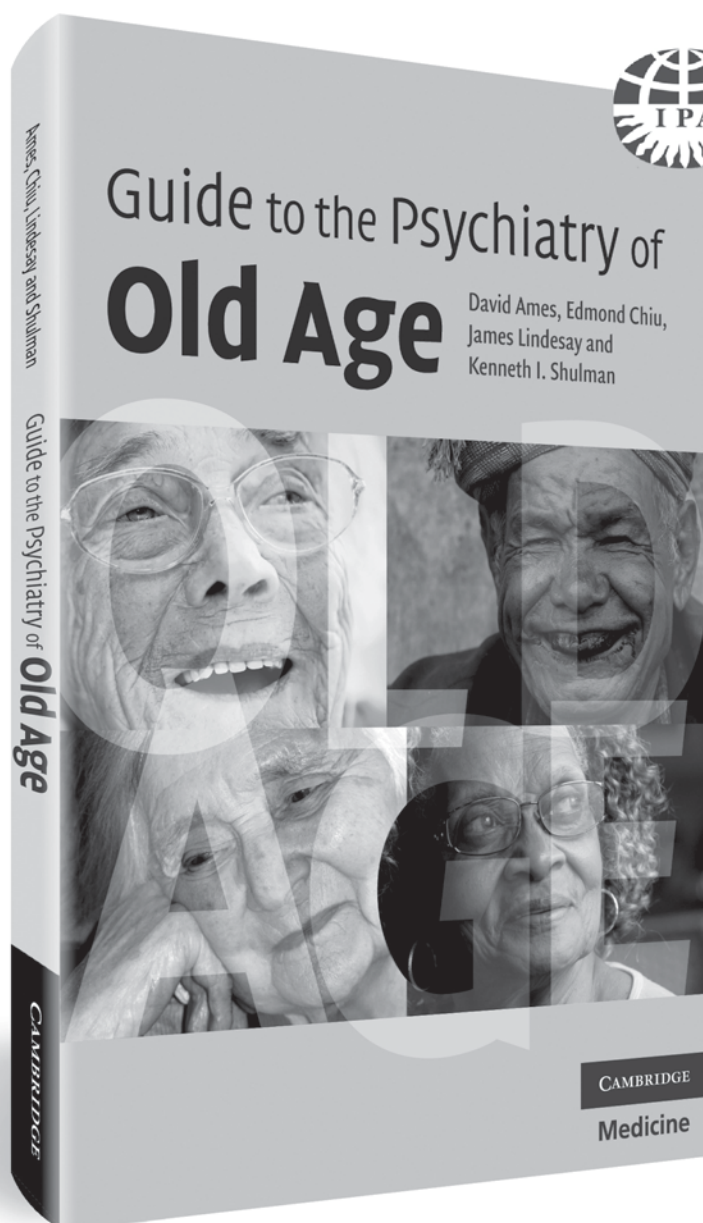
*Around the World.* The Around the World section of the *IPA Bulletin* features articles by clinicians and researchers which report on activities and issues within their country or region. These articles seek to educate others on the state of the field in other countries and provide unique perspectives from around the world.

To learn more about the *IPA Bulletin*,  
visit our website:

[www.ipa-online.org](http://www.ipa-online.org)

CAMBRIDGE

Medicine



Endorsed by the International  
Psychogeriatric Association

David Ames, *University of Melbourne*  
Edmond Chiu, *University of Melbourne*  
James Lindsay, *University of Leicester*  
Kenneth Shulman, *University of Toronto*

**25% discount  
for IPA Members**

Enter promotional code  
IPA10 when you add to basket

order here  
[www.cambridge.org/9780521681919](http://www.cambridge.org/9780521681919)

Paperback 9780521681919

July 2010  
GBP 29.99

## Compact, accessible and affordable

Each chapter is sharp, clear and practical, enhanced by tables and diagrams for quick assimilation and reference on the ward or in the clinic

Coverage also includes legal and ethical issues, and the neglected topic of alcohol and drug abuse in the elderly

[www.cambridge.org/medicine](http://www.cambridge.org/medicine)





# International Psychogeriatric Association

## Better Mental Health for Older People

IPA NEEDS YOU!



### About IPA

The International Psychogeriatric Association (IPA), founded in 1982 and representing members in more than 50 countries, is a unique and diverse professional healthcare community promoting better geriatric mental health – across disciplines, across borders, and across geriatric issues. Psychiatrists, scientists, neurologists, geriatricians, primary care physicians, epidemiologists, nurses, psychologists, occupational therapists, social workers, and many other healthcare professionals come to the IPA community from all around the world to discuss, learn, share and research information about behavioral and biological aspects of geriatric mental health. IPA promotes research and education, facilitates an international exchange of ideas, and fosters cross-cultural understanding of the latest developments in the field.

### IPA Membership

The International Psychogeriatric Association (IPA) encourages professionals from all backgrounds related to geriatric mental health to join our healthcare community. Here are some of the many benefits of joining IPA:

- Unique opportunities to interact with colleagues around the world who share an interest in advancing research, education, and theory about mental health care in older adults.
- Valuable discounts on participation in education and scientific meetings which reflect the full spectrum of disciplines related to psychogeriatrics. Reduced registration rates for the annual IPA International Congress and IPA Regional Meetings are included.
- Relevant publication on updates in the field, including *International Psychogeriatrics*, IPA's peer reviewed journal which publishes twelve issues per year and additional special-focus supplements.
- Access to online educational materials and *The IPA Complete Guides to Behavioral and Psychological Symptoms of Dementia (BPSD)*.
- Subscription to the *IPA Bulletin*, IPA's newsletter which features articles on advances in the field and information on upcoming programs around the world.
- Participation in the IPA Member Forums – smaller member groups which enable members to connect with one another and collaborate on research and clinical care practices. These forums reflect the diversity of interests within geriatric mental health.

### How to Join

To learn more about IPA and become a member, please visit our website: [www.ipa-online.org](http://www.ipa-online.org). IPA offers a one-year membership for \$160 USD. One-year student or retired memberships are available for \$99 USD. **A limited number of Lifetime Memberships are also available for \$1000 USD.** The IPA Secretariat is available to answer any questions you may have about IPA or membership. Please contact us at +1 414 918 9889 or by email at [info@ipa-online.org](mailto:info@ipa-online.org).

### Have Questions? Contact us!

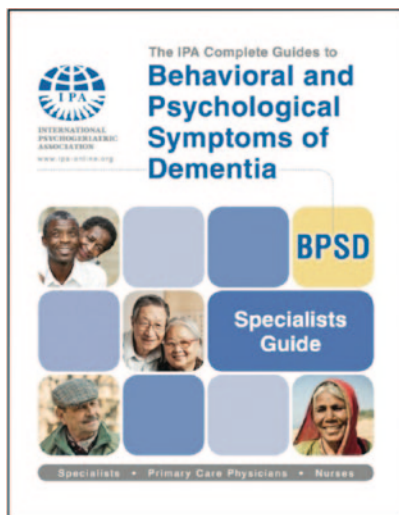
International Psychogeriatric Association  
555 East Wells Street, Suite 1100  
Milwaukee, WI 53202  
United States  
Phone: +1 414 918 9889  
Fax: +1 414 276 3349  
Twitter: @IPA\_Online  
[www.ipa-online.org](http://www.ipa-online.org)  
[info@ipa-online.org](mailto:info@ipa-online.org)



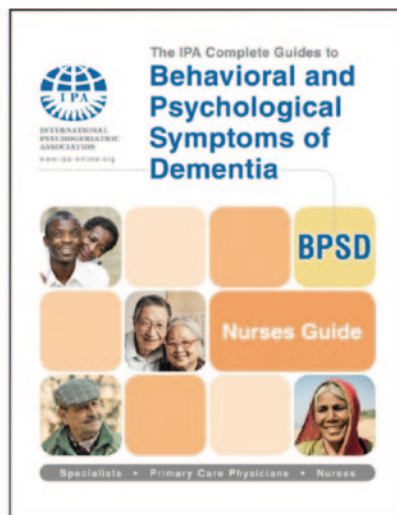


International Psychogeriatric Association  
Better Mental Health for Older People

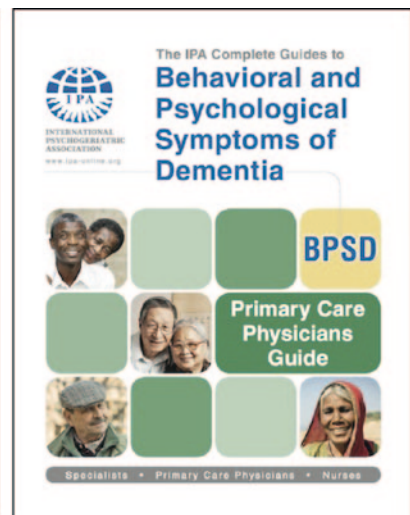
*The IPA Complete Guides to  
Behavioral and Psychological Symptoms of Dementia (BPSD)*



**Specialists Guide**  
*Recently Revised!*



**Nurses Guide**



**Primary Care  
Physicians Guide**

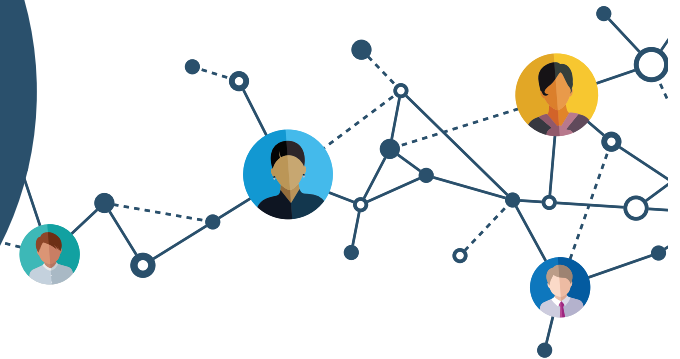
The Only Resources You Need for *All* of the  
Members of Your Team!

The IPA Complete Guides to Behavioral and Psychological  
Symptoms of Dementia (BPSD) are available to all members of  
the International Psychogeriatric Association (IPA).

To learn more about IPA and access the Guides, please visit:  
[www.ipa-online.org](http://www.ipa-online.org)

# 2021 IPA Virtual Congress

Live + On Demand  
Content



## Inclusion, Creativity and Rights - The Future of Older Peoples Mental Health Care



International Psychogeriatric Association  
*Better Mental Health for Older People*

IPA-021-16



# Psychology

Books and Journals from  
Cambridge University Press

Cambridge University Press is a leading publisher  
in the psychological and brain sciences.

From undergraduate course resources, our  
prestigious Cambridge Handbooks in Psychology  
series, our leading journals including *Behavioral  
and Brain Sciences* and *Development and  
Psychopathology*, and our extensive collection of  
scholarly monographs.

Cambridge supports learning and research across  
all of psychology and related fields.

For further details visit:

[cambridge.org/core-psychology](https://www.cambridge.org/core-psychology)

Cambridge  
Core



CAMBRIDGE  
UNIVERSITY PRESS



## Scope and contributions

*International Psychogeriatrics* is written by and for those doing clinical, teaching, and research work with older people. It is the official journal of the International Psychogeriatric Association (IPA) and is published by Cambridge University Press, Cambridge, UK. Although it is primarily concerned with psychogeriatrics, the journal welcomes contributions from all concerned with the field of mental health and aging. Original research papers are particularly sought.

Contributions include original research articles, reviews of the literature, book reviews, letters to the editor, and editorials. Apart from editorials and book reviews, which are commissioned, contributions to *International Psychogeriatrics* are spontaneously written and submitted by authors. Papers are usually reviewed by two expert reviewers selected by the Editor-in-Chief. At present, about one-third of the papers submitted are accepted for publication. The journal's Science Citation Index impact factor is 2.423 (2016). Submission of a paper implies that it is neither under consideration for publication elsewhere, nor previously published in English. Manuscripts must be formatted double-spaced with ample margins on all sides and the pages should be numbered. *International Psychogeriatrics* uses the spelling of American English. Manuscripts written by those whose primary language is not English should be edited carefully for language prior to submission. The journal has a Language Assistance Panel consisting of both native English speakers willing to check manuscripts for style prior to submission, and bilingual experts willing to assist with the translation of manuscripts into English. Further details including contact information for individual panel members can be found at both the journal and IPA websites ([journals.cambridge.org/ipg](http://journals.cambridge.org/ipg) and [www.ipa-online.org](http://www.ipa-online.org)).

An up to date version of the journal's instructions for contributors can be found at the *International Psychogeriatrics* website [journals.cambridge.org/ipg](http://journals.cambridge.org/ipg). Please read these instructions carefully before submitting articles. **Articles that are not prepared in accordance with these guidelines will be returned to authors.**

**Manuscripts should be submitted online via our manuscript submission and tracking site, <<http://mc.manuscriptcentral.com/ipg>>. Full instructions for electronic submission are available directly from this site.**

## Important Addresses

Office of the Editor-in-Chief  
Dilip V. Jeste, Editor-in-Chief  
*International Psychogeriatrics*  
Sam and Rose Stein Institute for Research on Aging  
University of California, San Diego  
9500 Gilman Drive #0664  
San Diego, CA 92093, USA  
Email: [ipaj-ed@cambridge.org](mailto:ipaj-ed@cambridge.org)

## For business matters:

Kate Filipiak  
Managing Editor, *International Psychogeriatrics*  
International Psychogeriatric Association  
555 E. Wells Street,  
Suite 1100  
Milwaukee, WI 53202  
United States

Email: [ipa@ipa-online.org](mailto:ipa@ipa-online.org)  
Tel: +1 414 918 9889  
Fax: +1 414 276 3349  
Web: [www.ipa-online.org](http://www.ipa-online.org)

This journal issue has been printed on FSC-certified paper and cover board. FSC is an independent, non-governmental, not-for-profit organization established to promote the responsible management of the world's forests. Please see [www.fsc.org](http://www.fsc.org) for information.

Enquiries about advertising should be sent to the Journal's Promotion Department of the Cambridge or American Branch of Cambridge University Press.

© 2021 International Psychogeriatric Association

PRINTED IN THE UK BY BELL AND BAIN LTD



# International Psychogeriatrics

Issue Theme: Cognitive Aging: Subjective and Objective

## CONTENTS

- Commentaries**
- 645 Putting memory complaints in context matters**  
Rebecca Amariglio
- 647 Cognitive biomarkers of post-traumatic stress disorder**  
Barton W. Palmer
- 651 Does “one size fit all” in subjective cognitive decline?**  
Lorenzo Pini and Alexandra M. Wennberg
- 655 Future directions for sleep and cognition research in at-risk older adults**  
Yeonsu Song, Laura M. Campbell, and Raeanne C. Moore
- 659 Measuring work-related mental work demands: work as a protective factor for cognitive loss**  
Erick Messias
- 661 Appreciating cognitive and emotional growth in older adults**  
Ryan Van Patten and John A. Bellone
- Theme Articles**
- 665 The roles of study setting, response bias, and personality in subjective memory complaints of cognitively normal older adults**  
Sarah M. Goldberg, Oscar L. Lopez, Ann D. Cohen, William E. Klunk, Howard A. Aizenstein, Akiko Mizuno, and Beth E. Snitz
- 677 The role of intraindividual cognitive variability in posttraumatic stress syndromes and cognitive aging: a literature search and proposed research agenda**  
Lauren A. Rutter, Ipsit V. Vahia, Eliza Passell, Brent P. Forester, and Laura Germino
- 689 Unmet needs for assistance related to subjective cognitive decline among community-dwelling middle-aged and older adults in the US: prevalence and impact on health-related quality of life**  
Erin D. Bouldin, Christopher A. Taylor, Kenneth A. Knapp, Christina E. Miyawaki, Nicholas R. Mercado, Karen G. Wooten, and Lisa C. McGuire
- 703 Sleep quality, neurocognitive performance, and memory self-appraisal in middle-aged and older adults with memory complaints**  
Prabha Siddarth, Kitikan Thana-udom, Rashi Ojha, David Merrill, Joseph M. Dzierzewski, Karen Miller, Gary W. Small, and Linda Ercoli
- 715 Development of a protective mental work demands questionnaire**  
Felix S. Hussenoeder, Ines Conrad, Steffi G. Riedel-Heller, and Francisca S. Rodriguez
- 727 Cross-sectional association between objective cognitive performance and perceived age-related gains and losses in cognition**  
Serena Sabatini, Obioha C. Ukoumunne, Clive Ballard, Rachel Collins, Kaarin J. Anstey, Manfred Diehl, Allyson Brothers, Hans-Werner Wahl, Anne Corbett, Adam Hampshire, Helen Brooker, and Linda Clare

Cambridge Core

For further information about this journal  
please go to the journal website at:  
[cambridge.org/ipg](https://www.cambridge.org/ipg)



www.fsc.org

MIX

Paper from  
responsible sources  
FSC® C007785

CAMBRIDGE  
UNIVERSITY PRESS