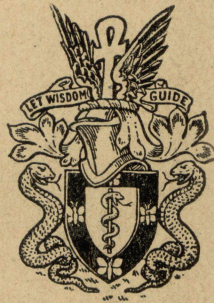


VOL. LXXXVII, NO. 367

APRIL, 1941

# THE JOURNAL OF MENTAL SCIENCE



BY AUTHORITY OF  
THE ROYAL MEDICO-PSYCHOLOGICAL ASSOCIATION

MANAGING EDITOR  
**G. W. T. H. FLEMING**

IN COLLABORATION WITH  
**Douglas McRae**      **Alexander Walk**

AND WITH THE ASSISTANCE OF

<b>E. D. Adrian</b>	<b>P. K. McCowan</b>
<b>F. C. Bartlett</b>	<b>Alfred Meyer</b>
<b>S. M. Coleman</b>	<b>Lionel S. Penrose</b>
<b>C. J. C. Earl</b>	<b>A. A. W. Petrie</b>
<b>F. L. Golla</b>	<b>W. M. Scott</b>
<b>E. G. Holmes</b>	<b>E. T. O. Slater</b>
<b>C. J. McCarthy</b>	<b>W. Stephenson</b>

LONDON  
**J. & A. CHURCHILL, LTD.**

Published Four times Yearly, price Nine Shillings net.

# THE JOURNAL OF MENTAL SCIENCE

Communications on general editorial matters, including MSS. for publication, books for review and other printed matter, and communications regarding the *Epitome* section, including journals to be abstracted, should be sent to the **Managing Editor, Barnwood House, Gloucester.**

Communications and inquiries regarding sales should be addressed to the Publishers, **Messrs. J. & A. CHURCHILL, Ltd., 104, Gloucester Place, Portman Square, London, W.1;** and those regarding Advertisements to **Messrs. S. FRETWELL & Co., 57 and 59, Ludgate Hill, London, E.C.4.** 'Phone: City 4579.

---

## THE ROYAL MEDICO-PSYCHOLOGICAL ASSOCIATION

### PUBLICATIONS

From MESSRS. ADLARD & SON, LTD.,

Bartholomew Press, Dorking.

"**The Clinical Study of Mental Disorders.**" By J. R. LORD, *C.B.E.*, M.D., F.R.C.P.E.  
Price 6/-. Postage 4d.

**The Charter and Bye-Laws of the Association.** Price 1/-. Postage 1d.

**Engraved Book-Plate of the Association.** Price 1/-. Postage 1d.

**Enquiry (History) Form**, supplied in three sizes: (1) 16 pp., 9 $\frac{1}{2}$ " x 6 $\frac{1}{2}$ ", @ 31/6 per 100;  
(2) 8 pp., 12 $\frac{3}{4}$ " x 8", @ 27/6 per 100; (3) 4 pp., 16" x 10", @ 16/6 per 100. Carriage paid.

**Card of Practical Instruction:** 3/6 per 50, 7/- per 100, including postage.

From MESSRS. J. & A. CHURCHILL, LTD.:

**Catalogue of the Library of the Royal Medico-Psychological Association.** 1928.  
Price 2/-. Post free.

From BAILLIÈRE, TINDALL & COX:

"**Handbook for Mental Nurses.**" 7th edn. 1923. Price 6/- net.

"**Manual for Mental Deficiency Nurses.**" 1931. Price 6/- net.

"**Occupational Therapy Brochure.**" 1938. Price 1/-.

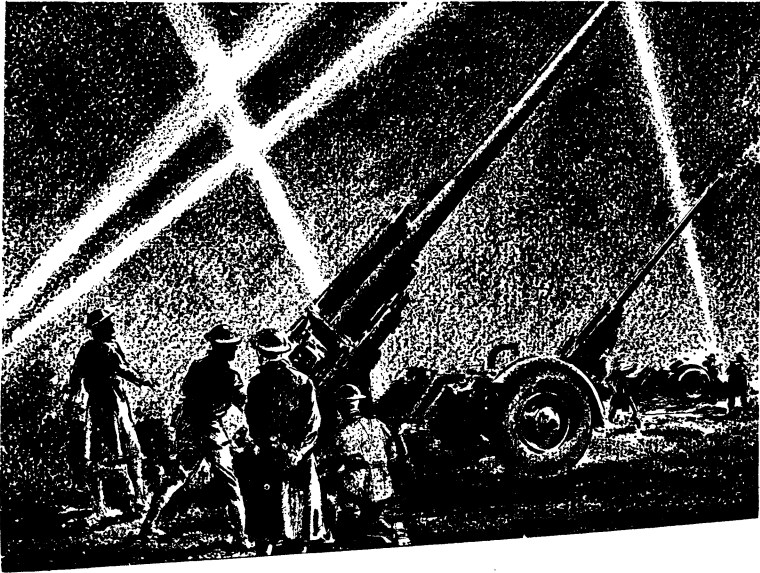
From the SECRETARY, 11 Chandos Street, London, W. 1:

"**Regulations and Rules for the Examinations for the Certificates of Proficiency in Mental Nursing and in Nursing Mental Defectives.**" Price 1/-.  
Postage 1d.

"**Syllabuses for the Examinations for the Certificates of Proficiency in Nursing Mental Defectives.**" Price 2d. each. Postage  $\frac{1}{4}$ d.

**Examination Papers, 1928-38** (reprinted). Price 1/6. Postage 1d.

*Made and printed in Great Britain.*



# AT THE *Critical* MOMENT

CORAMINE, since its introduction into therapeutics, has been accepted as a most valuable respiratory and circulatory stimulant.

CORAMINE is still recognised as *the* Stimulant of the Vital Centres.

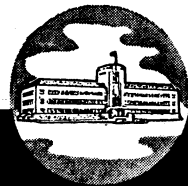
CORAMINE is made in Great Britain under Letters Patent and ample supplies are available.

LITERATURE  
AND  
SAMPLES  
ON  
REQUEST

*Coramine*  
Brand of NIKETHAMIDE B.P.

REGD.  
TRADE  
MARK

*Ciba* Limited



THE LABORATORIES, HORSHAM, SUSSEX  
TELEPHONE: HORSHAM 1234. TELEGRAMS: CIBALABS, HORSHAM

# ADLARD & SON

LIMITED

**BARTHOLOMEW PRESS  
DORKING — SURREY**



**PRINTERS  
OF THIS ::  
:: JOURNAL**

COMPETITIVE ESTIMATES SUBMITTED PROMPTLY

**FOUNDED IN 1766** during the American War of Independence, the Firm has continued uninterrupted **THROUGH MANY WARS** and is able to undertake **ALL CLASSES OF PRINTING.**

**The Staff is Specially Trained** in the production of all printed matter connected with **Private Hospitals and Homes, Medical, Scientific and other Institutions.**

Regd. Offices: 194/200 BISHOPSGATE, E.C. 2.

Tel.: DORKING 2886.

Communications regarding Advertisements in  
this publication should be addressed to—

**S. FRETWELL & CO.,**

**57 & 59, Ludgate Hill,**

**London, E.C. 4**

from whom full particulars may be obtained.

Telephone - - CITY 4579.

## MENTAL HOSPITALS, INSTITUTIONS, HOMES, ETC.

# ST. ANDREW'S HOSPITAL

## FOR NERVOUS AND MENTAL DISORDERS

# NORTHAMPTON

FOR THE UPPER AND MIDDLE CLASSES ONLY

*President:* THE MOST HON. THE MARQUESS OF EXETER, K.G., C.M.G., A.D.C.

*Medical Superintendent:* THOMAS TENNENT, M.D., M.R.C.P., D.P.H., D.P.M.

This Registered Hospital is situated in 130 acres of park and pleasure grounds. Voluntary patients, who are suffering from incipient mental disorders or who wish to prevent recurrent attacks of mental trouble, temporary patients, and certified patients of both sexes are received for treatment. Careful clinical, bio-chemical, bacteriological, and pathological examinations. Private rooms with special nurses, male or female, in the Hospital or in one of the numerous villas in the grounds of the various branches can be provided.

### WANTAGE HOUSE

This is a Reception Hospital in detached grounds with a separate entrance, to which patients can be admitted. It is equipped with all the apparatus for the complete investigation and treatment of Mental and Nervous Disorders by the most modern methods; insulin treatment is available for suitable cases. It contains special departments for hydrotherapy by various methods, including Turkish and Russian baths, the prolonged immersion bath, Vichy Douche, Scotch Douche, Electrical baths, Plombières treatment, etc. There is an Operating Theatre, a Dental Surgery, an X-Ray Room, an Ultra-Violet Apparatus, and a Department for Diathermy and High-Frequency treatment. It also contains Laboratories for biochemical, bacteriological, and pathological research. Psychotherapeutic treatment is employed when indicated.

### MOULTON PARK

Two miles from the Main Hospital there are several branch establishments and villas situated in a park and farm of 650 acres. Milk, meat, fruit and vegetables are supplied to the Hospital from the farm, gardens, and orchards of Moulton Park. Occupational therapy is a feature of this branch, and patients are given every facility for occupying themselves in farming, gardening and fruit-growing.

### BRYN-Y-NEUADD HALL

The seaside house of St. Andrew's Hospital is beautifully situated in a Park of 330 acres at Llanfairfechan, amidst the finest scenery in North Wales. On the North-West side of the Estate a mile of sea-coast forms the boundary. Patients may visit this branch for a short seaside change or for longer periods. The Hospital has its own private bathing house on the seashore. There is trout-fishing in the park.

At all the branches of the Hospital there are cricket grounds, football and hockey grounds, lawn tennis courts (grass and hard courts), croquet grounds, golf courses, and bowling greens. Ladies and gentlemen have their own gardens, and facilities are provided for handicrafts, such as carpentry, etc.

For terms and further particulars apply to the Medical Superintendent (Telephone No. 2356 and 2357 Northampton), who can be seen in London by appointment.

# HEIGHAM HALL, NORWICH

## PRIVATE MENTAL HOME

for Nervous and Mental illness. All forms of treatment available. Fees from 4 gns. per week upwards, according to requirements. Vacancies occasionally exist at reduced fees on the recommendation of the patient's own physician.

Apply to **Dr. J. A. SMALL.**

TELEPHONE: NORWICH 80.

## MENTAL HOSPITALS, INSTITUTIONS, HOMES, ETC.

**CHEADLE ROYAL** CHEADLE,  
CHESHIRE

A Registered Hospital for MENTAL DISEASES, and its Seaside Branch, GLAN-Y-DON, Colwyn Bay, N. Wales.

THE object of this Hospital is to provide the most efficient means for the treatment and care of those of the Upper and Middle Classes suffering from MENTAL and NERVOUS DISEASES. The Hospital is governed by a Committee appointed by the Trustees of the Manchester Royal Infirmary.

VOLUNTARY, TEMPORARY and CERTIFIED PATIENTS RECEIVED.

For Terms and further information apply to the MEDICAL SUPERINTENDENT.

Telephone: GATLEY 2231.

**CHISWICK HOUSE** Phone: PINNER 234  
PINNER,  
MIDDLESEX

A Private Hospital for the Treatment and Care of Mental and Nervous Illnesses in Both Sexes.

A modern country house, 12 miles from Marble Arch, in attractive and secluded surroundings.

Fees from 10 guineas per week inclusive.

Cases under certificate, Voluntary and "Temporary" Patients received for treatment.

DOUGLAS MACAULAY, M.D., D.P.M.

**FENSTANTON,** CHRISTCHURCH ROAD,  
STREATHAM HILL, S.W. 2.

Emergency Address: "FIVE DIAMONDS," CHALFONT ST. GILES, BUCKS.

A Private Home for the Care and Treatment of a limited number of Ladies with Mental and Nervous Disorders. Certified, Temporary and Voluntary Patients received.

Large Mansion with 12 acres of ground. Home-like surroundings.

Apply Dr. MADELINE LOCKWOOD, Resident Physician. Telephone: Little Chalfont 2046.

**HAYDOCK LODGE,** NEWTON-LE-WILLOWS,  
LANCASHIRE

For the reception and treatment of PRIVATE PATIENTS of both sexes of the UPPER AND MIDDLE CLASSES suffering from Mental and Nervous Disorders, Alcoholism and Drug Addiction, either voluntary, temporary or under certificate. Patients are classified in separate buildings according to their mental condition.

Situated in park and grounds of 400 acres. Self-supported by its own farm and gardens in which patients are encouraged to occupy themselves. Every facility for indoor and outdoor recreation. For terms, prospectus, etc., apply MEDICAL SUPERINTENDENT.

Telegraphic Address: "Street," Ashton-in-Makerfield.

'Phone: 7311 Ashton-in-Makerfield.

**THE COPPICE,** Nottingham, REGISTERED HOSPITAL  
FOR MENTAL DISEASES.

President—THE RT. HON. THE LORD BELPER.

This Institution, for the reception of Private Patients of both sexes of the Upper and Middle Classes only, at moderate rates of payment, is beautifully situated in its own grounds about two miles from Nottingham, and from its singularly healthy and pleasant position, and the comfort of its internal arrangements, affords every facility for the relief and cure of those mentally afflicted. Occupational Therapy. Divine Service is held in the Institution every Sunday by the Chaplain, who also visits the Patients. Motor exercise is provided. There is a branch Seaside Villa at Lowestoft. VOLUNTARY AND "TEMPORARY" PATIENTS ARE RECEIVED.

For Terms, etc., apply to Dr. HUNTER, Medical Superintendent.

# HOLME LACY HOSPITAL

**HOLME LACY**      For Ladies suffering from  
**HEREFORD**    ::    Nervous & Mental Disorders

This Hospital is situated in 30 acres of garden with magnificent views of the Wye Valley, and homelike surroundings.

Every facility for specialized investigation and treatment is provided, including Hydro-therapy, Helio-therapy, Diathermy and Occupational Therapy.

Provision is made for Tennis, Putting, Croquet and Squash. Voluntary, Temporary and Certified patients received.

Terms from Three Guineas weekly.

For further particulars apply to the Physician Superintendent.

Telephone: Burghill 4.

# COURT HALL, KENTON, near EXETER

FOR THE TREATMENT OF EIGHT LADIES, VOLUN-  
TARY, TEMPORARY AND CERTIFIED PATIENTS

# CLIFFDEN, TEIGNMOUTH

FOR EARLY AND CONVALESCENT CASES  
Recreational Therapies are held daily by Skilled Leaders

The house stands high, with spacious balconies and extensive views of the South Devon Coast. Beautiful garden. Own Dairy in 25 acres. Private road to beach.

There is also a charming house

# **EBWORTHY, MANATON, DARTMOOR**

situated in 20 acres, 1,100 ft. up for bracing moorland air.

*Resident Physicians:*

**BERTHA M. MULES, M.D., B.S.**      **ANNE S. MULES, M.R.C.S., L.R.C.P.**

Telephones: STARCROSS 59 and TEIGNMOUTH 289.

MENTAL HOSPITALS, INSTITUTIONS, HOMES, ETC.

# Holloway Sanatorium

## VIRGINIA WATER

**A REGISTERED HOSPITAL for the Treatment of  
MENTAL DISORDERS of the EDUCATED CLASSES**

Founded by THOMAS HOLLOWAY in 1885



This Institution is situated in a beautiful and healthy locality within easy reach of London. It is fitted with every comfort. Patients can have Private Bedrooms and Special Nurses as well as the use of General Sitting Rooms, at moderate rates of payment. Voluntary Patients can be admitted. There is a Branch Establishment at CANFORD CLIFFS, BOURNEMOUTH, where Patients can be sent for a change and be provided with all the comforts of a well-appointed home.

For Terms apply to The **RESIDENT MEDICAL SUPERINTENDENT,**  
St. Ann's Heath, Virginia Water, SURREY

# THE FLOWER HOUSE

PRIVATE MENTAL HOME BECKENHAM HILL ROAD, S.E. 6

War Address **WONHAM HOUSE** BAMPTON N. DEVON

Telephones: BAMPTON 5 and 112.

THIS PRIVATE HOME is for GENTLEMEN suffering from Mental and Nervous disorders both under Certificates and as Voluntary Patients.

During the war FLOWER HOUSE is occupying a beautiful mansion in the Exe River Valley. Complete range of modern treatments, both organic and psychotherapeutic, are carried out by a medical staff of wide and varied experience.

Apply for full particulars and brochure to Dr. FRANK FINIGAN, Medical Superintendent, or the Resident Director, Mrs. E. à Beckett, Wonham House.



Trade  
Mark

# PHRENAZOL <sup>Brand</sup>

*Pentamethylenetetrazol*

## For the Shock (Convulsive) Treatment of Schizophrenia

The value of Phrenazol shock (convulsive) treatment of schizophrenia has been fully confirmed by clinical results. The method is safe and in practice difficulties and complications are rare.

Phrenazol is also available for use as a cardiac and respiratory stimulant and for the treatment of barbiturate poisoning and anæsthetic narcosis.

Phrenazol is supplied in 1 c.c., 3 c.c. and 5 c.c. ampoules, boxes of 3 and 6 ampoules; 25 c.c. rubber-capped vials; and in powder for preparing sterile solutions. Phrenazol Oral—bottles of  $\frac{1}{2}$  fl. oz. and tablets 0.1 gm., tubes of 10 and bottles of 100.



Obtainable through all branches of

The  
**Boots**  
Chemists

*Literature sent upon request.*

**BOOTS PURE DRUG CO. LTD NOTTINGHAM**

FOR SEVERE, INVETERATE, UNRESPONSIVE EPILEPSY

# SOLANTOIN

Brand

the Glaxo preparation of the anti-convulsant  
SODIUM DIPHENYLHYDANTOINATE



Non-depressant. To be given alone or with a nightly dose of the usual anti-convulsant. Dose is one to three tablets daily. British trials fully confirm reports of American successes. 'Solantoin' is available as 0.1 gram tablets: bottles of 25 and 100.

GLAXO LABORATORIES, LIMITED, GREENFORD, MIDDLESEX.

BYRon 3434



**BRYN  
SCHOOL**

**DOLGELLY**

A SCHOOL AND HOME  
approved by the Board of Control for

**MENTALLY DEFECTIVE**

**BOYS**

BEAUTIFULLY SITUATED IN THE  
HEART OF NORTH WALES

**LAVERSTOCK HOUSE SALISBURY  
WILTS**

PRIVATE MENTAL HOME FOR LADIES AND GENTLEMEN

Completely up to date. Lovely house and grounds (18 acres). Certified and uncertified cases taken.  
Facilities for going to the seaside.

ESTABLISHED OVER 200 YEARS

Apply to the Med. Supt. for illustrated brochure.

Tel.: SALISBURY 2612.

**CITY OF LONDON MENTAL HOSPITAL**

Near DARTFORD, KENT.

Ladies and Gentlemen received for treatment under certificates, or without certification as either VOLUNTARY or TEMPORARY PATIENTS,  
at a weekly fee of £2 : 9 : 0 and upwards.

APPLY MEDICAL SUPERINTENDENT.

TELEPHONE: DARTFORD 2901  
2902

*To face first matter.*