

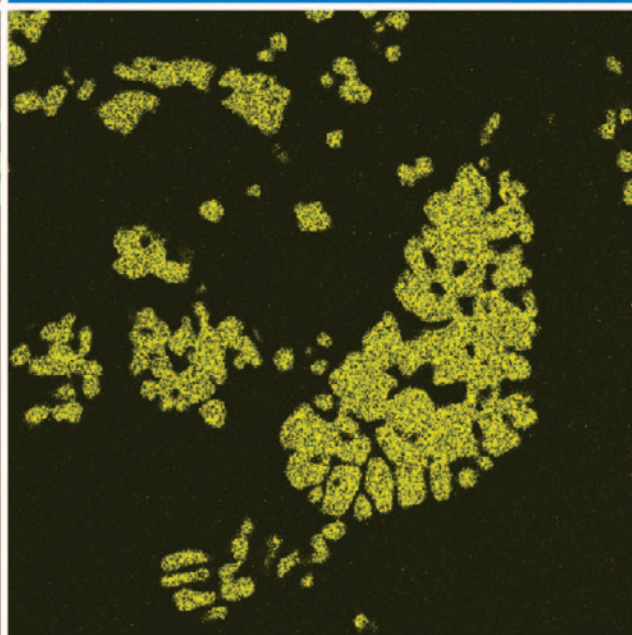
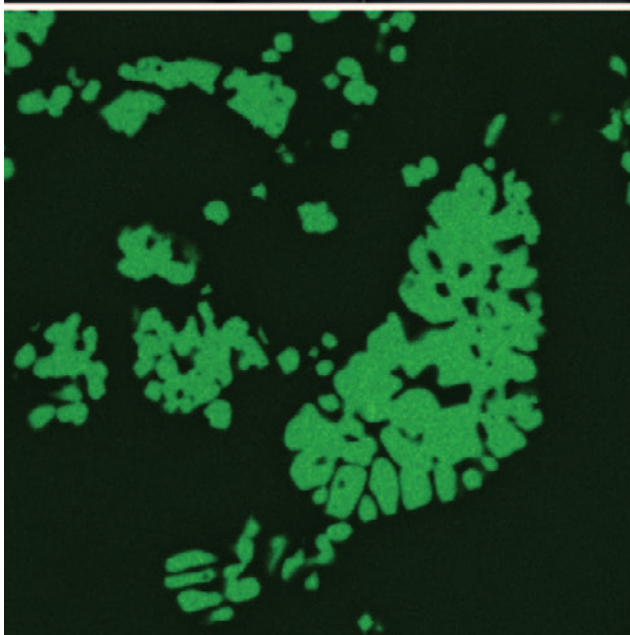
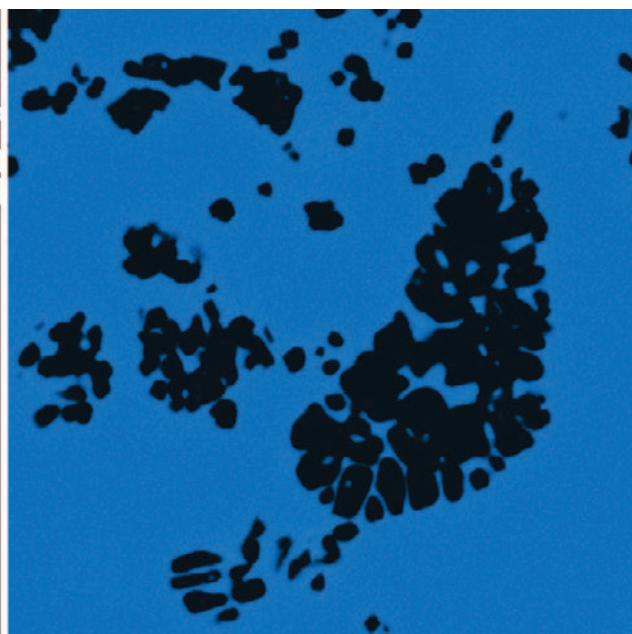
# Microscopy TODAY

Volume 20

Number 1

2012 January

https://doi.org/10.1017/S1551929511001532 Published online by Cambridge University Press



# *Don't Compromise*

The HITACHI HT7700 120kV TEM  
High-contrast and high-resolution TEM



- ◇ Completely digital, ergonomic design
- ◇ High-stability 5-axis side-entry Hiper stage
- ◇ Clean turbo-pumped vacuum system
- ◇ Fast pumpdown and sample exchange
- ◇ Low magnification/wide field of view
- ◇ Automated digital montage and auto-tuning functions
- ◇ Tomography, EDS, and STEM capabilities

**Contact us to learn  
about our new 3-year  
warranty promotion for  
select SEM and TEM  
models!\***

## When it counts, think Hitachi

\*Offer valid in the United States only. Requires acceptance of additional Terms & Conditions. Hitachi High Technologies America reserves the right to terminate or modify this warranty promotion at any time. Contact us for details.

Hitachi High Technologies America, Inc.  
toll free: 800-548-9001 (US & Canada)  
email: sales-LS@hitachi-hta.com

[www.hitachi-hta.com/ht7700](http://www.hitachi-hta.com/ht7700)  
[www.youtube.com/user/HitachiHTA](http://www.youtube.com/user/HitachiHTA)

**HITACHI**  
Inspire the Next





# M&M 2012

## MICROSCOPY & MICROANALYSIS

July 29 – August 2 • Phoenix, AZ

Visit [www.microscopy.org/MandM/2012/](http://www.microscopy.org/MandM/2012/) for:

### **Abstract Submissions**

(Deadline is February 15, 2012)

### **Hotel & Meeting Information**

### **Program Details**

Four full days of paper and poster presentations

### **Registration**

(Online registration begins February 1, 2012)

**Register Early and Save!**



International  
Metallographic  
Society, Inc.  
An Affiliate Society of ASM International

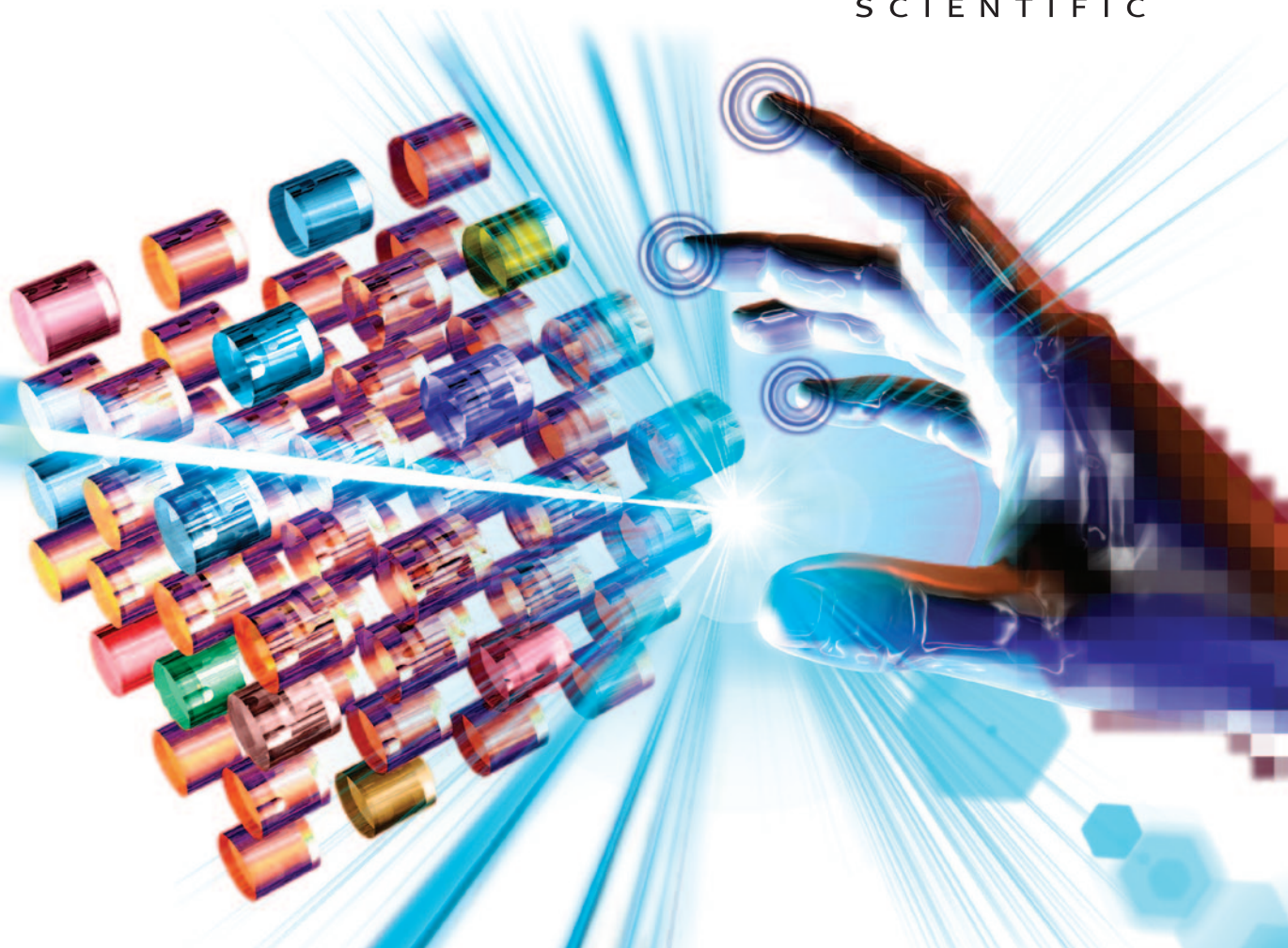
# True system integration.

Electron microscopy laboratories seek maximum productivity and accuracy from microanalysis. Systems need to be intuitive, easy to use and eliminate operator bias. Our long history of innovation has led to the first truly integrated microanalysis system, providing the optimal combination of **EBSD, WDS and EDS detectors**, software and electronics. Collect large amounts of data in the shortest amount of time. Identify phases confidently with a minimum amount of spectra. Move seamlessly through your analysis with one common interface.

## Fast. Easy. Precise. Microanalysis.

• driving bold progress in spectroscopy • [www.thermoscientific.com/microanalysis](http://www.thermoscientific.com/microanalysis)

**Thermo**  
SCIENTIFIC



# Contents

## Feature Article

**12 A New Basaltic Glass Microanalytical Reference Material for Multiple Techniques**

Steve Wilson, Alan Koenig, and Heather Lowers

## Instrumentation and Methods

**18 Transmission Electron Microscopy Imaging of Structural Transformation Dynamics in a Single Nanocrystal**

Haimei Zheng

**24 Standards-Based Quantification in DTSA-II—Part II**

Nicholas W.M. Ritchie

## Biological Applications

**30 Workflow-Centric Cryo-SEM for Biological Research**

Ben Lich

**36 The Natural Patterns of Self-Cleaning Surfaces: RIMAPS Analysis of Superhydrophobic Leaves**

Eduardo A. Favret and Ana M. Molina

## Meetings

**42 Meeting Preview: Microscopy & Microanalysis 2012 in Phoenix, Arizona**

Luke N. Brewer

**46 Meeting Report: Microscopy & Microanalysis 2011**

David Giovannucci

## Departments

**7 Editorial**

**8 Carmichael's Concise Review**

**48 Microscopy Pioneers**

**50 Industry News**

**52 Product News**

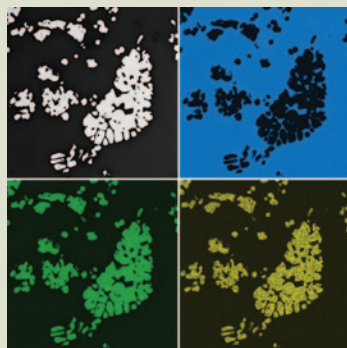
**54 NetNotes**

**59 Calendar of Meetings**

**64 Dear Abbe**

**66 Index to Advertisers**

### About the Cover



Precipitation of an iron-nickel spinel in a glass matrix. Backscattered electron image (upper left) and X-ray maps for Si (blue), Fe (green), and Ni (yellow). Full width = 323  $\mu\text{m}$ .

See article by Wilson et al.





Cooling Stages

Recirculating Heaters and Chillers

Sputter Coaters

SEM/TEM Carbon Coaters

Vacuum Evaporators

Glow Discharge Systems

RF Plasma Etchers/  
Plasma Reactors

Critical Point Dryers

Freeze Dryers

Cryo-SEM Preparation Systems

Vacuum Pumps & Accessories

Evaporation Supplies

**and more...**

## well equipped...

Electron Microscopy Sciences is pleased to announce our new full line catalog, your comprehensive source for high-end Vacuum Equipment. EMS is committed to providing the highest quality products along with competitive pricing, prompt delivery and outstanding customer service.



## and more...

Not just Vacuum Equipment, EMS also offers:

Laboratory Microwave Ovens • Automated Tissue Processors • Oscillating Tissue Slicers • Vibrating Microtomes • Rapid Immersion Freezers • Tissue Choppers • Desiccators and Desiccants • Centrifuges, Tubes, and Racks • Stirrers, Stirring Hotplates, and Digital Hotplates • Stirring Bars, Stirring Rods, and Hand Mixers • Vortex Mixers, Microplate Mixers, and Magnetic Stirrers • Tissue Rotators, Mixer Vortexes, and Rotator/Rockers • Dri Baths • Oven/Incubators • Cooling Chambers • Ultraviolet Lamps • Lab Jacks

For catalog requests, please visit our website at [www.emsdiasum.com](http://www.emsdiasum.com)



**Electron  
Microscopy  
Sciences**

Electron Microscopy Sciences  
P.O. Box 550 • 1560 Industry Rd. • Hatfield, Pa 19440  
Tel: (215) 412-8400 • Fax: (215) 412-8450  
email: [sgkcck@aol.com](mailto:sgkcck@aol.com) • [www.emsdiasum.com](http://www.emsdiasum.com)